



Global @dvisor

The Economic Pulse of the World

Citizens in 24 Countries Assess the Current State of their Country's Economy for a Total Global Perspective





These are the findings of the *Global @dvisor* Wave 67 (G@67), an Ipsos survey conducted between February 23rd and March 6th , 2015.

- The survey instrument is conducted monthly in 24 countries around the world via the Ipsos Online Panel system. The countries reporting herein are Argentina, Australia, Belgium, Brazil, Canada, China, France, Great Britain, Germany, Hungary, India, Israel, Italy, Japan, Mexico, Poland, Russia, Saudi Arabia, South Africa, South Korea, Spain, Sweden, Turkey and the United States of America.
- For the results of the survey presented herein, an international sample of 17,536 adults aged 18-64 in the US, Israel and Canada, and age 16-64 in all other countries, were interviewed. Approximately 1000+ individuals participated on a country by country basis via the Ipsos Online Panel with the exception of Argentina, Belgium, Hungary, Israel, Mexico, Poland, Russia, Saudi Arabia, South Africa, South Korea, Sweden and Turkey, where each have a sample approximately 500+. The precision of Ipsos online polls are calculated using a credibility interval with a poll of 1,000 accurate to +/- 3.5 percentage points and of 500 accurate to +/- 5.0 percentage points. For more information on the Ipsos use of credibility intervals, please visit the Ipsos website.
- In countries where internet penetration is approximately 60% or higher the data output is comparable the general population. Of the 25 countries surveyed online, 15 yield results that are balanced to reflect the general population: Argentina, Australia, Belgium, Canada, France, Germany, Hungary, Italy, Japan, Poland, South Korea, Spain, Sweden, United Kingdom and United States. The eight remaining countries surveyed –Brazil (53% Internet penetration among the citizenry), China (46%), India (19%), Mexico (41%), Russia (59%), Saudi Arabia (59%), South Africa (47%) and Turkey (47%)—have lower levels of connectivity therefore are not reflective of the general population; however, the online sample in these countries are particularly valuable in their own right as they are more urban/educated/income than their fellow citizens and are often referred to as “Upper Deck Consumer Citizens”.

Analytic Components...

- There are three analytic components that make up the findings of this monthly Economic Pulse report. Each question is tracked and analyzed from questions dealing with:

① The currently perceived macroeconomic state of the respondent's country:

- Thinking about our economic situation, how would you describe the current economic situation in [insert country]? Is it very good, somewhat good, somewhat bad or very bad?

② The currently perceived state of the local economy:

- Rate the current state of the economy in your local area using a scale from 1 to 7, where 7 means a very strong economy today and 1 means a very weak economy.

③ A six month outlook for the local economy:

- Looking ahead six months from now, do you expect the economy in your local area to be much stronger, somewhat stronger, about the same, somewhat weaker, or much weaker than it is now?



Global Average of National Economic Assessment Down One Point: 39%

- Continuing a downward trend, the average **global economic assessment of national economies surveyed in 24 countries is down one point as 39% of global citizens rate their national economies to be 'good'**.
- Saudi Arabia (92%) once again tops of the national economic assessment, followed by India (80%), Germany (79%), China (75%), Sweden (69%) and Canada (61%). France and Italy (both - 9%) tie for the lowest average global economic assessment this month. Other countries at the bottom of the average are: Brazil (11%), Hungary (13%), South Korea (13%) and Spain (13%).
- *Countries with the greatest improvements in this wave:* Japan (31%, +5 pts.), China (75%, +4 pts.), Great Britain (48%, +4 pts.), Russia (32%, +4 pts.), Germany (79%, +3 pts.), Canada (61%, +2 pts.), Belgium (41%, +2 pts.) and Poland (29%, +2 pts.).
- *Countries with the greatest declines:* South Africa (18%, -9 pts.), Mexico (16%, -6 pts.), Australia (51%, -5 pts.), Sweden (69%, -4 pts.), Turkey (39%, -4 pts), Hungary (13%, -3 pts.), Saudi Arabia (92%, -2 pts.) Israel (34%, -2 pts), Brazil (11%, -1 pts) and France (9%, -1 pts.).

Global Average of Local Economic Assessment (31%) Up One Point

- When asked to assess their local economies, **31% agree the state of the current economy in their local area is ‘good,’ on the global aggregate level. The local economic assessment up one point since last sounding.**
- Saudi Arabia (73%) leads in the local economic assessment average, followed by India (58%), China (56%), Germany (55%), Sweden (53%), Israel (49%) and the United States (40%). Small minority assess their local economy as ‘good’ in South Korea (10%) followed by France (11%), Italy (12%), Hungary (13%), Spain (13%), Mexico (14%) and South Africa (16%).
- *Countries with the greatest improvements in this wave:* Turkey (38%, +9 pts.), India (58%, +8 pts.), Russia (30%, +8 pts.), Great Britain (38%, +6 pts.), Saudi Arabia (73%, +5 pts.), Poland (22%, +5 pts.), China (56%, +3 pts.) and Argentina (22%, +3 pts.).
- *Countries with the greatest declines:* Sweden (53%, -6 pts.), France (11%, -4 pts.), Canada (37%, -3 pts.), South Korea (10%, -3 pts.), Israel (49%, -2 pts.), Brazil (20%, -2 pts.), South Africa (16%, -2 pts.) and Mexico (14%, -1 pts.).

Global Average of Future Outlook for Local Economy (24%) Unchanged

- The future outlook average remains unchanged, as one quarter (24%) of global citizens expect their local economy will be stronger six months from now.
- India (67%) continues to lead the future outlook assessment, followed by Saudi Arabia (66%), Brazil (52%), China (49%), Argentina (32%) and the United States (29%). Once again, only a fistful in France (5%) expect their local economy to be strong six months from now, followed by South Korea (9%), Belgium (10%), Hungary (10%), Italy (11%), Sweden (11%), South Africa (12%) and Australia (13%).
- *Countries with the greatest improvements in this wave:* Russia (26%, +8 pts.), Israel (15%, +7 pts.), Saudi Arabia (66%, +6 pts.), China (49%, +5 pts.), Great Britain (21%, +4 pts.), India (67%, +3 pts.) and Poland (15%, +3 pts.).
- *Countries with the greatest declines:* Mexico (25%, -13 pts.), Germany (16%, -5 pts.), Australia (13%, -4 pts.), South Africa (12%, -4 pts.), South Korea (9%, -2 pts.), Canada (16%, -1 pts.), Italy (11%, -1 pts.) and Hungary (10%, -1 pts.).

1. National Economic Assessments: Countries at a Glance Compared to the Last Wave...

Those Countries Where the National Area Economic Assessment...

is HIGHEST this month		has experienced an IMPROVEMENT since last sounding			has experienced a DECLINE since last sounding			is LOWEST this month	
Saudi Arabia	92%	Japan	▲	5	South Africa	▼	9	France	9%
India	80%	China	▲	4	Mexico	▼	6	Italy	9%
Germany	79%	Great Britain	▲	4	Australia	▼	5	Brazil	11%
China	75%	Russia	▲	4	Sweden	▼	4	Hungary	13%
Sweden	69%	Germany	▲	3	Turkey	▼	4	South Korea	13%
Canada	61%	Canada	▲	2	Hungary	▼	3	Spain	13%
Australia	51%	Belgium	▲	2	Saudi Arabia	▼	2	Mexico	16%
Great Britain	48%	Poland	▲	2	Israel	▼	2	South Africa	18%
US	47%	Argentina	▲	1	Brazil	▼	1	Argentina	25%
Belgium	41%	Spain	▲	1	France	▼	1	Poland	29%
Turkey	39%	Italy	▲	1				Japan	31%
Israel	34%							Russia	32%

Thinking about our economic situation, how would you describe the current economic situation in [insert country]?
Is it very good, somewhat good, somewhat bad or very bad?

1. National Economic Assessment: Regions at a Glance Compared to the Last Wave...

REGION (in descending order by NET)	NET 'Good'	CHANGE (since last sounding)
North America	54%	▲ 1%
BRIC	50%	▲ 2%
Middle East/Africa	50%	▼ 6%
APAC	47%	▲ 1%
G-8 Countries	40%	▲ 3%
Europe	34%	N/C
LATAM	17%	▼ 2%

Thinking about our economic situation, how would you describe the current economic situation in [insert country]?
Is it very good, somewhat good, somewhat bad or very bad?

2. Local Economic Assessment: Countries at a Glance Compared to the Last Wave...

Those Countries Where the Local Area Economic Assessment...

is HIGHEST this month		has experienced an IMPROVEMENT since last sounding			has experienced a DECLINE since last sounding			is LOWEST this month	
Saudi Arabia	73%	Turkey	▲	9	Sweden	▼	6	South Korea	10%
India	58%	India	▲	8	France	▼	4	France	11%
China	56%	Russia	▲	8	Canada	▼	3	Italy	12%
Germany	55%	Great Britain	▲	6	South Korea	▼	3	Hungary	13%
Sweden	53%	Saudi Arabia	▲	5	Israel	▼	2	Spain	13%
Israel	49%	Poland	▲	5	Brazil	▼	2	Mexico	14%
US	40%	China	▲	3	South Africa	▼	2	South Africa	16%
Great Britain	38%	Argentina	▲	3	Mexico	▼	1	Japan	17%
Turkey	38%	Germany	▲	2				Brazil	20%
Canada	37%	US	▲	2				Argentina	22%
Australia	35%	Japan	▲	2				Poland	22%
Russia	30%	Hungary	▲	1				Belgium	23%
		Italy	▲	1					

Rate the current state of the economy in your local area using a scale from 1 to 7, where 7 means a very strong economy today and 1 means a very weak economy

2. Local Economic Assessment: Regions at a Glance Compared to the Last Wave...

REGION (in descending order by NET)	NET 'Strong' Top 3 Box (5-6-7)	CHANGE (since last sounding)
Middle East/Africa	42%	▲4%
BRIC	41%	▲4%
North America	38%	▼1%
APAC	34%	▲2%
G-8 Countries	30%	▲2%
Europe	27%	▲1%
LATAM	19%	N/C

Rate the current state of the economy in your local area using a scale from 1 to 7, where 7 means a very strong economy today and 1 means a very weak economy

3. Six Month Outlook on the Local Economy: Countries at a Glance Compared to the Last Wave...

Countries where the Assessment of the Local Economic Strengthening ...

is HIGHEST this month		has experienced an IMPROVEMENT since last sounding			has experienced a DECLINE since last sounding			is LOWEST this month	
India	67%	Russia	▲	8	Mexico	▼	13	France	5%
Saudi Arabia	66%	Israel	▲	7	Germany	▼	5	South Korea	9%
Brazil	52%	Saudi Arabia	▲	6	Australia	▼	4	Belgium	10%
China	49%	China	▲	5	South Africa	▼	4	Hungary	10%
Argentina	32%	Great Britain	▲	4	South Korea	▼	2	Italy	11%
US	29%	India	▲	3	Canada	▼	1	Sweden	11%
Russia	26%	Poland	▲	3	Italy	▼	1	South Africa	12%
Mexico	25%	US	▲	2	Hungary	▼	1	Australia	13%
Turkey	22%	Brazil	▲	1				Israel	15%
Great Britain	21%	Japan	▲	1				Japan	15%
Spain	20%	Sweden	▲	1				Poland	15%
Canada	16%								
Germany	16%								

Looking ahead six months from now, do you expect the economy in your local area to be much stronger, somewhat stronger, about the same, somewhat weaker, or much weaker than it is now?

3. Six Month Outlook on Local Economy: Regions at a Glance Compared to Last Wave...

REGION (in descending order by NET)	NET 'Stronger'	CHANGE (since last sounding)
BRIC	48%	▲4%
LATAM	36%	▼4%
Middle East/Africa	33%	▼2%
APAC	30%	▲2%
North America	22%	N/C
G-8 Countries	17%	▲1%
Europe	13%	N/C

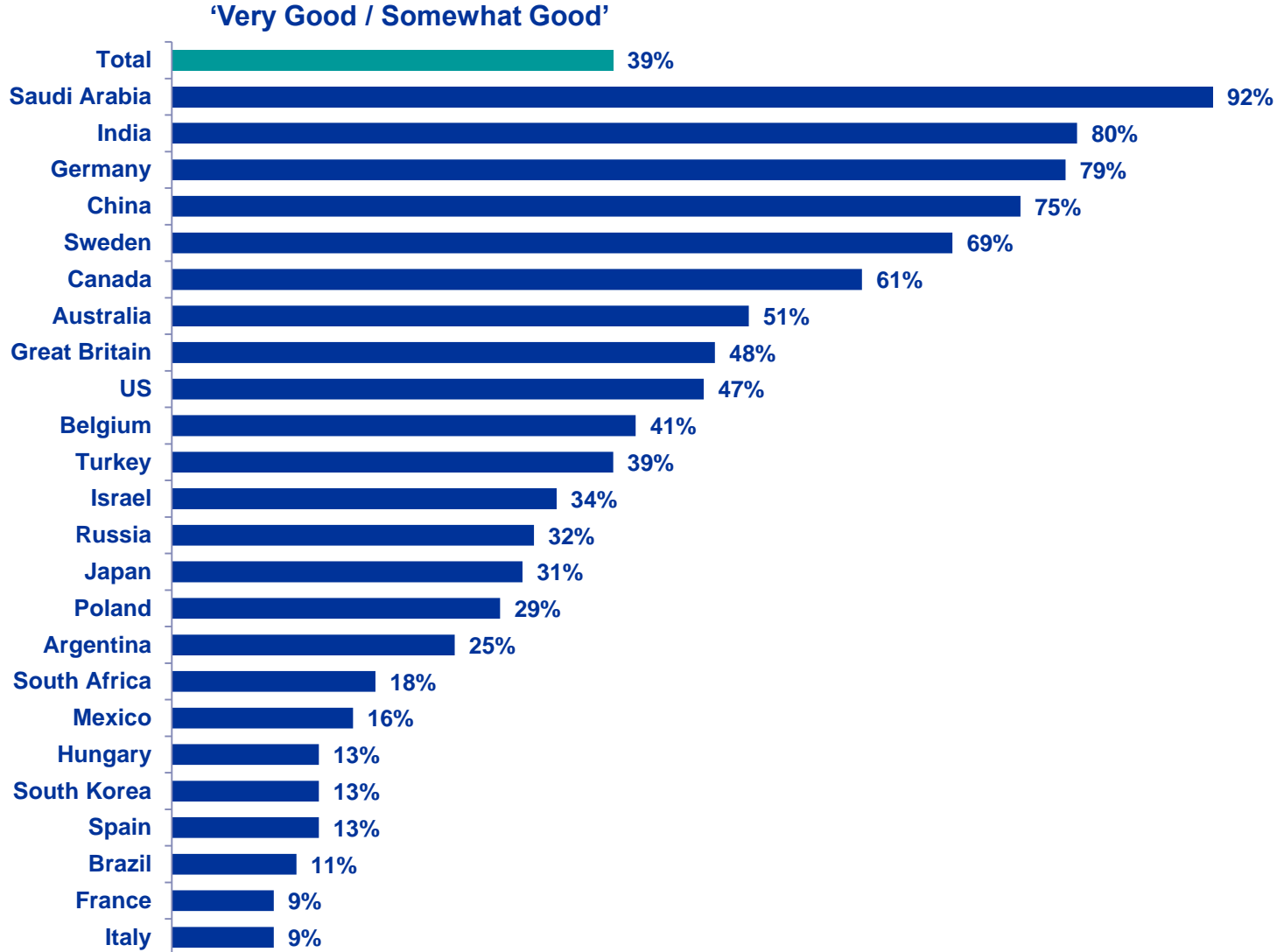
DETAILED FINDINGS

① Assessing The Current Economic Situation ...

...in Their Country

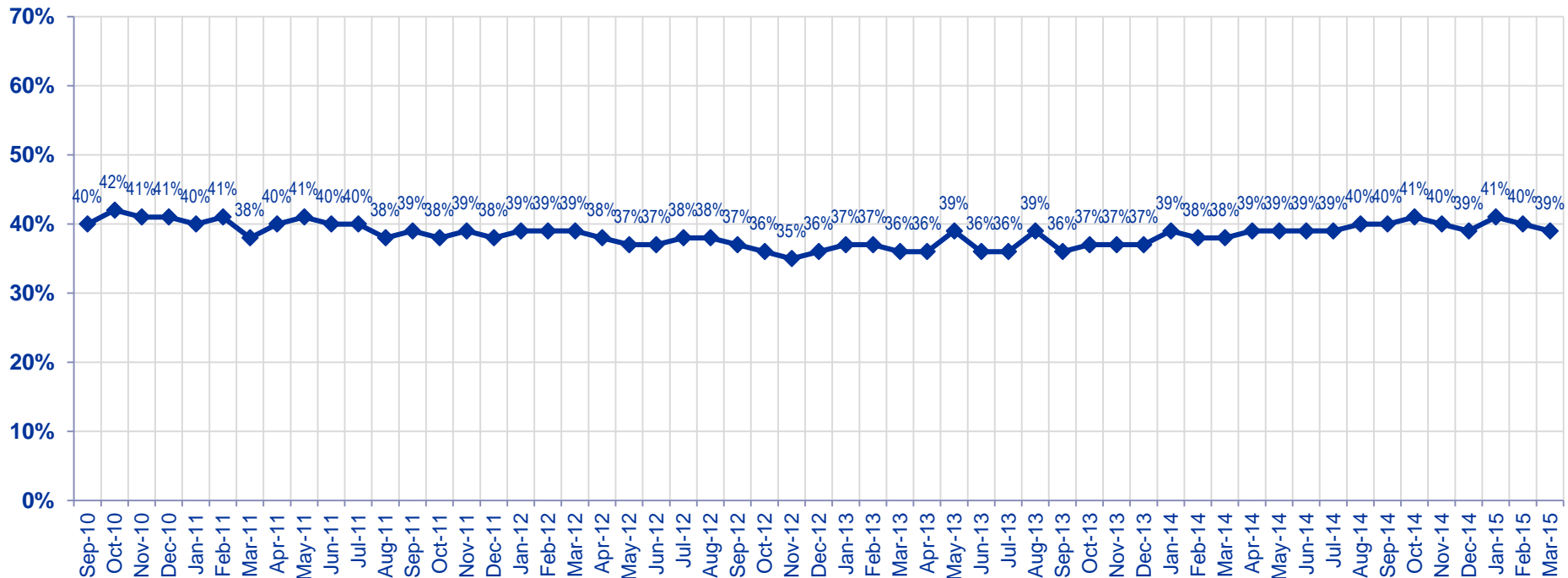


Global Citizens Assess the Current Economic Situation in their Country as “Good”



Now thinking about our economic situation, how would you describe the current economic situation in [insert country]? Is it very good, somewhat good, somewhat bad or very bad?

Total Good



Now thinking about our economic situation, how would you describe the current economic situation in [insert country]?
Is it very good, somewhat good, somewhat bad or very bad?



For All Countries Tracked: Citizens Assess the Current Economic Situation in their Country as “Good”

Now thinking about our economic situation, how would you describe the current economic situation in [insert country]?
Is it very good, somewhat good, somewhat bad or very bad?

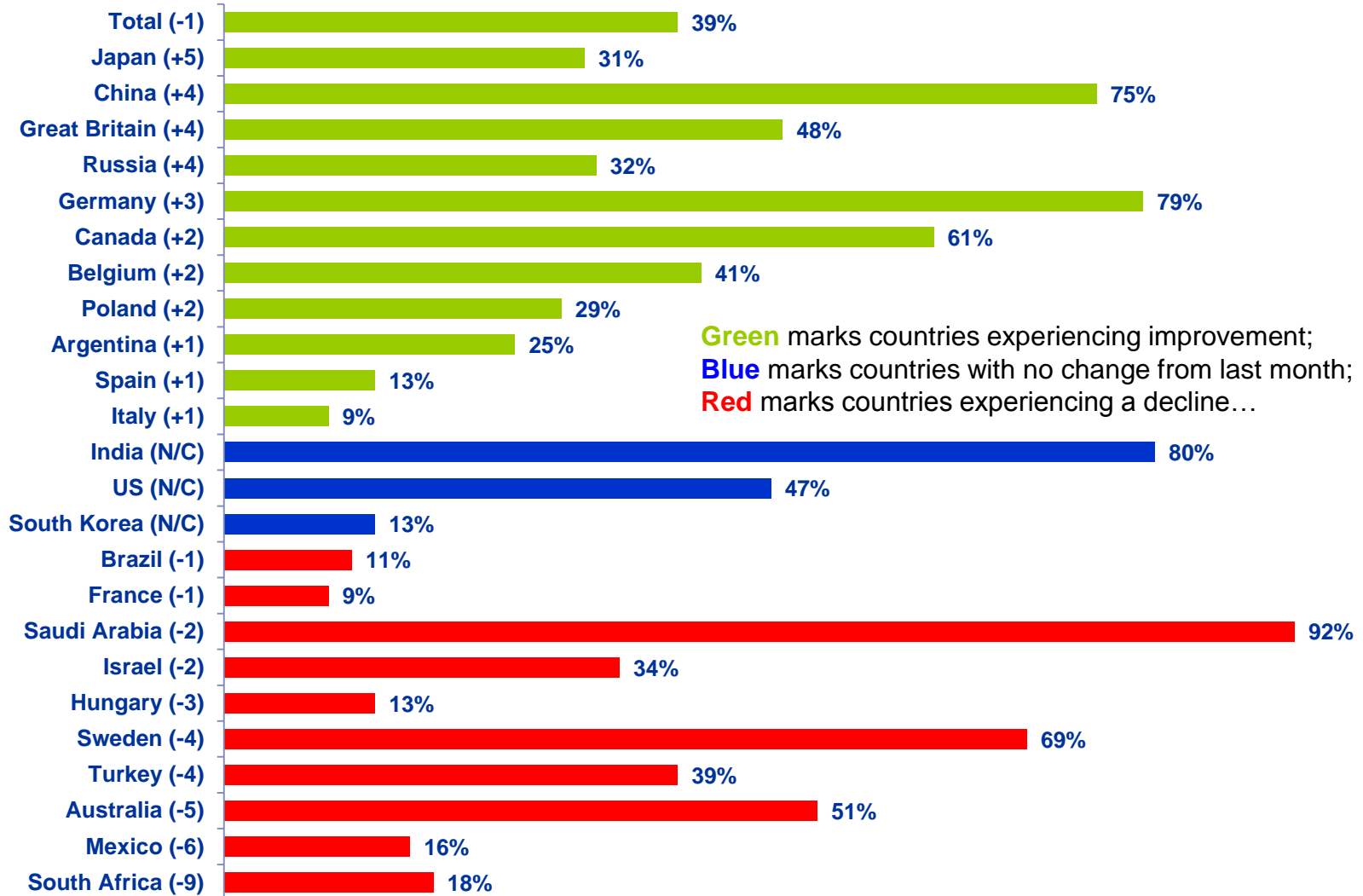
	May '12	Jun '12	Jul '12	Aug '12	Sep '12	Oct '12	Nov '12	Dec '12	Jan '13	Feb '13	Mar '13	Apr '13	May '13	Jun '13	Jul '13	Aug '13	Sep '13	Oct '13	Nov '13	Dec '13	Jan '14	Feb '14	Mar '14	Apr '14	May '14	Jun '14	Jul '14	Aug '14	Sep '14	Oct '14	Nov '14	Dec '14	Jan '15	Feb '15	Mar '15	
Total	37%	37%	38%	38%	37%	36%	35%	36%	37%	37%	36%	36%	39%	36%	36%	39%	36%	37%	37%	37%	39%	38%	38%	39%	39%	39%	39%	40%	40%	41%	40%	39%	41%	40%	39%	
Argentina	45%	34%	37%	34%	36%	36%	33%	37%	40%	37%	30%	31%	25%	26%	28%	27%	31%	31%	26%	26%	28%	21%	18%	17%	18%	24%	21%	24%	19%	21%	19%	20%	21%	24%	25%	
Australia	61%	61%	58%	59%	62%	61%	61%	63%	59%	59%	57%	62%	54%	57%	57%	56%	62%	64%	63%	58%	59%	57%	54%	60%	53%	52%	56%	57%	58%	65%	63%	57%	58%	56%	51%	
Belgium	28%	29%	34%	35%	36%	28%	15%	21%	27%	25%	25%	29%	27%	27%	37%	38%	36%	34%	31%	30%	40%	37%	37%	40%	42%	39%	41%	40%	37%	35%	33%	31%	33%	39%	41%	
Brazil	49%	52%	58%	51%	56%	57%	51%	55%	52%	47%	48%	42%	42%	35%	26%	28%	30%	35%	34%	35%	37%	26%	24%	26%	20%	31%	24%	25%	26%	32%	23%	22%	17%	12%	11%	
Canada	62%	62%	63%	65%	66%	68%	64%	66%	66%	65%	65%	59%	63%	66%	65%	66%	64%	66%	68%	63%	62%	63%	66%	64%	65%	63%	70%	68%	65%	65%	67%	66%	63%	59%	61%	
China	63%	60%	67%	53%	58%	63%	63%	64%	68%	69%	72%	64%	66%	59%	66%	62%	61%	65%	61%	72%	63%	69%	69%	68%	66%	65%	69%	73%	74%	70%	78%	71%	80%	71%	75%	
Egypt																					64%	56%	36%	32%		55%	57%	61%	68%	76%	65%	78%	67%	61%		
France	9%	9%	8%	9%	6%	6%	5%	7%	5%	7%	6%	5%	3%	5%	6%	9%	8%	10%	5%	6%	8%	8%	10%	9%	9%	7%	8%	6%	5%	7%	6%	7%	7%	10%	9%	
Germany	69%	66%	68%	69%	68%	60%	63%	63%	65%	64%	64%	67%	62%	66%	69%	67%	69%	68%	73%	73%	75%	74%	76%	75%	75%	76%	77%	75%	79%	75%	74%	75%	81%	76%	79%	
Great Britain	10%	12%	11%	14%	14%	15%	17%	13%	13%	16%	12%	13%	21%	19%	23%	24%	24%	29%	26%	27%	28%	36%	36%	37%	43%	39%	41%	45%	42%	41%	45%	39%	46%	44%	48%	
Hungary	3%	4%	3%	5%	4%	4%	3%	5%	8%	6%	6%	7%	13%	10%	12%	11%	14%	10%	12%	17%	17%	14%	17%	24%	18%	17%	20%	18%	16%	23%	13%	15%	16%	16%	13%	
India	70%	58%	60%	68%	58%	58%	60%	68%	60%	65%	63%	66%	62%	60%	53%	54%	40%	51%	52%	56%	58%	61%	58%	60%	66%	75%	65%	72%	80%	80%	81%	81%	80%	80%	80%	
Israel																																			36%	34%
Italy	3%	3%	4%	5%	6%	6%	5%	5%	5%	4%	4%	4%	4%	6%	5%	8%	6%	5%	6%	6%	5%	7%	6%	10%	9%	7%	9%	8%	7%	8%	8%	7%	8%	8%	9%	
Japan	9%	9%	7%	11%	11%	9%	7%	6%	9%	16%	17%	20%	27%	18%	21%	21%	24%	21%	24%	25%	27%	29%	25%	26%	26%	29%	28%	27%	22%	20%	19%	19%	23%	26%	31%	
Mexico	28%	28%	32%	29%	34%	32%	39%	35%	38%	32%	31%	29%	31%	31%	28%	30%	23%	22%	22%	21%	20%	23%	24%	19%	20%	25%	26%	24%	22%	29%	23%	20%	19%	22%	16%	
Poland	25%	28%	33%	22%	19%	21%	18%	20%	17%	19%	15%	19%	16%	16%	20%	23%	20%	22%	24%	22%	24%	25%	22%	25%	31%	25%	26%	26%	28%	31%	35%	33%	28%	27%	29%	
Romania																									10%	14%	10%	7%	9%	12%	16%	16%				
Russia	36%	33%	29%	28%	31%	27%	29%	26%	24%	31%	27%	33%	30%	31%	34%	30%	31%	27%	29%	28%	28%	32%	39%	50%	58%	47%	50%	59%	53%	47%	41%	36%	26%	28%	32%	
Saudi Arabia	88%	83%	85%	84%	80%	79%	79%	82%	86%	85%	80%	80%	81%	85%	84%	82%	87%	85%	80%	82%	86%	85%	86%	89%	87%	85%	87%	85%	84%	87%	85%	84%	87%	94%	92%	
South Africa	33%	38%	39%	38%	31%	26%	22%	22%	33%	20%	19%	23%	31%	19%	20%	25%	21%	27%	27%	27%	24%	17%	21%	18%	28%	23%	21%	24%	26%	22%	26%	23%	26%	27%	18%	
South Korea	20%	21%	18%	17%	24%	16%	15%	15%	16%	21%	20%	14%	17%	18%	17%	20%	20%	19%	21%	17%	17%	23%	16%	23%	19%	17%	15%	17%	16%	14%	11%	12%	13%	13%	13%	
Spain	3%	3%	3%	4%	4%	3%	3%	2%	3%	4%	5%	3%	4%	4%	4%	5%	6%	4%	5%	6%	7%	8%	6%	10%	10%	8%	9%	11%	10%	7%	10%	9%	11%	12%	13%	
Sweden	64%	75%	71%	81%	65%	72%	69%	57%	73%	69%	73%	70%	72%	71%	76%	70%	71%	67%	77%	60%	72%	69%	80%	66%	64%	75%	73%	70%	77%	67%	67%	74%	72%	73%	69%	
Turkey	49%	51%	51%	56%	50%	44%	48%	47%	48%	51%	53%	55%	48%	50%	47%	46%	46%	50%	48%	45%	43%	39%	40%	44%	45%	45%	44%	49%	47%	43%	46%	39%	45%	43%	39%	
United States	23%	26%	25%	28%	26%	24%	28%	31%	29%	32%	31%	31%	33%	31%	33%	34%	33%	23%	30%	35%	35%	31%	31%	36%	37%	38%	33%	35%	36%	42%	41%	44%	51%	47%	47%	



Countries Ranked and Marked By Change In Assessment From Last Month (Left Column)

Thinking about our economic situation, how would you describe the current economic situation in [insert country]? Is it very good, somewhat good, somewhat bad or very bad?

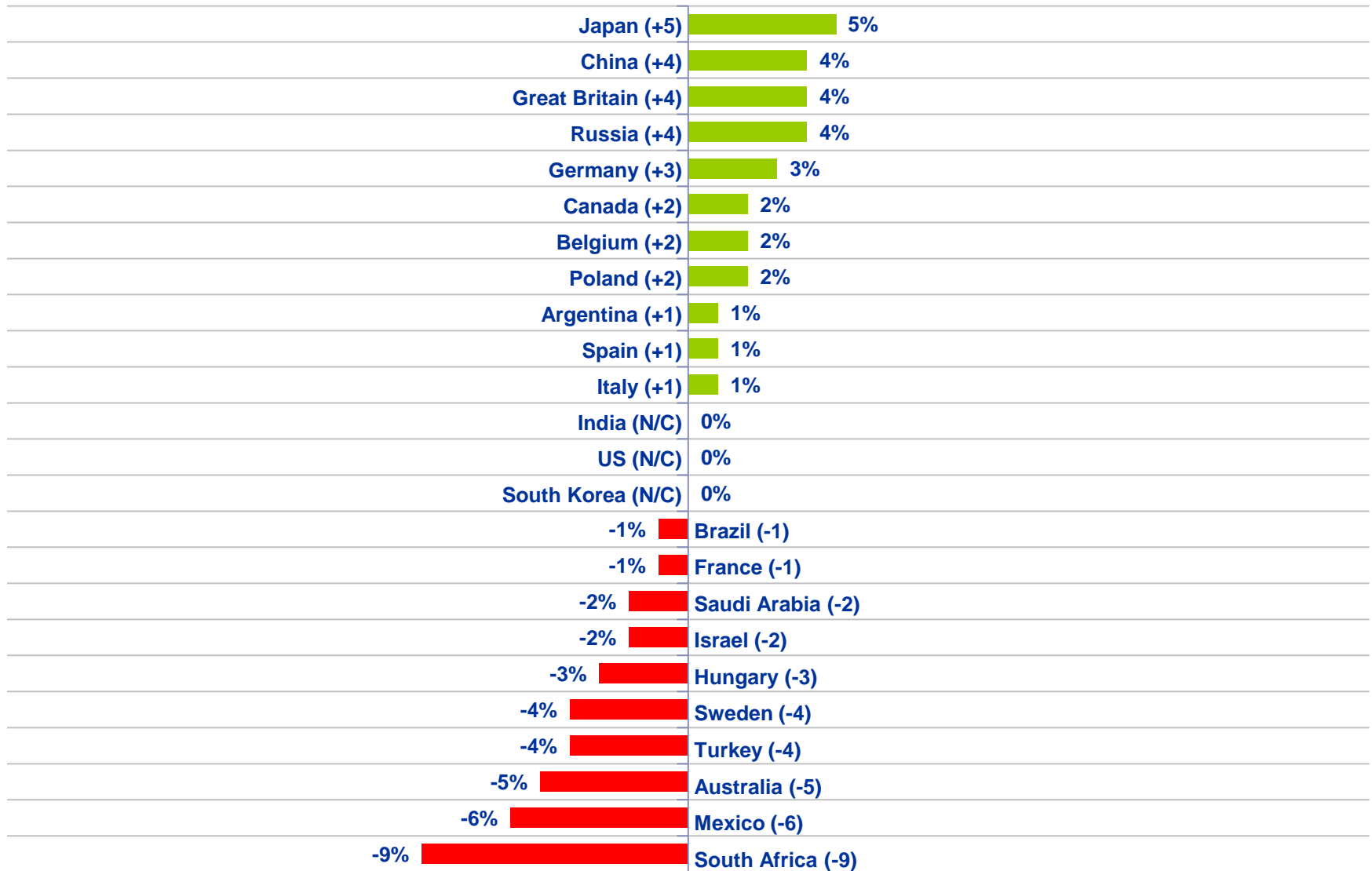
% Very Good / Somewhat Good





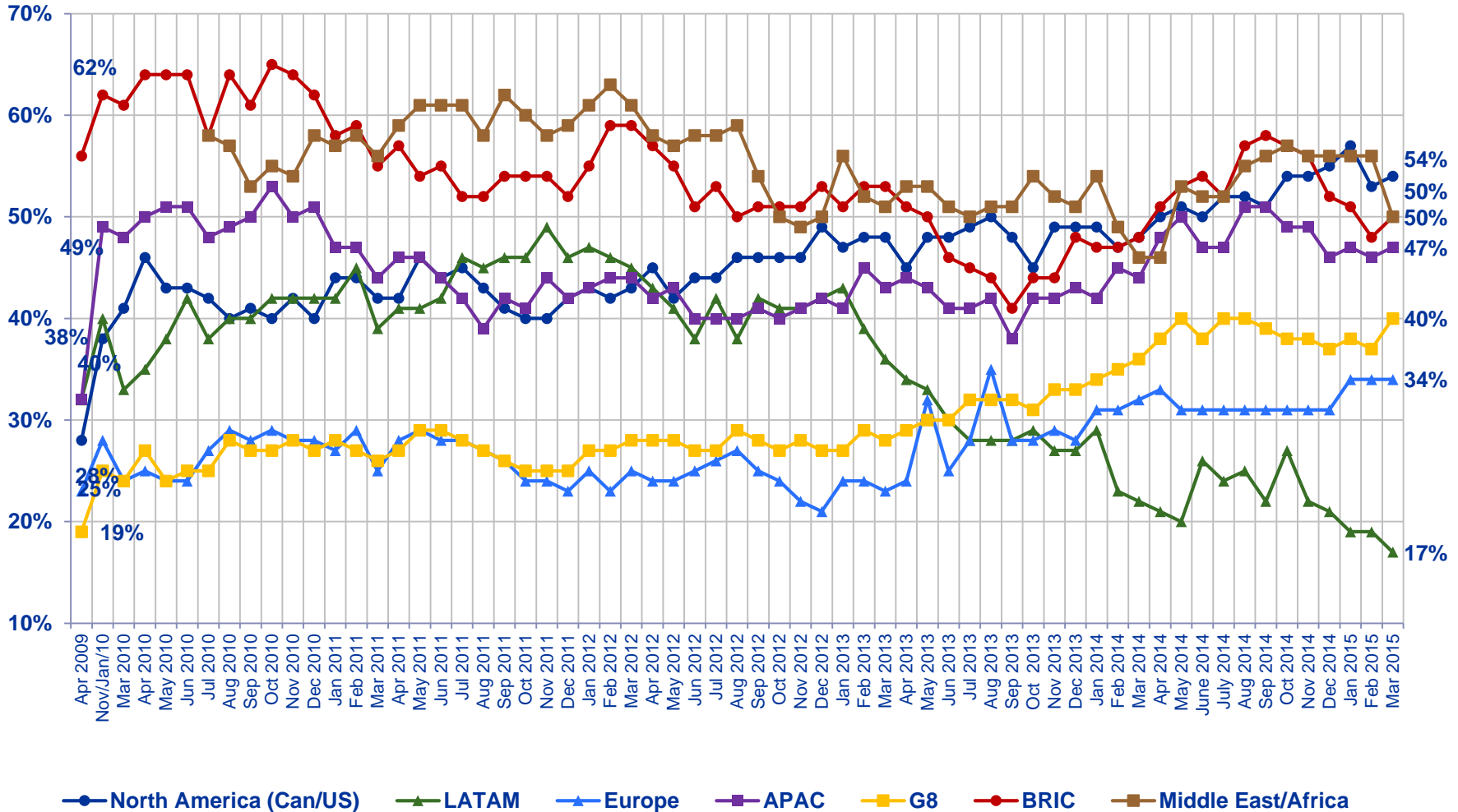
Countries Ranked by Net Improvement, Decline or No Change Compared to

Last Month: Thinking about our economic situation, how would you describe the current economic situation in [insert country]?
Is it very good, somewhat good, somewhat bad or very bad?



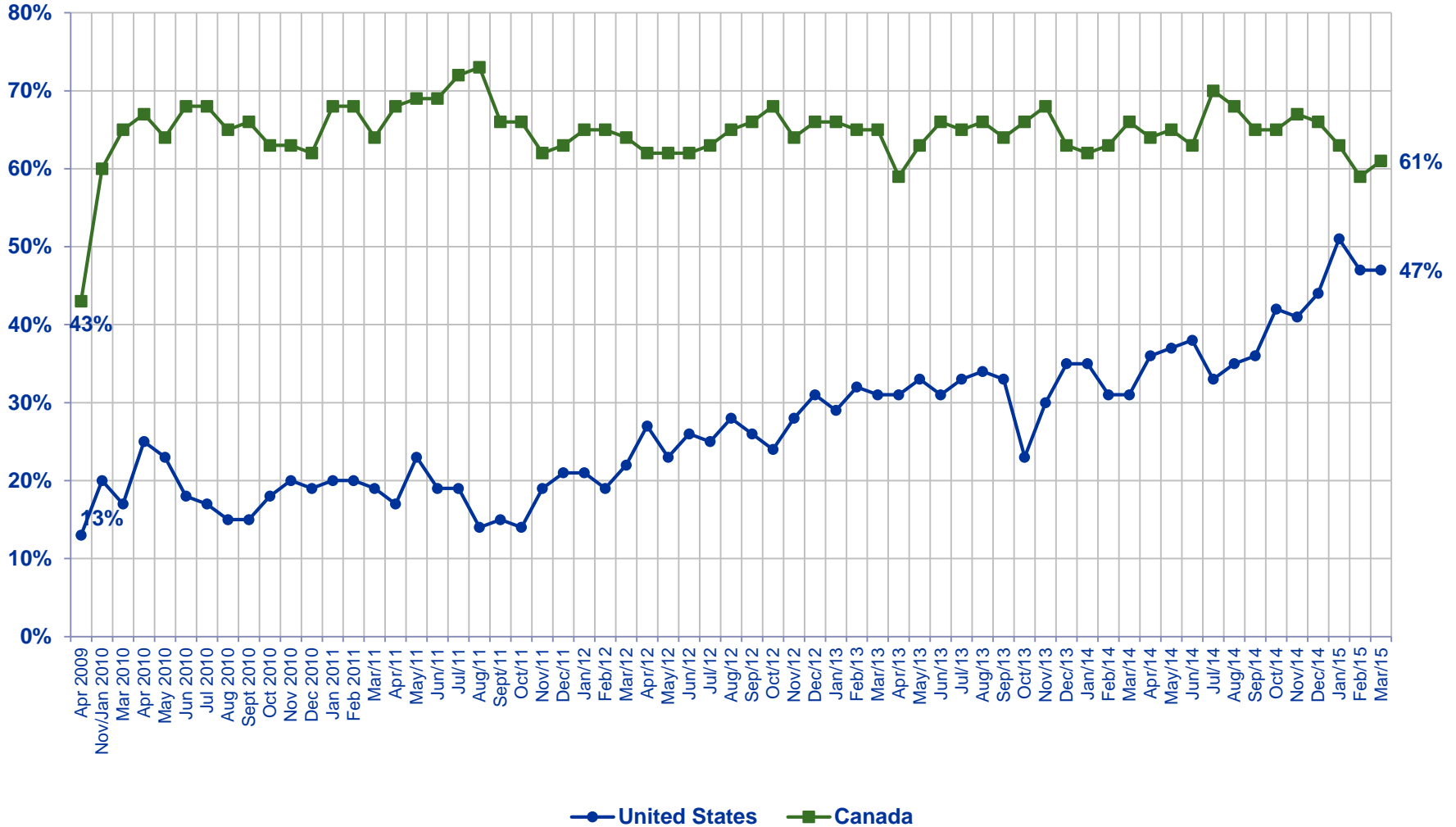
Assessing the Current Economic Situation by All Regions:

Very Good / Somewhat Good



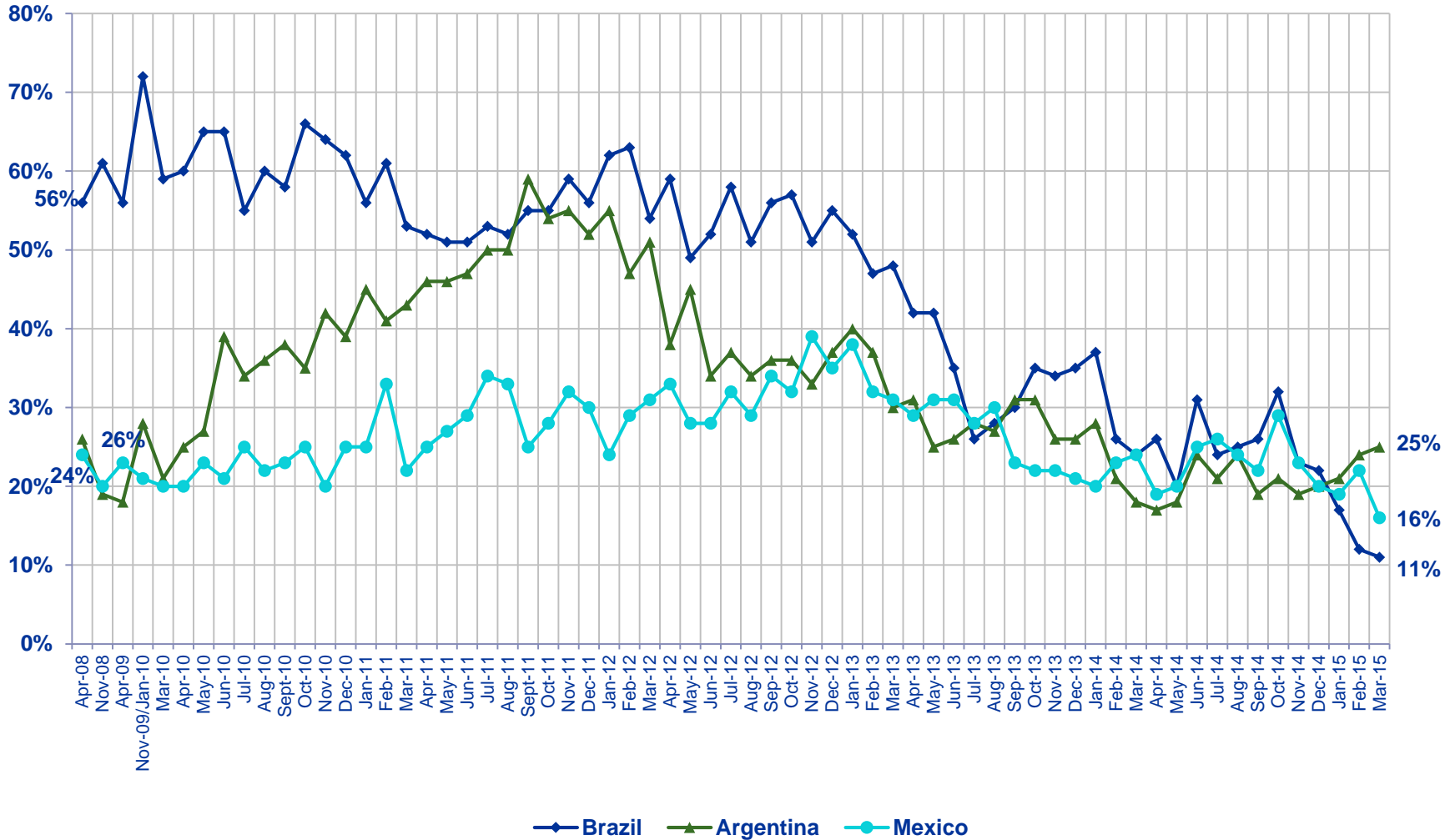
Now thinking about our economic situation, how would you describe the current economic situation in [insert country]?
Is it very good, somewhat good, somewhat bad or very bad?

Very Good / Somewhat Good



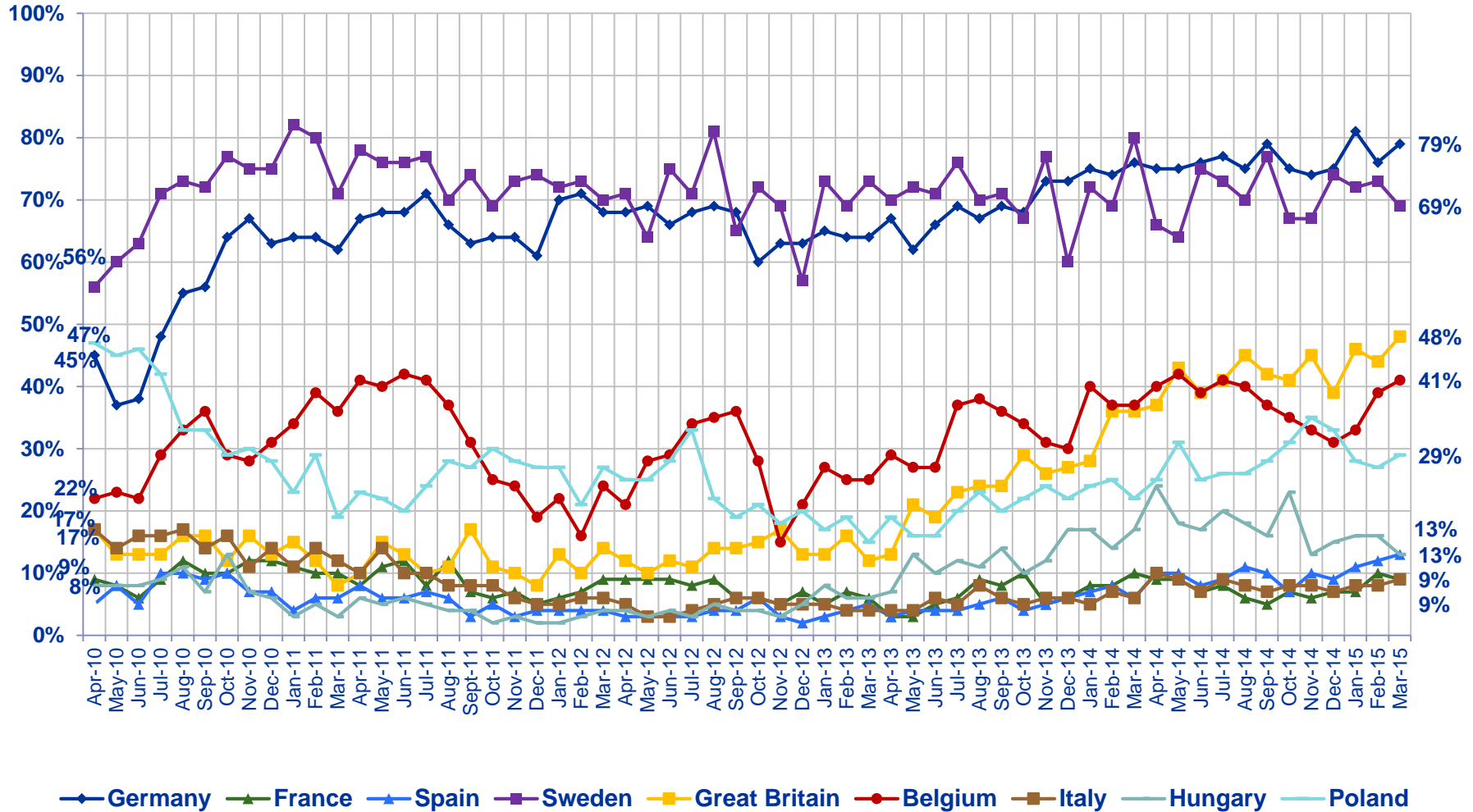
Now thinking about our economic situation, how would you describe the current economic situation in [insert country]?
Is it very good, somewhat good, somewhat bad or very bad?

Very Good / Somewhat Good



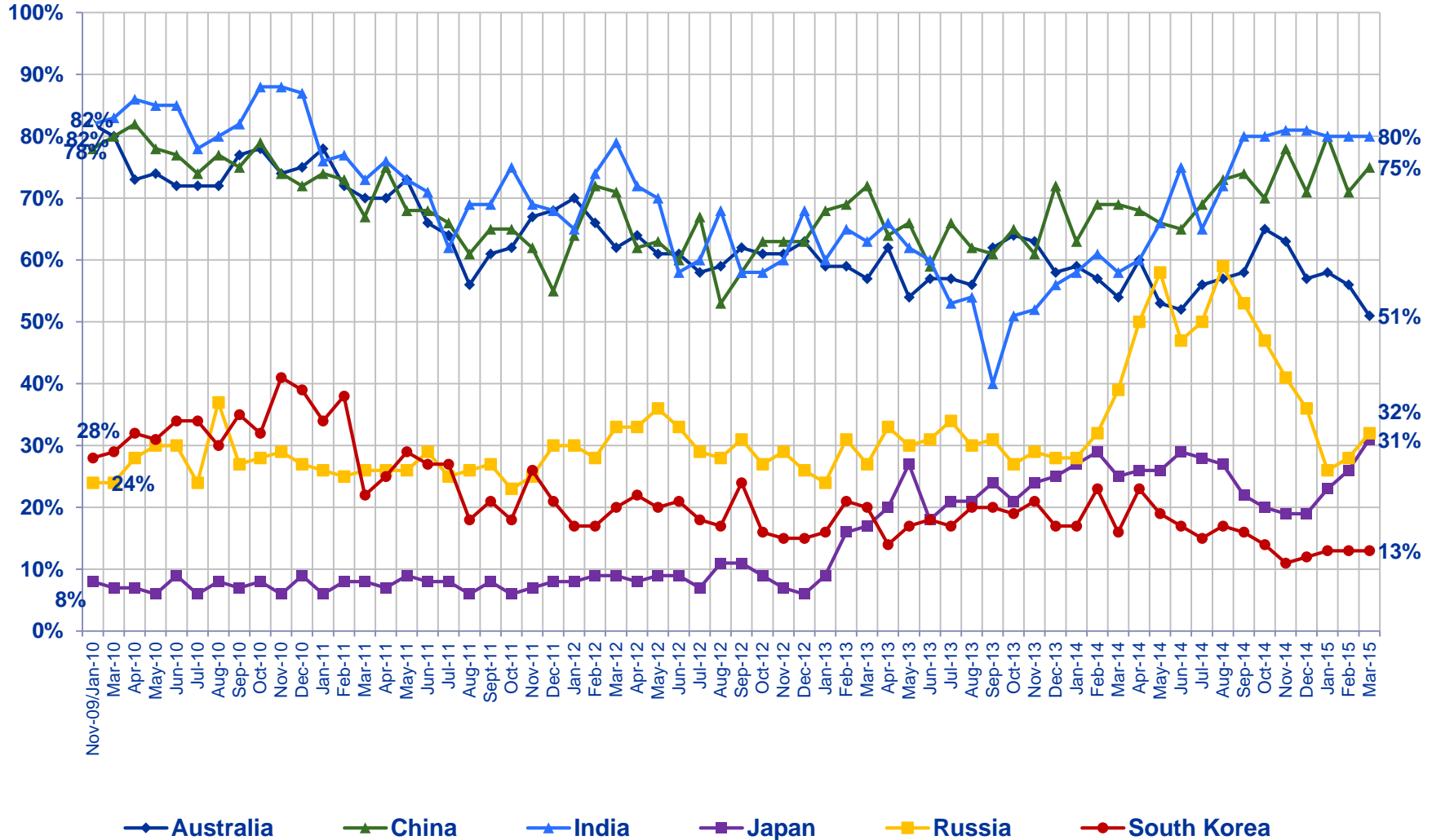
Now thinking about our economic situation, how would you describe the current economic situation in [insert country]?
Is it very good, somewhat good, somewhat bad or very bad?

Very Good / Somewhat Good



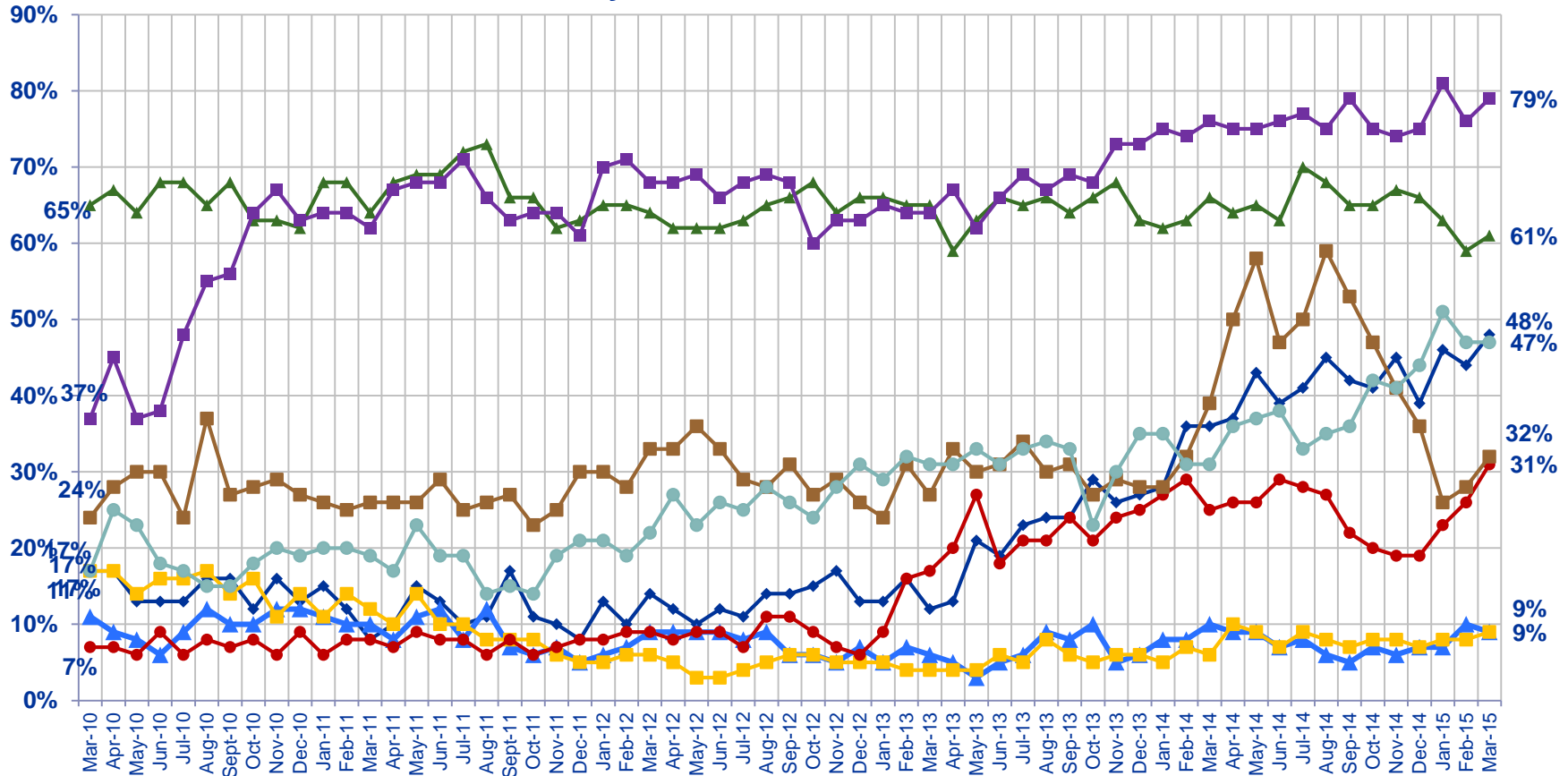
Now thinking about our economic situation, how would you describe the current economic situation in [insert country]?
Is it very good, somewhat good, somewhat bad or very bad?

Very Good / Somewhat Good



Now thinking about our economic situation, how would you describe the current economic situation in [insert country]?
Is it very good, somewhat good, somewhat bad or very bad?

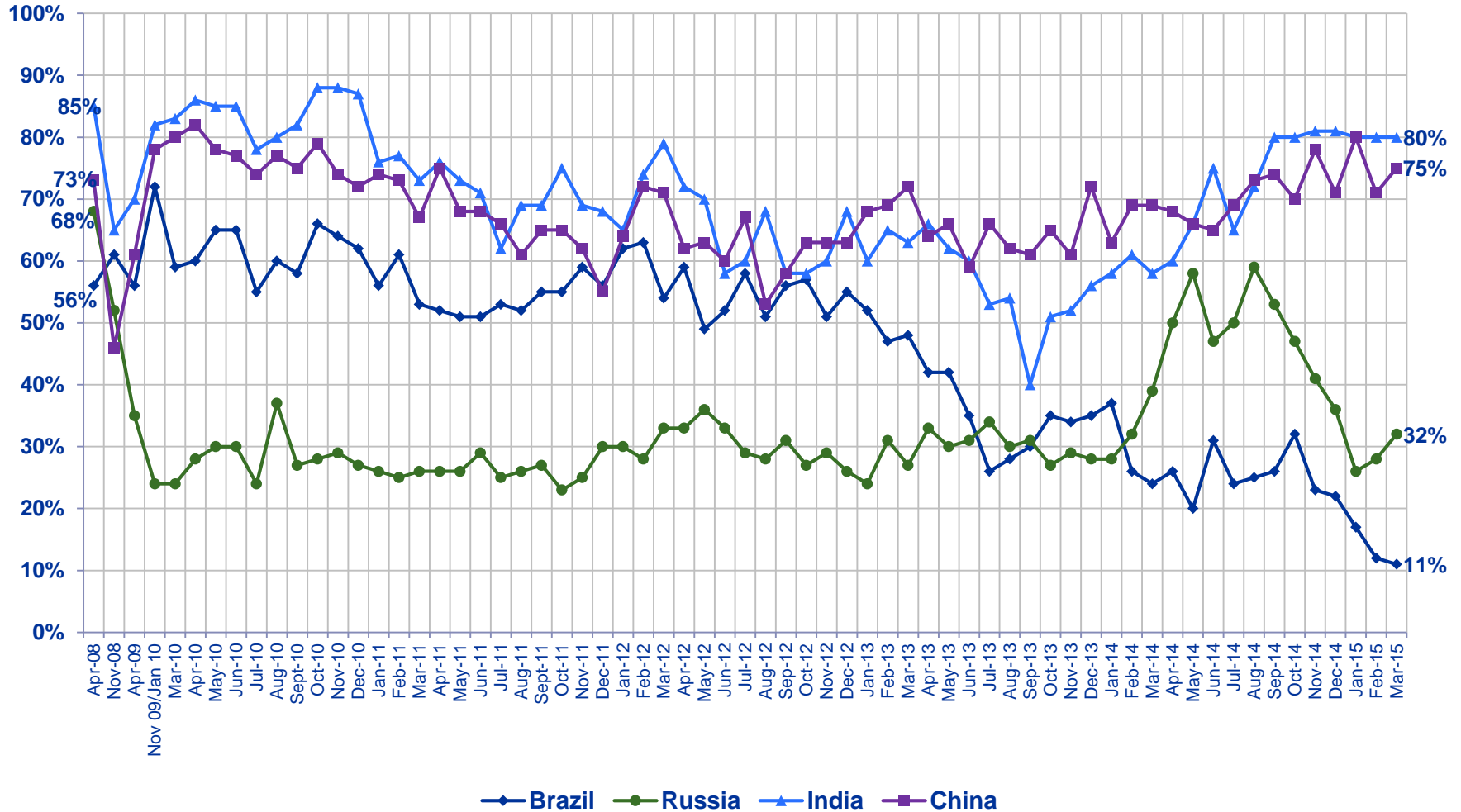
Very Good / Somewhat Good



◆ Great Britain
▲ Canada
▲ France
■ Germany
■ Italy
● Japan
■ Russia
● United States

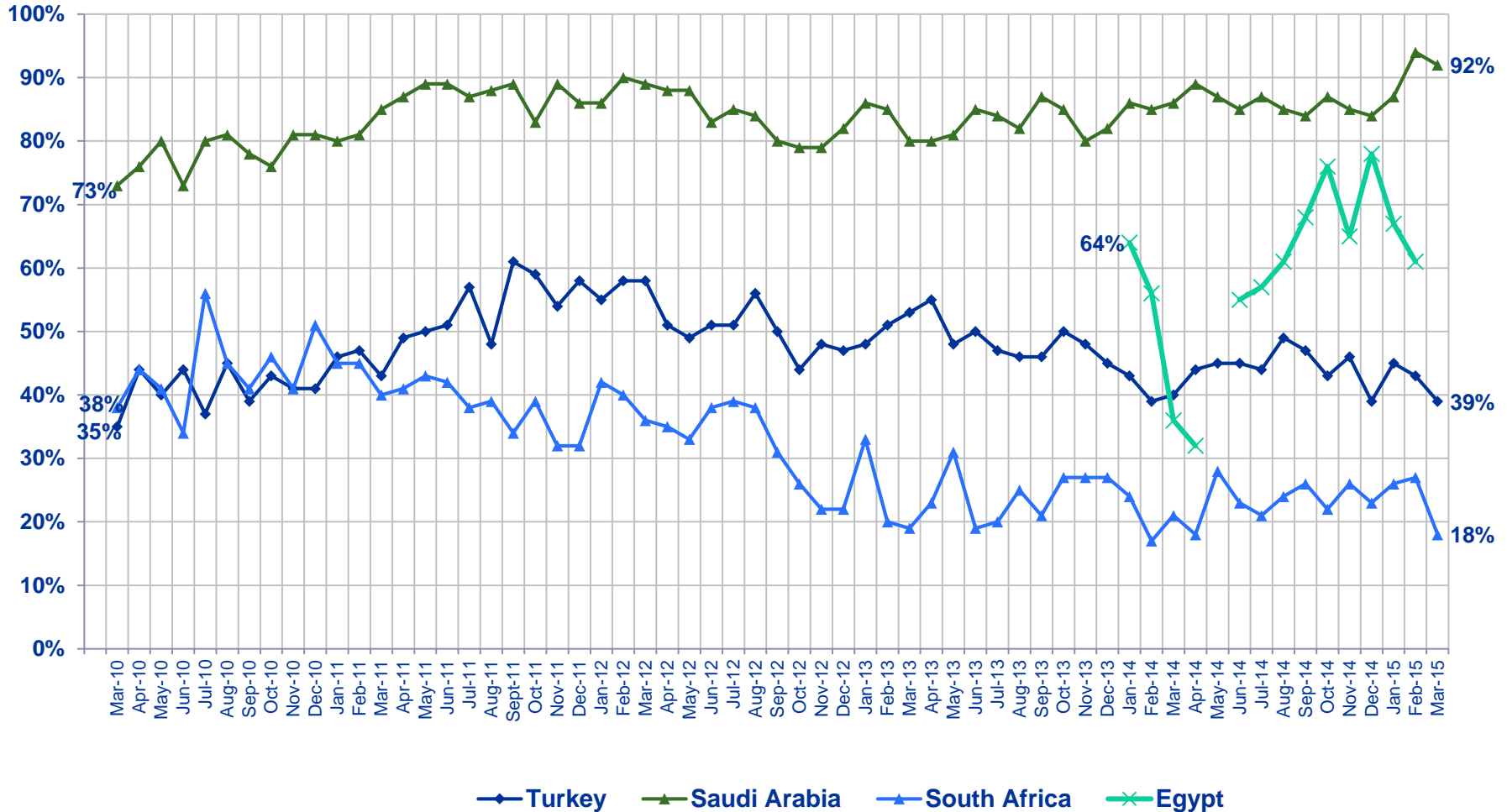
Now thinking about our economic situation, how would you describe the current economic situation in [insert country]?
 Is it very good, somewhat good, somewhat bad or very bad?

Very Good / Somewhat Good



Now thinking about our economic situation, how would you describe the current economic situation in [insert country]?
Is it very good, somewhat good, somewhat bad or very bad?

Very Good / Somewhat Good



Now thinking about our economic situation, how would you describe the current economic situation in [insert country]?
Is it very good, somewhat good, somewhat bad or very bad?

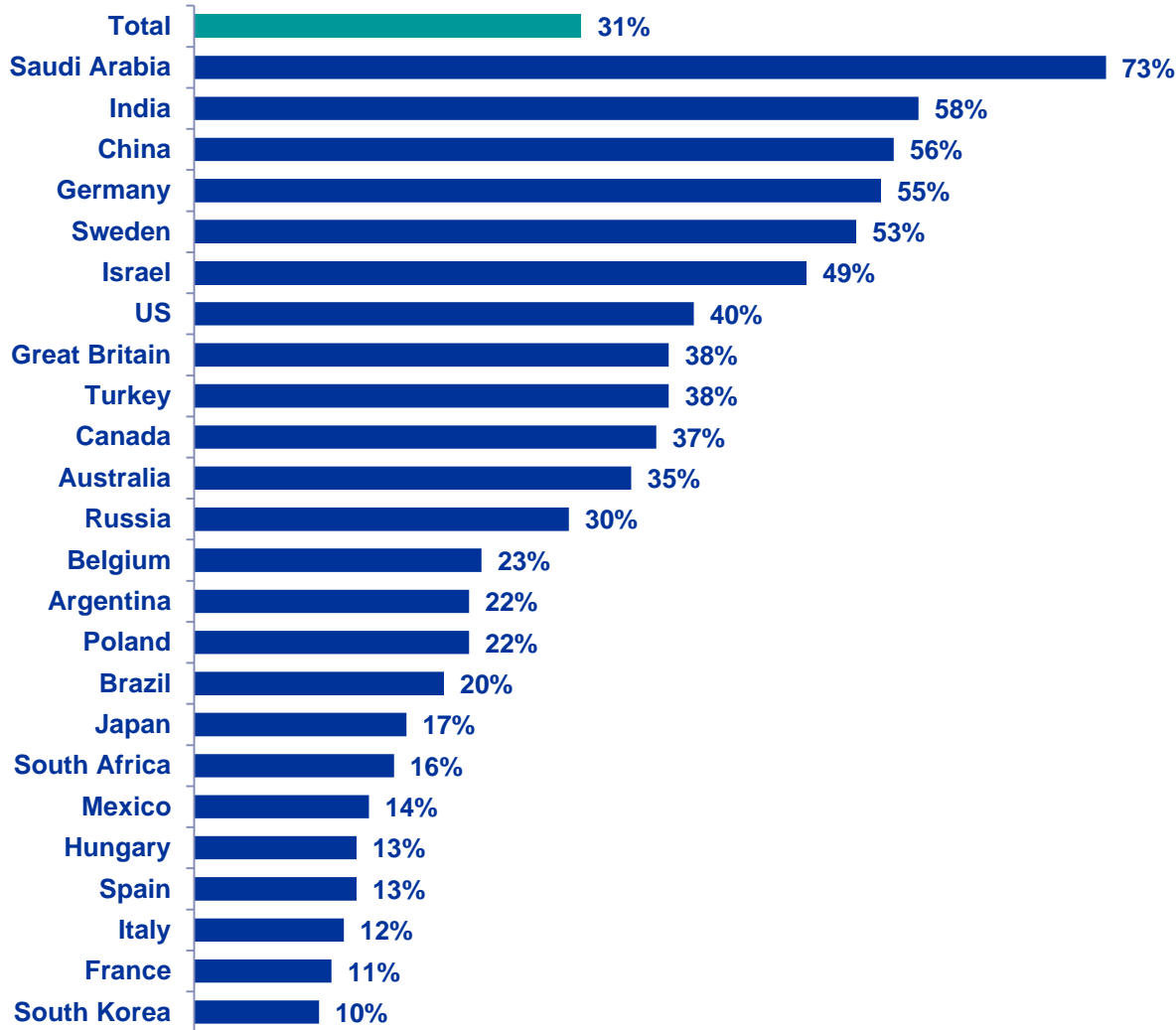
② Assessing The Economy...

...In Their Local Area



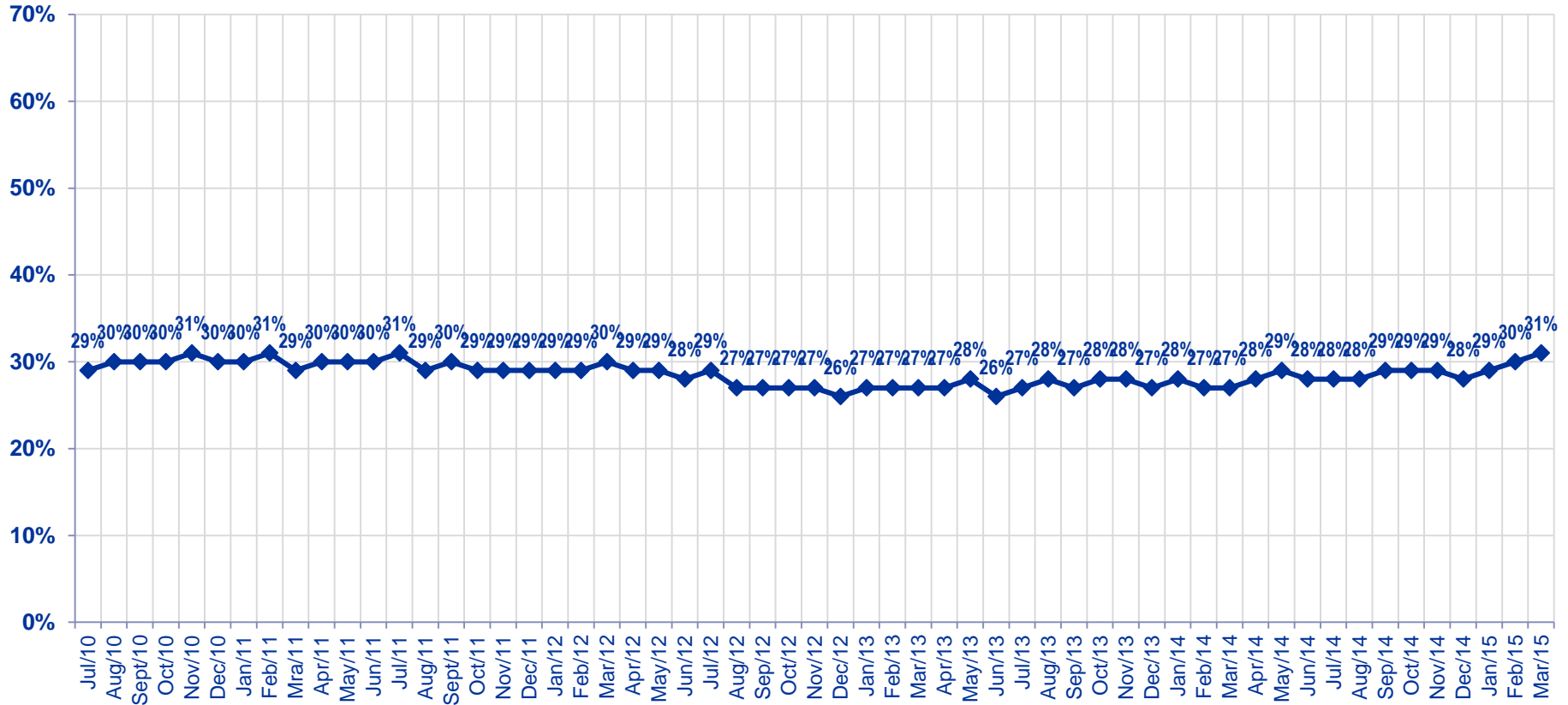
Citizen Consumers Who Say The Economy In Their Local Area is Strong...

% Strong (Top 3: 5-6-7)



Rate the current state of the economy in your local area using a scale from 1 to 7, where 7 means a very strong economy today and 1 means a very weak economy

Total - % Strong (Top 3: 5-6-7)



Rate the current state of the economy in your local area using a scale from 1 to 7, where 7 means a very strong economy today and 1 means a very weak economy.



Citizen Consumers Who Say The Economy In Their Local Area is Strong

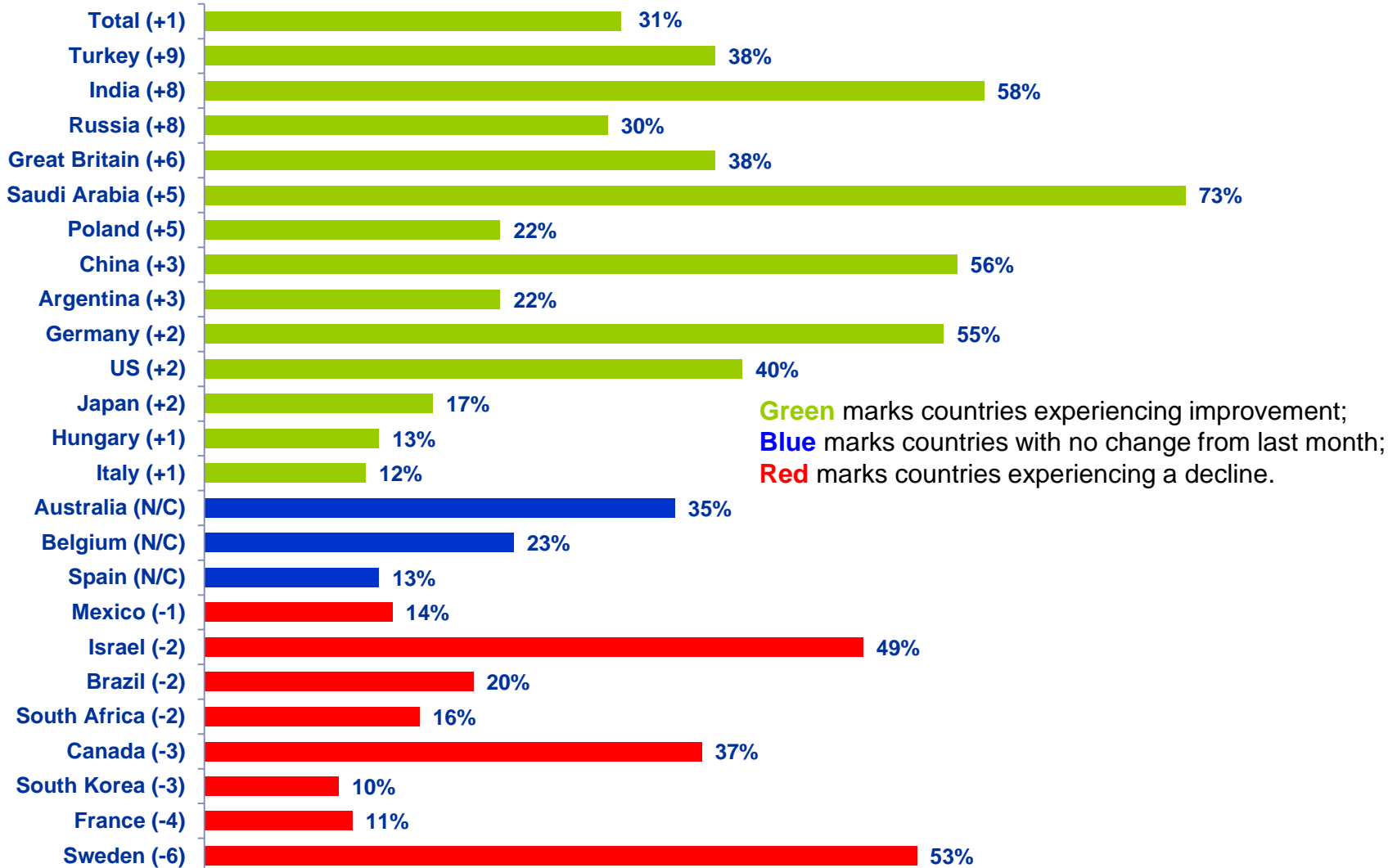
% Strong (Top 3 5-6-7)

	May '12	Jun '12	Jul '12	Aug '12	Sep '12	Oct '12	Nov '12	Dec '12	Jan '13	Feb '13	Mar '13	Apr '13	May '13	Jun '13	Jul '13	Aug '13	Sep '13	Oct '13	Nov '13	Dec '13	Jan '14	Feb '14	Mar '14	Apr '14	May '14	Jun '14	Jul '14	Aug '14	Sep '14	Oct '14	Nov '14	Dec '14	Jan '15	Feb '15	Mar '15	
Total	29%	28%	29%	27%	27%	27%	27%	26%	27%	27%	27%	27%	28%	26%	27%	28%	27%	28%	28%	27%	28%	27%	27%	28%	29%	28%	28%	28%	29%	29%	29%	28%	29%	30%	31%	
Argentina	27%	17%	24%	22%	22%	21%	20%	23%	23%	22%	23%	22%	24%	20%	22%	20%	24%	26%	24%	22%	20%	20%	17%	13%	15%	23%	18%	17%	15%	20%	21%	17%	17%	19%	22%	
Australia	39%	43%	41%	38%	41%	42%	40%	42%	40%	40%	39%	42%	37%	38%	39%	37%	38%	39%	40%	36%	38%	39%	36%	40%	36%	35%	37%	39%	41%	42%	40%	38%	37%	35%	35%	
Belgium	19%	19%	20%	19%	22%	18%	13%	13%	17%	14%	15%	15%	14%	19%	22%	22%	22%	20%	20%	20%	23%	21%	19%	24%	25%	22%	24%	24%	20%	21%	22%	14%	20%	23%	23%	
Brazil	41%	39%	51%	41%	36%	42%	38%	44%	38%	39%	38%	36%	35%	28%	28%	31%	31%	32%	33%	33%	30%	23%	22%	31%	22%	30%	28%	25%	30%	30%	29%	26%	25%	22%	20%	
Canada	45%	46%	48%	44%	46%	44%	43%	42%	47%	46%	47%	41%	41%	47%	45%	44%	44%	45%	47%	44%	42%	41%	44%	40%	42%	42%	49%	47%	46%	48%	47%	41%	41%	40%	37%	
China	46%	44%	50%	50%	51%	47%	54%	47%	51%	50%	56%	48%	48%	43%	48%	47%	46%	49%	49%	53%	45%	52%	51%	52%	48%	47%	53%	53%	56%	51%	63%	60%	66%	53%	56%	
Egypt																					12%	19%	18%	14%		30%	24%	23%	24%	25%	26%	35%	28%	35%		
France	15%	14%	14%	15%	13%	10%	12%	12%	13%	12%	12%	12%	6%	10%	12%	11%	11%	12%	10%	12%	12%	12%	13%	13%	12%	11%	10%	12%	11%	12%	10%	12%	15%	11%		
Germany	47%	48%	45%	48%	47%	39%	43%	44%	48%	45%	47%	47%	43%	43%	48%	43%	50%	45%	50%	51%	51%	51%	54%	52%	55%	55%	53%	52%	57%	47%	52%	55%	56%	53%	55%	
Great Britain	13%	15%	14%	14%	16%	15%	17%	14%	14%	15%	14%	14%	15%	20%	20%	21%	17%	21%	22%	20%	21%	25%	26%	25%	28%	26%	29%	30%	29%	31%	33%	28%	33%	32%	38%	
Hungary	8%	7%	7%	8%	7%	8%	8%	7%	6%	7%	8%	9%	9%	10%	12%	11%	10%	10%	9%	12%	15%	12%	13%	13%	13%	12%	13%	13%	12%	15%	14%	13%	12%	12%	13%	
India	50%	39%	46%	48%	43%	41%	44%	45%	39%	39%	41%	36%	40%	38%	36%	34%	27%	32%	32%	36%	34%	37%	35%	38%	43%	47%	44%	47%	52%	53%	53%	51%	56%	50%	58%	
Israel																																			51%	49%
Italy	8%	7%	8%	9%	9%	8%	10%	8%	9%	9%	8%	6%	8%	8%	8%	8%	8%	7%	7%	6%	7%	9%	10%	11%	9%	9%	12%	8%	9%	11%	10%	8%	10%	11%	12%	
Japan	7%	8%	6%	8%	8%	6%	5%	5%	5%	7%	7%	9%	12%	8%	10%	11%	12%	10%	12%	13%	12%	16%	13%	14%	14%	15%	15%	13%	11%	11%	10%	10%	12%	15%	17%	
Mexico	22%	20%	19%	19%	24%	22%	27%	24%	21%	23%	23%	24%	20%	23%	18%	22%	18%	20%	20%	13%	20%	17%	19%	17%	16%	16%	21%	17%	16%	17%	18%	16%	17%	15%	14%	
Poland	23%	20%	24%	18%	16%	18%	17%	16%	14%	15%	14%	16%	13%	16%	14%	14%	19%	16%	22%	18%	18%	16%	21%	19%	23%	21%	19%	21%	23%	22%	24%	23%	19%	17%	22%	
Romania																									12%	12%	14%	8%	10%	13%	10%	17%				
Russia	22%	19%	16%	17%	17%	20%	18%	16%	20%	22%	17%	19%	20%	20%	20%	17%	21%	17%	22%	18%	16%	22%	28%	31%	32%	25%	26%	33%	35%	30%	27%	26%	29%	22%	30%	
Saudi Arabia	64%	67%	71%	48%	47%	53%	53%	54%	59%	57%	55%	53%	57%	56%	58%	56%	57%	63%	56%	56%	58%	58%	57%	64%	67%	59%	58%	62%	60%	62%	61%	61%	56%	68%	73%	
South Africa	30%	27%	29%	26%	23%	24%	18%	18%	26%	20%	17%	21%	24%	20%	23%	20%	17%	20%	22%	25%	18%	17%	17%	15%	20%	16%	16%	22%	19%	18%	19%	15%	16%	18%	16%	
South Korea	16%	19%	14%	13%	17%	14%	14%	15%	14%	17%	15%	16%	17%	18%	13%	16%	20%	20%	18%	16%	17%	21%	14%	21%	16%	13%	16%	14%	14%	12%	13%	9%	12%	13%	10%	
Spain	4%	6%	6%	5%	7%	6%	5%	5%	5%	5%	6%	5%	7%	7%	6%	7%	8%	7%	7%	7%	6%	8%	6%	9%	11%	10%	10%	9%	9%	8%	9%	9%	10%	13%	13%	
Sweden	51%	54%	48%	55%	44%	52%	51%	47%	52%	51%	53%	49%	53%	48%	56%	53%	50%	54%	52%	49%	55%	51%	60%	49%	51%	53%	56%	51%	59%	48%	47%	53%	54%	59%	53%	
Turkey	40%	40%	38%	37%	35%	32%	36%	35%	35%	34%	37%	40%	36%	36%	38%	35%	35%	37%	38%	37%	31%	31%	30%	37%	35%	36%	33%	39%	33%	36%	35%	27%	30%	29%	38%	
United States	23%	22%	28%	28%	23%	23%	22%	25%	22%	28%	23%	27%	28%	28%	29%	29%	28%	25%	26%	27%	29%	25%	25%	28%	27%	28%	29%	30%	30%	33%	35%	34%	40%	38%	40%	

Rate the current state of the economy in your local area using a scale from 1 to 7, where 7 means a very strong economy today and 1 means a very weak economy.

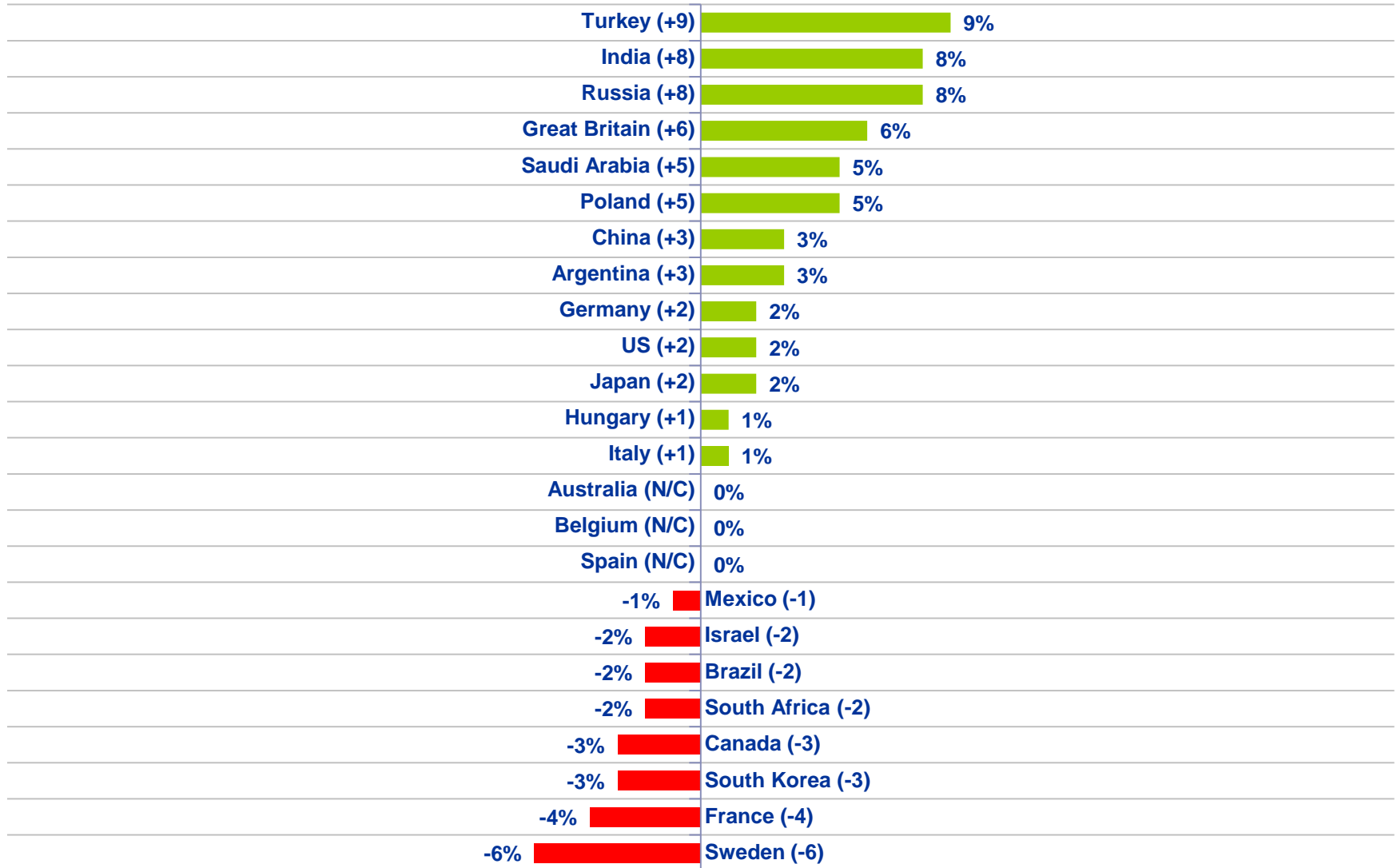
Countries Ranked and Marked By Change In Assessment From Last Month (Left Column):

Rate the current state of the economy in your local area using a scale from 1 to 7, where 7 means a very strong economy today and 1 means a very weak economy...

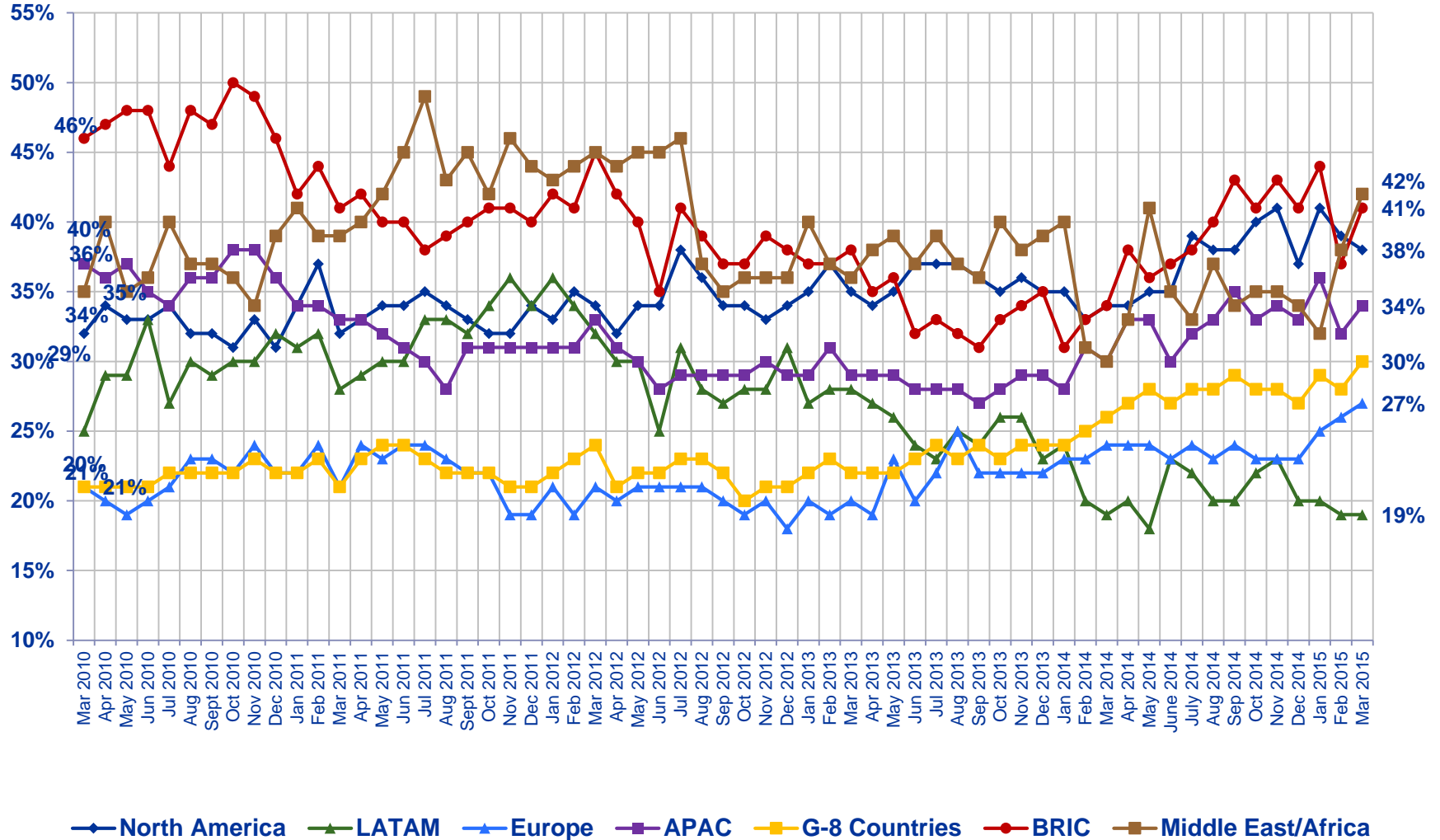


Countries Ranked by Net Improvement, Decline or No Change Compared to Last Month:

Rate the current state of the economy in your local area using a scale from 1 to 7, where 7 means a very strong economy today and 1 means a very weak economy...

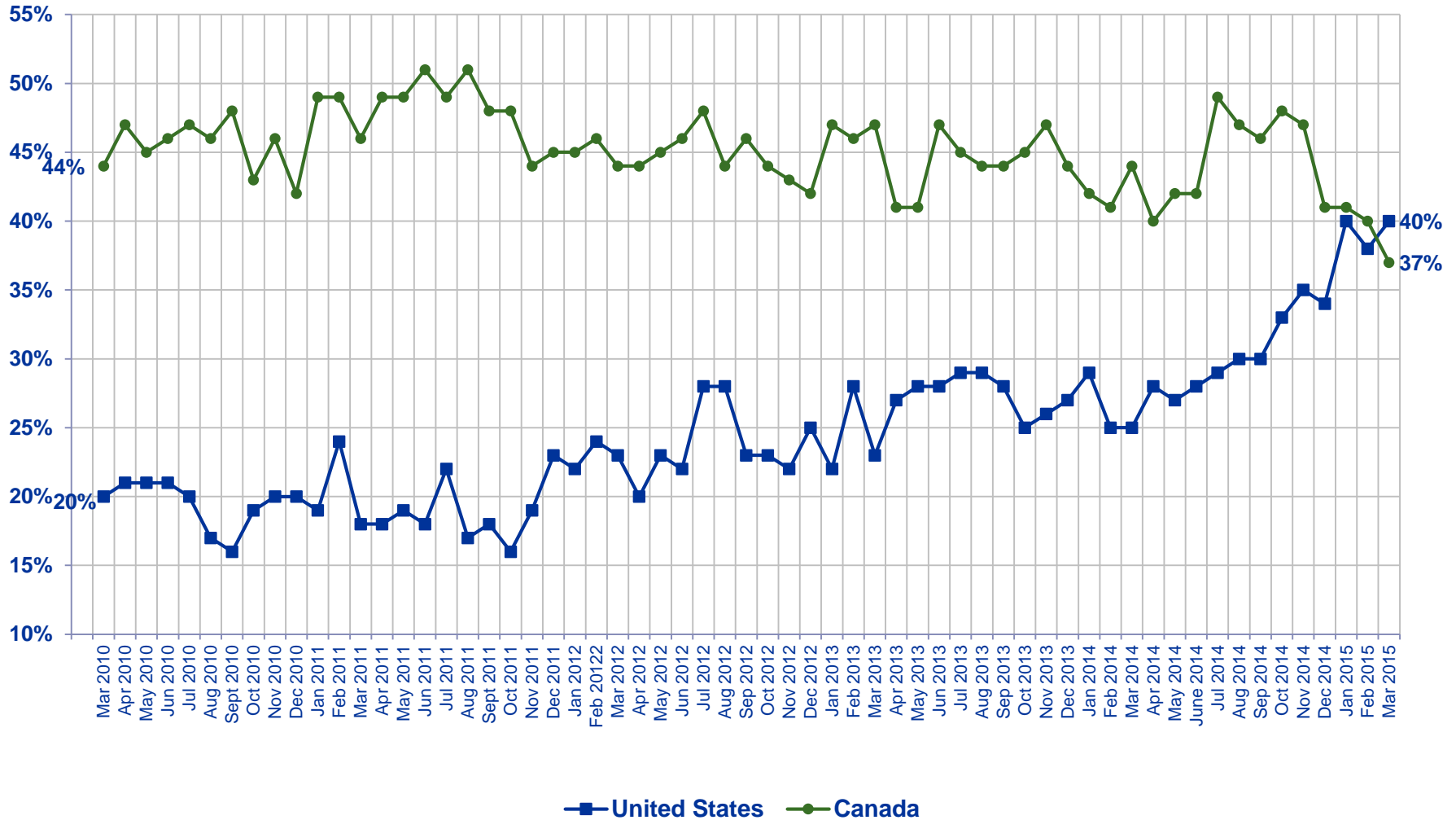


% Strong (Top 3 5-6-7)



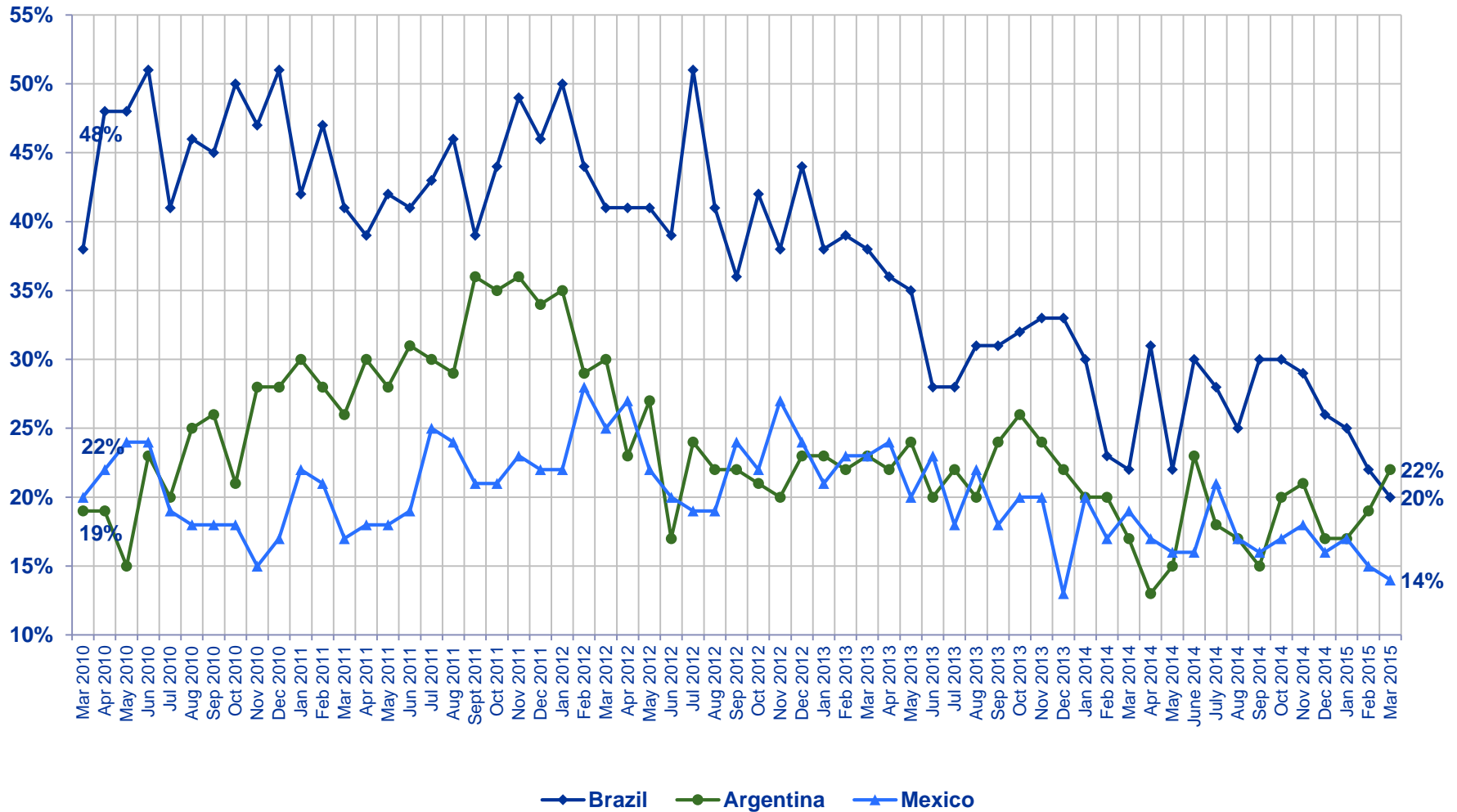
Rate the current state of the economy in your local area using a scale from 1 to 7, where 7 means a very strong economy today and 1 means a very weak economy.

% Strong (Top 3 5-6-7)



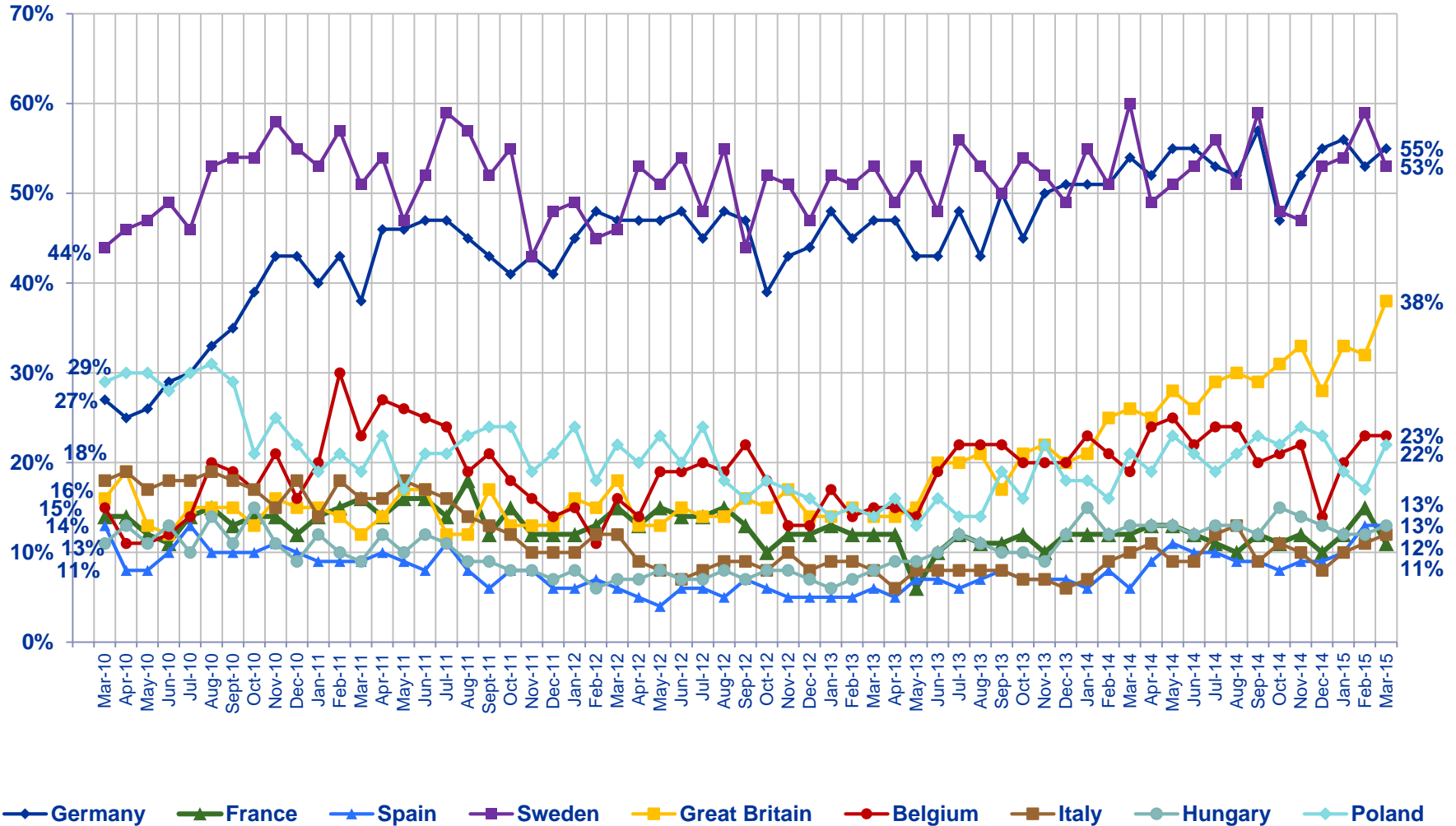
Rate the current state of the economy in your local area using a scale from 1 to 7, where 7 means a very strong economy today and 1 means a very weak economy.

% Strong (Top 3 5-6-7)



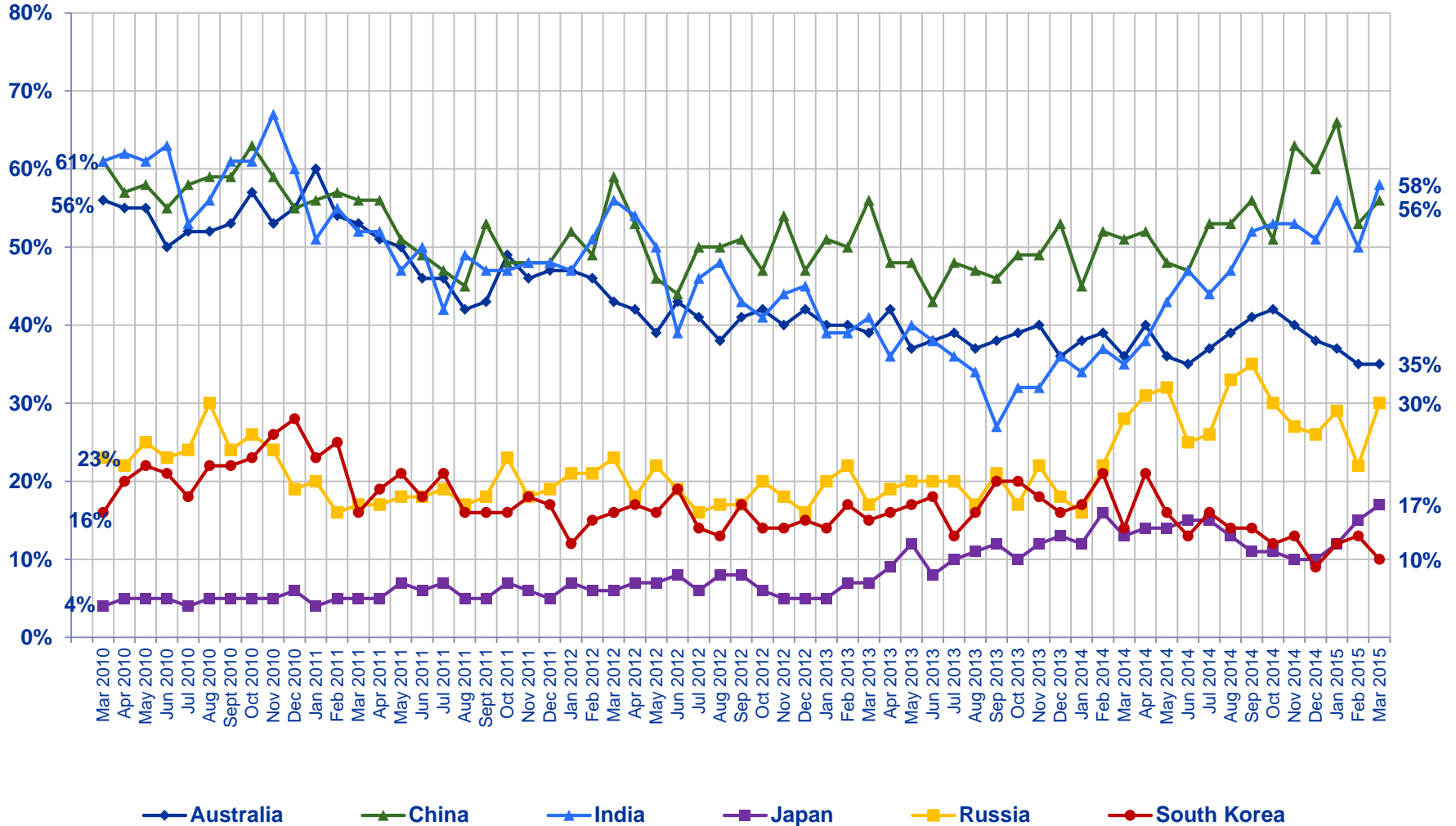
Rate the current state of the economy in your local area using a scale from 1 to 7, where 7 means a very strong economy today and 1 means a very weak economy.

% Strong (Top 3 5-6-7)



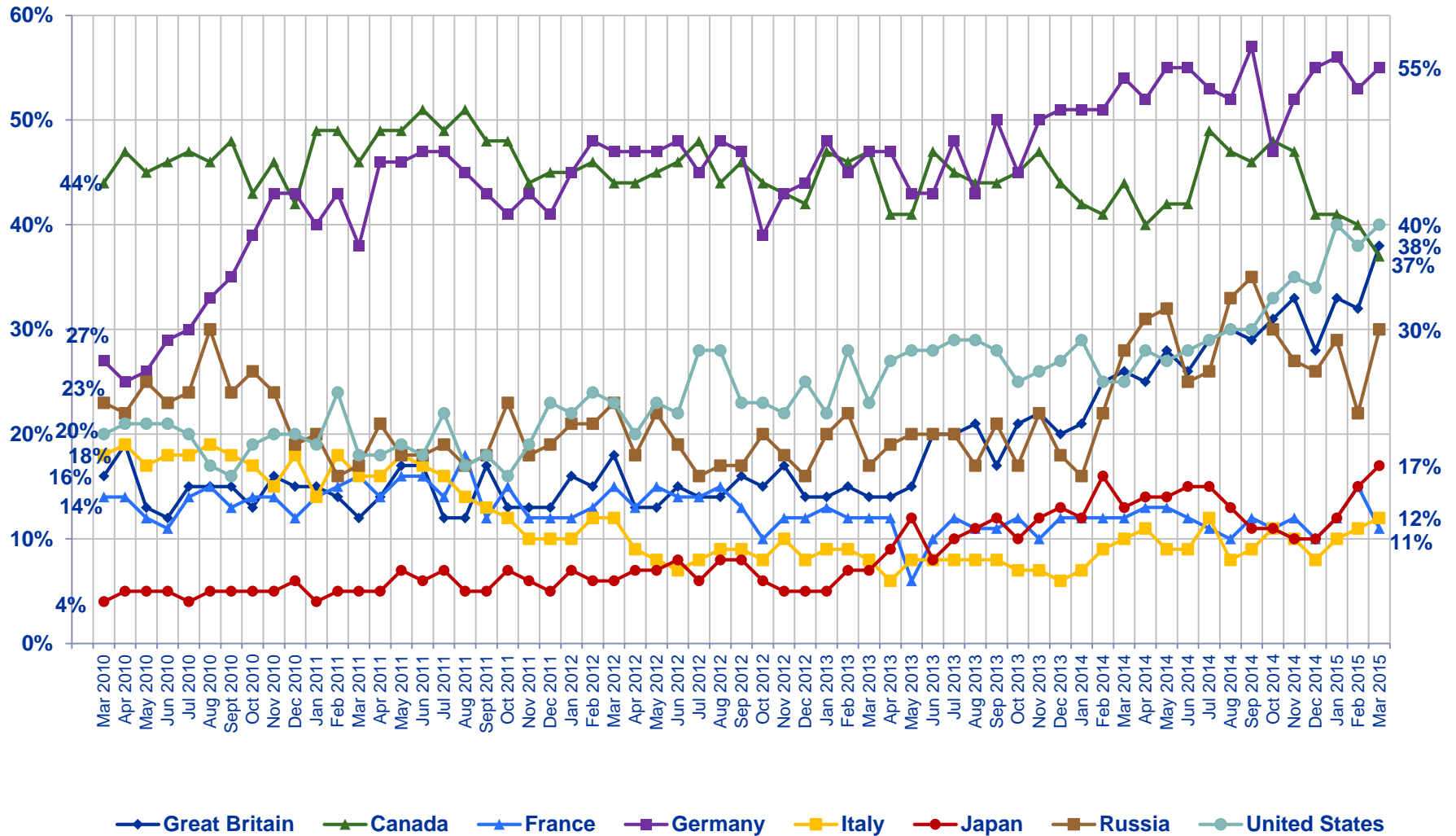
Rate the current state of the economy in your local area using a scale from 1 to 7, where 7 means a very strong economy today and 1 means a very weak economy.

% Strong (Top 3 5-6-7)



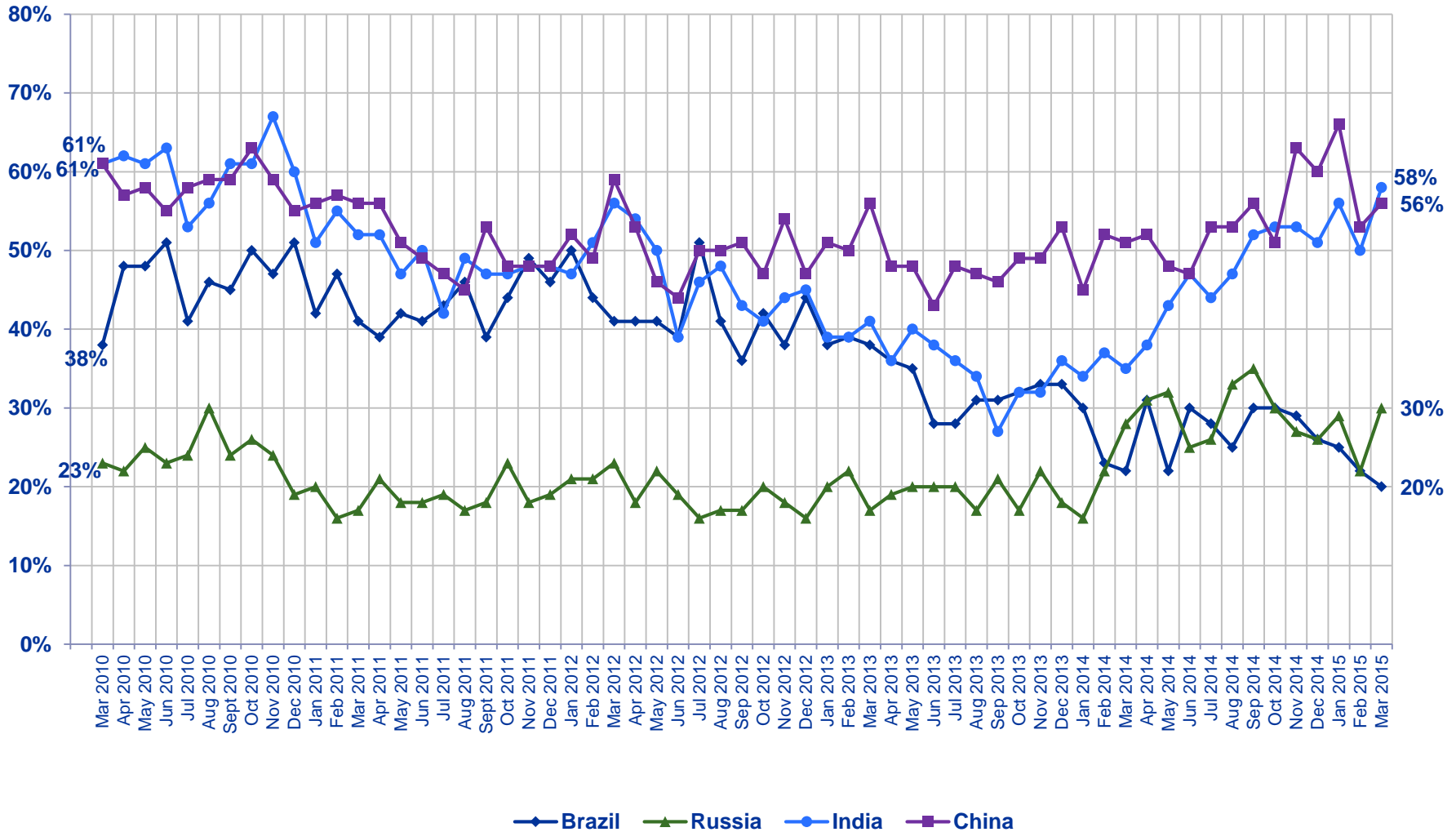
Rate the current state of the economy in your local area using a scale from 1 to 7, where 7 means a very strong economy today and 1 means a very weak economy.

% Strong (Top 3 5-6-7)

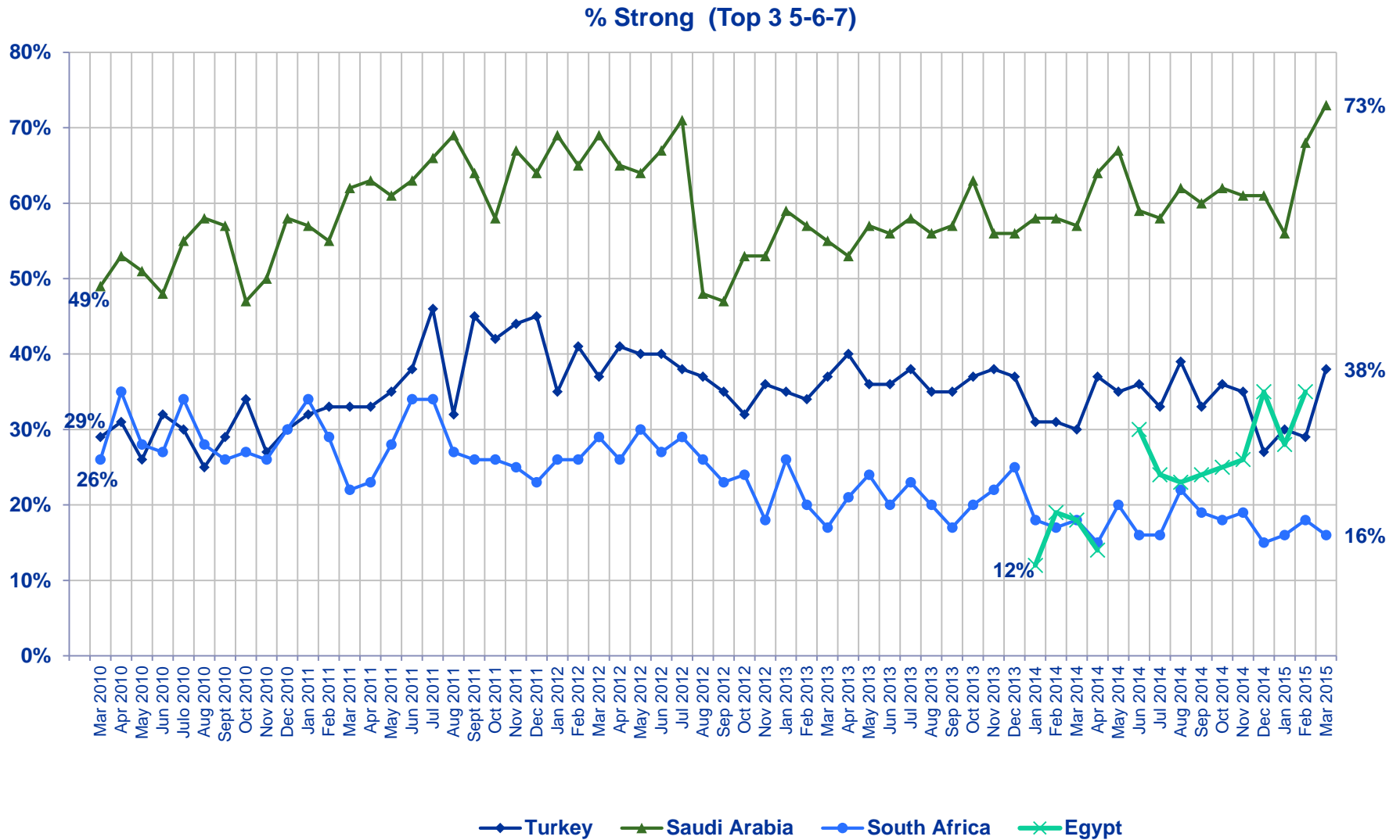


Rate the current state of the economy in your local area using a scale from 1 to 7, where 7 means a very strong economy today and 1 means a very weak economy.

% Strong (Top 3 5-6-7)



Rate the current state of the economy in your local area using a scale from 1 to 7, where 7 means a very strong economy today and 1 means a very weak economy.



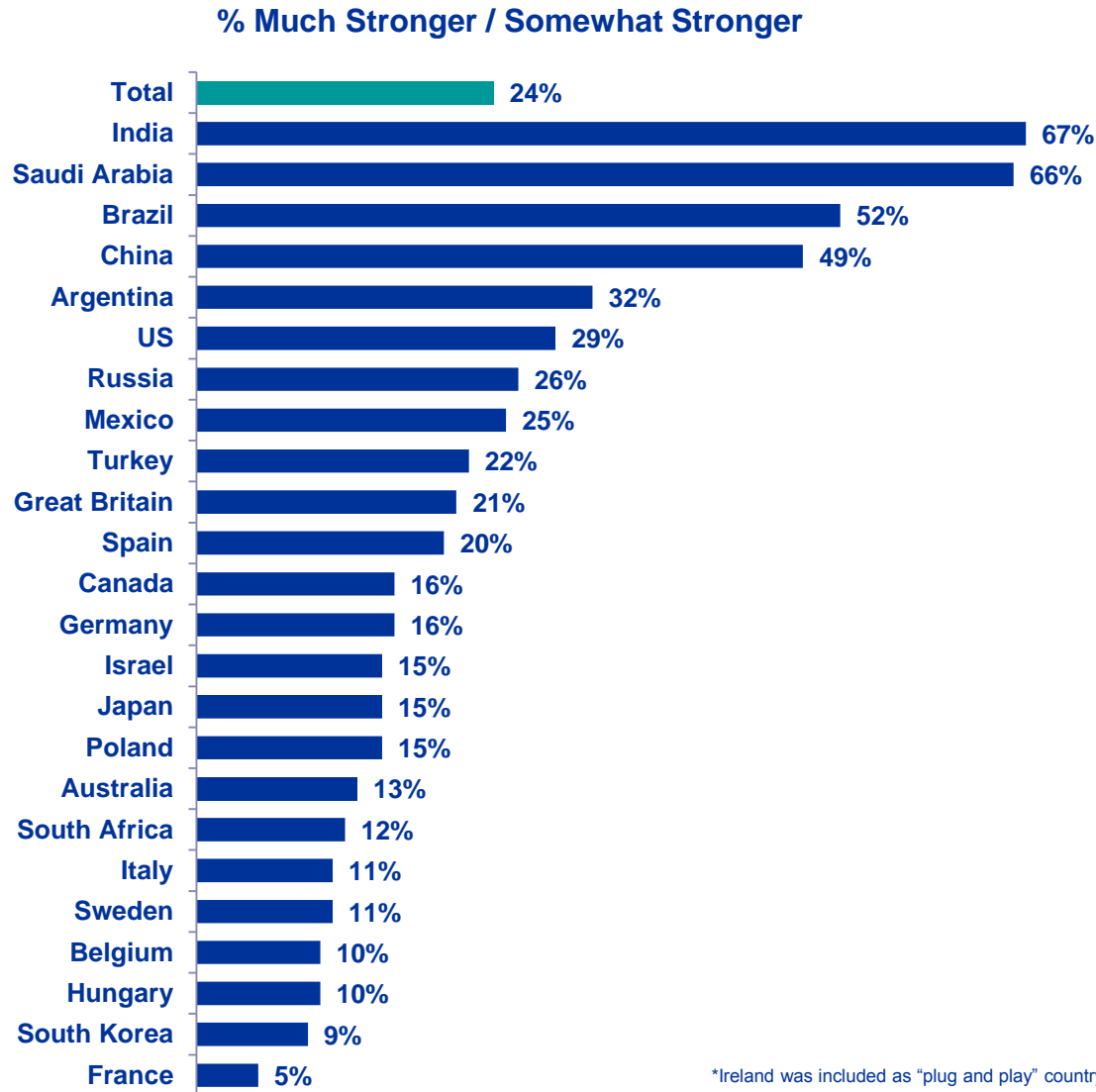
Rate the current state of the economy in your local area using a scale from 1 to 7, where 7 means a very strong economy today and 1 means a very weak economy.

③ Assessing the Strength of The Local Economy...

...Six Months From Now



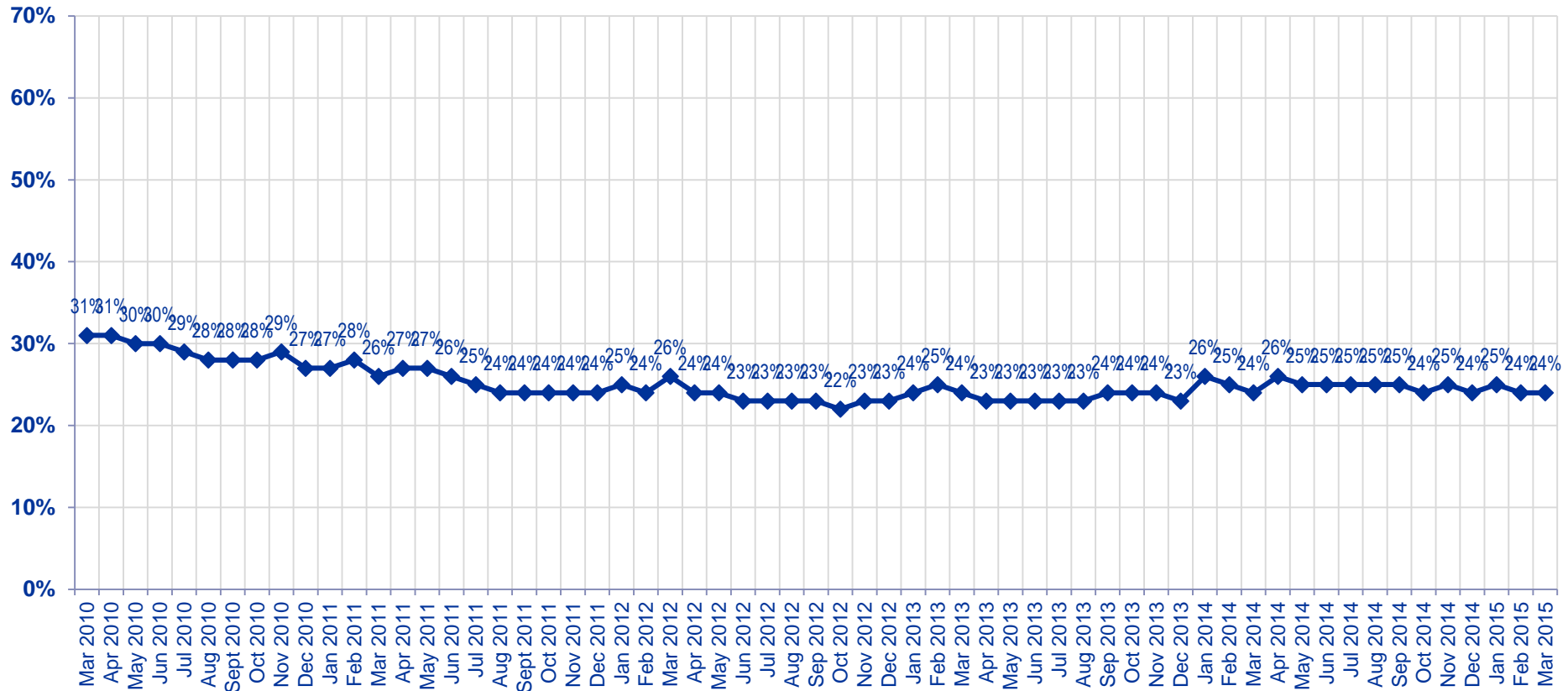
Citizen Consumers Who Say The Economy in the Local Area to be Stronger in The Next Six Months...



*Ireland was included as "plug and play" country this month and is not reflected in the aggregate.

Looking ahead 6 months from now, do you expect the economy in your local area to be much stronger, somewhat stronger, about the same, somewhat weaker, or much weaker than it is now?

Global Total
% Much Stronger / Somewhat Stronger



Looking ahead six months from now, do you expect the economy in your local area to be much stronger, somewhat stronger, about the same, somewhat weaker, or much weaker than it is now?



Citizen Consumers Who Say The Economy in the Local Area to be Stronger in The Next Six Months...

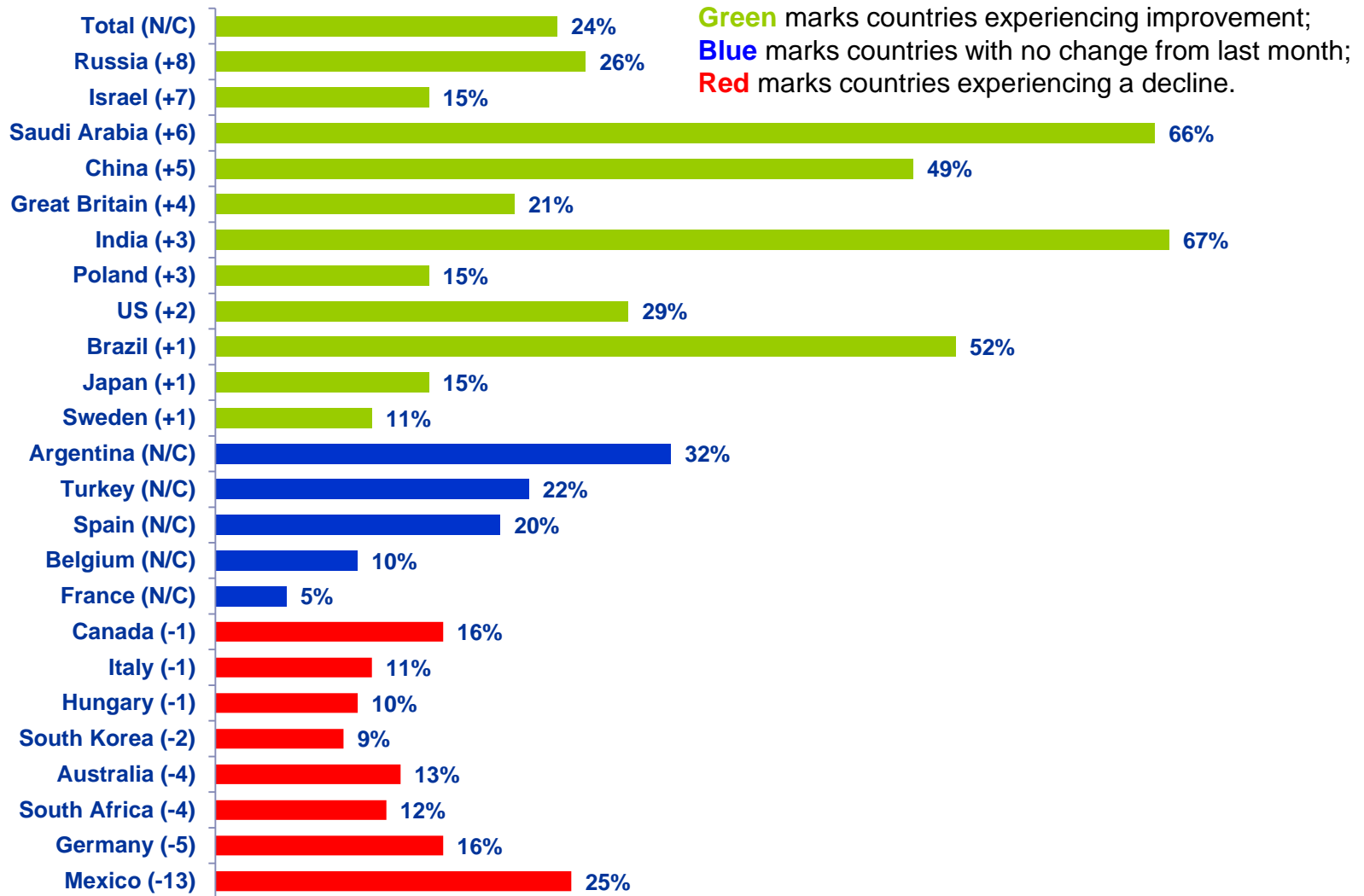
% Much Stronger/Somewhat Stronger

	May '12	Jun '12	Jul '12	Aug '12	Sep '12	Oct '12	Nov '12	Dec '12	Jan '13	Feb '13	Mar '13	Apr '13	May '13	Jun '13	Jul '13	Aug '13	Sep '13	Oct '13	Nov '13	Dec '13	Jan '14	Feb '14	Mar '14	Apr '14	May '14	Jun '14	Jul '14	Aug '14	Sep '14	Oct '14	Nov '14	Dec '14	Jan '15	Feb '15	Mar '15	
Total	24%	23%	23%	23%	23%	22%	23%	23%	24%	25%	24%	23%	23%	23%	23%	24%	24%	24%	23%	26%	25%	24%	26%	25%	25%	25%	25%	24%	25%	24%	25%	24%	25%	24%	24%	
Argentina	44%	38%	39%	40%	41%	40%	40%	42%	41%	39%	38%	38%	36%	41%	37%	41%	39%	37%	41%	37%	39%	37%	33%	31%	31%	31%	33%	35%	31%	31%	34%	27%	33%	32%	32%	
Australia	14%	16%	15%	16%	16%	17%	18%	18%	12%	17%	15%	14%	14%	14%	15%	19%	29%	21%	20%	18%	15%	16%	16%	17%	16%	13%	13%	15%	19%	18%	17%	18%	15%	17%	13%	
Belgium	8%	8%	8%	8%	10%	8%	6%	5%	9%	4%	7%	6%	6%	5%	7%	16%	12%	12%	9%	10%	14%	11%	8%	8%	16%	9%	11%	10%	11%	10%	11%	6%	12%	10%	10%	
Brazil	67%	69%	66%	65%	70%	74%	73%	73%	72%	69%	70%	68%	64%	59%	60%	64%	63%	62%	62%	61%	68%	64%	58%	58%	56%	57%	62%	57%	57%	64%	58%	57%	55%	51%	52%	
Canada	21%	18%	19%	17%	18%	21%	15%	18%	17%	18%	18%	16%	15%	17%	17%	19%	17%	16%	20%	16%	18%	18%	19%	18%	14%	18%	16%	18%	14%	18%	19%	18%	17%	16%		
China	39%	34%	38%	36%	32%	35%	45%	35%	43%	45%	46%	38%	39%	38%	39%	35%	35%	39%	40%	44%	40%	40%	36%	41%	39%	37%	36%	42%	41%	37%	53%	46%	51%	44%	49%	
Egypt																					61%	49%	33%	41%		67%	50%	54%	52%	50%	46%	55%	50%	44%		
France	9%	6%	5%	4%	4%	3%	4%	3%	3%	2%	3%	3%	3%	3%	4%	5%	5%	6%	3%	5%	6%	4%	5%	7%	6%	4%	3%	3%	2%	4%	4%	4%	4%	5%	5%	
Germany	20%	14%	13%	16%	14%	11%	13%	15%	15%	22%	18%	18%	14%	15%	15%	17%	19%	16%	20%	21%	19%	19%	18%	21%	20%	17%	19%	16%	18%	14%	15%	14%	17%	21%	16%	
Great Britain	9%	9%	9%	9%	9%	10%	12%	8%	7%	10%	9%	9%	12%	12%	17%	17%	15%	18%	20%	17%	20%	24%	21%	21%	21%	18%	19%	21%	20%	18%	19%	18%	19%	17%	21%	
Hungary	7%	6%	7%	6%	5%	7%	6%	5%	8%	9%	8%	9%	8%	10%	8%	11%	11%	10%	11%	14%	17%	13%	12%	14%	14%	10%	11%	11%	13%	16%	11%	9%	8%	11%	10%	
India	54%	50%	53%	53%	48%	44%	50%	53%	46%	45%	47%	45%	46%	45%	43%	40%	41%	42%	43%	46%	51%	48%	50%	53%	60%	70%	62%	61%	71%	69%	71%	65%	62%	64%	67%	
Israel																																			8%	15%
Italy	12%	10%	12%	12%	13%	9%	11%	11%	14%	17%	14%	12%	15%	12%	13%	14%	14%	13%	9%	13%	14%	13%	15%	13%	16%	15%	15%	12%	10%	10%	9%	8%	14%	12%	11%	
Japan	7%	7%	8%	7%	7%	5%	8%	8%	18%	20%	24%	23%	28%	15%	18%	15%	18%	18%	15%	15%	19%	18%	15%	13%	14%	13%	15%	12%	12%	10%	10%	12%	13%	14%	15%	
Mexico	39%	39%	37%	41%	43%	40%	40%	38%	47%	40%	38%	38%	39%	40%	34%	33%	35%	32%	33%	27%	34%	34%	29%	31%	31%	31%	34%	26%	30%	32%	31%	30%	33%	38%	25%	
Poland	16%	15%	13%	11%	8%	10%	12%	11%	9%	11%	12%	13%	10%	12%	12%	13%	11%	16%	13%	12%	17%	14%	14%	14%	17%	15%	17%	15%	15%	17%	18%	18%	13%	12%	15%	
Romania																									17%	16%	17%	13%	12%	12%	23%	26%				
Russia	18%	14%	11%	13%	17%	14%	15%	15%	14%	14%	15%	16%	16%	14%	13%	13%	14%	15%	15%	15%	14%	17%	19%	26%	26%	24%	17%	34%	27%	27%	19%	20%	26%	18%	26%	
Saudi Arabia	57%	52%	59%	47%	46%	44%	47%	48%	53%	56%	53%	51%	51%	51%	52%	51%	51%	48%	49%	51%	52%	49%	49%	59%	53%	56%	54%	55%	52%	48%	50%	51%	47%	60%	66%	
South Africa	15%	13%	20%	22%	11%	14%	10%	14%	15%	13%	10%	13%	14%	16%	12%	13%	11%	15%	14%	16%	12%	13%	15%	11%	13%	15%	18%	16%	18%	15%	20%	16%	15%	16%	12%	
South Korea	15%	14%	13%	15%	16%	13%	12%	15%	19%	14%	17%	14%	15%	17%	14%	17%	15%	18%	13%	13%	14%	15%	14%	18%	13%	10%	11%	12%	11%	10%	11%	9%	10%	11%	9%	
Spain	14%	18%	13%	12%	12%	11%	11%	9%	14%	15%	15%	12%	16%	15%	15%	17%	21%	15%	19%	19%	18%	18%	19%	18%	19%	17%	19%	18%	20%	13%	17%	16%	20%	20%	20%	
Sweden	10%	15%	10%	14%	16%	19%	12%	10%	9%	12%	15%	13%	10%	12%	9%	13%	13%	15%	11%	10%	13%	13%	15%	13%	20%	12%	12%	14%	13%	16%	16%	14%	11%	10%	11%	
Turkey	25%	30%	29%	26%	27%	23%	24%	26%	26%	34%	31%	25%	27%	27%	27%	25%	26%	28%	26%	26%	24%	26%	26%	27%	25%	27%	24%	29%	22%	23%	25%	22%	26%	22%	22%	
United States	25%	24%	28%	28%	30%	25%	29%	24%	24%	25%	23%	24%	25%	23%	26%	26%	23%	22%	22%	23%	25%	21%	19%	23%	23%	21%	22%	23%	21%	27%	26%	26%	29%	27%	29%	

Looking ahead six months from now, do you expect the economy in your local area to be much stronger, somewhat stronger, about the same, somewhat weaker, or much weaker than it is now?

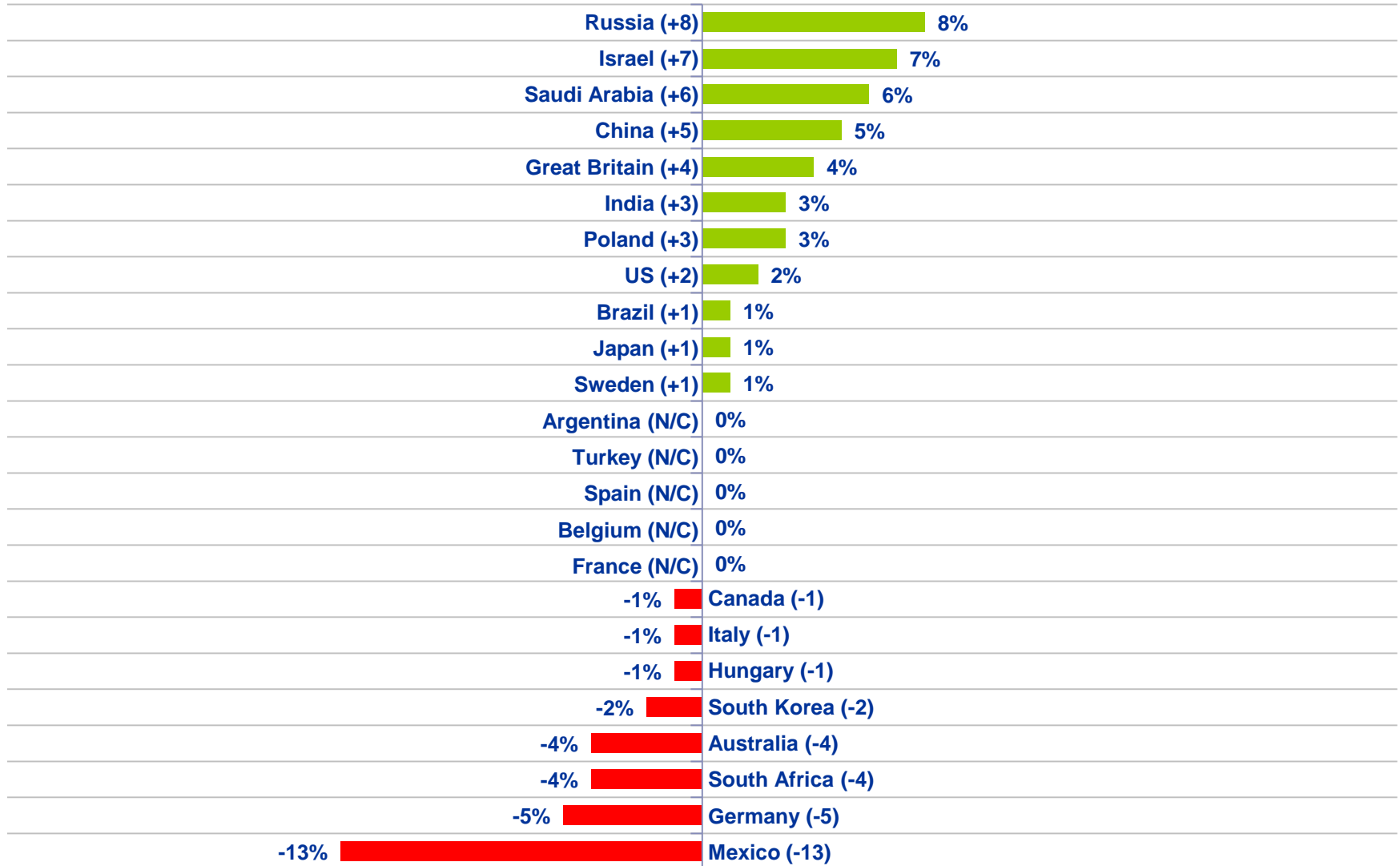
Countries Ranked and Marked By Change In Assessment From Last Month (Left Column):

Looking ahead six months from now, do you expect the economy in your local area to be much stronger, somewhat stronger, about the same, somewhat weaker, or much weaker than it is now?



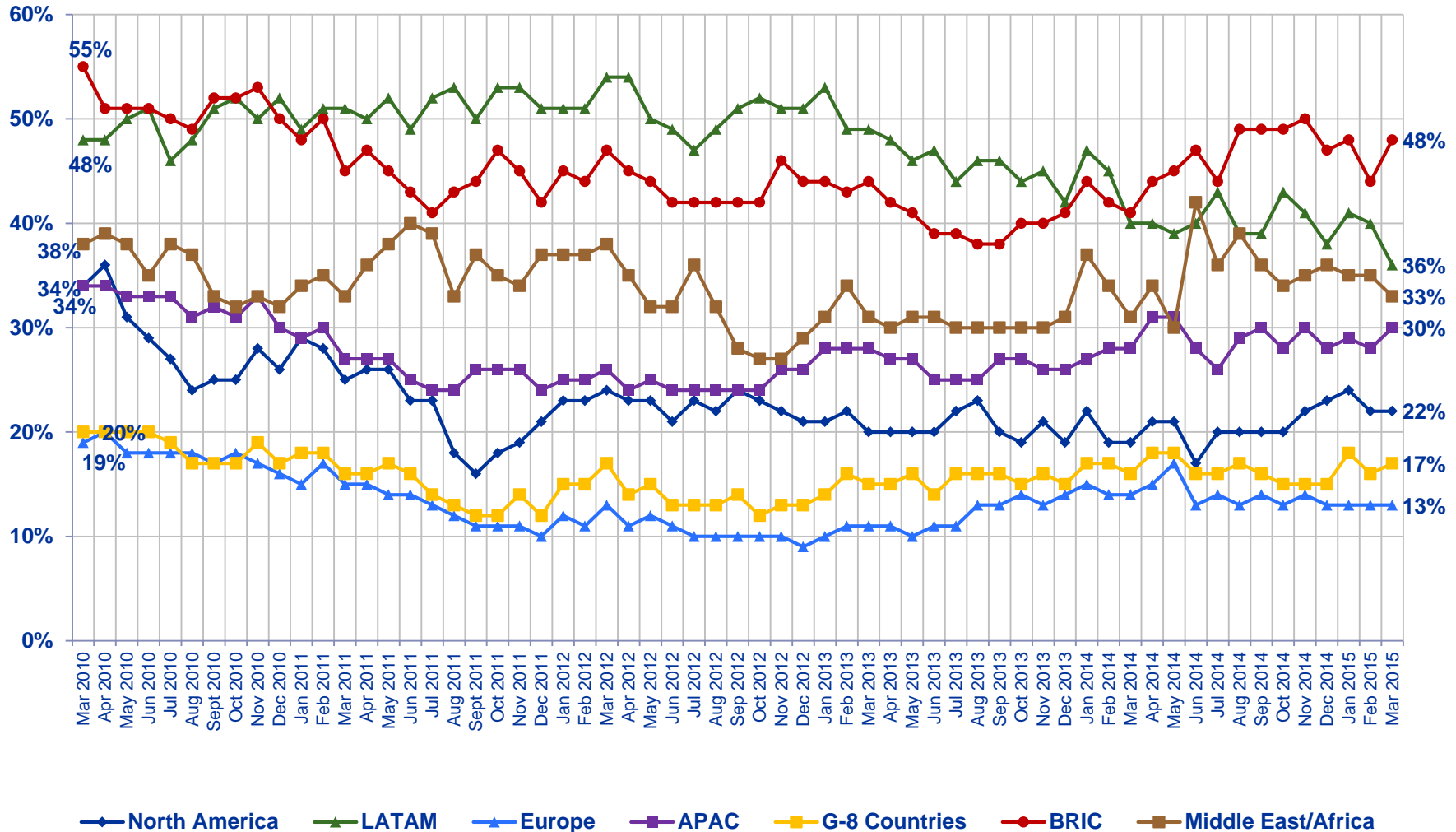
Countries Ranked by Net Improvement, Decline or No Change Compared to Last Month:

Looking ahead six months from now, do you expect the economy in your local area to be much stronger, somewhat stronger, about the same, somewhat weaker, or much weaker than it is now?



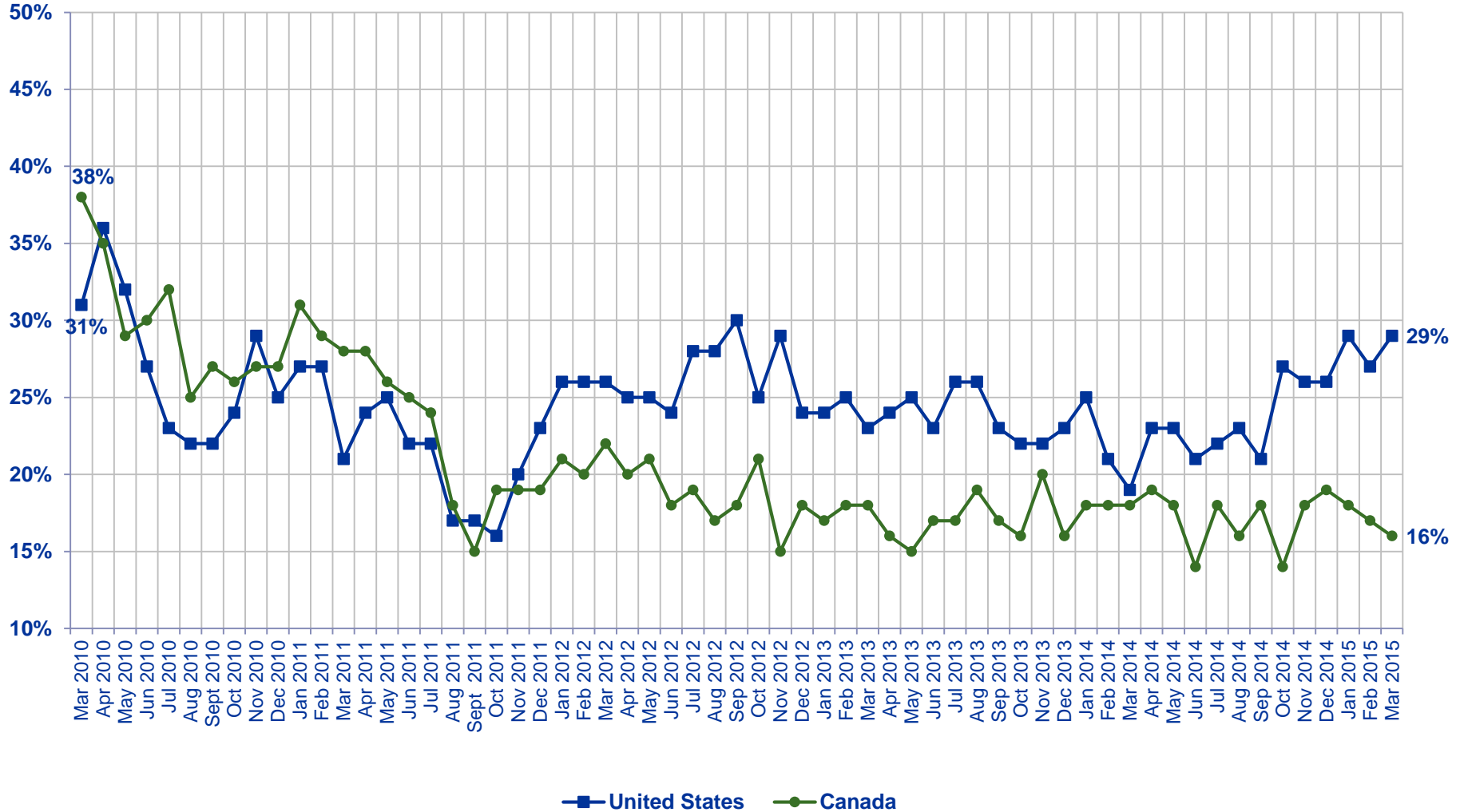
All Regions - Citizen Consumers Who Say The Economy in the Local Area to be Stronger in The Next Six Months

% Much Stronger/Somewhat Stronger



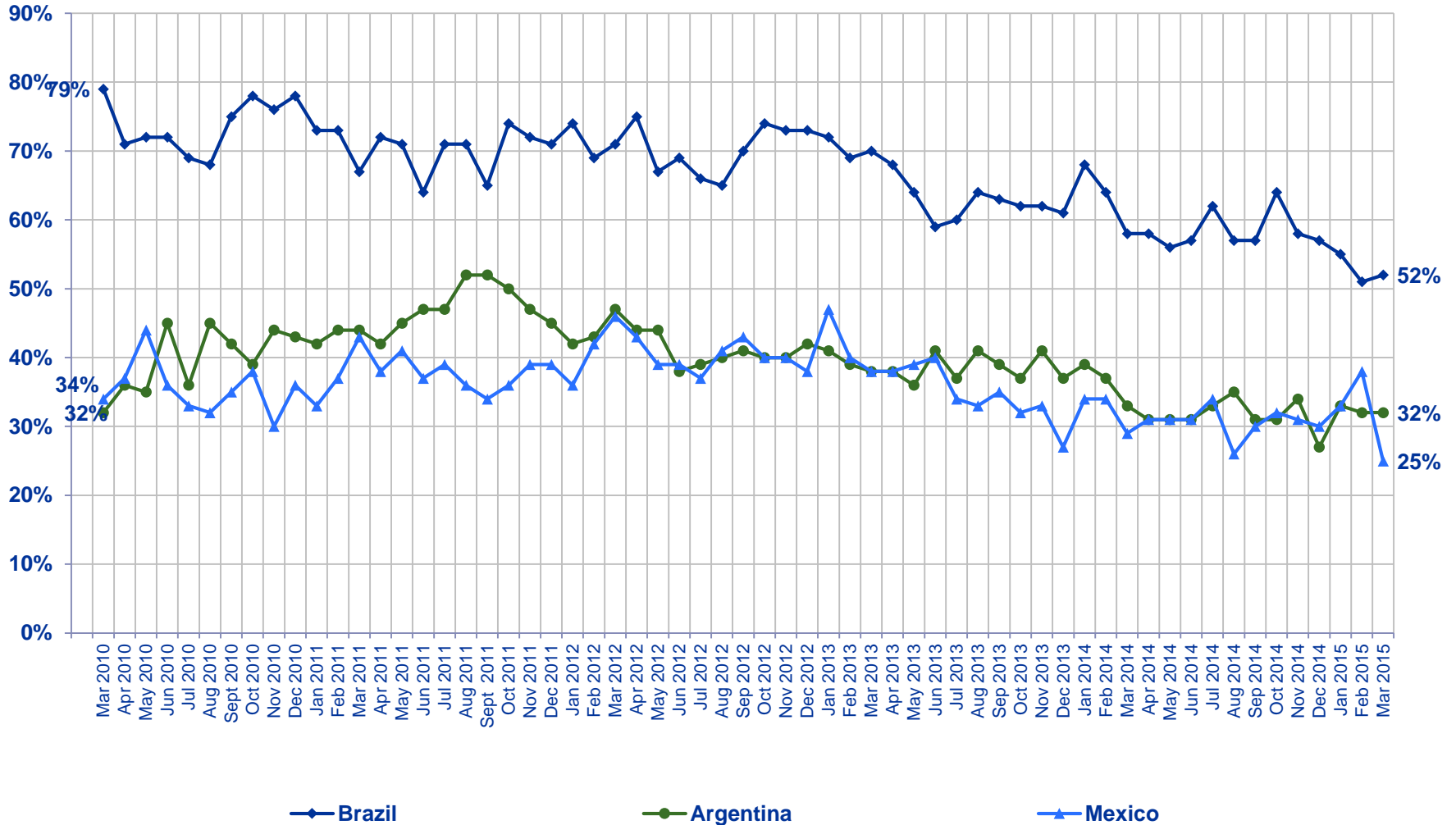
Looking ahead six months from now, do you expect the economy in your local area to be much stronger, somewhat stronger, about the same, somewhat weaker, or much weaker than it is now?

% Much Stronger/Somewhat Stronger



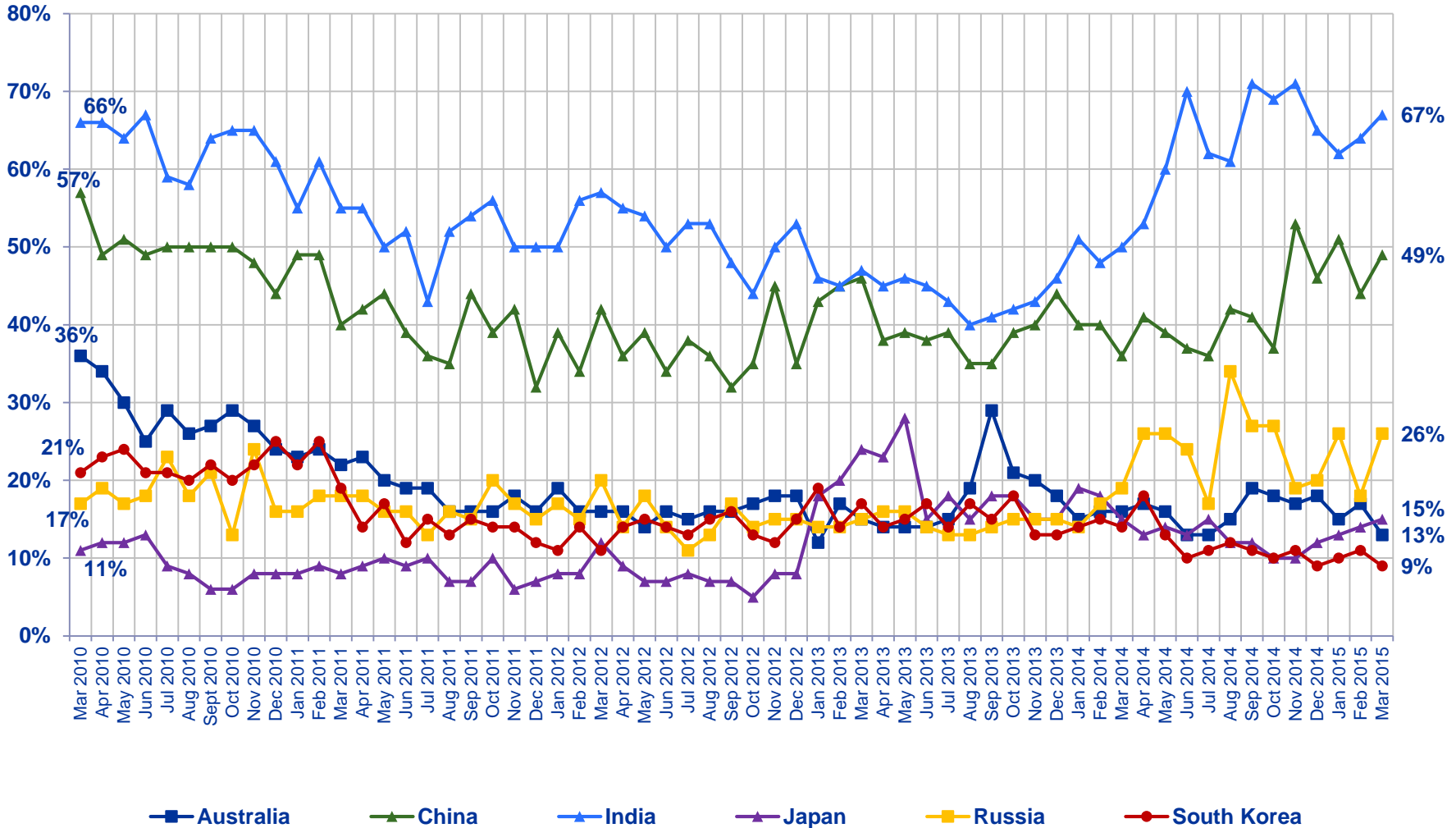
Looking ahead six months from now, do you expect the economy in your local area to be much stronger, somewhat stronger, about the same, somewhat weaker, or much weaker than it is now?

% Much Stronger/Somewhat Stronger



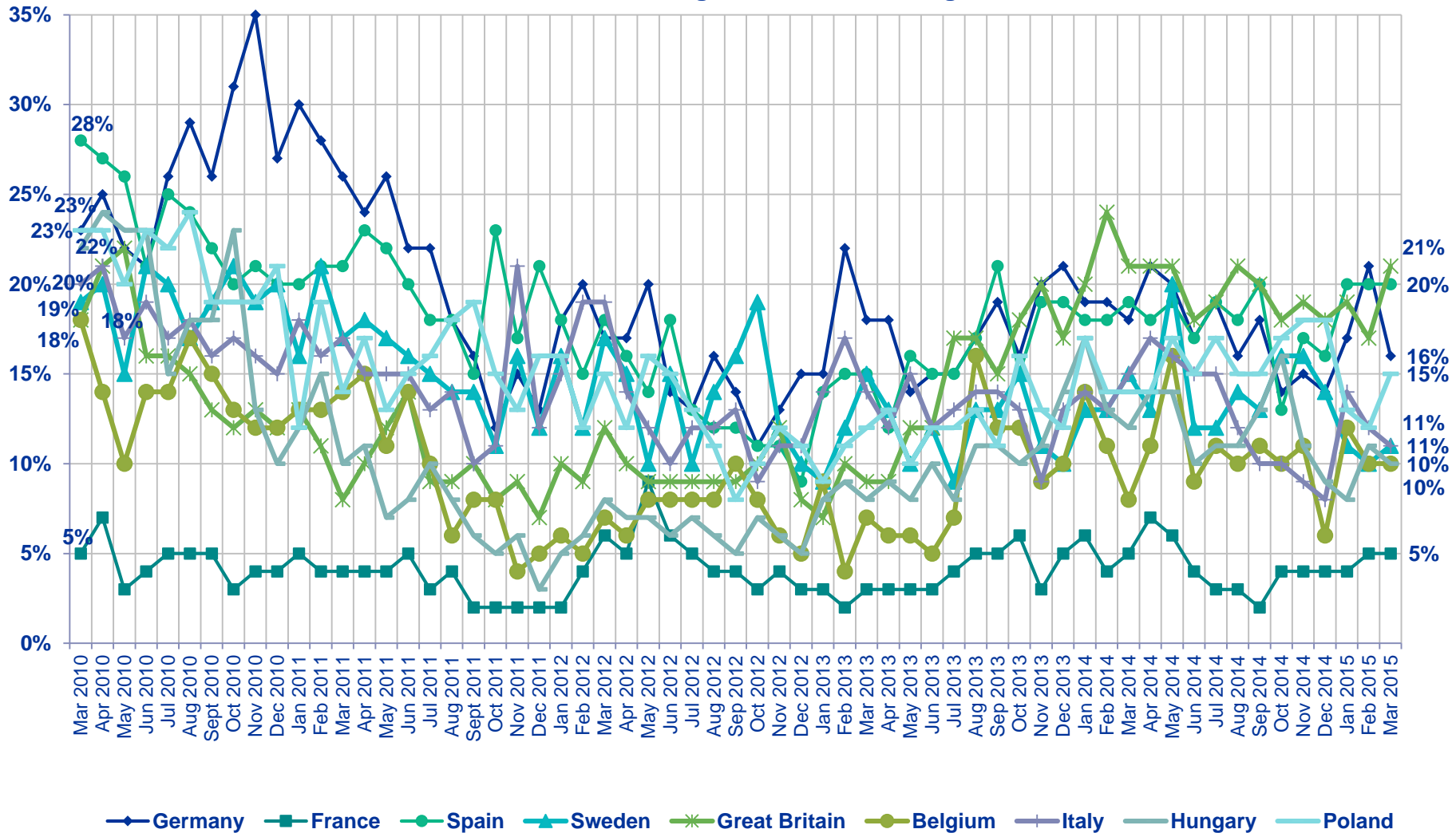
Looking ahead six months from now, do you expect the economy in your local area to be much stronger, somewhat stronger, about the same, somewhat weaker, or much weaker than it is now?

% Much Stronger/Somewhat Stronger



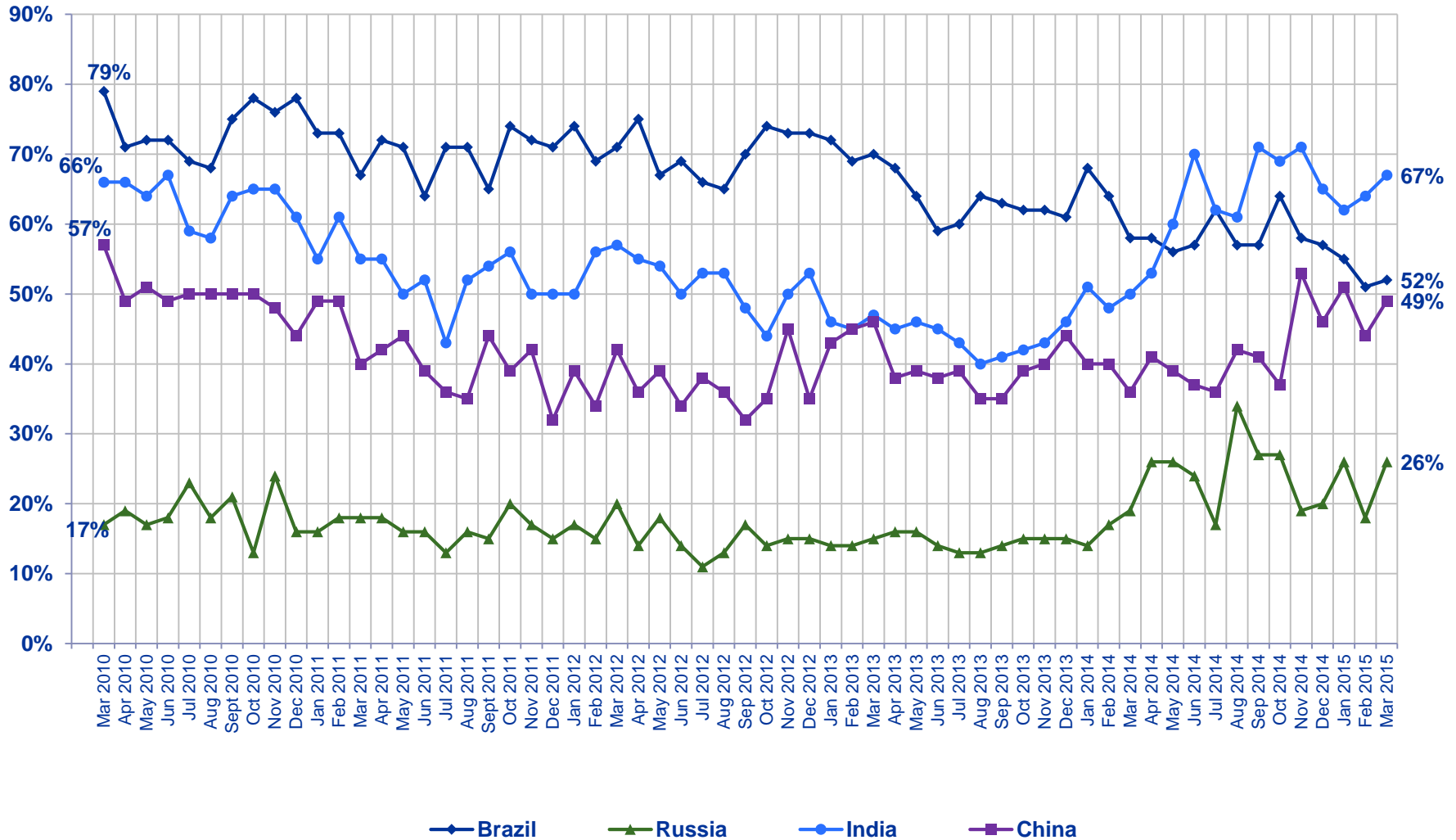
Looking ahead six months from now, do you expect the economy in your local area to be much stronger, somewhat stronger, about the same, somewhat weaker, or much weaker than it is now?

% Much Stronger/Somewhat Stronger



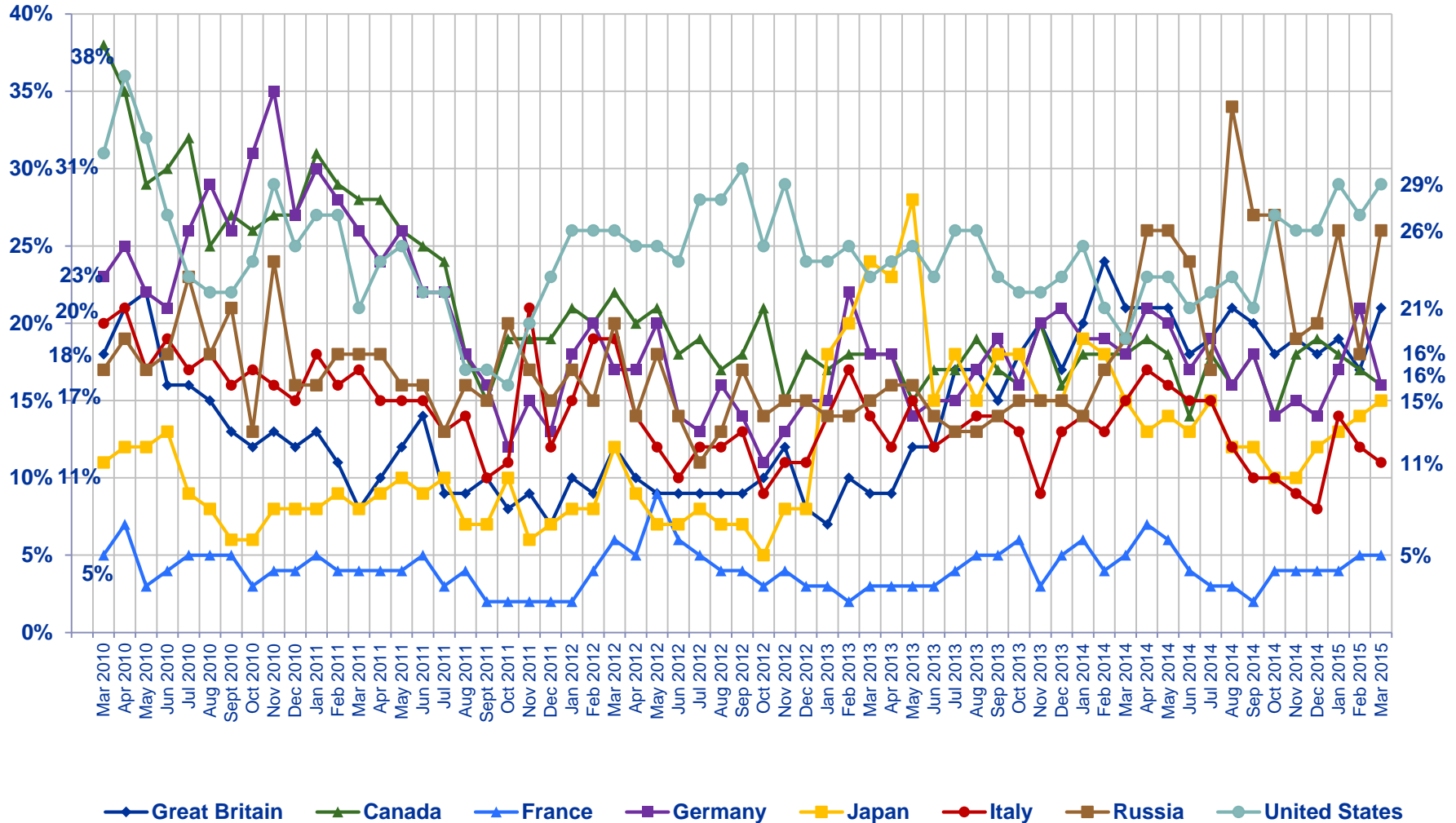
Looking ahead six months from now, do you expect the economy in your local area to be much stronger, somewhat stronger, about the same, somewhat weaker, or much weaker than it is now?

% Much Stronger/Somewhat Stronger



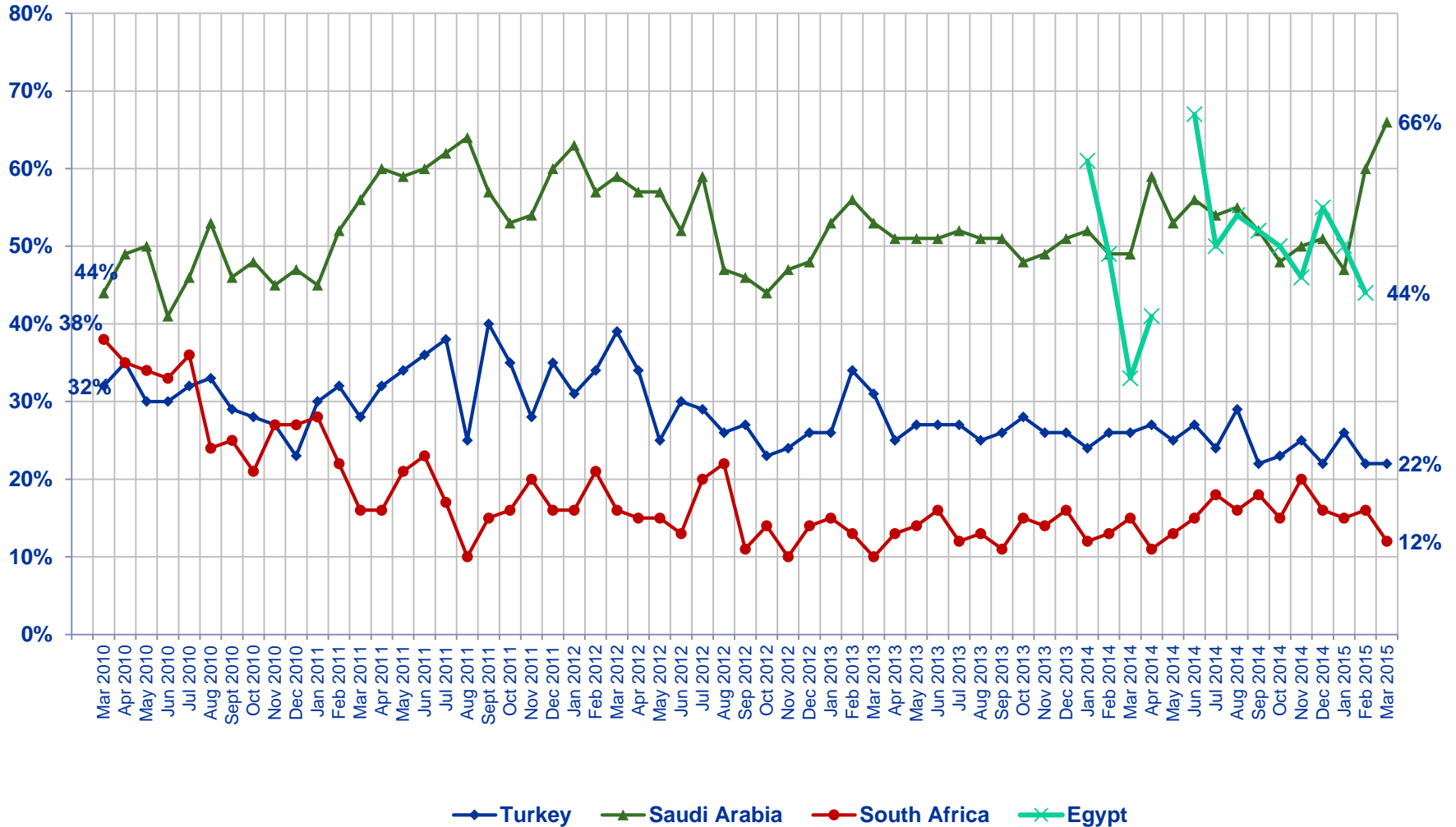
Looking ahead six months from now, do you expect the economy in your local area to be much stronger, somewhat stronger, about the same, somewhat weaker, or much weaker than it is now?

% Much Stronger/Somewhat Stronger



Looking ahead six months from now, do you expect the economy in your local area to be much stronger, somewhat stronger, about the same, somewhat weaker, or much weaker than it is now?

% Much Stronger/Somewhat Stronger



Looking ahead six months from now, do you expect the economy in your local area to be much stronger, somewhat stronger, about the same, somewhat weaker, or much weaker than it is now?



About Ipsos

- Ipsos is an independent market research company controlled and managed by research professionals. Founded in France in 1975, Ipsos has grown into a worldwide research group with a strong presence in all key markets. In October 2011 Ipsos completed the acquisition of Synovate. The combination forms the world's third largest market research company.
- With offices in 85 countries, Ipsos delivers insightful expertise across six research specializations: advertising, customer loyalty, marketing, media, public affairs research, and survey management.
- Ipsos researchers assess market potential and interpret market trends. They develop and build brands. They help clients build long-term relationships with their customers. They test advertising and study audience responses to various media and they measure public opinion around the globe.
- Ipsos has been listed on the Paris Stock Exchange since 1999 and generated global revenues of €1,789 billion (2.300 billion USD) in 2012.
- Visit www.ipsos.com to learn more about Ipsos' offerings and capabilities.



For information about this and other *Global @dvisor* products contact <http://www.ipsosglobaladvisor.com/> or:

- **John Wright**
Senior Vice President and Managing Director, Global @dvisor
Ipsos Public Affairs +1 (416) 324-2002
john.wright@ipsos.com
- **Julia Clark**
Vice President
Ipsos Public Affairs +1 (312) 526-4919
julia.clark@ipsos.com
- **Nik Samoylov**
Research Manager
Ipsos Public Affairs +1 (416) 572-4471
nik.samoylov@ipsos.com
- The Ipsos *Global @dvisor* Syndicate Study is a monthly, online survey of consumer citizens in 24 countries and produces syndicated reports and studies specifically tailored to the needs of corporations, advertising and PR agencies, and governments. For information contact:
- **Chris Deeney**
Senior Vice President and Managing Director
Ipsos Public Affairs +1 (312) 665-0551
chris.deeney@ipsos.com
- Visit www.ipsos.com for information about all of our products and services.
Copyright Ipsos 2010. All rights reserved. The contents of this publication constitute the sole and exclusive property of Ipsos.