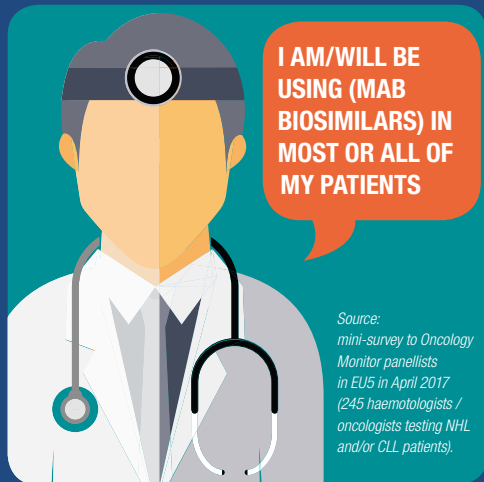


79% of UK gastroenterologists have access to biosimilars



Source: EU5 Autoimmune Biosimilar Impact Study, Q3 2016 (200 physicians reporting on 2000 UD/CD patients in EU5)

Just 3 months after their approval, 30% of cancer-treating doctors in EU5 said...

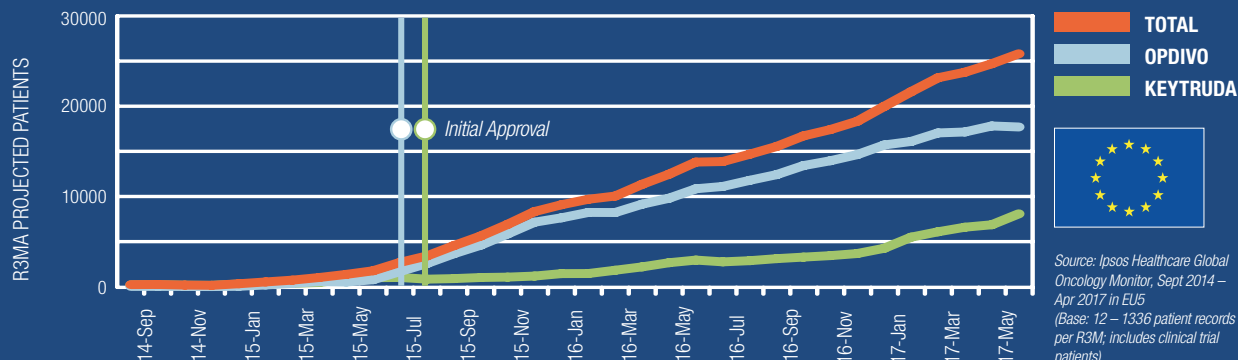


Source: mini-survey to Oncology Monitor panelists in EU5 in April 2017 (245 haematologists / oncologists testing NHL and/or CLL patients).



IPSO
REAL
WORLD
EVIDENCE

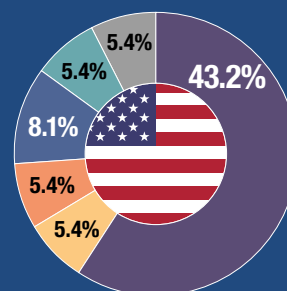
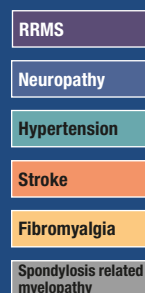
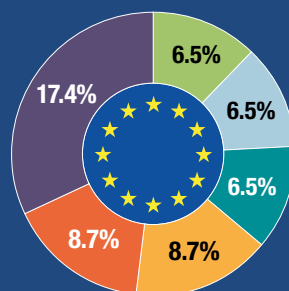
The PD-1 market continues to grow in EU5, with Opdivo so far maintaining its lead over Keytruda



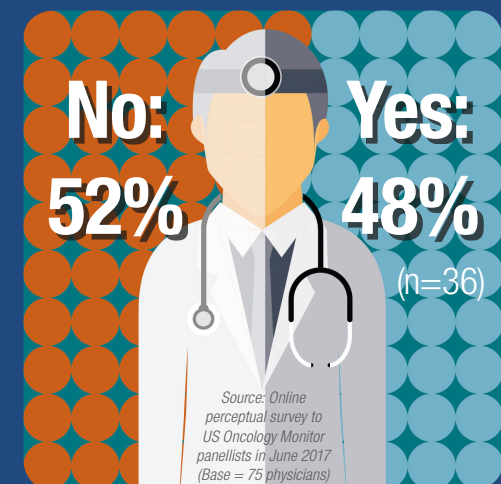
GLOBAL THERAPY MONITORS

Conditions with which misdiagnosed PPMS patients were initially diagnosed

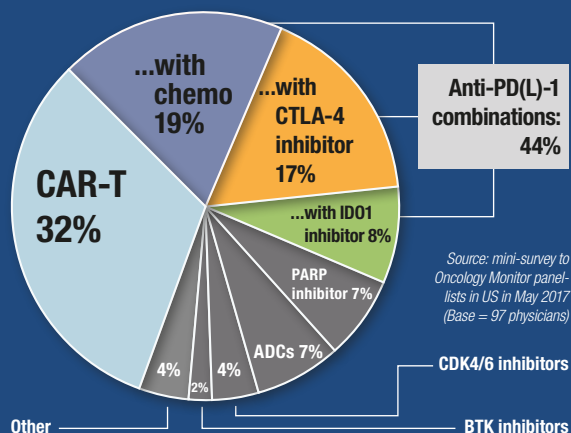
Source: Ipsos Healthcare Global Multiple Sclerosis Therapy Monitor, Q4 2016 (370 neurologists (270 EU5, 100 US) reporting on 377 PPMS patients (278 EU5, 99 US)).



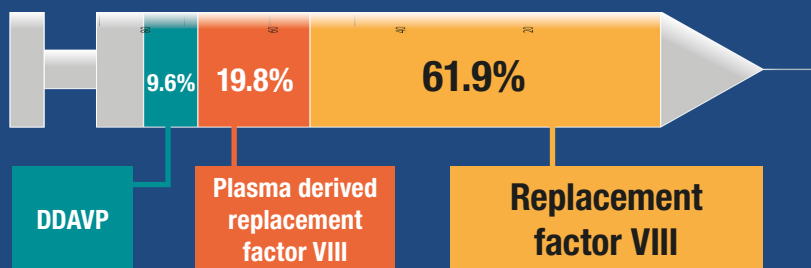
Almost half of US Oncologists test for MSI/dMMR in Breast Cancer



Conditions with which misdiagnosed PPMS patients were initially diagnosed



Top 3 drug classes used as primary therapies in Haemophilia A patients in the US



Source: US Haemophilia Therapy Monitor, Q4 2016 (40 physicians reporting on 269 patients with Haemophilia A & Haemophilia B in the US)

3 in 5 patients seen by gastroenterologists in Japan are perceived to have NASH

(59% of these are diagnosed using biopsy; ultrasonography is most commonly used for diagnosis when biopsy is not conducted.)



Source: Japan NASH Therapy Monitor, Q3 2017 (78 physicians reporting on 700 patients in Japan).

USE AS PRESCRIBED TO UNDERSTAND...

- THE UPTAKE OF YOUR BRAND
- THE SIZE OF YOUR MARKET
- DOCTORS' FUTURE INTENTIONS
- COMPETITORS' SOURCE OF BUSINESS
- COMPETITORS' USAGE PROFILE
- YOUR MARKET SEGMENTS
- AVERAGE LENGTH OF TREATMENT
- WHY DOCTORS ARE SWITCHING
- YOUR BRAND'S PENETRATION
- AND MUCH MORE ...



IPSOS
REAL
WORLD
EVIDENCE

www.ipsoshealthcare.com
e: therapymonitors@ipsos.com



26 DISEASES

ONCOLOGY • AUTOIMMUNE •
VIROLOGY & LIVER DISEASES •
DIABETES • CARDIOVASCULAR
• RESPIRATORY



40+ MARKETS

AMERICAS • EUROPE • APAC •
JAPAN • MENA



OVER 70%

OF DISEASES COVERED ARE
CURRENTLY INVESTIGATED IN
CLINICAL TRIALS



360° PERSPECTIVE

PHYSICIAN DEMOGRAPHICS •
PATIENT RECORDS • PHYSICIAN
PERCEPTIONS



17,000+ DOCTORS

 PER YEAR

26 YEARS'

 EXPERIENCE

400,000+ PATIENTS

 PER YEAR

#1 FOR FLEXIBILITY & SERVICE



SUBSCRIBED TO BY THE TOP 25 PHARMAS*

(2016-17)



Ipsos Healthcare
Inspiring Better Healthcare