

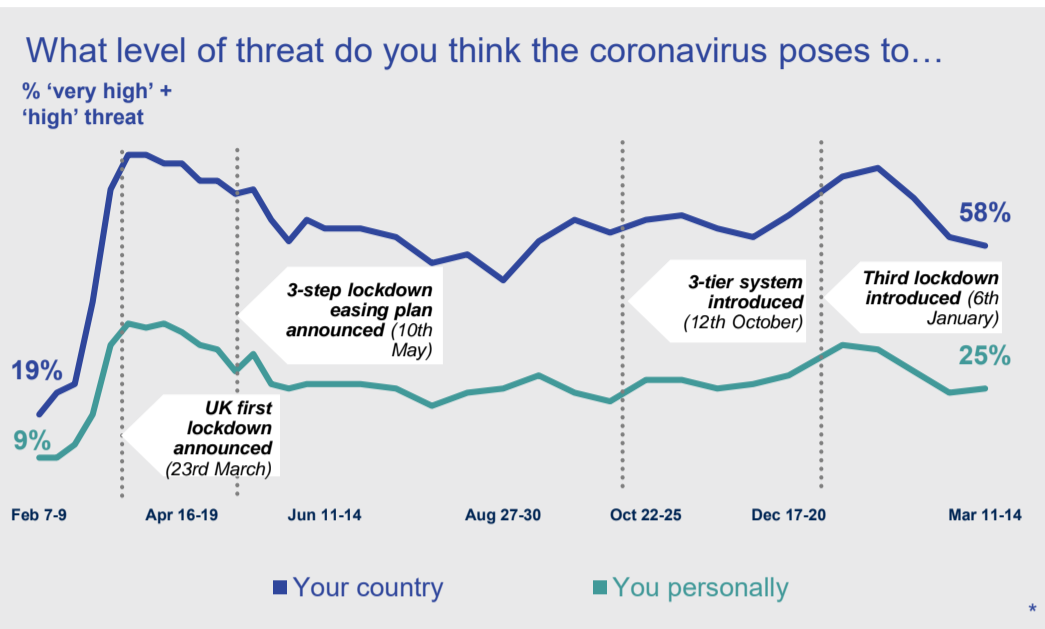
CORONAVIRUS – ONE YEAR ON TRACKING UK PUBLIC PERCEPTION

A snapshot of Ipsos MORI's research and analysis related to the COVID-19 coronavirus pandemic, one year after the first UK lockdown was announced. **25th March 2021**

For more information, visit: www.ipsos.com/ipsos-mori/en-uk/public-opinion-covid-19-coronavirus-pandemic

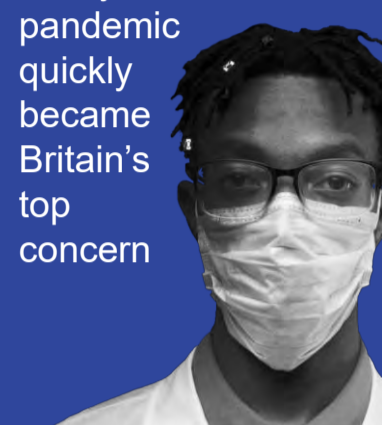
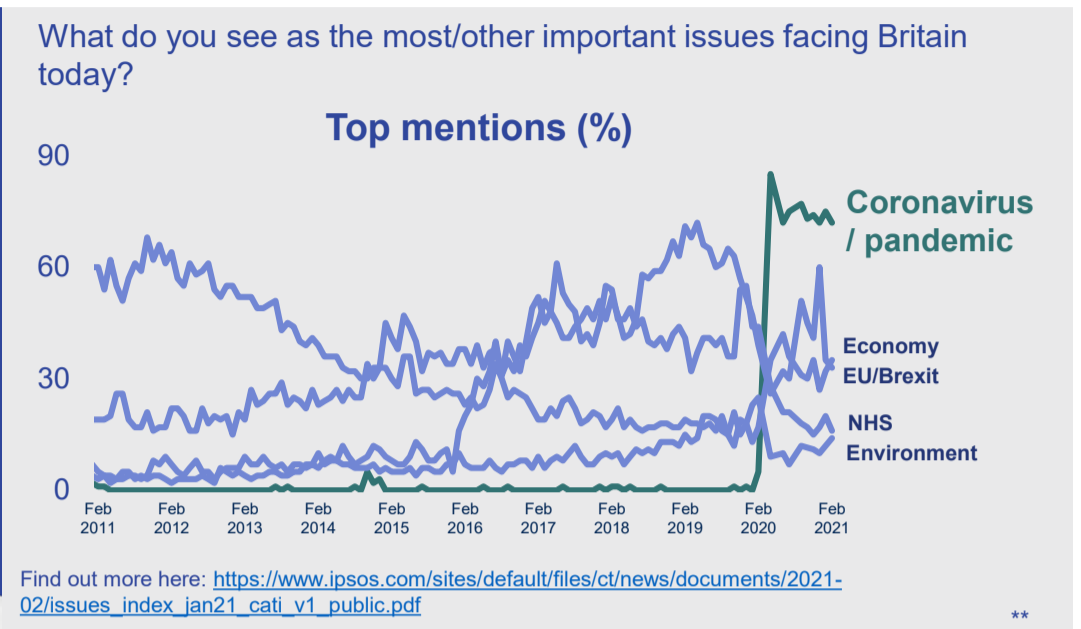
THREAT

The perceived threat of the virus has fluctuated with the lockdowns – it is now finally decreasing


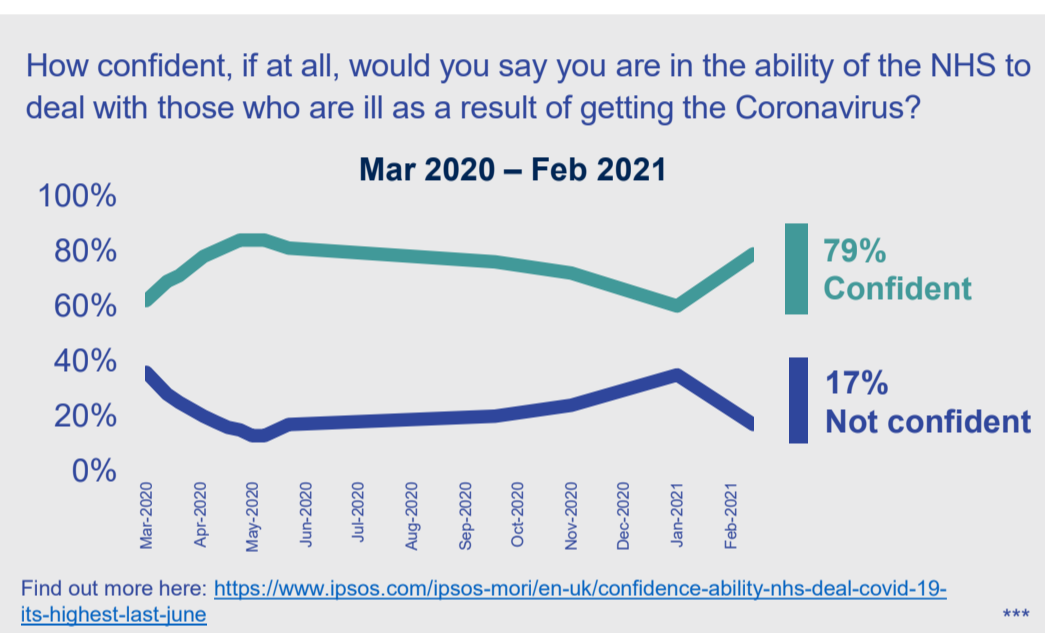
ISSUES FACING BRITAIN

Last year the pandemic quickly became Britain's top concern

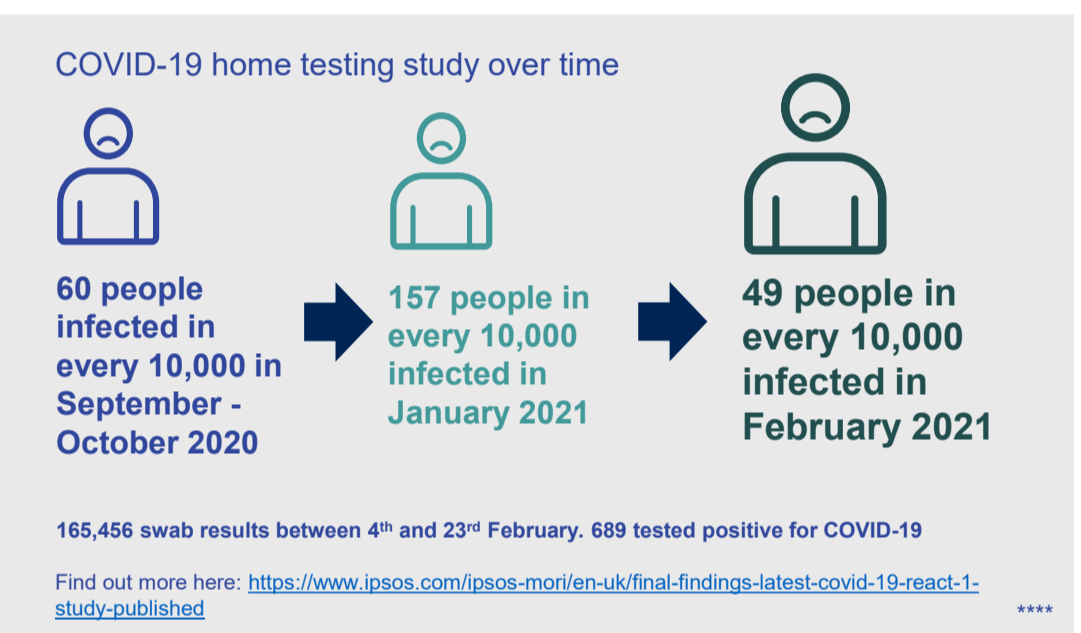
PLANNING NHS RESPONSE

Confidence in the NHS is at its highest since June 2020


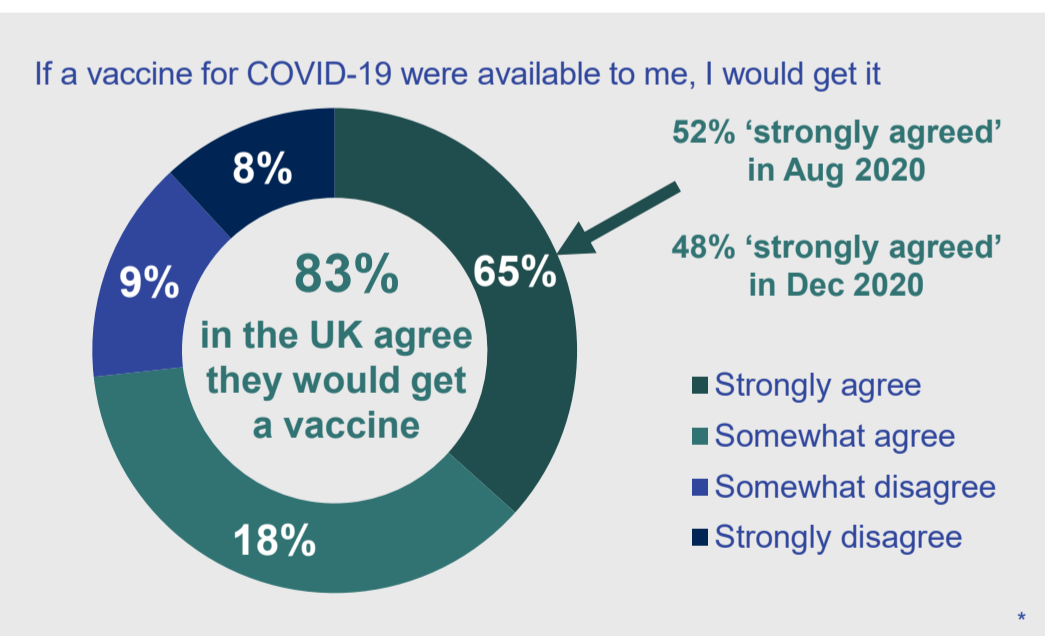
HOME TESTING STUDY

The largest testing programme for coronavirus shows a decline in prevalence of the virus


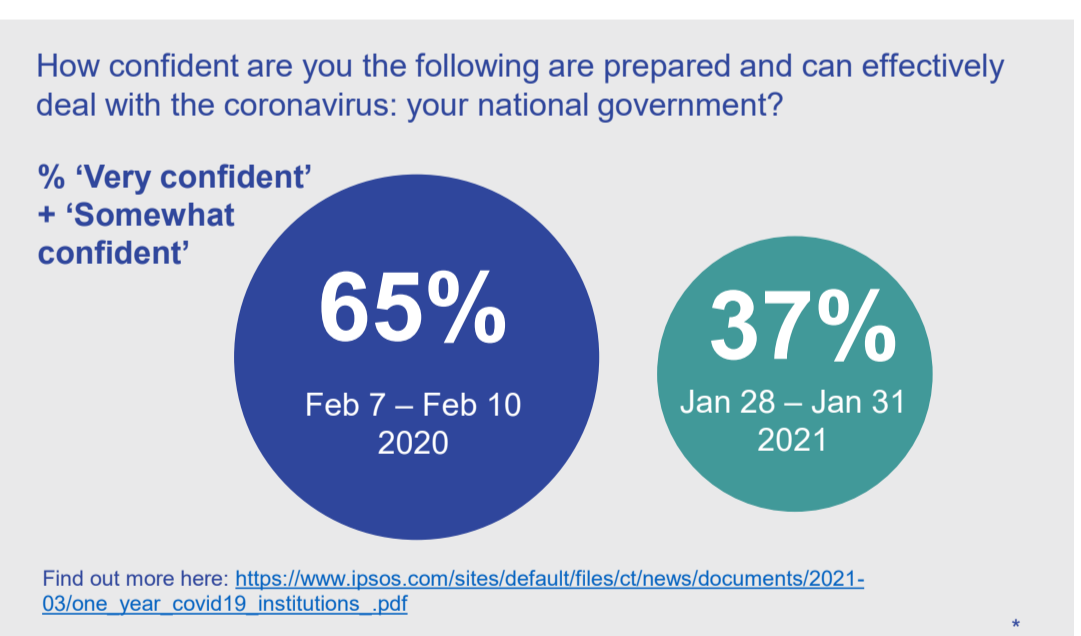
VACCINATION INTENT

Intention among the UK public to get the COVID-19 vaccine has increased

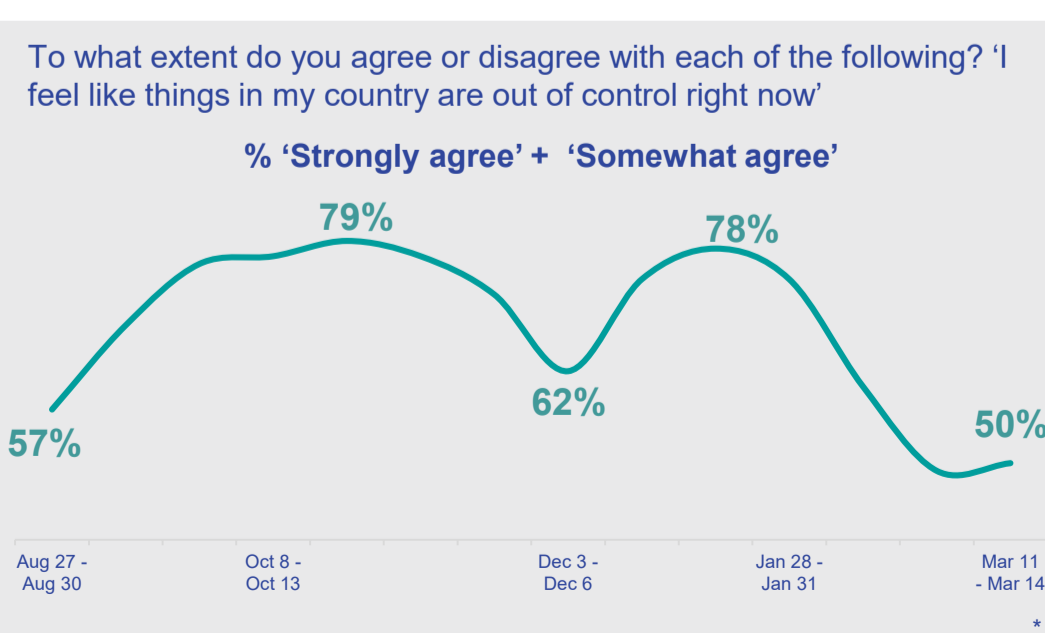
HANDLING OF COVID-19

Confidence in the UK government's ability to deal with the virus has declined over the course of the pandemic

FEELING OF CONTROL

The proportion saying that things feel out of control is falling fast

OUTLOOK

One year on, the public is still divided on when things will return to normal




*Source: Ipsos tracking survey conducted on the Global Advisor online platform, 11th – 14th March 2021. 1,000 British adults aged 16-74. Online survey.

**Source: Ipsos MORI January 2021 Issues Index, c. 1,000 British adults aged 18+ each month. Face-to-face in home survey until April 2020, telephone survey thereafter.

***Source: Ipsos MORI coronavirus polling, 19th – 22nd January 2021. 1,067 British adults aged 18-75. Online omnibus survey.

****Source: Ipsos MORI home testing study for Imperial College London, 4th – 23rd February 2021. Postal swabs returned from 165,456 people.