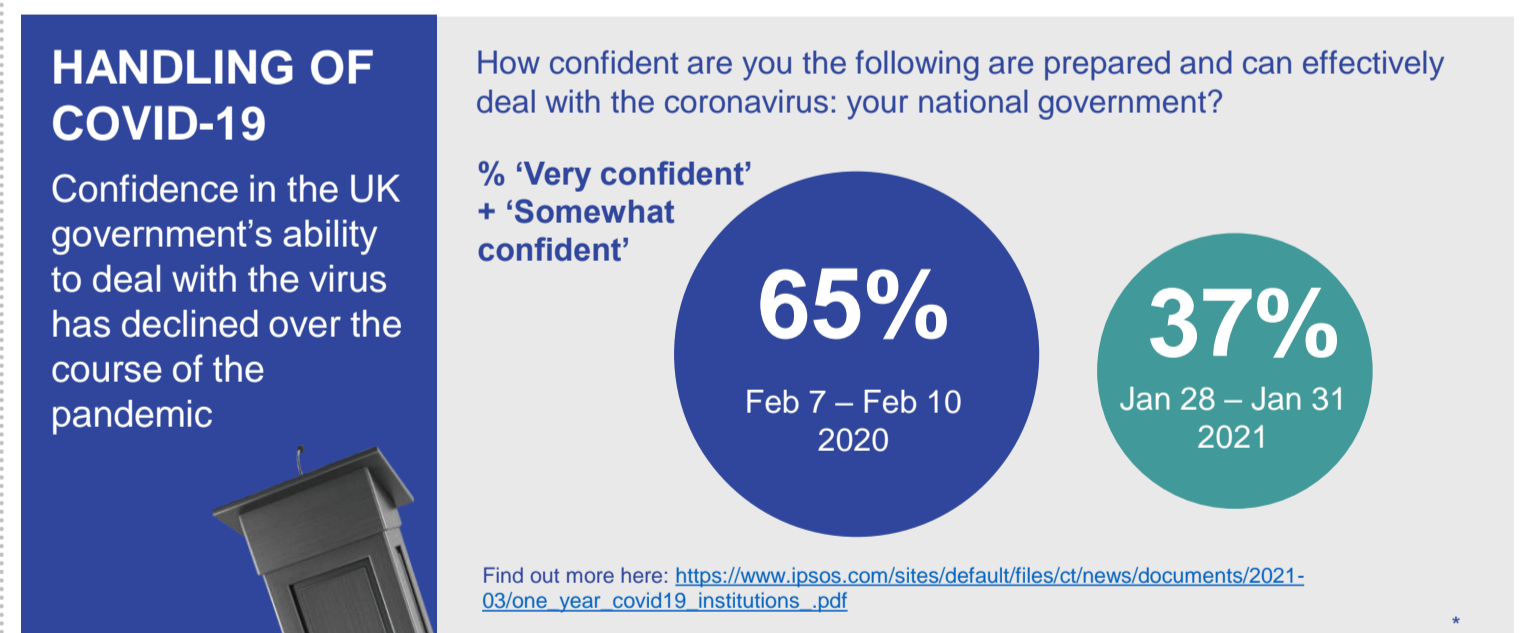
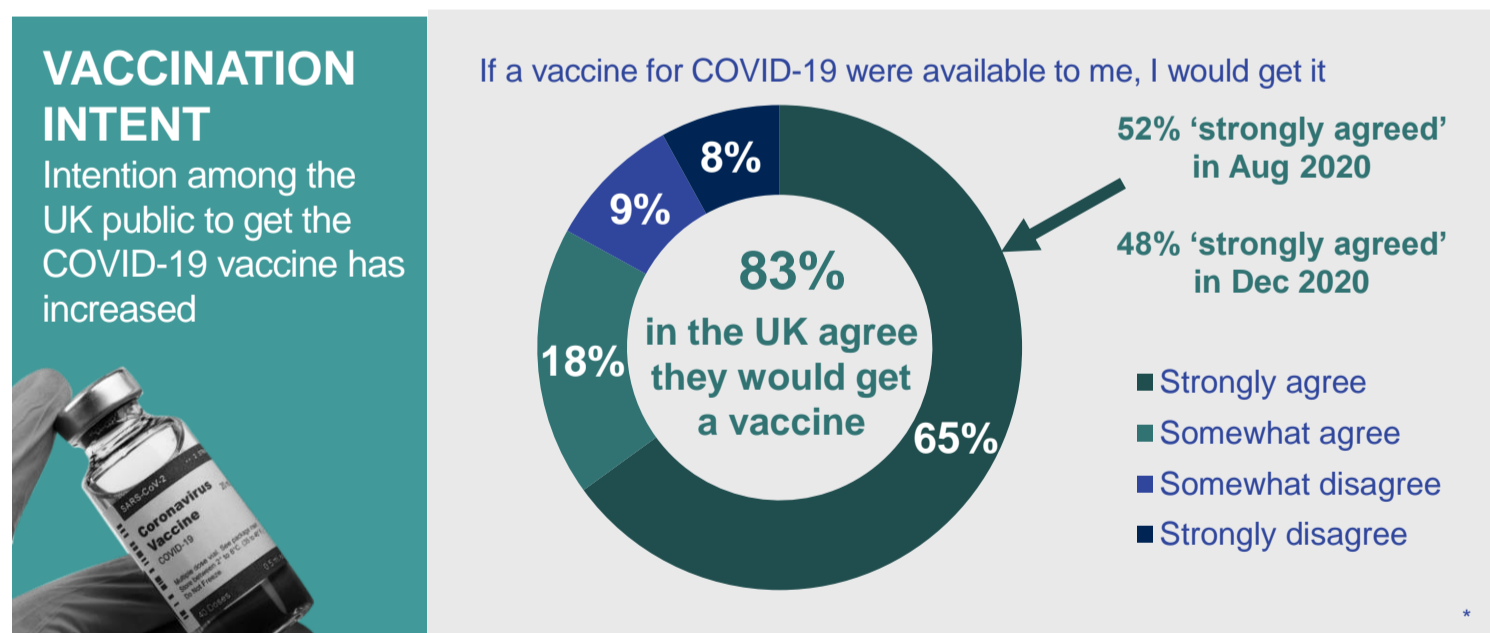
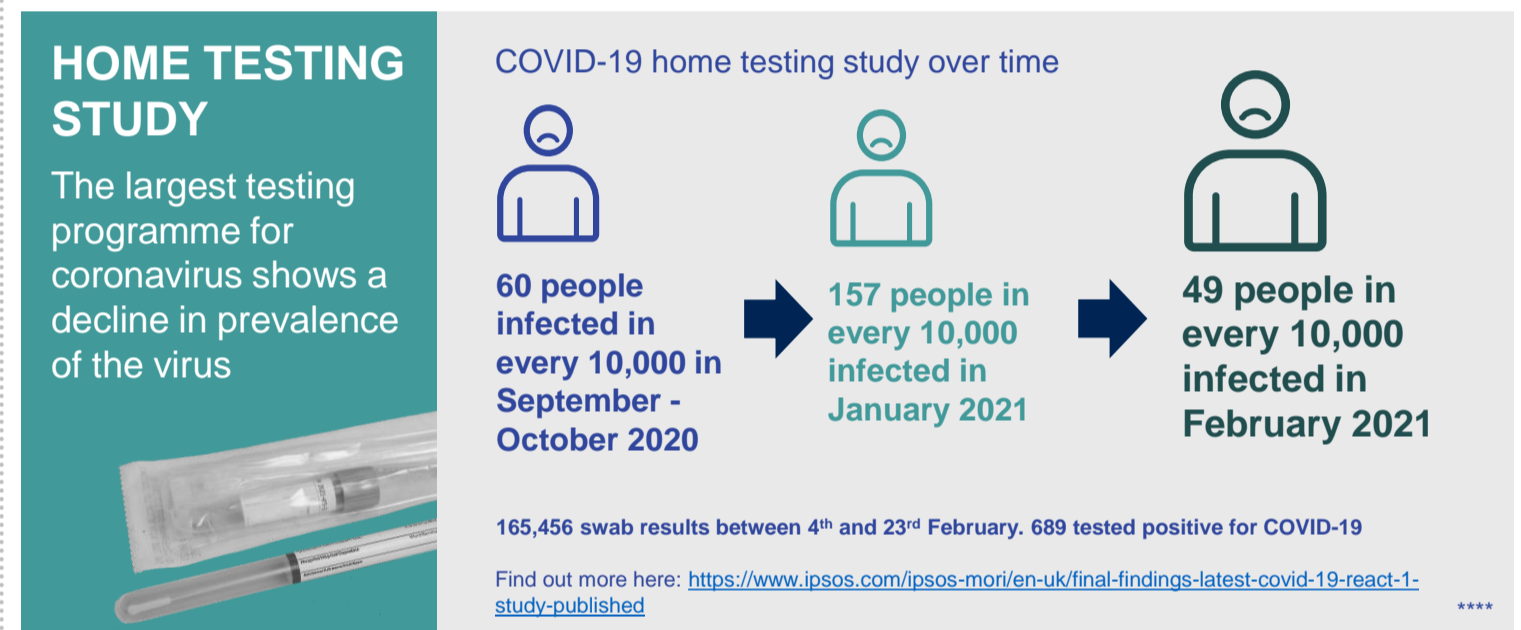
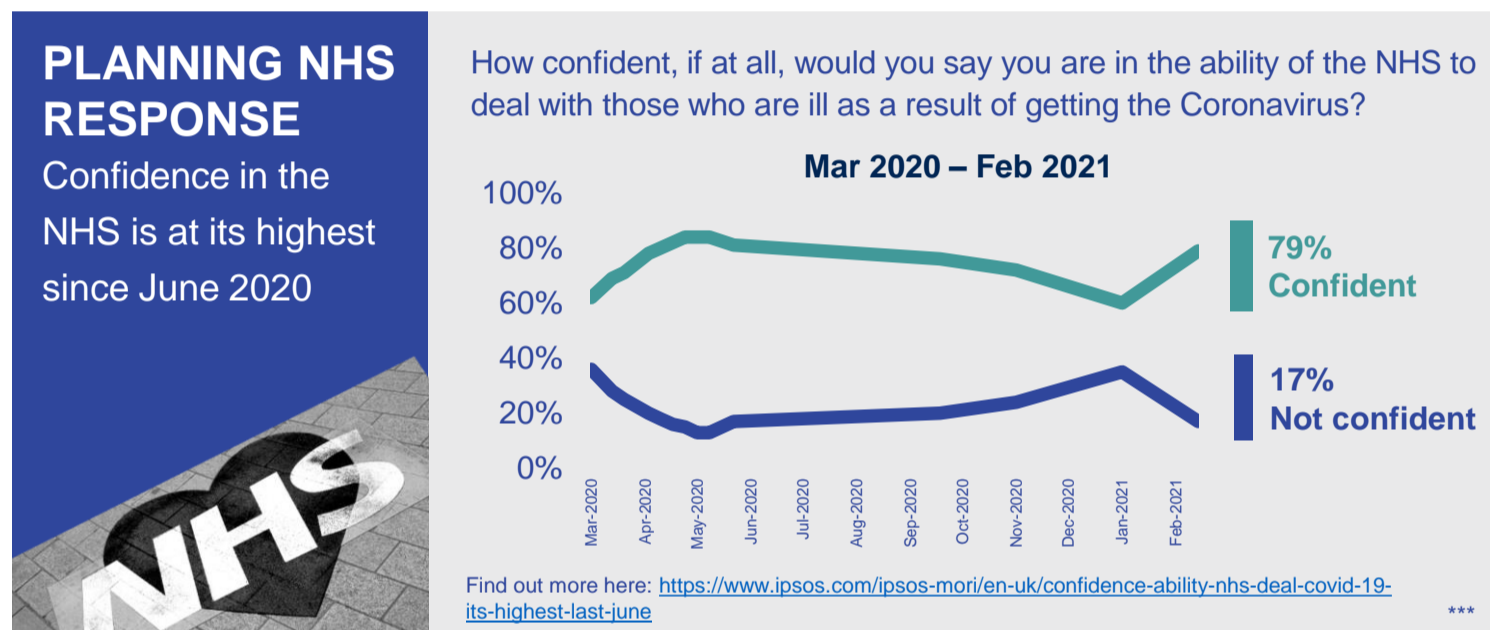
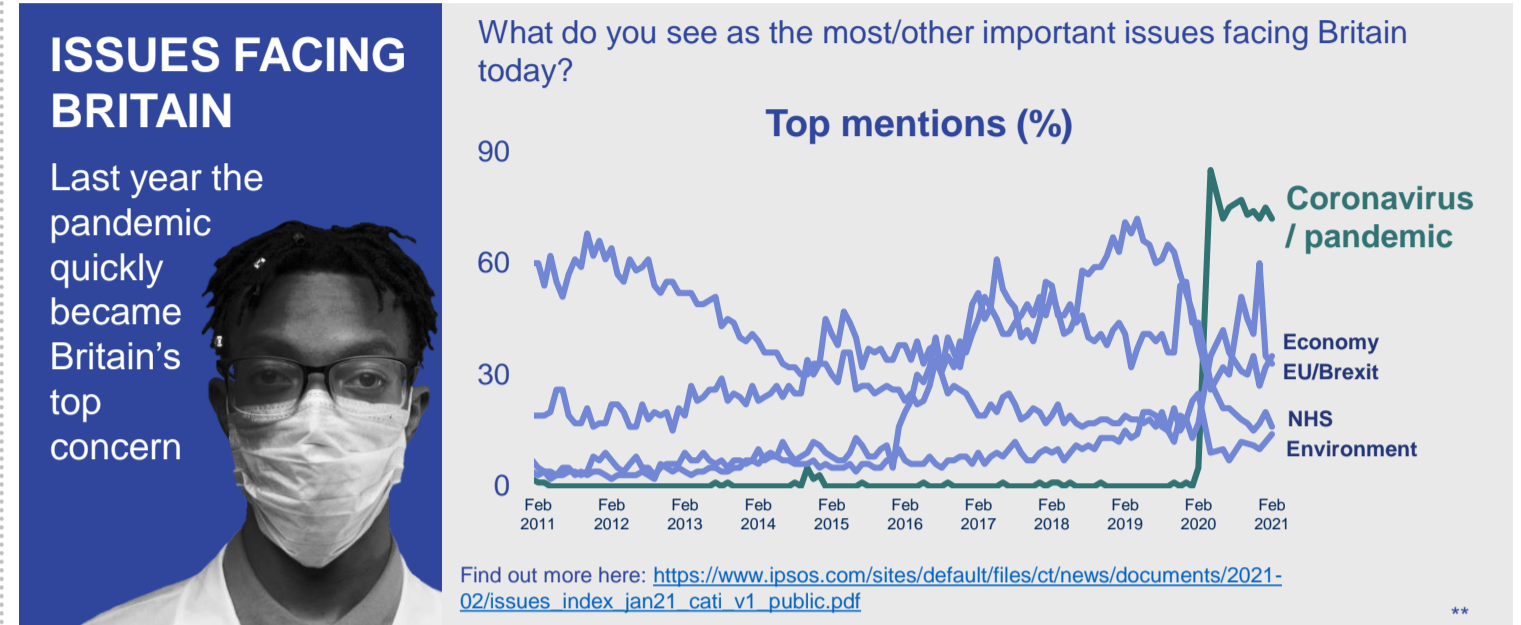
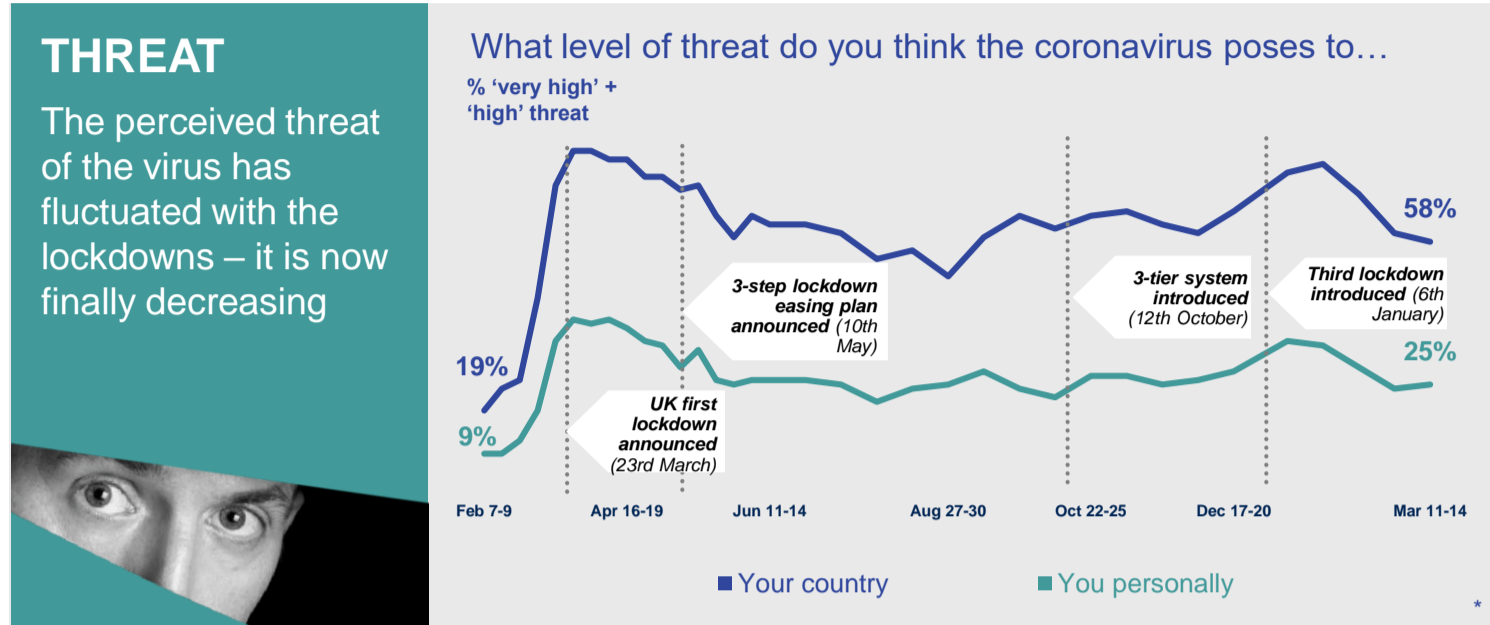


CORONAVIRUS – ONE YEAR ON TRACKING UK PUBLIC PERCEPTION

A snapshot of Ipsos MORI's research and analysis related to the COVID-19 coronavirus pandemic, one year after the first UK lockdown was announced. **25th March 2021**

For more information, visit: www.ipsos.com/ipsos-mori/en-uk/public-opinion-covid-19-coronavirus-pandemic



*Source: Ipsos tracking survey conducted on the Global Advisor online platform, 11th – 14th March 2021. 1,000 British adults aged 16-74. Online survey.

**Source: Ipsos MORI January 2021 Issues Index, c. 1,000 British adults aged 18+ each month. Face-to-face in home survey until April 2020, telephone survey thereafter.

***Source: Ipsos MORI coronavirus polling, 19th – 22nd January 2021. 1,067 British adults aged 18-75. Online omnibus survey.

****Source: Ipsos MORI home testing study for Imperial College London, 4th – 23rd February 2021. Postal swabs returned from 165,456 people.