

Global Advisor

The Economic Pulse of the World

Citizens in 28 Countries Assess the Current State of their Country's Economy for a Total Global Perspective

These are the findings of the *Global Advisor* Wave 114 (G@114), an Ipsos survey conducted between August 24th and September 7th, 2018.

- The survey instrument is conducted monthly in 28 countries around the world via the Ipsos Online Panel system. The countries reporting herein are Argentina, Australia, Belgium, Brazil, Canada, China, Chile, France, Great Britain, Germany, Hungary, India, Israel, Italy, Japan, Malaysia, Mexico, Peru, Poland, Russia, Saudi Arabia, Serbia, South Africa, South Korea, Spain, Sweden, Turkey and the United States of America.
- For the results of the survey presented herein, an international sample of 20,286 adults aged 18-64 in the US, Israel and Canada, and age 16-64 in all other countries, were interviewed. Approximately 1000+ individuals participated on a country by country basis via the Ipsos Online Panel with the exception of Argentina, Belgium, Chile, Hungary, Israel, Malaysia, Mexico, Peru, Poland, Russia, Saudi Arabia, Serbia, South Africa, South Korea, Sweden and Turkey, where each have a sample approximately 500+. The precision of Ipsos online polls are calculated using a credibility interval with a poll of 1,000 accurate to +/- 3.1 percentage points and of 500 accurate to +/- 4.5 percentage points. For more information on the Ipsos use of credibility intervals, please visit the Ipsos website.
- **The results for this wave include extra countries:** Colombia. While these have been added, the total average scores for each section have been calculated without taking these countries into account in order to keep the core 28 country tracking scores consistent with previous waves. Each country has 500+ completed. We occasionally add extra countries to the report in order to either benchmark them or track them on a less frequent basis (perhaps trimester or quarterly) for regional insight.
- 15 of the 28 countries surveyed online generate nationally representative samples in their countries (Argentina, Australia, Belgium, Canada, France, Germany, Great Britain, Hungary, Italy, Japan, Poland, South Korea, Spain, Sweden, and United States).
- Brazil, China, Chile, India, Israel, Malaysia, Mexico, Peru, Russia, Saudi Arabia, Serbia, South Africa and Turkey produce a national sample that is more urban & educated, and with higher incomes than their fellow citizens. We refer to these respondents as “Upper Deck Consumer Citizens”. They are not nationally representative of their country.

ANALYTIC COMPONENTS...

There are three analytic components that make up the findings of this monthly Economic Pulse report. Each question is tracked and analyzed from questions dealing with:

① The currently perceived macroeconomic state of the respondent's country:

- Thinking about our economic situation, how would you describe the current economic situation in [insert country]? Is it very good, somewhat good, somewhat bad or very bad?

② The currently perceived state of the local economy:

- Rate the current state of the economy in your local area using a scale from 1 to 7, where 7 means a very strong economy today and 1 means a very weak economy.

③ A six month outlook for the local economy:

- Looking ahead six months from now, do you expect the economy in your local area to be much stronger, somewhat stronger, about the same, somewhat weaker, or much weaker than it is now?



THE WORLD at a GLANCE

Global Average of National Economic Assessment Unchanged: 46%

- The average global economic assessment of national economies surveyed in 28 countries remains unchanged this wave with 46% of global citizens rating their national economies as 'good'.
- China (85%) remains at the top spot in the national economic assessment category this month, followed by Saudi Arabia (80%), Germany (80%), India (78%), Sweden (70%), the United States (65%) Peru (62%), Australia (61%), Canada (60%), Malaysia (60%), Israel (59%), Chile (52%) and Poland (52%). Argentina (12%) remains at the lowest spot in this assessment, followed by Brazil (15%), South Africa (15%), South Korea (17%), Italy (21%), Spain (21%), France (24%), Hungary (30%), Turkey (31%), Mexico (32%) and Russia (32%).
- *Countries with the greatest improvements in this wave:* Peru (62%, +7 pts.), Japan (41%, +6 pts.), Mexico (32%, +4 pts.), Malaysia (60%, +3 pts.), Canada (60%, +3 pts.), India (78%, +2 pts.) and Germany (80%, +2 pts.).
- *Countries with the greatest declines:* Belgium (50%, -8 pts.), Turkey (31%, -8 pts.), Spain (21%, -6 pts.), China (85%, -5 pts.), Italy (21%, -4 pts.), Saudi Arabia (80%, -3 pts.), South Korea (17%, -5 pts.), Australia (61%, -2 pts.), Israel (59%, -2 pts.) and South Africa (15%, -2 pts.).

Global Average of Local Economic Assessment (35%) Unchanged

- For a third month in a row, when asked to assess their local economy, over one third (35%) of those surveyed in 28 countries agree that the state of the current economy in their local area is 'good'. The local economic assessment is unchanged since last sounding.
- Despite losing points since last sounding, China (76%) is the top country in the local assessment category again, followed by Saudi Arabia (64%), Israel (60%), Germany (59%), India (59%), the United States (56%), Sweden (53%), Chile (51%) Canada (44%) and Malaysia (43%). Argentina (12%) is the lowest ranked country this month, followed by South Africa (13%), Serbia (16%), Brazil (16%), Spain (19%), (South Korea (19%), Japan (19%), Hungary (19%), Russia (20%), Italy (20%), France (21%), Mexico (26%) and Turkey (29%).
- *Countries with the greatest improvements in this wave:* Saudi Arabia (64%, +7 pts.), Malaysia (43%, +6 pts.), Chile (51%, +6 pts.), India (59%, +4 pts.), Mexico (26%, +3 pts.), Great Britain (32%, +3 pts.), the United States (56%, +2 pts.), Spain (19%, +2 pts.), South Korea (19%, +2 pts.) and Poland (37%, +2 pts.).
- *Countries with the greatest declines in this wave:* Belgium (30%, -7 pts.), Argentina (12%, -6 pts.), China (76%, -6 pts.), South Africa (13%, -4 pts.), Brazil (16%, -3 pts.), Sweden (53%, -3 pts.), Turkey (29%, -3 pts.), Canada (44%, -2 pts.) and South Korea (19%, -2 pts.).

Global Average of Future Outlook for Local Economy (27%) Down Two Points

- The future outlook is down two points since last sounding, with over one quarter (27%) of global citizens surveyed in 28 countries expecting their local economy to be stronger six months from now.
- China (65%) remains at the top of this assessment category this month, followed by Saudi Arabia (59%), India (56%), Peru (51%), Chile (51%), Brazil (49%), Mexico (47%), Malaysia (39%), Argentina (33%), the United States (29%) and Turkey (25%). France (7%) has the lowest future outlook score this month again, followed by Belgium (8%), Great Britain (10%), Russia (13%), Israel (13%), Japan (15%), Serbia (15%), Canada (15%), South Korea (16%) and Australia (16%).
- *Countries with the greatest improvements in this wave:* Sweden (23%, +7 pts.), Chile (51%, +6 pts.), Hungary (19%, +5 pts.), Japan (15%, +4 pts.), South Korea (16%, +2 pts.), Saudi Arabia (59%, +1 pts.) and Malaysia (39%, +1 pts.).
- *Countries with the greatest declines in this wave:* Turkey (25%, -11 pts.), China (65%, -7 pts.), Belgium (8%, -6 pts.), Mexico (47%, -6 pts.), Canada (15%, -5 pts.), Serbia (15%, -5 pts.), Israel (13%, -4 pts.), Australia (16%, -3 pts.), Russia (13%, -5 pts.), South Africa (17%, -3 pts.) and the United States (29%, -3 pts.).

Thinking about our economic situation, how would you describe the current economic situation in [insert country]? Is it very good, somewhat good, somewhat bad or very bad?

1. National Economic Assessments: Countries at a Glance Compared to the Last Wave...

Those Countries Where the Local National Economic Assessment...							
is HIGHEST this month		has experienced an IMPROVEMENT since last sounding		has experienced a DECLINE since last sounding		is LOWEST this month	
China	85%	Peru	7%	Belgium	-8%	Great Britain	42%
Saudi Arabia	80%	Japan	6%	Turkey	-8%	Japan	41%
Germany	80%	Mexico	4%	Spain	-6%	Serbia	34%
India	78%	Malaysia	3%	China	-5%	Russia	32%
Sweden	70%	Hungary	3%	Italy	-4%	Mexico	32%
US	65%	Canada	3%	Saudi Arabia	-3%	Turkey	31%
Peru	62%	India	2%	South Korea	-3%	Hungary	30%
Australia	61%	Germany	2%	Australia	-2%	France	24%
Canada	60%	US	1%	Israel	-2%	Spain	21%
Malaysia	60%	Poland	1%	South Africa	-2%	Italy	21%
Israel	59%	Great Britain	1%	Argentina	-1%	South Korea	17%
Chile	52%	Chile	1%	France	-1%	South Africa	15%
Poland	52%			Serbia	-1%	Brazil	15%
Belgium	50%			Sweden	-1%	Argentina	12%

Thinking about our economic situation, how would you describe the current economic situation in [insert country]? Is it very good, somewhat good, somewhat bad or very bad?

1. National Economic Assessment: Regions at a Glance Compared to the Last Wave...

REGION (in descending order by NET)	NET 'Good'	CHANGE (since last sounding)
North America	62%	1%
BRIC	53%	0%
APAC	52%	-1%
Middle East/Africa	47%	-3%
G-8 Countries	46%	1%
Europe	42%	-2%
LATAM	35%	3%

Rate the current state of the economy in your local area using a scale from 1 to 7, where 7 means a very strong economy today and 1 means a very weak economy

2. Local Economic Assessment: Countries at a Glance Compared to the Last Wave...

Those Countries Where the Local Area Economic Assessment...							
is HIGHEST this month		has experienced an IMPROVEMENT since last sounding		has experienced a DECLINE since last sounding		is LOWEST this month	
China	76%	Saudi Arabia	7%	Belgium	-7%	Belgium	30%
Saudi Arabia	64%	Malaysia	6%	Argentina	-6%	Turkey	29%
Israel	60%	Chile	6%	China	-6%	Mexico	26%
Germany	59%	India	4%	South Africa	-4%	France	21%
India	59%	Mexico	3%	Brazil	-3%	Italy	20%
US	56%	Great Britain	3%	Sweden	-3%	Russia	20%
Sweden	53%	US	2%	Turkey	-3%	Hungary	19%
Chile	51%	Spain	2%	Canada	-2%	Japan	19%
Canada	44%	South Korea	2%	Hungary	-2%	South Korea	19%
Malaysia	43%	Poland	2%	Australia	-1%	Spain	19%
Australia	41%	Japan	1%	France	-1%	Brazil	16%
Poland	37%	Israel	1%	Germany	-1%	Serbia	16%
Peru	33%			Italy	-1%	South Africa	13%
Great Britain	32%					Argentina	12%

Rate the current state of the economy in your local area using a scale from 1 to 7, where 7 means a very strong economy today and 1 means a very weak economy

2. Local Economic Assessment: Regions at a Glance Compared to the Last Wave...

REGION (in descending order by NET)	NET 'Strong' Top 3 Box (5-6-7)	CHANGE (since last sounding)
North America	50%	0%
BRIC	43%	-1%
Middle East/Africa	41%	0%
APAC	39%	0%
Europe	31%	0%
G-8 Countries	34%	0%
LATAM	28%	0%

Looking ahead six months from now, do you expect the economy in your local area to be much stronger, somewhat stronger, about the same, somewhat weaker, or much weaker than it is now?

3. Six Month Outlook on the Local Economy: Countries at a Glance Compared to the Last Wave...

Countries where the Assessment of the Local Economic Strengthening ...							
is HIGHEST this month		has experienced an IMPROVEMENT since last sounding		has experienced a DECLINE since last sounding		is LOWEST this month	
China	65%	Sweden	7%	Turkey	-11%	Hungary	19%
Saudi Arabia	59%	Chile	6%	China	-7%	South Africa	17%
India	56%	Hungary	5%	Belgium	-6%	Germany	17%
Peru	51%	Japan	4%	Mexico	-6%	Spain	17%
Chile	51%	South Korea	2%	Canada	-5%	Australia	16%
Brazil	49%	Saudi Arabia	1%	Serbia	-5%	South Korea	16%
Mexico	47%	Malaysia	1%	Israel	-4%	Canada	15%
Malaysia	39%			Australia	-3%	Serbia	15%
Argentina	33%			Russia	-3%	Japan	15%
US	29%			South Africa	-3%	Israel	13%
Turkey	25%			US	-3%	Russia	13%
Poland	25%			Argentina	-2%	Great Britain	10%
Sweden	23%			France	-2%	Belgium	8%
Italy	19%			Great Britain	-2%	France	7%

Looking ahead six months from now, do you expect the economy in your local area to be much stronger, somewhat stronger, about the same, somewhat weaker, or much weaker than it is now?

3. Six Month Outlook on Local Economy: Regions at a Glance Compared to Last Wave...

REGION (in descending order by NET)	NET 'Stronger'	CHANGE (since last sounding)
BRIC	46%	-3%
LATAM	46%	-1%
APAC	30%	-2%
Middle East/Africa	29%	-4%
North America	22%	-4%
Europe	16%	-1%
G-8 Countries	16%	-1%

DETAILED FINDINGS



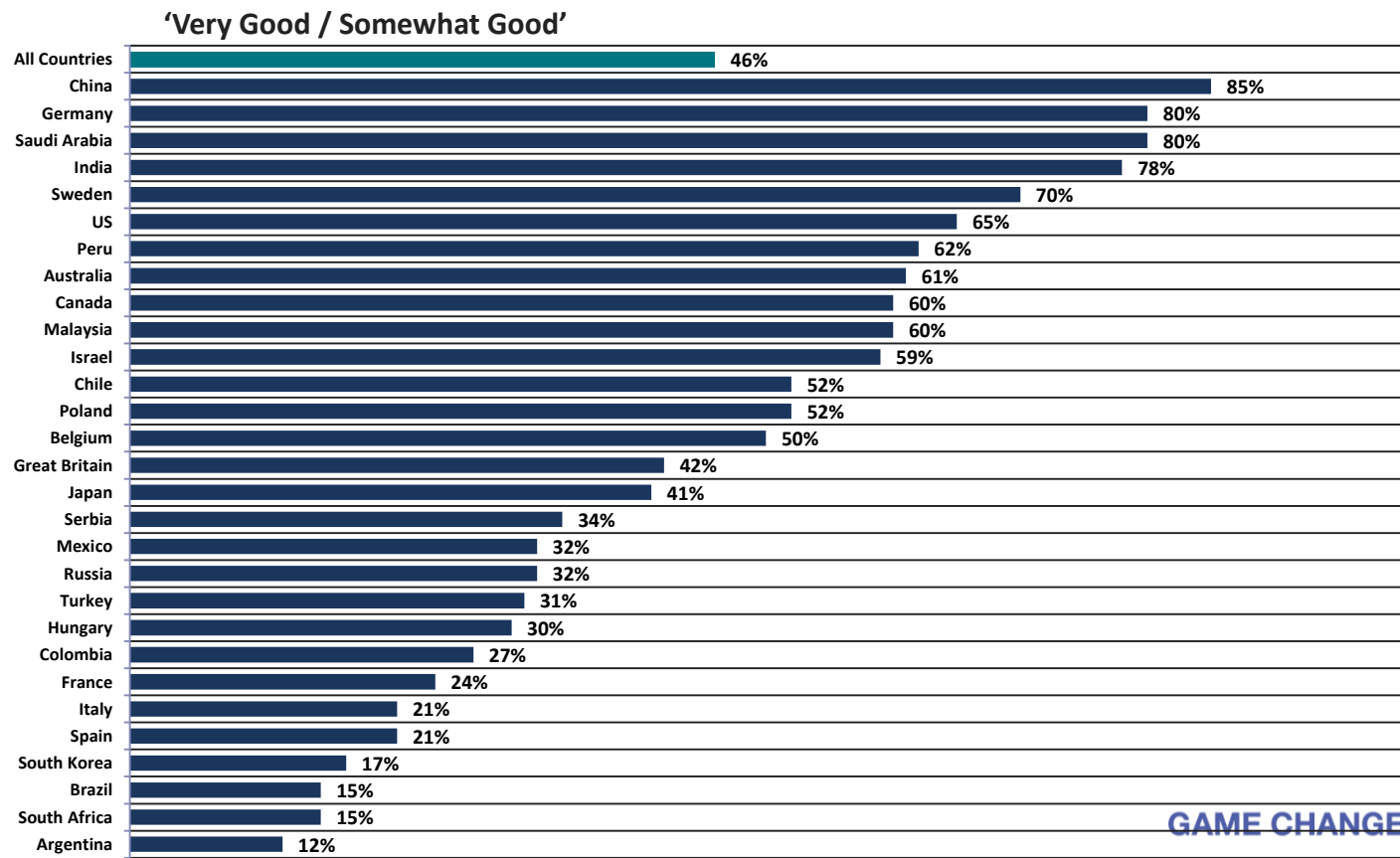
1 Assessing The Current Economic Situation

in Their Country



Now thinking about our economic situation, how would you describe the current economic situation in [insert country]? Is it very good, somewhat good, somewhat bad or very bad?

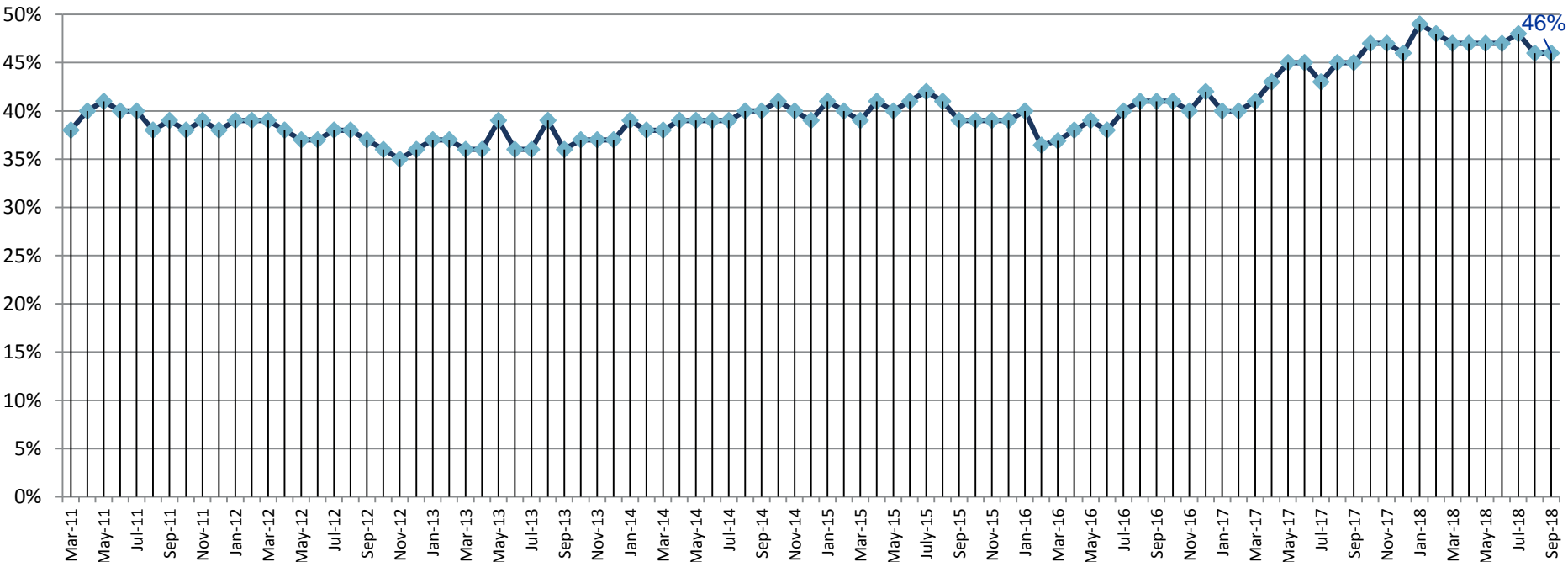
Global Citizens Assess the Current Economic Situation in their Country as “Good”



Now thinking about our economic situation, how would you describe the current economic situation in [insert country]? Is it very good, somewhat good, somewhat bad or very bad?

Global Average Tracked - Global Citizens Assess the Current Economic Situation in their Country as “Good”...

Total Good



Now thinking about our economic situation, how would you describe the current economic situation in [insert country]? Is it very good, somewhat good, somewhat bad or very bad?

For All Countries Tracked: Citizens Assess the Current Economic Situation in their Country as “Good”

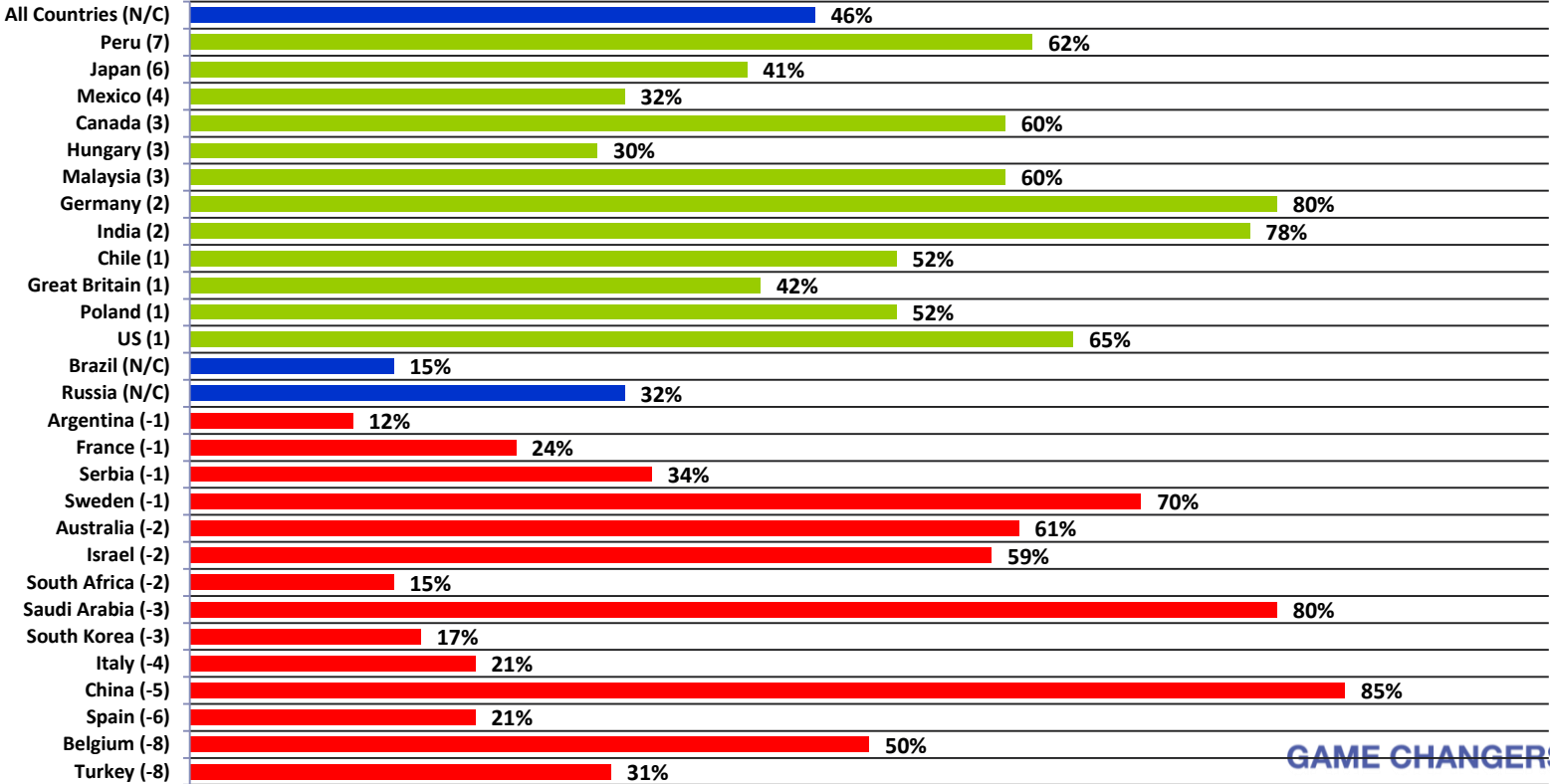
	Sep '15	Oct '15	Nov '15	Dec '15	Jan '16	Feb '16	Mar '16	Apr '16	May '16	Jun '16	Jul '16	Aug '16	Sep '16	Oct '16	Nov '16	Dec '16	Jan '17	Feb '17	Mar '17	Apr '17	May '17	Jun '17	Jul '17	Aug '17	Sep '17	Oct '17	Nov '17	Dec '17	Jan '18	Feb '18	Mar '18	Apr '18	May '18	Jun '18	Jul '18	Aug '18	Sep '18	
Total	39%	39%	39%	39%	40%	36%	37%	38%	39%	38%	40%	41%	41%	41%	40%	42%	40%	40%	41%	43%	45%	45%	43%	45%	45%	47%	47%	46%	49%	48%	47%	47%	47%	47%	48%	46%	46%	
Argentina	28%	29%	29%	27%	28%	24%	15%	15%	17%	21%	19%	19%	18%	20%	21%	23%	20%	23%	21%	21%	27%	22%	19%	20%	33%	34%	38%	28%	32%	28%	26%	30%	21%	21%	20%	13%	12%	
Australia	54%	53%	55%	57%	59%	56%	52%	52%	59%	51%	56%	55%	55%	58%	60%	62%	60%	57%	58%	60%	59%	58%	56%	60%	69%	60%	61%	67%	69%	64%	63%	62%	66%	66%	63%	61%		
Belgium	42%	35%	43%	35%	40%	38%	39%	33%	36%	27%	33%	39%	37%	28%	33%	36%	37%	41%	34%	45%	47%	49%	48%	46%	45%	51%	53%	58%	56%	52%	54%	50%	58%	55%	54%	58%	50%	
Brazil	6%	8%	8%	4%	8%	8%	7%	8%	7%	6%	8%	12%	7%	9%	9%	13%	9%	10%	11%	9%	10%	9%	12%	9%	17%	13%	11%	11%	17%	10%	11%	14%	15%	10%	15%	15%	15%	
Chile																													57%	66%	61%	62%	52%	63%	61%	51%	52%	
Canada	45%	51%	52%	51%	44%	34%	36%	49%	52%	53%	57%	59%	56%	54%	53%	61%	52%	55%	56%	59%	56%	59%	62%	69%	67%	67%	68%	61%	65%	55%	56%	56%	55%	61%	64%	57%	60%	
China	68%	69%	72%	74%	66%	61%	67%	67%	65%	69%	71%	72%	72%	76%	76%	79%	74%	76%	78%	80%	81%	82%	78%	84%	86%	84%	87%	86%	90%	88%	88%	89%	84%	86%	82%	90%	85%	
France	10%	14%	12%	13%	18%	9%	12%	12%	13%	11%	13%	16%	13%	11%	14%	21%	16%	14%	17%	15%	17%	25%	24%	22%	23%	25%	27%	34%	35%	32%	29%	28%	29%	28%	25%	24%		
Germany	77%	73%	71%	74%	79%	72%	67%	74%	73%	74%	78%	76%	75%	75%	77%	76%	77%	74%	81%	79%	81%	82%	79%	80%	80%	80%	80%	80%	81%	79%	79%	80%	83%	81%	82%	78%	80%	
Great Britain	53%	48%	45%	45%	48%	49%	49%	39%	44%	48%	37%	42%	45%	50%	41%	38%	43%	44%	44%	48%	47%	42%	39%	40%	36%	41%	40%	35%	43%	41%	45%	45%	51%	40%	46%	41%	42%	
Hungary	16%	20%	19%	23%	16%	19%	20%	22%	16%	18%	18%	19%	21%	21%	17%	24%	25%	23%	22%	22%	25%	27%	19%	26%	29%	27%	27%	23%	26%	32%	26%	28%	31%	32%	36%	27%	30%	
India	79%	82%	76%	79%	84%	76%	82%	81%	80%	81%	81%	83%	84%	82%	86%	79%	78%	80%	77%	82%	83%	82%	80%	82%	80%	74%	76%	81%	81%	77%	79%	76%	74%	77%	76%	76%	78%	
Israel	52%	44%	42%	46%	42%	47%	43%	52%	42%	48%	50%	48%	52%	53%	49%	46%	46%	48%	54%	57%	60%	59%	52%	57%	50%	58%	57%	57%	60%	65%	58%	62%	66%	66%	63%	61%	59%	
Italy	14%	13%	13%	16%	13%	14%	13%	14%	14%	14%	13%	15%	13%	15%	14%	18%	15%	15%	16%	12%	14%	17%	17%	14%	16%	17%	17%	17%	17%	18%	18%	20%	18%	18%	23%	25%	21%	
Japan	27%	29%	26%	27%	29%	26%	23%	21%	19%	19%	21%	23%	26%	29%	28%	38%	29%	32%	30%	34%	34%	38%	37%	34%	34%	39%	40%	37%	42%	39%	41%	38%	37%	36%	36%	35%	41%	
Malaysia																														45%	47%	41%	40%	45%	56%	66%	57%	60%
Mexico	21%	23%	27%	24%	24%	17%	23%	24%	20%	19%	14%	23%	20%	17%	20%	21%	14%	14%	17%	20%	27%	25%	22%	31%	31%	28%	27%	27%	31%	27%	22%	24%	26%	27%	32%	28%	32%	
Peru				52%	52%	46%	45%	52%	54%	54%	61%	62%	69%	65%	65%	72%	67%	61%	60%	62%	77%	69%	52%	60%	58%	63%	61%	59%	63%	55%	60%	55%	54%	50%	54%	55%	62%	
Poland	35%	36%	30%	36%	35%	33%	29%	36%	31%	31%	38%	41%	42%	37%	36%	39%	36%	35%	40%	41%	44%	46%	48%	49%	52%	60%	49%	53%	59%	55%	54%	50%	57%	55%	56%	51%	52%	
Russia	34%	30%	29%	36%	32%	21%	28%	25%	28%	26%	27%	29%	28%	28%	29%	29%	33%	32%	33%	34%	35%	32%	36%	37%	34%	36%	44%	34%	42%	36%	36%	33%	35%	35%	34%	32%	32%	
Saudi Arabia	87%	90%	91%	90%	86%	88%	89%	86%	91%	88%	91%	87%	78%	80%	82%	79%	80%	78%	74%	79%	87%	84%	80%	76%	81%	83%	80%	81%	73%	78%	77%	80%	81%	83%	81%	83%	80%	
Serbia																		21%	27%	32%	31%	32%	33%	32%	27%	25%	33%	37%	38%	40%	34%	39%	38%	37%	35%	34%		
South Africa	16%	19%	18%	12%	12%	13%	9%	11%	17%	13%	12%	12%	17%	18%	15%	15%	16%	18%	18%	17%	13%	14%	9%	13%	14%	10%	15%	12%	19%	25%	30%	29%	22%	19%	17%	17%	15%	
South Korea	14%	18%	12%	13%	11%	13%	13%	13%	13%	10%	13%	14%	13%	15%	10%	15%	7%	7%	7%	10%	13%	23%	24%	24%	20%	25%	27%	30%	29%	26%	25%	28%	33%	23%	25%	20%	17%	
Spain	19%	17%	17%	17%	18%	14%	15%	15%	14%	13%	14%	16%	16%	15%	13%	17%	17%	16%	18%	21%	22%	22%	24%	25%	25%	28%	26%	21%	24%	17%	20%	23%	22%	23%	25%	27%	21%	
Sweden	65%	72%	63%	58%	65%	56%	63%	69%	68%	65%	74%	68%	70%	65%	66%	66%	69%	69%	70%	69%	77%	69%	72%	75%	72%	78%	75%	77%	71%	78%	77%	69%	65%	68%	63%	71%	70%	
Turkey	28%	29%	42%	40%	45%	36%	38%	40%	42%	39%	41%	40%	43%	50%	45%	37%	37%	29%	38%	39%	42%	37%	40%	41%	47%	40%	36%	37%	35%	37%	39%	37%	32%	32%	41%	39%	31%	
United States	42%	43%	44%	45%	45%	44%	45%	46%	48%	48%	49%	53%	50%	48%	45%	55%	52%	55%	57%	59%	57%	62%	57%	61%	61%	63%	60%	61%	66%	64%	66%	66%	63%	61%	63%	64%	65%	

Thinking about our economic situation, how would you describe the current economic situation in [insert country]? Is it very good, somewhat good, somewhat bad or very bad?

Countries Ranked and Marked By Change In Assessment From Last Month (Left Column)

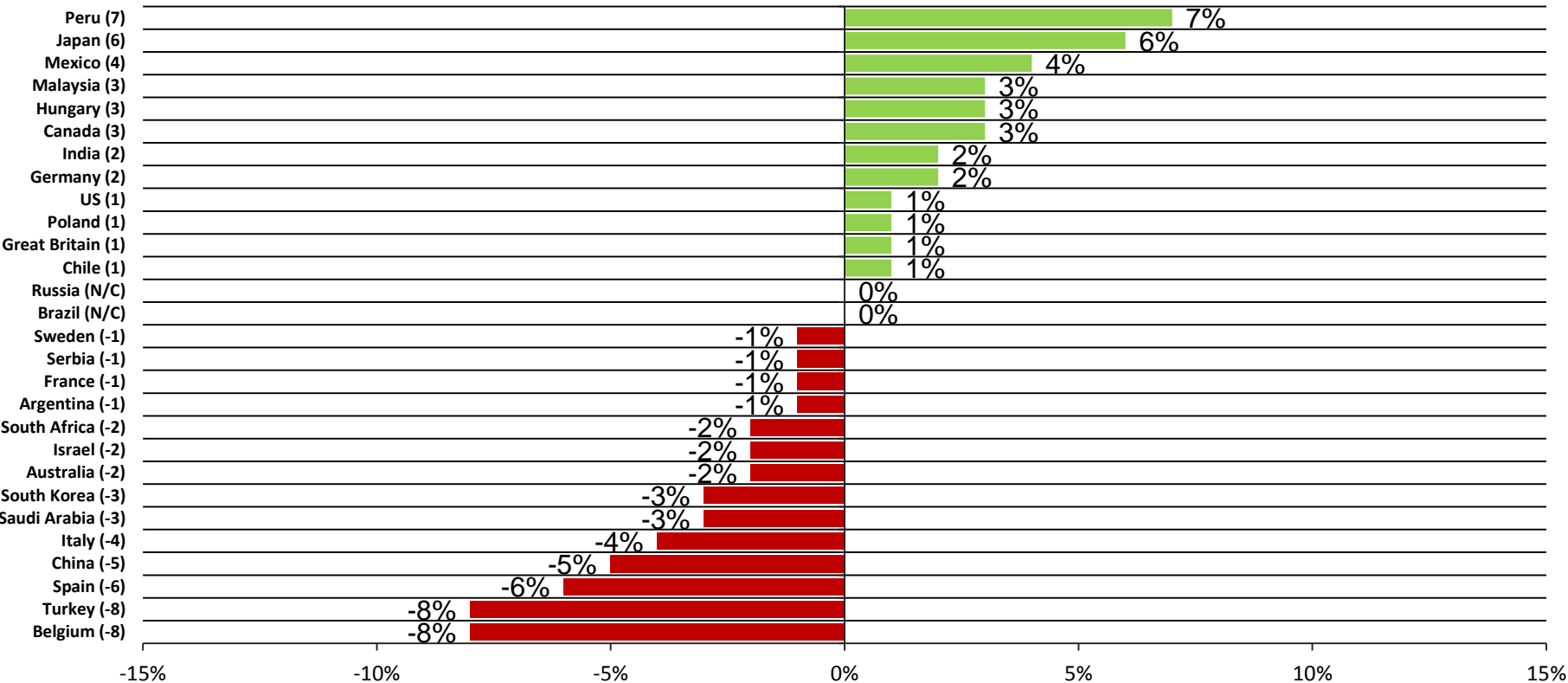
Green marks countries experiencing improvement;
Blue marks countries with no change from last month;
Red marks countries experiencing a decline;

% Very Good / Somewhat Good



Thinking about our economic situation, how would you describe the current economic situation in [insert country]? Is it very good, somewhat good, somewhat bad or very bad?

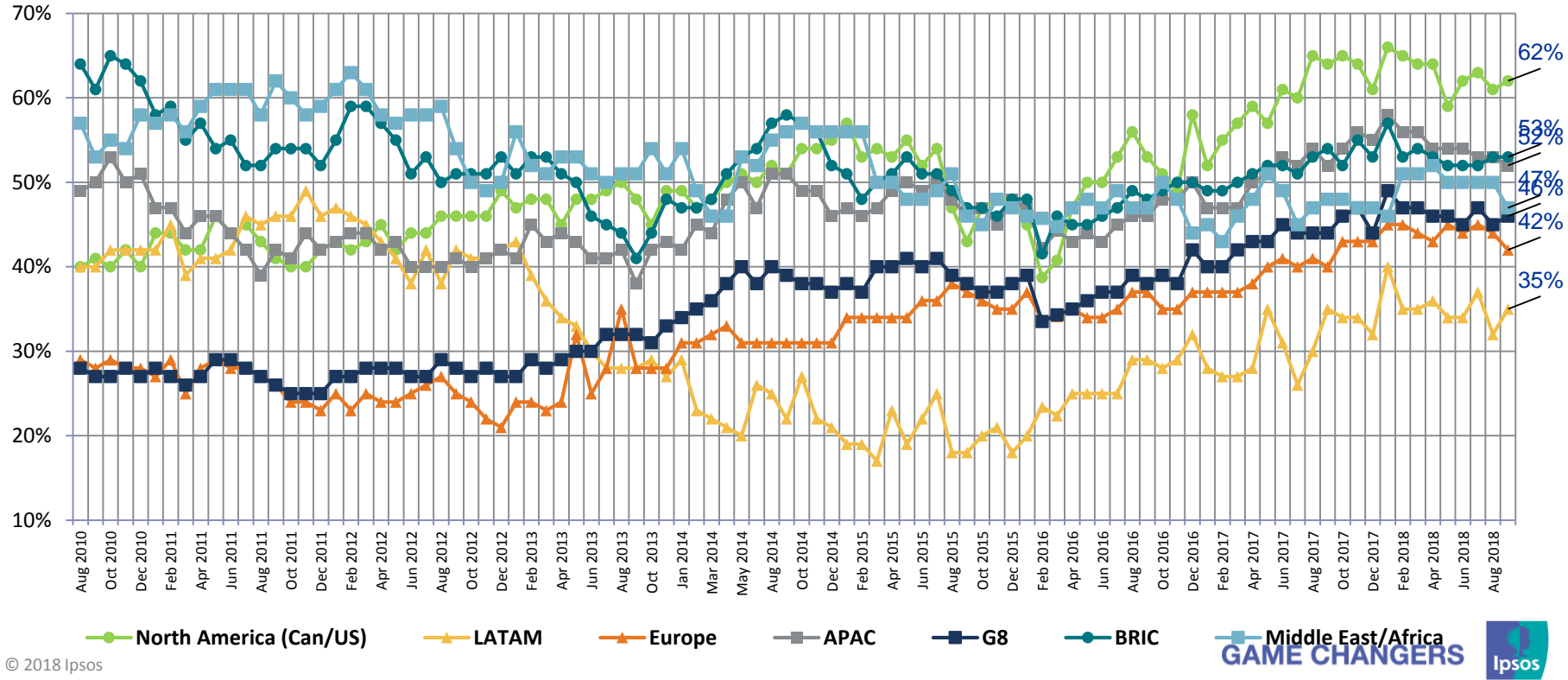
Countries Ranked by Net Improvement, Decline or No Change Compared to Last Month:



Now thinking about our economic situation, how would you describe the current economic situation in [insert country]? Is it very good, somewhat good, somewhat bad or very bad?

Assessing the Current Economic Situation by All Regions:

Very Good / Somewhat Good

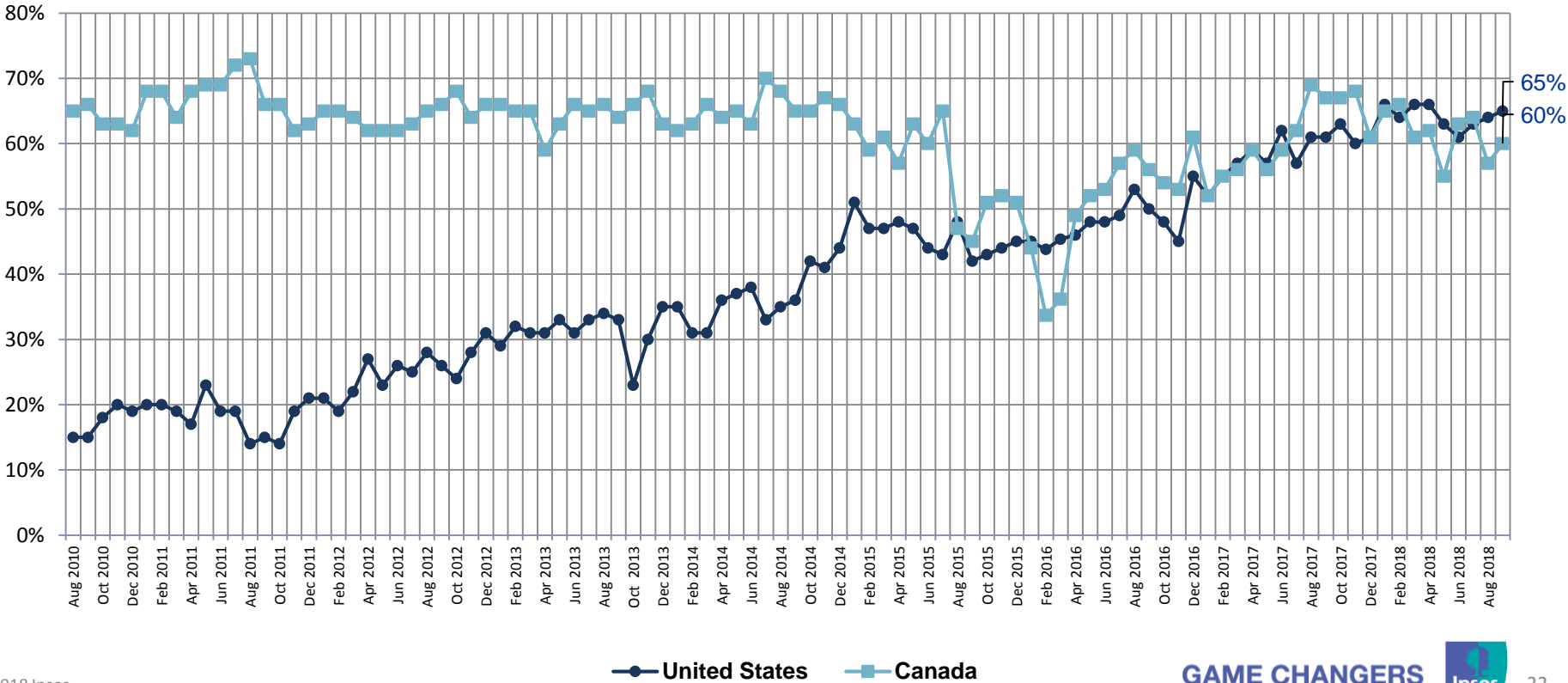


Now thinking about our economic situation, how would you describe the current economic situation in [insert country]? Is it very good, somewhat good, somewhat bad or very bad?

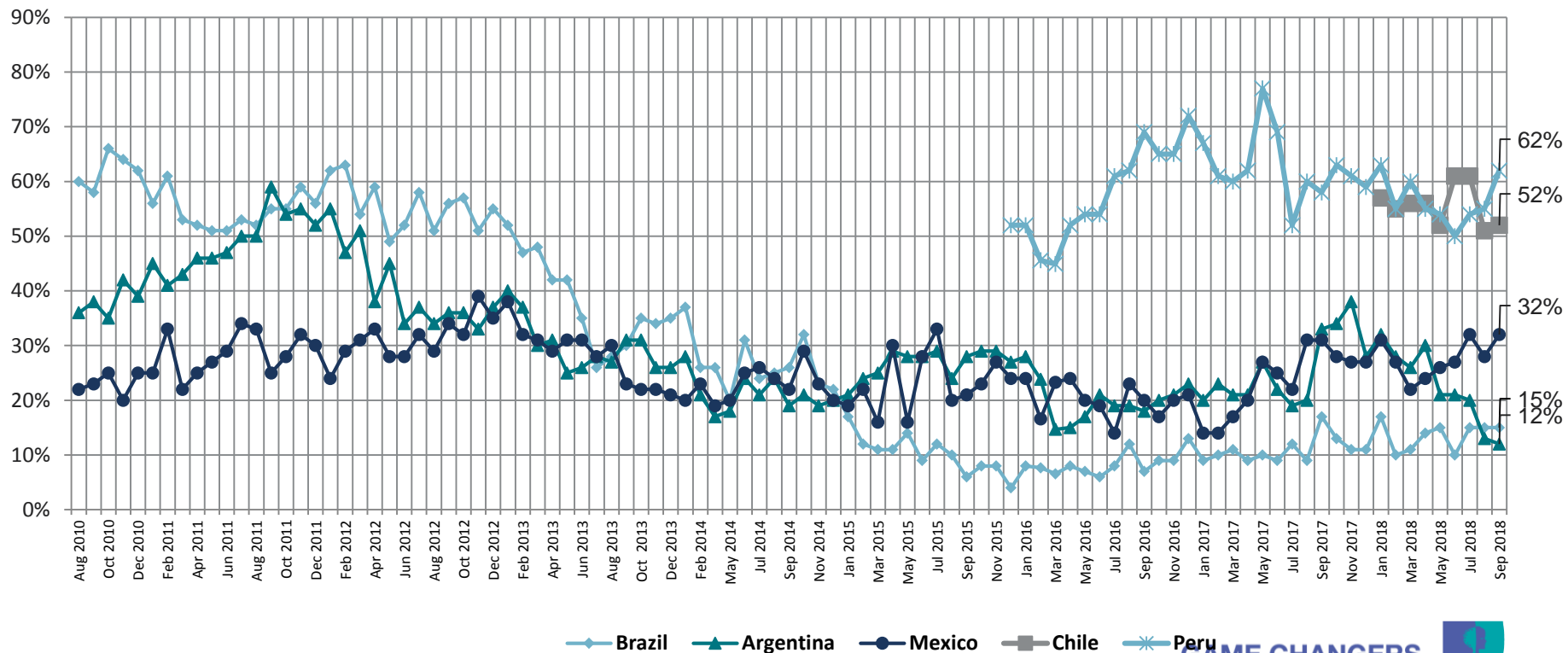


North American (Canada/US) Countries - Assessing the Current Economic Situation

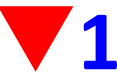
Very Good / Somewhat Good



Very Good / Somewhat Good

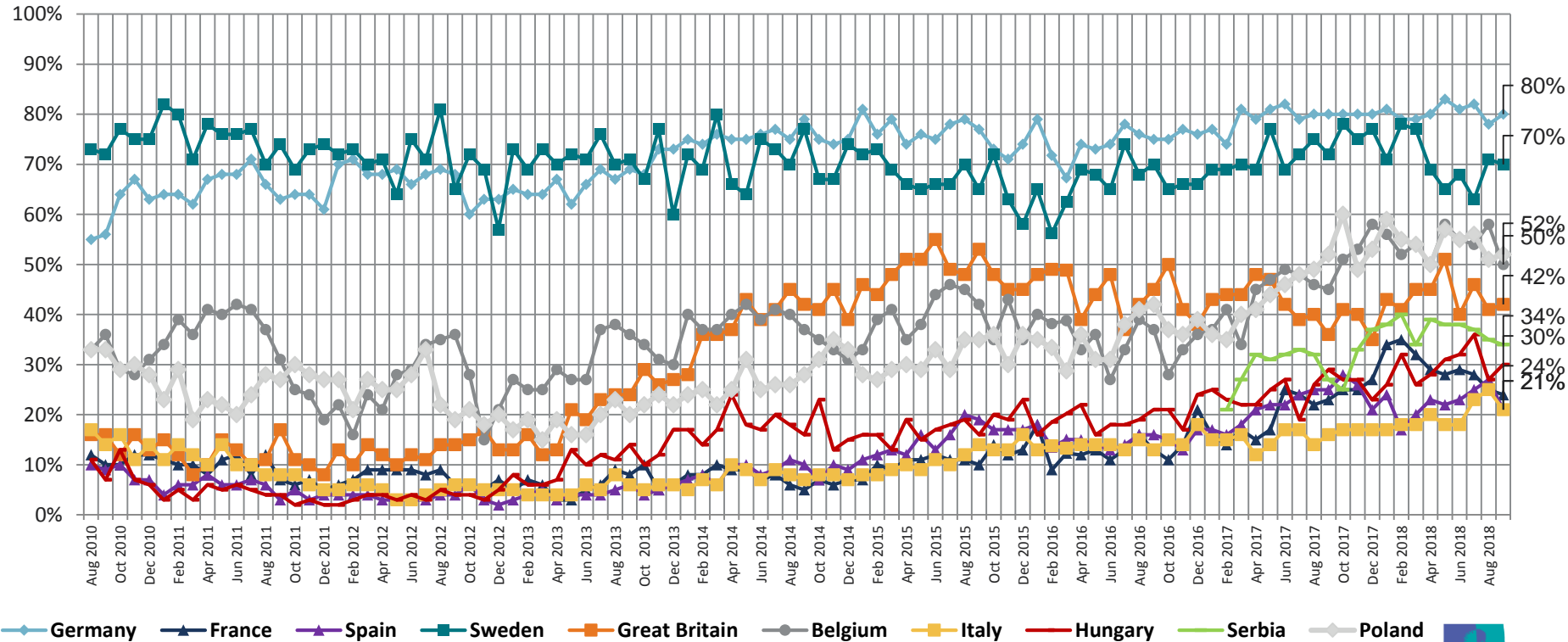


Now thinking about our economic situation, how would you describe the current economic situation in [insert country]? Is it very good, somewhat good, somewhat bad or very bad?



European Countries - Assessing the Current Economic Situation

Very Good / Somewhat Good

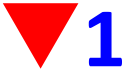


Very Good / Somewhat Good



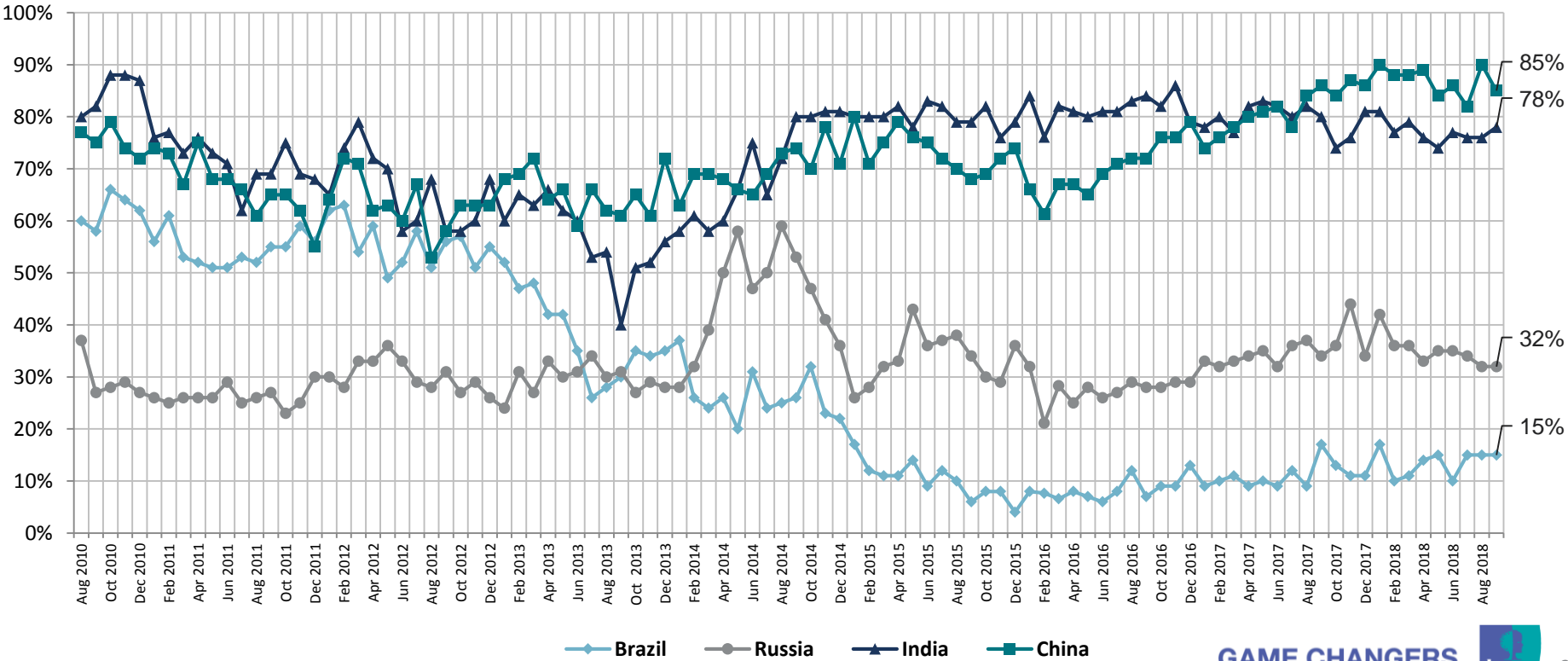
Very Good / Somewhat Good

Now thinking about our economic situation, how would you describe the current economic situation in [insert country]? Is it very good, somewhat good, somewhat bad or very bad?



BRIC Countries - Assessing the Current Economic Situation

Very Good / Somewhat Good

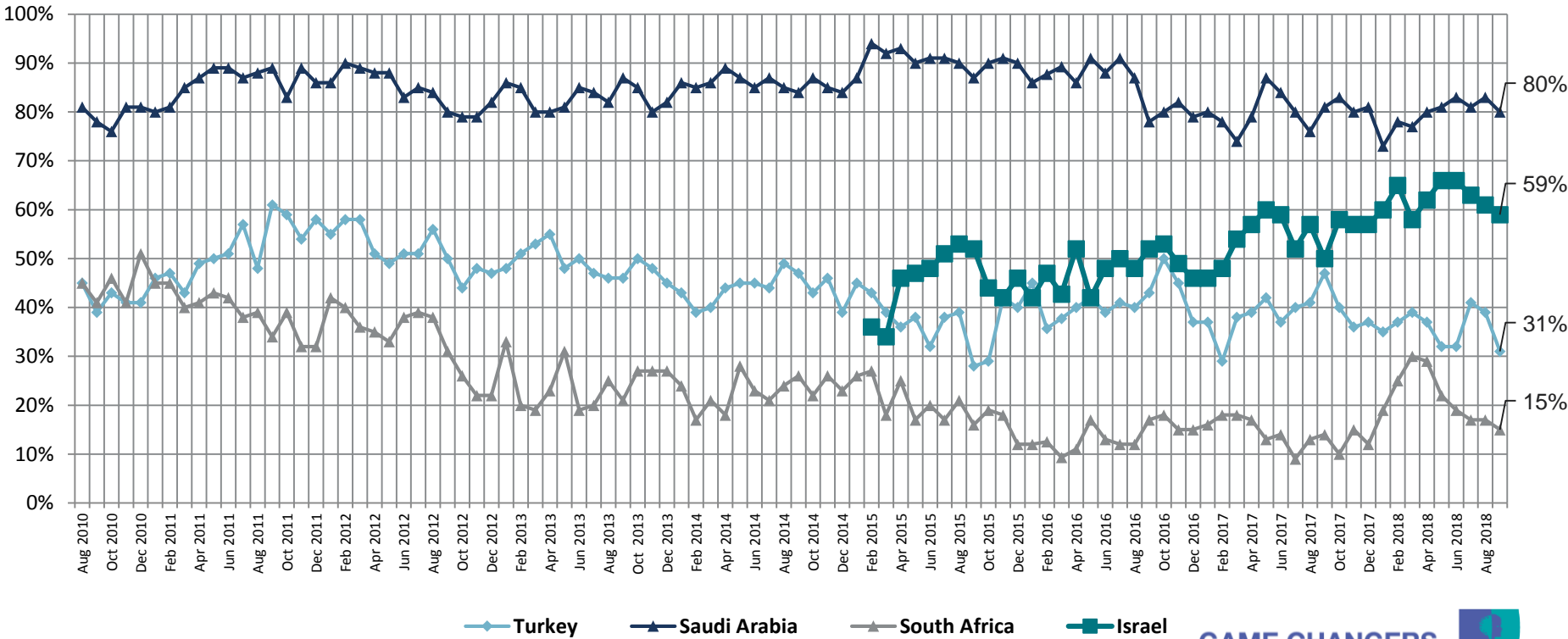


Now thinking about our economic situation, how would you describe the current economic situation in [insert country]? Is it very good, somewhat good, somewhat bad or very bad?



Middle East/African Countries - Assessing the Current Economic Situation

Very Good / Somewhat Good



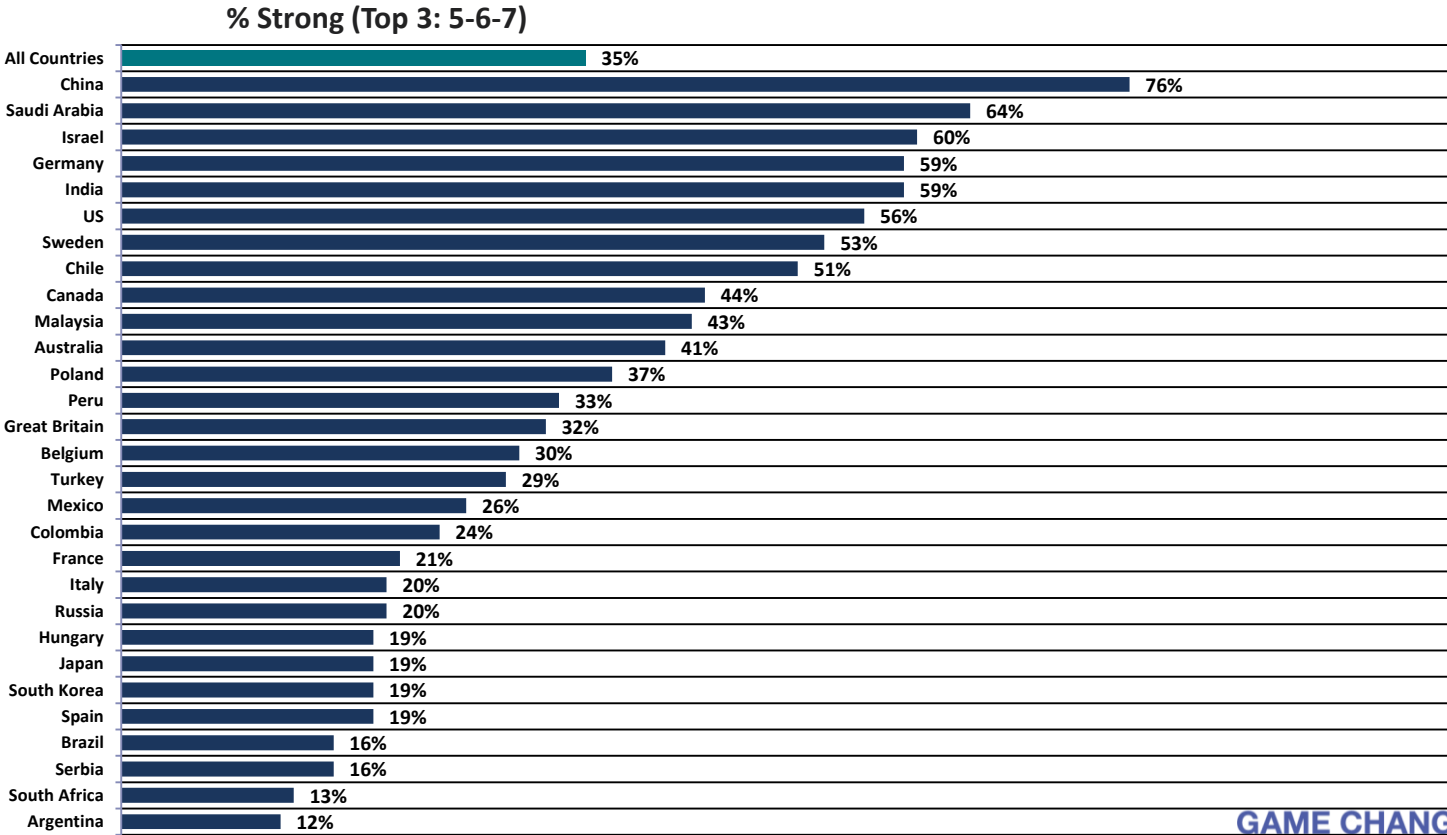
2 Assessing The Economy...

...in Their Local Area



Rate the current state of the economy in your local area using a scale from 1 to 7, where 7 means a very strong economy today and 1 means a very weak economy

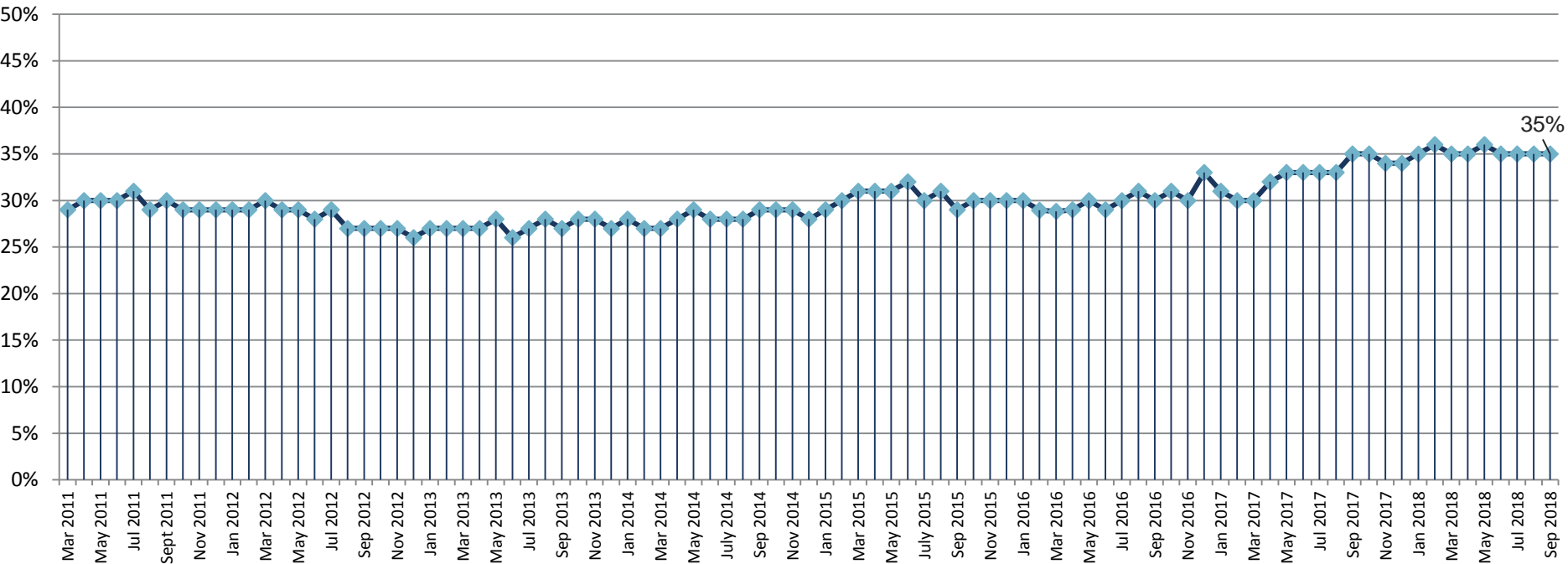
Citizen Consumers Who Say The Economy In Their Local Area is Strong...



Rate the current state of the economy in your local area using a scale from 1 to 7, where 7 means a very strong economy today and 1 means a very weak economy.

Citizen Consumers Who Say The Economy In Their Local Area is Strong

Total - % Strong (Top 3: 5-6-7)



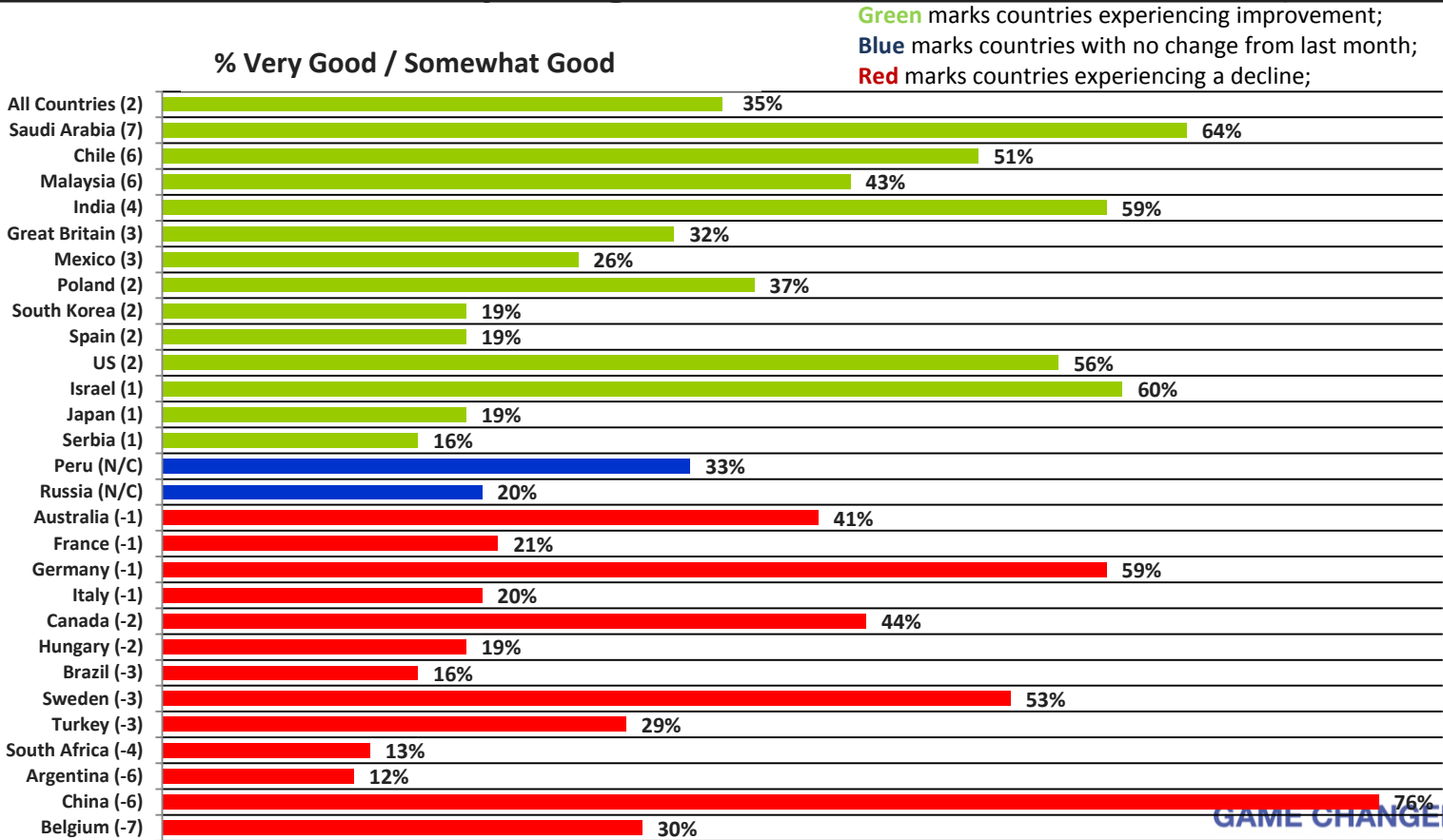
Rate the current state of the economy in your local area using a scale from 1 to 7, where 7 means a very strong economy today and 1 means a very weak economy.
% Strong (Top 3 5-6-7)

Citizen Consumers Who Say The Economy In Their Local Area is Strong

	Sep '15	Oct '15	Nov '15	Dec '15	Jan '16	Feb '16	Mar '16	Apr '16	May '16	Jun '16	Jul '16	Aug '16	Sep '16	Oct '16	Nov '16	Dec '16	Jan '17	Feb '17	Mar '17	Apr '17	May '17	Jun '17	Jul '17	Aug '17	Sep '17	Oct '17	Nov '17	Dec '17	Jan '18	Feb '18	Mar '18	Apr '18	May '18	Jun '18	Jul '18	Aug '18	Sep '18
Total	29%	30%	30%	30%	30%	29%	29%	29%	30%	29%	30%	31%	30%	31%	30%	33%	31%	30%	30%	32%	33%	33%	33%	33%	35%	35%	34%	34%	35%	36%	35%	35%	36%	35%	35%	35%	35%
Argentina	20%	22%	22%	18%	20%	20%	14%	16%	18%	17%	18%	15%	14%	16%	15%	21%	17%	19%	18%	19%	19%	19%	16%	18%	29%	29%	30%	23%	26%	20%	20%	23%	20%	19%	15%	18%	12%
Australia	35%	33%	36%	42%	32%	38%	34%	33%	39%	32%	37%	36%	34%	38%	38%	39%	38%	38%	37%	40%	40%	38%	39%	41%	41%	50%	40%	37%	43%	49%	45%	42%	41%	45%	44%	42%	41%
Belgium	24%	22%	26%	19%	19%	24%	26%	19%	21%	16%	20%	24%	22%	20%	20%	23%	20%	25%	23%	28%	31%	28%	30%	28%	30%	34%	32%	35%	37%	35%	33%	33%	36%	34%	33%	37%	30%
Brazil	12%	14%	18%	14%	16%	13%	10%	13%	14%	12%	14%	16%	13%	15%	14%	17%	14%	16%	17%	15%	16%	16%	16%	15%	19%	18%	16%	13%	19%	19%	18%	18%	21%	15%	19%	19%	16%
Canada	35%	31%	34%	33%	32%	21%	24%	33%	33%	34%	37%	36%	39%	34%	36%	42%	36%	34%	38%	39%	38%	41%	44%	46%	48%	44%	44%	41%	44%	46%	44%	45%	42%	46%	46%	46%	44%
Chile																													50%	49%	50%	53%	46%	50%	55%	45%	51%
China	49%	54%	57%	58%	54%	50%	54%	55%	54%	55%	57%	58%	58%	59%	61%	62%	58%	57%	60%	60%	67%	62%	65%	66%	71%	69%	73%	73%	73%	73%	74%	75%	72%	72%	68%	82%	76%
France	12%	15%	15%	17%	20%	16%	15%	13%	16%	15%	14%	14%	15%	13%	17%	18%	16%	16%	19%	16%	19%	21%	23%	22%	23%	21%	20%	23%	26%	28%	23%	25%	24%	23%	22%	22%	21%
Germany	56%	52%	51%	49%	56%	53%	52%	54%	51%	51%	55%	51%	55%	53%	56%	59%	54%	53%	59%	55%	58%	61%	62%	61%	59%	61%	58%	60%	58%	63%	58%	56%	58%	62%	62%	60%	59%
Great Britain	36%	33%	29%	29%	33%	32%	33%	24%	30%	27%	27%	28%	30%	32%	32%	30%	30%	31%	31%	34%	35%	34%	31%	29%	27%	29%	29%	26%	31%	31%	30%	32%	35%	28%	31%	29%	32%
Hungary	13%	14%	15%	15%	16%	15%	17%	17%	15%	16%	14%	15%	17%	17%	15%	19%	18%	18%	17%	18%	18%	22%	18%	26%	18%	24%	20%	18%	21%	21%	24%	22%	21%	24%	24%	21%	19%
India	56%	53%	55%	50%	61%	52%	55%	57%	57%	54%	55%	55%	53%	62%	60%	62%	60%	61%	56%	65%	61%	61%	62%	62%	62%	57%	54%	57%	60%	57%	59%	58%	55%	59%	58%	55%	59%
Israel	59%	56%	53%	59%	50%	58%	53%	59%	55%	56%	50%	58%	53%	55%	62%	53%	56%	55%	56%	60%	59%	56%	54%	56%	57%	56%	51%	56%	57%	60%	58%	66%	66%	55%	58%	59%	60%
Italy	13%	13%	13%	14%	13%	13%	13%	13%	14%	16%	12%	12%	13%	12%	14%	15%	15%	14%	15%	14%	16%	17%	16%	16%	17%	14%	16%	16%	15%	17%	16%	19%	15%	18%	21%	21%	20%
Japan	15%	16%	12%	13%	11%	15%	12%	12%	11%	13%	11%	11%	12%	13%	12%	17%	13%	14%	15%	13%	16%	18%	16%	16%	18%	17%	20%	18%	19%	18%	22%	17%	18%	18%	15%	18%	19%
Malaysia																													33%	32%	30%	28%	35%	43%	47%	37%	43%
Mexico	10%	19%	24%	16%	20%	9%	18%	16%	24%	12%	10%	19%	17%	13%	11%	17%	10%	10%	16%	17%	20%	16%	17%	22%	22%	22%	23%	22%	23%	22%	17%	20%	20%	22%	24%	23%	26%
Peru				25%	24%	20%	17%	22%	25%	28%	30%	32%	36%	35%	35%	42%	39%	29%	34%	35%	48%	36%	25%	37%	31%	35%	36%	33%	34%	30%	35%	28%	30%	28%	32%	33%	33%
Poland	21%	29%	20%	27%	26%	28%	19%	22%	25%	27%	26%	28%	28%	28%	23%	22%	26%	24%	27%	28%	31%	31%	35%	33%	34%	39%	36%	37%	38%	37%	37%	30%	38%	35%	35%	35%	37%
Russia	24%	25%	23%	24%	18%	24%	23%	20%	21%	17%	23%	20%	17%	19%	18%	24%	22%	23%	20%	22%	21%	22%	24%	18%	25%	25%	29%	20%	14%	23%	24%	15%	23%	22%	21%	20%	20%
Saudi Arabia	60%	65%	62%	66%	59%	61%	68%	59%	68%	64%	70%	62%	51%	57%	58%	56%	58%	56%	53%	57%	65%	63%	64%	50%	58%	58%	57%	63%	56%	61%	54%	62%	62%	63%	63%	57%	64%
Serbia																		8%	9%	9%	12%	13%	11%	10%	10%	10%	11%	13%	14%	13%	11%	13%	14%	13%	10%	15%	16%
South Africa	11%	16%	13%	12%	10%	10%	8%	9%	17%	11%	11%	11%	15%	16%	16%	13%	12%	14%	15%	14%	14%	14%	10%	13%	13%	11%	14%	12%	17%	22%	20%	23%	20%	16%	18%	17%	13%
South Korea	14%	13%	12%	11%	10%	13%	14%	12%	12%	10%	13%	15%	13%	14%	5%	15%	6%	7%	6%	10%	10%	19%	23%	20%	22%	20%	21%	24%	24%	24%	24%	24%	28%	20%	20%	17%	19%
Spain	15%	13%	15%	14%	15%	11%	13%	13%	12%	11%	14%	16%	12%	14%	14%	19%	15%	15%	15%	18%	16%	17%	21%	20%	21%	21%	22%	17%	18%	17%	19%	19%	18%	21%	18%	17%	19%
Sweden	58%	60%	50%	53%	59%	58%	57%	55%	57%	57%	51%	58%	48%	59%	54%	51%	56%	52%	55%	60%	60%	55%	56%	60%	60%	63%	63%	60%	62%	65%	60%	55%	57%	54%	47%	56%	53%
Turkey	23%	23%	33%	27%	39%	29%	33%	30%	31%	29%	29%	29%	36%	42%	33%	29%	30%	21%	28%	36%	27%	31%	31%	30%	33%	26%	31%	30%	28%	31%	32%	27%	28%	29%	34%	32%	29%
United States	35%	37%	36%	36%	36%	40%	40%	38%	40%	39%	39%	48%	43%	46%	39%	46%	43%	47%	46%	50%	49%	53%	46%	49%	53%	54%	49%	47%	53%	55%	54%	56%	58%	50%	53%	54%	56%

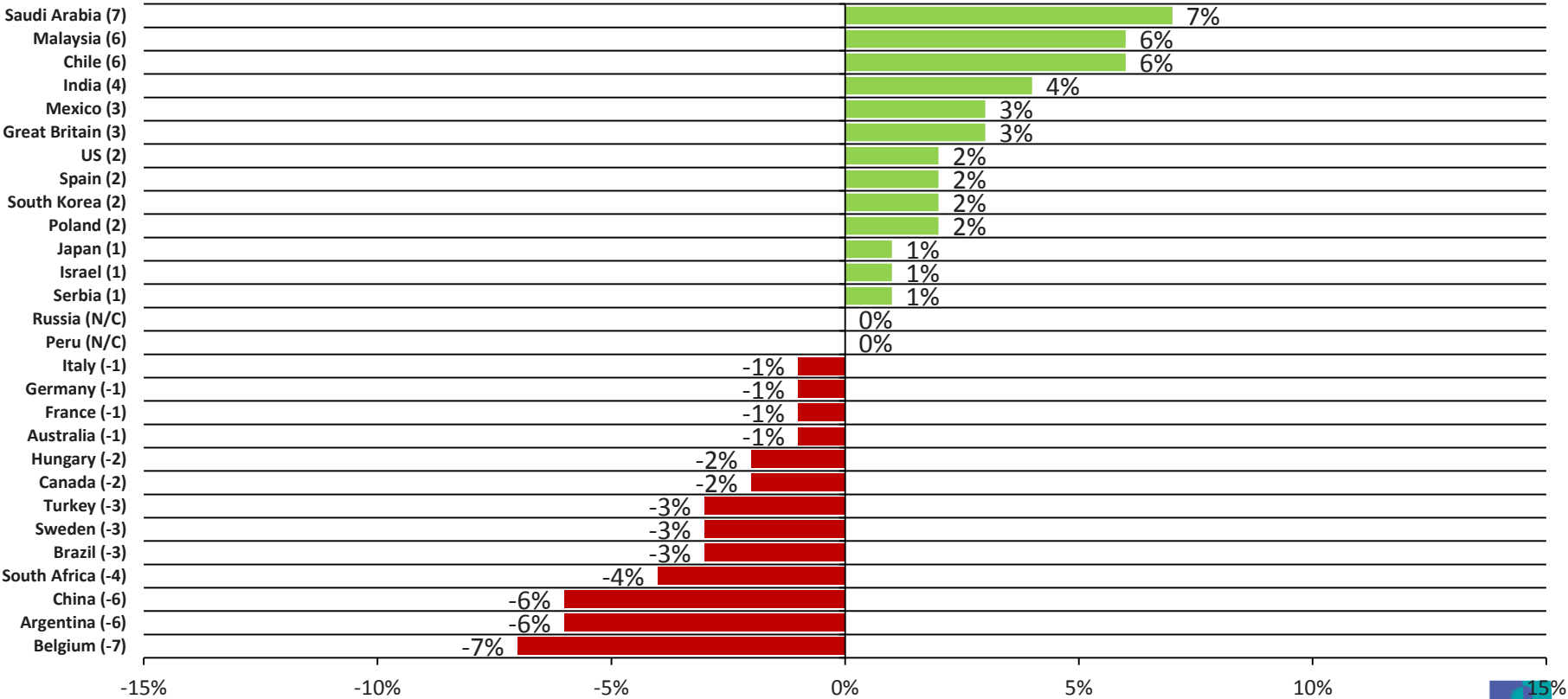
Rate the current state of the economy in your local area using a scale from 1 to 7, where 7 means a very strong economy today and 1 means a very weak economy...

Countries Ranked and Marked By Change In Assessment From Last Month (Left Column):



Rate the current state of the economy in your local area using a scale from 1 to 7, where 7 means a very strong economy today and 1 means a very weak economy...

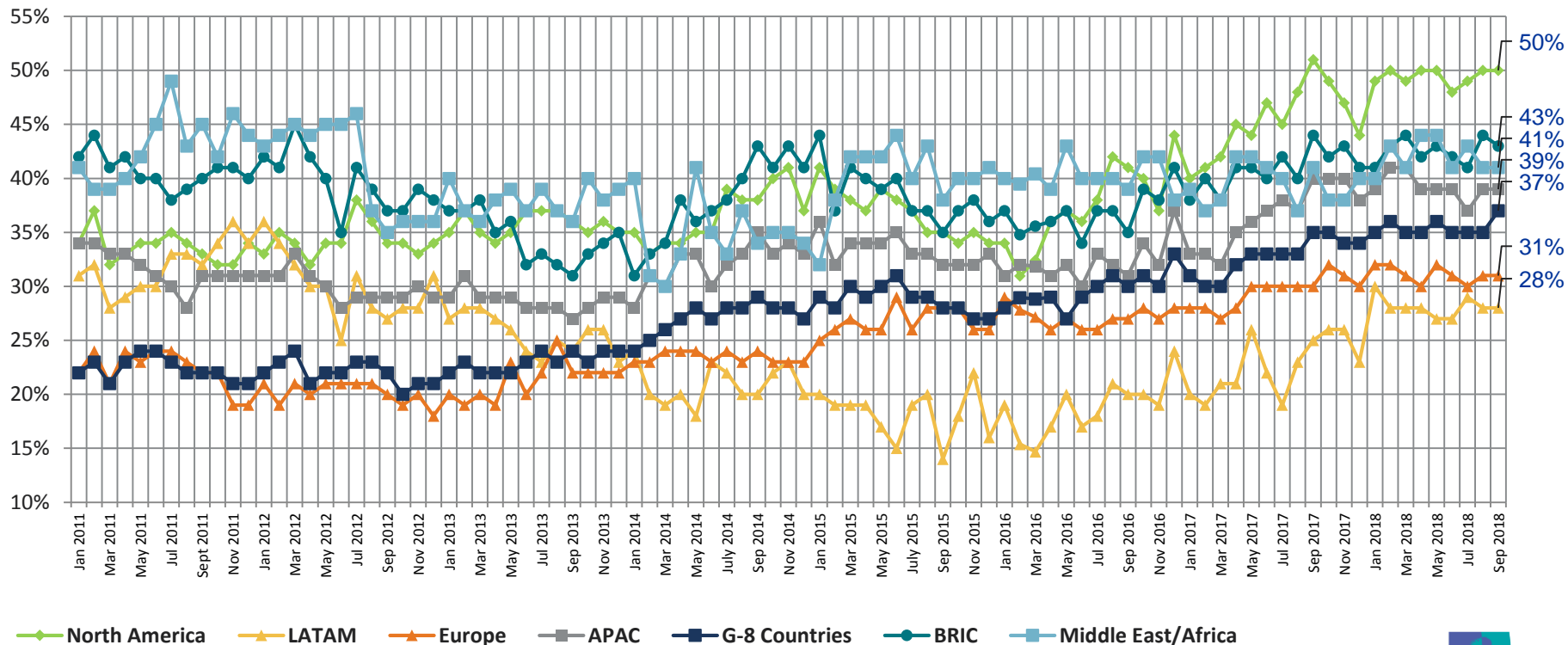
Countries Ranked by Net Improvement, Decline or No Change Compared to Last Month:



Rate the current state of the economy in your local area using a scale from 1 to 7, where 7 means a very strong economy today and 1 means a very weak economy.

All Regions - Assess the Strength of Their Local Economy

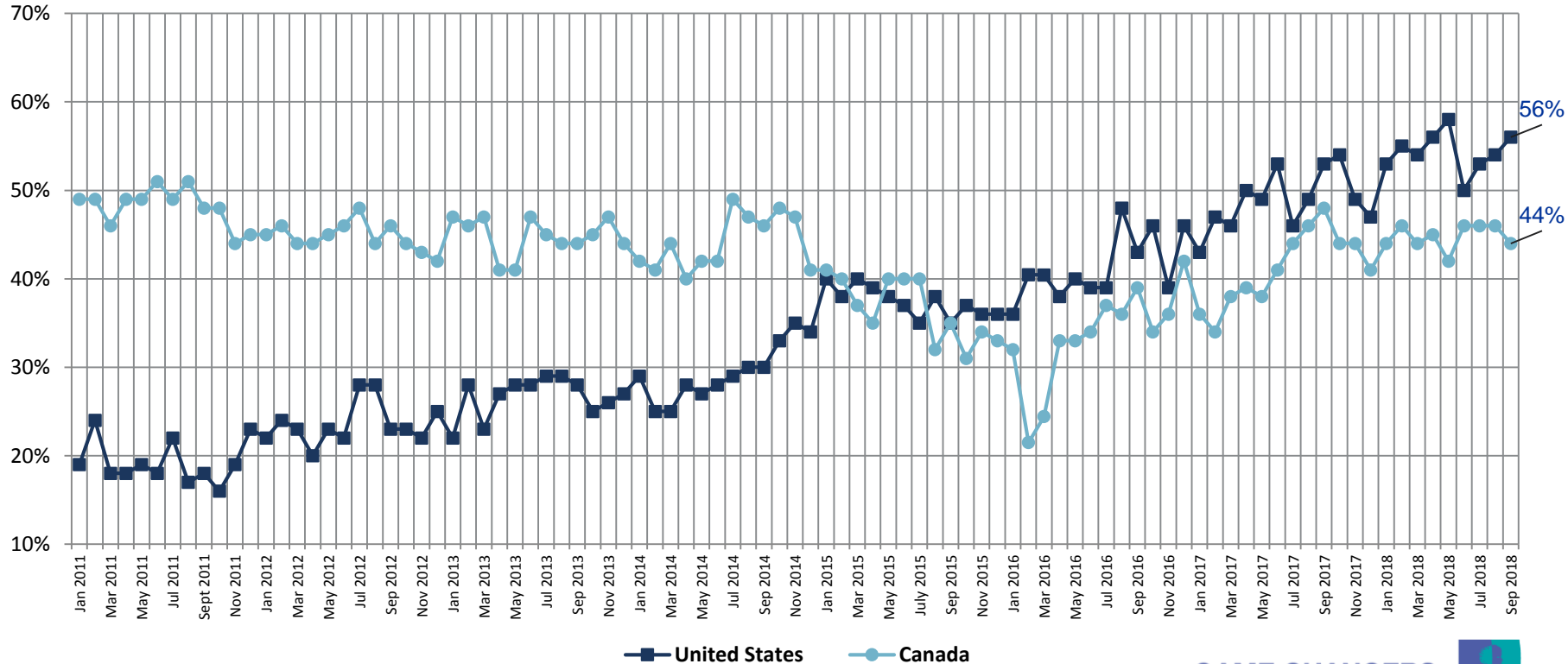
% Strong (Top 3 5-6-7)



Rate the current state of the economy in your local area using a scale from 1 to 7, where 7 means a very strong economy today and 1 means a very weak economy.

North American Countries - Assess the Strength of Their Local Economy

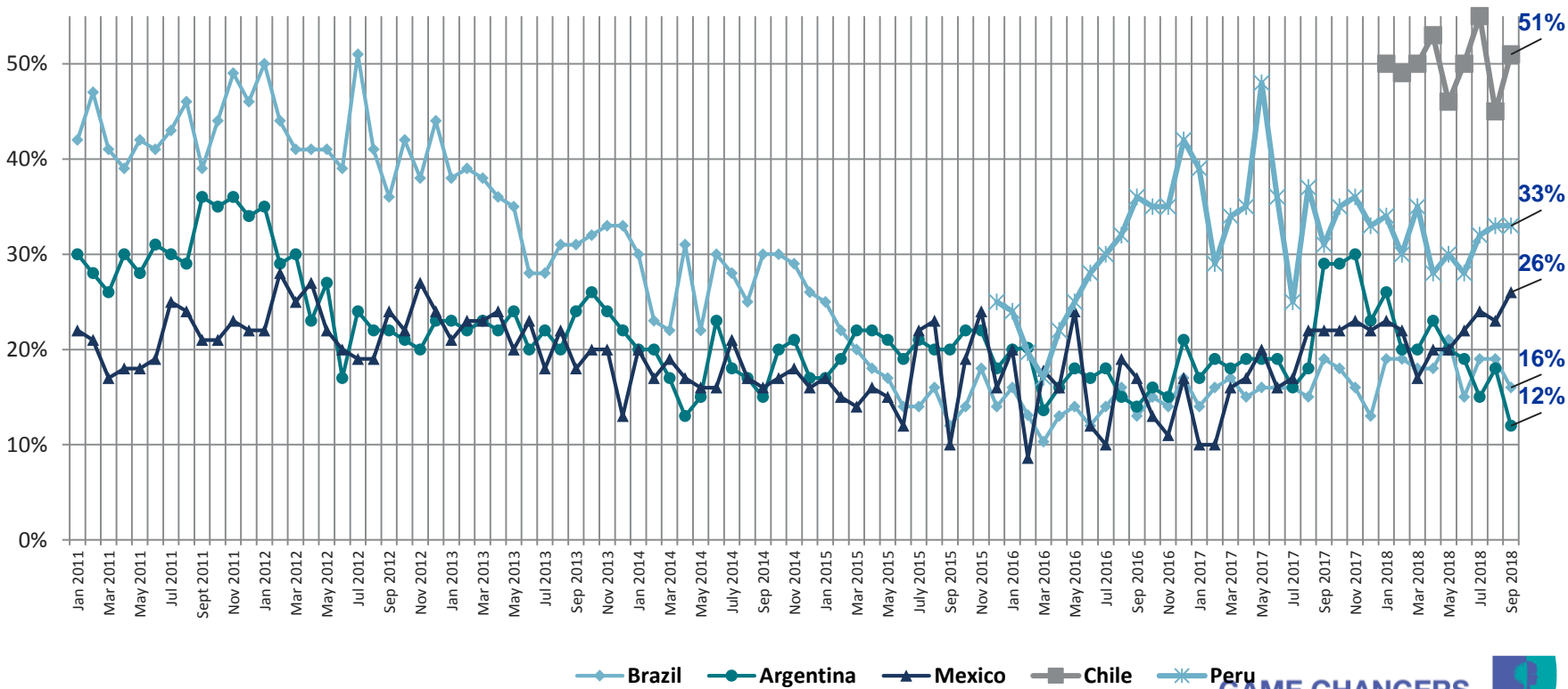
% Strong (Top 3 5-6-7)



Rate the current state of the economy in your local area using a scale from 1 to 7, where 7 means a very strong economy today and 1 means a very weak economy.

LATAM Countries - Assess the Strength of Their Local Economy

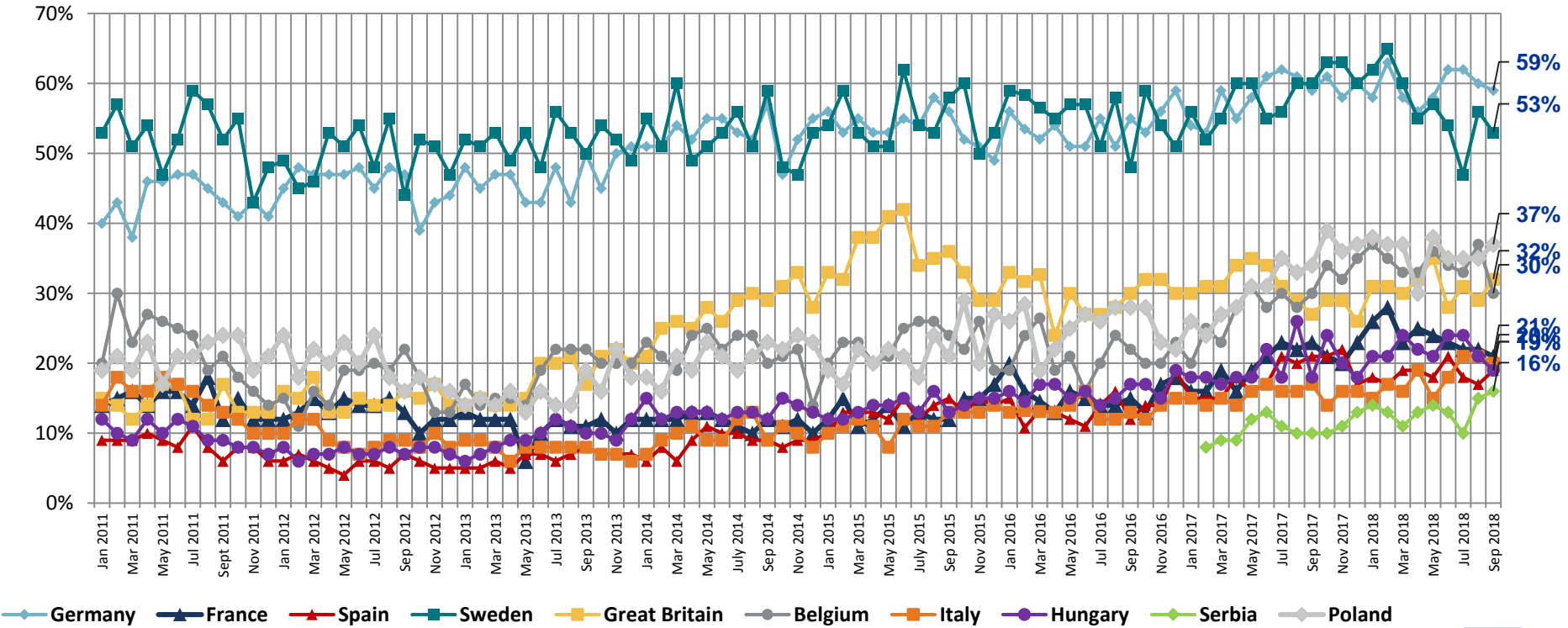
% Strong (Top 3 5-6-7)



Rate the current state of the economy in your local area using a scale from 1 to 7, where 7 means a very strong economy today and 1 means a very weak economy.

European Countries - Assess the Strength of Their Local Economy

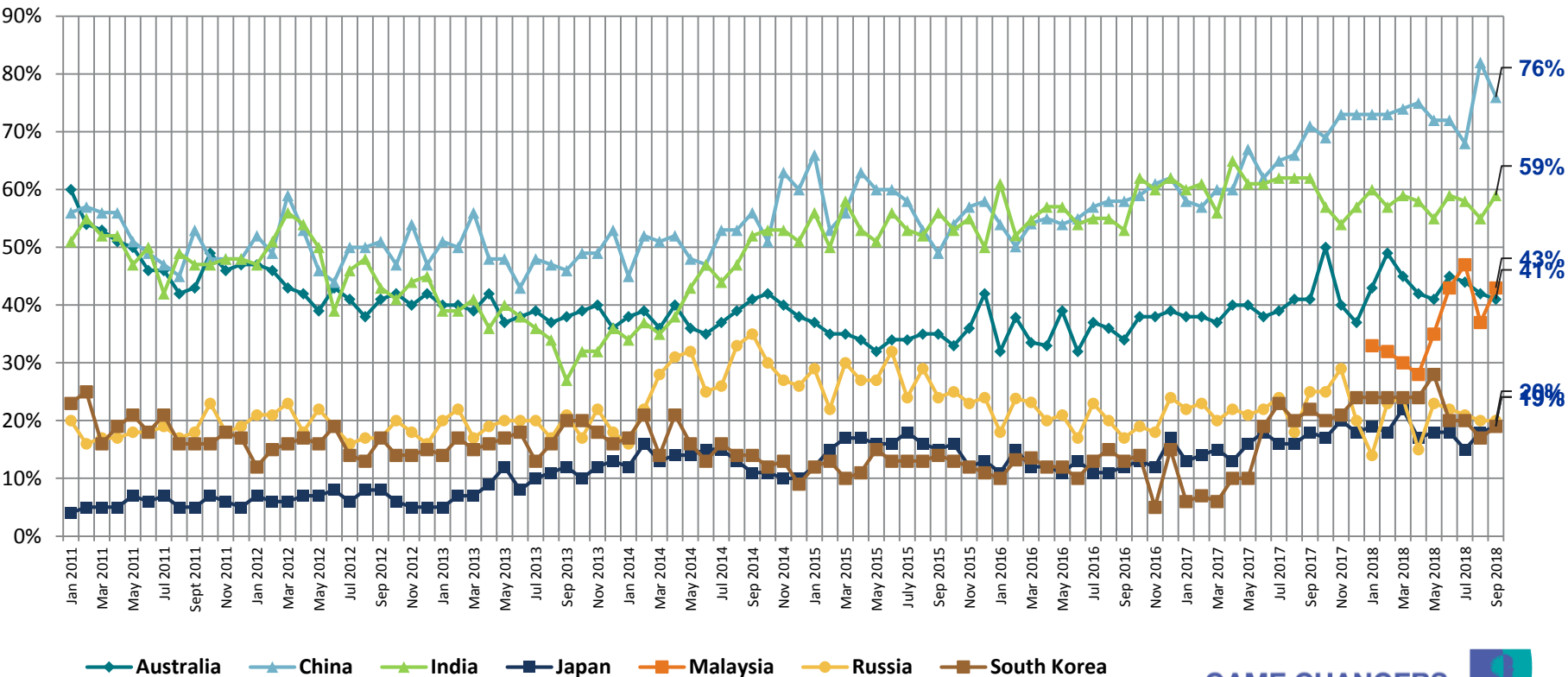
% Strong (Top 3 5-6-7)



Rate the current state of the economy in your local area using a scale from 1 to 7, where 7 means a very strong economy today and 1 means a very weak economy.

APAC Countries - Assess the Strength of Their Local Economy

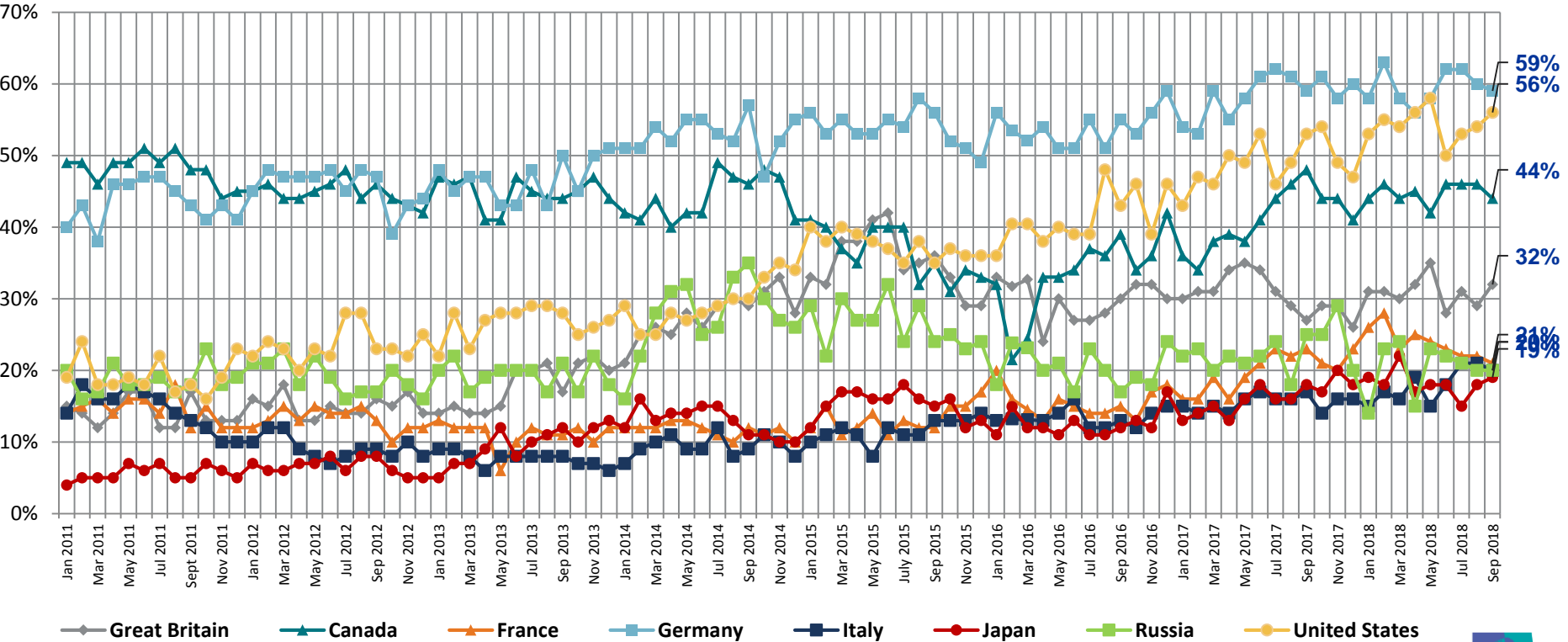
% Strong (Top 3 5-6-7)



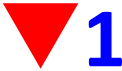
Rate the current state of the economy in your local area using a scale from 1 to 7, where 7 means a very strong economy today and 1 means a very weak economy.

G8 Countries - Assess the Strength of Their Local Economy

% Strong (Top 3 5-6-7)

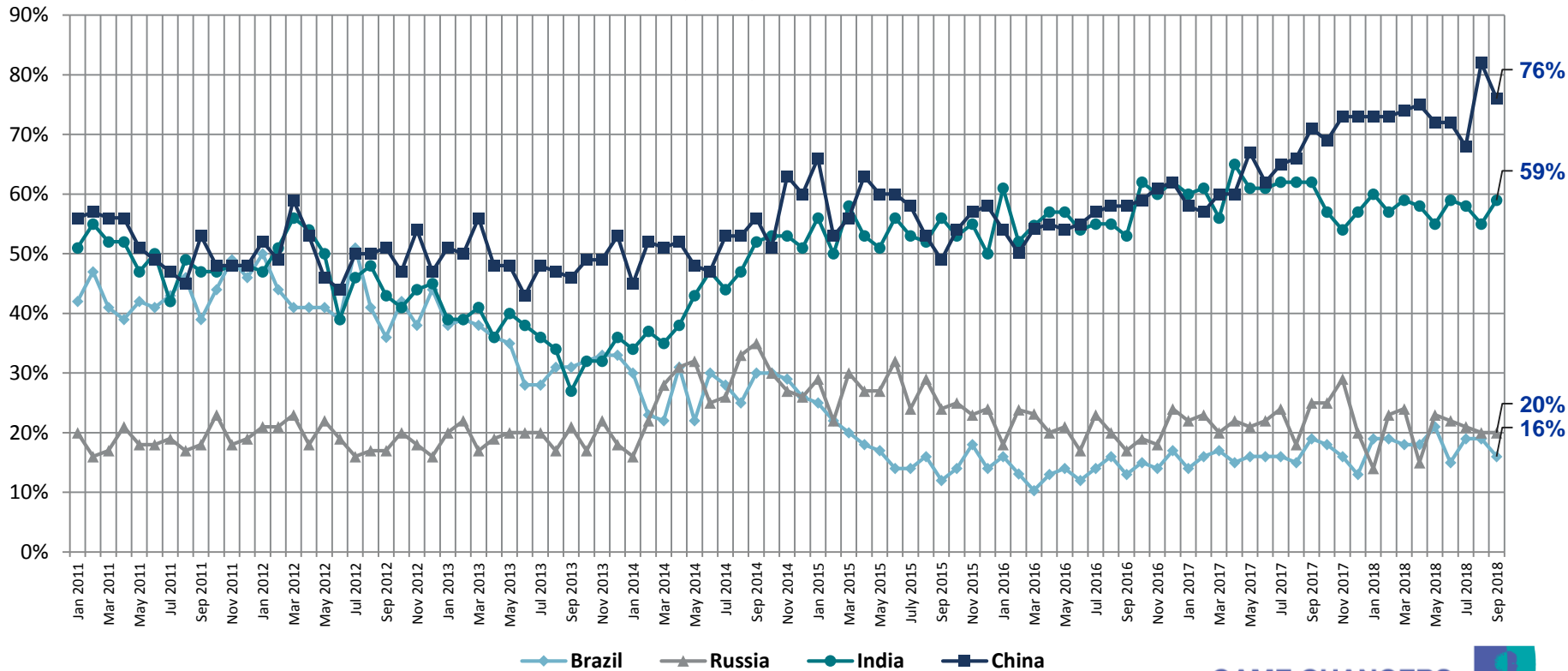


Rate the current state of the economy in your local area using a scale from 1 to 7, where 7 means a very strong economy today and 1 means a very weak economy.



BRIC Countries - Assess the Strength of Their Local Economy

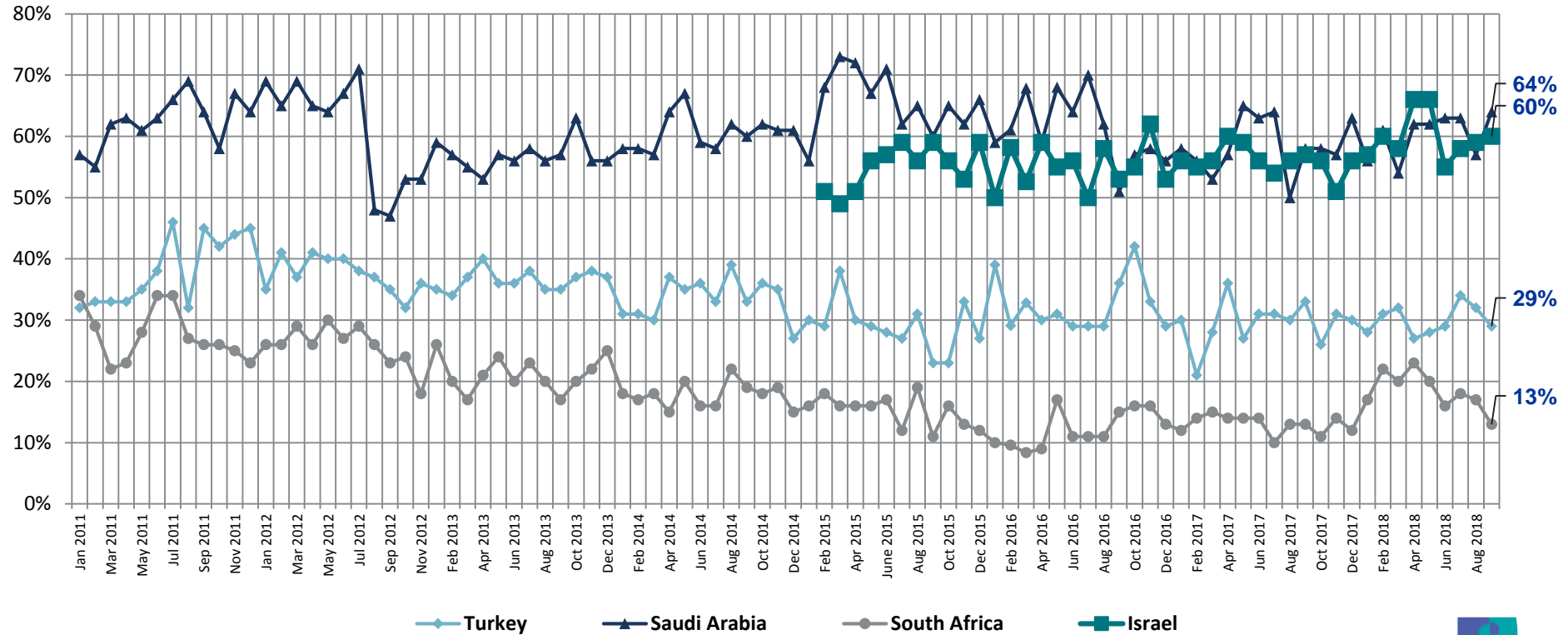
% Strong (Top 3 5-6-7)



Rate the current state of the economy in your local area using a scale from 1 to 7, where 7 means a very strong economy today and 1 means a very weak economy.

Middle East/African Countries - Assess the Strength of Their Local Economy

% Strong (Top 3 5-6-7)



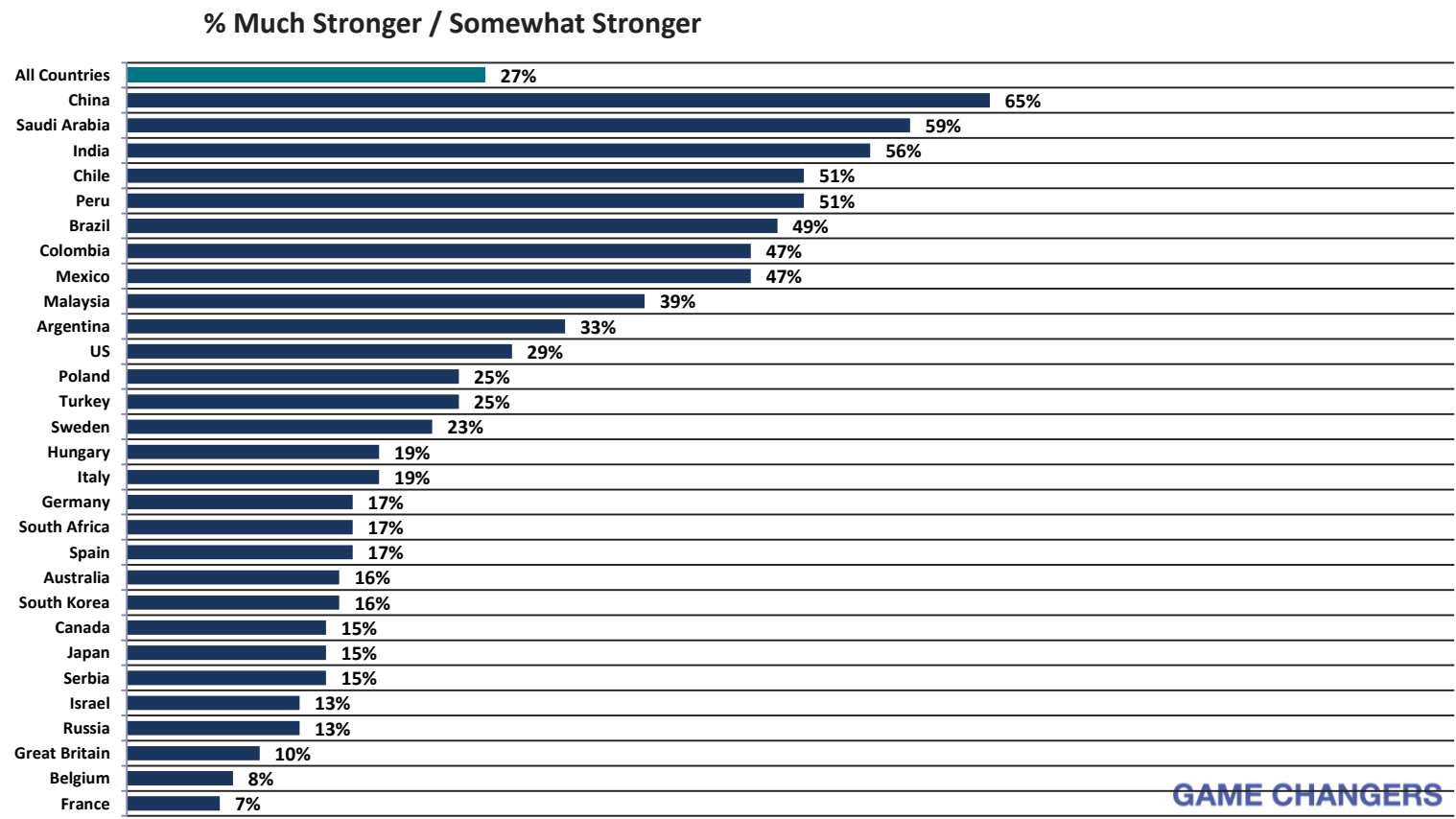
③ Assessing the Strength of The Local Economy...

...Six Months From Now



Looking ahead 6 months from now, do you expect the economy in your local area to be much stronger, somewhat stronger, about the same, somewhat weaker, or much weaker than it is now?

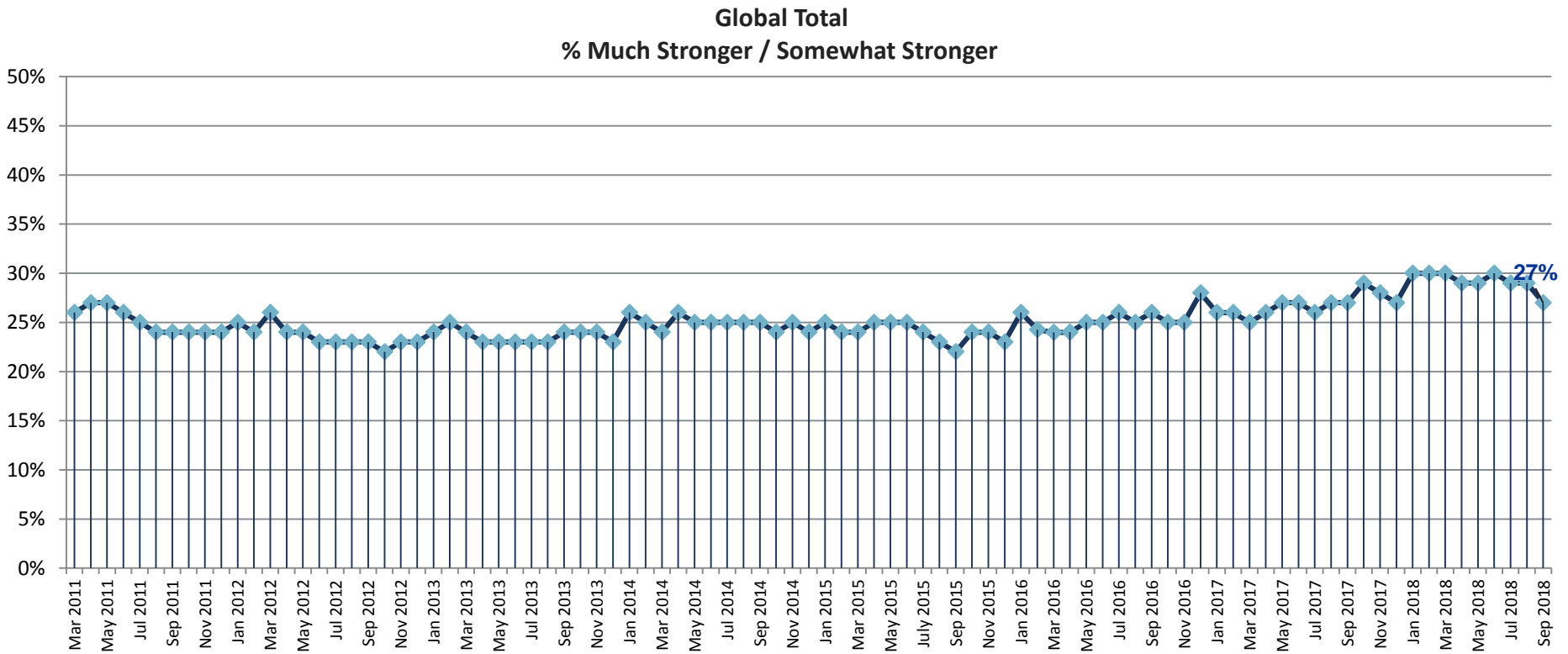
Citizen Consumers Who Say The Economy in the Local Area to be Stronger in The Next Six Months...



Looking ahead 6 months from now, do you expect the economy in your local area to be much stronger, somewhat stronger, about the same, somewhat weaker, or much weaker than it is now?



Citizen Consumers Who Say The Economy in the Local Area to be Stronger in The Next Six Months...



Looking ahead six months from now, do you expect the economy in your local area to be much stronger, somewhat stronger, about the same, somewhat weaker, or much weaker than it is now?
% Much Stronger / Somewhat Stronger

Citizen Consumers Who Say The Economy in the Local Area to be Stronger in The Next Six Months...

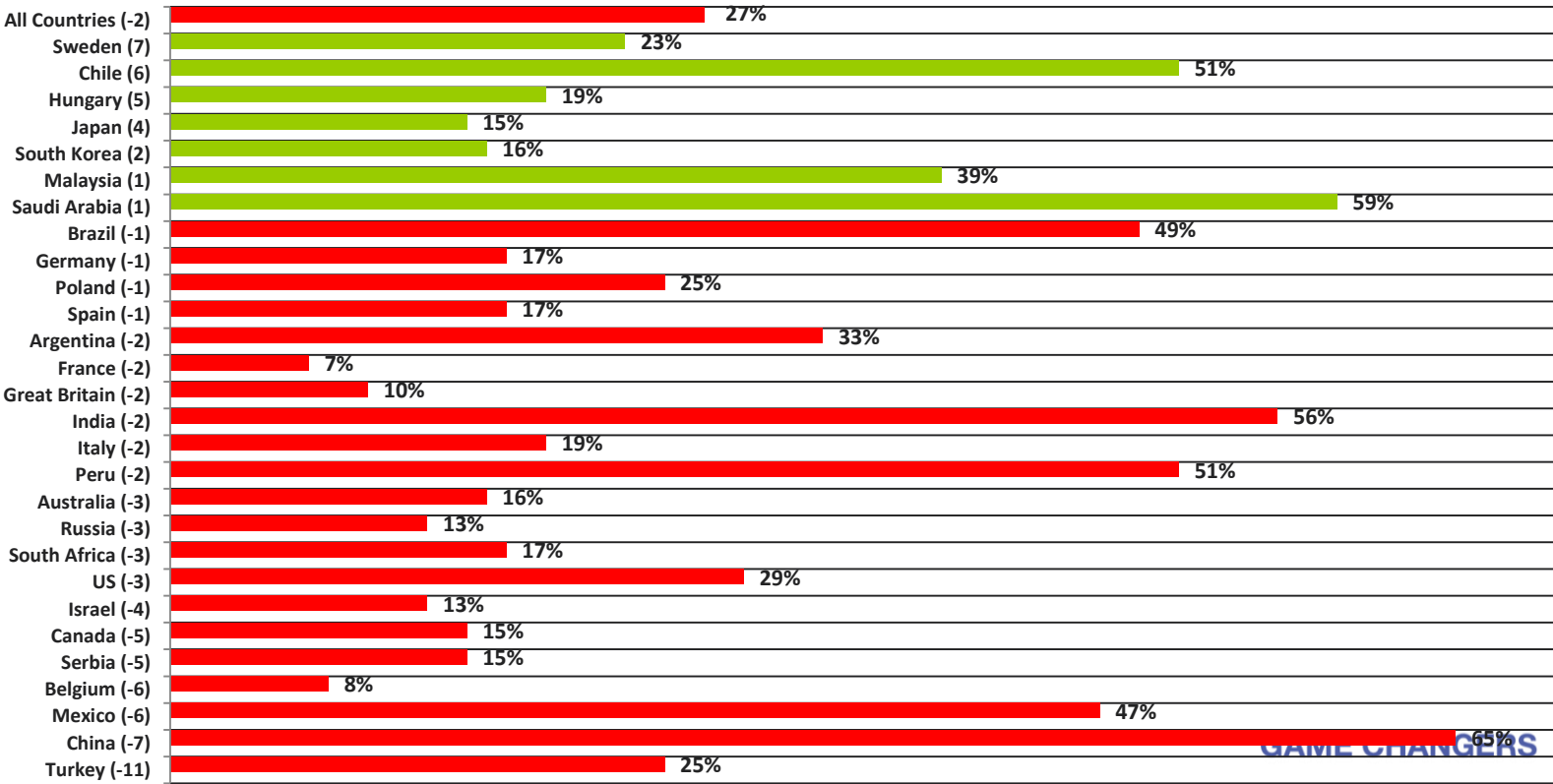
	Sep '15	Oct '15	Nov '15	Dec '15	Jan '16	Feb '16	Mar '16	Apr '16	May '16	Jun '16	Jul '16	Aug '16	Sep '16	Oct '16	Nov '16	Dec '16	Jan '17	Feb '17	Mar '17	Apr '17	May '17	Jun '17	Jul '17	Aug '17	Sep '17	Oct '17	Nov '17	Dec '17	Jan '18	Feb '18	Mar '18	Apr '18	May '18	Jun '18	Jul '18	Aug '18	Sep '18
Total	22%	24%	24%	23%	26%	24%	24%	24%	25%	25%	26%	25%	26%	25%	25%	28%	26%	26%	25%	26%	27%	27%	26%	27%	27%	29%	28%	27%	30%	30%	30%	29%	29%	30%	29%	29%	27%
Argentina	35%	42%	61%	58%	65%	56%	49%	53%	59%	57%	54%	52%	53%	50%	50%	52%	45%	46%	42%	49%	51%	44%	39%	43%	51%	54%	51%	44%	44%	42%	39%	42%	37%	38%	32%	35%	33%
Australia	16%	20%	17%	19%	15%	14%	12%	14%	18%	17%	18%	16%	14%	14%	15%	15%	17%	16%	16%	17%	17%	16%	14%	19%	16%	27%	21%	17%	20%	22%	16%	19%	18%	18%	19%	16%	
Belgium	11%	9%	12%	9%	10%	10%	12%	7%	11%	8%	8%	12%	8%	6%	8%	9%	12%	11%	10%	13%	12%	10%	15%	15%	14%	14%	18%	22%	21%	15%	12%	15%	12%	13%	11%	14%	8%
Brazil	52%	52%	51%	53%	53%	53%	53%	54%	54%	55%	57%	56%	59%	59%	59%	54%	59%	62%	58%	55%	48%	55%	52%	50%	49%	57%	51%	53%	53%	58%	54%	54%	54%	46%	49%	50%	49%
Canada	16%	18%	24%	18%	15%	17%	16%	19%	20%	17%	18%	16%	17%	15%	16%	27%	18%	16%	18%	18%	18%	17%	18%	21%	20%	22%	23%	18%	22%	24%	18%	18%	18%	20%	18%	20%	15%
Chile																													61%	60%	56%	59%	55%	55%	52%	45%	51%
China	47%	44%	52%	49%	48%	41%	47%	49%	44%	49%	52%	50%	52%	53%	49%	56%	53%	52%	57%	53%	56%	54%	48%	58%	60%	59%	64%	62%	61%	57%	59%	57%	59%	59%	54%	72%	65%
France	4%	6%	5%	6%	11%	5%	5%	6%	8%	5%	6%	5%	5%	5%	6%	11%	8%	8%	7%	6%	9%	12%	12%	13%	11%	14%	10%	13%	16%	16%	13%	11%	11%	9%	9%	9%	7%
Germany	16%	17%	15%	16%	17%	15%	12%	15%	13%	16%	18%	13%	15%	13%	15%	26%	19%	17%	17%	19%	19%	19%	17%	17%	21%	26%	24%	20%	25%	24%	16%	19%	18%	16%	16%	18%	17%
Great Britain	19%	17%	14%	15%	16%	14%	12%	10%	12%	10%	12%	14%	12%	12%	12%	12%	13%	15%	11%	12%	14%	12%	11%	11%	10%	13%	10%	13%	12%	12%	14%	12%	19%	12%	13%	12%	10%
Hungary	8%	9%	12%	12%	11%	11%	11%	12%	9%	11%	12%	11%	13%	11%	9%	13%	15%	13%	11%	10%	15%	14%	12%	15%	14%	14%	12%	8%	14%	17%	18%	31%	15%	16%	16%	14%	19%
India	62%	63%	58%	56%	69%	57%	65%	63%	59%	61%	62%	60%	60%	62%	66%	67%	65%	67%	62%	69%	70%	66%	64%	65%	65%	62%	56%	63%	62%	60%	62%	58%	57%	56%	58%	58%	56%
Israel	14%	10%	11%	11%	15%	13%	13%	9%	14%	17%	12%	14%	18%	13%	13%	10%	9%	17%	16%	12%	16%	15%	15%	16%	12%	10%	15%	14%	18%	17%	18%	19%	17%	19%	15%	17%	13%
Italy	11%	14%	13%	14%	14%	12%	11%	11%	9%	12%	9%	8%	10%	9%	9%	10%	10%	8%	11%	8%	8%	12%	9%	9%	7%	11%	12%	8%	10%	13%	15%	15%	10%	21%	25%	21%	19%
Japan	12%	12%	11%	13%	11%	11%	9%	10%	7%	9%	9%	8%	10%	11%	9%	14%	9%	11%	11%	9%	11%	12%	11%	10%	11%	13%	15%	14%	16%	12%	14%	13%	12%	12%	11%	11%	15%
Malaysia																													25%	23%	26%	23%	26%	57%	51%	38%	39%
Mexico	22%	41%	32%	24%	32%	31%	31%	26%	27%	30%	27%	28%	32%	27%	22%	25%	20%	20%	27%	26%	28%	27%	23%	29%	29%	31%	30%	26%	31%	35%	28%	33%	35%	37%	47%	53%	47%
Peru				47%	49%	53%	48%	47%	58%	58%	67%	69%	65%	60%	64%	58%	52%	46%	54%	48%	53%	54%	53%	57%	51%	52%	49%	49%	49%	50%	46%	53%	52%	47%	42%	53%	51%
Poland	16%	15%	14%	17%	13%	16%	14%	18%	16%	18%	18%	18%	15%	17%	14%	13%	18%	16%	21%	20%	23%	23%	21%	24%	29%	24%	27%	23%	31%	24%	25%	22%	27%	26%	24%	26%	25%
Russia	21%	20%	24%	21%	19%	31%	24%	21%	22%	20%	18%	16%	18%	17%	19%	21%	22%	22%	19%	18%	19%	19%	18%	19%	19%	30%	25%	17%	16%	19%	20%	24%	19%	20%	16%	16%	13%
Saudi Arabia	48%	55%	49%	53%	51%	51%	52%	51%	62%	58%	64%	52%	47%	48%	55%	55%	55%	51%	49%	52%	64%	55%	52%	45%	52%	55%	56%	57%	53%	55%	53%	57%	61%	61%	56%	58%	59%
Serbia																		11%	15%	20%	18%	15%	19%	16%	15%	15%	16%	16%	17%	18%	19%	19%	20%	22%	22%	20%	15%
South Africa	11%	12%	15%	11%	13%	13%	13%	15%	18%	16%	16%	16%	20%	22%	13%	16%	13%	19%	16%	16%	13%	14%	14%	16%	12%	14%	11%	13%	32%	38%	47%	30%	25%	22%	20%	20%	17%
South Korea	14%	11%	12%	10%	8%	10%	10%	10%	12%	10%	9%	10%	9%	9%	5%	17%	8%	10%	10%	13%	13%	37%	32%	30%	24%	22%	24%	33%	25%	24%	24%	24%	33%	27%	22%	14%	16%
Spain	22%	21%	21%	22%	23%	19%	19%	19%	14%	17%	16%	18%	15%	15%	18%	26%	20%	19%	18%	20%	23%	21%	18%	21%	18%	22%	20%	19%	17%	19%	17%	21%	17%	27%	22%	18%	17%
Sweden	11%	12%	8%	9%	9%	5%	10%	11%	14%	12%	16%	11%	15%	12%	11%	18%	20%	10%	16%	22%	27%	17%	14%	27%	24%	27%	31%	16%	24%	25%	28%	14%	16%	20%	13%	16%	23%
Turkey	23%	20%	32%	22%	35%	26%	24%	27%	24%	25%	26%	31%	32%	38%	32%	31%	31%	25%	27%	34%	31%	26%	30%	32%	31%	25%	27%	28%	27%	30%	33%	25%	29%	33%	33%	36%	25%
United States	24%	24%	25%	26%	23%	25%	26%	27%	29%	29%	31%	33%	31%	31%	25%	38%	38%	42%	40%	39%	37%	39%	34%	31%	36%	34%	33%	33%	35%	39%	34%	34%	37%	28%	31%	32%	29%

Looking ahead six months from now, do you expect the economy in your local area to be much stronger, somewhat stronger, about the same, somewhat weaker, or much weaker than it is now?

Countries Ranked and Marked By Change In Assessment From Last Month (Left Column):

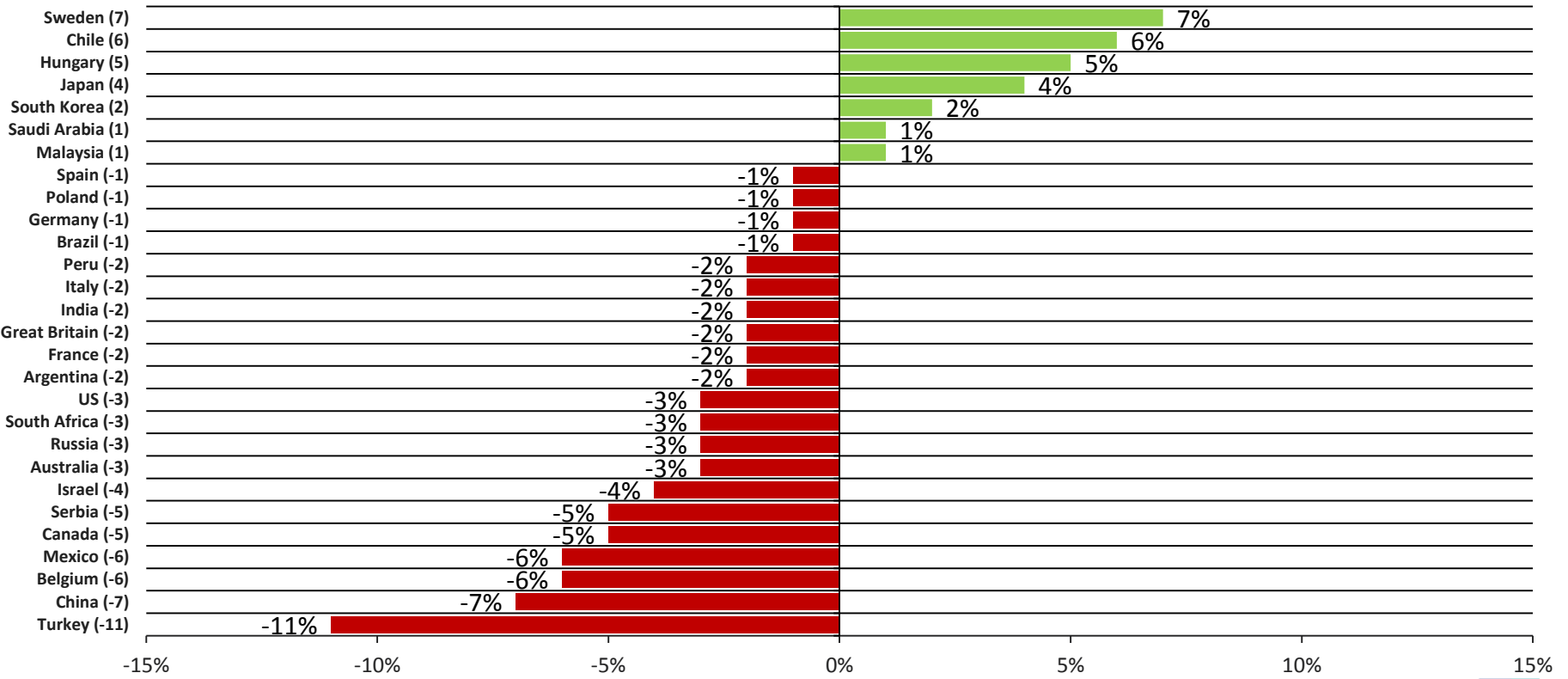
% Very Good / Somewhat Good

Green marks countries experiencing improvement;
Blue marks countries with no change from last month;
Red marks countries experiencing a decline;



Looking ahead six months from now, do you expect the economy in your local area to be much stronger, somewhat stronger, about the same, somewhat weaker, or much weaker than it is now?

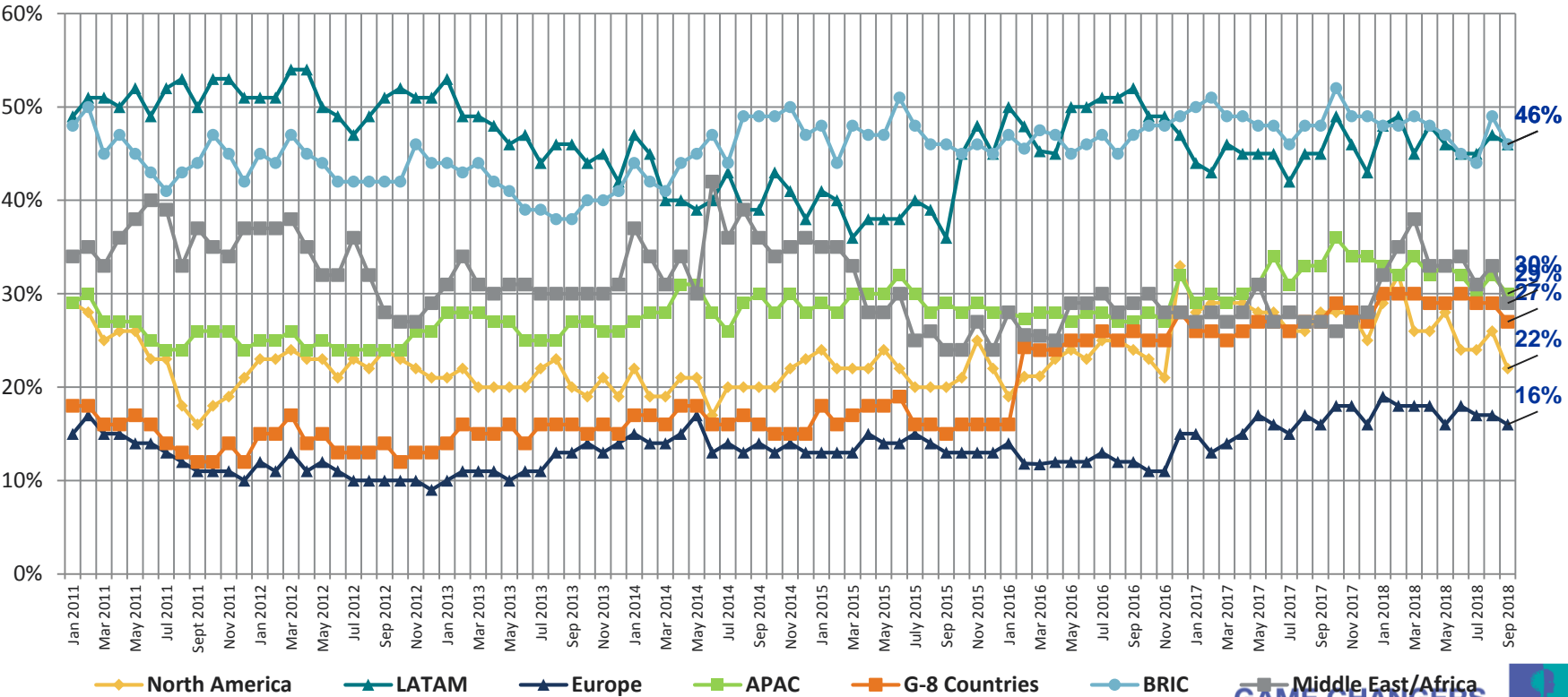
Countries Ranked by Net Improvement, Decline or No Change Compared to Last Month:



Looking ahead 6 months from now, do you expect the economy in your local area to be much stronger, somewhat stronger, about the same, somewhat weaker, or much weaker than it is now?

All Regions - Citizen Consumers Who Say The Economy in the Local Area to be Stronger in The Next Six Months

% Much Stronger / Somewhat Stronger

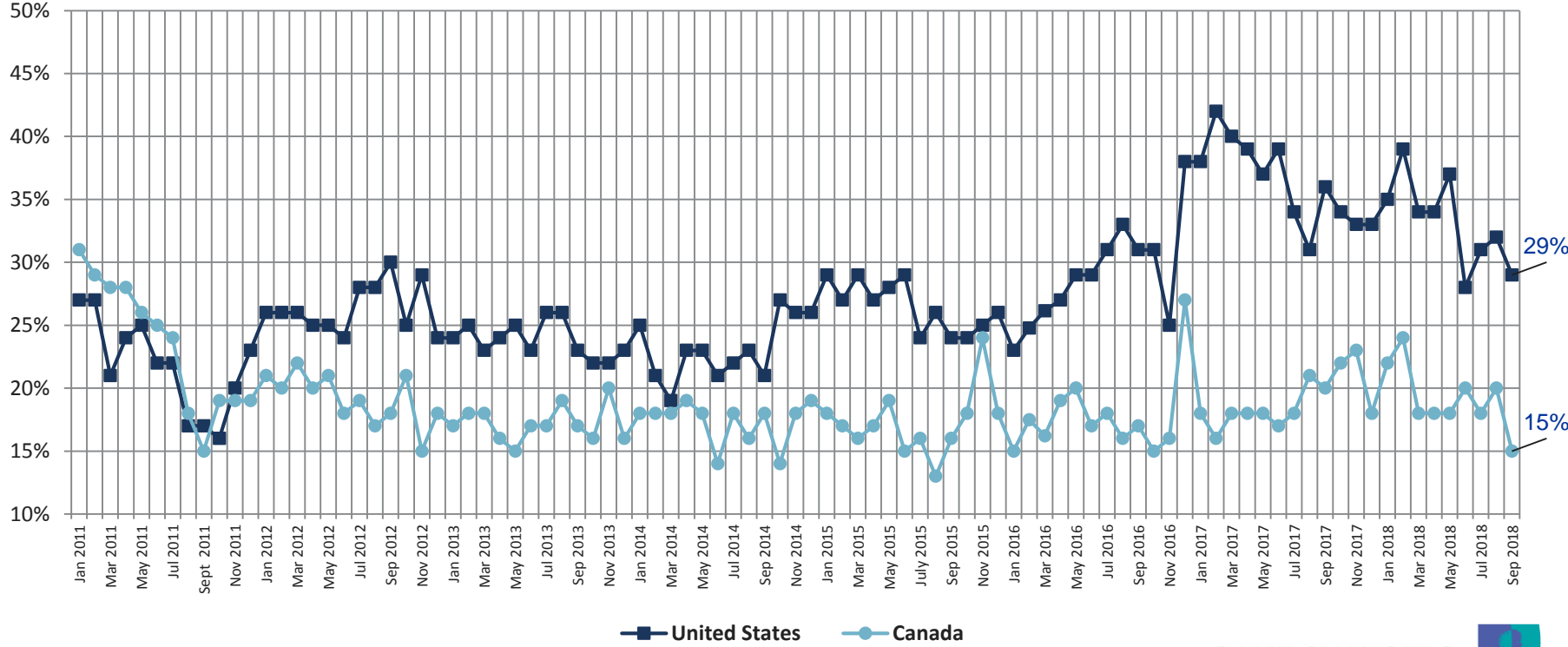


Looking ahead 6 months from now, do you expect the economy in your local area to be much stronger, somewhat stronger, about the same, somewhat weaker, or much weaker than it is now?



North American Countries - Citizen Consumers Who Say The Economy in the Local Area to be Stronger in The Next Six Months

% Much Stronger / Somewhat Stronger

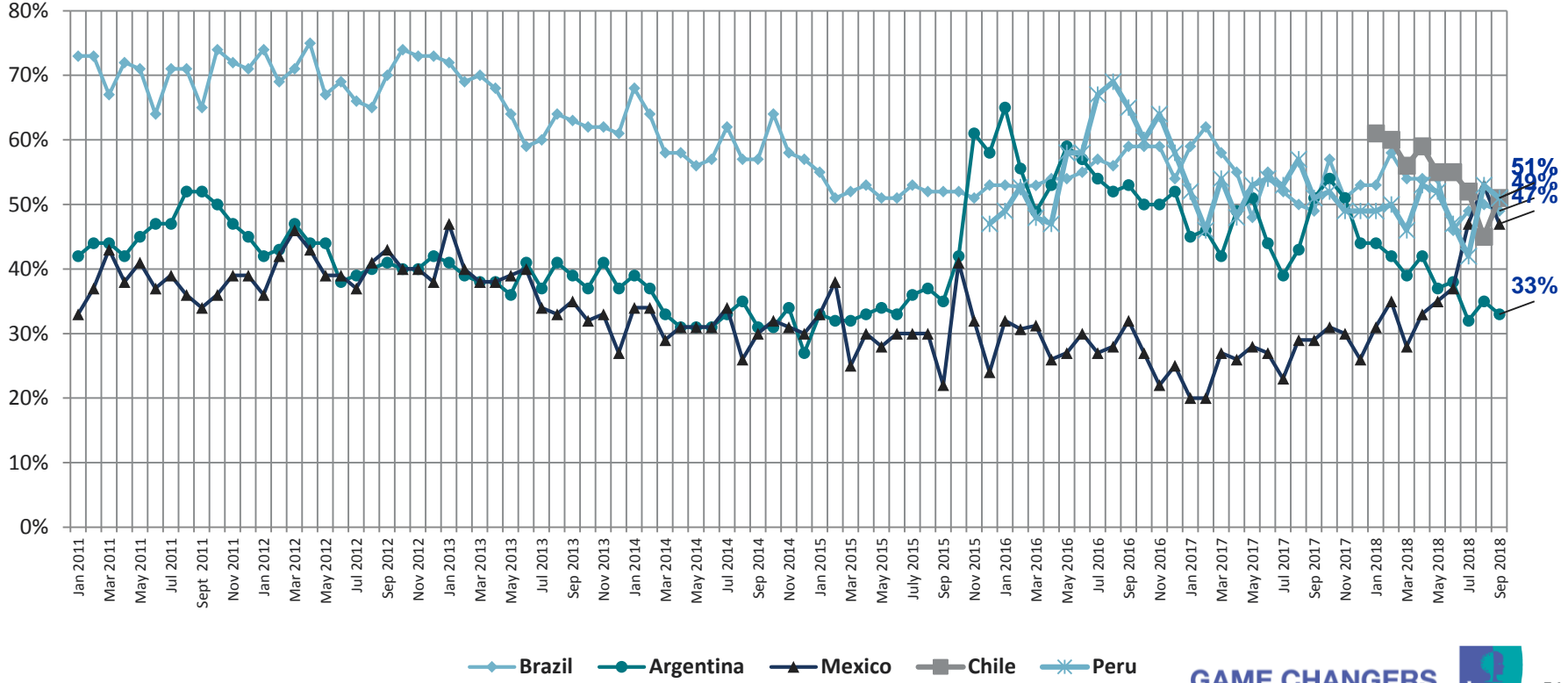


Looking ahead 6 months from now, do you expect the economy in your local area to be much stronger, somewhat stronger, about the same, somewhat weaker, or much weaker than it is now?



LATAM Countries - Citizen Consumers Who Say The Economy in the Local Area to be Stronger in The Next Six Months

% Much Stronger / Somewhat Stronger

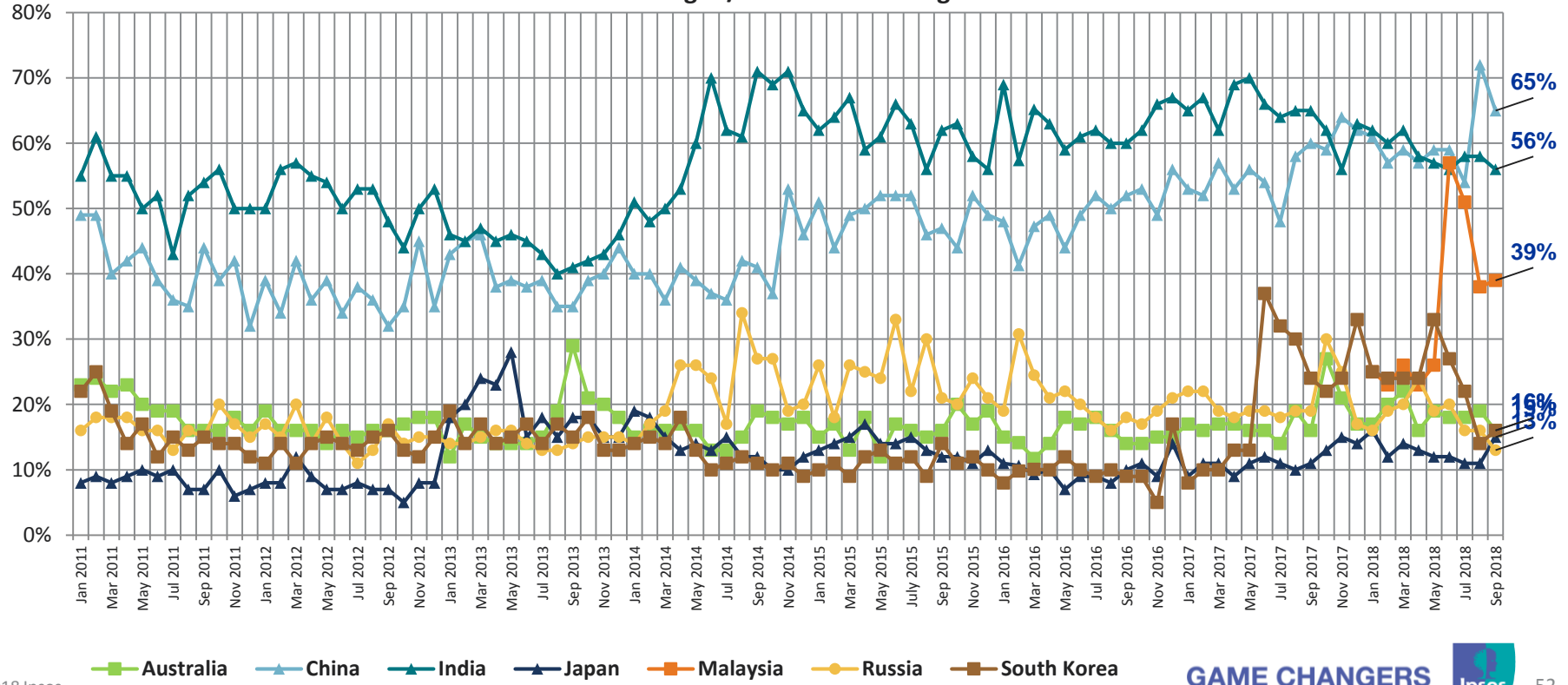


Looking ahead 6 months from now, do you expect the economy in your local area to be much stronger, somewhat stronger, about the same, somewhat weaker, or much weaker than it is now?



APAC Countries - Citizen Consumers Who Say The Economy in the Local Area to be Stronger in The Next Six Months

% Much Stronger / Somewhat Stronger

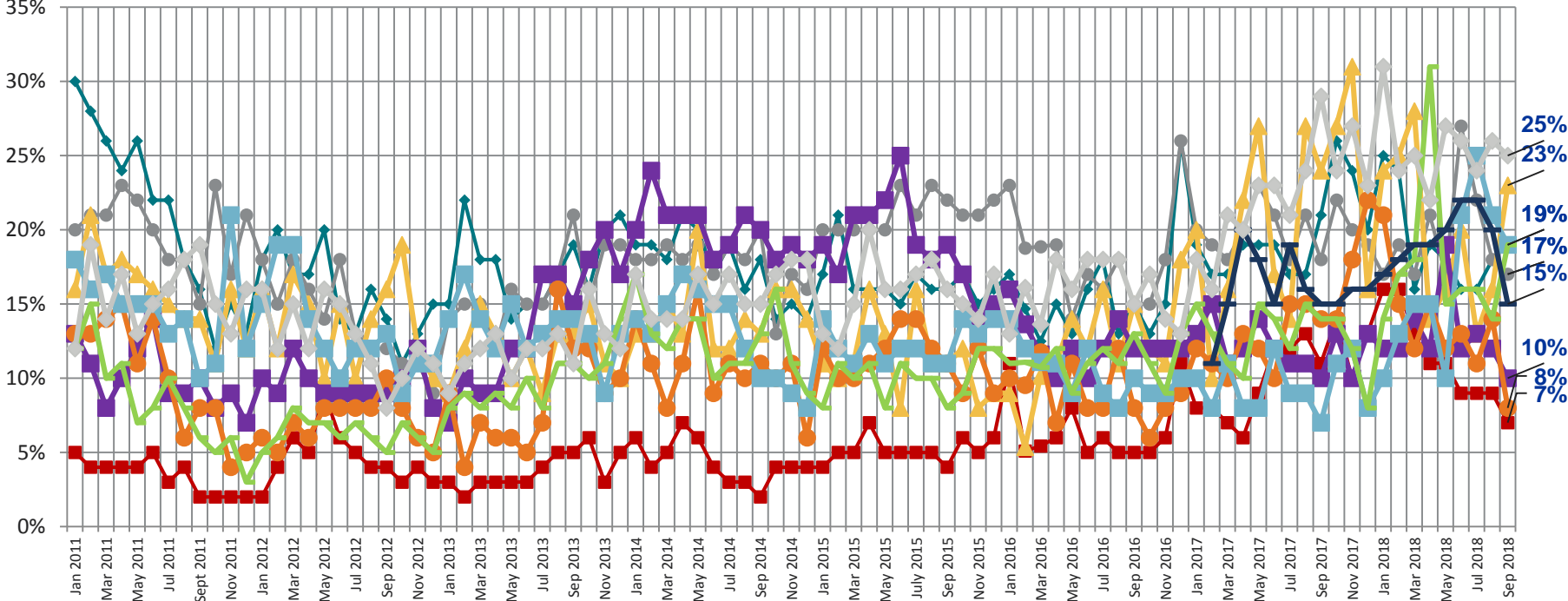


Looking ahead 6 months from now, do you expect the economy in your local area to be much stronger, somewhat stronger, about the same, somewhat weaker, or much weaker than it is now?



European Countries - Citizen Consumers Who Say The Economy in the Local Area to be Stronger in The Next Six Months

% Much Stronger / Somewhat Stronger



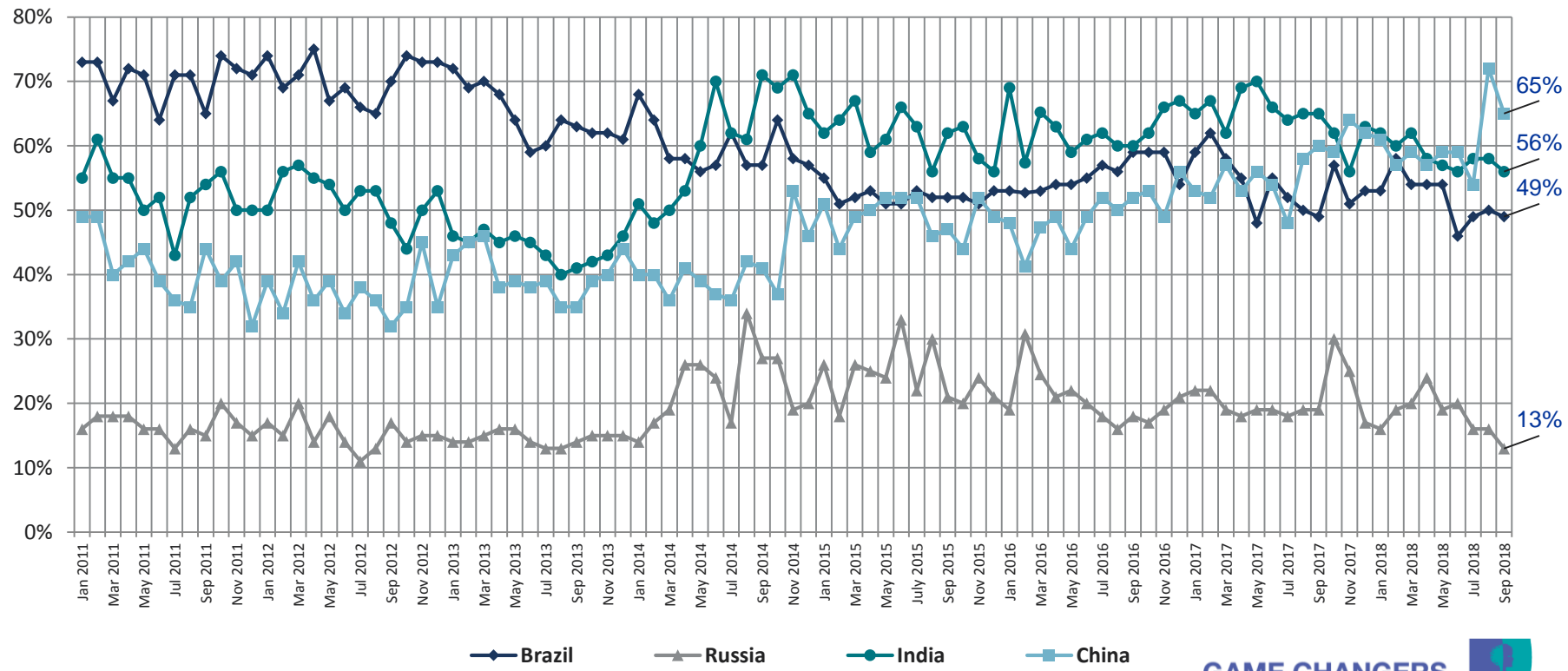
Germany France Spain Sweden Great Britain Belgium Italy Hungary Serbia Poland

Looking ahead 6 months from now, do you expect the economy in your local area to be much stronger, somewhat stronger, about the same, somewhat weaker, or much weaker than it is now?



BRIC Countries - Citizen Consumers Who Say The Economy in the Local Area to be Stronger in The Next Six Months

% Much Stronger / Somewhat Stronger

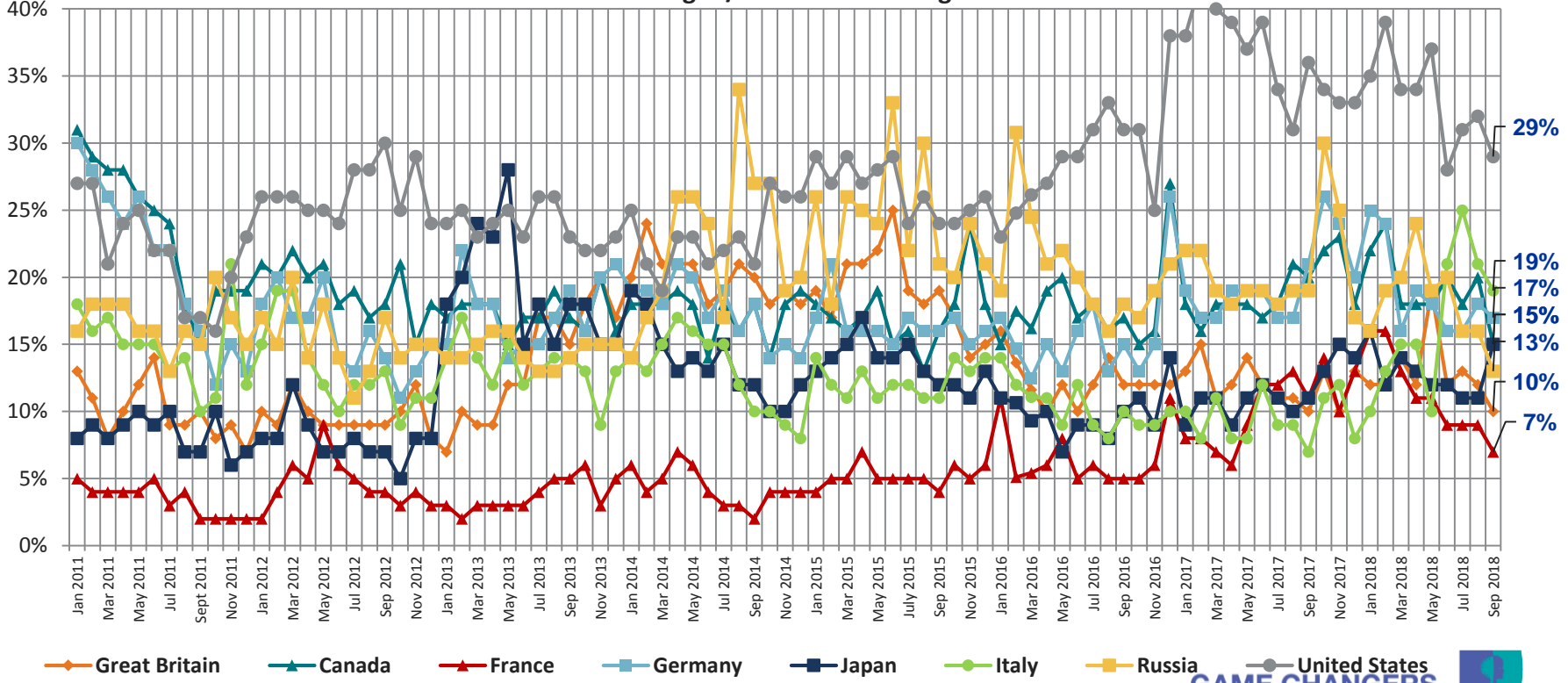


Looking ahead 6 months from now, do you expect the economy in your local area to be much stronger, somewhat stronger, about the same, somewhat weaker, or much weaker than it is now?

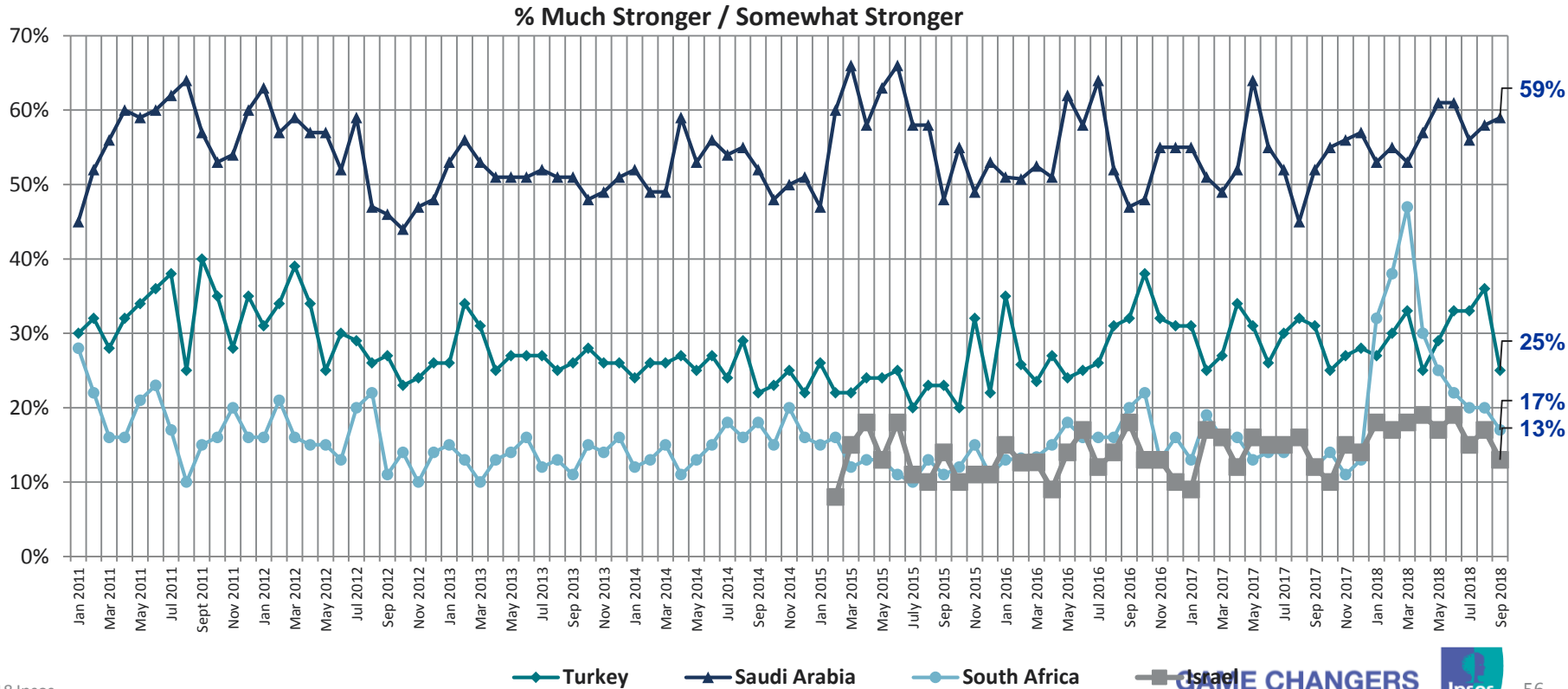


G8 Countries - Citizen Consumers Who Say The Economy in the Local Area to be Stronger in The Next Six Months

% Much Stronger / Somewhat Stronger



Middle East/African Countries - Citizen Consumers Who Say The Economy in the Local Area to be Stronger in The Next Six Months



About Ipsos

- Ipsos is an independent market research company controlled and managed by research professionals. Founded in France in 1975, Ipsos has grown into a worldwide research group with a strong presence in all key markets. Ipsos ranks third in the global research industry.
- With offices in 87 countries, Ipsos delivers insightful expertise across five research specializations: brand, advertising and media, customer loyalty, marketing, public affairs research, and survey management.
- Ipsos researchers assess market potential and interpret market trends. They develop and build brands. They help clients build long-term relationships with their customers. They test advertising and study audience responses to various media and they measure public opinion around the globe.
- Ipsos has been listed on the Paris Stock Exchange since 1999 and generated global revenues €1,669.5 (\$2,218.4 million) in 2014.
- Visit www.ipsos.com to learn more about Ipsos' offerings and capabilities.

For information about this and other *Global @dvisor* products contact <http://www.ipsosglobaladvisor.com/> or:

- **Julia Clark**
Senior Vice President
Ipsos Public Affairs +1 (312) 526-4919
julia.clark@ipsos.com
- **Nik Samoylov**
Director
Ipsos Public Affairs +1 (416) 572-4471
nik.samoylov@ipsos.com
- The Ipsos *Global @dvisor* Syndicate Study is a monthly, online survey of consumer citizens in 28 countries and produces syndicated reports and studies specifically tailored to the needs of corporations, advertising and PR agencies, and governments. For information contact:
- **Chris Deeney**
Senior Vice President and Managing Director
Ipsos Public Affairs +1 (312) 526-4088
chris.deeney@ipsos.com
- Visit www.ipsos.com for information about all of our products and services.

Copyright Ipsos 2018. All rights reserved. The contents of this publication constitute the sole and exclusive property of Ipsos.