

Global Advisor

The Economic Pulse of the World

Citizens in 28 Countries Assess the Current State of their Country's Economy for a Total Global Perspective

These are the findings of the *Global Advisor Wave 122 (G@122)*, an Ipsos survey conducted between February 22nd and March 8th, 2019.

- The survey instrument is conducted monthly in 28 countries around the world via the Ipsos Online Panel system. The countries reporting herein are Argentina, Australia, Belgium, Brazil, Canada, China, Chile, France, Great Britain, Germany, Hungary, India, Israel, Italy, Japan, Malaysia, Mexico, Peru, Poland, Russia, Saudi Arabia, Serbia, South Africa, South Korea, Spain, Sweden, Turkey and the United States of America.
- For the results of the survey presented herein, an international sample of 19,519, adults aged 18-74 in the US, Israel and Canada, and age 16-74 in all other countries, were interviewed. Approximately 1000+ individuals participated on a country by country basis via the Ipsos Online Panel with the exception of Argentina, Belgium, Chile, Hungary, Israel, Malaysia, Mexico, Peru, Poland, Russia, Saudi Arabia, Serbia, South Africa, South Korea, Sweden and Turkey, where each have a sample approximately 500+. The precision of Ipsos online polls are calculated using a credibility interval with a poll of 1,000 accurate to +/- 3.1 percentage points and of 500 accurate to +/- 4.5 percentage points. For more information on the Ipsos use of credibility intervals, please visit the Ipsos website.
- **The results for this wave include extra countries:** Colombia. While these have been added, the total average scores for each section have been calculated without taking these countries into account in order to keep the core 28 country tracking scores consistent with previous waves. Each country has 500+ completed. We occasionally add extra countries to the report in order to either benchmark them or track them on a less frequent basis (perhaps trimester or quarterly) for regional insight.
- 15 of the 28 countries surveyed online generate nationally representative samples in their countries (Argentina, Australia, Belgium, Canada, France, Germany, Great Britain, Hungary, Italy, Japan, Poland, South Korea, Spain, Sweden, and United States).
- Brazil, China, Chile, India, Israel, Malaysia, Mexico, Peru, Russia, Saudi Arabia, Serbia, South Africa and Turkey produce a national sample that is more urban & educated, and with higher incomes than their fellow citizens. We refer to these respondents as “Upper Deck Consumer Citizens”. They are not nationally representative of their country.

ANALYTIC COMPONENTS...

There are three analytic components that make up the findings of this monthly Economic Pulse report. Each question is tracked and analyzed from questions dealing with:

① The currently perceived macroeconomic state of the respondent's country:

- Thinking about our economic situation, how would you describe the current economic situation in [insert country]? Is it very good, somewhat good, somewhat bad or very bad?

② The currently perceived state of the local economy:

- Rate the current state of the economy in your local area using a scale from 1 to 7, where 7 means a very strong economy today and 1 means a very weak economy.

③ A six month outlook for the local economy:

- Looking ahead six months from now, do you expect the economy in your local area to be much stronger, somewhat stronger, about the same, somewhat weaker, or much weaker than it is now?



THE WORLD at a GLANCE

Global Average of National Economic Assessment Unchanged: 46%

- The average global economic assessment of national economies surveyed in 28 countries remains unchanged this wave with 46% of global citizens rating their national economies as 'good'.
- China (91%) takes over the top spot in the national economic assessment category, followed by Saudi Arabia (90%), India (80%), Germany (77%), Australia (63%), Sweden (63%), the United States (63%), Chile (62%), Peru (57%), Canada (57%), Israel (55%), Malaysia (50%) and Poland (48%). Argentina (11%) has the lowest spot in this assessment this month again, followed by South Africa (14%), Italy (17%), South Korea (18%), France (21%), Turkey (22%), Spain (25%), Brazil (26%), Japan (29%) Russia (31%) and Hungary (36%).
- *Countries with the greatest improvements in this wave:* China (91%, +13 pts.), Chile (62%, +10 pts.), Belgium (46%, +5 pts.), India (80%, +4 pts.), the United States (63%, +1 pts.), Sweden (63%, +1 pts.), Hungary (36%, +1 pts.), Great Britain (42%, +1 pts.), and France (21%, +1 pts.).
- *Countries with the greatest declines:* South Africa (14%, -10 pts.), Peru (57%, -9 pts.), Mexico (41%, -8 pts.), Turkey (22%, -5 pts.), Germany (77%, -4 pts.), Malaysia (50%, -3 pts.), Serbia (41%, -3 pts.), Argentina (11%, -2 pts.), Canada (57%, -2 pts.) and Poland (48%, -2 pts.).

Global Average of Local Economic Assessment (35%) Unchanged

- When asked to assess their local economy, over one third (35%) of those surveyed in 28 countries agree that the state of the current economy in their local area is 'good'. The local economic assessment remains unchanged since last sounding.
- China (77%) is the top country in the local assessment category this month, followed by Saudi Arabia (66%), India (60%), Israel (58%), Sweden (56%), Chile (55%), Germany (54%), the United States (52%), Australia (43%) and Canada (42%). Argentina (13%) is the lowest ranked country this month again, followed by South Africa (15%), Japan (15%), Serbia (19%), Turkey (20%), Italy (20%), Spain (21%), South Korea (21%), Russia (21%), Hungary (24%), France (24%) and Mexico (27%).
- *Countries with the greatest improvements in this wave:* China (77%, +12 pts.), India (60%, +8 pts.), Chile (55%, +6 pts.), Great Britain (33%, +4 pts.), France (24%, +4 pts.), South Korea (21%, +4 pts.), Sweden (56%, +3 pts.), Serbia (19%, +3 pts.), Belgium (28%, +2 pts.), and Spain (21%, +2 pts.).
- *Countries with the greatest declines in this wave:* Malaysia (31%, -6 pts.), Mexico (27%, -5 pts.), Turkey (20%, -4 pts.), Australia (43%, -3 pts.), the United States (52%, -2 pts.), Germany (54%, -2 pts.), Israel (58%, -2 pts.) and Saudi Arabia (66%, -2 pts.).

Global Average of Future Outlook for Local Economy (28%) Up One Point

- The future outlook is up one point since last sounding, with nearly one third (28%) of global citizens surveyed in 28 countries expecting their local economy to be stronger six months from now.
- Saudi Arabia (74%) is at the top of this assessment category this month again, followed by China (73%), Brazil (59%), India (59%), Mexico (52%), Chile (49%), Peru (47%), Argentina (34%), Malaysia (27%), the United States (26%), Sweden (23%) and Poland (21%). Despite gaining one point, France (7%) has the lowest future outlook score this month once again, followed by Belgium (8%), Japan (9%), Great Britain (11%), Russia (13%), Germany (15%), South Korea (15%), Italy (16%), Hungary (16%) and Canada (16%).
- *Countries with the greatest improvements in this wave:* China (73%, +22 pts.), Chile (49%, +9 pts.), Sweden (23%, +7 pts.), Saudi Arabia (74%, +7 pts.), India (59%, +5 pts.), Italy (16%, +3 pts.), Israel (20%, +2 pts.) and Australia (20%, +2 pts.).
- *Countries with the greatest declines in this wave:* Peru (47%, -9 pts.), Malaysia (27%, -7 pts.), Brazil (59%, -5 pts.), Turkey (18%, -5 pts.), Spain (18%, -4 pts.), Poland (21%, -3 pts.), the United States (26%, -3 pts.) and South Africa (20%, -3 pts.).

Thinking about our economic situation, how would you describe the current economic situation in [insert country]? Is it very good, somewhat good, somewhat bad or very bad?

1. National Economic Assessments: Countries at a Glance Compared to the Last Wave...

Those Countries Where the Local National Economic Assessment...							
is HIGHEST this month		has experienced an IMPROVEMENT since last sounding		has experienced a DECLINE since last sounding		is LOWEST this month	
China	91%	China	13%	South Africa	-10%	Great Britain	42%
Saudi Arabia	90%	Chile	10%	Peru	-9%	Mexico	41%
India	80%	Belgium	5%	Mexico	-8%	Serbia	41%
Germany	77%	India	4%	Turkey	-5%	Hungary	36%
Australia	63%	US	1%	Germany	-4%	Russia	31%
Sweden	63%	Sweden	1%	Malaysia	-3%	Japan	29%
US	63%	Hungary	1%	Serbia	-3%	Brazil	26%
Chile	62%	Great Britain	1%	Argentina	-2%	Spain	25%
Peru	57%	France	1%	Canada	-2%	Turkey	22%
Canada	57%			Poland	-2%	France	21%
Israel	55%			Israel	-1%	South Korea	18%
Malaysia	50%			Italy	-1%	Italy	17%
Poland	48%			Russia	-1%	South Africa	14%
Belgium	46%			Saudi Arabia	-1%	Argentina	11%

Thinking about our economic situation, how would you describe the current economic situation in [insert country]? Is it very good, somewhat good, somewhat bad or very bad?

1. National Economic Assessment: Regions at a Glance Compared to the Last Wave...

REGION (in descending order by NET)	NET 'Good'	CHANGE (since last sounding)
North America	60%	-1%
BRIC	57%	4%
APAC	52%	3%
Middle East/Africa	45%	-5%
Europe	42%	0%
G-8 Countries	42%	-1%
LATAM	39%	-2%

Rate the current state of the economy in your local area using a scale from 1 to 7, where 7 means a very strong economy today and 1 means a very weak economy

2. Local Economic Assessment: Countries at a Glance Compared to the Last Wave...

Those Countries Where the Local Area Economic Assessment...							
is HIGHEST this month		has experienced an IMPROVEMENT since last sounding		has experienced a DECLINE since last sounding		is LOWEST this month	
China	77%	China	12%	Malaysia	-6%	Belgium	28%
Saudi Arabia	66%	India	8%	Mexico	-5%	Brazil	28%
India	60%	Chile	6%	Turkey	-4%	Mexico	27%
Israel	58%	Great Britain	4%	Australia	-3%	France	24%
Sweden	56%	France	4%	US	-2%	Hungary	24%
Chile	55%	South Korea	4%	Germany	-2%	Russia	21%
Germany	54%	Sweden	3%	Israel	-2%	South Korea	21%
US	52%	Serbia	3%	Saudi Arabia	-2%	Spain	21%
Australia	43%	Belgium	2%	Argentina	-1%	Italy	20%
Canada	42%	Spain	2%	South Africa	-1%	Turkey	20%
Great Britain	33%	Poland	1%	Japan	-1%	Serbia	19%
Poland	33%			Hungary	-1%	Japan	15%
Peru	32%			Peru	-1%	South Africa	15%
Malaysia	31%			Canada	-1%	Argentina	13%

Rate the current state of the economy in your local area using a scale from 1 to 7, where 7 means a very strong economy today and 1 means a very weak economy

2. Local Economic Assessment: Regions at a Glance Compared to the Last Wave...

REGION (in descending order by NET)	NET 'Strong' Top 3 Box (5-6-7)	CHANGE (since last sounding)
BRIC	47%	5%
North America	47%	-1%
APAC	40%	4%
Middle East/Africa	40%	-2%
G-8 Countries	33%	1%
Europe	31%	1%
LATAM	31%	0%

Looking ahead six months from now, do you expect the economy in your local area to be much stronger, somewhat stronger, about the same, somewhat weaker, or much weaker than it is now?

3. Six Month Outlook on the Local Economy: Countries at a Glance Compared to the Last Wave...

Countries where the Assessment of the Local Economic Strengthening ...							
is HIGHEST this month		has experienced an IMPROVEMENT since last sounding		has experienced a DECLINE since last sounding		is LOWEST this month	
Saudi Arabia	74%	China	22%	Peru	-9%	Israel	20%
China	73%	Chile	9%	Malaysia	-7%	Turkey	18%
Brazil	59%	Sweden	7%	Brazil	-5%	Spain	18%
India	59%	Saudi Arabia	7%	Turkey	-5%	Serbia	18%
Mexico	52%	India	5%	Spain	-4%	Canada	16%
Chile	49%	Italy	3%	Poland	-3%	Hungary	16%
Peru	47%	Israel	2%	US	-3%	Italy	16%
Argentina	34%	Australia	2%	South Africa	-2%	South Korea	15%
Malaysia	27%	Hungary	1%	Japan	-1%	Germany	15%
US	26%	France	1%	South Korea	-1%	Russia	13%
Sweden	23%					Great Britain	11%
Poland	21%					Japan	9%
South Africa	20%					Belgium	8%
Australia	20%					France	7%

Looking ahead six months from now, do you expect the economy in your local area to be much stronger, somewhat stronger, about the same, somewhat weaker, or much weaker than it is now?

3. Six Month Outlook on Local Economy: Regions at a Glance Compared to Last Wave...

REGION (in descending order by NET)	NET 'Stronger'	CHANGE (since last sounding)
BRIC	51%	5%
LATAM	48%	-1%
Middle East/Africa	33%	0%
APAC	32%	5%
North America	21%	-1%
Europe	15%	0%
G-8 Countries	14%	0%

DETAILED FINDINGS



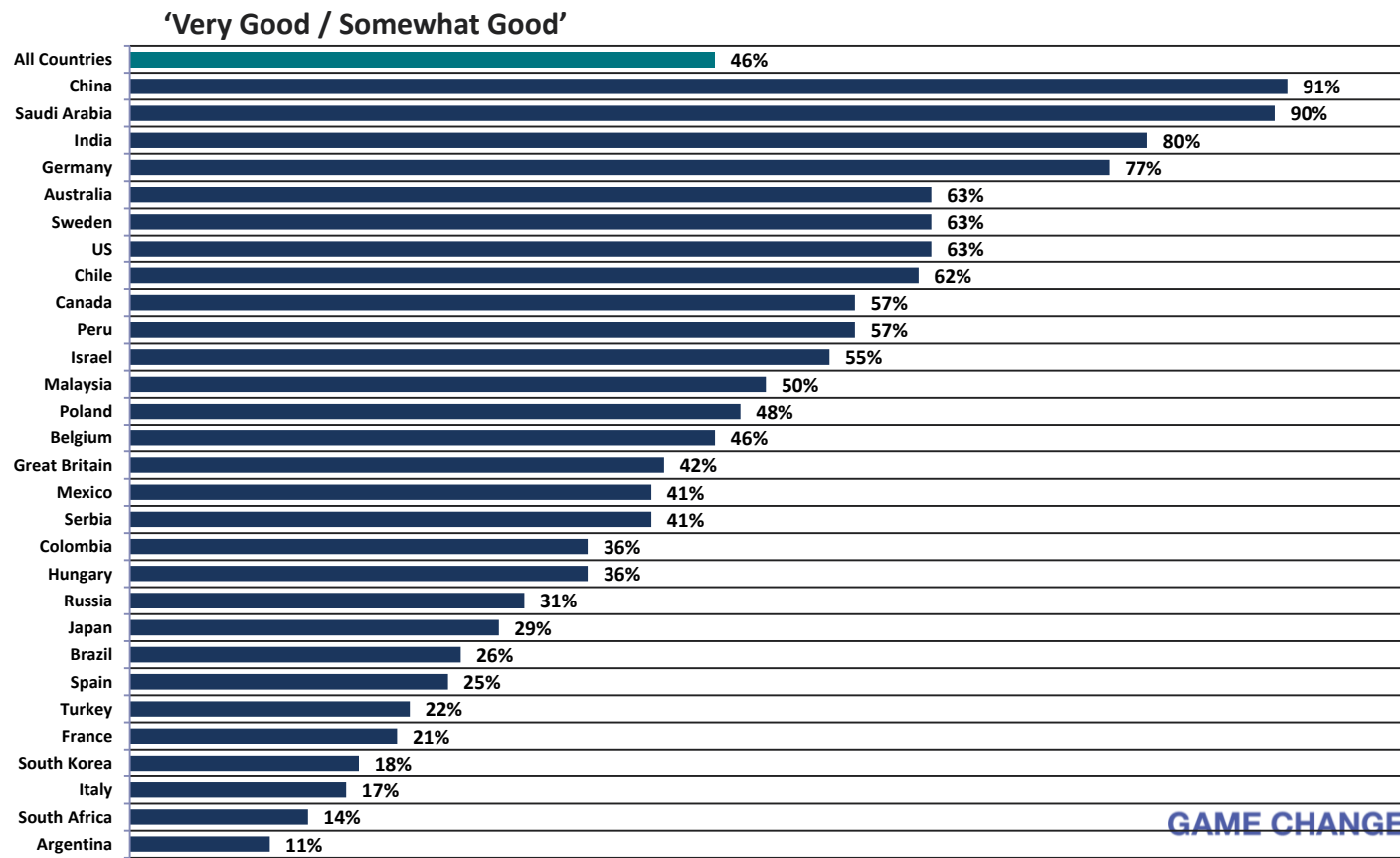
1 Assessing The Current Economic Situation

in Their Country



Now thinking about our economic situation, how would you describe the current economic situation in [insert country]? Is it very good, somewhat good, somewhat bad or very bad?

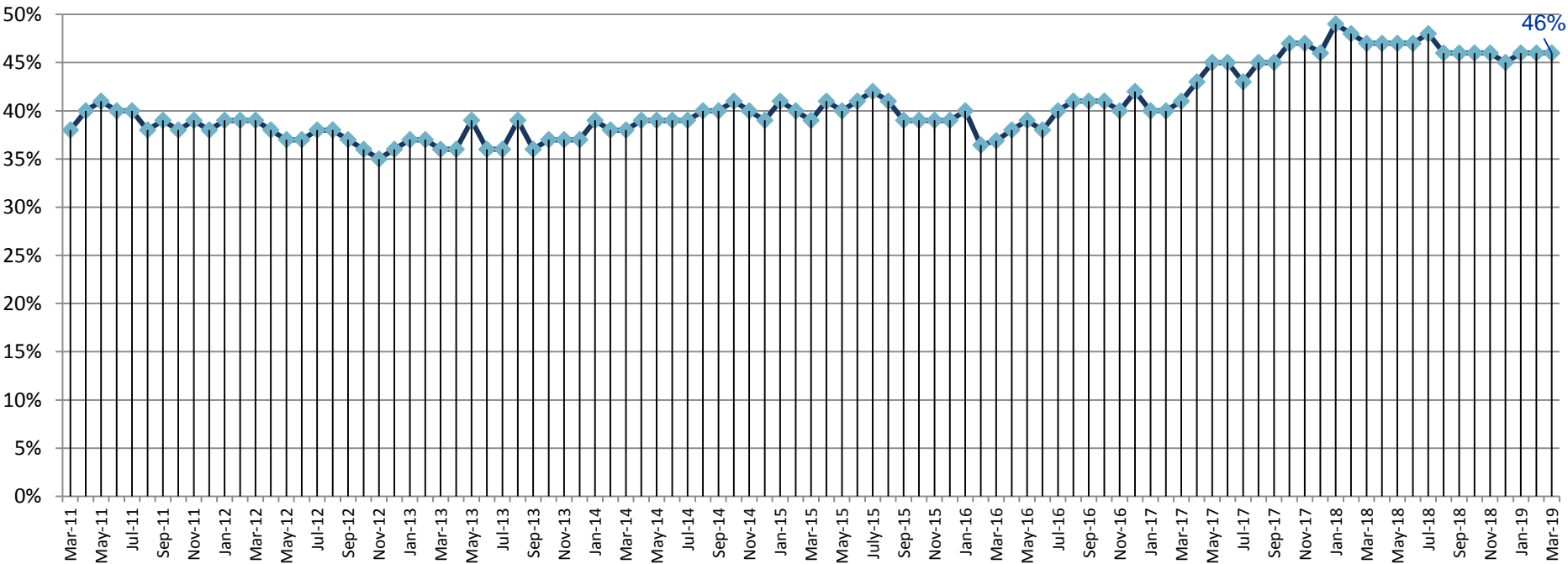
Global Citizens Assess the Current Economic Situation in their Country as “Good”



Now thinking about our economic situation, how would you describe the current economic situation in [insert country]? Is it very good, somewhat good, somewhat bad or very bad?

Global Average Tracked - Global Citizens Assess the Current Economic Situation in their Country as “Good”:...

Total Good



Now thinking about our economic situation, how would you describe the current economic situation in [insert country]? Is it very good, somewhat good, somewhat bad or very bad?

For All Countries Tracked: Citizens Assess the Current Economic Situation in their Country as “Good”

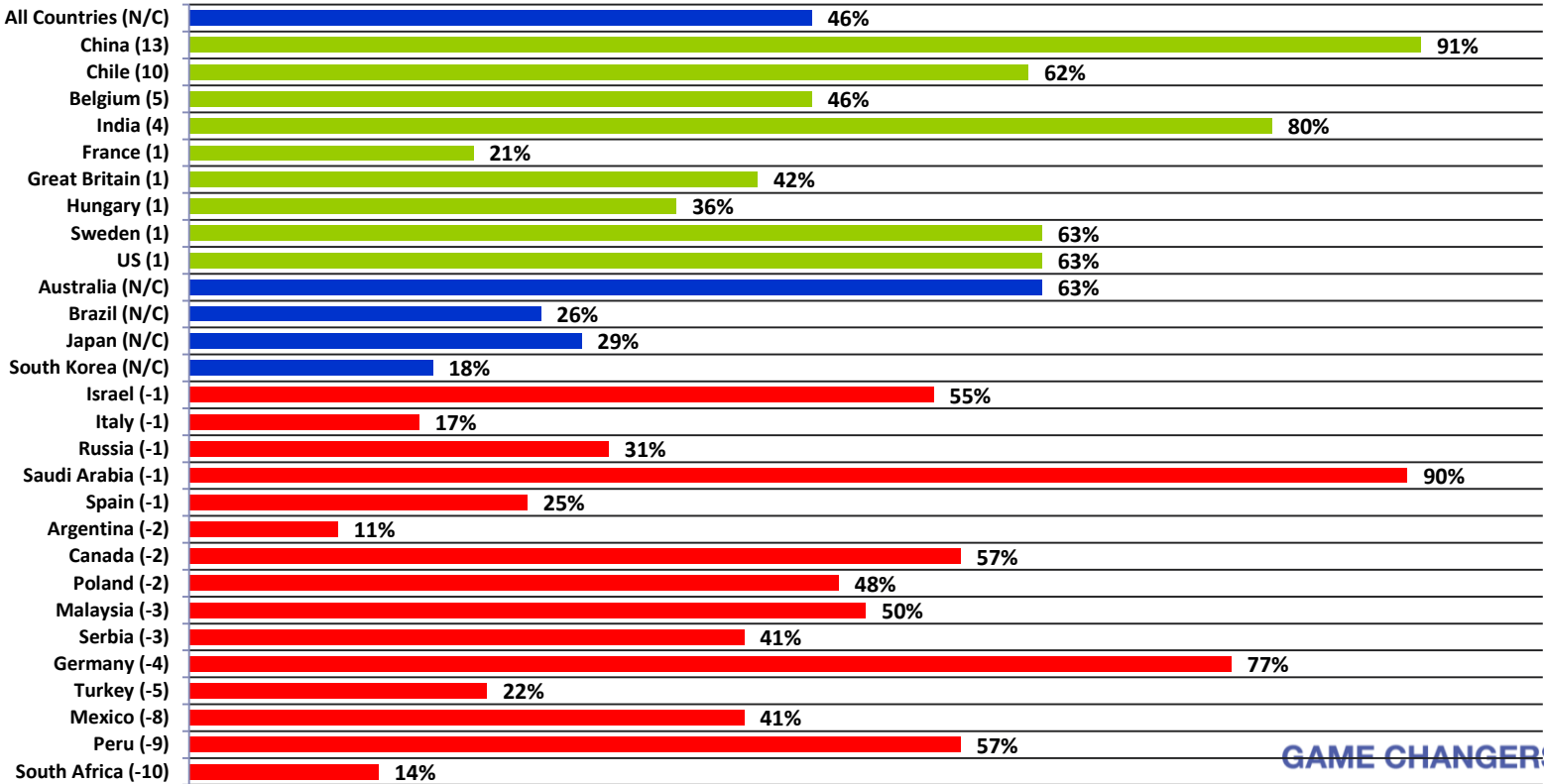
	Mar '16	Apr '16	May '16	Jun '16	Jul '16	Aug '16	Sep '16	Oct '16	Nov '16	Dec '16	Jan '17	Feb '17	Mar '17	Apr '17	May '17	Jun '17	Jul '17	Aug '17	Sep '17	Oct '17	Nov '17	Dec '17	Jan '18	Feb '18	Mar '18	Apr '18	May '18	Jun '18	Jul '18	Aug '18	Sep '18	Oct '18	Nov '18	Dec '18	Jan '19	Feb '19	Mar '19	
Total	37%	38%	39%	38%	40%	41%	41%	41%	40%	42%	40%	40%	41%	43%	45%	45%	43%	45%	45%	47%	47%	46%	49%	48%	47%	47%	47%	47%	48%	46%	46%	46%	46%	45%	46%	46%	46%	46%
Argentina	15%	15%	17%	21%	19%	19%	18%	20%	21%	23%	20%	23%	21%	21%	27%	22%	19%	20%	33%	34%	38%	28%	32%	28%	26%	30%	21%	21%	20%	13%	12%	12%	12%	16%	13%	13%	11%	
Australia	52%	52%	59%	51%	56%	55%	55%	58%	60%	62%	60%	57%	58%	60%	59%	58%	56%	60%	60%	69%	60%	61%	67%	69%	64%	63%	62%	66%	66%	63%	61%	65%	60%	63%	62%	63%	63%	
Belgium	39%	33%	36%	27%	33%	39%	37%	28%	33%	36%	37%	41%	34%	45%	47%	49%	48%	46%	45%	51%	53%	58%	56%	52%	54%	50%	58%	55%	54%	58%	50%	49%	53%	43%	44%	41%	46%	
Brazil	7%	8%	7%	6%	8%	12%	7%	9%	9%	13%	9%	10%	11%	9%	10%	9%	12%	9%	17%	13%	11%	11%	17%	10%	11%	14%	15%	10%	15%	15%	15%	19%	21%	26%	26%	26%		
Chile																							57%	66%	61%	62%	52%	63%	61%	51%	52%	57%	56%	55%	56%	52%	62%	
Canada	36%	49%	52%	53%	57%	59%	56%	54%	53%	61%	52%	55%	56%	59%	56%	59%	62%	69%	67%	67%	68%	61%	65%	55%	56%	56%	55%	61%	64%	57%	60%	59%	62%	58%	59%	59%	57%	
China	67%	67%	65%	69%	71%	72%	72%	76%	76%	79%	74%	76%	78%	80%	81%	82%	78%	84%	86%	84%	87%	86%	90%	88%	88%	89%	84%	86%	82%	90%	85%	92%	91%	79%	84%	78%	91%	
France	12%	12%	13%	11%	13%	16%	13%	11%	14%	21%	16%	14%	17%	15%	17%	25%	24%	22%	23%	25%	25%	27%	34%	35%	32%	29%	28%	29%	28%	25%	24%	23%	21%	17%	20%	20%	21%	
Germany	67%	74%	73%	74%	78%	76%	75%	75%	77%	76%	77%	74%	81%	79%	81%	82%	79%	80%	80%	80%	80%	80%	81%	79%	79%	80%	83%	81%	82%	78%	80%	80%	81%	81%	83%	81%	77%	
Great Britain	49%	39%	44%	48%	37%	42%	45%	50%	41%	38%	43%	44%	44%	48%	47%	42%	39%	40%	36%	41%	40%	35%	43%	41%	45%	45%	51%	40%	46%	41%	42%	45%	43%	40%	40%	41%	42%	
Hungary	20%	22%	16%	18%	18%	19%	21%	21%	17%	24%	25%	23%	22%	22%	25%	27%	19%	26%	29%	27%	27%	23%	26%	32%	26%	28%	31%	32%	36%	27%	30%	31%	31%	32%	30%	35%	36%	
India	82%	81%	80%	81%	81%	83%	84%	82%	86%	79%	78%	80%	77%	82%	83%	82%	80%	82%	80%	74%	76%	81%	81%	77%	79%	76%	74%	77%	76%	76%	78%	66%	71%	71%	74%	76%	80%	
Israel	43%	52%	42%	48%	50%	48%	52%	53%	49%	46%	46%	48%	54%	57%	60%	59%	52%	57%	50%	58%	57%	57%	60%	65%	58%	62%	66%	66%	63%	61%	59%	62%	59%	59%	56%	56%	55%	
Italy	13%	14%	14%	14%	13%	15%	13%	15%	14%	18%	15%	15%	16%	12%	14%	17%	17%	14%	16%	17%	17%	17%	17%	18%	18%	20%	18%	18%	23%	25%	21%	20%	24%	20%	23%	18%	17%	
Japan	23%	21%	19%	19%	21%	23%	26%	29%	28%	38%	29%	32%	30%	34%	34%	38%	37%	34%	34%	39%	40%	37%	42%	39%	41%	38%	37%	36%	36%	35%	41%	35%	33%	38%	32%	29%	29%	
Malaysia																							45%	47%	41%	40%	45%	56%	66%	57%	60%	56%	55%	47%	44%	53%	50%	
Mexico	23%	24%	20%	19%	14%	23%	20%	17%	20%	21%	14%	14%	17%	20%	27%	25%	22%	31%	31%	28%	27%	27%	31%	27%	22%	24%	26%	27%	32%	28%	32%	31%	33%	34%	46%	49%	41%	
Peru	45%	52%	54%	54%	61%	62%	69%	65%	65%	72%	67%	61%	60%	62%	77%	69%	52%	60%	58%	63%	61%	59%	63%	55%	60%	55%	54%	50%	54%	55%	62%	61%	60%	61%	63%	66%	57%	
Poland	29%	36%	31%	31%	38%	41%	42%	37%	36%	39%	36%	35%	40%	41%	44%	46%	48%	49%	52%	60%	49%	53%	59%	55%	54%	50%	57%	55%	56%	51%	52%	57%	58%	55%	53%	50%	48%	
Russia	28%	25%	28%	26%	27%	29%	28%	28%	29%	29%	33%	32%	33%	34%	35%	32%	36%	37%	34%	36%	44%	34%	42%	36%	36%	33%	35%	35%	34%	32%	32%	31%	29%	28%	27%	32%	31%	
Saudi Arabia	89%	86%	91%	88%	91%	87%	78%	80%	82%	79%	80%	78%	74%	79%	87%	84%	80%	76%	81%	83%	80%	81%	73%	78%	77%	80%	81%	83%	81%	83%	80%	85%	87%	88%	87%	91%	90%	
Serbia												21%	27%	32%	31%	32%	33%	32%	27%	25%	33%	37%	38%	40%	34%	39%	38%	38%	37%	35%	34%	38%	44%	41%	45%	44%	41%	
South Africa	9%	11%	17%	13%	12%	12%	17%	18%	15%	15%	16%	18%	18%	17%	13%	14%	9%	13%	14%	10%	15%	12%	19%	25%	30%	29%	22%	19%	17%	17%	15%	14%	15%	17%	21%	24%	14%	
South Korea	13%	13%	13%	10%	13%	14%	13%	15%	10%	15%	7%	7%	7%	10%	13%	23%	24%	24%	20%	25%	27%	30%	29%	26%	25%	28%	33%	23%	25%	20%	17%	20%	17%	13%	16%	18%	18%	
Spain	15%	15%	14%	13%	14%	16%	16%	15%	13%	17%	17%	16%	18%	21%	22%	22%	24%	25%	25%	28%	26%	21%	24%	17%	20%	23%	22%	23%	25%	27%	21%	22%	18%	22%	24%	26%	25%	
Sweden	63%	69%	68%	65%	74%	68%	70%	65%	66%	66%	69%	69%	70%	69%	77%	69%	72%	75%	72%	78%	75%	77%	71%	78%	77%	69%	65%	68%	63%	71%	70%	64%	70%	69%	68%	62%	63%	
Turkey	38%	40%	42%	39%	41%	40%	43%	50%	45%	37%	37%	29%	38%	39%	42%	37%	40%	41%	47%	40%	36%	37%	35%	37%	39%	37%	32%	32%	41%	39%	31%	22%	25%	24%	26%	27%	22%	
United States	45%	46%	48%	48%	49%	53%	50%	48%	45%	55%	52%	55%	57%	59%	57%	62%	57%	61%	61%	63%	60%	61%	66%	64%	66%	66%	63%	61%	63%	64%	65%	67%	67%	65%	63%	62%	63%	

Thinking about our economic situation, how would you describe the current economic situation in [insert country]? Is it very good, somewhat good, somewhat bad or very bad?

Countries Ranked and Marked By Change In Assessment From Last Month (Left Column)

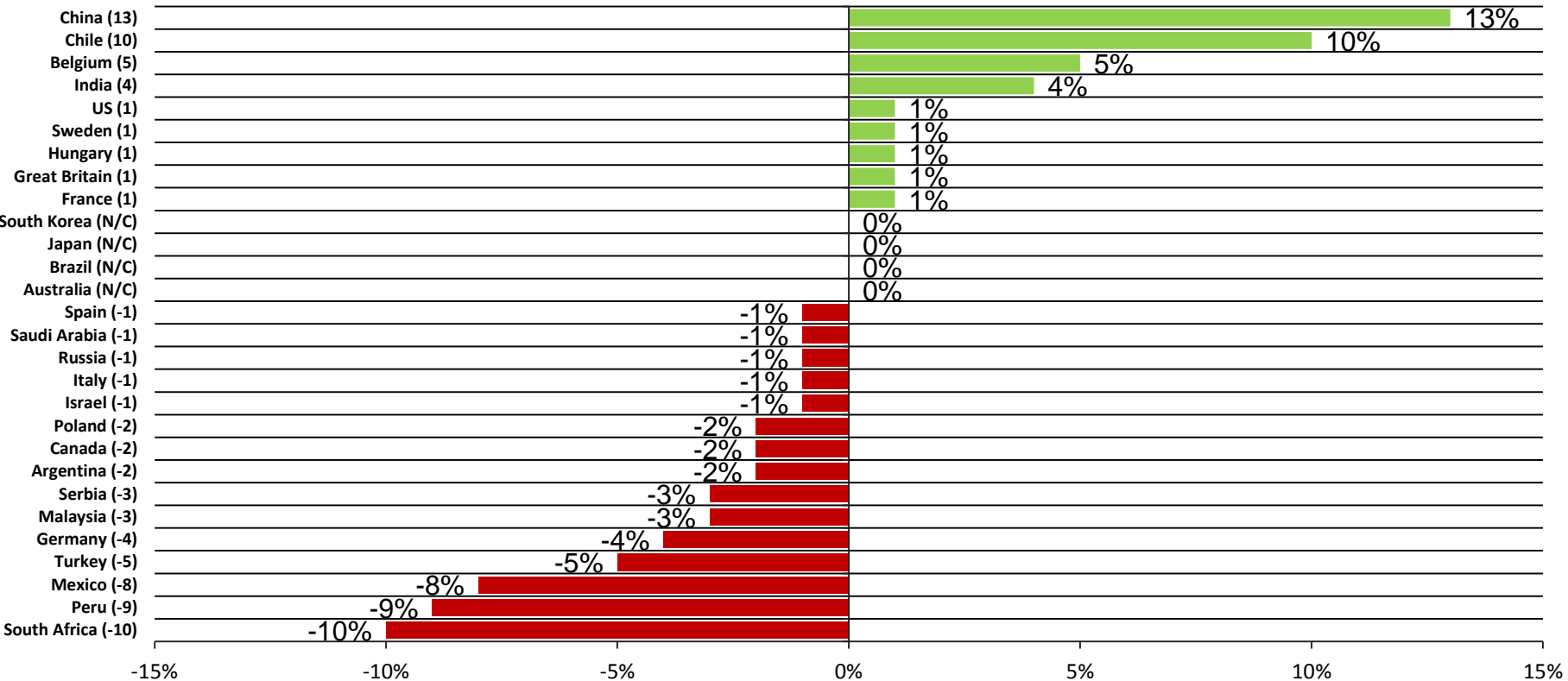
Green marks countries experiencing improvement;
Blue marks countries with no change from last month;
Red marks countries experiencing a decline;

% Very Good / Somewhat Good



Thinking about our economic situation, how would you describe the current economic situation in [insert country]? Is it very good, somewhat good, somewhat bad or very bad?

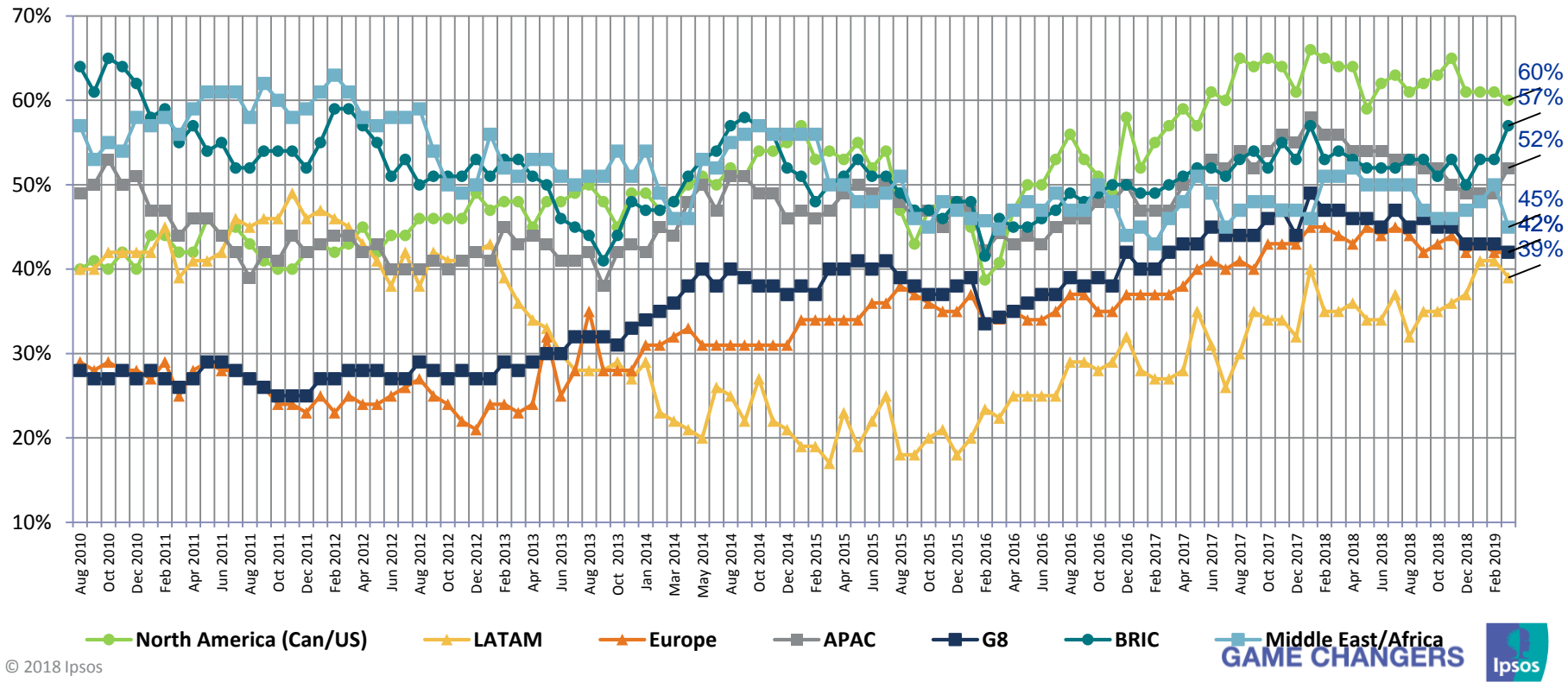
Countries Ranked by Net Improvement, Decline or No Change Compared to Last Month:



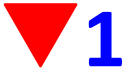
Now thinking about our economic situation, how would you describe the current economic situation in [insert country]? Is it very good, somewhat good, somewhat bad or very bad?

Assessing the Current Economic Situation by All Regions:

Very Good / Somewhat Good

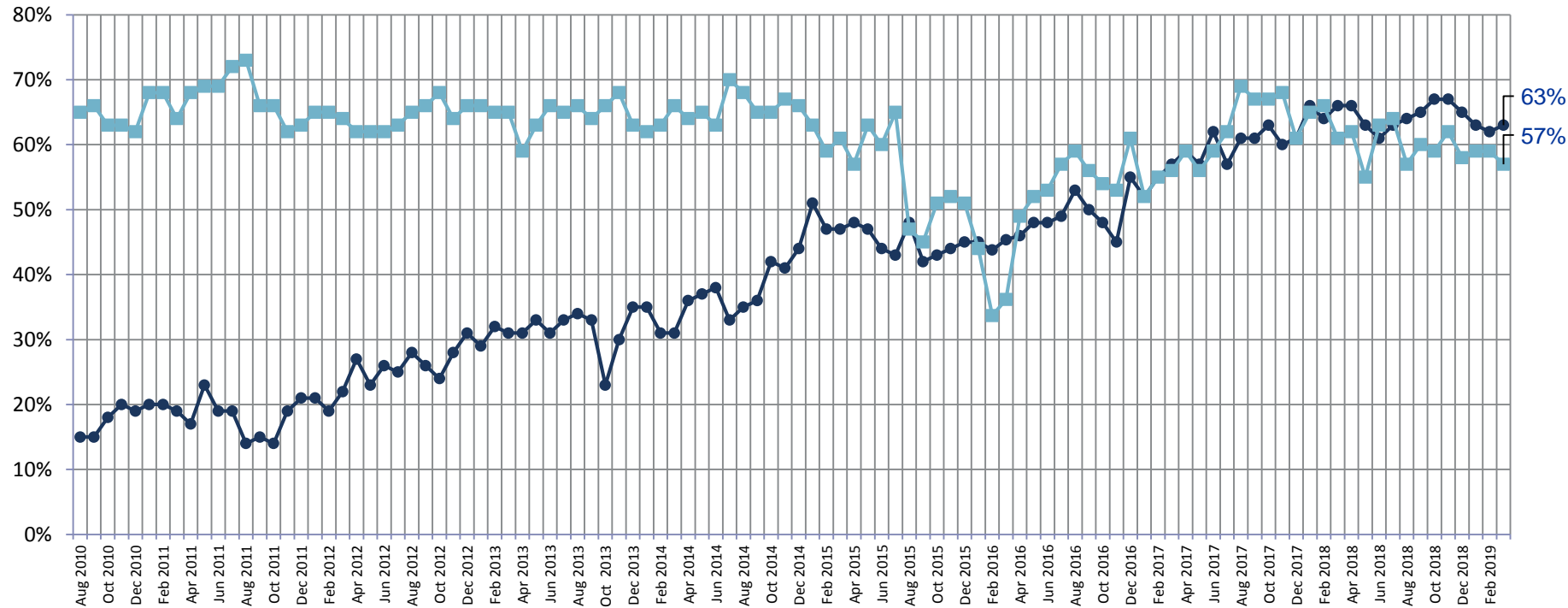


Now thinking about our economic situation, how would you describe the current economic situation in [insert country]? Is it very good, somewhat good, somewhat bad or very bad?

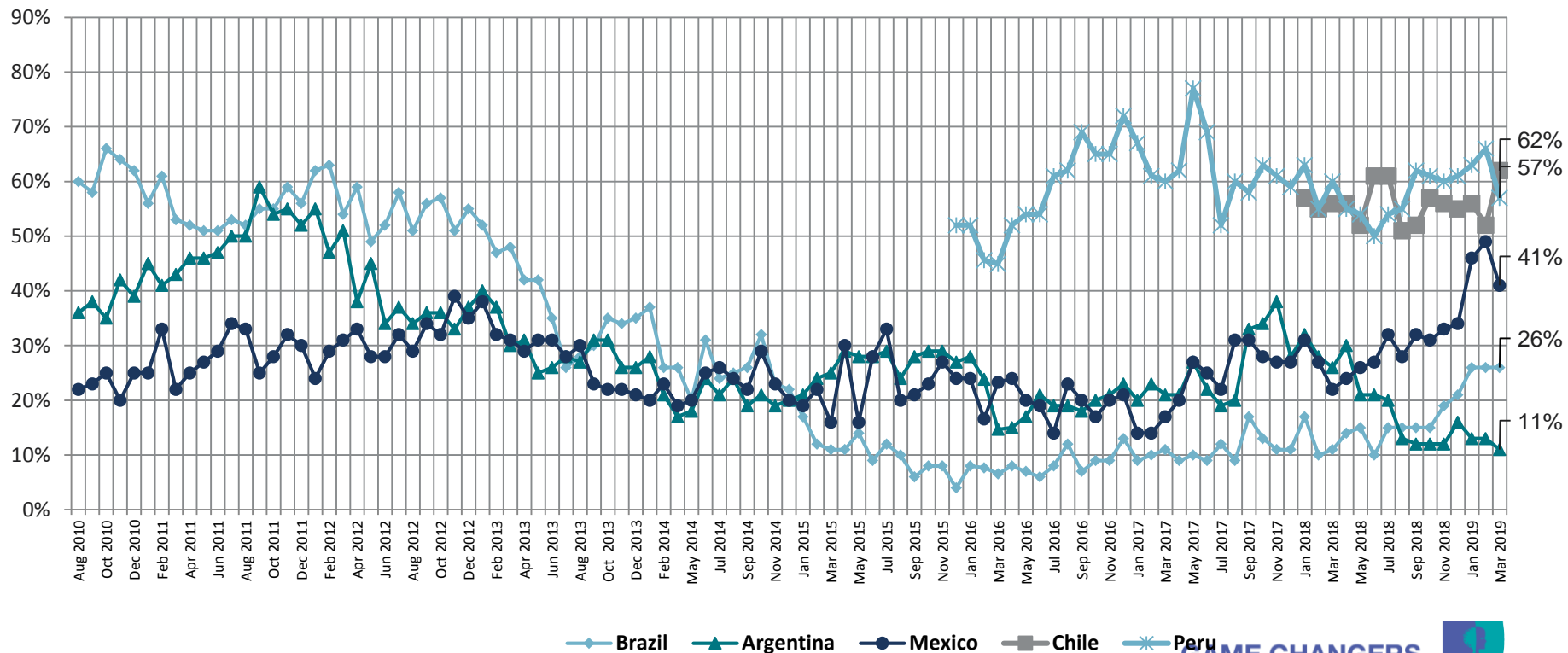


North American (Canada/US) Countries - Assessing the Current Economic Situation

Very Good / Somewhat Good

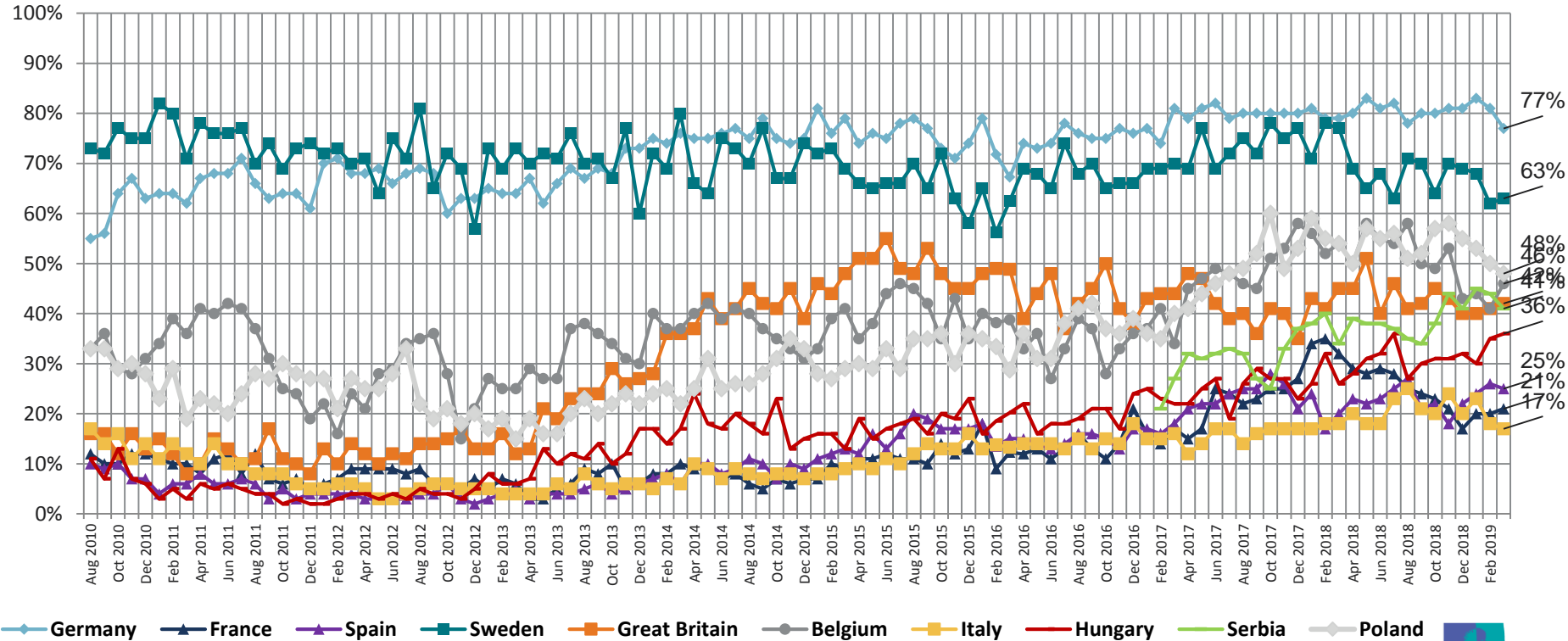


Very Good / Somewhat Good

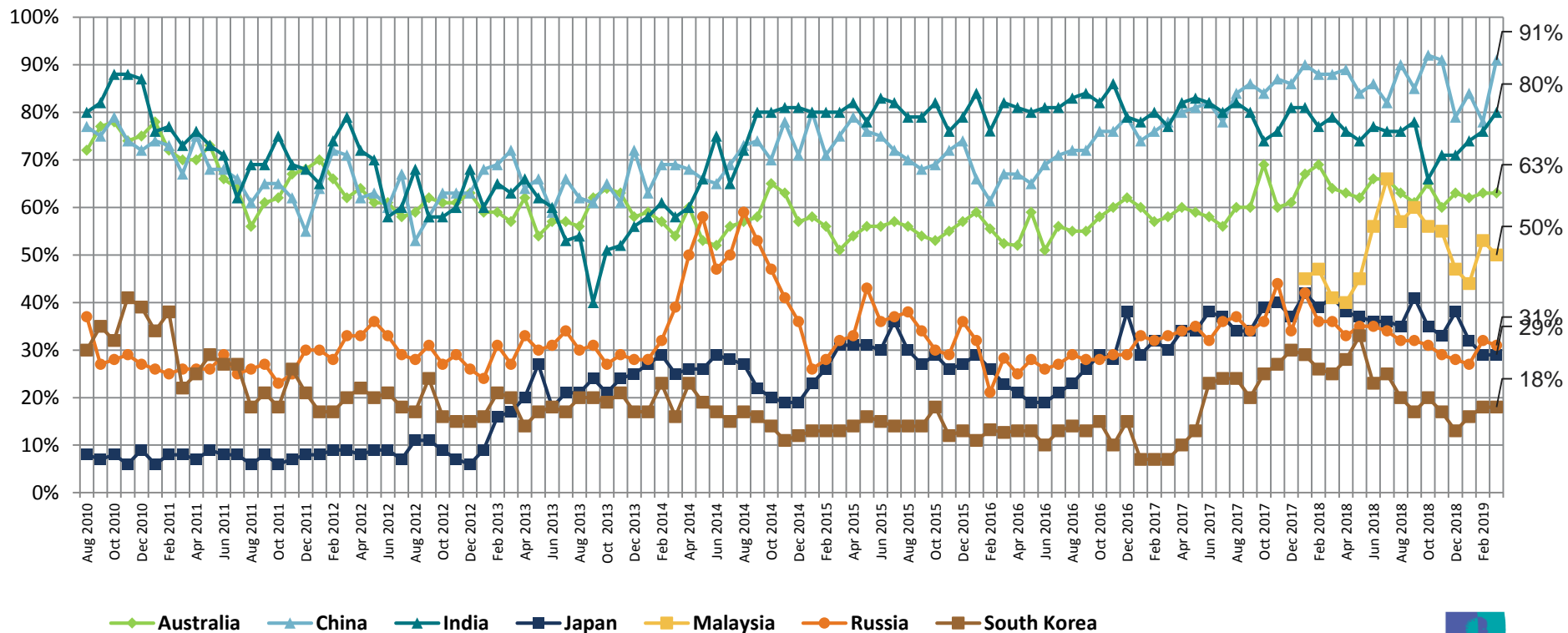


European Countries - Assessing the Current Economic Situation

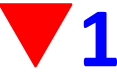
Very Good / Somewhat Good



Very Good / Somewhat Good

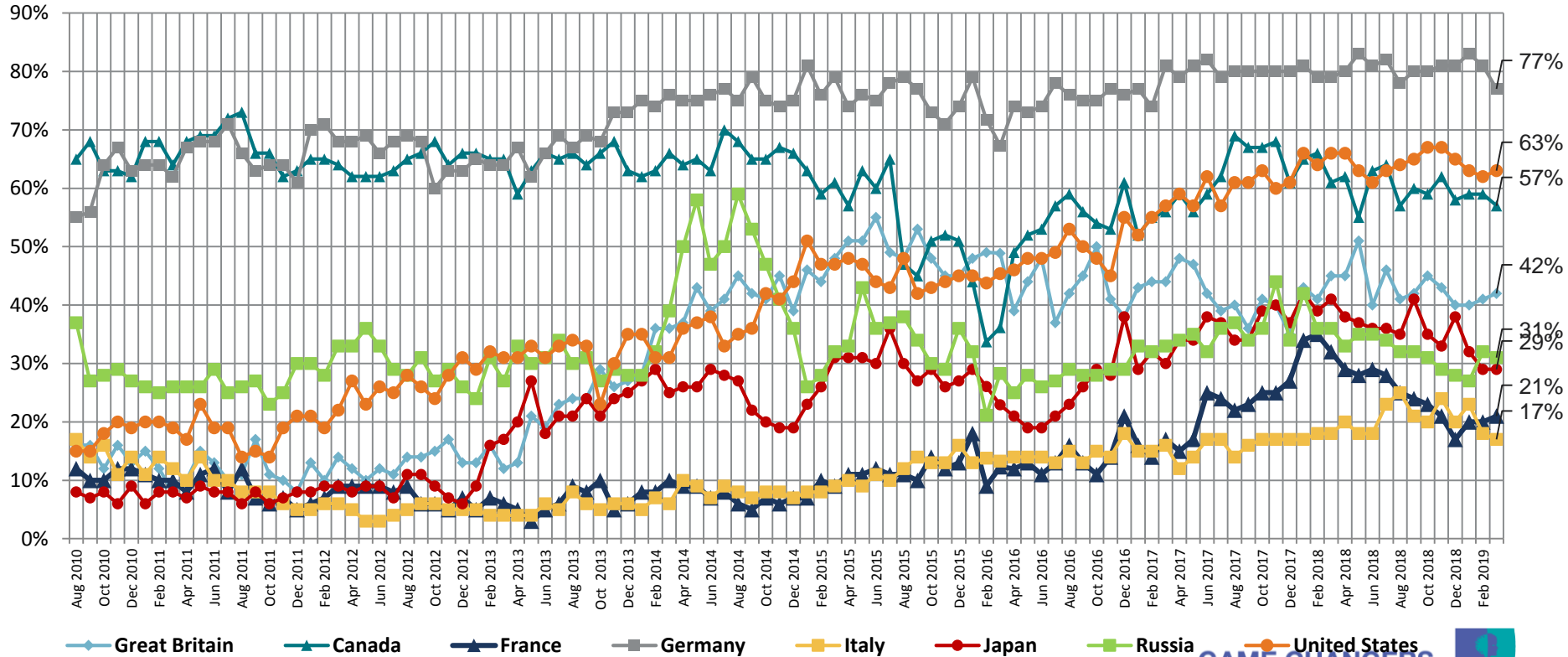


Now thinking about our economic situation, how would you describe the current economic situation in [insert country]? Is it very good, somewhat good, somewhat bad or very bad?



G8 Countries - Assessing the Current Economic Situation

Very Good / Somewhat Good

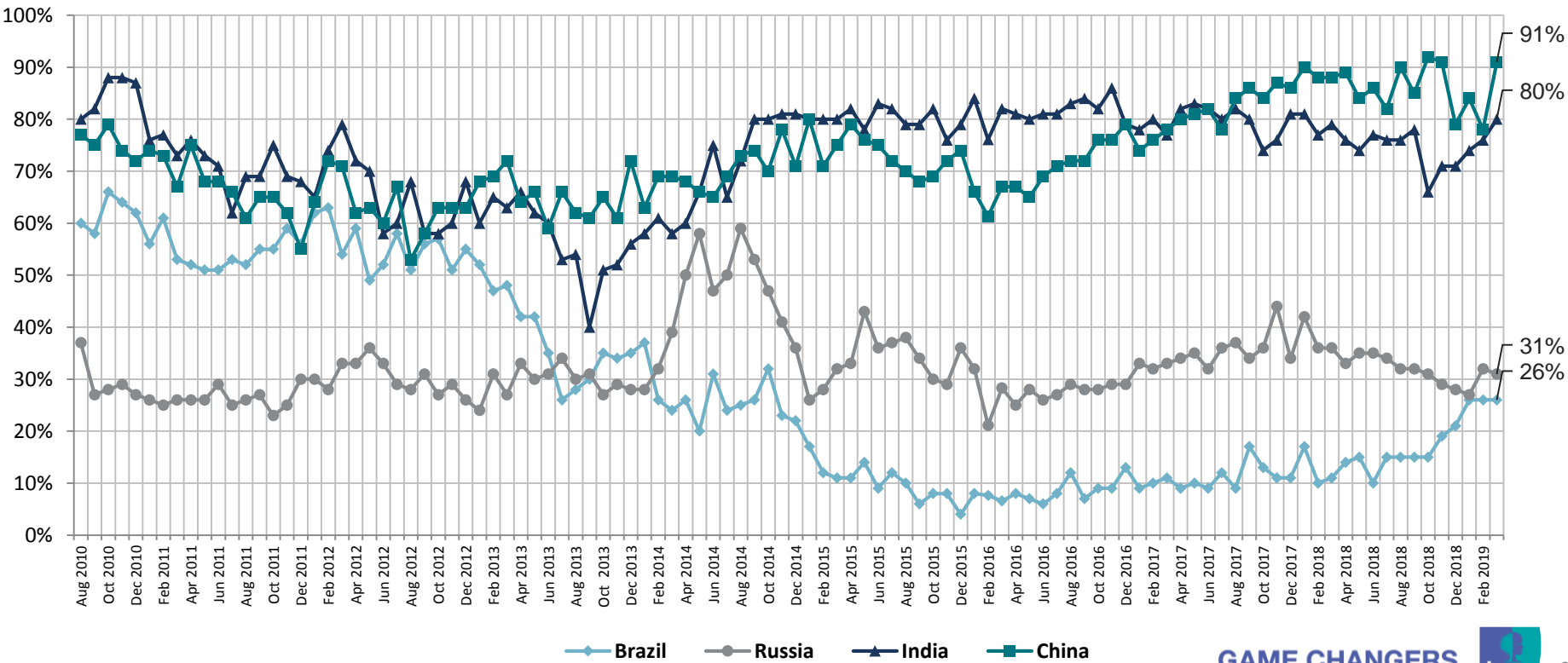


Now thinking about our economic situation, how would you describe the current economic situation in [insert country]? Is it very good, somewhat good, somewhat bad or very bad?



BRIC Countries - Assessing the Current Economic Situation

Very Good / Somewhat Good

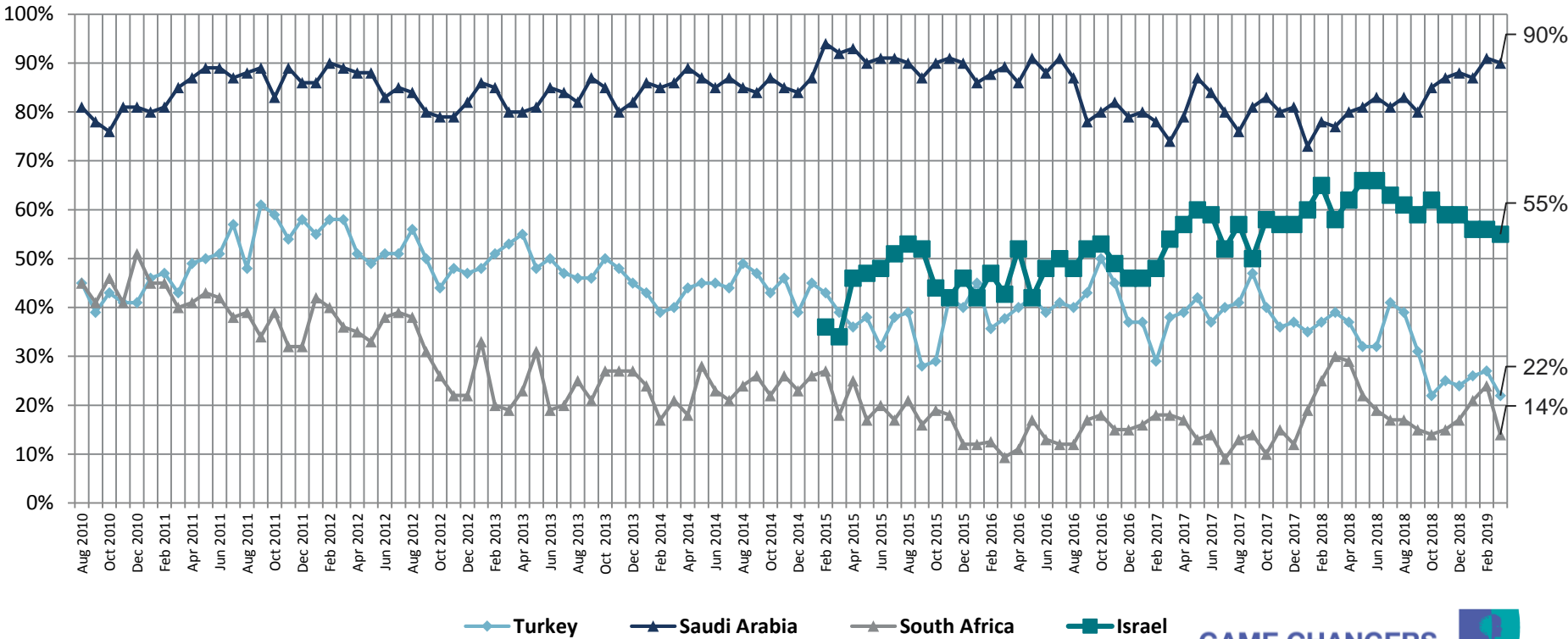


Now thinking about our economic situation, how would you describe the current economic situation in [insert country]? Is it very good, somewhat good, somewhat bad or very bad?



Middle East/African Countries - Assessing the Current Economic Situation

Very Good / Somewhat Good



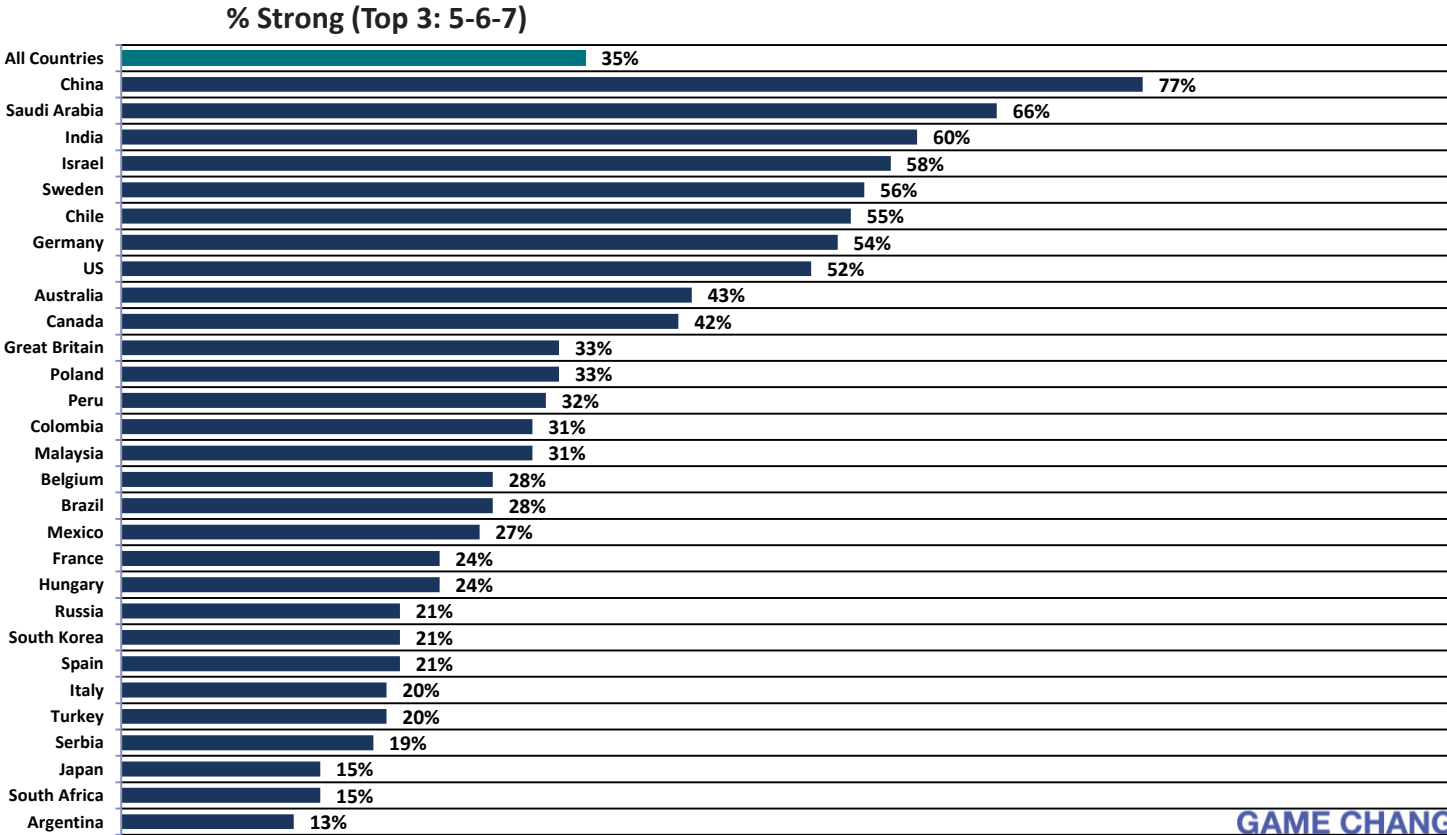
2 Assessing The Economy...

...in Their Local Area



Rate the current state of the economy in your local area using a scale from 1 to 7, where 7 means a very strong economy today and 1 means a very weak economy

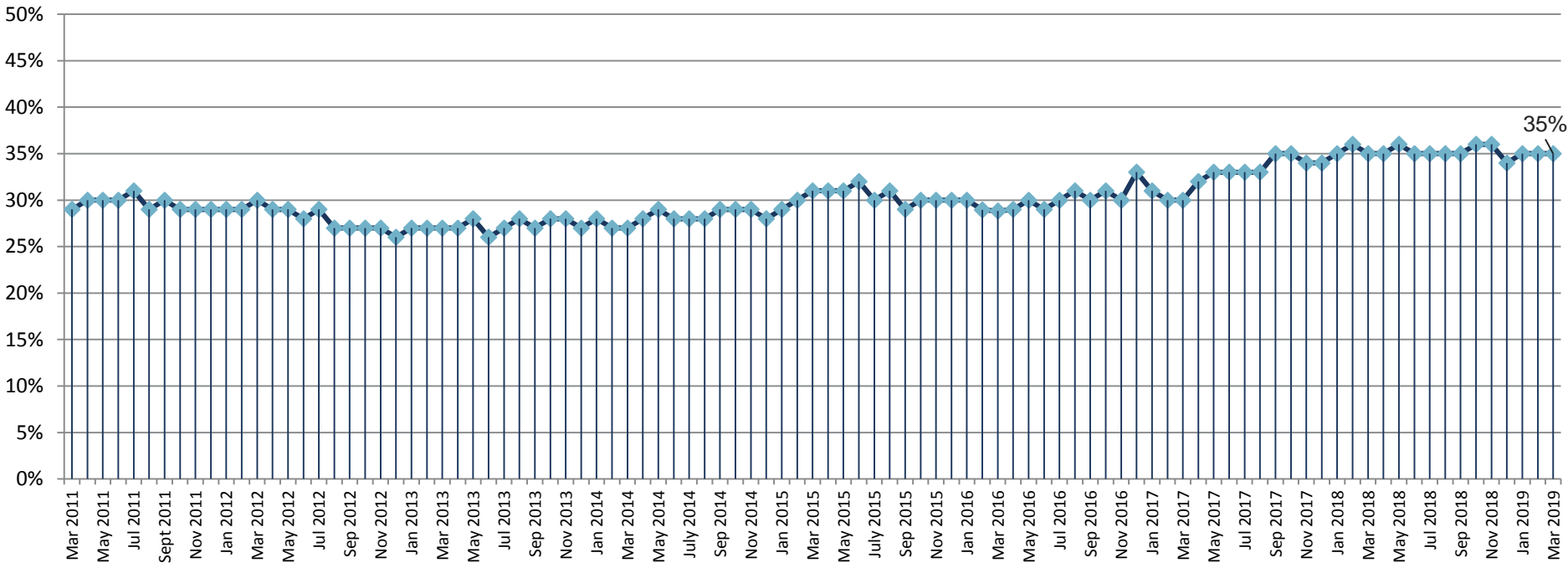
Citizen Consumers Who Say The Economy In Their Local Area is Strong...



Rate the current state of the economy in your local area using a scale from 1 to 7, where 7 means a very strong economy today and 1 means a very weak economy.

Citizen Consumers Who Say The Economy In Their Local Area is Strong

Total - % Strong (Top 3: 5-6-7)



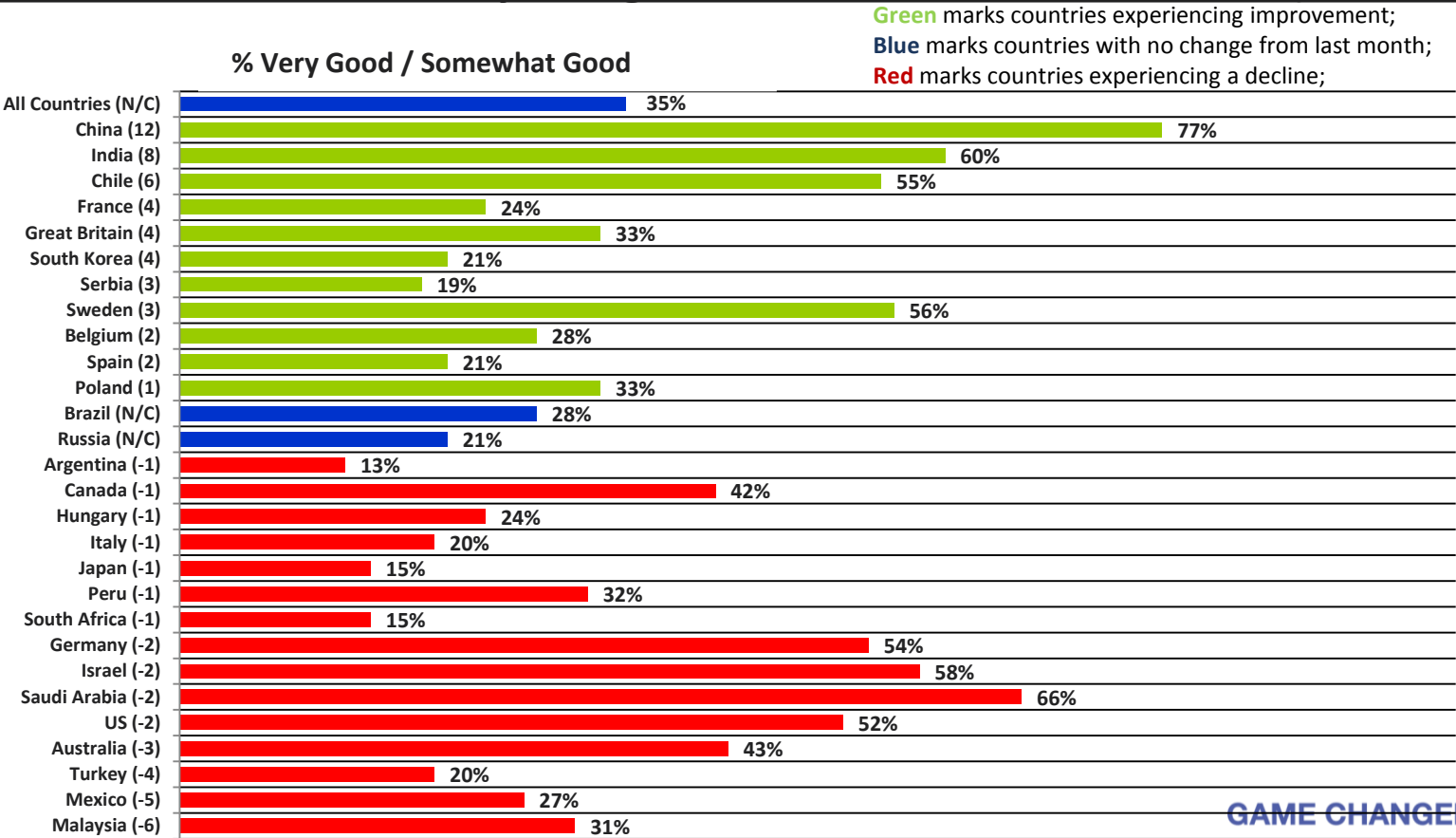
Rate the current state of the economy in your local area using a scale from 1 to 7, where 7 means a very strong economy today and 1 means a very weak economy.
% Strong (Top 3 5-6-7)

Citizen Consumers Who Say The Economy In Their Local Area is Strong

	Mar '16	Apr '16	May '16	Jun '16	Jul '16	Aug '16	Sep '16	Oct '16	Nov '16	Dec '16	Jan '17	Feb '17	Mar '17	Apr '17	May '17	Jun '17	Jul '17	Aug '17	Sep '17	Oct '17	Nov '17	Dec '17	Jan '18	Feb '18	Mar '18	Apr '18	May '18	Jun '18	Jul '18	Aug '18	Sep '18	Oct '18	Nov '18	Dec '18	Jan '19	Feb '19	Mar '19
Total	29%	29%	30%	29%	30%	31%	30%	31%	30%	33%	31%	30%	30%	32%	33%	33%	33%	33%	35%	35%	34%	34%	35%	36%	35%	35%	36%	35%	35%	35%	36%	36%	34%	35%	35%	35%	
Argentina	14%	16%	18%	17%	18%	15%	14%	16%	15%	21%	17%	19%	18%	19%	19%	19%	16%	18%	29%	29%	30%	23%	26%	20%	20%	23%	20%	19%	15%	18%	12%	12%	14%	16%	14%	14%	13%
Australia	34%	33%	39%	32%	37%	36%	34%	38%	38%	39%	38%	38%	37%	40%	40%	38%	39%	41%	41%	50%	40%	37%	43%	49%	45%	42%	41%	45%	44%	42%	41%	45%	44%	43%	40%	46%	43%
Belgium	26%	19%	21%	16%	20%	24%	22%	20%	20%	23%	20%	25%	23%	28%	31%	28%	30%	28%	30%	34%	32%	35%	37%	35%	33%	33%	36%	34%	33%	37%	30%	33%	34%	31%	28%	26%	28%
Brazil	10%	13%	14%	12%	14%	16%	13%	15%	14%	17%	14%	16%	17%	15%	16%	16%	16%	15%	19%	18%	16%	13%	19%	19%	18%	18%	21%	15%	19%	19%	16%	19%	22%	23%	30%	28%	28%
Canada	24%	33%	33%	34%	37%	36%	39%	34%	36%	42%	36%	34%	38%	39%	38%	41%	44%	46%	48%	44%	44%	41%	44%	46%	44%	45%	42%	46%	46%	46%	44%	45%	48%	41%	43%	43%	42%
Chile																						50%	49%	50%	53%	46%	50%	55%	45%	51%	52%	49%	44%	50%	49%	55%	
China	54%	55%	54%	55%	57%	58%	58%	59%	61%	62%	58%	57%	60%	60%	67%	62%	65%	66%	71%	69%	73%	73%	73%	73%	74%	75%	72%	72%	68%	82%	76%	80%	81%	65%	66%	65%	77%
France	15%	13%	16%	15%	14%	14%	15%	13%	17%	18%	16%	16%	19%	16%	19%	21%	23%	22%	23%	21%	20%	23%	26%	28%	23%	25%	24%	23%	22%	21%	20%	18%	19%	23%	20%	24%	
Germany	52%	54%	51%	51%	55%	51%	55%	53%	56%	59%	54%	53%	59%	55%	58%	61%	62%	61%	59%	61%	58%	60%	58%	63%	58%	56%	58%	62%	62%	60%	59%	60%	61%	60%	56%	54%	
Great Britain	33%	24%	30%	27%	27%	28%	30%	32%	32%	30%	30%	31%	31%	34%	35%	34%	31%	29%	27%	29%	29%	26%	31%	31%	30%	32%	35%	28%	31%	29%	32%	32%	34%	32%	32%	29%	33%
Hungary	17%	17%	15%	16%	14%	15%	17%	17%	15%	19%	18%	18%	17%	18%	18%	22%	18%	26%	18%	24%	20%	18%	21%	21%	24%	22%	21%	24%	24%	21%	19%	22%	22%	23%	25%	25%	24%
India	55%	57%	57%	54%	55%	55%	53%	62%	60%	62%	60%	61%	56%	65%	61%	61%	62%	62%	62%	57%	54%	57%	60%	57%	59%	58%	55%	59%	58%	55%	59%	50%	54%	49%	55%	52%	60%
Israel	53%	59%	55%	56%	50%	58%	53%	55%	62%	53%	56%	55%	56%	60%	59%	56%	54%	56%	57%	56%	51%	56%	57%	60%	58%	66%	66%	55%	58%	59%	60%	61%	59%	56%	59%	60%	58%
Italy	13%	13%	14%	16%	12%	12%	13%	12%	14%	15%	15%	14%	15%	14%	16%	17%	16%	16%	17%	14%	16%	16%	15%	17%	16%	19%	15%	18%	21%	21%	20%	21%	24%	21%	21%	21%	20%
Japan	12%	12%	11%	13%	11%	11%	12%	13%	12%	17%	13%	14%	15%	13%	16%	18%	16%	16%	18%	17%	20%	18%	19%	18%	22%	17%	18%	18%	15%	18%	19%	17%	17%	15%	16%	16%	15%
Malaysia																							33%	32%	30%	28%	35%	43%	47%	37%	43%	39%	36%	34%	33%	37%	31%
Mexico	18%	16%	24%	12%	10%	19%	17%	13%	11%	17%	10%	10%	16%	17%	20%	16%	17%	22%	22%	22%	23%	22%	23%	22%	17%	20%	20%	22%	24%	23%	26%	26%	24%	34%	34%	32%	27%
Peru	17%	22%	25%	28%	30%	32%	36%	35%	35%	42%	39%	29%	34%	35%	48%	36%	25%	37%	31%	35%	36%	33%	34%	30%	35%	28%	30%	28%	32%	33%	33%	33%	38%	35%	38%	33%	32%
Poland	19%	22%	25%	27%	26%	28%	28%	28%	23%	22%	26%	24%	27%	28%	31%	31%	35%	33%	34%	39%	36%	37%	38%	37%	37%	30%	38%	35%	35%	35%	37%	35%	38%	36%	38%	32%	33%
Russia	23%	20%	21%	17%	23%	20%	17%	19%	18%	24%	22%	23%	20%	22%	21%	22%	24%	18%	25%	25%	29%	20%	14%	23%	24%	15%	23%	22%	21%	20%	20%	27%	21%	22%	15%	21%	21%
Saudi Arabia	68%	59%	68%	64%	70%	62%	51%	57%	58%	56%	58%	56%	53%	57%	65%	63%	64%	50%	58%	58%	57%	63%	56%	61%	54%	62%	62%	63%	63%	57%	64%	68%	67%	71%	69%	68%	66%
Serbia												8%	9%	9%	12%	13%	11%	10%	10%	10%	11%	13%	14%	13%	11%	13%	14%	13%	10%	15%	16%	19%	17%	15%	16%	16%	19%
South Africa	8%	9%	17%	11%	11%	11%	15%	16%	16%	13%	12%	14%	15%	14%	14%	14%	10%	13%	13%	11%	14%	12%	17%	22%	20%	23%	20%	16%	18%	17%	13%	13%	11%	14%	16%	16%	15%
South Korea	14%	12%	12%	10%	13%	15%	13%	14%	5%	15%	6%	7%	6%	10%	10%	19%	23%	20%	22%	20%	21%	24%	24%	24%	24%	24%	28%	20%	20%	17%	19%	20%	17%	16%	17%	17%	21%
Spain	13%	13%	12%	11%	14%	16%	12%	14%	14%	19%	15%	15%	15%	18%	16%	17%	21%	20%	21%	21%	22%	17%	18%	17%	19%	19%	18%	21%	18%	17%	19%	17%	15%	19%	17%	19%	21%
Sweden	57%	55%	57%	57%	51%	58%	48%	59%	54%	51%	56%	52%	55%	60%	60%	55%	56%	60%	60%	63%	63%	60%	62%	65%	60%	55%	57%	54%	47%	56%	53%	53%	60%	55%	51%	53%	56%
Turkey	33%	30%	31%	29%	29%	29%	36%	42%	33%	29%	30%	21%	28%	36%	27%	31%	31%	30%	33%	26%	31%	30%	28%	31%	32%	27%	28%	29%	34%	32%	29%	25%	23%	18%	25%	24%	20%
United States	40%	38%	40%	39%	39%	48%	43%	46%	39%	46%	43%	47%	46%	50%	49%	53%	46%	49%	53%	54%	49%	47%	53%	55%	54%	56%	58%	50%	53%	54%	56%	55%	57%	55%	55%	54%	52%

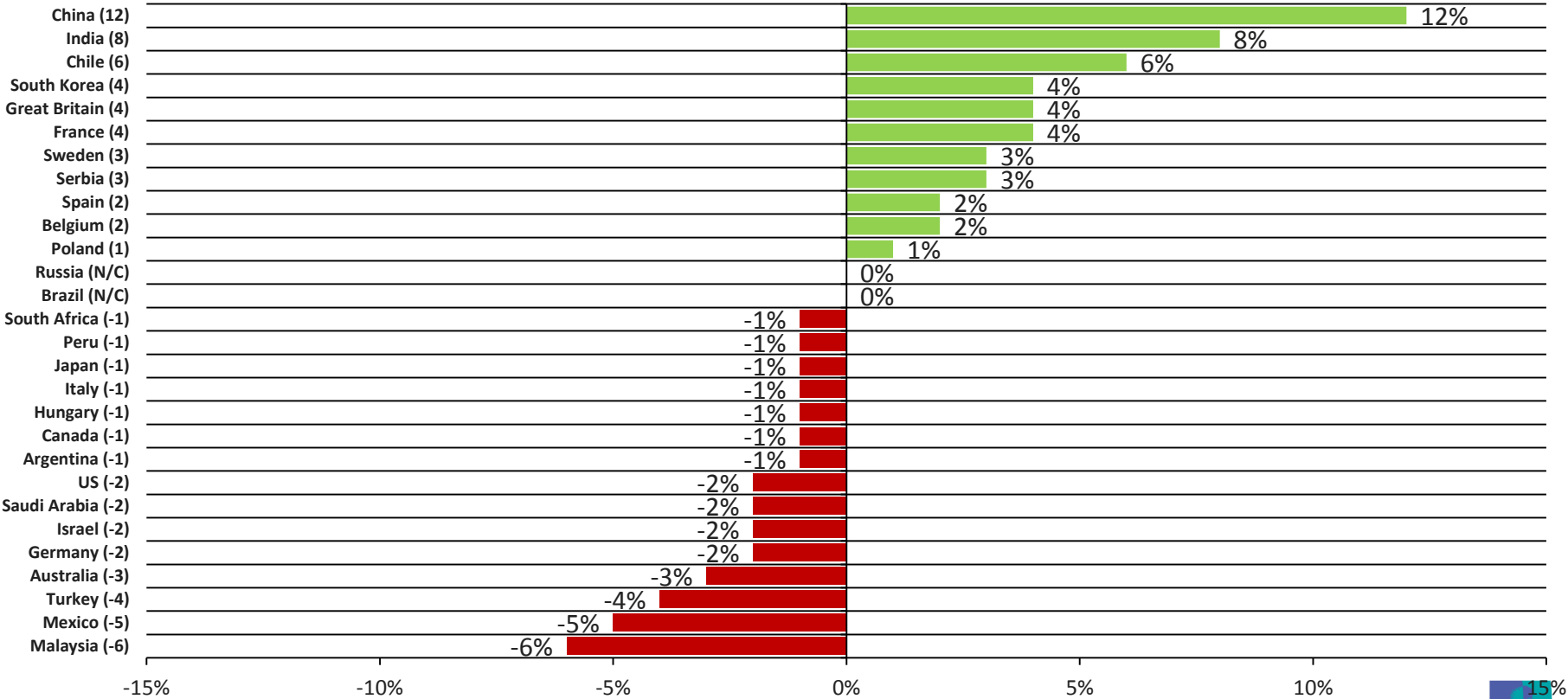
Rate the current state of the economy in your local area using a scale from 1 to 7, where 7 means a very strong economy today and 1 means a very weak economy...

Countries Ranked and Marked By Change In Assessment From Last Month (Left Column):



Rate the current state of the economy in your local area using a scale from 1 to 7, where 7 means a very strong economy today and 1 means a very weak economy...

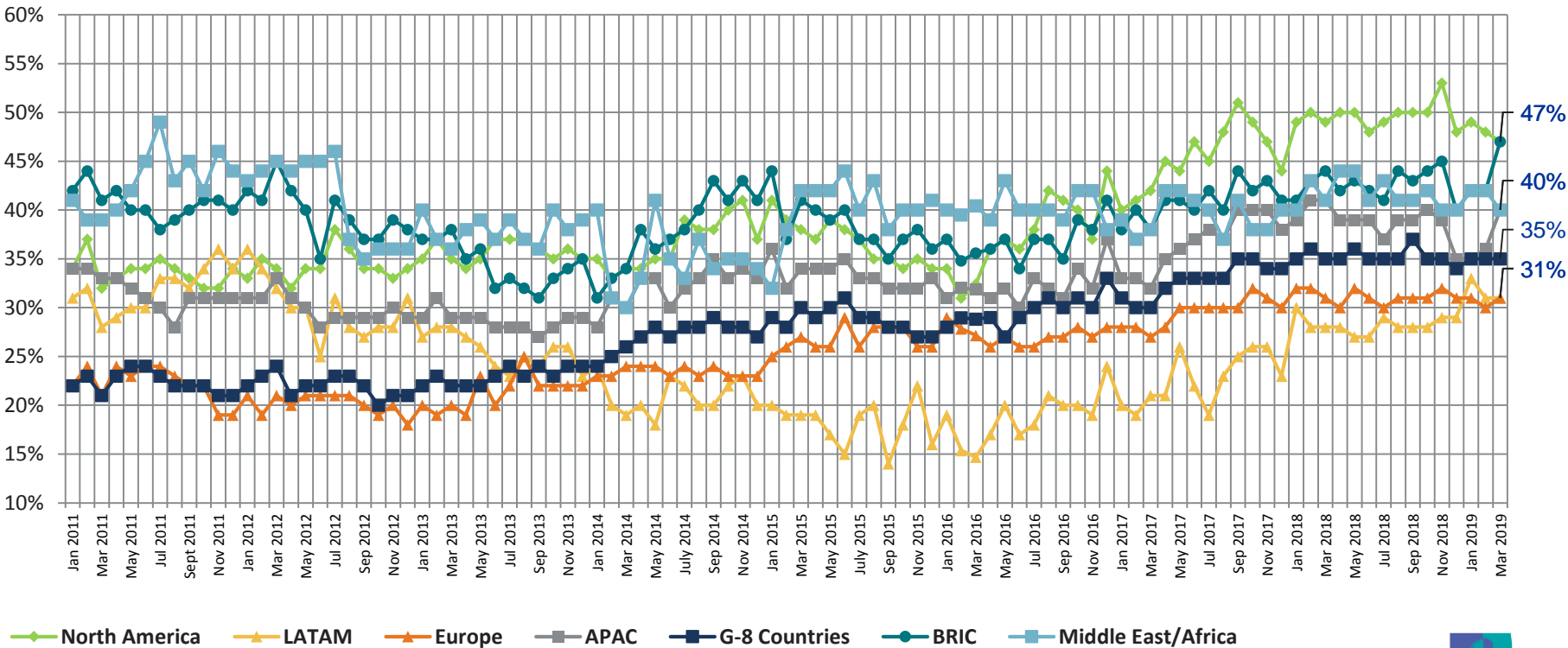
Countries Ranked by Net Improvement, Decline or No Change Compared to Last Month:



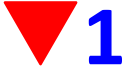
Rate the current state of the economy in your local area using a scale from 1 to 7, where 7 means a very strong economy today and 1 means a very weak economy.

All Regions - Assess the Strength of Their Local Economy

% Strong (Top 3 5-6-7)

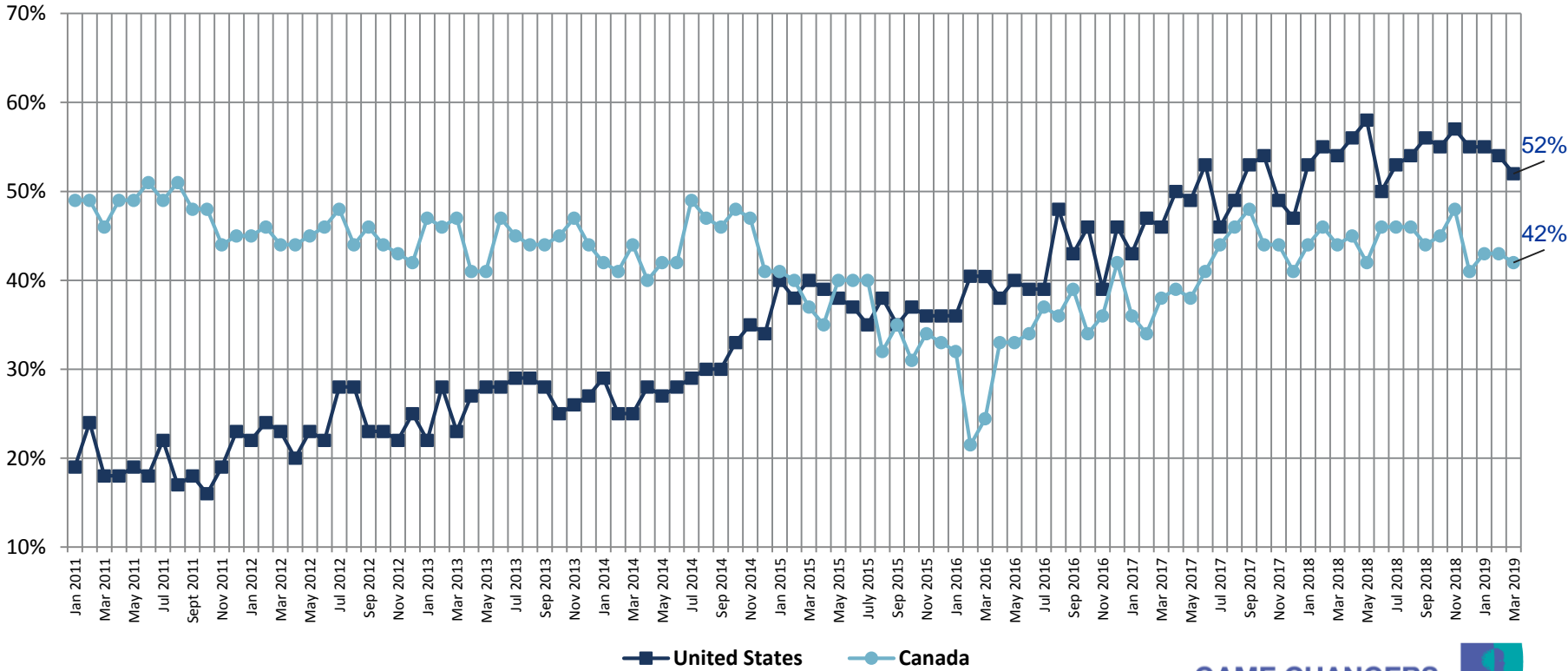


Rate the current state of the economy in your local area using a scale from 1 to 7, where 7 means a very strong economy today and 1 means a very weak economy.



North American Countries - Assess the Strength of Their Local Economy

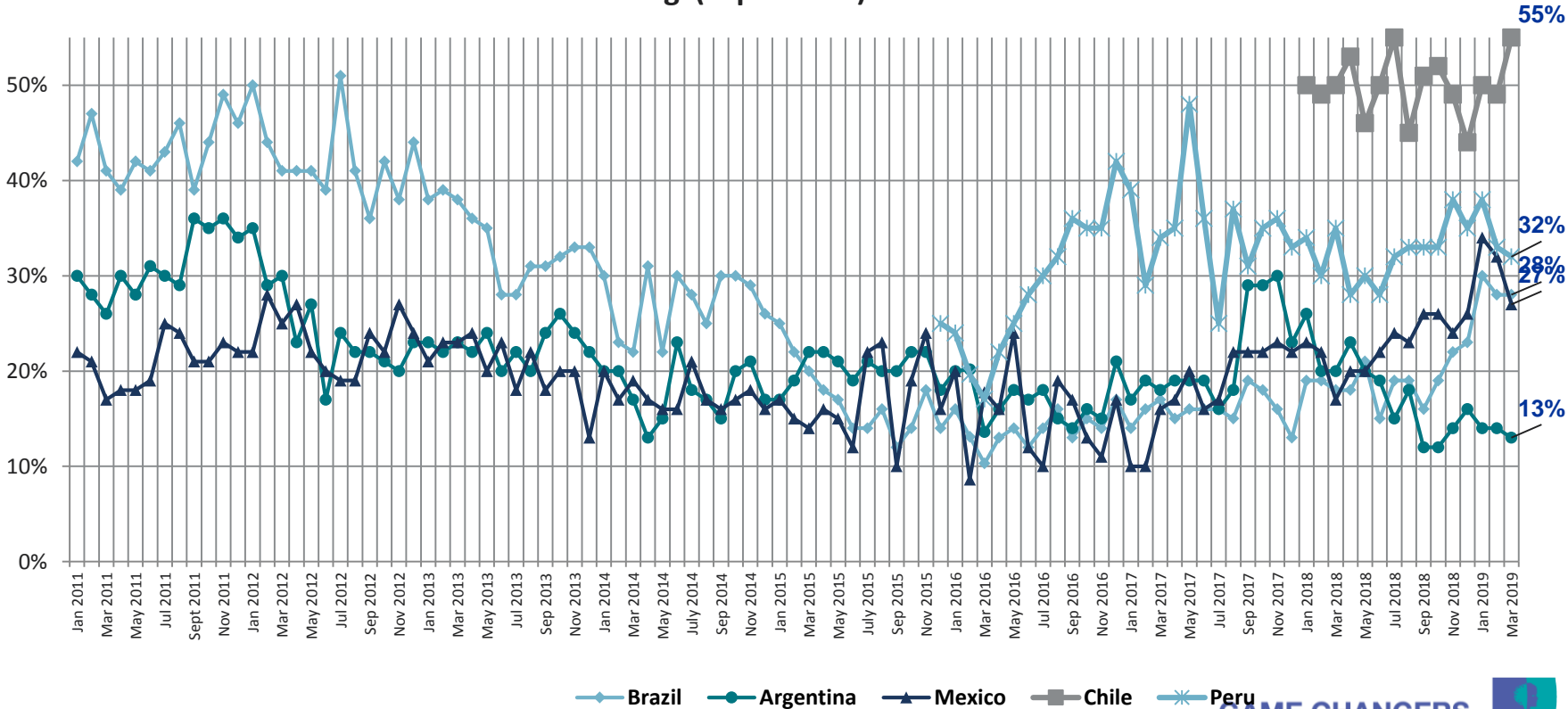
% Strong (Top 3 5-6-7)



Rate the current state of the economy in your local area using a scale from 1 to 7, where 7 means a very strong economy today and 1 means a very weak economy.

LATAM Countries - Assess the Strength of Their Local Economy

% Strong (Top 3 5-6-7)

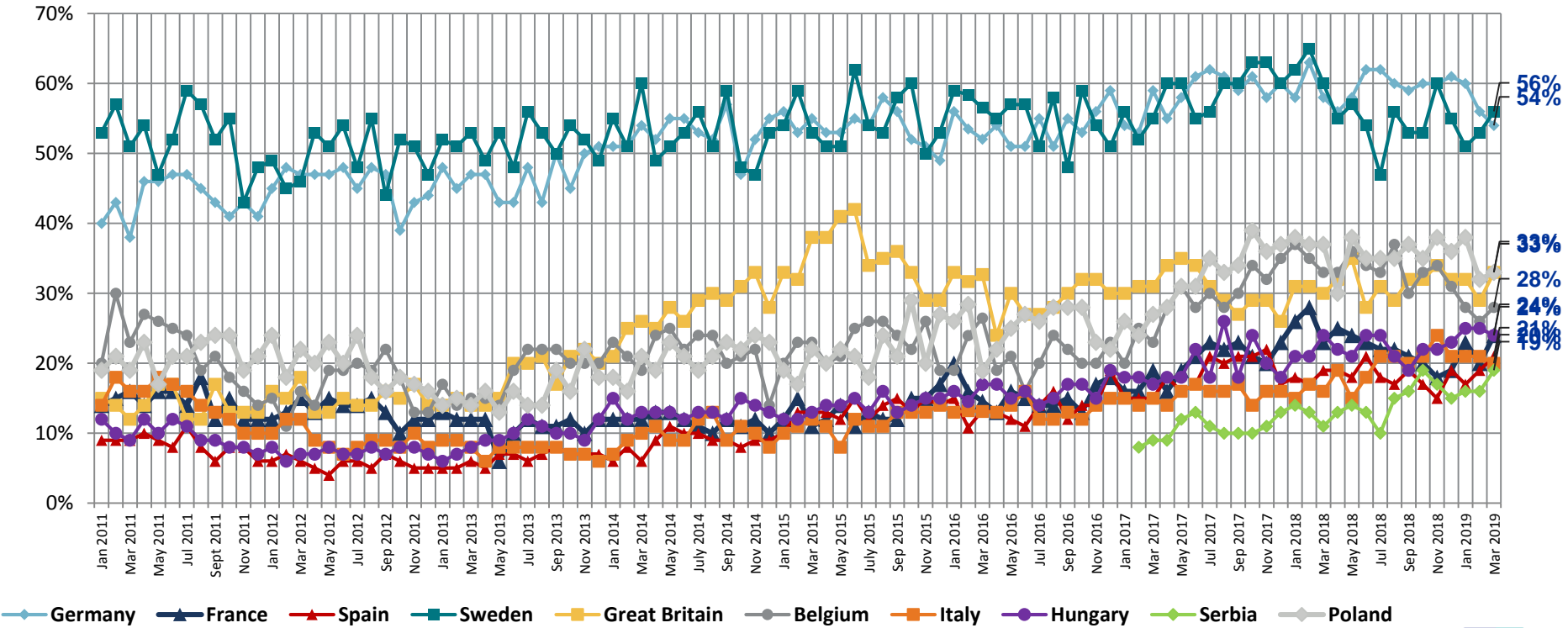


Rate the current state of the economy in your local area using a scale from 1 to 7, where 7 means a very strong economy today and 1 means a very weak economy.



European Countries - Assess the Strength of Their Local Economy

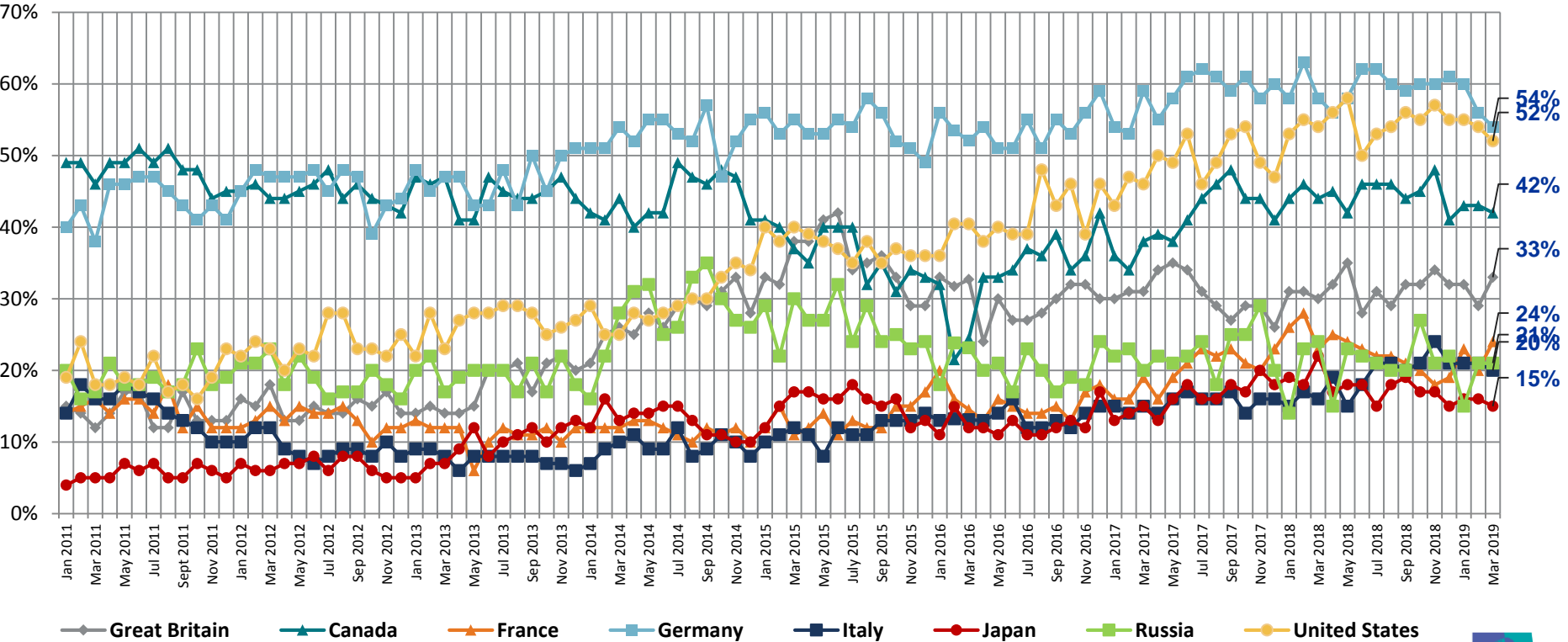
% Strong (Top 3 5-6-7)



Rate the current state of the economy in your local area using a scale from 1 to 7, where 7 means a very strong economy today and 1 means a very weak economy.

G8 Countries - Assess the Strength of Their Local Economy

% Strong (Top 3 5-6-7)

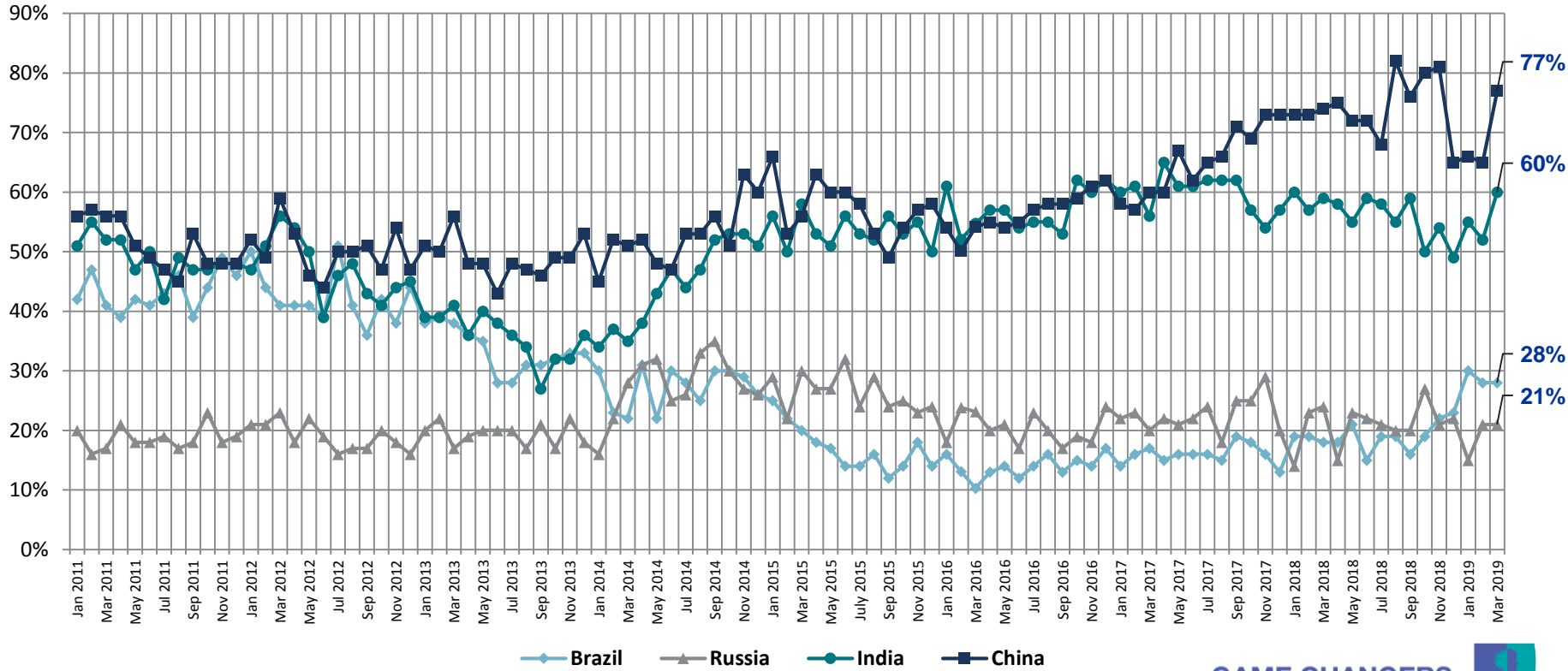


Rate the current state of the economy in your local area using a scale from 1 to 7, where 7 means a very strong economy today and 1 means a very weak economy.



BRIC Countries - Assess the Strength of Their Local Economy

% Strong (Top 3 5-6-7)

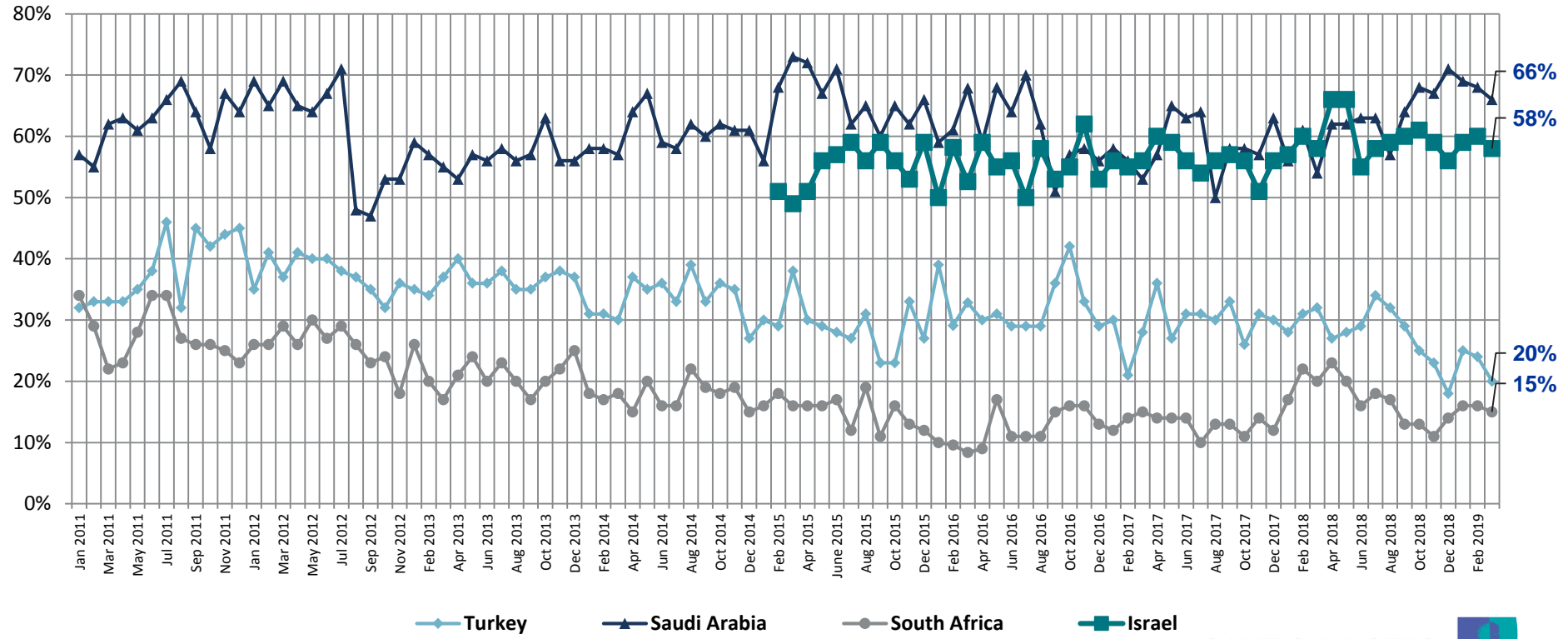


Rate the current state of the economy in your local area using a scale from 1 to 7, where 7 means a very strong economy today and 1 means a very weak economy.



Middle East/African Countries - Assess the Strength of Their Local Economy

% Strong (Top 3 5-6-7)



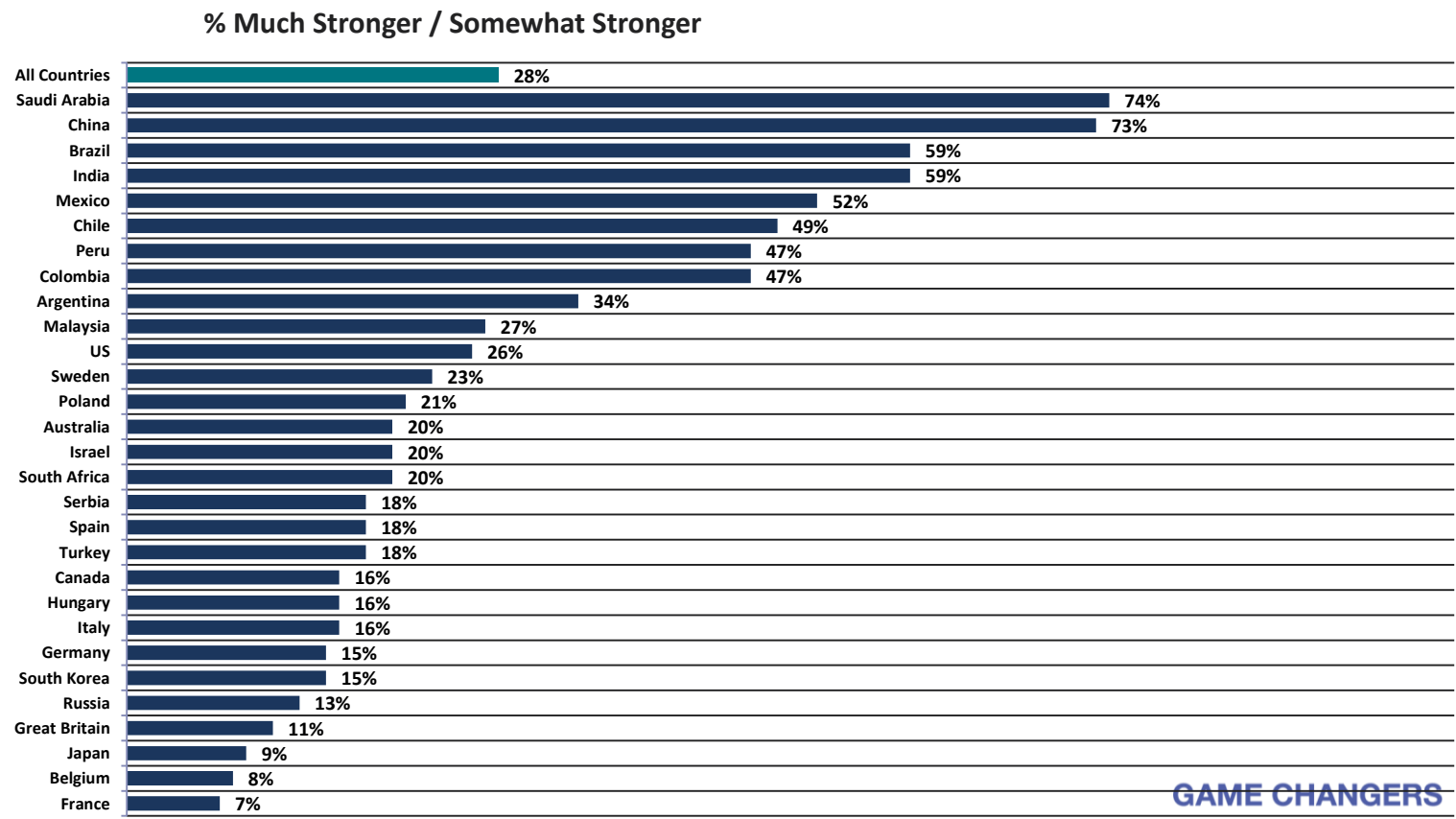
③ Assessing the Strength of The Local Economy...

...Six Months From Now

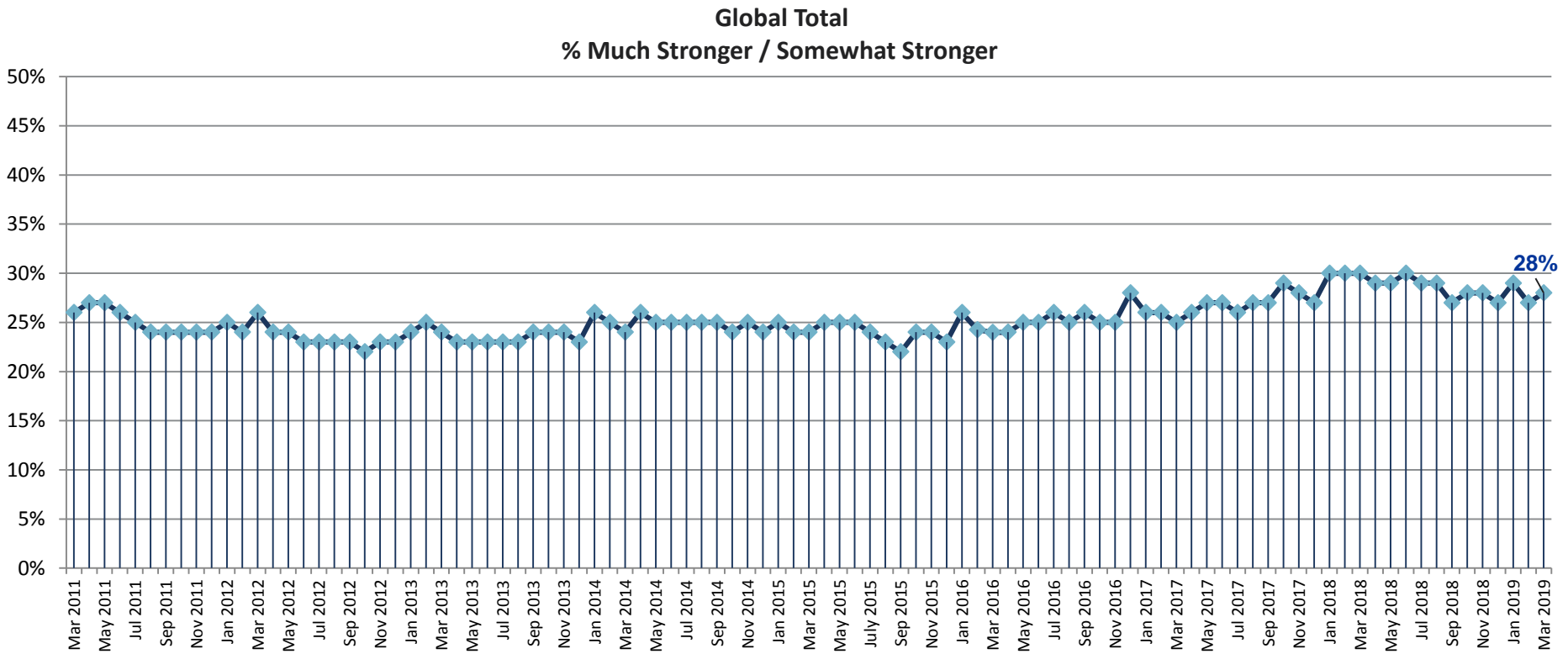


Looking ahead 6 months from now, do you expect the economy in your local area to be much stronger, somewhat stronger, about the same, somewhat weaker, or much weaker than it is now?

Citizen Consumers Who Say The Economy in the Local Area to be Stronger in The Next Six Months...




Citizen Consumers Who Say The Economy in the Local Area to be Stronger in The Next Six Months...



Looking ahead six months from now, do you expect the economy in your local area to be much stronger, somewhat stronger, about the same, somewhat weaker, or much weaker than it is now?
% Much Stronger / Somewhat Stronger

Citizen Consumers Who Say The Economy in the Local Area to be Stronger in The Next Six Months...

	Mar '16	Apr '16	May '16	Jun '16	Jul '16	Aug '16	Sep '16	Oct '16	Nov '16	Dec '16	Jan '17	Feb '17	Mar '17	Apr '17	May '17	Jun '17	Jul '17	Aug '17	Sep '17	Oct '17	Nov '17	Dec '17	Jan '18	Feb '18	Mar '18	Apr '18	May '18	Jun '18	Jul '18	Aug '18	Sep '18	Oct '18	Nov '18	Dec '18	Jan '19	Feb '19	Mar '19	
Total	24%	24%	25%	25%	26%	25%	26%	25%	25%	28%	26%	26%	25%	26%	27%	27%	26%	27%	27%	29%	28%	27%	30%	30%	30%	29%	29%	30%	29%	29%	27%	28%	28%	27%	29%	27%	28%	
Argentina	49%	53%	59%	57%	54%	52%	53%	50%	50%	52%	45%	46%	42%	49%	51%	44%	39%	43%	51%	54%	51%	44%	44%	42%	39%	42%	37%	38%	32%	35%	33%	37%	35%	40%	36%	34%	34%	
Australia	12%	14%	18%	17%	18%	16%	14%	14%	15%	15%	17%	16%	17%	17%	16%	16%	14%	19%	16%	27%	21%	17%	17%	20%	22%	16%	19%	18%	19%	16%	18%	16%	18%	19%	18%	20%		
Belgium	12%	7%	11%	8%	8%	12%	8%	6%	8%	9%	12%	11%	10%	13%	12%	10%	15%	15%	14%	14%	18%	22%	21%	15%	12%	15%	12%	13%	11%	14%	8%	11%	8%	7%	7%	8%	8%	
Brazil	53%	54%	54%	55%	57%	56%	59%	59%	59%	54%	59%	62%	58%	55%	48%	55%	52%	50%	49%	57%	51%	53%	53%	58%	54%	54%	54%	46%	49%	50%	49%	58%	67%	63%	67%	64%	59%	
Canada	16%	19%	20%	17%	18%	16%	17%	15%	16%	27%	18%	16%	18%	18%	18%	17%	18%	21%	20%	22%	23%	18%	22%	24%	18%	18%	18%	20%	18%	20%	15%	18%	20%	14%	14%	16%	16%	
Chile																							61%	60%	56%	59%	55%	55%	52%	45%	51%	49%	49%	43%	45%	40%	49%	
China	47%	49%	44%	49%	52%	50%	52%	53%	49%	56%	53%	52%	57%	53%	56%	54%	48%	58%	60%	59%	64%	62%	61%	57%	59%	57%	59%	54%	52%	54%	72%	65%	76%	74%	51%	63%	60%	73%
France	5%	6%	8%	5%	6%	5%	5%	5%	6%	11%	8%	8%	7%	6%	9%	12%	12%	13%	11%	14%	10%	13%	16%	16%	13%	11%	11%	9%	9%	9%	7%	8%	7%	6%	6%	6%	7%	
Germany	12%	15%	13%	16%	18%	13%	15%	13%	15%	26%	19%	17%	17%	19%	19%	19%	17%	17%	21%	26%	24%	20%	25%	24%	16%	19%	18%	16%	16%	18%	17%	15%	18%	17%	13%	15%	15%	
Great Britain	12%	10%	12%	10%	12%	14%	12%	12%	12%	12%	13%	15%	11%	12%	14%	12%	11%	11%	10%	13%	10%	13%	12%	12%	14%	12%	19%	12%	13%	12%	10%	12%	14%	12%	11%	11%	11%	
Hungary	11%	12%	9%	11%	12%	11%	13%	11%	9%	13%	15%	13%	11%	10%	15%	14%	12%	15%	14%	14%	12%	8%	14%	17%	18%	31%	15%	16%	16%	14%	19%	14%	13%	14%	12%	15%	16%	
India	65%	63%	59%	61%	62%	60%	60%	62%	66%	67%	65%	67%	62%	69%	70%	66%	64%	65%	65%	62%	56%	63%	62%	60%	62%	58%	57%	56%	58%	58%	56%	50%	54%	51%	55%	54%	59%	
Israel	13%	9%	14%	17%	12%	14%	18%	13%	13%	10%	9%	17%	16%	12%	16%	15%	15%	16%	12%	10%	15%	14%	18%	17%	18%	19%	17%	19%	15%	17%	13%	15%	18%	15%	17%	18%	20%	
Italy	11%	11%	9%	12%	9%	8%	10%	9%	9%	10%	10%	8%	11%	8%	8%	12%	9%	9%	7%	11%	12%	8%	10%	13%	15%	15%	10%	21%	25%	21%	19%	21%	20%	17%	17%	13%	16%	
Japan	9%	10%	7%	9%	9%	8%	10%	11%	9%	14%	9%	11%	11%	9%	11%	12%	11%	10%	11%	13%	15%	14%	16%	12%	14%	13%	12%	12%	11%	11%	15%	11%	11%	10%	11%	9%		
Malaysia																							25%	23%	26%	23%	26%	57%	51%	38%	39%	33%	35%	26%	33%	34%	27%	
Mexico	31%	26%	27%	30%	27%	28%	32%	27%	22%	25%	20%	20%	27%	26%	28%	27%	23%	29%	29%	31%	30%	26%	31%	35%	28%	33%	35%	37%	47%	53%	47%	49%	39%	56%	57%	52%	52%	
Peru	48%	47%	58%	58%	67%	69%	65%	60%	64%	58%	52%	46%	54%	48%	53%	54%	53%	57%	51%	52%	49%	49%	49%	50%	46%	53%	52%	47%	42%	53%	51%	55%	49%	53%	58%	56%	47%	
Poland	14%	18%	16%	18%	18%	18%	15%	17%	14%	13%	18%	16%	21%	20%	23%	23%	21%	24%	29%	24%	27%	23%	31%	24%	25%	22%	27%	26%	24%	26%	25%	24%	27%	24%	26%	24%	21%	
Russia	24%	21%	22%	20%	18%	16%	18%	17%	19%	21%	22%	22%	19%	18%	19%	19%	18%	19%	19%	30%	25%	17%	16%	19%	20%	24%	19%	20%	16%	16%	13%	12%	15%	14%	14%	13%	13%	
Saudi Arabia	52%	51%	62%	58%	64%	52%	47%	48%	55%	55%	55%	51%	49%	52%	64%	55%	52%	45%	52%	55%	56%	57%	53%	55%	53%	57%	61%	61%	56%	58%	59%	66%	68%	68%	68%	67%	74%	
Serbia												11%	15%	20%	18%	15%	19%	16%	15%	15%	16%	16%	17%	18%	19%	19%	20%	22%	22%	20%	15%	14%	12%	14%	18%	18%	18%	
South Africa	13%	15%	18%	16%	16%	16%	20%	22%	13%	16%	13%	19%	16%	16%	13%	14%	14%	16%	12%	14%	11%	13%	32%	38%	47%	30%	25%	22%	20%	20%	17%	19%	19%	20%	25%	22%	20%	
South Korea	10%	10%	12%	10%	9%	10%	9%	9%	5%	17%	8%	10%	10%	13%	13%	37%	32%	30%	24%	22%	24%	33%	25%	24%	24%	24%	33%	27%	22%	14%	16%	20%	17%	14%	18%	16%	15%	
Spain	19%	19%	14%	17%	16%	18%	15%	15%	18%	26%	20%	19%	18%	20%	23%	21%	18%	21%	18%	22%	20%	19%	17%	19%	17%	21%	17%	27%	22%	18%	17%	17%	15%	17%	18%	22%	18%	
Sweden	10%	11%	14%	12%	16%	11%	15%	12%	11%	18%	20%	10%	16%	22%	27%	17%	14%	27%	24%	27%	31%	16%	24%	25%	28%	14%	16%	20%	13%	16%	23%	14%	10%	16%	21%	16%	23%	
Turkey	24%	27%	24%	25%	26%	31%	32%	38%	32%	31%	31%	25%	27%	34%	31%	26%	30%	32%	31%	25%	27%	28%	27%	30%	33%	25%	29%	33%	33%	36%	25%	26%	25%	21%	26%	23%	18%	
United States	26%	27%	29%	29%	31%	33%	31%	31%	25%	38%	38%	42%	40%	39%	37%	39%	34%	31%	36%	34%	33%	33%	35%	39%	34%	34%	37%	28%	31%	32%	29%	27%	32%	28%	31%	29%	26%	

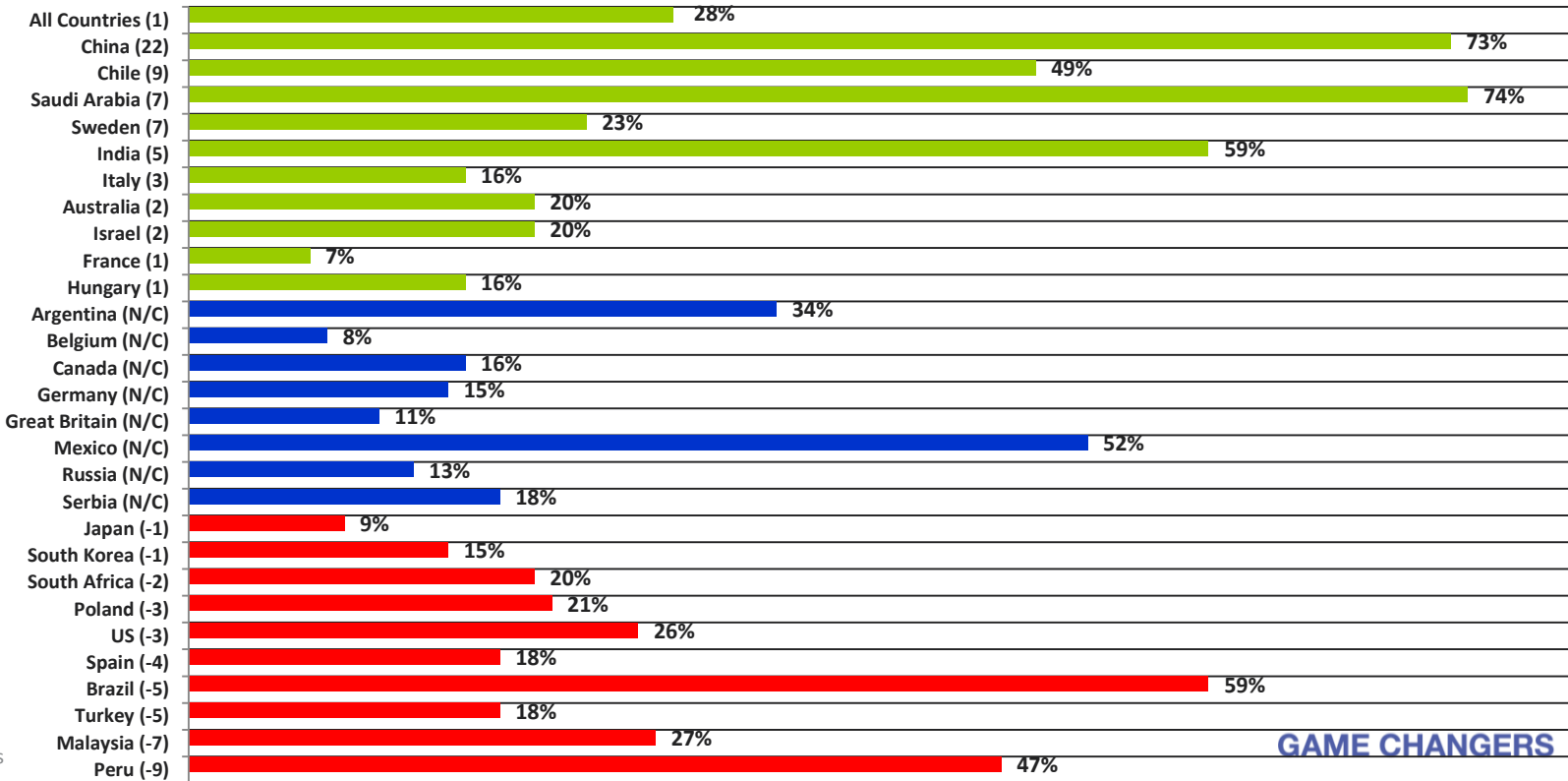
4

Looking ahead six months from now, do you expect the economy in your local area to be much stronger, somewhat stronger, about the same, somewhat weaker, or much weaker than it is now?

Countries Ranked and Marked By Change In Assessment From Last Month (Left Column):

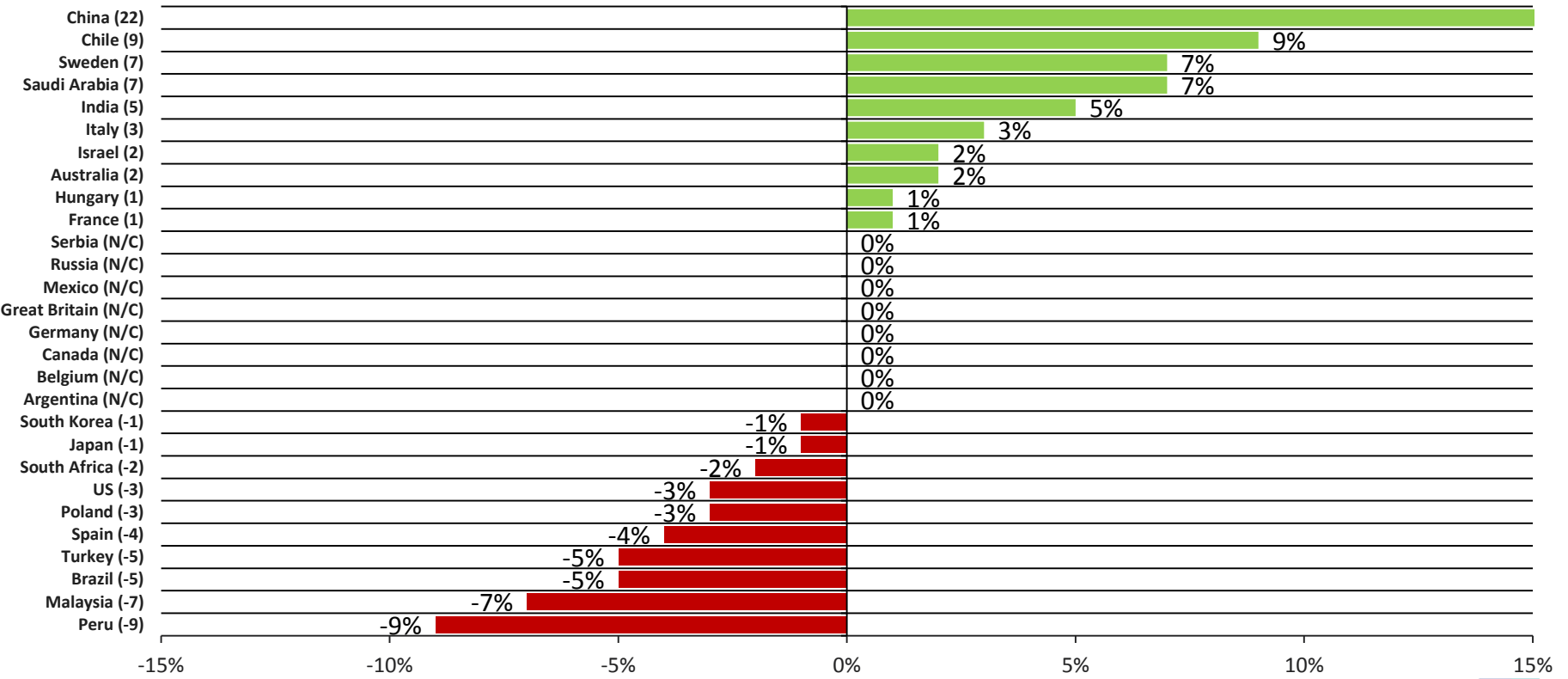
Green marks countries experiencing improvement;
Blue marks countries with no change from last month;
Red marks countries experiencing a decline;

% Very Good / Somewhat Good



Looking ahead six months from now, do you expect the economy in your local area to be much stronger, somewhat stronger, about the same, somewhat weaker, or much weaker than it is now?

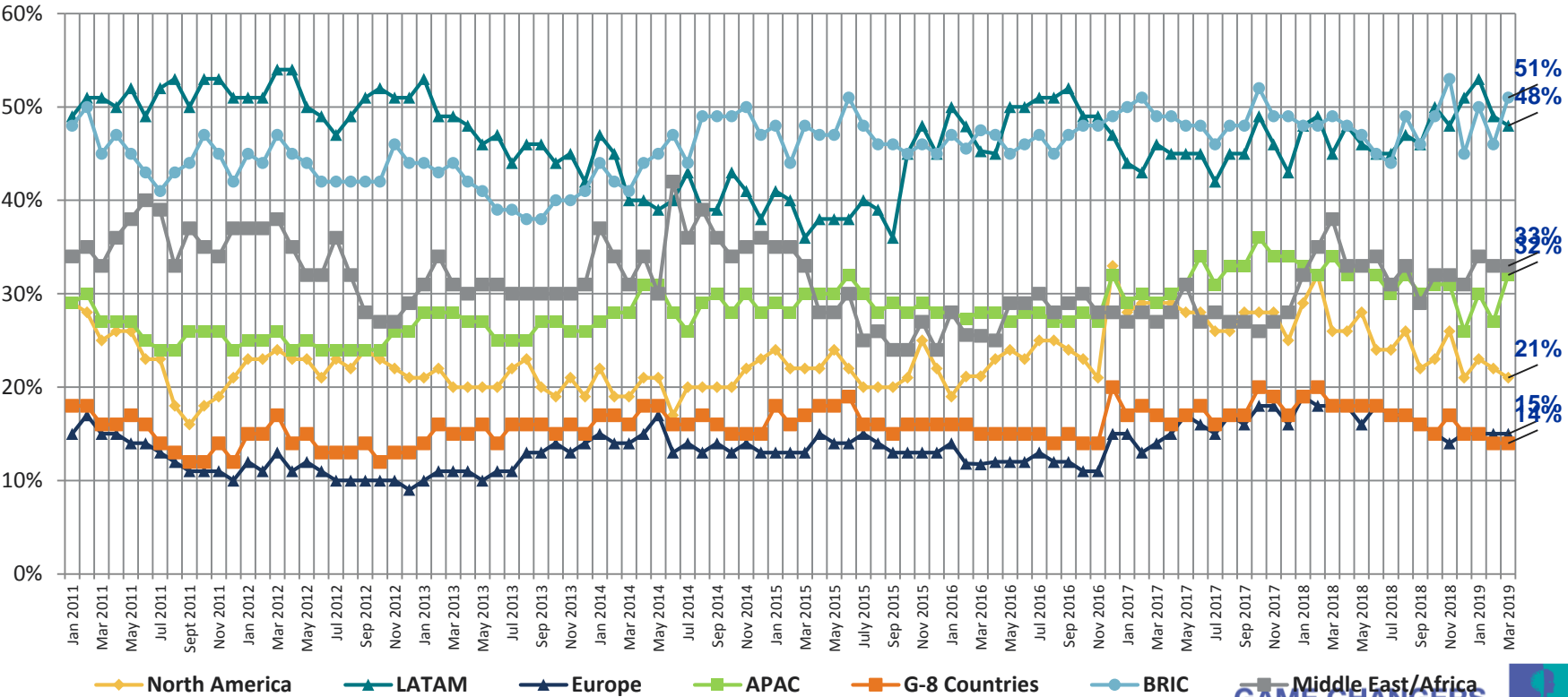
Countries Ranked by Net Improvement, Decline or No Change Compared to Last Month:



Looking ahead 6 months from now, do you expect the economy in your local area to be much stronger, somewhat stronger, about the same, somewhat weaker, or much weaker than it is now?

All Regions - Citizen Consumers Who Say The Economy in the Local Area to be Stronger in The Next Six Months

% Much Stronger / Somewhat Stronger

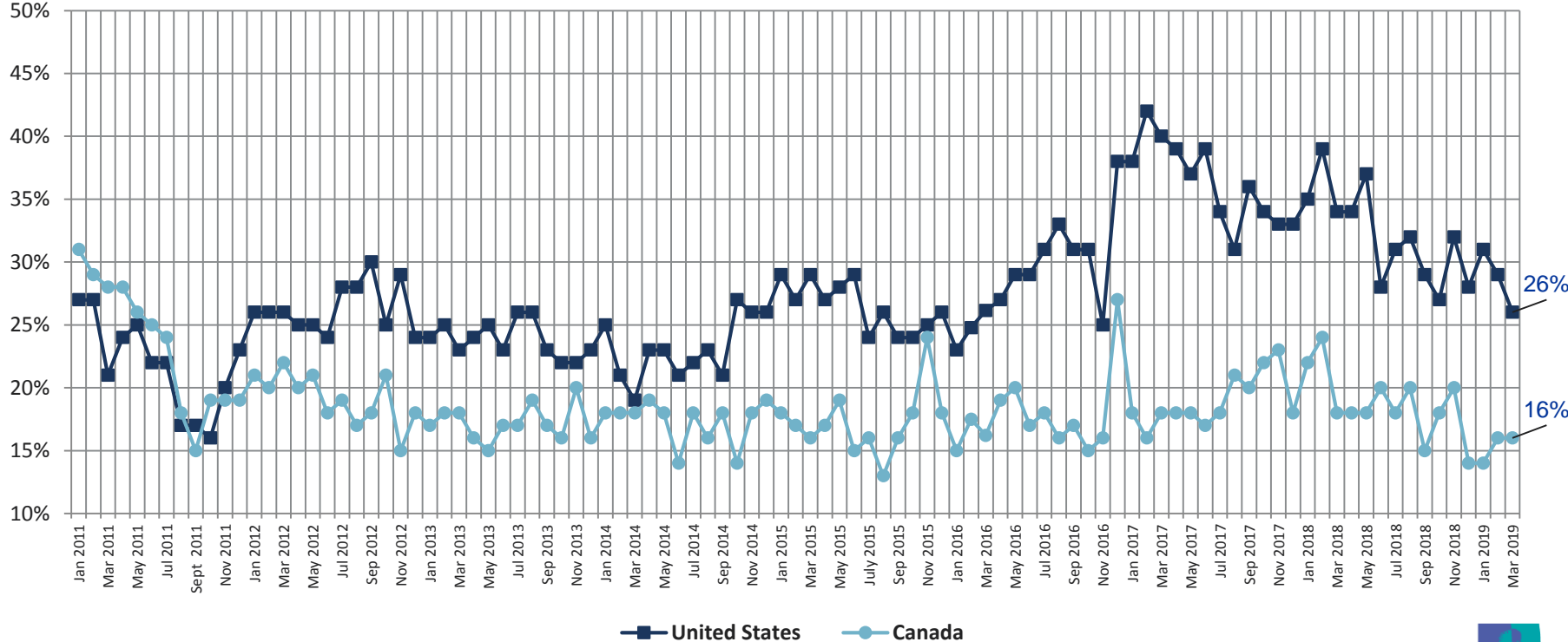


Looking ahead 6 months from now, do you expect the economy in your local area to be much stronger, somewhat stronger, about the same, somewhat weaker, or much weaker than it is now?

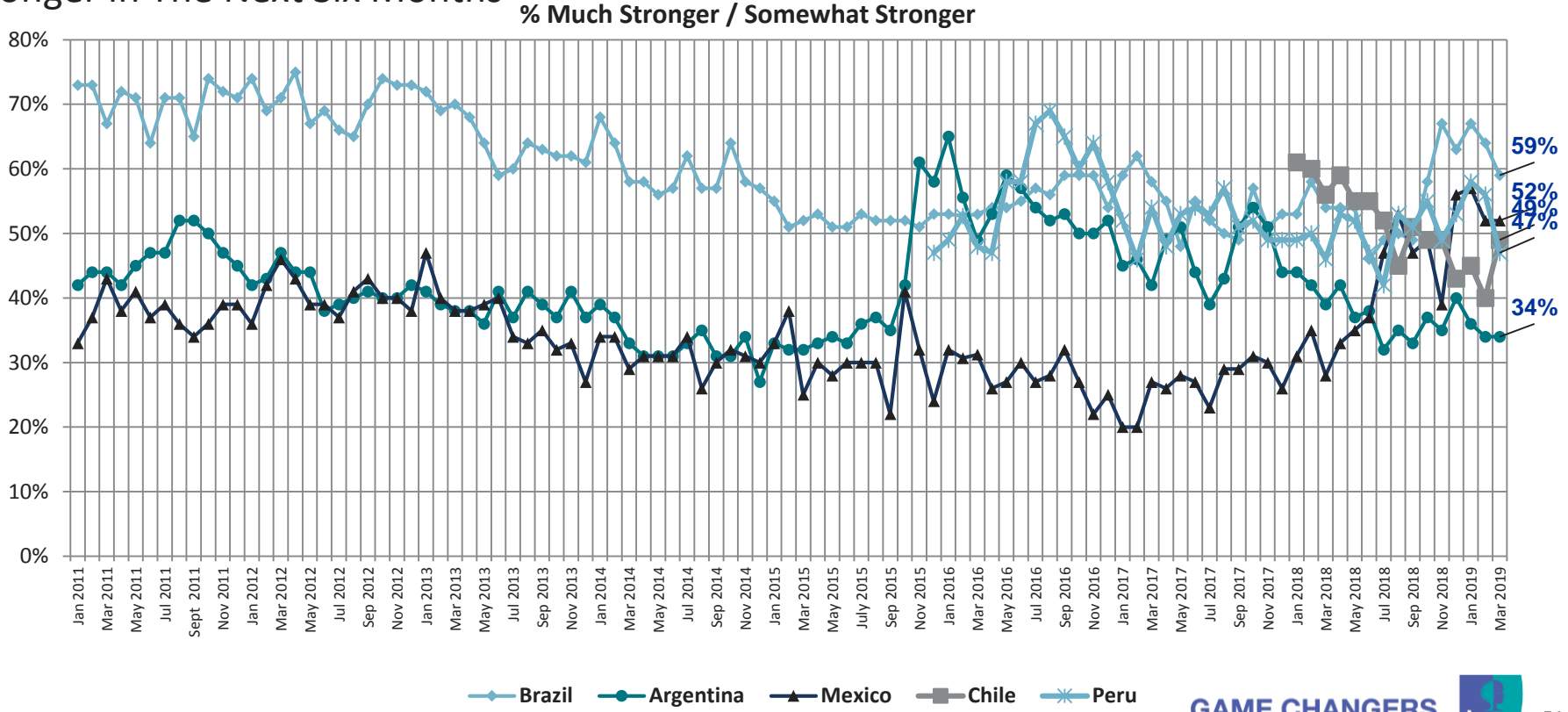


North American Countries - Citizen Consumers Who Say The Economy in the Local Area to be Stronger in The Next Six Months

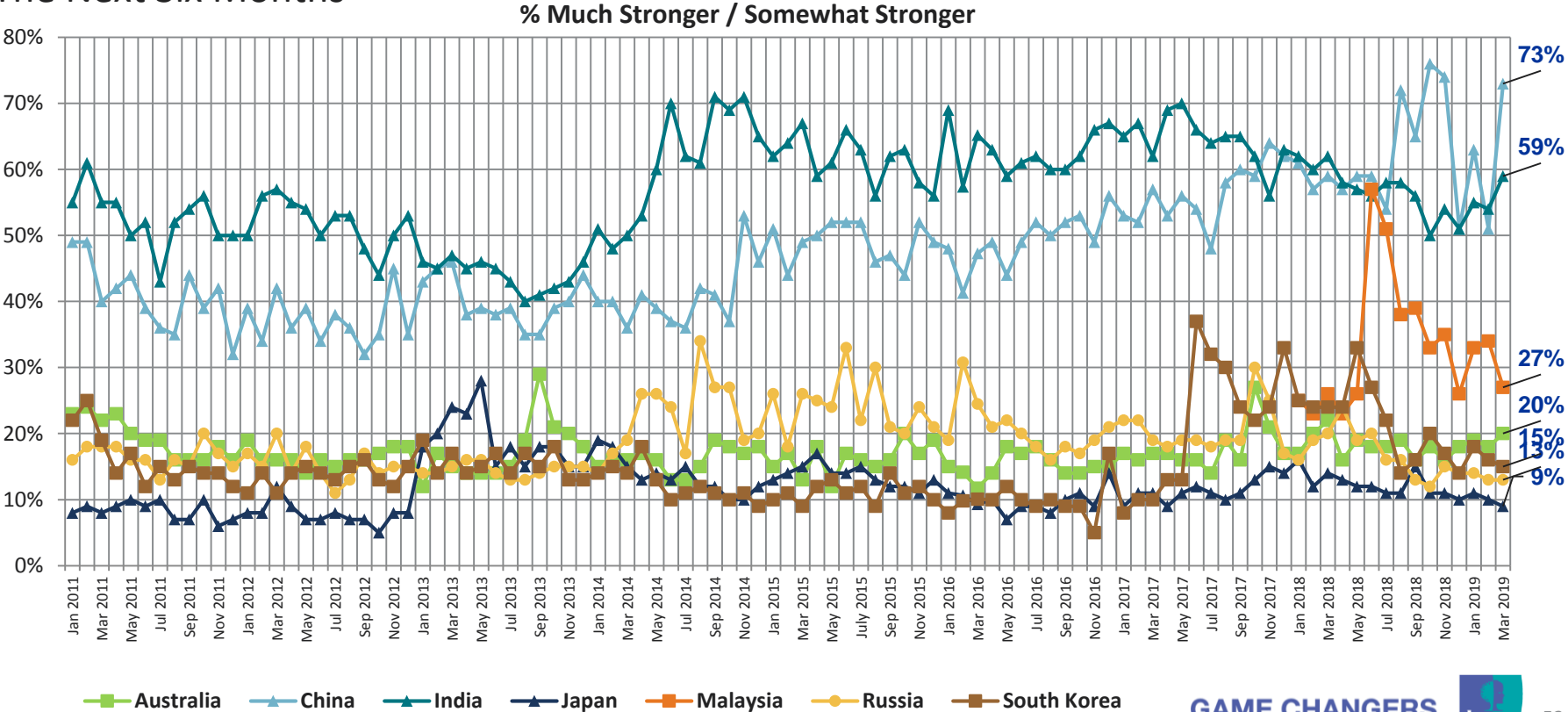
% Much Stronger / Somewhat Stronger



LATAM Countries - Citizen Consumers Who Say The Economy in the Local Area to be Stronger in The Next Six Months



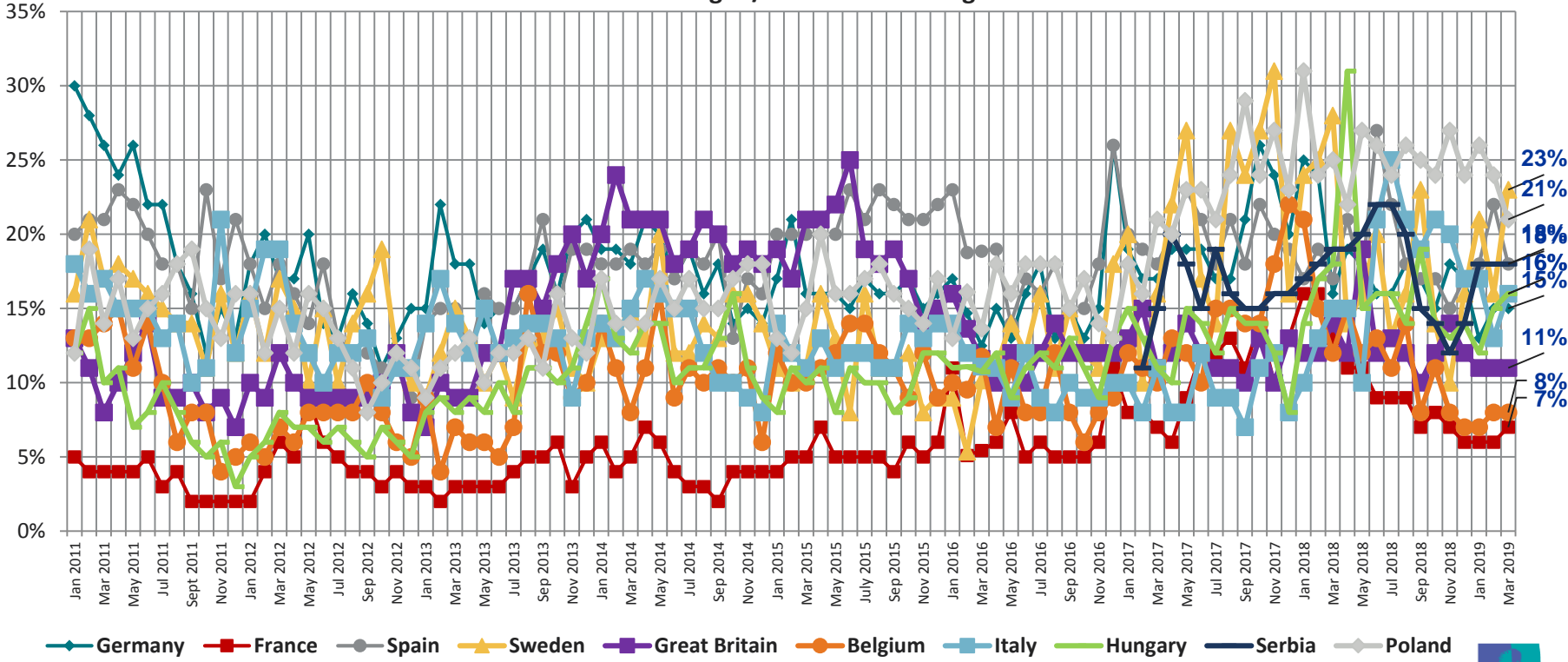
APAC Countries - Citizen Consumers Who Say The Economy in the Local Area to be Stronger in The Next Six Months



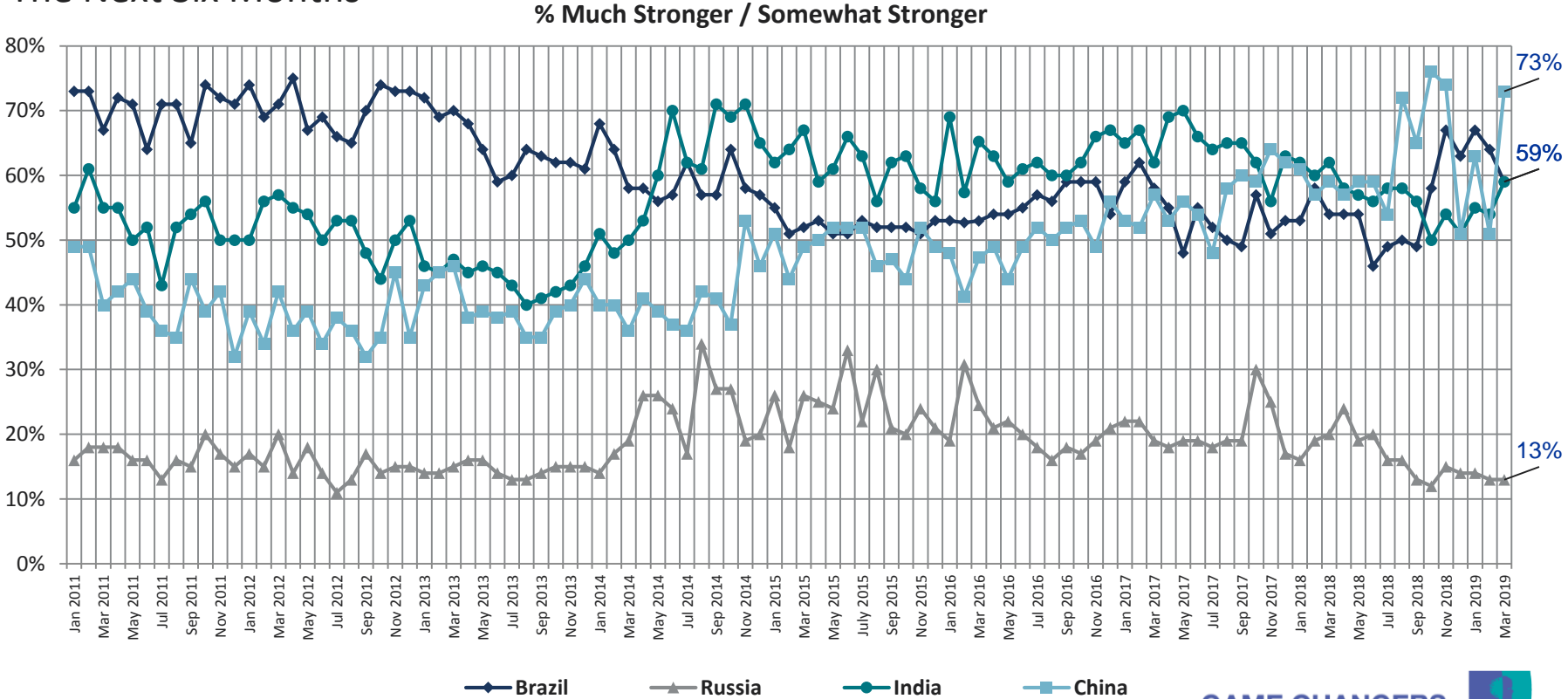
Looking ahead 6 months from now, do you expect the economy in your local area to be much stronger, somewhat stronger, about the same, somewhat weaker, or much weaker than it is now?

European Countries - Citizen Consumers Who Say The Economy in the Local Area to be Stronger in The Next Six Months

% Much Stronger / Somewhat Stronger

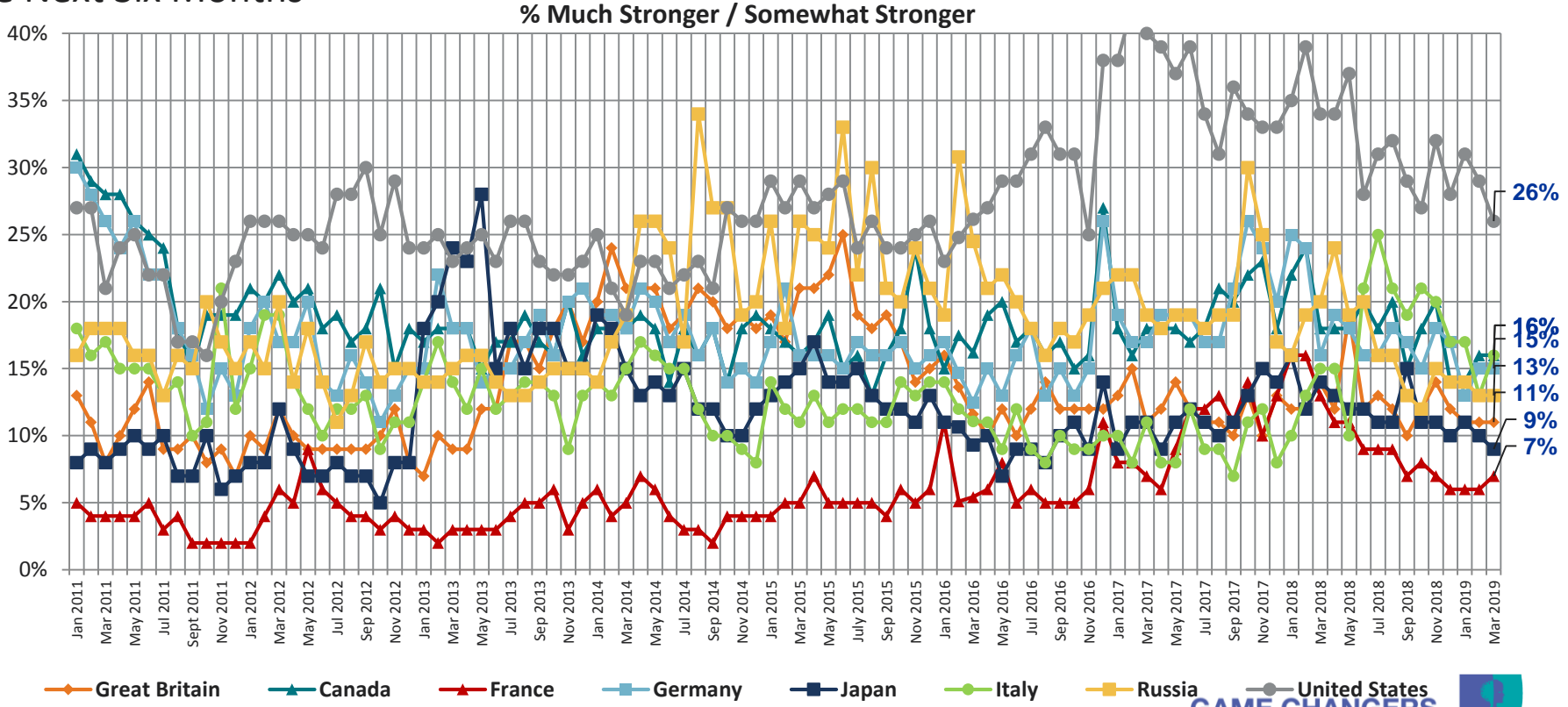


BRIC Countries - Citizen Consumers Who Say The Economy in the Local Area to be Stronger in The Next Six Months



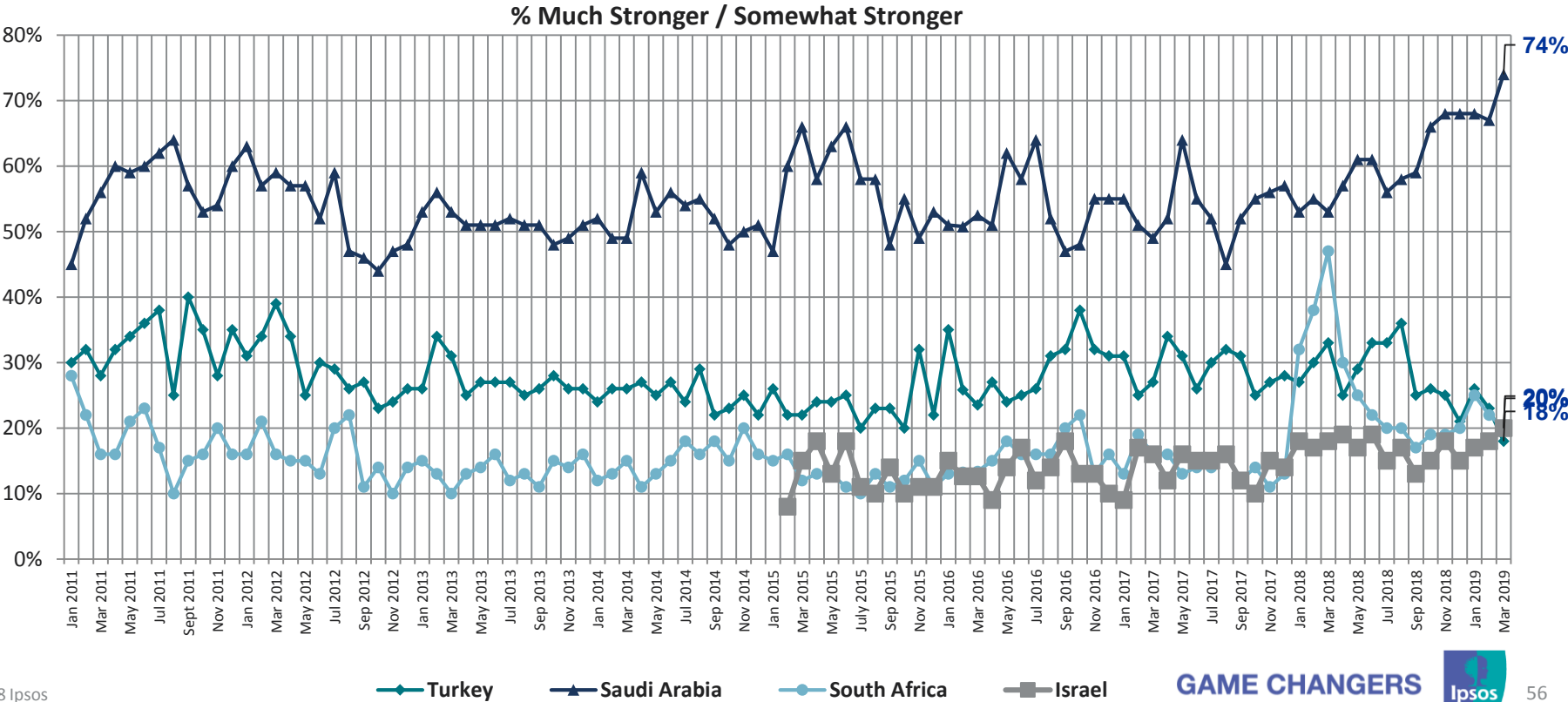
Looking ahead 6 months from now, do you expect the economy in your local area to be much stronger, somewhat stronger, about the same, somewhat weaker, or much weaker than it is now?

G8 Countries - Citizen Consumers Who Say The Economy in the Local Area to be Stronger in The Next Six Months



Looking ahead 6 months from now, do you expect the economy in your local area to be much stronger, somewhat stronger, about the same, somewhat weaker, or much weaker than it is now?

Middle East/African Countries - Citizen Consumers Who Say The Economy in the Local Area to be Stronger in The Next Six Months



About Ipsos

- Ipsos is an independent market research company controlled and managed by research professionals. Founded in France in 1975, Ipsos has grown into a worldwide research group with a strong presence in all key markets. Ipsos ranks third in the global research industry.
- With offices in 87 countries, Ipsos delivers insightful expertise across five research specializations: brand, advertising and media, customer loyalty, marketing, public affairs research, and survey management.
- Ipsos researchers assess market potential and interpret market trends. They develop and build brands. They help clients build long-term relationships with their customers. They test advertising and study audience responses to various media and they measure public opinion around the globe.
- Ipsos has been listed on the Paris Stock Exchange since 1999 and generated global revenues €1,780.5 in 2017.
- Visit www.ipsos.com to learn more about Ipsos' offerings and capabilities.

For information about this and other *Global @dvisor* products contact <http://www.ipsosglobaladvisor.com/> or:

- **Julia Clark**
Senior Vice President
Ipsos Public Affairs +1 (312) 526-4919
julia.clark@ipsos.com
- **Nik Samoylov**
Director
Ipsos Public Affairs +1 (416) 572-4471
nik.samoylov@ipsos.com
- The Ipsos *Global @dvisor* Syndicate Study is a monthly, online survey of consumer citizens in 28 countries and produces syndicated reports and studies specifically tailored to the needs of corporations, advertising and PR agencies, and governments. For information contact:
- **Chris Deeney**
Senior Vice President and Managing Director
Ipsos Public Affairs +1 (312) 526-4088
chris.deeney@ipsos.com
- Visit www.ipsos.com for information about all of our products and services.

Copyright Ipsos 2018. All rights reserved. The contents of this publication constitute the sole and exclusive property of Ipsos.