

IPSOS MORI POLITICAL MONITOR

MARCH 2020

Ipsos MORI



VOTING INTENTION

POLLING
STATION

WAY IN

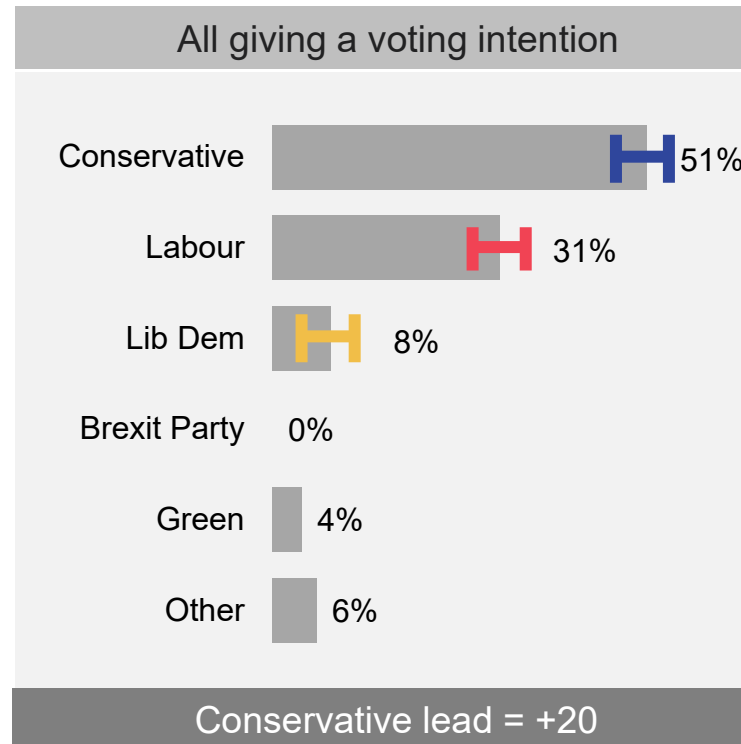
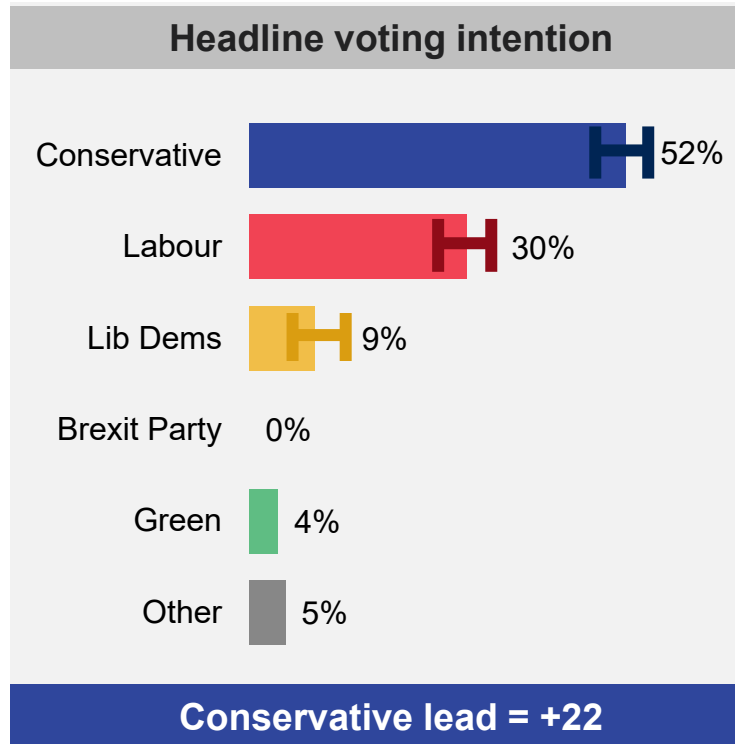
WAY IN

Ipsos MORI



Voting Intention: March 2020

How do you intend to vote in the General Election? Will you vote...?

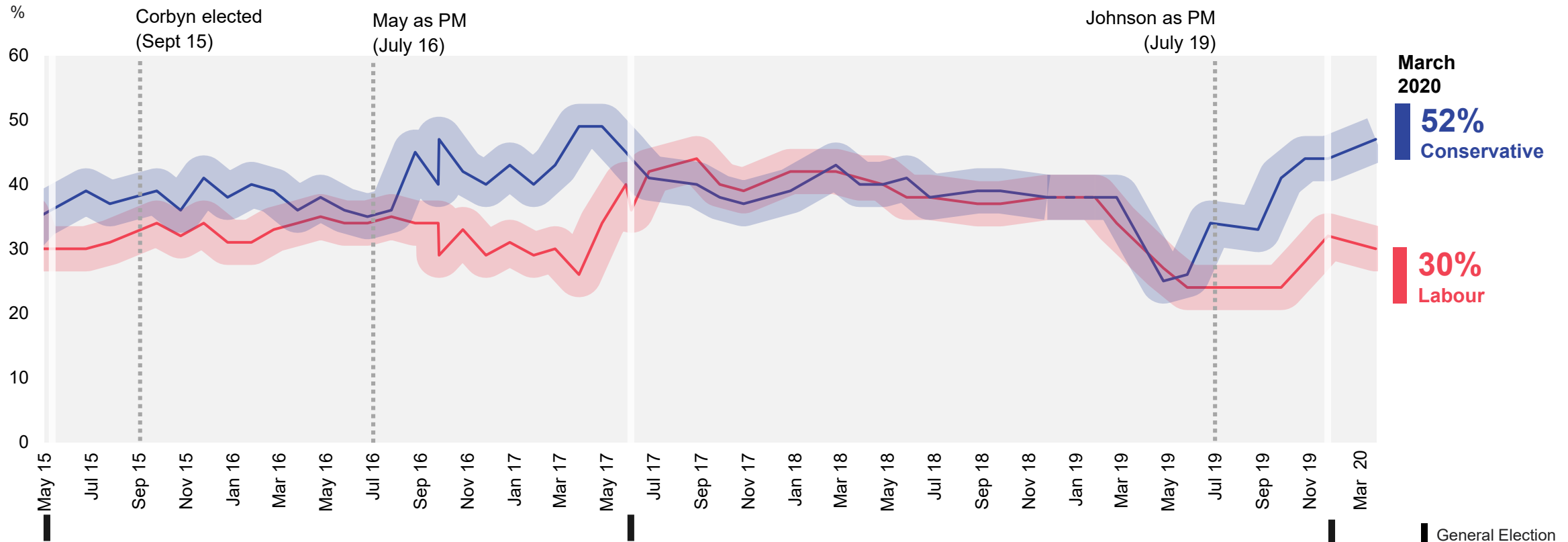


Base: 1,003 British adults 18+, 13 – 16 March 2020; Headline Voting Intention: all 9/10 certain to vote, always/usually/it depends vote in General Elections = 713. Margin of error is displayed at +/- 4% All polls are subject to a wide range of potential sources of error. On the basis of the historical record of the polls at recent general elections, there is a 9 in 10 chance that the true value of a party's support lies within 4 points of the estimates provided by this poll, and a 2 in 3 chance that they lie within 2 points. This is especially important to keep in mind when calculating party lead figures.

Source: Ipsos MORI Political Monitor

Headline voting intention: 2015 General Election

How would you vote if there were an election tomorrow?

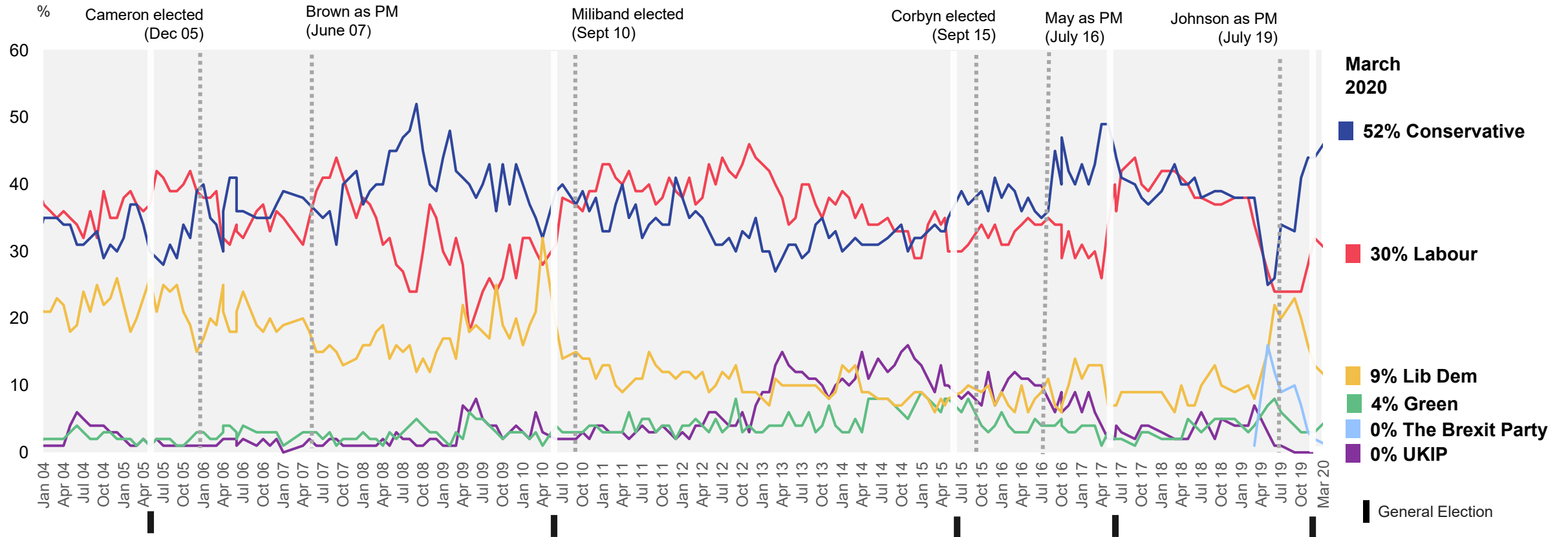


Base: c. 800 British adults; Prior to July 2015 the turnout filter is "All certain to vote"; From July 2015 turnout filter is "all 9/10 certain to vote and always/usually/it depends vote in General Elections. Note small change in methodology in approach to prompting Brexit Party in July 2019

Source: Ipsos MORI Political Monitor

Headline voting intention: January '04 – March '20

How would you vote if there were an election tomorrow?



Base: c. 800 British adults; Prior to July 2015 the turnout filter is "All certain to vote"; From July 2015 turnout filter is "all 9/10 certain to vote and always/usually/it depends vote in General Elections. Note small change in methodology in approach to prompting Brexit Party in July 2019

Source: Ipsos MORI Political Monitor

A row of six colorful beach huts (teal, red, blue, yellow, orange, and green) stands on a pebble beach under a clear blue sky. The huts are arranged in a line, and the text is overlaid on the first three huts.

SATISFACTION

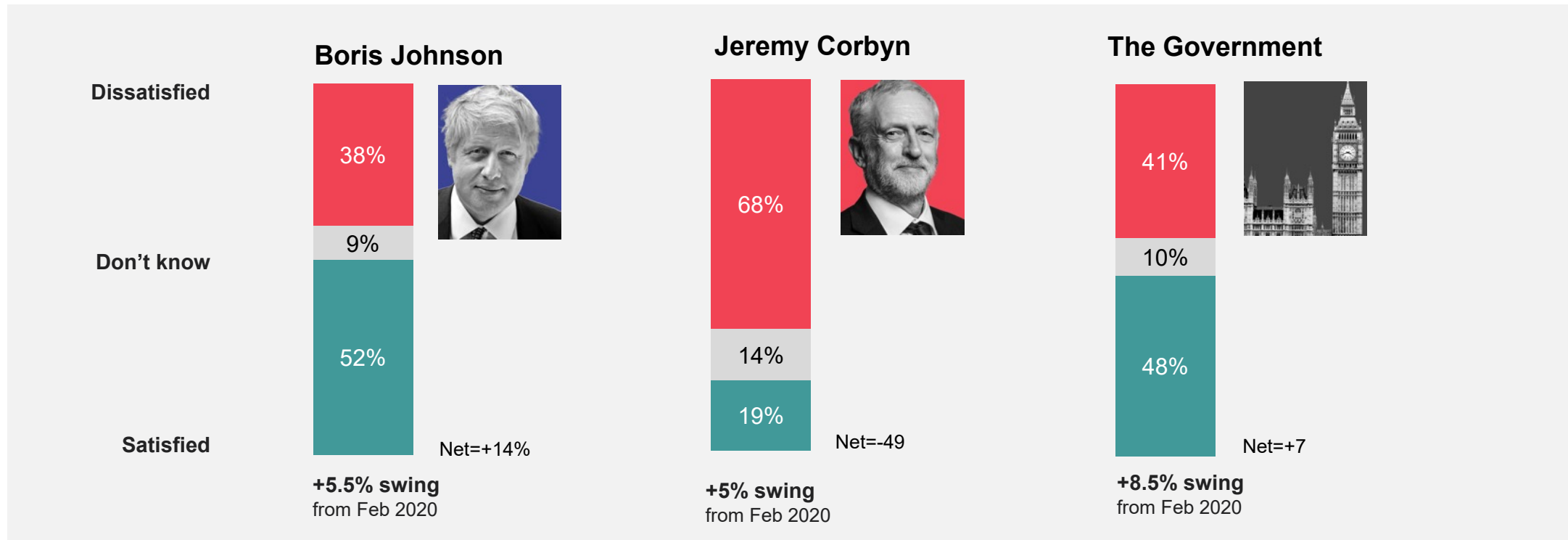
WITH GOVERNMENT
AND PARTY LEADERS

Ipsos MORI



Satisfaction with leaders and the Government: March 2020

Are you satisfied or dissatisfied with the way.... is running the country / doing his/her job.
as Prime Minister /Leader of the Labour Party?



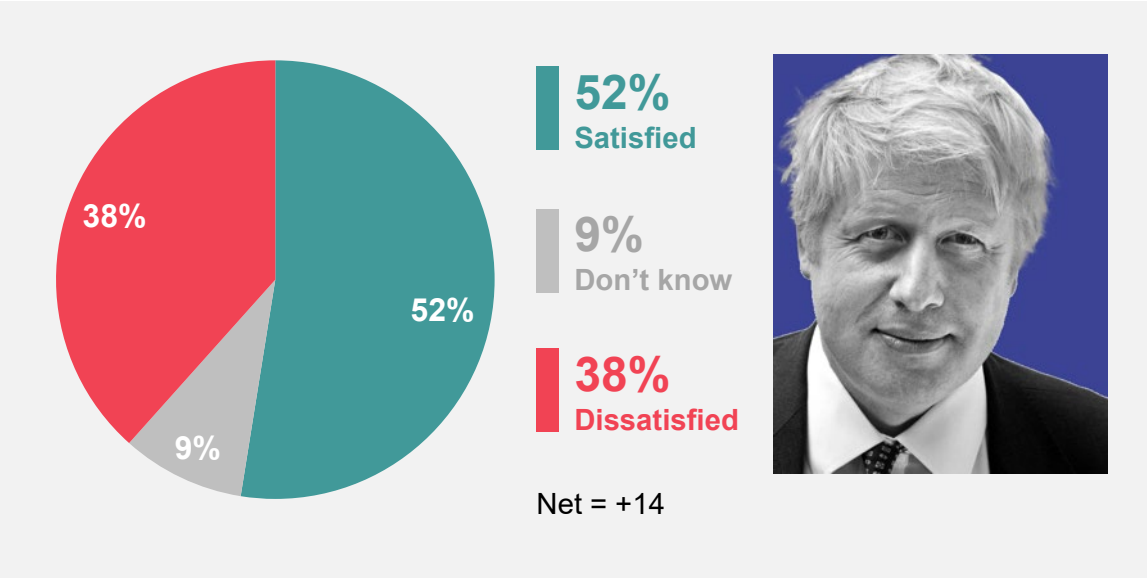
Base: 1,003 British adults 18+ 13 - 16 March 2020. Swing is calculated as the average of change in % "satisfied" and % "dissatisfied"

Source: Ipsos MORI Political Monitor

Boris Johnson: Satisfaction

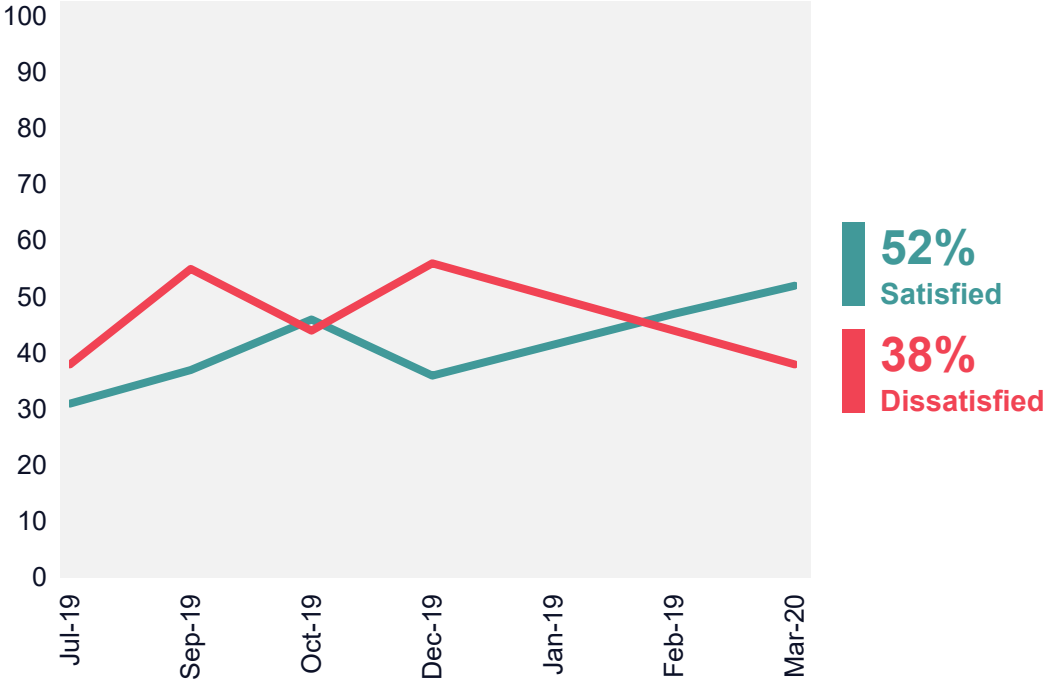
Are you satisfied or dissatisfied with the way Boris Johnson is doing his job as prime minister?

March 2020



Base: 1,003 British adults 18+, 13-16 March 2020

July 2019 – March 2020

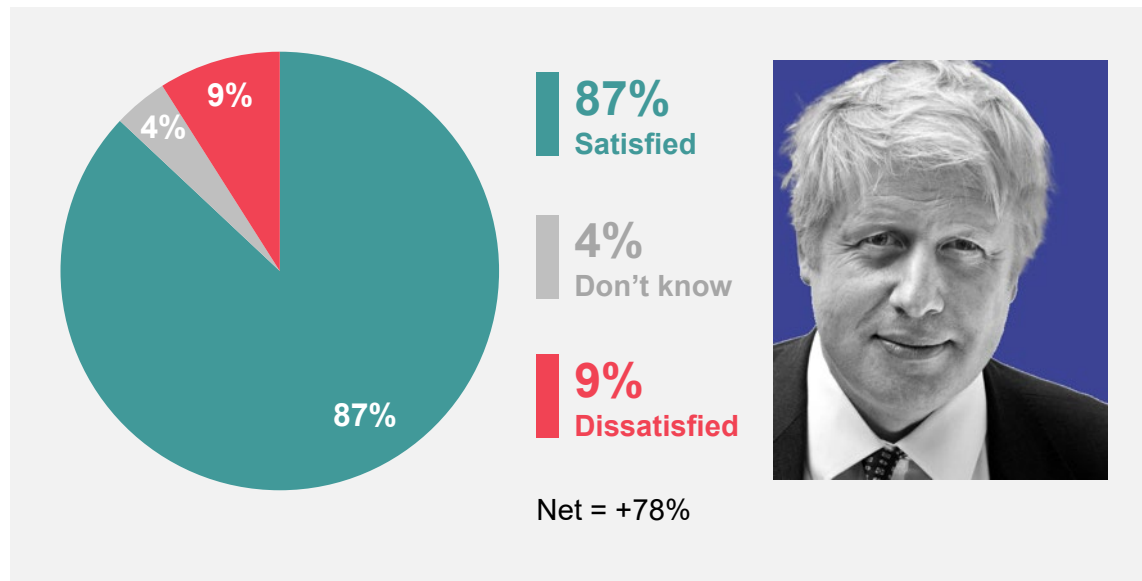


Source: Ipsos MORI Political Monitor

Boris Johnson: Satisfaction among Conservative supporters

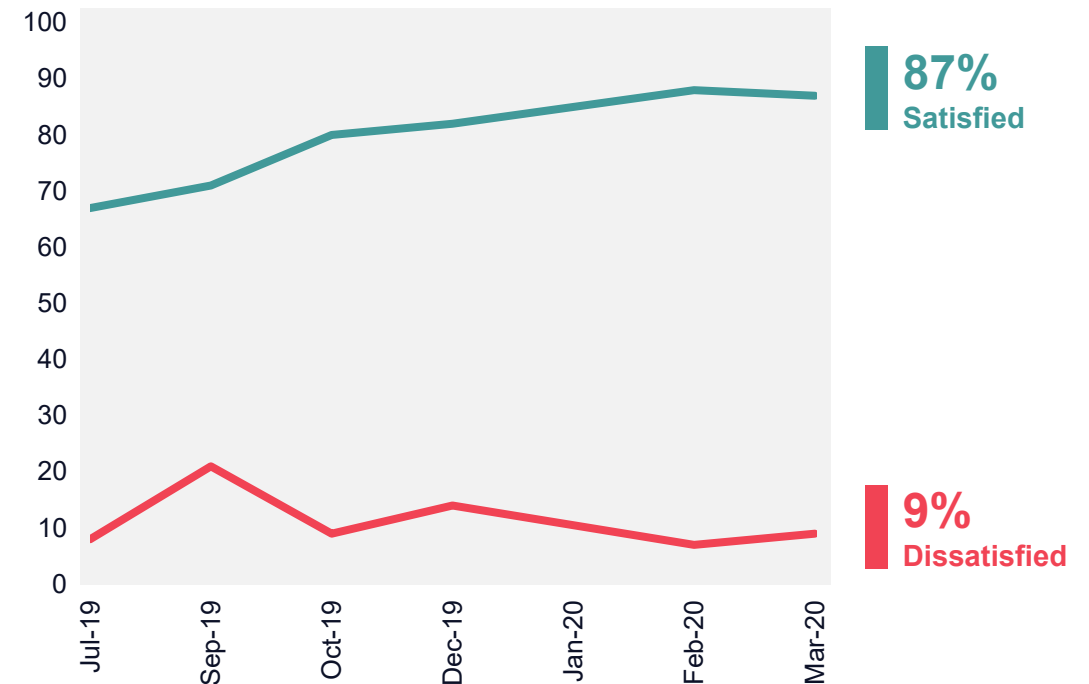
Are you satisfied or dissatisfied with the way Boris Johnson is doing his job as prime minister?

March 2020



Base: 411 Conservative party supporters 18+, 13 – 16 March 2020

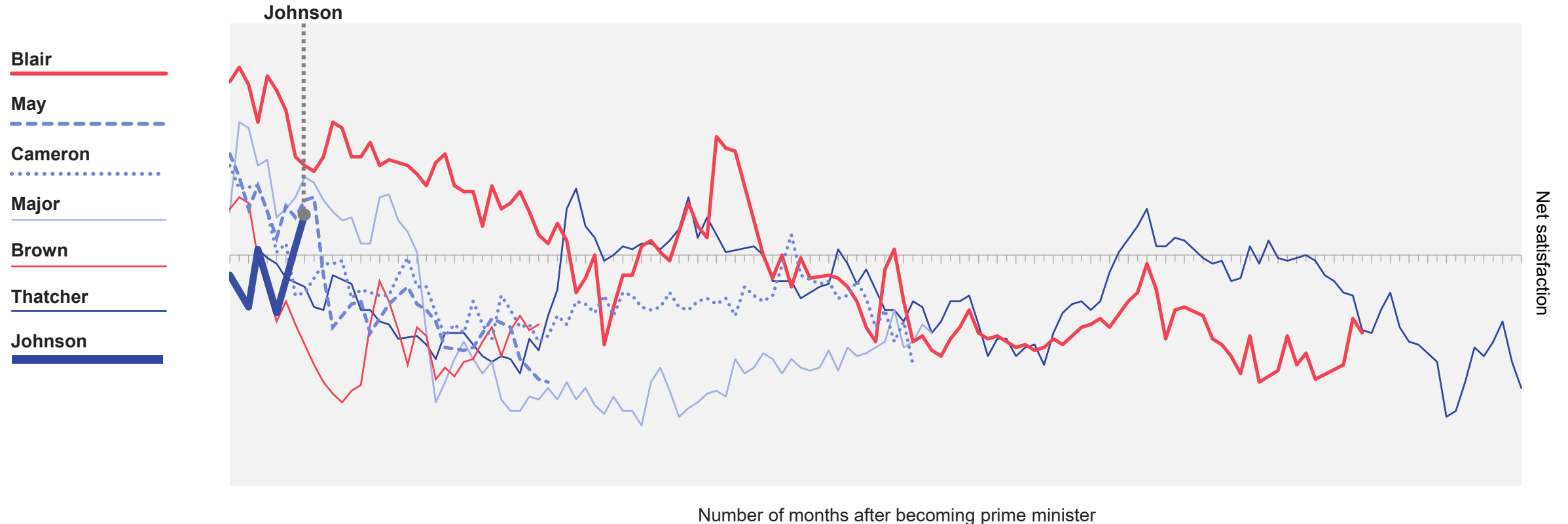
July 2019 – March 2020



Source: Ipsos MORI Political Monitor

Net satisfaction with Prime Ministers (1979-2020)

How satisfied or dissatisfied are you with the way ... is doing his/her job as prime minister?



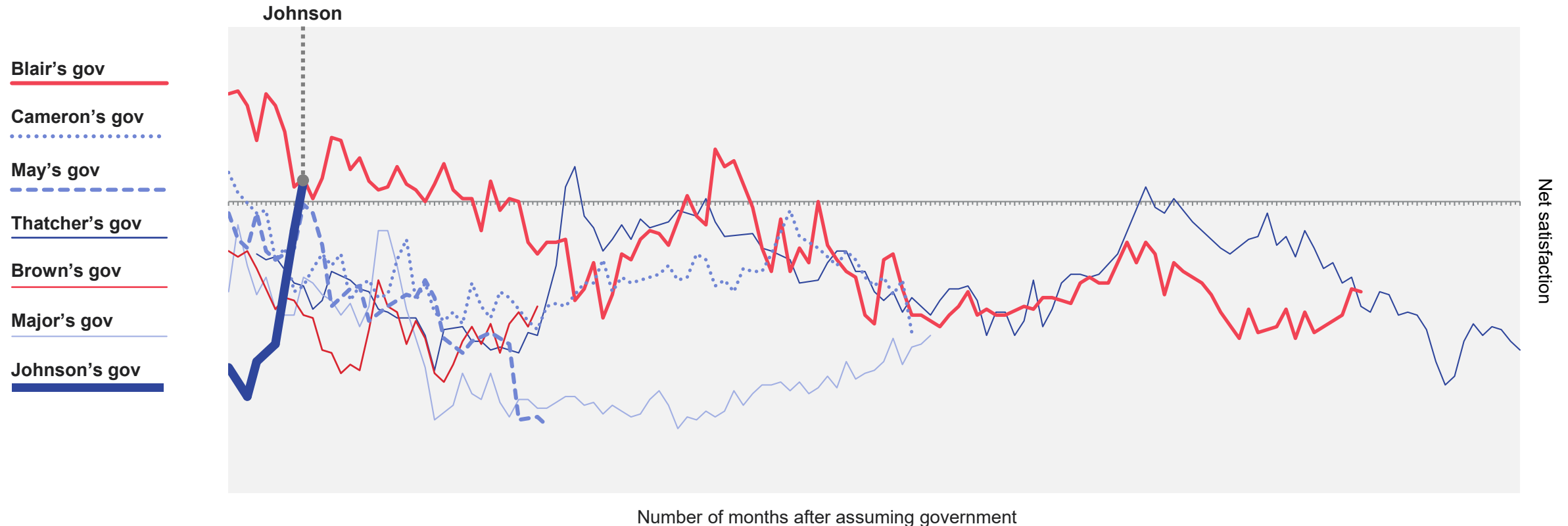
Note: Data collected prior to February 2008 was collected via face-to-face methodology; data collected from February 2008 was via telephone

Base: c.1,000 British adults each month

Source: Ipsos MORI Political Monitor

Net satisfaction with the Government (1979 – 2020)

How satisfied or dissatisfied are you with the way the government is running the country?



Note: Data collected prior to February 2008 was collected via face-to-face methodology; data collected from February 2008 was via telephone

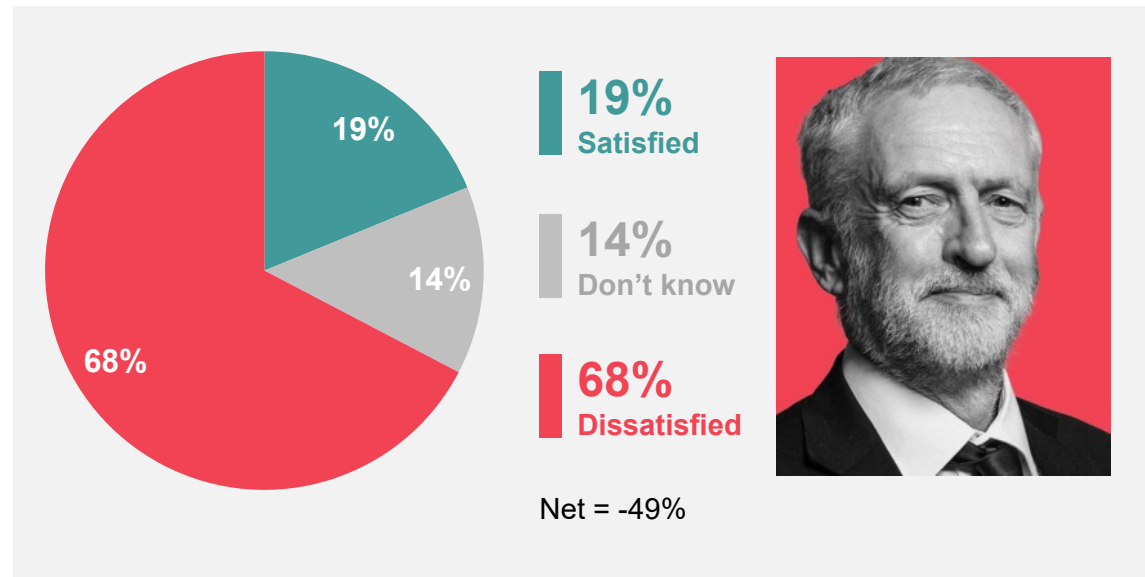
Base: c.1,000 British adults each month

Source: Ipsos MORI Political Monitor

Jeremy Corbyn: Satisfaction

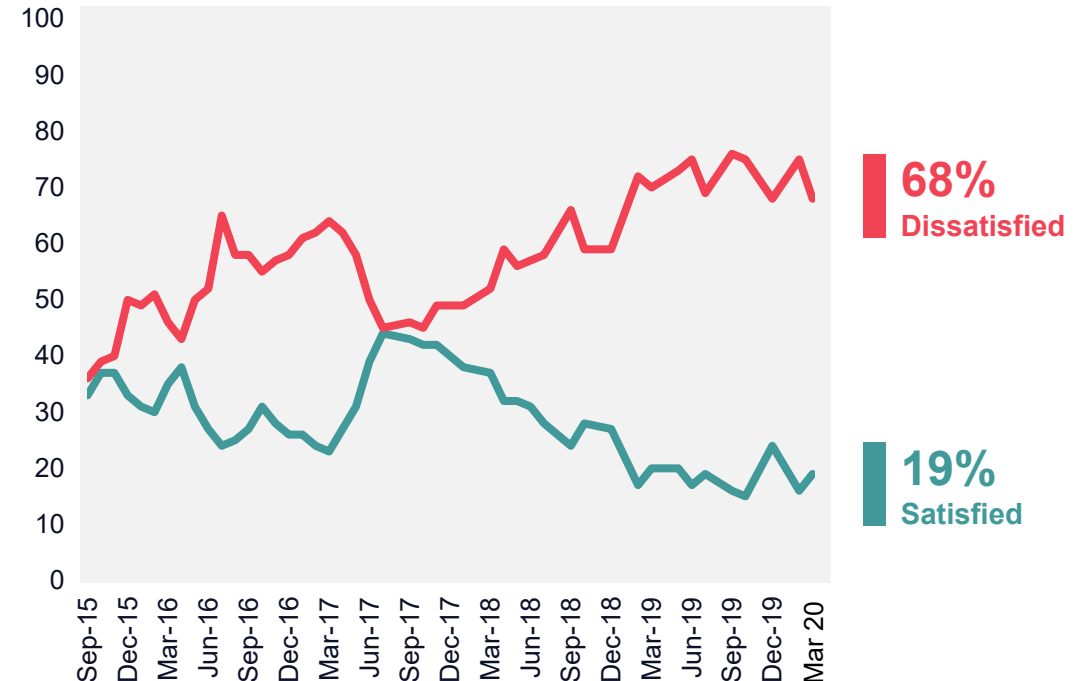
Are you satisfied or dissatisfied with the way Jeremy Corbyn is doing his job as leader of the Labour Party?

March 2020



Base: 1,003 British adults 18+, 13-16 March 2020

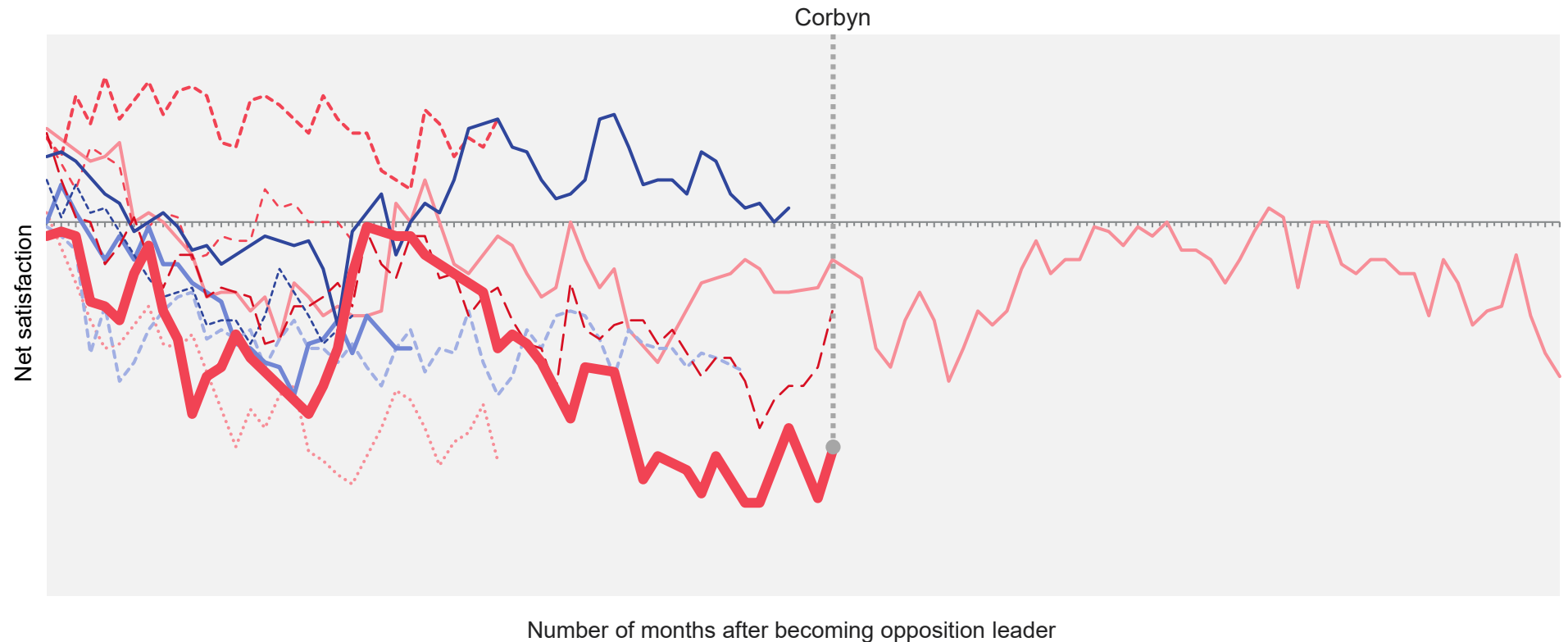
September 2015 – March 2020



Source: Ipsos MORI Political Monitor

Net satisfaction with Opposition Leaders (1980 – 2020)

How satisfied or dissatisfied are you with the way ... is doing his job as leader of the ... Party?



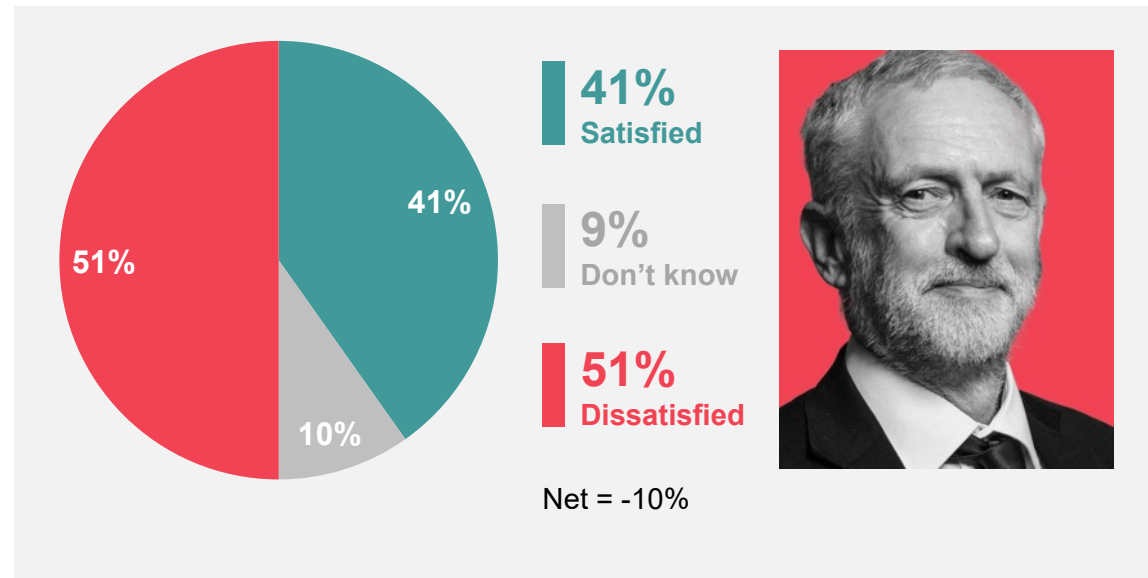
Note: Data collected prior to February 2008 was collected via face-to-face methodology; data collected from February 2008 was via telephone
Base: c.1,000 British adults each month

Source: Ipsos MORI Political Monitor

Jeremy Corbyn: Satisfaction amongst Labour supporters

Are you satisfied or dissatisfied with the way Jeremy Corbyn is doing his job as leader of the Labour party?

March 2020



Base: 284 Labour Party supporters aged 18+, 13-16 March 2020

September 2015 – March 2020



Source: Ipsos MORI Political Monitor

ECONOMIC OPTIMISM

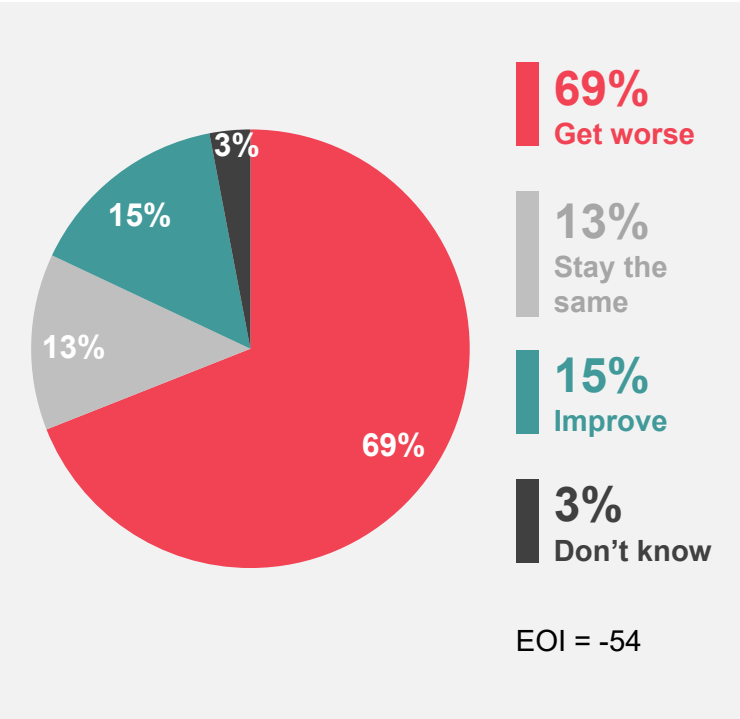
Ipsos MORI



Economic Optimism Index

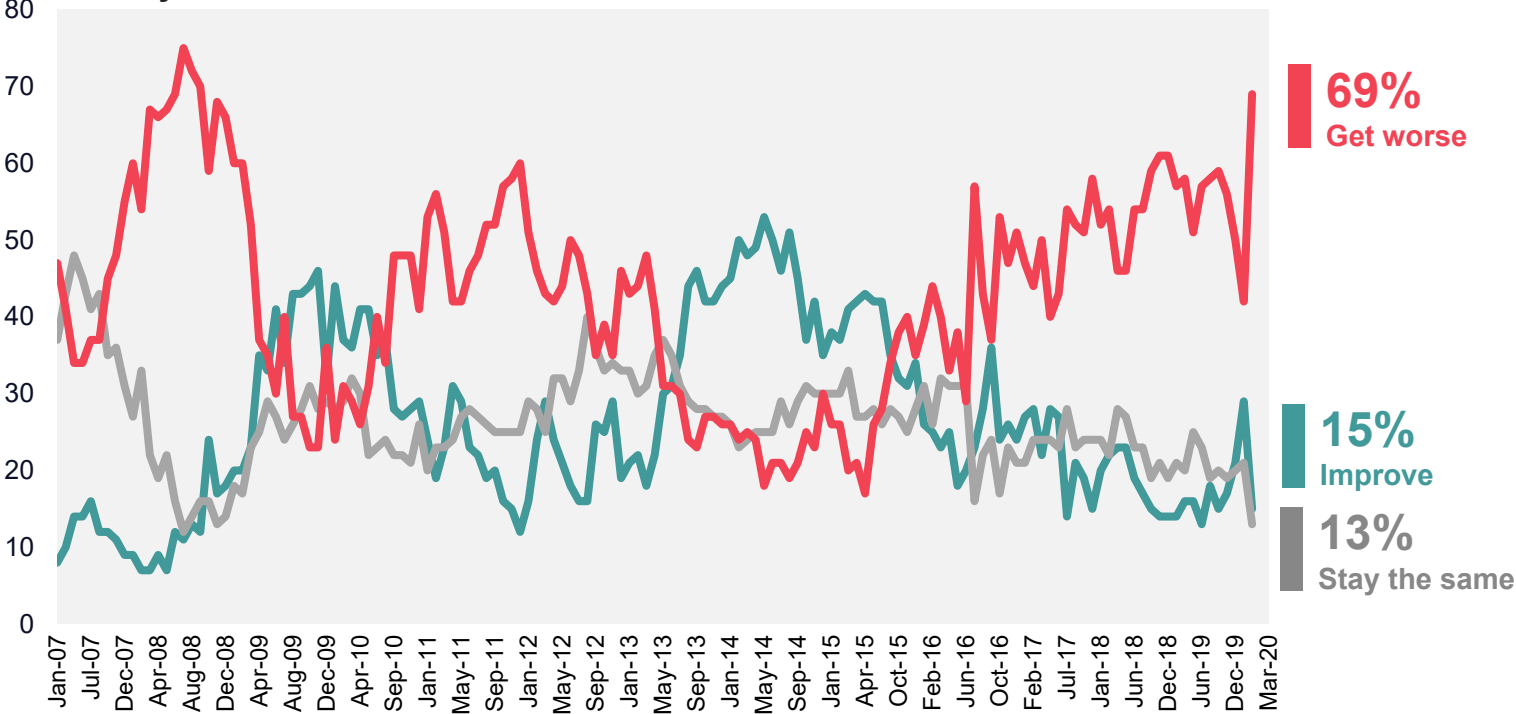
Do you think that the general economic condition of the country will improve, stay the same or get worse over the next 12 months?

March 2020



Base: 1,003 British adults 18+, 13 – 16 March 2020

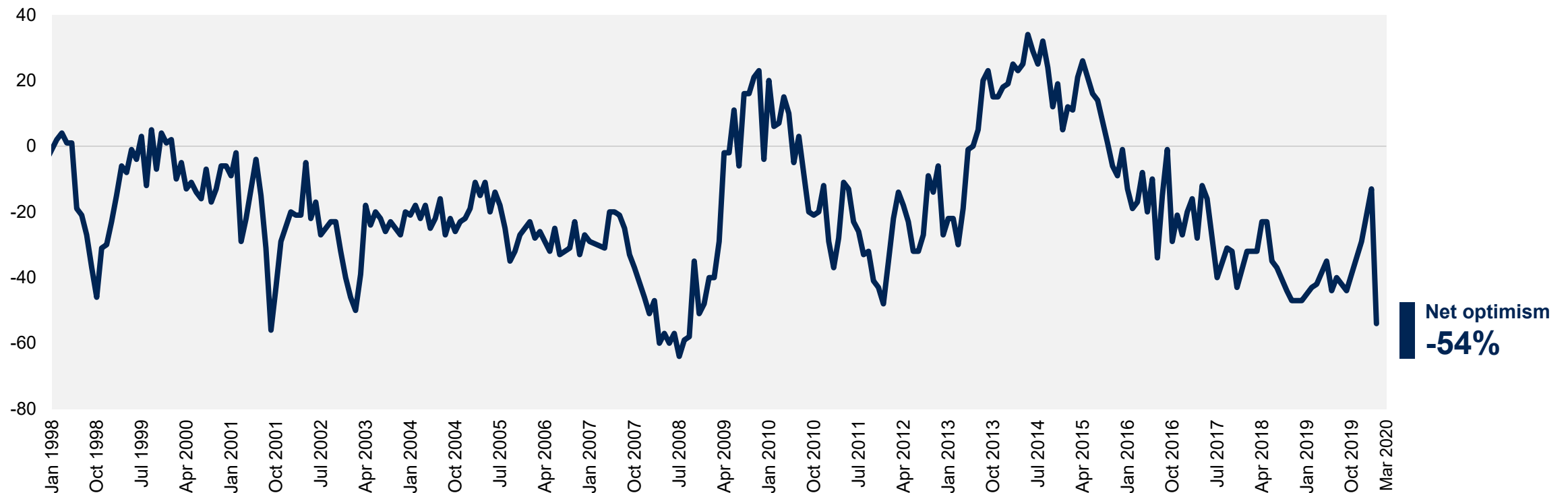
January 2007– March 2020



Source: Ipsos MORI Political Monitor

Economic Optimism Index (1998-2020)

Do you think that the general economic condition of the country will improve, stay the same or get worse over the next 12 months?



Base: c.1,000 British adults 18+ each month

Source: Ipsos MORI Political Monitor

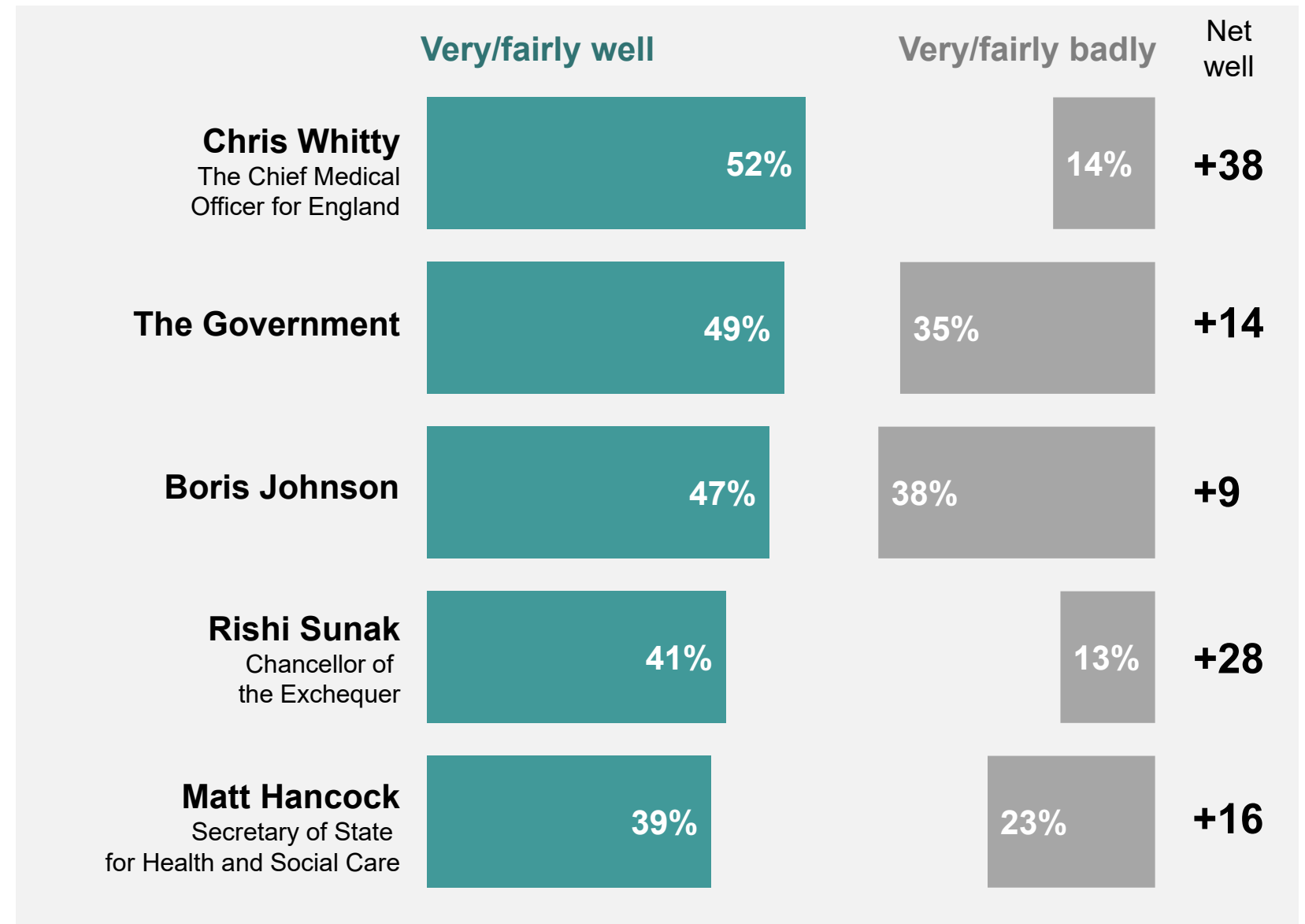
THE CORONAVIRUS

A detailed, high-magnification microscopic image of several coronavirus particles. The particles are spherical with a textured, bumpy surface and are covered in numerous long, thin, hair-like projections called spike proteins. The background is dark and out of focus, showing some faint, glowing blue and white spots, possibly representing other viral components or a laboratory setting.

Handling of the Coronavirus outbreak

Overall, how well or badly do you think each of the following have handled the coronavirus outbreak so far? If you do not know who the person is, please say so.

Fieldwork: 13-16 March

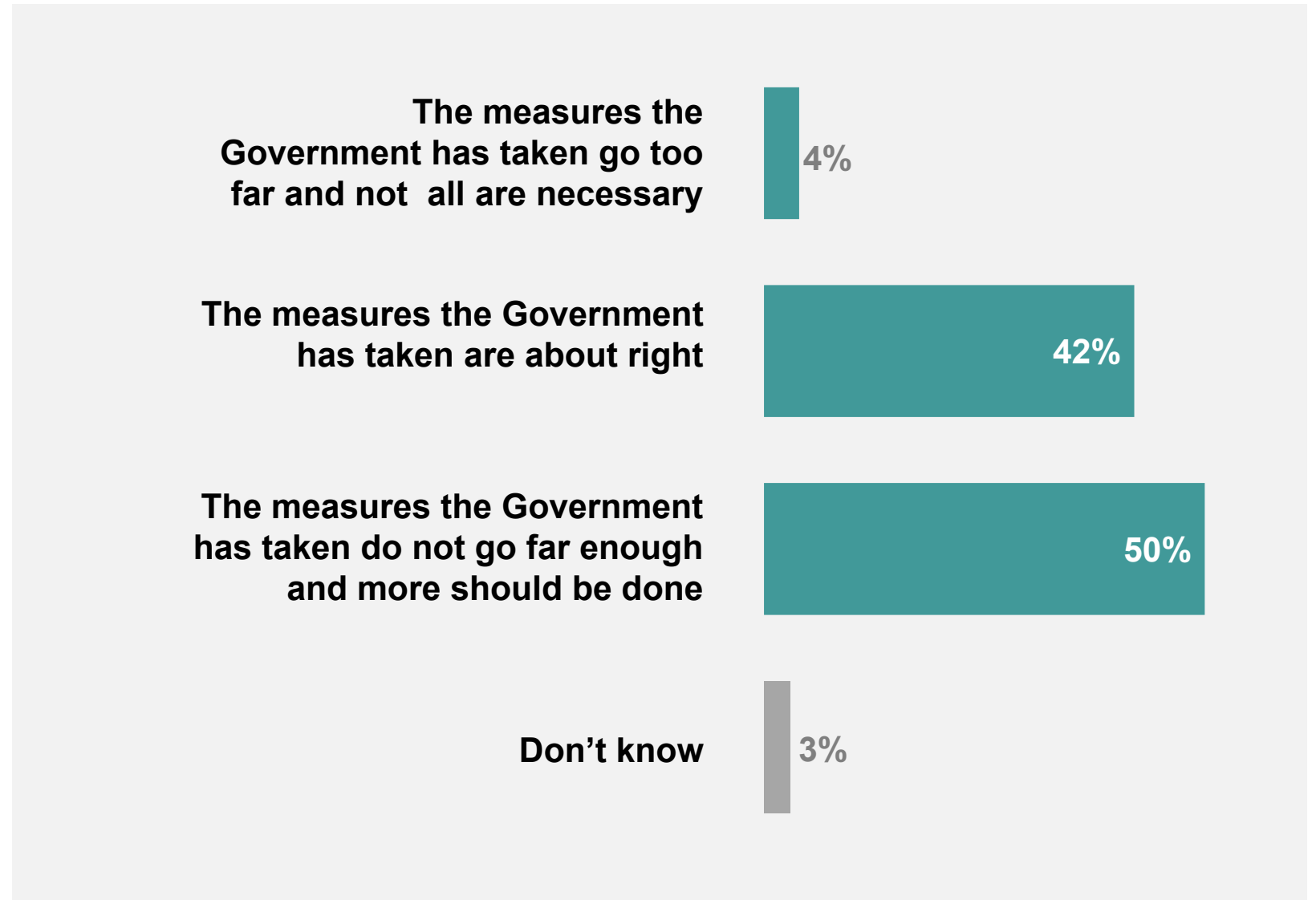


Base: 1,003 British adults 18+, 13-16 March 2020

Government measures in response to the Coronavirus

When thinking about the different measures the Government has taken so far in order to tackle the coronavirus outbreak, which of the following statements comes closest to your view?

Fieldwork: 13-16 March

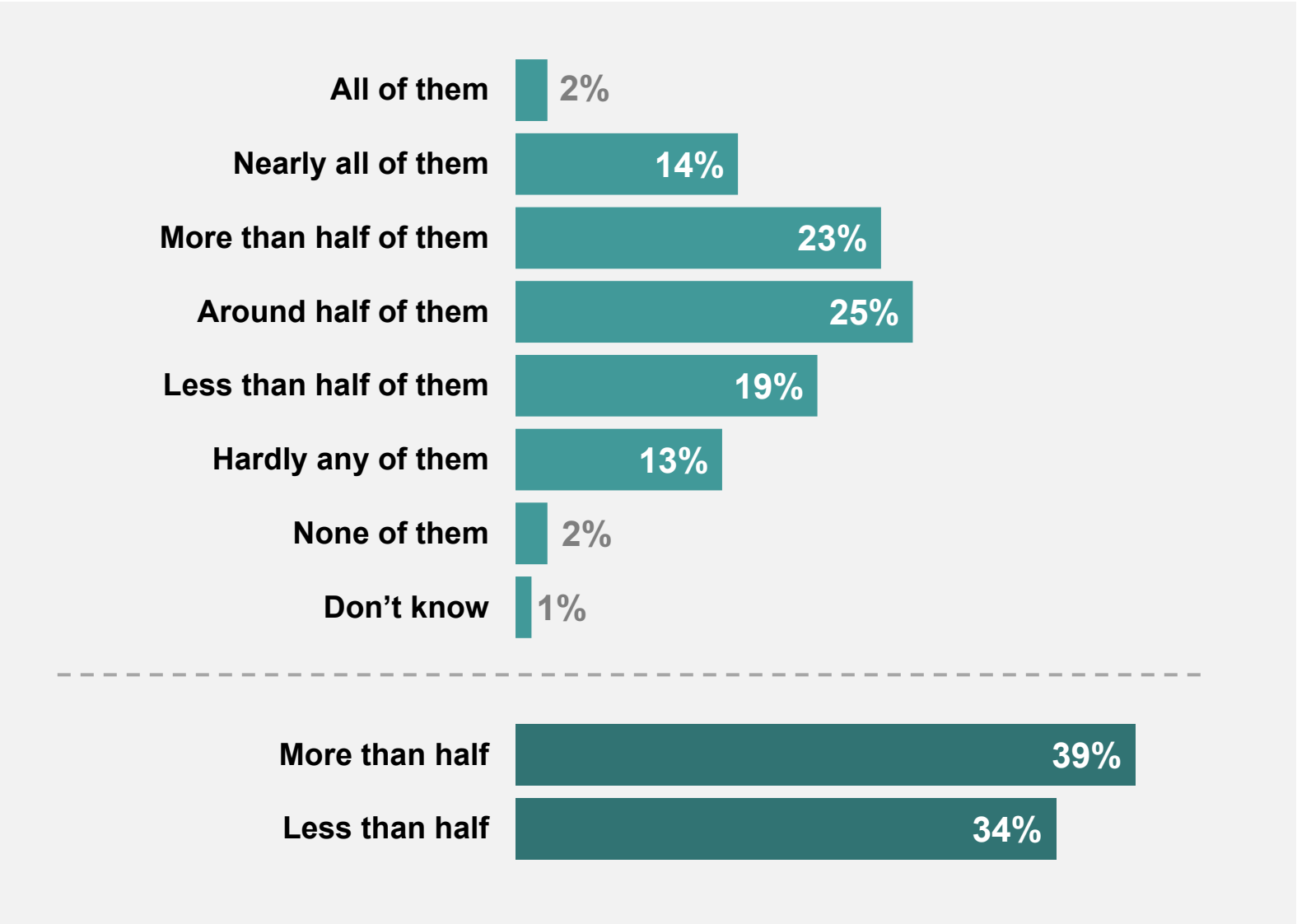


Base: 1,003 British adults 18+, 13-16 March 2020

Likelihood of self-isolating for a week

As you may know, the government has advised people with mild symptoms, such as having a high temperature or continuous cough, to self-isolate and stay at home for 7 days, regardless of whether they have been tested for the coronavirus. How many people, if any, with mild symptoms do you think will follow this advice and self-isolate themselves for seven days?

Fieldwork: 13-16 March

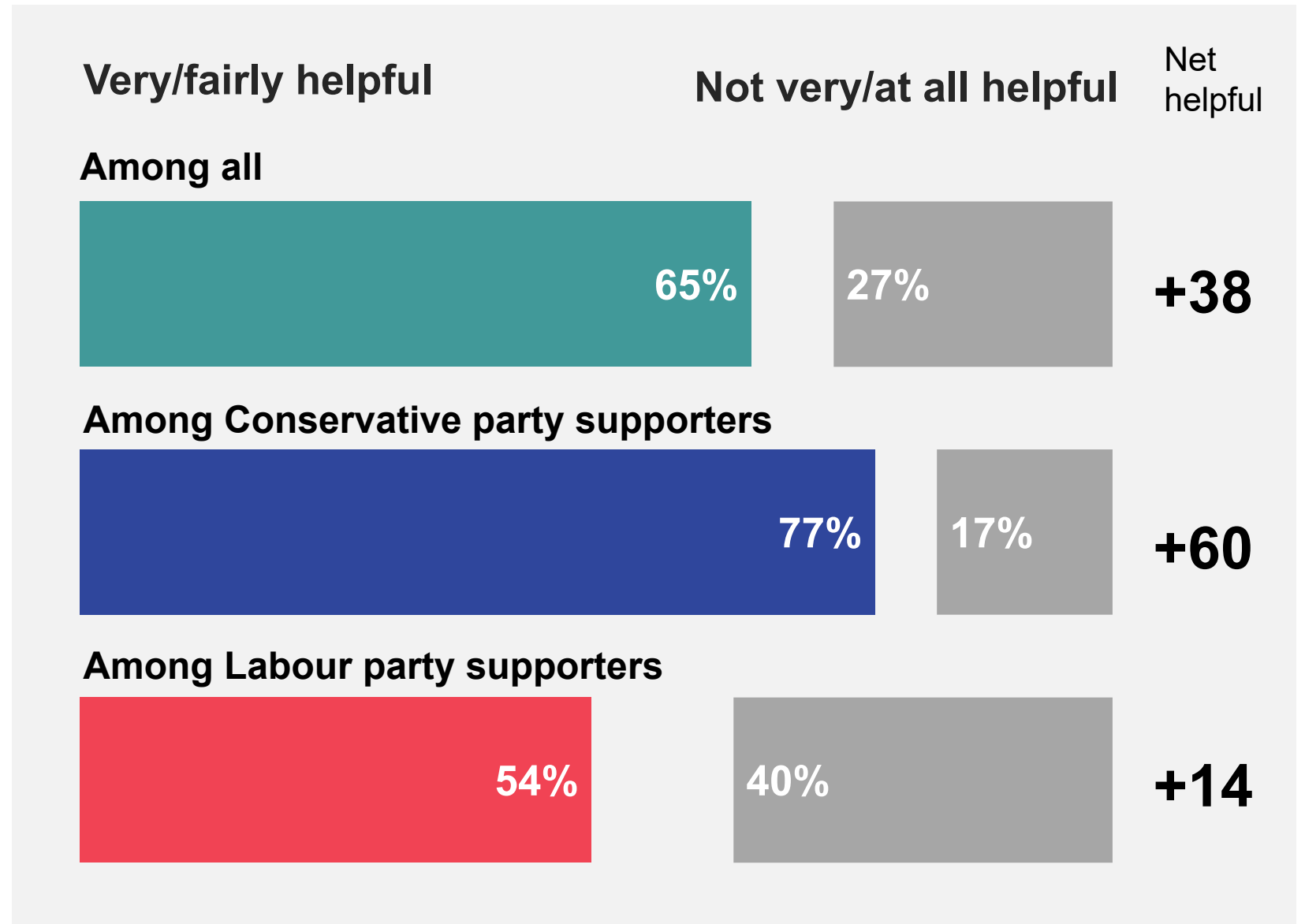


Base: 1,003 British adults 18+, 13-16 March 2020

Handling of the Coronavirus outbreak

As you may know, this week's /last week's Budget included measures to help deal with the coronavirus outbreak. From what you know or have heard, how helpful, if at all, do you think these measures will be overall in tackling the coronavirus outbreak?

Fieldwork: 13-16 March

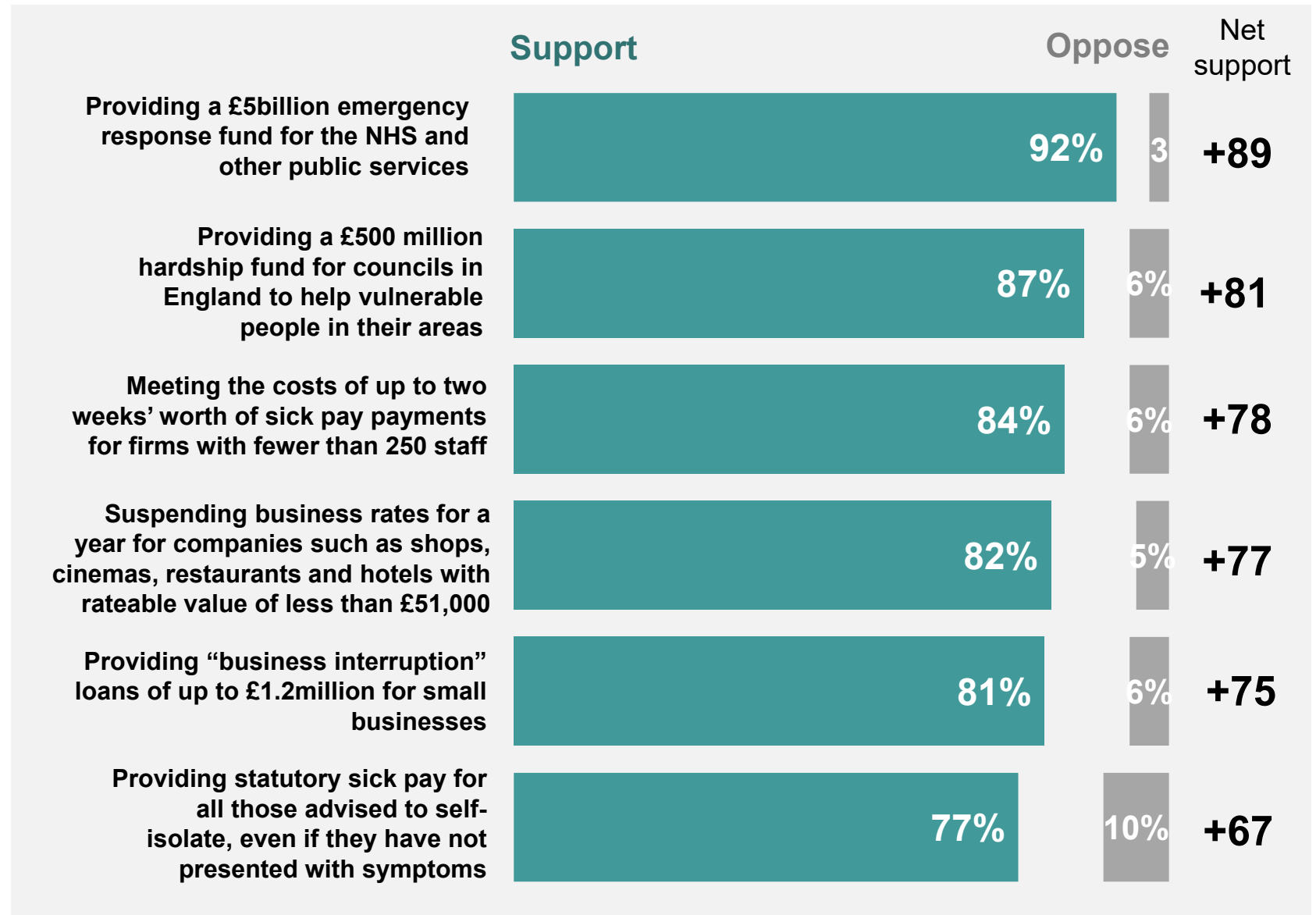


Base: 1,003 British adults 18+, Conservative party supporters (411), Labour party supporters (284), 13-16 March 2020

Support for Budget measures in response to the Coronavirus

And to what extent, if at all, do you support or oppose each of the following policies announced in the Budget to respond to the coronavirus outbreak?

Fieldwork: 13-16 March



Base: 1,003 British adults 18+, 13-16 March 2020

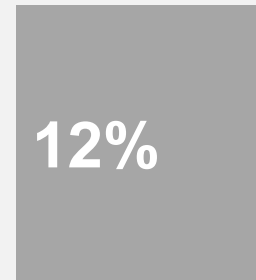
Response to the Coronavirus: Bank of England Interest Rate Cut

As you may know, the Bank of England recently announced it was cutting base interest rates from 0.75 to 0.25 per cent to help deal with the potential economic impact of the coronavirus outbreak. To what extent, if at all, do you support or oppose this interest rate cut? Fieldwork: 13-16 March

Support



Oppose



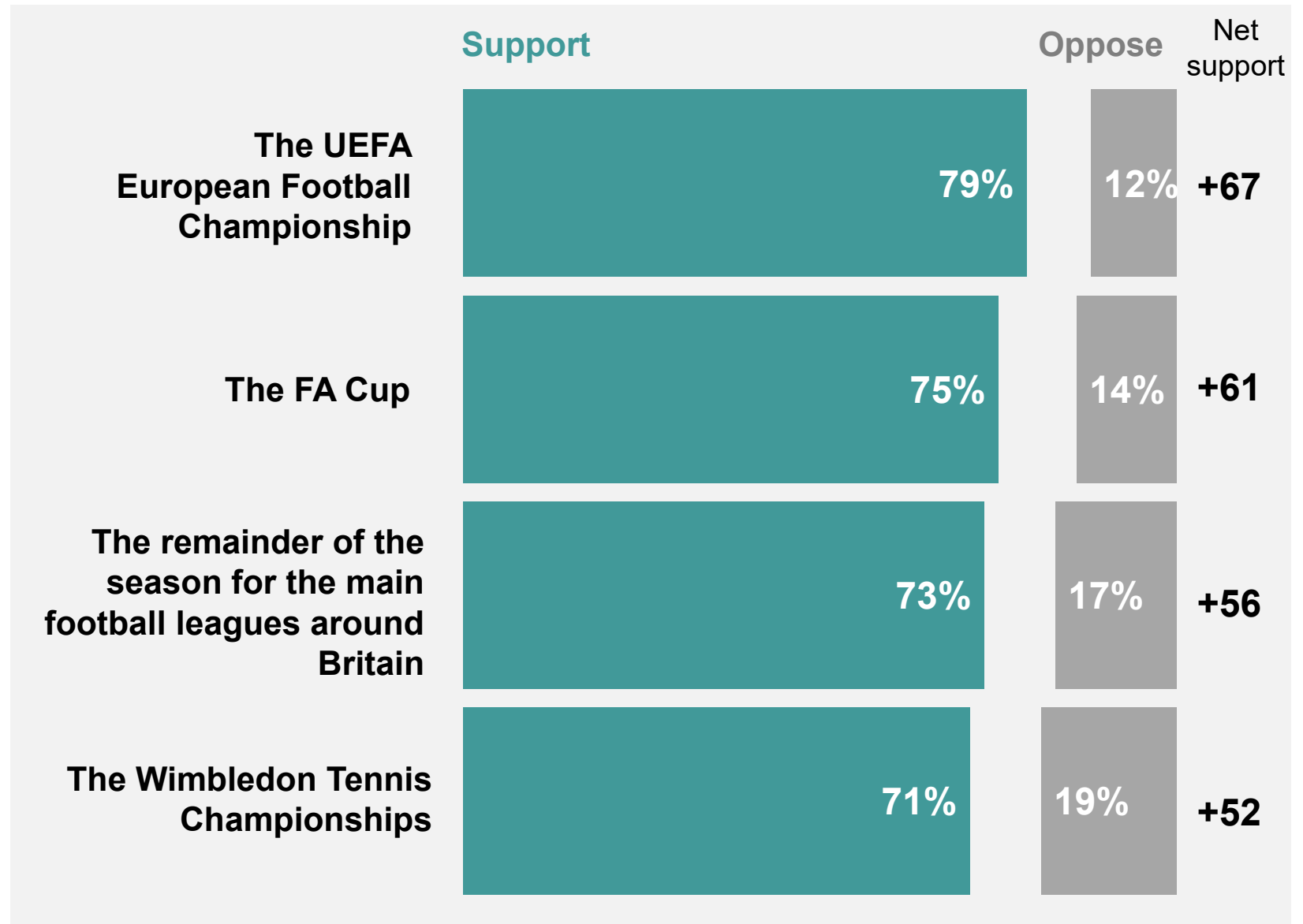
Net support: +58

Base: 1,003 British adults 18+, 13-16 March 2020

Source: Ipsos MORI Political Monitor

Cancellation of events due to coronavirus

And would you support or oppose cancelling each of the following events in light of the coronavirus outbreak? Fieldwork: 13-16 March

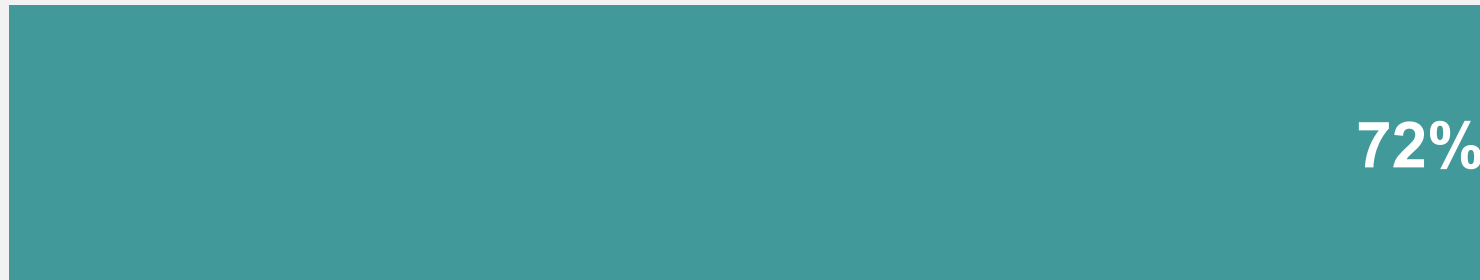


Base: 1,003 British adults 18+, 13-16 March 2020

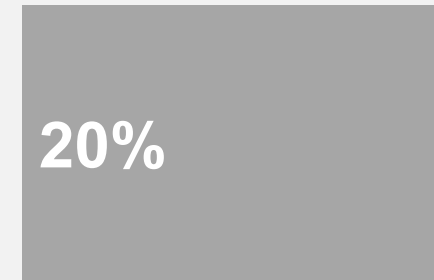
Response to the Coronavirus: Local and Mayoral Elections postponement

As you may know England was scheduled to hold local and mayoral elections on the 7th of May this year, but the government has announced these will now be postponed for a year due to the coronavirus. Do you support or oppose postponing these elections? Fieldwork: 13-16 March

Support



Oppose



Net support: +52

Base: 1,003 British adults 18+, 13-16 March 2020

Source: Ipsos MORI Political Monitor

THE BUDGET



Ipsos MORI

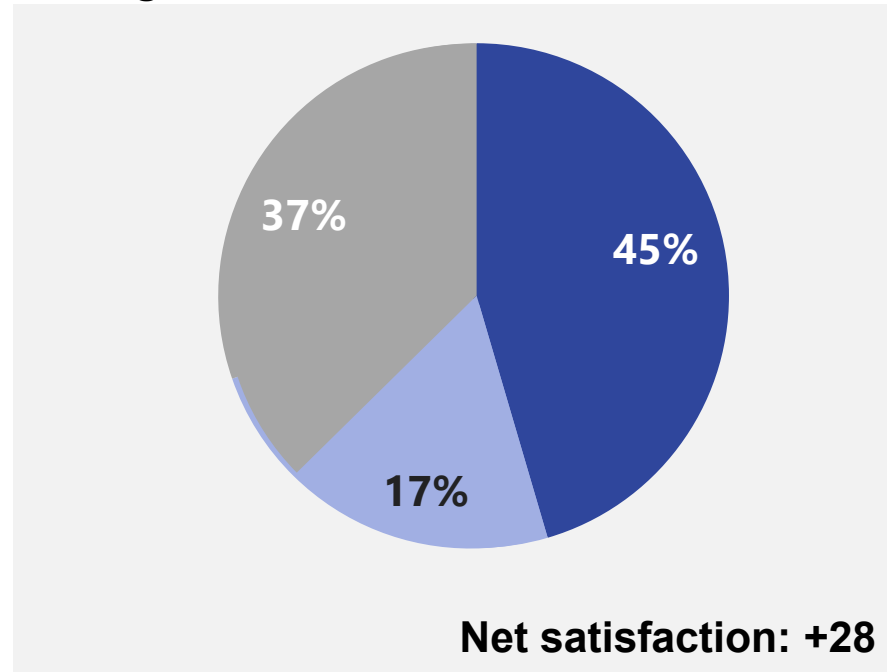


Rishi Sunak: Satisfaction

Can you tell me whether you are satisfied or dissatisfied with the way Rishi Sunak is doing his job as Chancellor of the Exchequer?

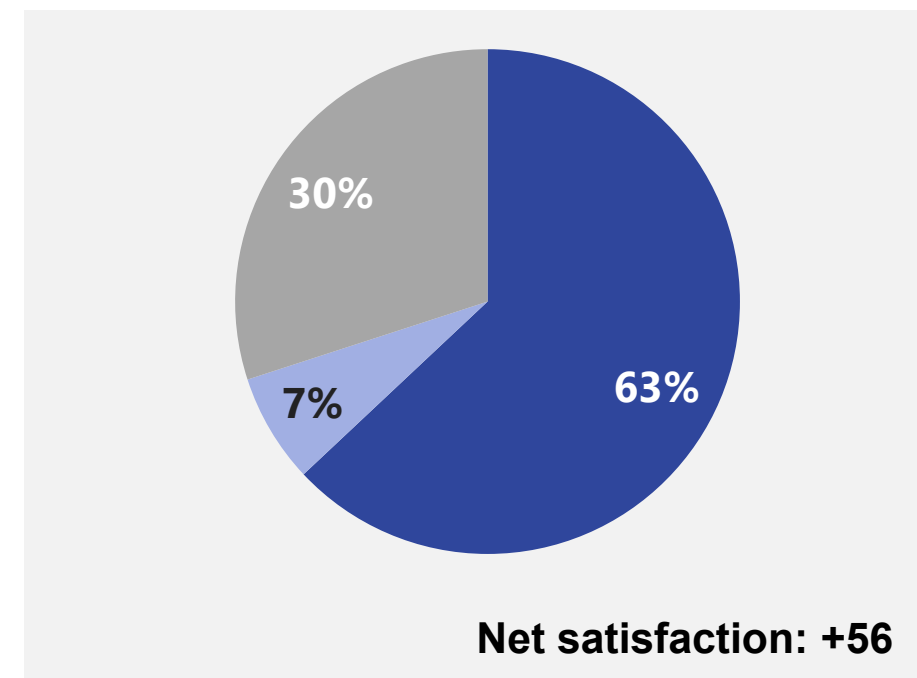


Among all



Base: 1,003 British adults 18+, 13-16 March 2020

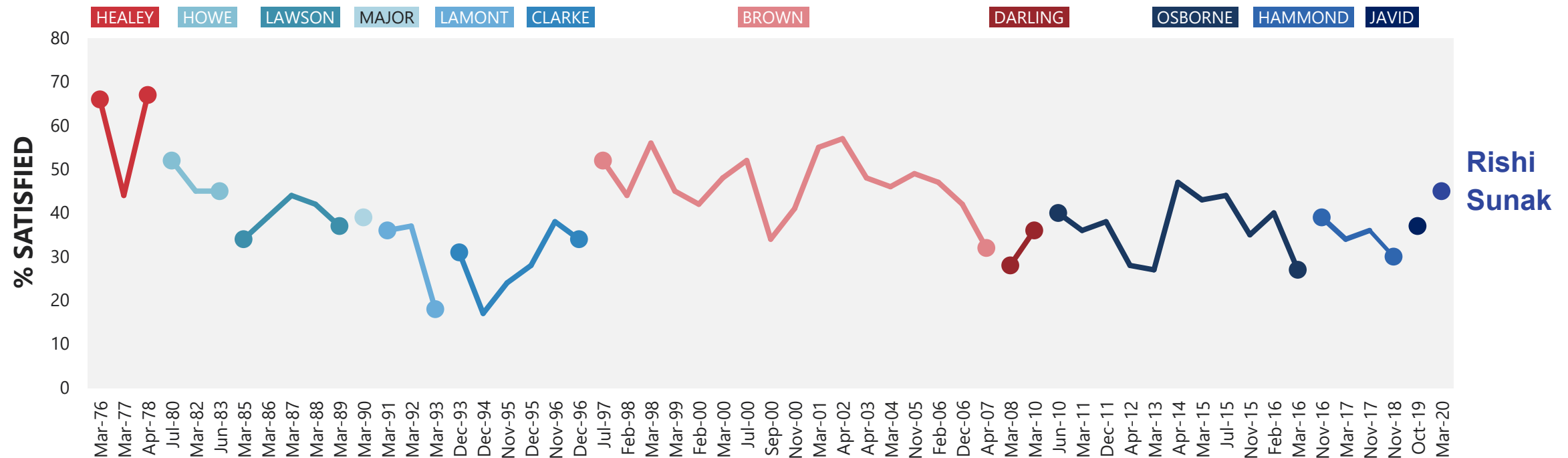
Among Conservative party supporters



Source: Ipsos MORI Political Monitor

Satisfaction with the Chancellor of the Exchequer: 1976-2020

Can you tell me whether you are satisfied or dissatisfied with the way ... is doing his job as Chancellor of the Exchequer?



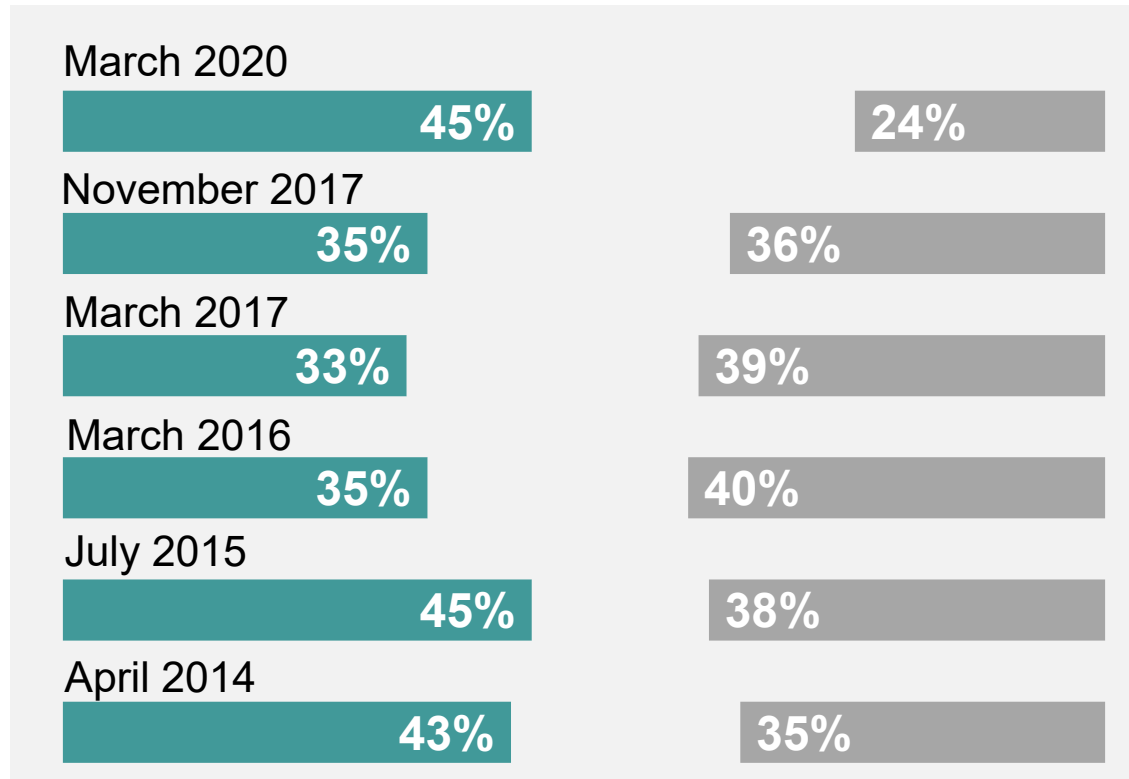
Base: c.1,000 British adults 18+ each month

Source: Ipsos MORI Political Monitor

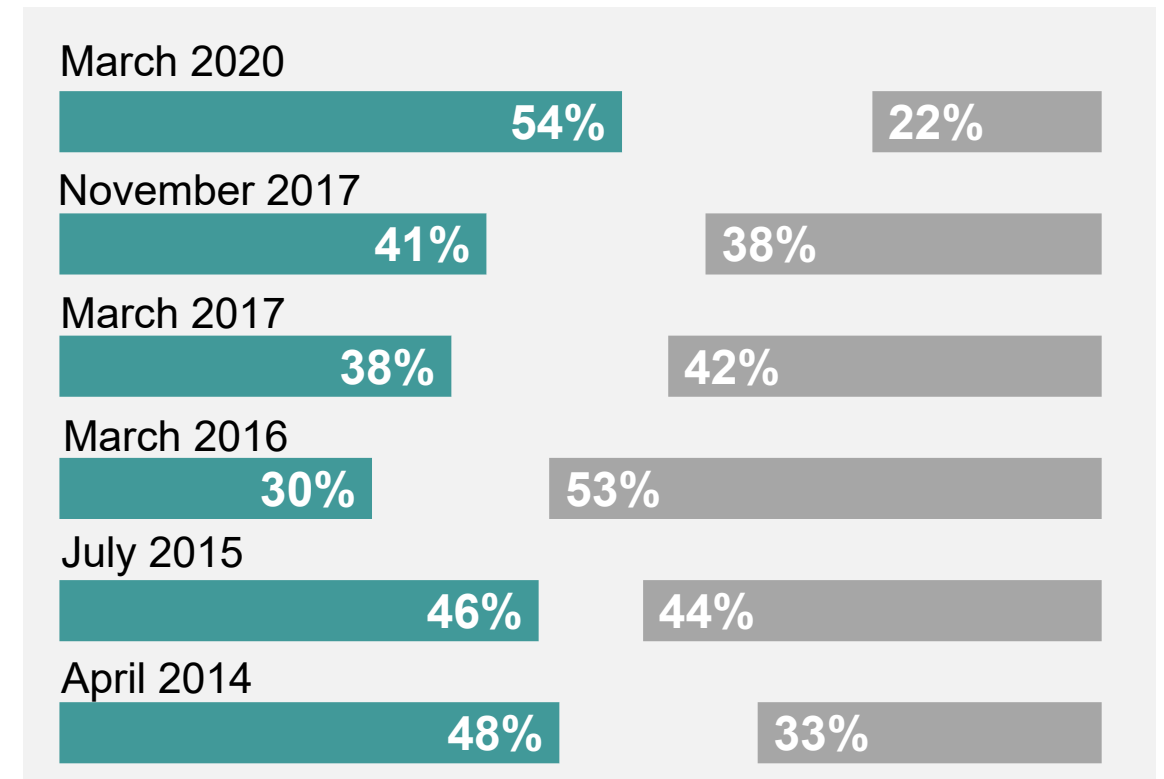
Opinion on the Budget proposals: 2014-2020

As you may know, the Government announced its 2020 budget this week/ last week. From what you know or have heard, do you think the Budget proposals are a good thing or a bad thing....?

You personally



For the country



Base: 1,003 British adults 18+, 13-16 March 2020

Ipsos MORI

March 2020 Political Monitor

For more information

Gideon Skinner
Research Director
gideon.skinner@ipsos.com

Cameron Garrett
Senior Research Executive
cameron.garrett@ipsos.com

Glenn Gottfried
Research Manager
glenn.gottfried@ipsos.com

Dylan Spielman
Research Executive
dylan.spielman@ipsos.com