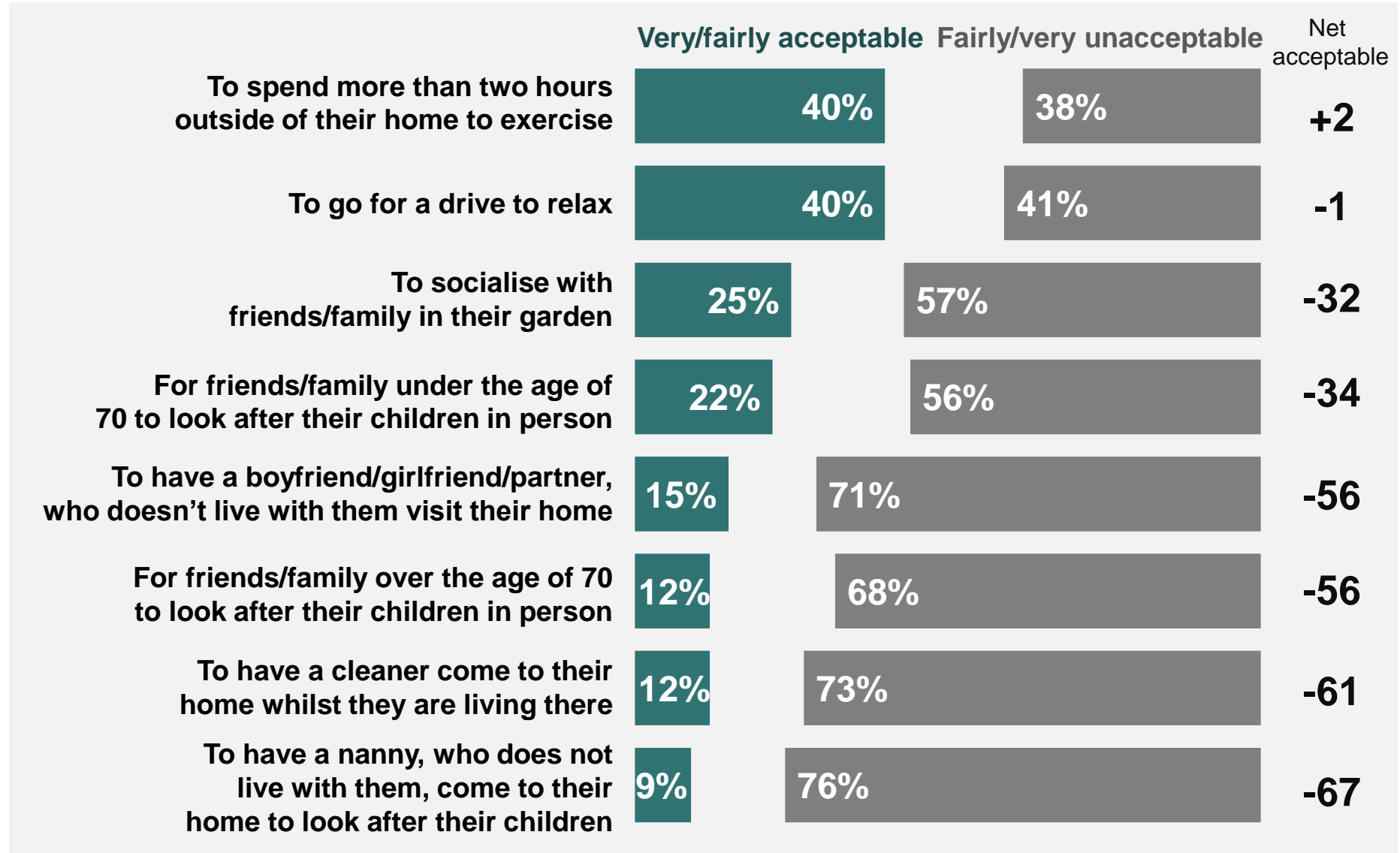


What is acceptable during lockdown?

8-11 May 2020

What is acceptable during lockdown?

Do you think it is acceptable or unacceptable for someone to do each of the following during the Coronavirus lockdown period?



Base: 1069 Online British adults 18-75, 8-11 May 2020

Source: Ipsos MORI

Ipsos MORI

Coronavirus Polling May 2020

For more information

Gideon Skinner
Research Director
gideon.skinner@ipsos.com

Keiran Pedley
Research Director
gideon.skinner@ipsos.com

Glenn Gottfried
Research Manager
glenn.gottfried@ipsos.com

Cameron Garrett
Senior Research Executive
cameron.garrett@ipsos.com

Holly Day
Research Executive
holly.day@ipsos.com