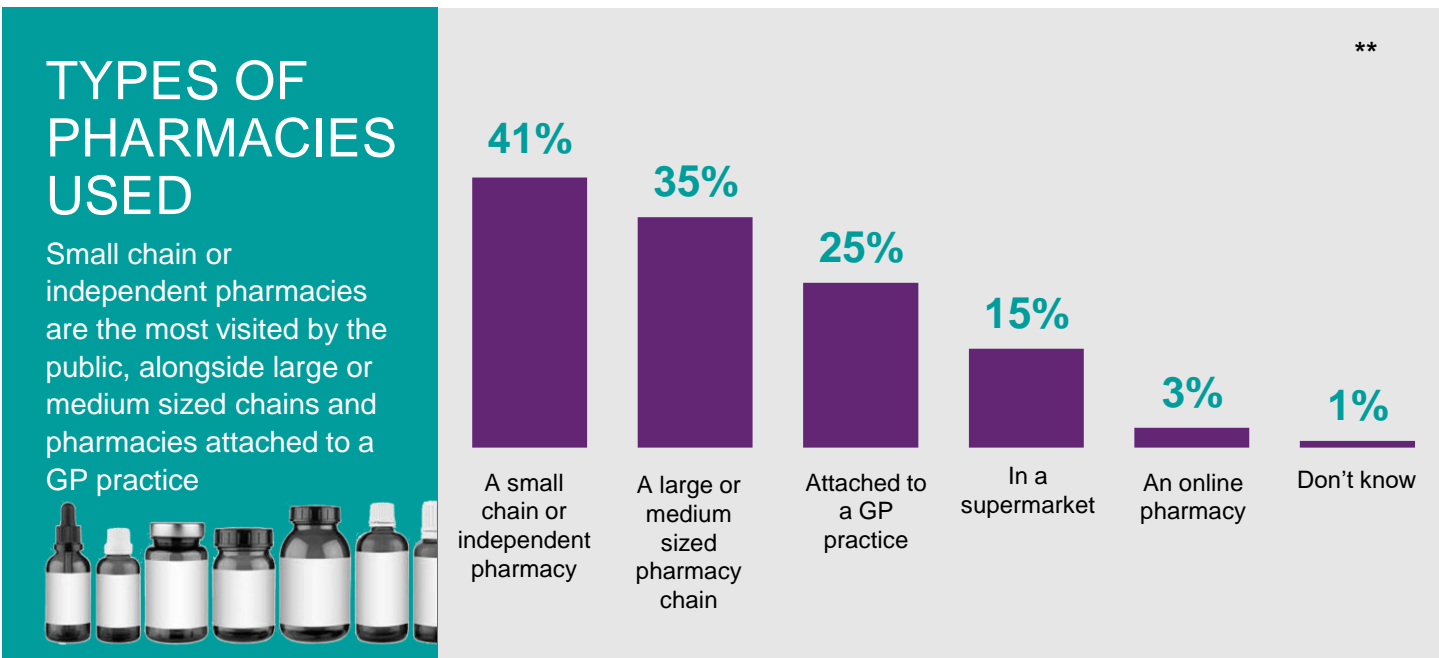
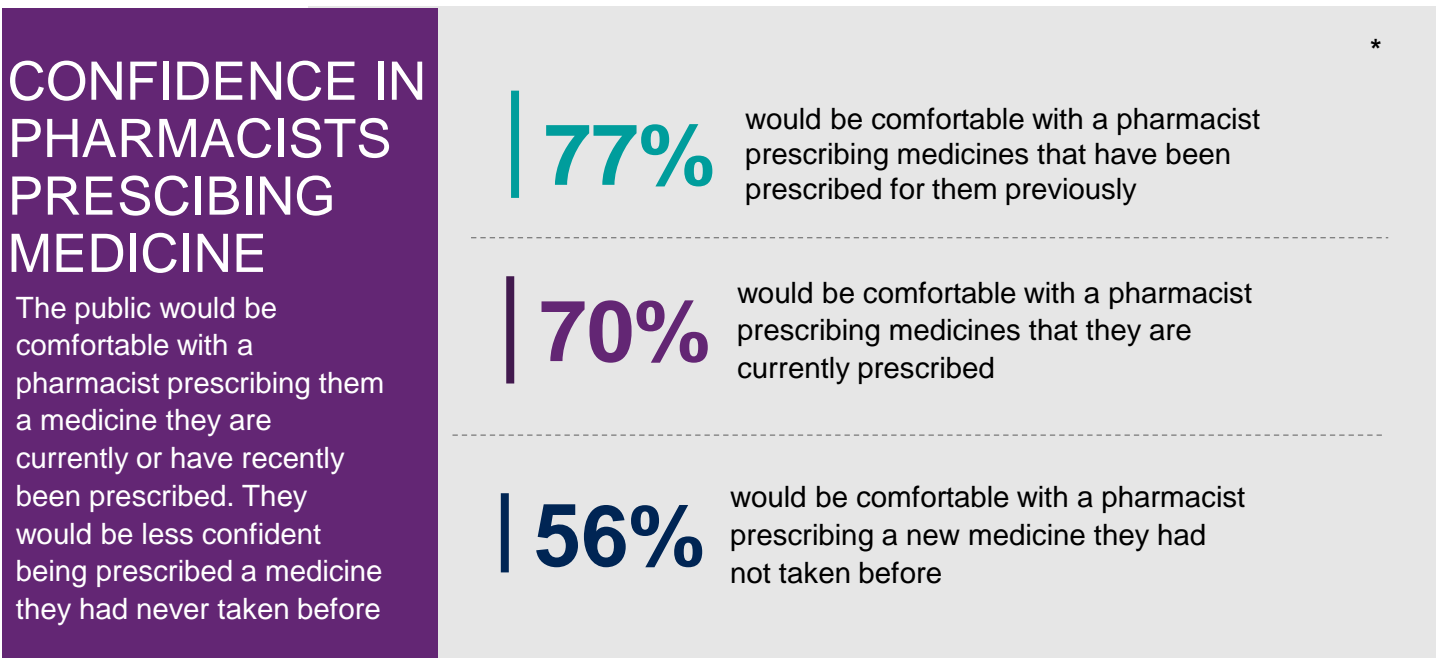
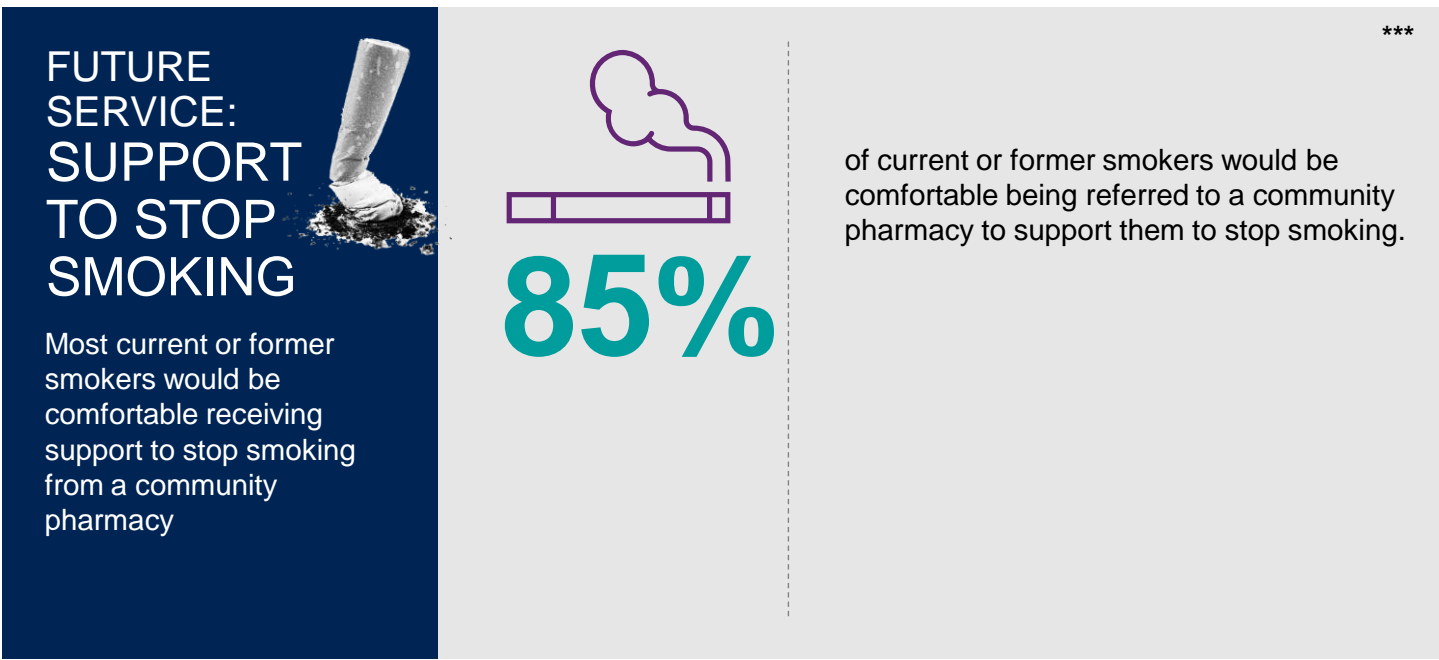
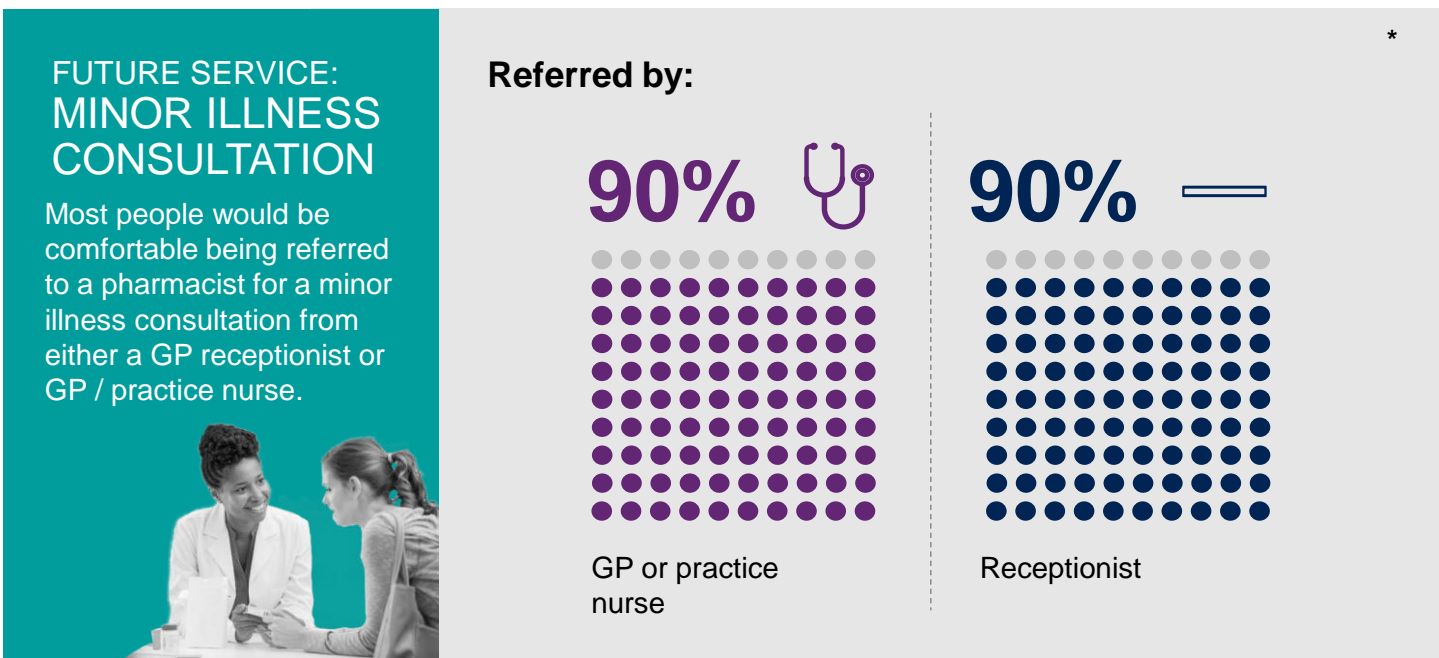
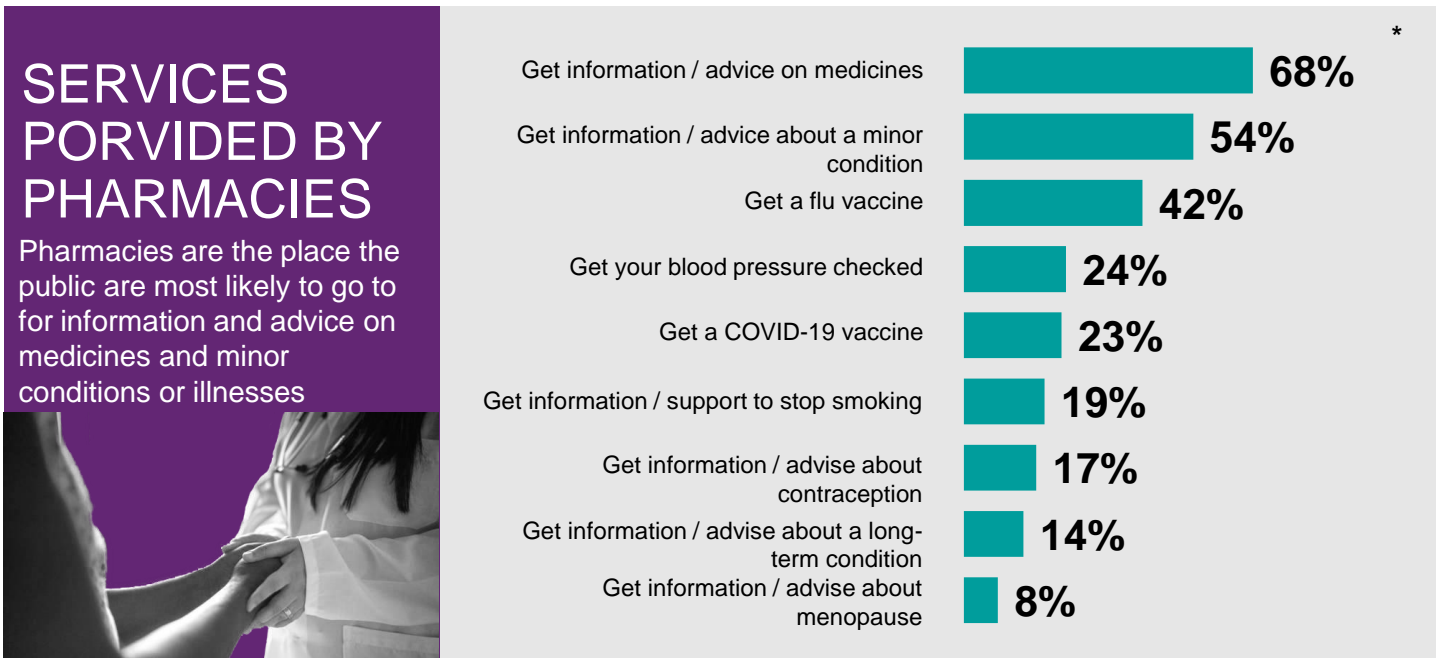
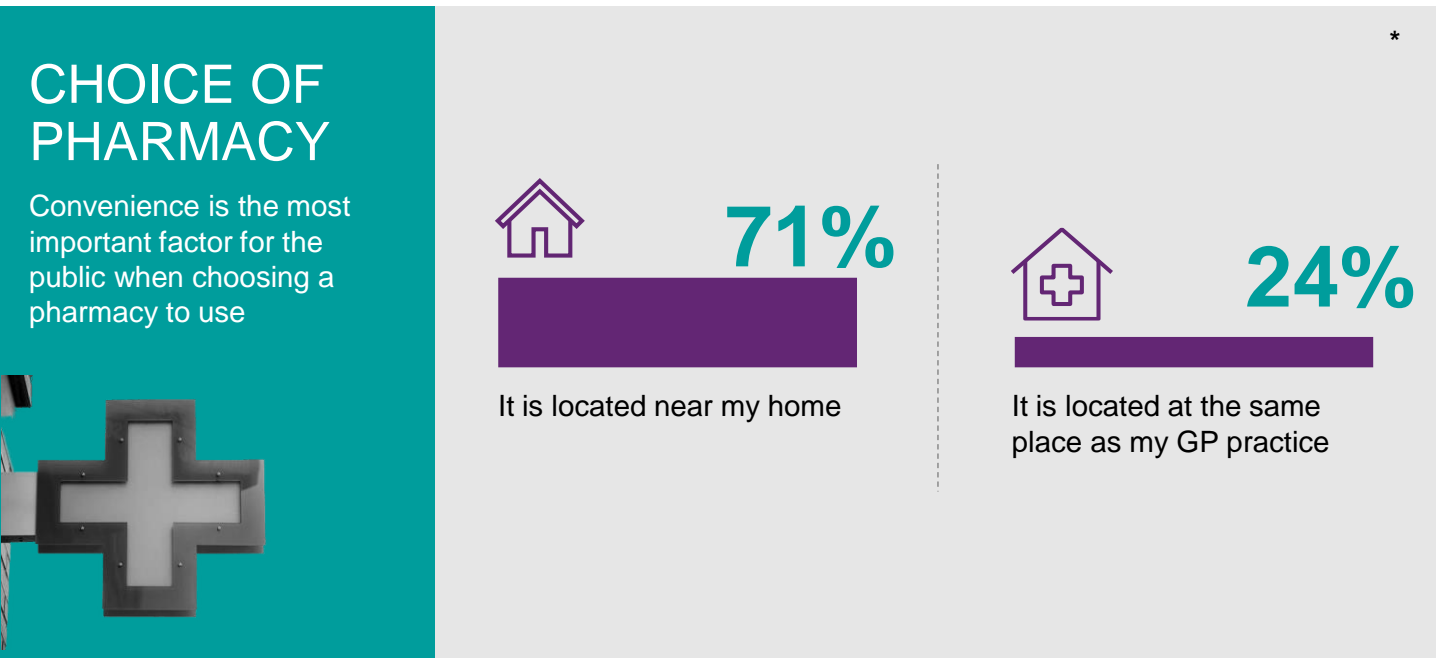
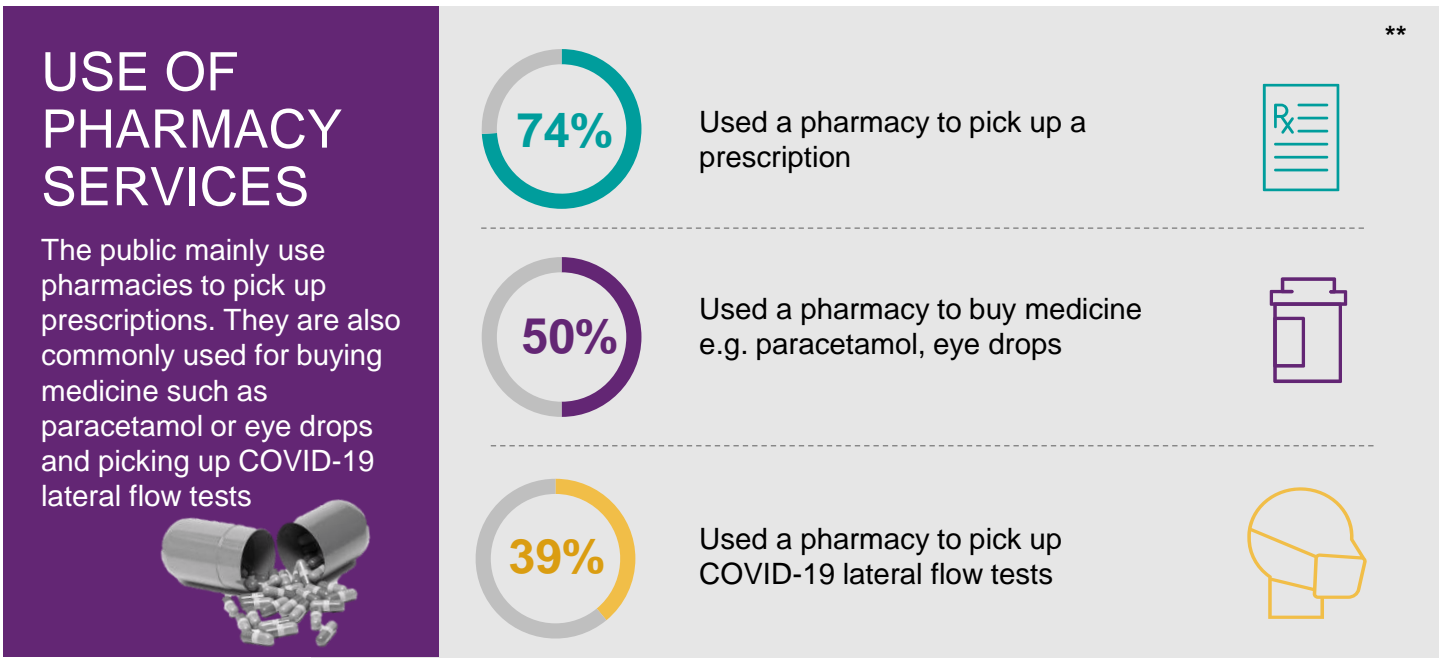
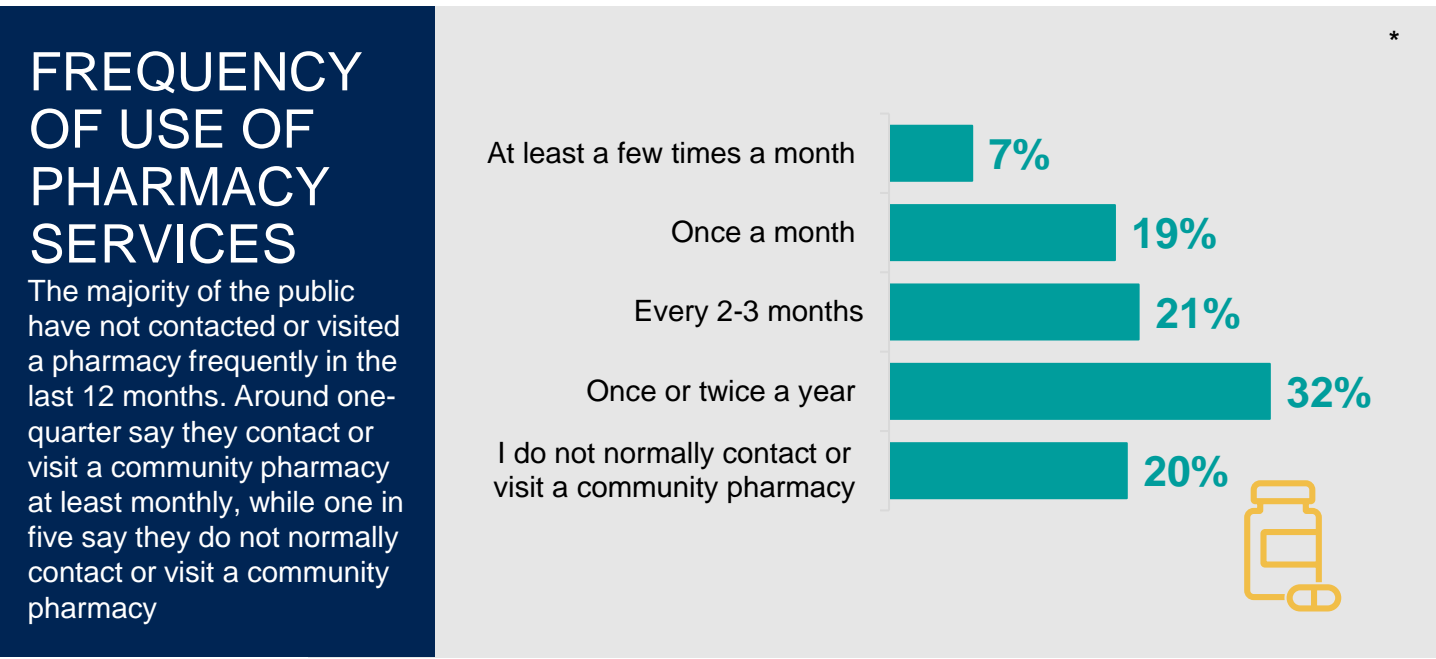


PUBLIC PERCEPTIONS OF COMMUNITY PHARMACY

A snapshot of Ipsos’ research for NHS England and NHS Improvement exploring public perceptions of community pharmacy in England and the future services they may provide. For further information, visit: <https://www.ipsos.com/en-uk/public-perceptions-community-pharmacy>



* Ipsos KnowledgePanel survey, 20th – 27th July 2022, Base: All respondents living in England (n= 2,067).
 ** Ipsos KnowledgePanel survey, 20th – 27th July 2022, Base: All respondents living in England who have contacted or visited a pharmacy in the last year (n=1,680).
 *** Ipsos KnowledgePanel survey 20th – 27th July 2022, Base: All respondents living in England who are regular, occasional and former smokers (n=949).