

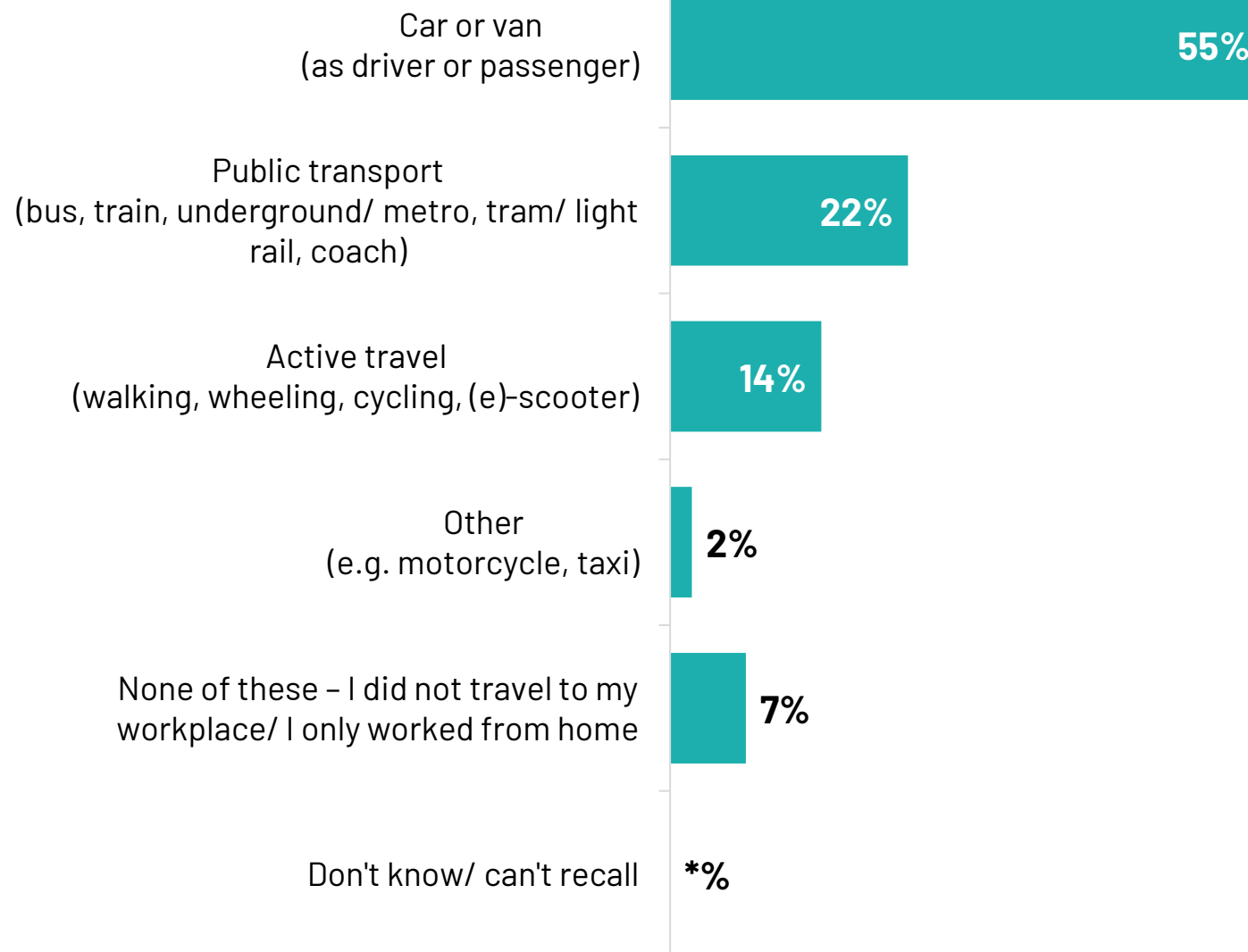
IPSOS UK TRAVEL TO WORK AND TRAVEL AFFORDABILITY

April 2025

More adults in Britain travel to work by car as the *main* transport mode, compared with those using public transport and active travel

Thinking about the last four weeks, which of the following was the main way you travelled to your workplace, if you did this?

It does not matter how many times you travelled to your workplace during the last four weeks, or if the location of your workplace changed. If you used more than one type of transport, please select the one you typically used to travel the longest distances during your commute.



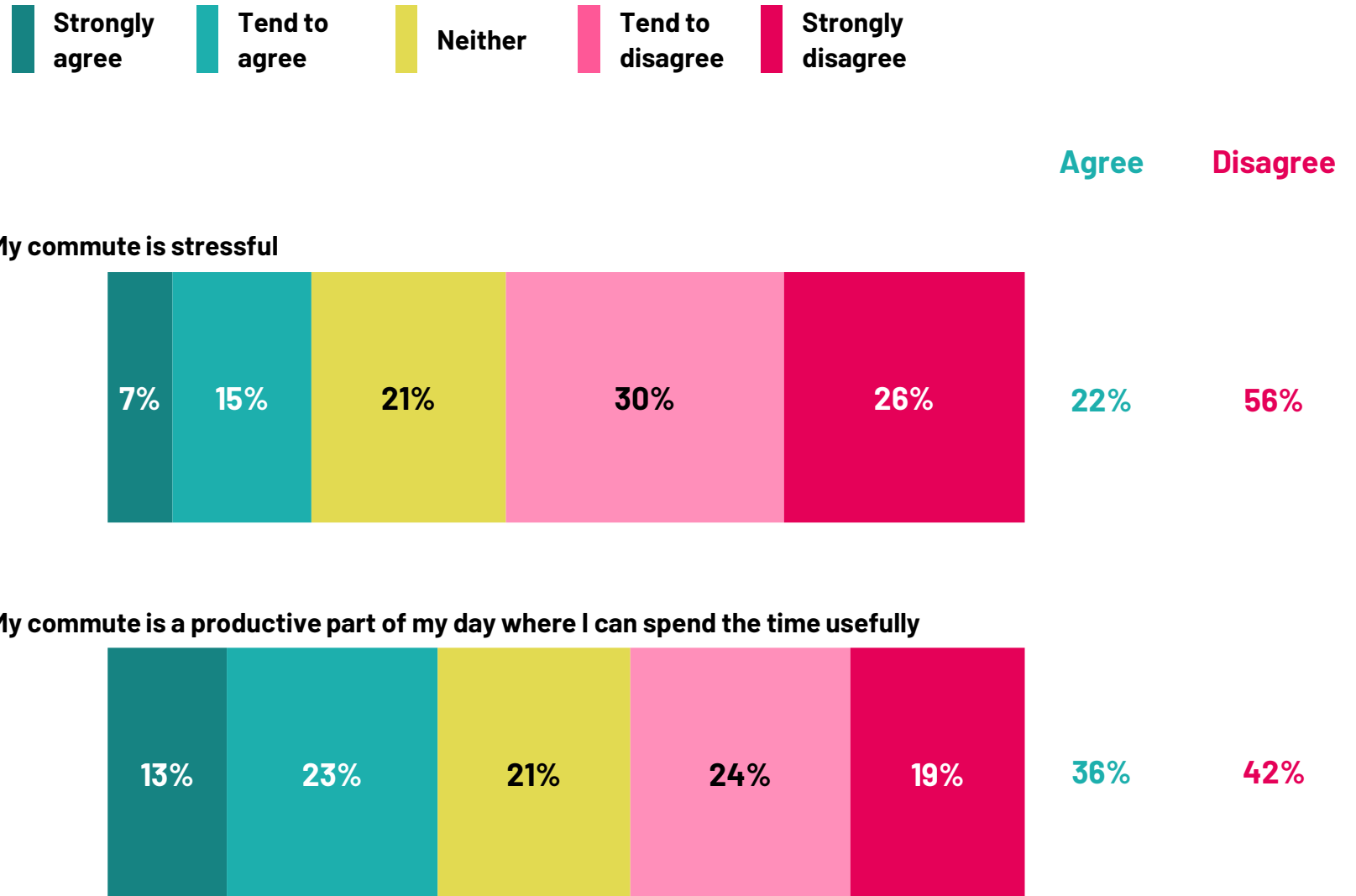
Base: 738 Online British adults aged 18-75 who are employed or self-employed, 4-7 April 2025

* Signifies a figure greater than zero but less than 1%

© Ipsos | Commuting | April 2025 | Version 1 | Public

One in five Britons who travel to work agree their commute is stressful, and two in five disagree it is a productive part of the day where they can spend the time usefully

To what extent do you agree or disagree with the following statements?

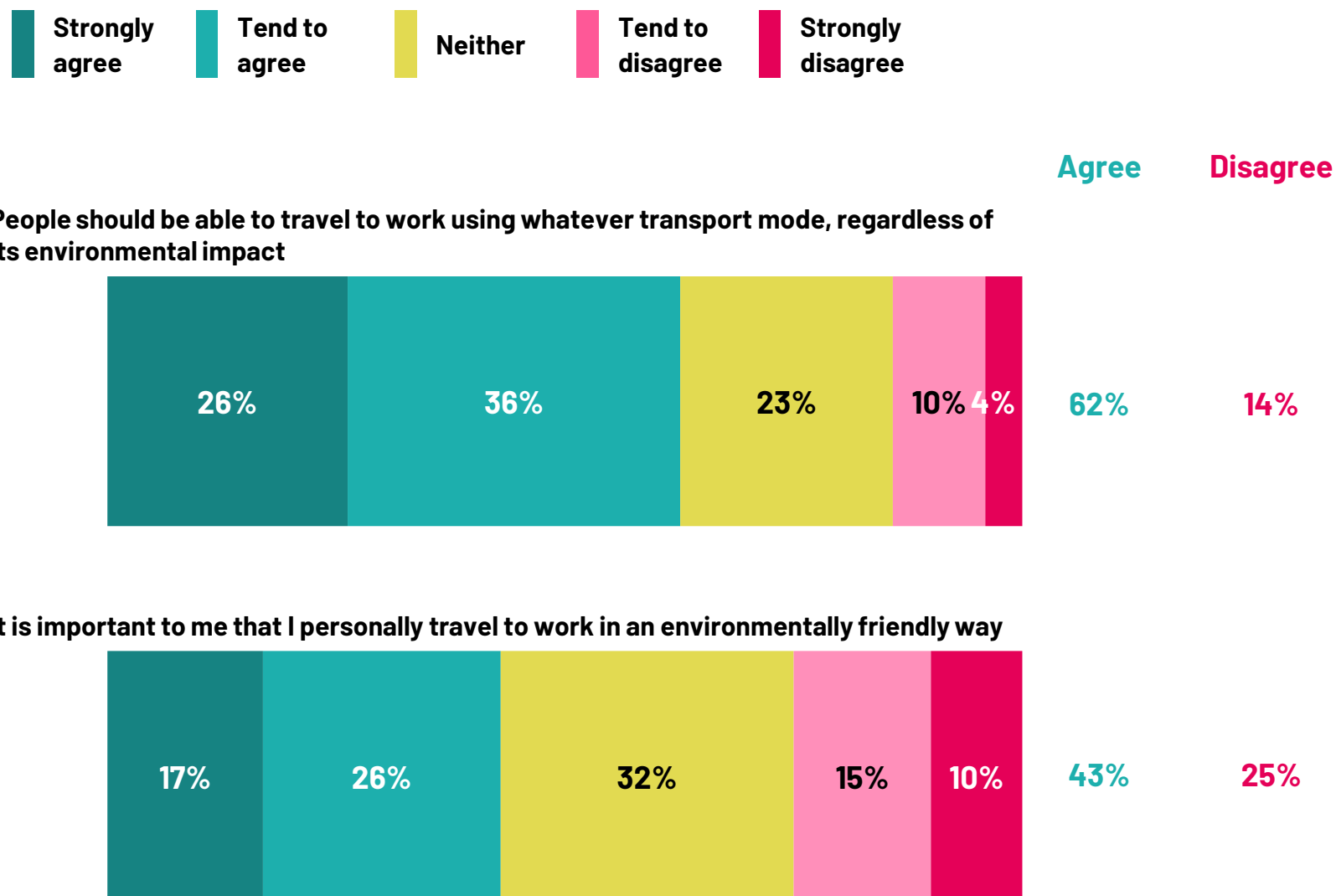


Base: 683 Online British adults aged 18-75 who are employed or self-employed who have travelled to work in the last four weeks, 4-7 April 2025

© Ipsos | Commuting | April 2025 | Version 1 | Public

Two in five commuters in Britain say it is important that they personally travel to work in an environmentally friendly way, but three in five think people should be able to commute using whatever transport mode, regardless of its environmental impact

To what extent do you agree or disagree with the following statements?

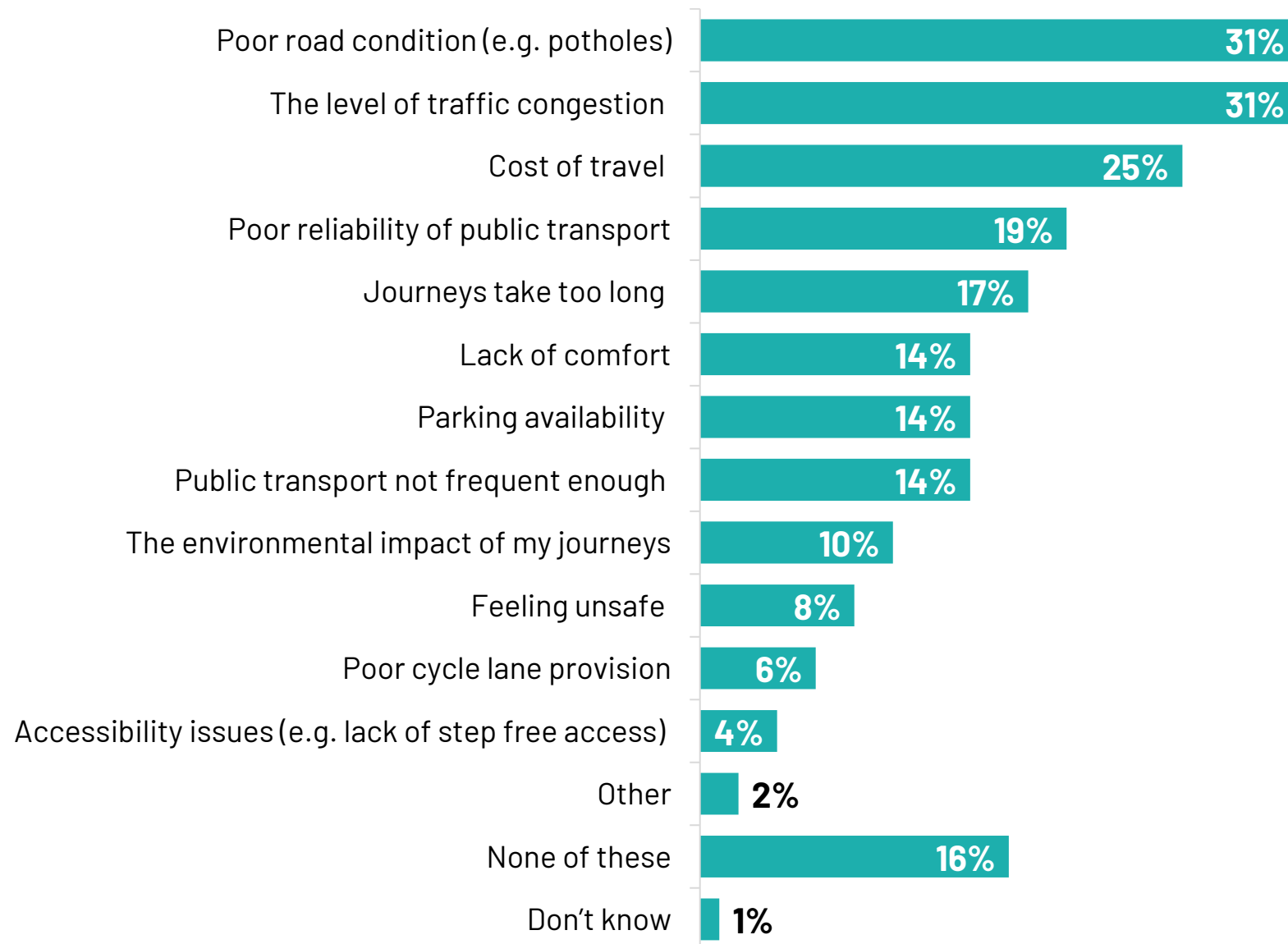


Base: 683 Online British adults aged 18-75 who are employed or self-employed who have travelled to work in the last four weeks, 4-7 April 2025

© Ipsos | Commuting | April 2025 | Version 1 | Public

Poor road condition, traffic congestion and the cost of travel are among the top negative aspects of British commuters' journeys to and from work

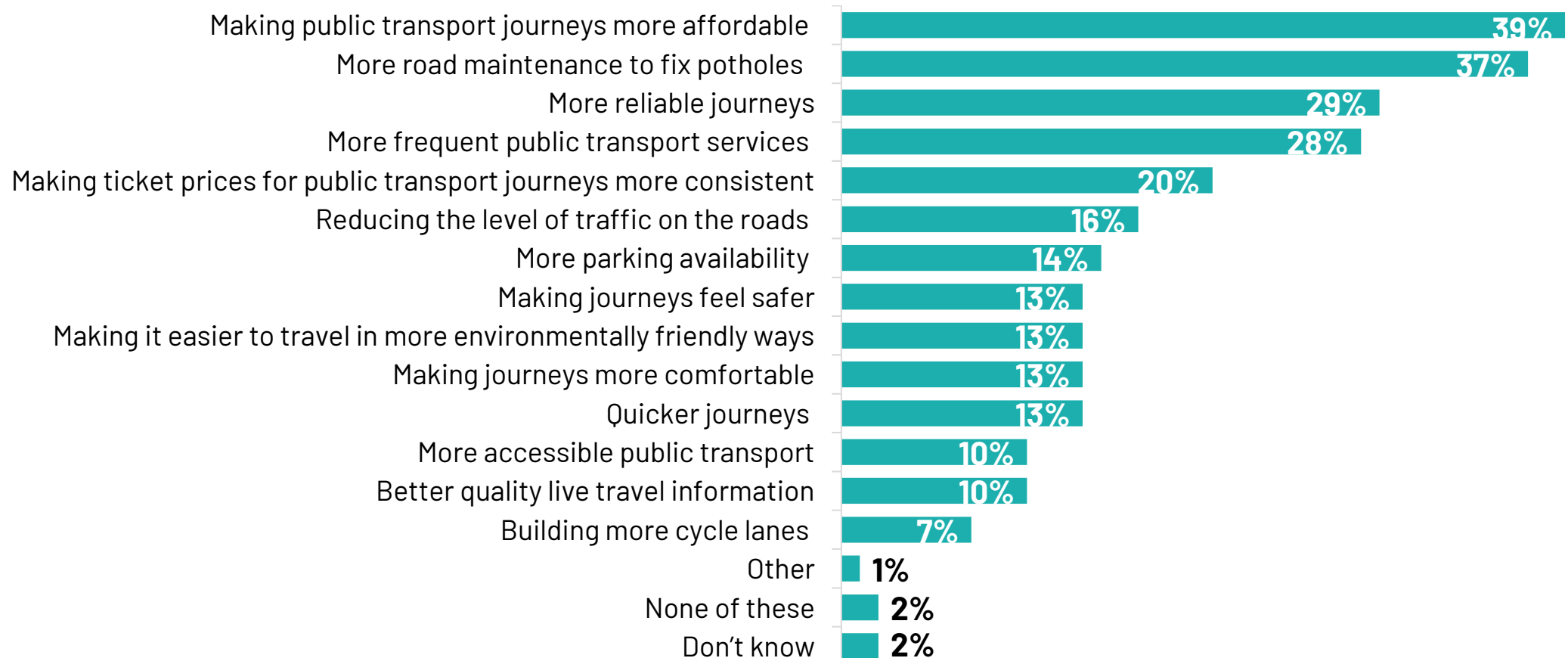
Which of the following, if any, are the most negative aspects of your journeys to and from work?



Base: 683 Online British adults aged 18-75 who are employed or self-employed who have travelled to work in the last four weeks, 4-7 April 2025

More affordable public transport and road maintenance are the public's top priorities to improve people's journeys to work in Britain

Which two or three of the following should be given highest priority to improve people's journeys to work in Britain?



Base: 1090 Online British adults aged 18-75, 4-7 April 2025

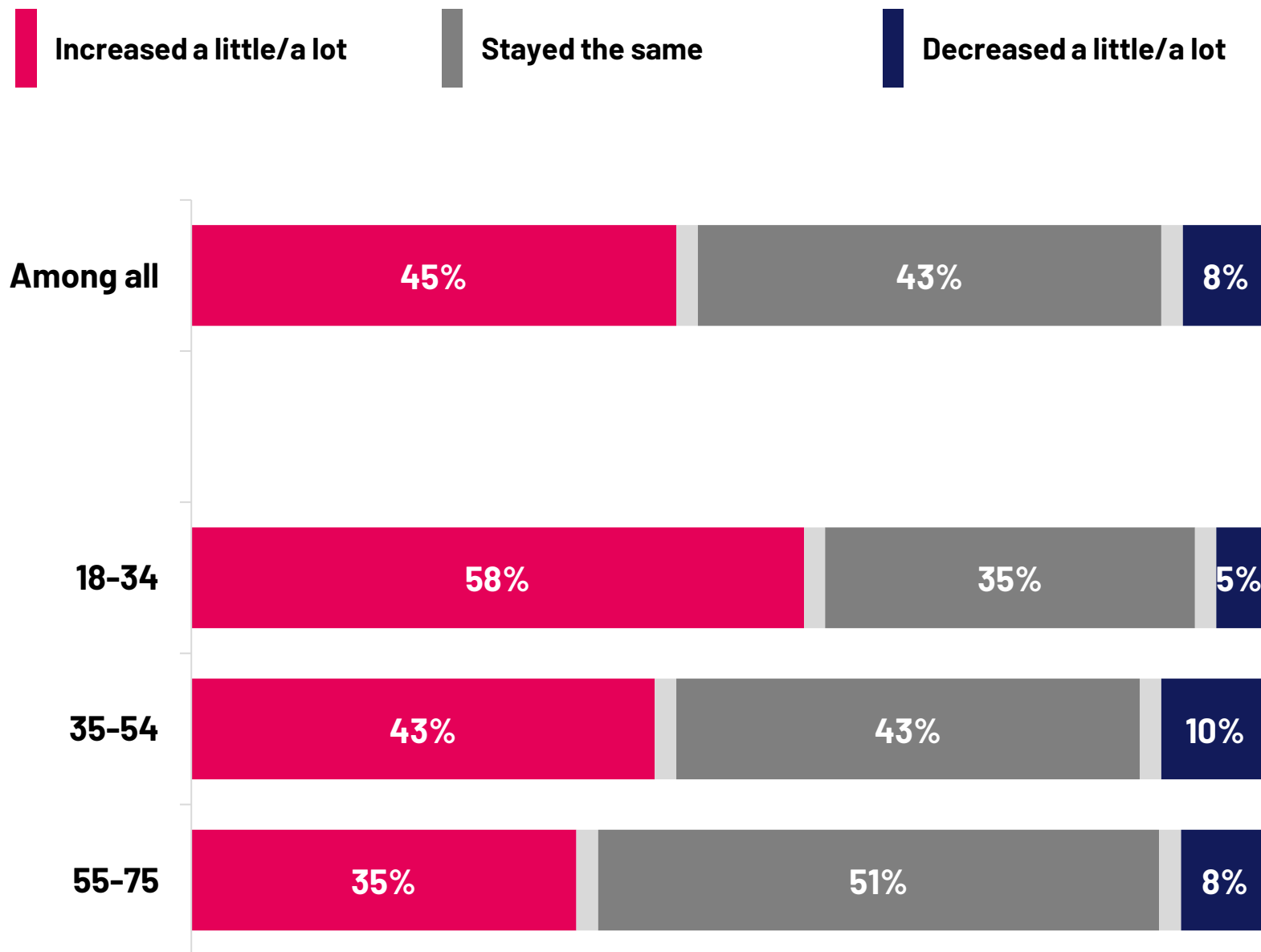
Priorities to improve people’s journeys to work in Britain – top 5 priorities by voter type (2024 General Election vote)

Which two or three of the following should be given highest priority to improve people’s journeys to work in Britain?

Conservative	Labour	Reform UK
More road maintenance to fix potholes 43%	Making public transport journeys more affordable 42%	More road maintenance to fix potholes 57%
Making public transport journeys more affordable 33%	More road maintenance to fix potholes 34%	Making public transport journeys more affordable 29%
More reliable journeys (e.g. on time, few or no delays or cancellations) 31%	More frequent public transport services 30%	More frequent public transport services 24%
More frequent public transport services 28%	More reliable journeys (e.g. on time, few or no delays or cancellations) 29%	More reliable journeys (e.g. on time, few or no delays or cancellations) 23%
Making ticket prices for public transport journeys more consistent (regardless of how far in advance you book) 19%	Making ticket prices for public transport journeys more consistent (regardless of how far in advance you book) 22%	More parking availability 21%

Forty five percent of British adults say their average travel spend has increased in 2025 compared to 2024, and this figure is higher among those aged 18-34

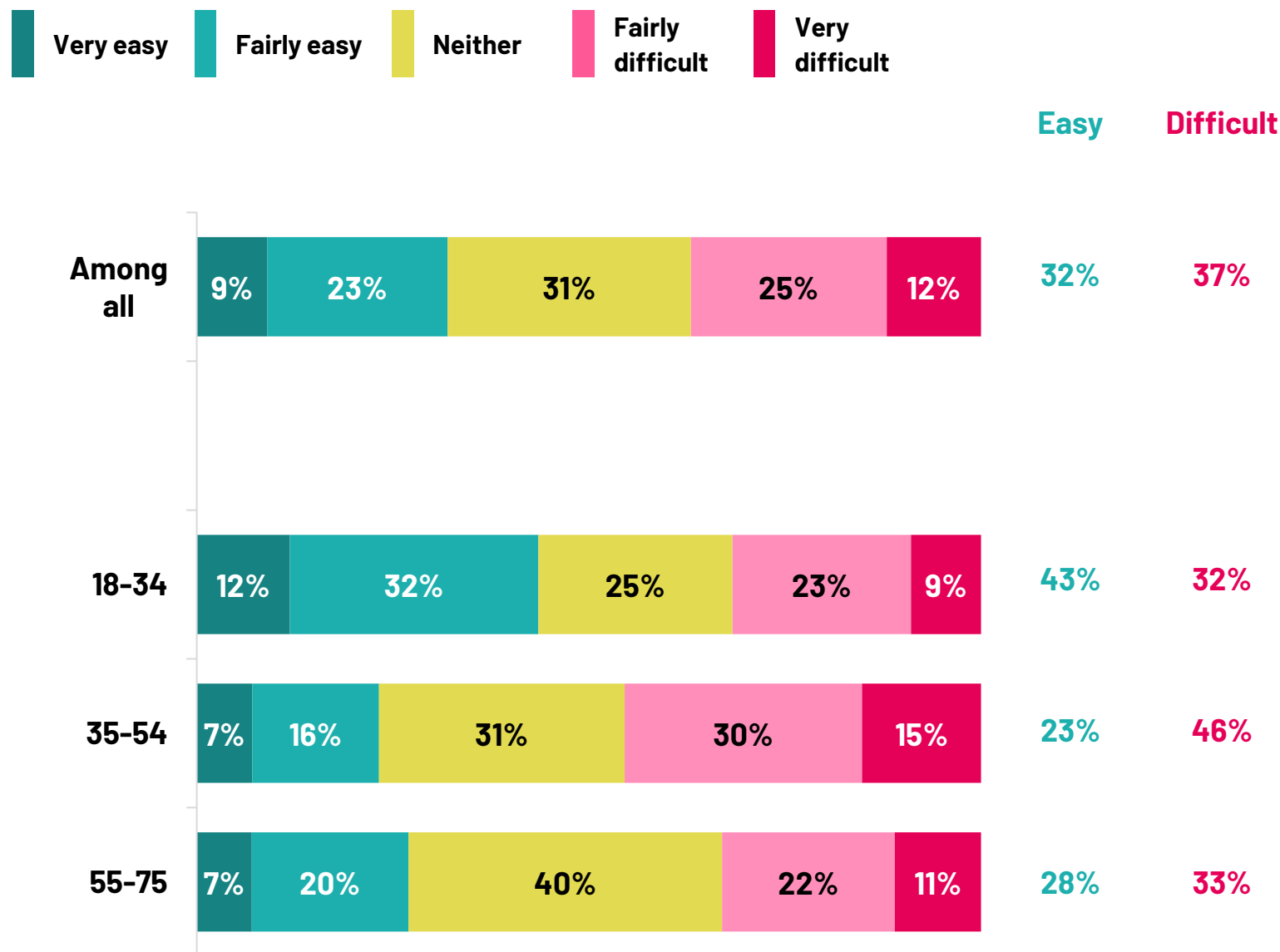
Thinking about the amount you typically spend on travel in an average month in 2025, do you think it has increased, decreased or stayed about the same as your average monthly travel spend in 2024? (Please exclude what you spend on travelling to go on holiday).



Base: 1090 Online British adults aged 18-75, 4-7 April 2025

Almost four in ten of those whose average monthly travel spend has increased since 2024 find it difficult to afford the extra, and this is highest among those aged 35-54

And how easy or difficult is it for you to afford the extra amount you spent on travel now compared to 2024 (excluding holiday travel)?



Base: 495 Online British adults aged 18-75 who say the amount they typically spend on travel in an average month in 2025 has increased compared to their average monthly travel spend in 2024, 4-7 April 2025

THANK YOU

NAME:

Lizzie Copp

DETAILS:

elizabeth.copp@ipsos.com