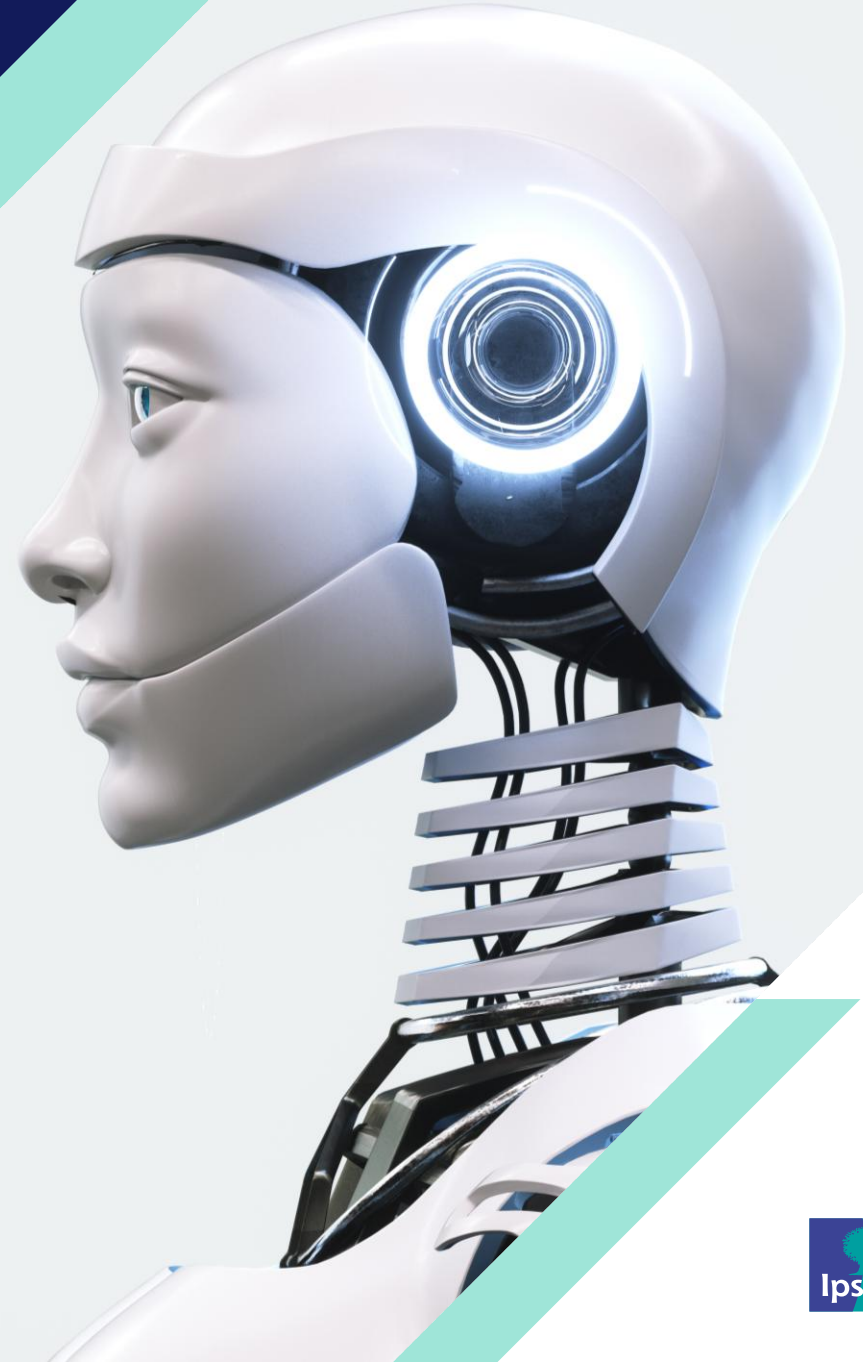


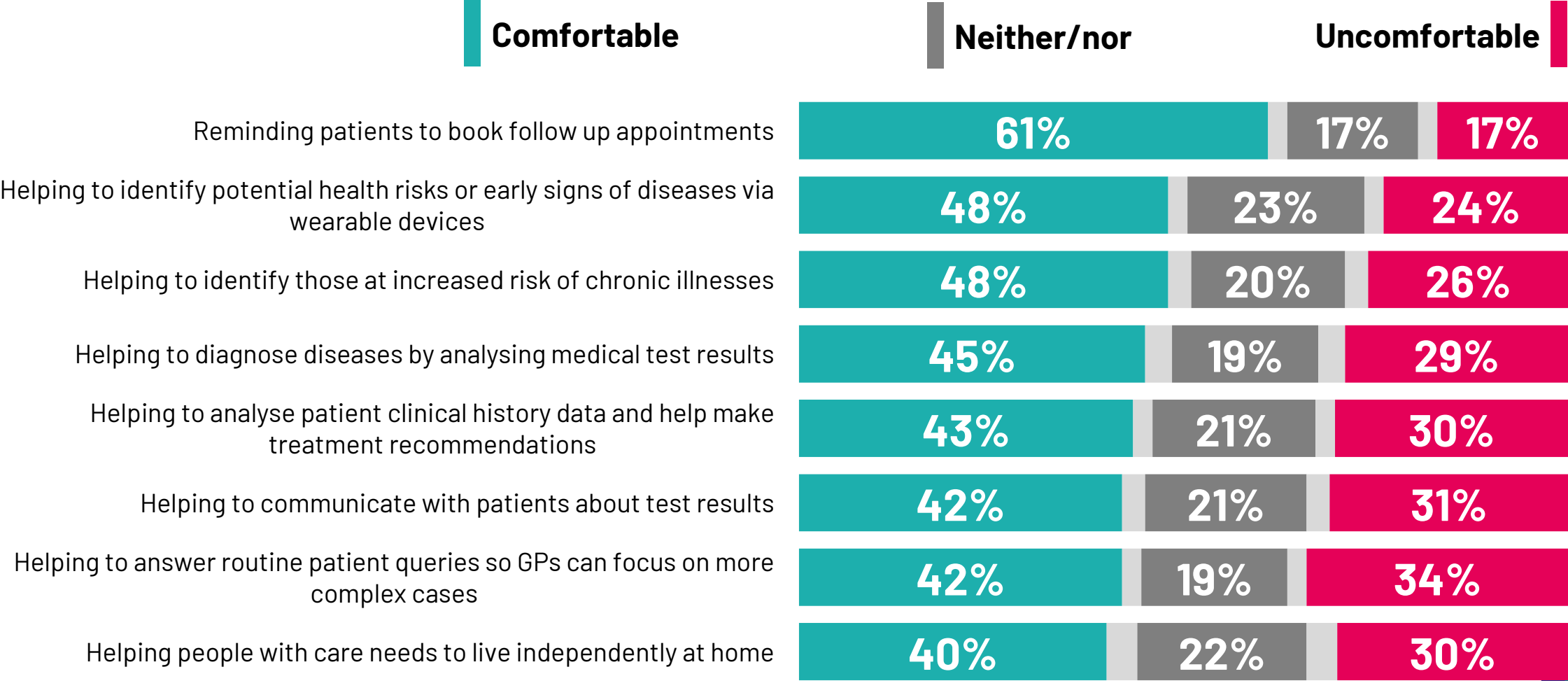
Ipsos Artificial Intelligence (AI) in healthcare

April 2025



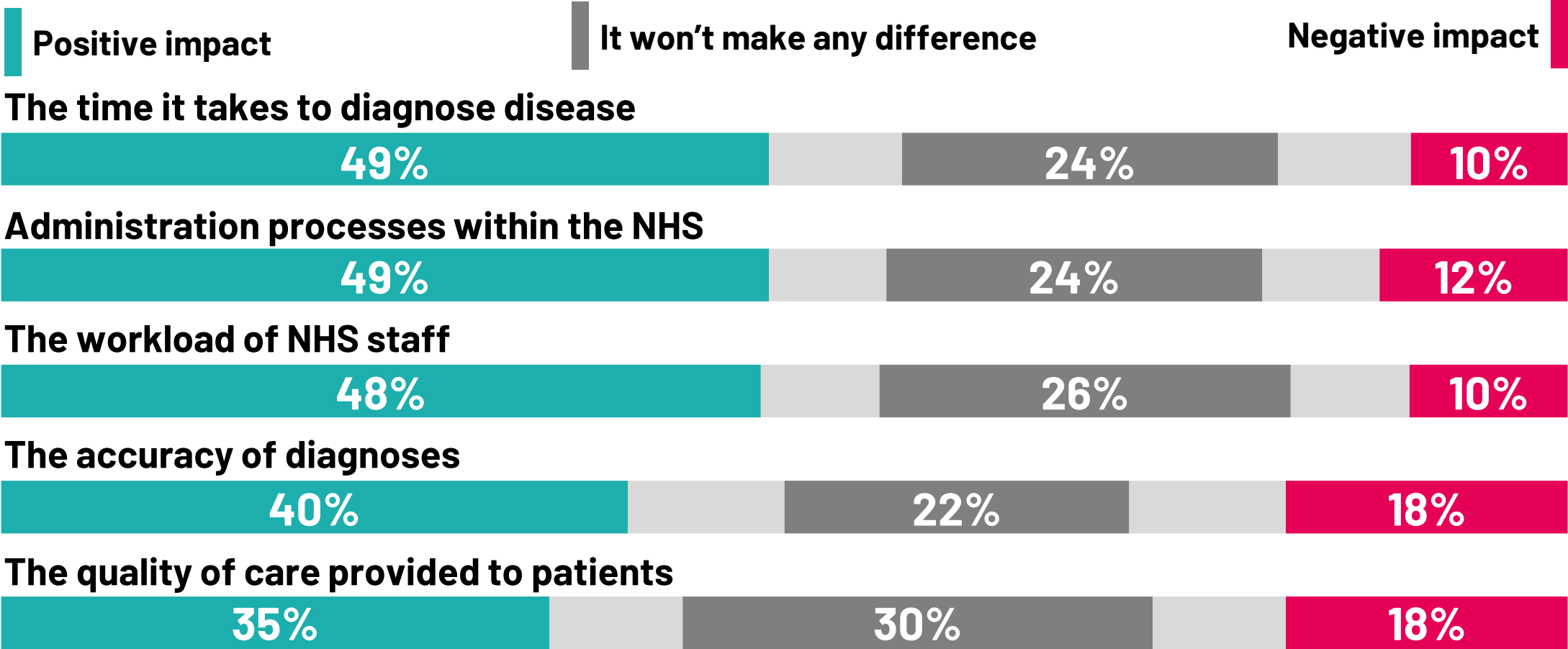
The public is comfortable rather than uncomfortable with a range of different AI uses in healthcare – especially reminding patients to book follow up appointments

How comfortable are you, if at all, with Artificial Intelligence (AI) being used to help with each of the following?



The public is more positive than negative about the potential impact of AI in healthcare, particularly on timely diagnosis, administrative processes and workloads

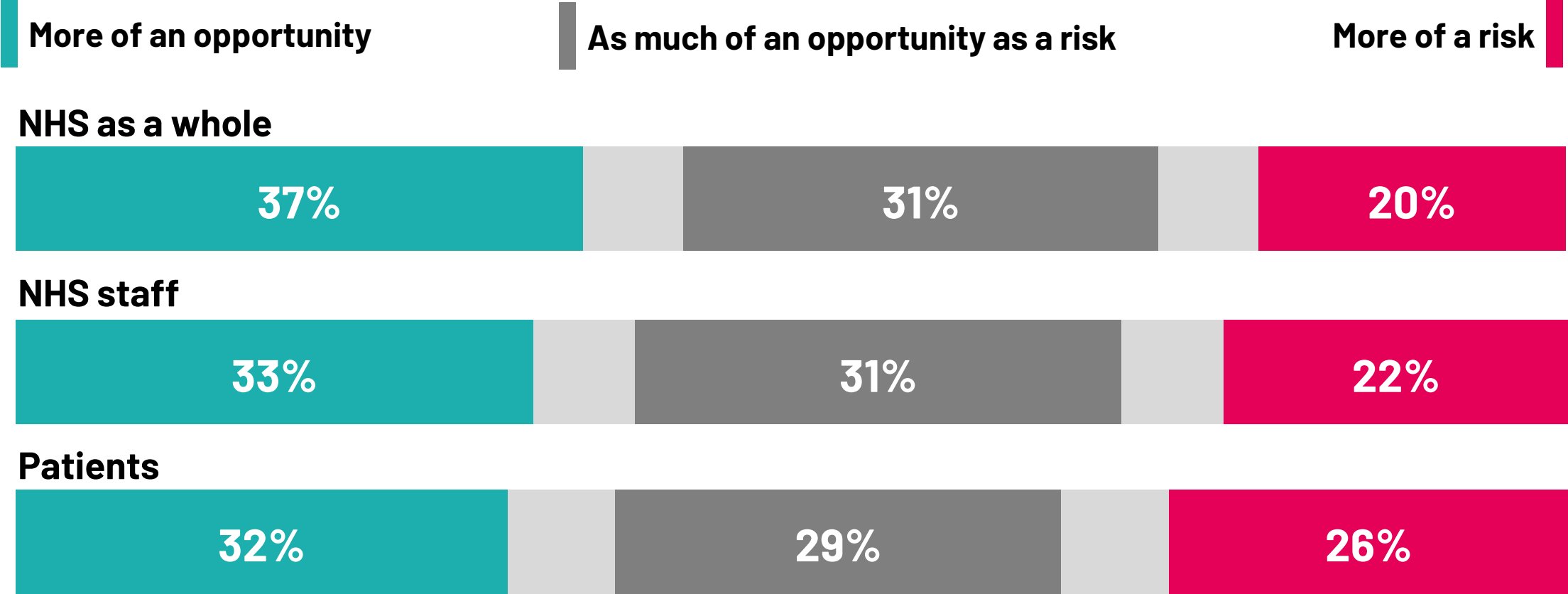
To what extent, if at all, do you think that the use of Artificial Intelligence (AI) in healthcare will have a positive or negative impact on each of the following over the next few years, or will it not make any difference?



Base: 1,100 adults aged 16-75 in Great Britain. 28 March – 2 April 2025.

The public is divided on whether Artificial Intelligence is more of an opportunity or a risk, particularly for patients

On balance, do you see Artificial Intelligence (AI) as more of an opportunity or a risk for each of the following?



Base: 1,100 adults aged 16-75 in Great Britain. 28 March – 2 April 2025.



April 2025

Ipsos – Artificial Intelligence (AI) in healthcare

For more information

Anna Quigley

Research Director

Anna.Quigley@ipsos.com

Kate Duxbury

Research Director

Kate.Duxbury@ipsos.com