



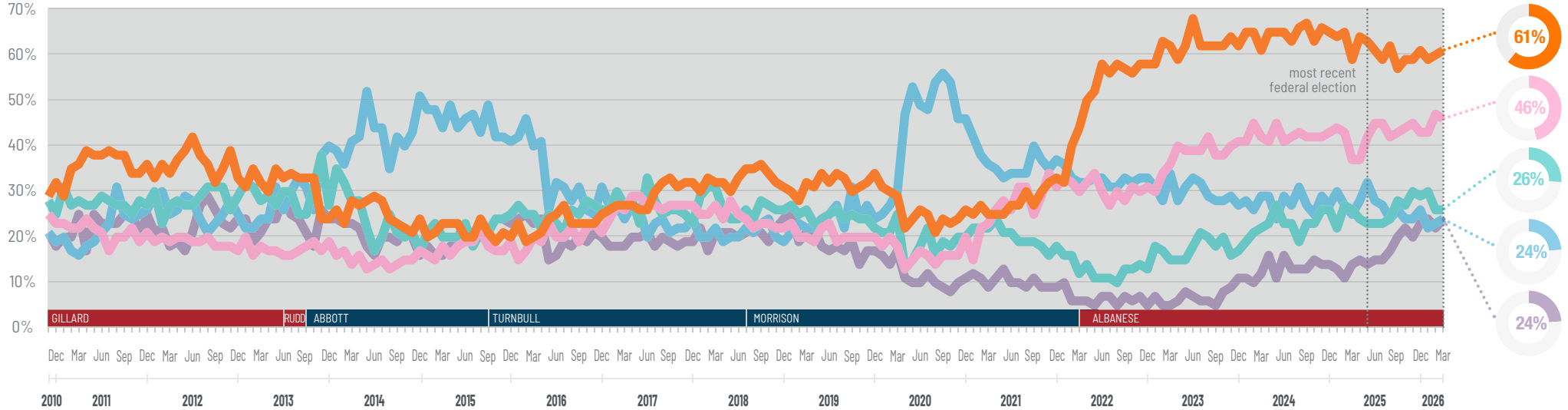
IPSOS ISSUES MONITOR MARCH 2026

The top issues facing Australia

Daniel Pole
 Head of Ipsos Public Affairs
 ✉ daniel.pole@ipsos.com
 ☎ (03) 9946 0821

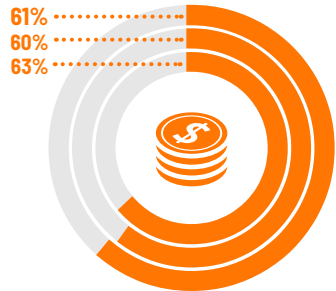


Each month we ask 1,000 Australians to select the three most important issues facing the nation. The top five issues facing Australia in March 2026 are shown below. A summary of all issues facing Australia can be found overleaf. If you would like to know more about the Ipsos Issues Monitor or Ipsos Public Affairs, please contact Daniel Pole.



Cost of Living

Mar 26
 Feb 26
 May 25



Housing

46%
 47%
 42%



Crime

26%
 26%
 23%



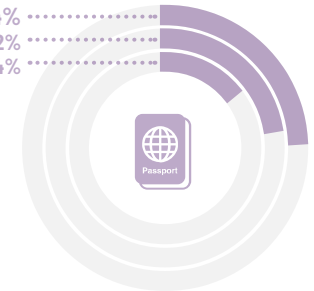
The Economy

24%
 23%
 32%



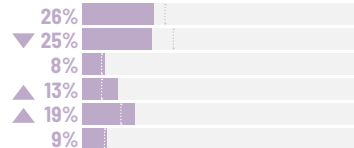
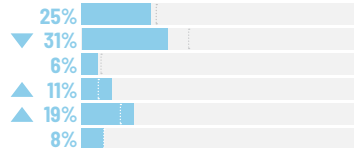
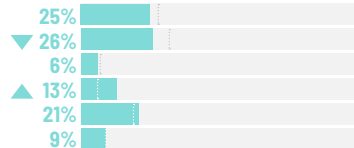
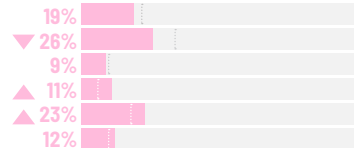
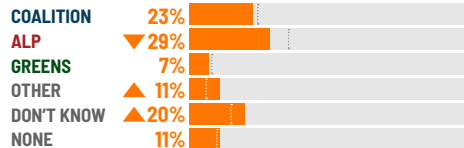
Immigration

24%
 22%
 14%



▲ ▼
 significant
 difference
 compared
 with the most
 recent month

Party most capable to manage the top issues facing Australia



▲ ▼
 significant
 difference
 compared
 with the most
 recent federal
 election



IPSOS ISSUES MONITOR MARCH 2026

The top issues facing Australia

Daniel Pole
 Head of Ipsos Public Affairs
 ✉ daniel.pole@ipsos.com
 ☎ (03) 9946 0821



	2010	2011	2012	2013	2014	2015	2016	2017	2018	2019	2020	2021	2022	2023	2024	2025	JAN 2026	FEB 2026	MAR 2026
Cost of Living	30%	36%	36%	31%	25%	21%	23%	29%	33%	32%	25%	28%	52%	62%	65%	61%	59%	60%	61%
Housing	24%	21%	19%	18%	15%	18%	20%	27%	24%	20%	17%	27%	31%	38%	42%	43%	43%	47%	46%
Crime	27%	28%	28%	29%	24%	22%	25%	27%	27%	24%	19%	20%	13%	18%	23%	25%	30%	26%	26%
The Economy	20%	22%	26%	29%	42%	45%	33%	24%	21%	24%	45%	36%	33%	30%	28%	27%	22%	23%	24%
Immigration	20%	23%	22%	23%	20%	20%	20%	19%	21%	19%	11%	10%	7%	7%	13%	16%	24%	22%	24%
Healthcare	48%	42%	39%	40%	39%	34%	38%	31%	30%	31%	34%	38%	39%	32%	29%	28%	26%	26%	21%
Petrol Prices	8%	15%	14%	11%	7%	4%	4%	6%	11%	9%	5%	8%	22%	17%	13%	9%	8%	7%	14%
Environment	20%	18%	13%	12%	10%	10%	12%	13%	16%	25%	25%	25%	21%	16%	13%	12%	11%	12%	11%
Poverty	10%	10%	10%	11%	13%	12%	13%	14%	15%	16%	15%	17%	15%	14%	12%	13%	11%	11%	11%
Taxation	6%	7%	8%	6%	8%	10%	10%	8%	8%	7%	6%	7%	7%	8%	8%	9%	8%	10%	10%
Population	10%	8%	7%	7%	6%	6%	6%	8%	13%	12%	8%	7%	5%	7%	8%	9%	9%	10%	8%
Personal Debt	15%	13%	12%	9%	6%	5%	7%	10%	10%	10%	9%	8%	9%	11%	10%	9%	7%	8%	8%
Defence	5%	4%	3%	3%	8%	16%	12%	14%	8%	7%	6%	8%	8%	5%	5%	6%	9%	6%	8%
Unemployment	10%	10%	17%	21%	26%	26%	24%	23%	18%	16%	35%	23%	10%	8%	8%	8%	7%	8%	7%
Racism	6%	6%	5%	6%	7%	8%	8%	7%	5%	5%	6%	6%	4%	4%	3%	4%	8%	6%	6%
Drug Abuse	13%	12%	12%	12%	13%	16%	17%	16%	15%	14%	11%	10%	6%	6%	6%	6%	6%	5%	4%
Education	15%	12%	16%	19%	20%	17%	18%	14%	13%	13%	11%	12%	9%	8%	7%	6%	5%	6%	4%
Indigenous Issues	4%	3%	3%	2%	2%	2%	3%	3%	3%	4%	5%	6%	5%	6%	4%	4%	3%	4%	4%
Transport	10%	10%	10%	9%	7%	7%	8%	8%	10%	9%	5%	5%	5%	5%	4%	4%	4%	3%	3%

