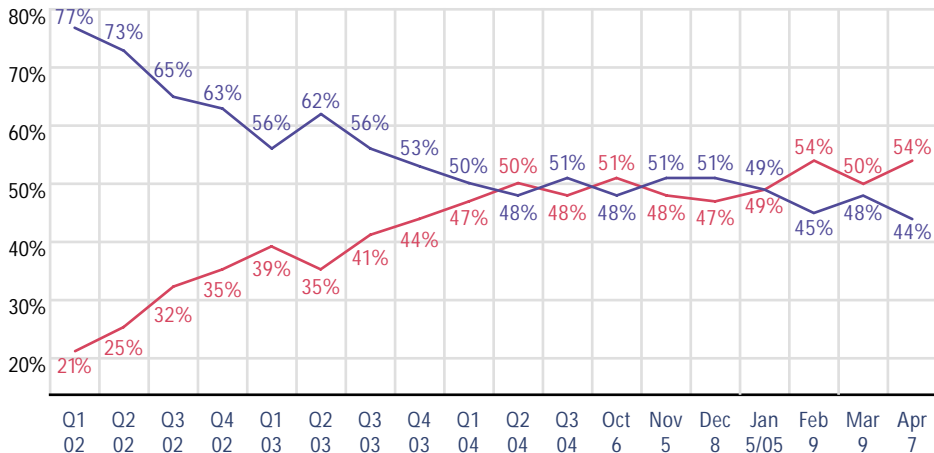


## President Bush's Approval Ratings

Overall, do you approve, disapprove or have mixed feelings about the way George W. Bush is handling his job as President? (IF APPROVE OR DISAPPROVE: ASK:) Is that strongly (approve/disapprove) or somewhat (approve/disapprove)? (IF HAVE MIXED FEELINGS OR NOT SURE: ASK:) If you had to choose, do you lean more toward approve or disapprove?

■ Approve

■ Disapprove



Methodology: Interview dates: April 4 – 6, 2005 (1,001 U.S. adults)

Margin of error:  $\pm 3.1$  for all adults

Note: Prior to 2005, Overall Presidential Approval was asked of registered voters only

Source: AP/Ipsos

© Ipsos-Public Affairs 2005

