



Ipsos Public Affairs



Ipsos Poll Conducted for Reuters

Core Political Approval

08.26.2015



These are findings from an Ipsos poll conducted

for

date



August 22 —August 26, 2015



For the survey,

a sample of

including

ages

1152

Americans

455

Democrats

415

Republicans

155

Independents

18+

were interviewed online

The precision of the Reuters/Ipsos online polls is measured using a credibility interval.

In this case, the poll has a credibility interval of plus or minus the following percentage points



For more information about credibility intervals, please see the appendix.

- The data were weighted to the U.S. current population data by:
 - Gender
 - Age
 - Education
 - Ethnicity
- Statistical margins of error are not applicable to online polls.
- All sample surveys and polls may be subject to other sources of error, including, but not limited to coverage error and measurement error.
- Figures marked by an asterisk (*) indicate a percentage value of greater than zero but less than one half of one per cent.
- Where figures do not sum to 100, this is due to the effects of rounding.
- *To see more information on this and other Reuters/Ipsos polls, please visit <http://polling.reuters.com/>.*

RIGHT DIRECTION/WRONG TRACK

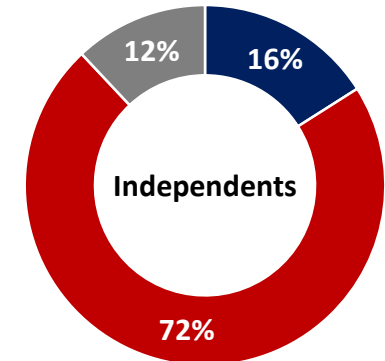
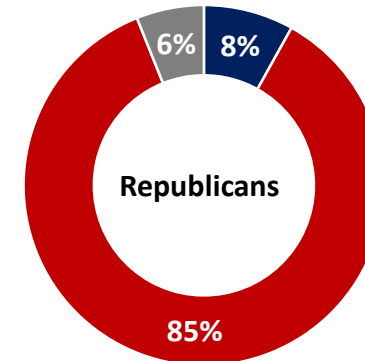
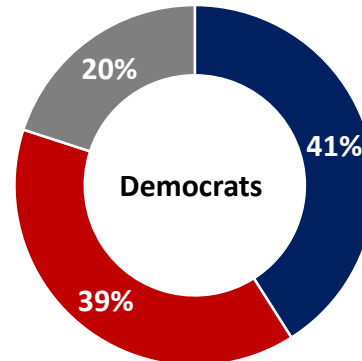
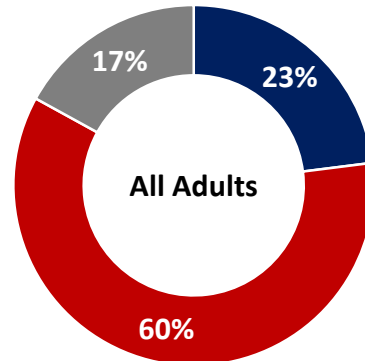
Generally speaking, would you say things in this country are heading in the right direction, or are they off on the wrong track?

August 22– August 26, 2015

Right Direction

Wrong Track

Don't Know





BARACK OBAMA

Overall, do you approve or disapprove about the way Barack Obama is handling his job as President?

Is that strongly (approve/disapprove) or somewhat (approve/disapprove)? (Asked of those who selected “approve” or “disapprove”) Q2b. If you had to choose, do you lean more towards approve or disapprove? (Asked of those who selected “don’t know”) August 22– August 26, 2015

	Total	Democrat	Republican	Independent
Strongly approve	22%	41%	4%	12%
Somewhat approve	19%	32%	3%	21%
Lean towards approve	4%	5%	2%	3%
Lean towards disapprove	2%	2%	2%	4%
Somewhat disapprove	10%	9%	10%	9%
Strongly disapprove	37%	8%	77%	42%
Not sure	6%	3%	2%	9%
TOTAL APPROVE	44%	78%	9%	36%
TOTAL DISAPPROVE	49%	19%	89%	55%



REPUBLICAN PRESIDENTIAL PRIMARIES

Please think ahead now to the next Presidential in one year's time, in 2016.

If the 2016 Republican presidential primaries were being held today, for whom of the following would you vote?

August 22– August 26, 2015

	Total (n=677)	Republican (n=412)	Independent (n=151)
Donald Trump	27%	30%	30%
Mike Huckabee	7%	10%	3%
Jeb Bush	5%	7%	4%
Benjamin Carson	5%	8%	3%
Rand Paul	4%	5%	6%
Marco Rubio	4%	5%	3%
Scott Walker	3%	5%	*%
Carly Fiorina	3%	5%	3%
Ted Cruz	3%	5%	1%
Lindsey Graham	2%	1%	3%
Rick Perry	2%	3%	1%
Bobby Jindal	2%	1%	1%
George Pataki	2%	*%	3%
Chris Christie	2%	2%	1%
John Kasich	1%	1%	1%
Jim Gilmore	1%	1%	1%
Rick Santorum	1%	1%	*%
Wouldn't vote	26%	10%	36%

TOP 3

REPUBLICAN PRESIDENTIAL CANDIDATES



Regardless of your personal preference, if the Republican Presidential Primaries came down to these candidates, for whom would you vote? August 22– August 26, 2015

TOP

	Total (n=677)	Republican (n=412)	Independent (n=151)
Donald Trump	40%	47%	37%
Jeb Bush	17%	23%	12%
Benjamin Carson	17%	21%	15%
Wouldn't vote	25%	8%	35%



DEMOCRATIC PRESIDENTIAL PRIMARIES



Please think ahead now to the next Presidential in one year's time, in 2016.

If the 2016 Democratic presidential primaries were being held today, for whom of the following would you vote?

August 22– August 26, 2015

TOP 3

	Total (n=717)	Democrat (n=452)	Independent (n=151)
Hillary Clinton	38%	48%	24%
Bernie Sanders	16%	22%	10%
Joe Biden	14%	15%	11%
Andrew Cuomo	2%	1%	4%
Jim Webb	2%	2%	6%
Martin O'Malley	2%	1%	2%
Kirsten Gillibrand	1%	1%	*%
Lincoln Chafee	*%	*%	*%
Wouldn't vote	25%	9%	43%

DEMOCRATIC PRESIDENTIAL CANDIDATES



Regardless of your personal preference, if the Democratic Presidential Primaries came down to these candidates, for whom would you **vote?** August 22 – August 26, 2015

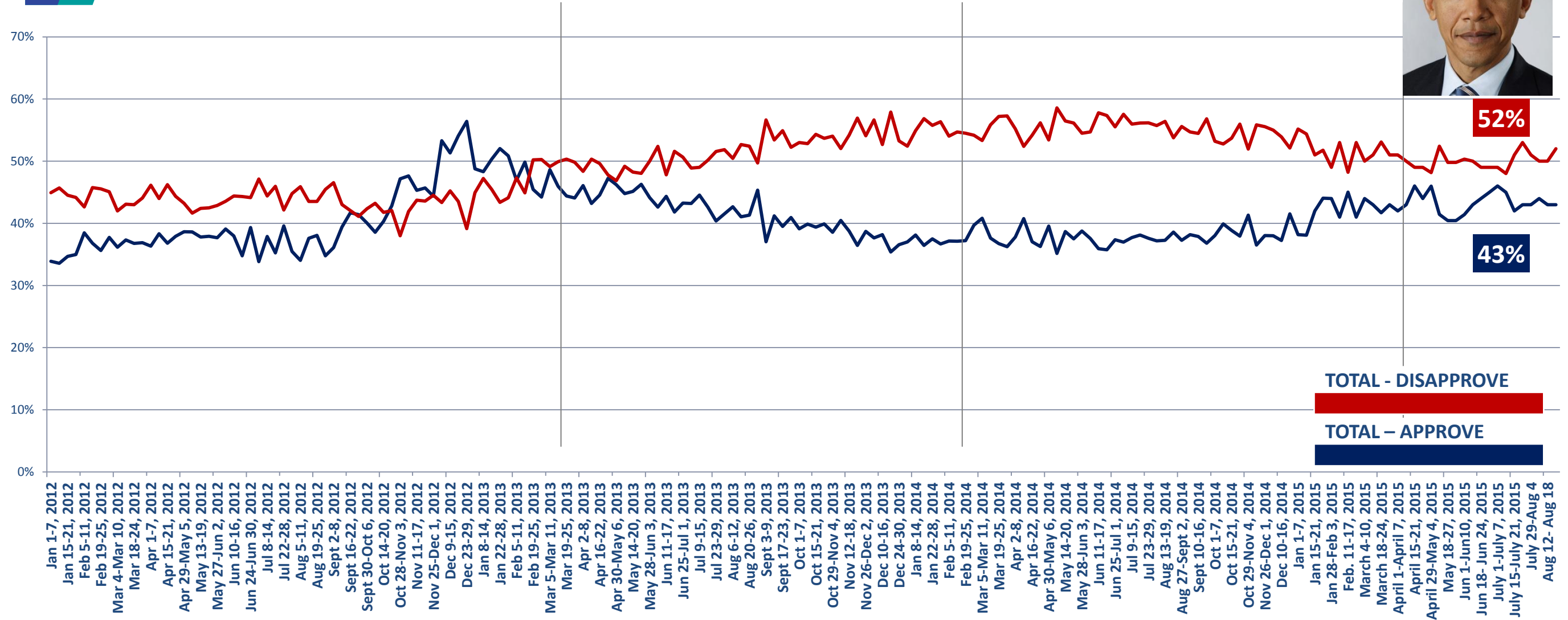
TOP

	Total (n=717)	Democrat (n=452)	Independent (n=151)
Hillary Clinton	42%	52%	29%
Bernie Sanders	19%	24%	14%
Joe Biden	16%	17%	14%
Wouldn't vote	23%	7%	43%





Weekly Presidential Approval



CORE POLITICAL APPROVAL

In your opinion, which political party has a better plan, policy or approach to each of the following?

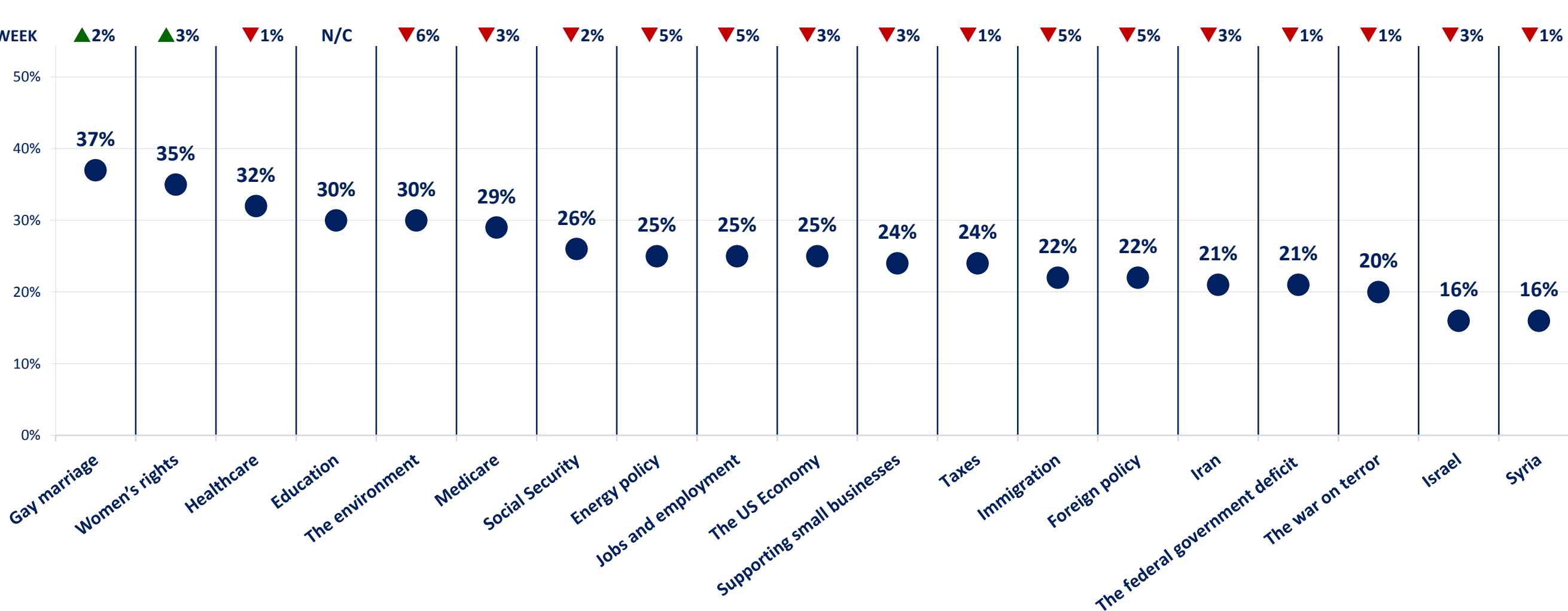
Data based on interviewing from August 17– August 26, 2015 (n=708)

All Adults (n=708)	Democratic Party	Republican Party	Independents	Other	None	Don't know	DEM/REP PARTY DIFF
Healthcare	32%	23%	7%	2%	13%	24%	9%
The war on terror	20%	28%	6%	1%	13%	31%	-8%
Iran	21%	24%	7%	2%	12%	34%	-3%
The US Economy	25%	25%	8%	2%	15%	26%	0%
Immigration	22%	29%	7%	2%	15%	25%	-7%
Social Security	26%	20%	8%	2%	16%	28%	7%
Medicare	29%	19%	6%	2%	14%	30%	11%
Taxes	24%	22%	9%	2%	15%	28%	2%
Gay marriage	37%	13%	7%	3%	14%	27%	24%
Jobs and employment	25%	26%	7%	2%	12%	28%	0%
The federal government deficit	21%	23%	8%	1%	18%	29%	-2%
Supporting small businesses	24%	24%	9%	1%	12%	30%	0%
Education	30%	19%	8%	2%	14%	28%	10%
Foreign policy	22%	27%	7%	2%	12%	30%	-5%
Women's rights	35%	16%	10%	2%	10%	26%	19%
The environment	30%	16%	11%	2%	12%	28%	14%
Israel	16%	28%	8%	1%	13%	35%	-12%
Syria	16%	20%	7%	2%	14%	41%	-3%
Energy policy	25%	19%	8%	2%	13%	32%	6%

TOP 3
Democrats
Republicans

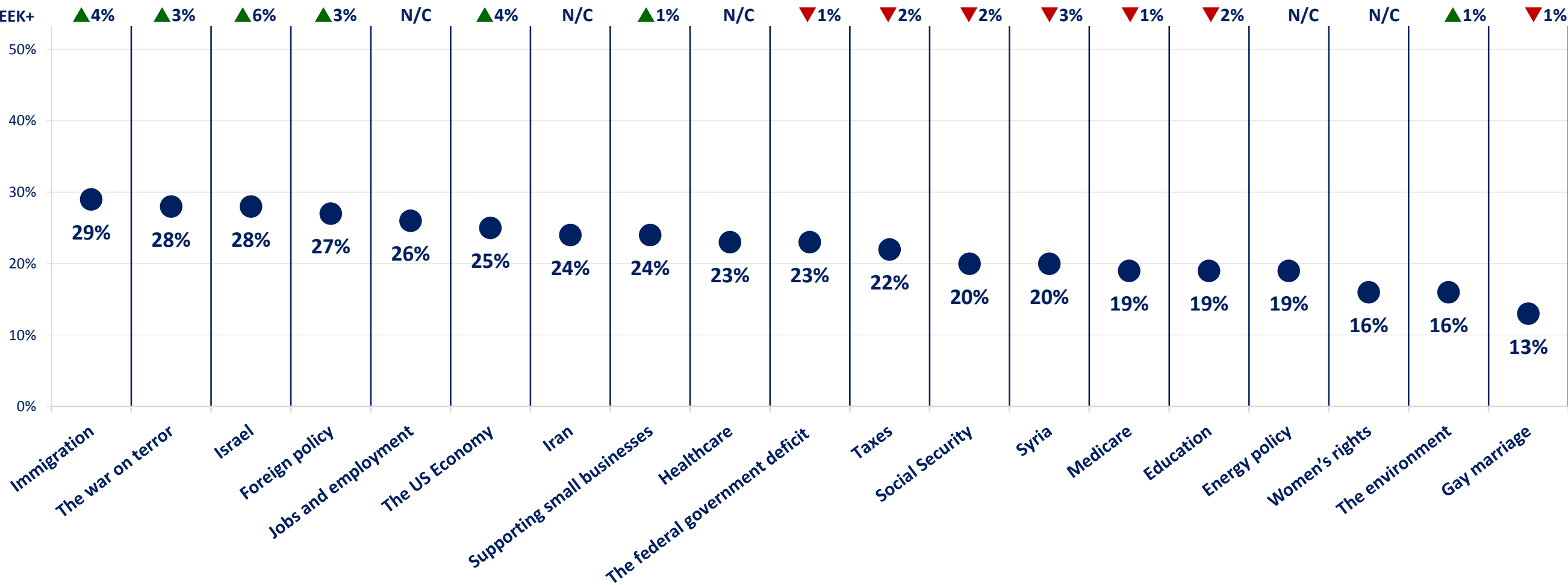
Democratic Party

CHANGE
FROM
LAST WEEK

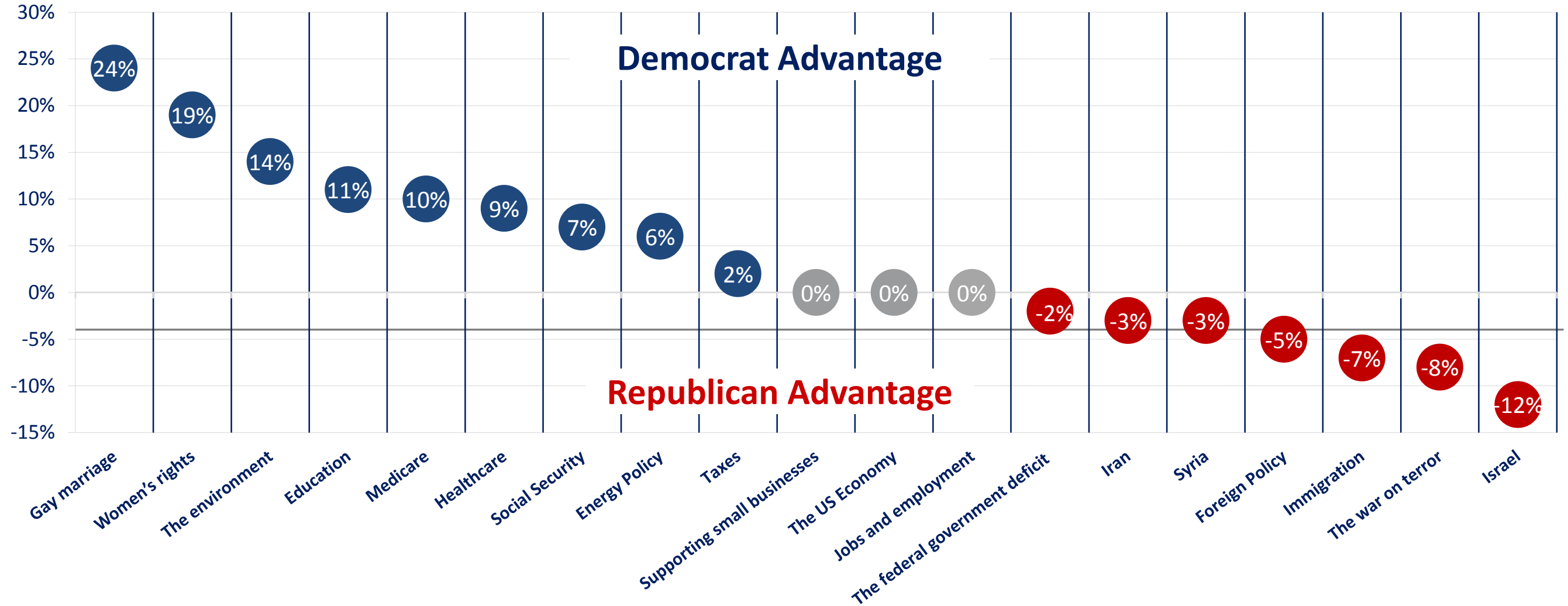


Republican Party

CHANGE
FROM
LAST WEEK+



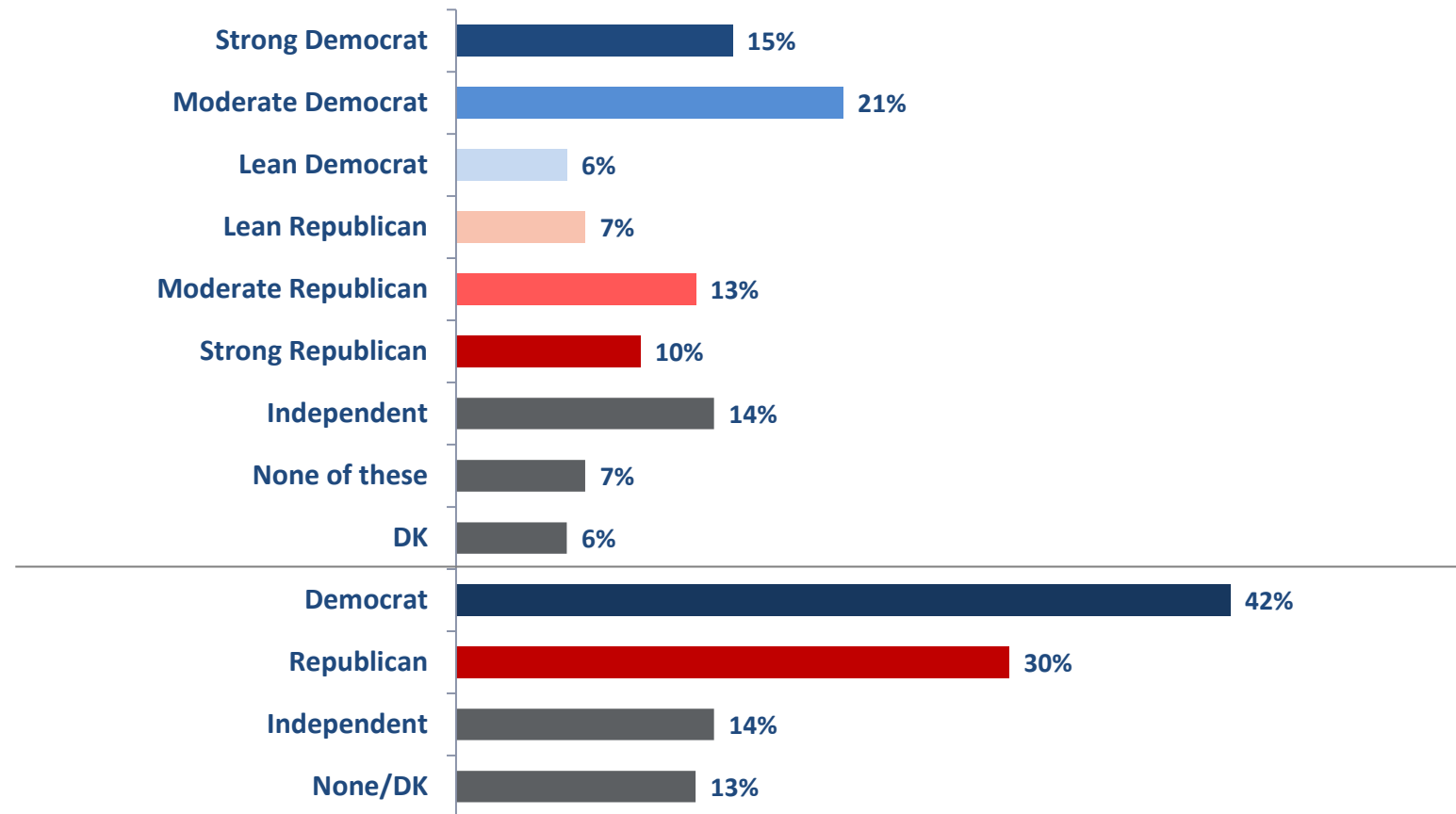
Democratic/Republican Party Difference



Party Identification

All Adults: n= 1,152

Data based on interviewing from August 22–August 26, 2015



How to Calculate Bayesian Credibility Intervals

- The calculation of credibility intervals assumes that Y has a binomial distribution conditioned on the parameter θ , i.e., $Y|\theta \sim \text{Bin}(n, \theta)$, where n is the size of our sample. In this setting, Y counts the number of “yes”, or “1”, observed in the sample, so that the sample mean (\bar{y}) is a natural estimate of the true population proportion θ . This model is often called the likelihood function, and it is a standard concept in both the Bayesian and the Classical framework. The Bayesian 1 statistics combines both the prior distribution and the likelihood function to create a posterior distribution. The posterior distribution represents our opinion about which are the plausible values for θ adjusted after observing the sample data. In reality, the posterior distribution is one’s knowledge base updated using the latest survey information. For the prior and likelihood functions specified here, the posterior distribution is also a beta distribution ($\pi(\theta/y) \sim \beta(y+a, n-y+b)$), but with updated hyper-parameters.
- Our credibility interval for θ is based on this posterior distribution. As mentioned above, these intervals represent our belief about which are the most plausible values for θ given our updated knowledge base. There are different ways to calculate these intervals based on $\pi(\theta/y)$. Since we want only one measure of precision for all variables in the survey, analogous to what is done within the Classical framework, we will compute the largest possible credibility interval for any observed sample. The worst case occurs when we assume that $a=1$ and $b=1$ and $y=n/2$. Using a simple approximation of the posterior by the normal distribution, the 95% credibility interval is given by, approximately:

$$\bar{y} \pm \frac{1}{\sqrt{n}}$$



How to Calculate Bayesian Credibility Intervals

For this poll,

the Bayesian Credibility Interval was adjusted using standard weighting design effect $1+L=1.3$ to account for complex weighting²

Examples of credibility intervals for different base sizes are below.

SAMPLE SIZE	CREDIBILITY INTERVALS
2,000	2.5
1,500	2.9
1,000	3.5
750	4.1
500	5.0
350	6.0
200	7.9
100	11.2

Ipsos does not publish data
for base sizes
(sample sizes) below 100.

¹ Bayesian Data Analysis, Second Edition, Andrew Gelman, John B. Carlin, Hal S. Stern, Donald B. Rubin, Chapman & Hall/CRC | ISBN: 158488388X | 2003

² Kish, L. (1992). Weighting for unequal Pi. Journal of Official, Statistics, 8, 2, 183200.