



Global @dvisor

The Economic Pulse of the World

Citizens in 25 Countries Assess the Current State of their Country's Economy for a Total Global Perspective



These are the findings of the *Global @dvisor* Wave 78 (G@78), an Ipsos survey conducted between Jan 22nd and Feb 5th, 2016.

- The survey instrument is conducted monthly in 25 countries around the world via the Ipsos Online Panel system. The countries reporting herein are Argentina, Australia, Belgium, Brazil, Canada, China, France, Great Britain, Germany, Hungary, India, Israel, Italy, Japan, Mexico, Peru, Poland, Russia, Saudi Arabia, South Africa, South Korea, Spain, Sweden, Turkey and the United States of America.
- For the results of the survey presented herein, an international sample of 18,143 adults aged 18-64 in the US, Israel and Canada, and age 16-64 in all other countries, were interviewed. Approximately 1000+ individuals participated on a country by country basis via the Ipsos Online Panel with the exception of Argentina, Belgium, Hungary, Israel, Mexico, Poland, Russia, Saudi Arabia, South Africa, South Korea, Sweden and Turkey, where each have a sample approximately 500+. The precision of Ipsos online polls are calculated using a credibility interval with a poll of 1,000 accurate to +/- 3.1 percentage points and of 500 accurate to +/- 4.5 percentage points. For more information on the Ipsos use of credibility intervals, please visit the Ipsos website.
- In countries where internet penetration is approximately 60% or higher the data output is comparable the general population. Of the 24 countries surveyed online, 16 yield results that are balanced to reflect the general population: Argentina, Australia, Belgium, Canada, France, Germany, Hungary, Italy, Israel, Japan, Poland, South Korea, Spain, Sweden, United Kingdom and United States. The eight remaining countries surveyed –Brazil (53% Internet penetration among the citizenry), China (46%), India (19%), Mexico (41%), Russia (59%), Saudi Arabia (59%), South Africa (47%) and Turkey (47%)—have lower levels of connectivity therefore are not reflective of the general population; however, the online sample in these countries are particularly valuable in their own right as they are more urban/educated/income than their fellow citizens and are often referred to as “Upper Deck Consumer Citizens”.

Analytic Components...

- There are three analytic components that make up the findings of this monthly Economic Pulse report. Each question is tracked and analyzed from questions dealing with:

① The currently perceived macroeconomic state of the respondent's country:

- Thinking about our economic situation, how would you describe the current economic situation in [insert country]? Is it very good, somewhat good, somewhat bad or very bad?

② The currently perceived state of the local economy:

- Rate the current state of the economy in your local area using a scale from 1 to 7, where 7 means a very strong economy today and 1 means a very weak economy.

③ A six month outlook for the local economy:

- Looking ahead six months from now, do you expect the economy in your local area to be much stronger, somewhat stronger, about the same, somewhat weaker, or much weaker than it is now?



Turbulent Month for All Assessment Categories

- As a result of unstable markets around the world, and continuing decline of China and the Eurozone, the global national economic average (36%) is down 4 points to its lowest assessment score since September 2013. All of the regions experienced decline this month except for the Middle East/Africa (46%), where there was no change in the average.
- The local economic assessment average (29%) is down one point this month, after holding steady without change since October 2015. The local average is down across all regions of the world except for APAC (32%, +1 pts.).
- Consistent with a downward trend of both national and local national assessments, the global average of future outlook for local economy is down two points, with less than one quarter (24%) of global citizens expecting the economy in their local area to be stronger six months from now. On the regional level, all except North America (21%, +1 pts.) and G8 (16%, N/C) experienced negative change since last sounding.

Global Average of National Economic Assessment Down Four Points: 36%

- Losing ground this month, the average **global economic assessment of national economies surveyed in 25 countries is down four points with 36% of global citizens rating their national economies as ‘good’.**
- Saudi Arabia (88%) remains at the top in the national economic assessment category, followed by India (76%), Germany (72%), China (61%), Sweden (56%) and Australia (56%). Once again this month, Brazil (8%) has the lowest assessment score, followed by France (9%), South Korea (13%), South Africa (13%), Italy (14%), Spain (14%), Mexico (17%) and Hungary (19%).
- *Countries with the greatest improvements in this wave:* Israel (47%, +5 pts.), Hungary (19%, +3 pts.), Saudi Arabia (88%, +2 pts.), South Korea (13%, +2 pts.), Great Britain (49%, +1 pts.), Italy (14%, +1 pts.) and South Africa (13%, +1 pts.).
- *Countries with the greatest declines:* Russia (21%, -11 pts.), Canada (34%, -10 pts.), Sweden (56%, -9 pts.), Turkey (36%, -9 pts.), France (9%, -9 pts.), India (76%, -8 pts.), Germany (72%, -7 pts.), Mexico (17%, -7 pts.), Peru (46%, -6 pts.), China (61%, -5 pts.), Argentina (24%, -4 pts.), Spain (14%, -4 pts.), Australia (56%, -3 pts.) and Japan (26%, -4 pts.).

Global Average of Local Economic Assessment (29%) Down One Point

- When asked to assess their local economy, an average of **29% of those surveyed in 25 countries agree that the state of the current economy in their local area is 'good'. The local economic assessment is down one point since last month.**
- Saudi Arabia (61%) regains the top spot in the local assessment category, followed by Israel (58%), Sweden (58%), Germany (53%), India (52%), China (50%), the United States (40%) and Australia (38%). Mexico (9%) slides into the lowest spot in this assessment, followed by South Africa (10%), Spain (11%), Brazil (13%), Italy (13%), South Korea (13%), Hungary (15%) and Japan (15%).
- *Countries with the greatest improvements in this wave:* Israel (58%, +8 pts.), Australia (38%, +6 pts.), Russia (24%, +6 pts.), Belgium (24%, +5 pts.), the United States (40%, +4 pts.), Japan (15%, +4 pts.), South Korea (13%, +3 pts.), Saudi Arabia (61%, +2 pts.) and Poland (28%, +2 pts.).
- *Countries with the greatest declines in this wave:* Canada (21%, -11 pts.), Mexico (9%, -11 pts.), Turkey (29%, -10 pts.), India (52%, -9 pts.), China (50%, -4 pts.), Peru (20%, -4 pts.), France (16%, -4 pts.), Spain (11%, -4 pts.), Germany (53%, -3 pts.) and Brazil (13%, -3 pts.).

Global Average of Future Outlook for Local Economy (24%) Down Two Points

- The future outlook is down two points since last month, with an average of one quarter (24%) of global citizens surveyed in 25 countries expecting their local economy to be stronger six months from now.
- India (57%) remains in the lead in this assessment category, followed by Argentina (56%), Brazil (53%), Peru (53%), Saudi Arabia (51%), China (41%), Mexico (31%), Russia (31%), Turkey (26%) and the United States (25%). Sweden (5%) and France (5%) share the lowest future outlook score this month, followed by Belgium (10%), South Korea (10%), Hungary (11%), Japan (11%), Italy (12%), Israel (13%) and South Africa (13%).
- *Countries with the greatest improvements in this wave:* Russia (31%, +12 pts.), Peru (53%, +4 pts.), Poland (16%, +3 pts.), the United States (25%, +2 pts.), Canada (17%, +2 pts.), and South Korea (10%, +2 pts.).
- *Countries with the greatest declines in this wave:* India (57%, -12 pts.), Argentina (56%, -9 pts.), Turkey (26%, -9 pts.), China (41%, -7 pts.), France (5%, -6 pts.), Spain (19%, -4 pts.), Sweden (5%, -2 pts.), Germany (15%, -2 pts.), Great Britain (14%, -2 pts.), Israel (13%, -2 pts.) and Italy (12%, -2 pts.).

1. National Economic Assessments: Countries at a Glance Compared to the Last Wave...

Those Countries Where the National Area Economic Assessment...

is HIGHEST this month		has experienced an IMPROVEMENT since last sounding			has experienced a DECLINE since last sounding			is LOWEST this month	
Saudi Arabia	88%	Israel	▲	5	Russia	▼	11	Brazil	8%
India	76%	Hungary	▲	3	Canada	▼	10	France	9%
Germany	72%	Saudi Arabia	▲	2	Sweden	▼	9	South Korea	13%
China	61%	South Korea	▲	2	Turkey	▼	9	South Africa	13%
Sweden	56%	Great Britain	▲	1	France	▼	9	Italy	14%
Australia	56%	Italy	▲	1	India	▼	8	Spain	14%
Great Britain	49%	South Africa	▲	1	Germany	▼	7	Mexico	17%
Israel	47%				Mexico	▼	7	Hungary	19%
Peru	46%				Peru	▼	6	Russia	21%
US	44%				China	▼	5	Argentina	24%
Belgium	38%				Argentina	▼	4	Japan	26%
Turkey	36%				Spain	▼	4	Poland	33%
					Australia	▼	3	Canada	34%
					Japan	▼	3		
					Belgium	▼	2		
					Poland	▼	2		
					US	▼	1		

Thinking about our economic situation, how would you describe the current economic situation in [insert country]?
Is it very good, somewhat good, somewhat bad or very bad?

1. National Economic Assessment: Regions at a Glance Compared to the Last Wave...

REGION (in descending order by NET)	NET 'Good'	CHANGE (since last sounding)
Middle East/ Africa	46%	N/C
APAC	42%	▼5%
BRIC	42%	▼6%
North America	39%	▼6%
Europe	34%	▼3%
G-8 Countries	34%	▼5%
LATAM	16%	▼4%

Thinking about our economic situation, how would you describe the current economic situation in [insert country]?
Is it very good, somewhat good, somewhat bad or very bad?

2. Local Economic Assessment: Countries at a Glance Compared to the Last Wave...

Those Countries Where the Local Area Economic Assessment...

is HIGHEST this month		has experienced an IMPROVEMENT since last sounding			has experienced a DECLINE since last sounding			is LOWEST this month	
Saudi Arabia	61%	Israel	▲	8	Canada	▼	11	Mexico	9%
Israel	58%	Australia	▲	6	Mexico	▼	11	South Africa	10%
Sweden	58%	Russia	▲	6	Turkey	▼	10	Spain	11%
Germany	53%	Belgium	▲	5	India	▼	9	Brazil	13%
India	52%	US	▲	4	China	▼	4	Italy	13%
China	50%	Japan	▲	4	Peru	▼	4	South Korea	13%
US	40%	South Korea	▲	3	France	▼	4	Hungary	15%
Australia	38%	Saudi Arabia	▲	2	Spain	▼	4	Japan	15%
Great Britain	32%	Poland	▲	2	Germany	▼	3	France	16%
Turkey	29%				Brazil	▼	3	Argentina	20%
Poland	28%				Sweden	▼	1	Peru	20%
Belgium	24%				Great Britain	▼	1	Canada	21%
Russia	24%				Hungary	▼	1		

Rate the current state of the economy in your local area using a scale from 1 to 7, where 7 means a very strong economy today and 1 means a very weak economy

2. Local Economic Assessment: Regions at a Glance Compared to the Last Wave...

REGION (in descending order by NET)	NET 'Strong' Top 3 Box (5-6-7)	CHANGE (since last sounding)
Middle East/Africa	39%	▼1%
BRIC	35%	▼2%
APAC	32%	▲1%
North America	31%	▼3%
Europe	28%	▼1%
G-8 Countries	27%	▼1%
LATAM	14%	▼5%

Rate the current state of the economy in your local area using a scale from 1 to 7, where 7 means a very strong economy today and 1 means a very weak economy

3. Six Month Outlook on the Local Economy: Countries at a Glance Compared to the Last Wave...

Countries where the Assessment of the Local Economic Strengthening ...

is HIGHEST this month		has experienced an IMPROVEMENT since last sounding			has experienced a DECLINE since last sounding			is LOWEST this month	
India	57%	Russia	▲	12	India	▼	12	Sweden	5%
Argentina	56%	Peru	▲	4	Argentina	▼	9	France	5%
Brazil	53%	Poland	▲	3	Turkey	▼	9	Belgium	10%
Peru	53%	US	▲	2	China	▼	7	South Korea	10%
Saudi Arabia	51%	Canada	▲	2	France	▼	6	Hungary	11%
China	41%	South Korea	▲	2	Spain	▼	4	Japan	11%
Mexico	31%				Sweden	▼	4	Italy	12%
Russia	31%				Germany	▼	2	Israel	13%
Turkey	26%				Great Britain	▼	2	South Africa	13%
US	25%				Israel	▼	2	Australia	14%
Spain	19%				Italy	▼	2	Great Britain	14%
Canada	17%				Mexico	▼	1	Germany	15%
					Australia	▼	1	Poland	16%

Looking ahead six months from now, do you expect the economy in your local area to be much stronger, somewhat stronger, about the same, somewhat weaker, or much weaker than it is now?

3. Six Month Outlook on Local Economy: Regions at a Glance Compared to Last Wave...

REGION (in descending order by NET)	NET 'Stronger'	CHANGE (since last sounding)
LATAM	46%	▼ 4%
BRIC	46%	▼ 1%
APAC	27%	▼ 1%
Middle East/Africa	26%	▼ 2%
North America	21%	▲ 2%
G-8 Countries	16%	N/C
Europe	12%	▼ 2%

Looking ahead six months from now, do you expect the economy in your local area to be much stronger, somewhat stronger, about the same, somewhat weaker, or much weaker than it is now?

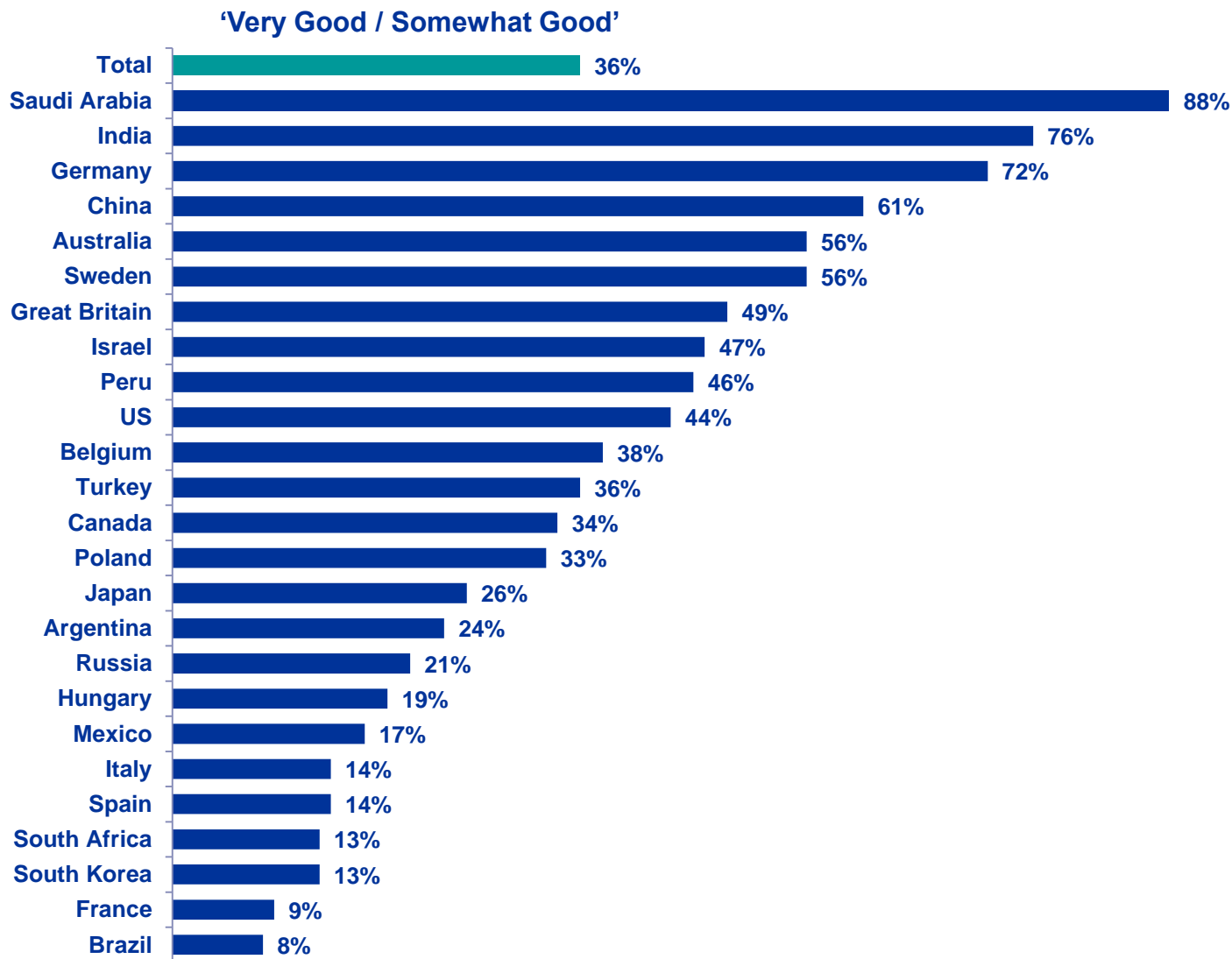
DETAILED FINDINGS

① Assessing The Current Economic Situation ...

...in Their Country

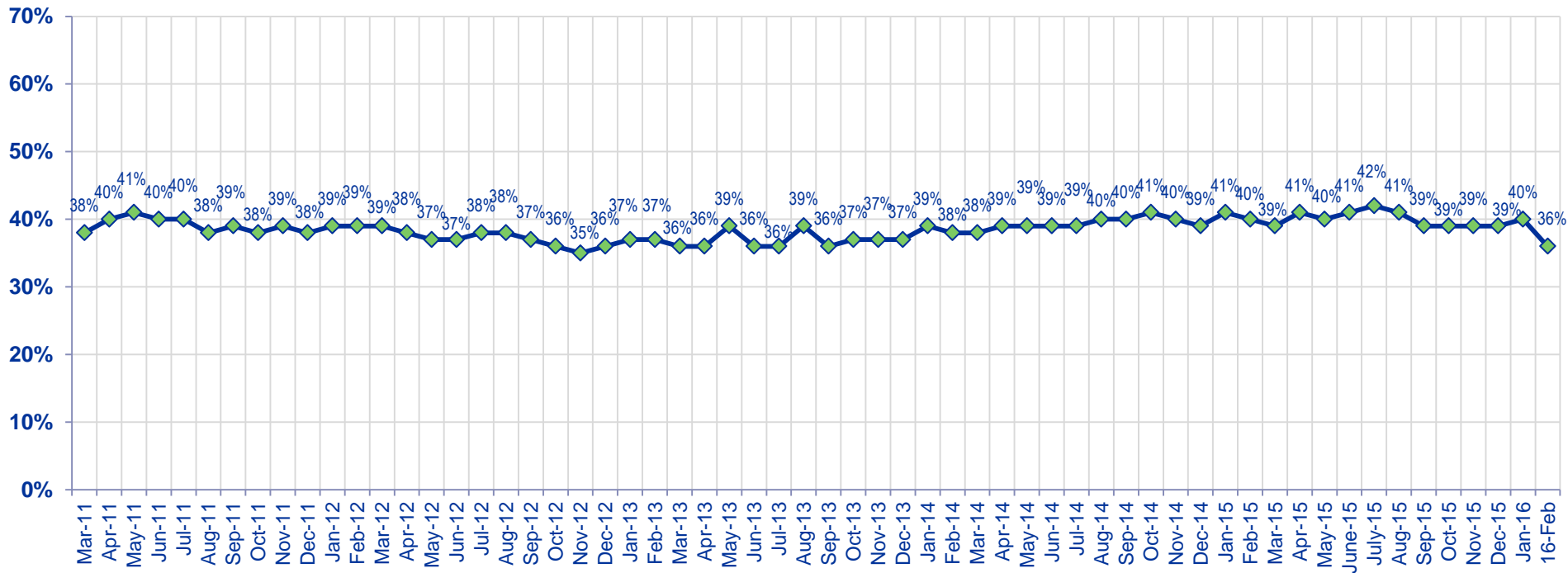


Global Citizens Assess the Current Economic Situation in their Country as “Good”



Now thinking about our economic situation, how would you describe the current economic situation in [insert country]? Is it very good, somewhat good, somewhat bad or very bad?

Total Good



Now thinking about our economic situation, how would you describe the current economic situation in [insert country]?
Is it very good, somewhat good, somewhat bad or very bad?

For All Countries Tracked: Citizens Assess the Current Economic Situation in their Country as “Good”

Now thinking about our economic situation, how would you describe the current economic situation in [insert country]?
Is it very good, somewhat good, somewhat bad or very bad?

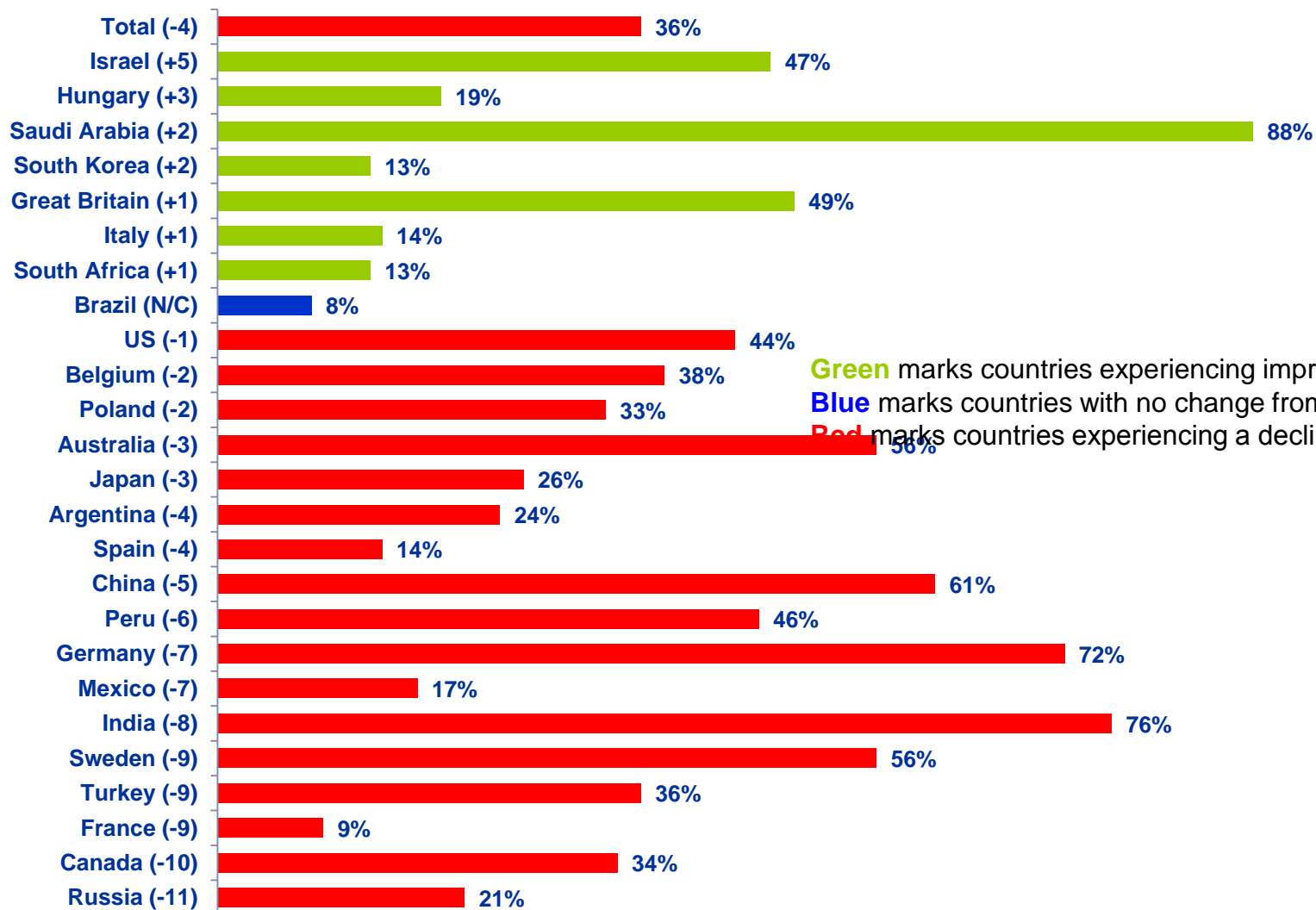
	Jan '13	Feb '13	Mar '13	Apr '13	May '13	Jun '13	Jul '13	Aug '13	Sep '13	Oct '13	Nov '13	Dec '13	Jan '14	Feb '14	Mar '14	Apr '14	May '14	Jun '14	Jul '14	Aug '14	Sep '14	Oct '14	Nov '14	Dec '14	Jan '15	Feb '15	Mar '15	Apr '15	May '15	June '15	July '15	Aug '15	Sep '15	Oct '15	Nov '15	Dec '15	Jan '16	Feb '16
Total	37%	37%	36%	36%	39%	36%	36%	39%	36%	37%	37%	37%	39%	38%	38%	39%	39%	39%	39%	40%	40%	41%	40%	39%	41%	40%	39%	41%	40%	41%	42%	41%	39%	39%	39%	39%	40%	36%
Argentina	40%	37%	30%	31%	25%	26%	28%	27%	31%	31%	26%	26%	28%	21%	18%	17%	18%	24%	21%	24%	19%	21%	19%	20%	21%	24%	25%	29%	28%	28%	29%	24%	28%	29%	29%	27%	28%	24%
Australia	59%	59%	57%	62%	54%	57%	57%	56%	62%	64%	63%	58%	59%	57%	54%	60%	53%	52%	56%	57%	58%	65%	63%	57%	58%	56%	51%	54%	56%	56%	57%	56%	54%	53%	55%	57%	59%	56%
Belgium	27%	25%	25%	29%	27%	27%	37%	38%	36%	34%	31%	30%	40%	37%	37%	40%	42%	39%	41%	40%	37%	35%	33%	31%	33%	39%	41%	35%	38%	44%	46%	45%	42%	35%	43%	35%	40%	38%
Brazil	52%	47%	48%	42%	42%	35%	26%	28%	30%	35%	34%	35%	37%	26%	24%	26%	20%	31%	24%	25%	26%	32%	23%	22%	17%	12%	11%	11%	14%	9%	12%	10%	6%	8%	8%	4%	8%	8%
Canada	66%	65%	65%	59%	63%	66%	65%	66%	64%	66%	68%	63%	62%	63%	66%	64%	65%	63%	70%	68%	65%	65%	67%	66%	63%	59%	61%	57%	63%	60%	65%	47%	45%	51%	52%	51%	44%	34%
China	68%	69%	72%	64%	66%	59%	66%	62%	61%	65%	61%	72%	63%	69%	69%	68%	66%	65%	69%	73%	74%	70%	78%	71%	80%	71%	75%	79%	76%	75%	72%	70%	68%	69%	72%	74%	66%	61%
France	5%	7%	6%	5%	3%	5%	6%	9%	8%	10%	5%	6%	8%	8%	10%	9%	9%	7%	8%	6%	5%	7%	6%	7%	7%	10%	9%	11%	11%	12%	11%	11%	10%	14%	12%	13%	18%	9%
Germany	65%	64%	64%	67%	62%	66%	69%	67%	69%	68%	73%	73%	75%	74%	76%	75%	75%	76%	77%	75%	79%	75%	74%	75%	81%	76%	79%	74%	76%	75%	78%	79%	77%	73%	71%	74%	79%	72%
Great Britain	13%	16%	12%	13%	21%	19%	23%	24%	24%	29%	26%	27%	28%	36%	36%	37%	43%	39%	41%	45%	42%	41%	45%	39%	46%	44%	48%	51%	51%	55%	49%	48%	53%	48%	45%	45%	48%	49%
Hungary	8%	6%	6%	7%	13%	10%	12%	11%	14%	10%	12%	17%	17%	14%	17%	24%	18%	17%	20%	18%	16%	23%	13%	15%	16%	16%	13%	19%	15%	17%	18%	19%	16%	20%	19%	23%	16%	19%
India	60%	65%	63%	66%	62%	60%	53%	54%	40%	51%	52%	56%	58%	61%	58%	60%	66%	75%	65%	72%	80%	80%	81%	81%	80%	80%	80%	82%	78%	83%	82%	79%	79%	82%	76%	79%	84%	76%
Israel																										36%	34%	46%	47%	48%	51%	53%	52%	44%	42%	46%	42%	47%
Italy	5%	4%	4%	4%	4%	6%	5%	8%	6%	5%	6%	6%	5%	7%	6%	10%	9%	7%	9%	8%	7%	8%	8%	7%	8%	8%	9%	10%	9%	11%	10%	12%	14%	13%	13%	16%	13%	14%
Japan	9%	16%	17%	20%	27%	18%	21%	21%	24%	21%	24%	25%	27%	29%	25%	26%	26%	29%	28%	27%	22%	20%	19%	19%	23%	26%	31%	31%	31%	30%	36%	30%	27%	29%	26%	27%	29%	26%
Mexico	38%	32%	31%	29%	31%	31%	28%	30%	23%	22%	22%	21%	20%	23%	24%	19%	20%	25%	26%	24%	22%	29%	23%	20%	19%	22%	16%	30%	16%	28%	33%	20%	21%	23%	27%	24%	24%	17%
Peru																																				52%	52%	46%
Poland	17%	19%	15%	19%	16%	16%	20%	23%	20%	22%	24%	22%	24%	25%	22%	25%	31%	25%	26%	26%	28%	31%	35%	33%	28%	27%	29%	30%	29%	33%	29%	35%	35%	36%	30%	36%	35%	33%
Russia	24%	31%	27%	33%	30%	31%	34%	30%	31%	27%	29%	28%	28%	32%	39%	50%	58%	47%	50%	59%	53%	47%	41%	36%	26%	28%	32%	33%	43%	36%	37%	38%	34%	30%	29%	36%	32%	21%
Saudi Arabia	86%	85%	80%	80%	81%	85%	84%	82%	87%	85%	80%	82%	86%	85%	86%	89%	87%	85%	87%	85%	84%	87%	85%	84%	87%	94%	92%	93%	90%	91%	91%	90%	87%	90%	91%	90%	86%	88%
South Africa	33%	20%	19%	23%	31%	19%	20%	25%	21%	27%	27%	27%	24%	17%	21%	18%	28%	23%	21%	24%	26%	22%	26%	23%	26%	27%	18%	25%	17%	20%	17%	21%	16%	19%	18%	12%	12%	13%
South Korea	16%	21%	20%	14%	17%	18%	17%	20%	20%	19%	21%	17%	17%	23%	16%	23%	19%	17%	15%	17%	16%	14%	11%	12%	13%	13%	13%	14%	16%	15%	14%	14%	14%	18%	12%	13%	11%	13%
Spain	3%	4%	5%	3%	4%	4%	4%	5%	6%	4%	5%	6%	7%	8%	6%	10%	10%	8%	9%	11%	10%	7%	10%	9%	11%	12%	13%	12%	16%	13%	16%	20%	19%	17%	17%	18%	14%	
Sweden	73%	69%	73%	70%	72%	71%	76%	70%	71%	67%	77%	60%	72%	69%	80%	66%	64%	75%	73%	70%	77%	67%	67%	74%	72%	73%	69%	66%	65%	66%	66%	70%	65%	72%	63%	58%	65%	56%
Turkey	48%	51%	53%	55%	48%	50%	47%	46%	46%	50%	48%	45%	43%	39%	40%	44%	45%	45%	44%	49%	47%	43%	46%	39%	45%	43%	39%	36%	38%	32%	38%	39%	28%	29%	42%	40%	45%	36%
United States	29%	32%	31%	31%	33%	31%	33%	34%	33%	23%	30%	35%	35%	31%	31%	36%	37%	38%	33%	35%	36%	42%	41%	44%	51%	47%	47%	48%	47%	44%	43%	48%	42%	43%	44%	45%	45%	44%

Countries Ranked and Marked By Change In Assessment From Last Month

(Left Column)

Thinking about our economic situation, how would you describe the current economic situation in [insert country]? Is it very good, somewhat good, somewhat bad or very bad?

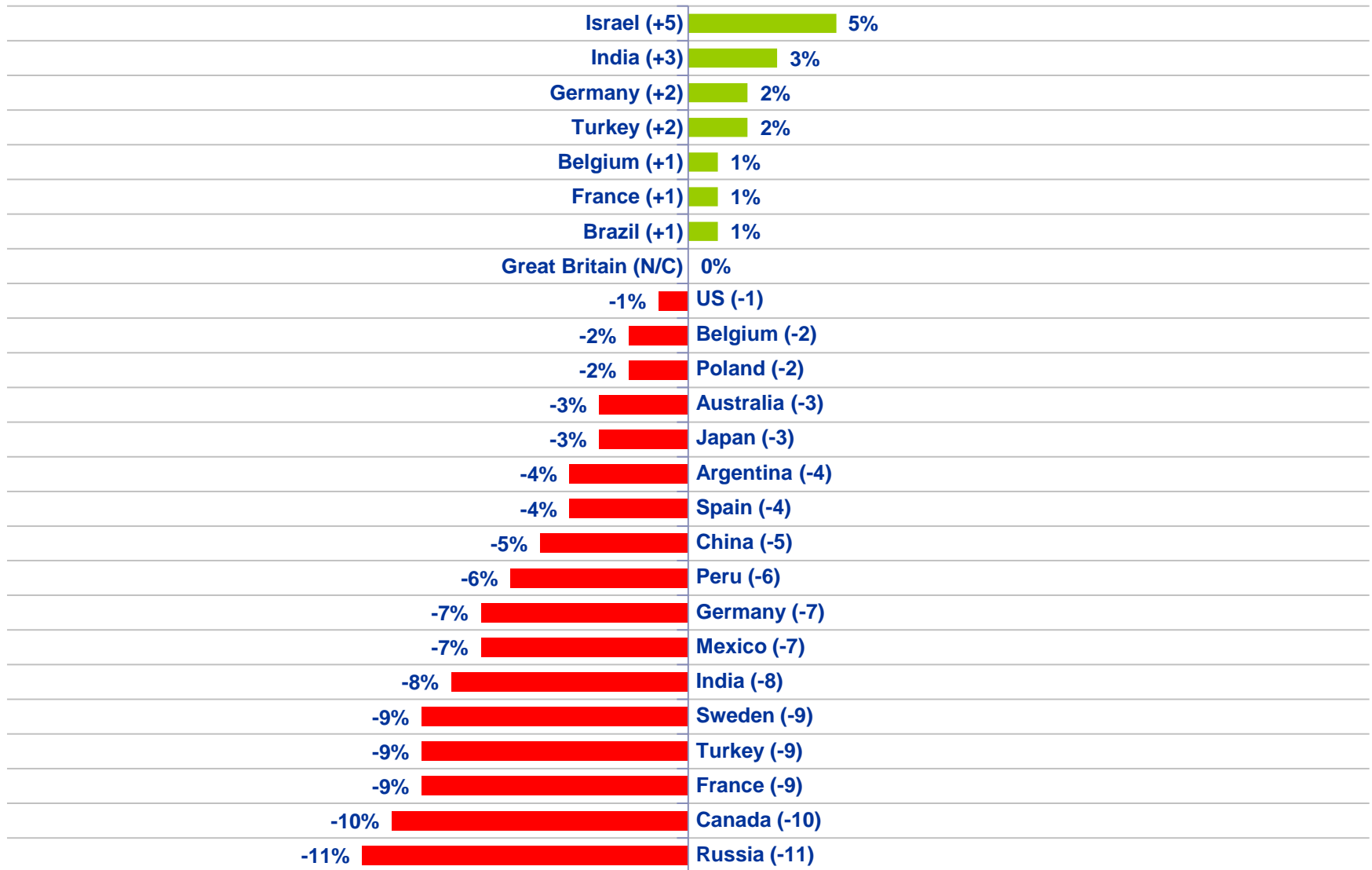
% Very Good / Somewhat Good



Green marks countries experiencing improvement;
Blue marks countries with no change from last month;
Red marks countries experiencing a decline...

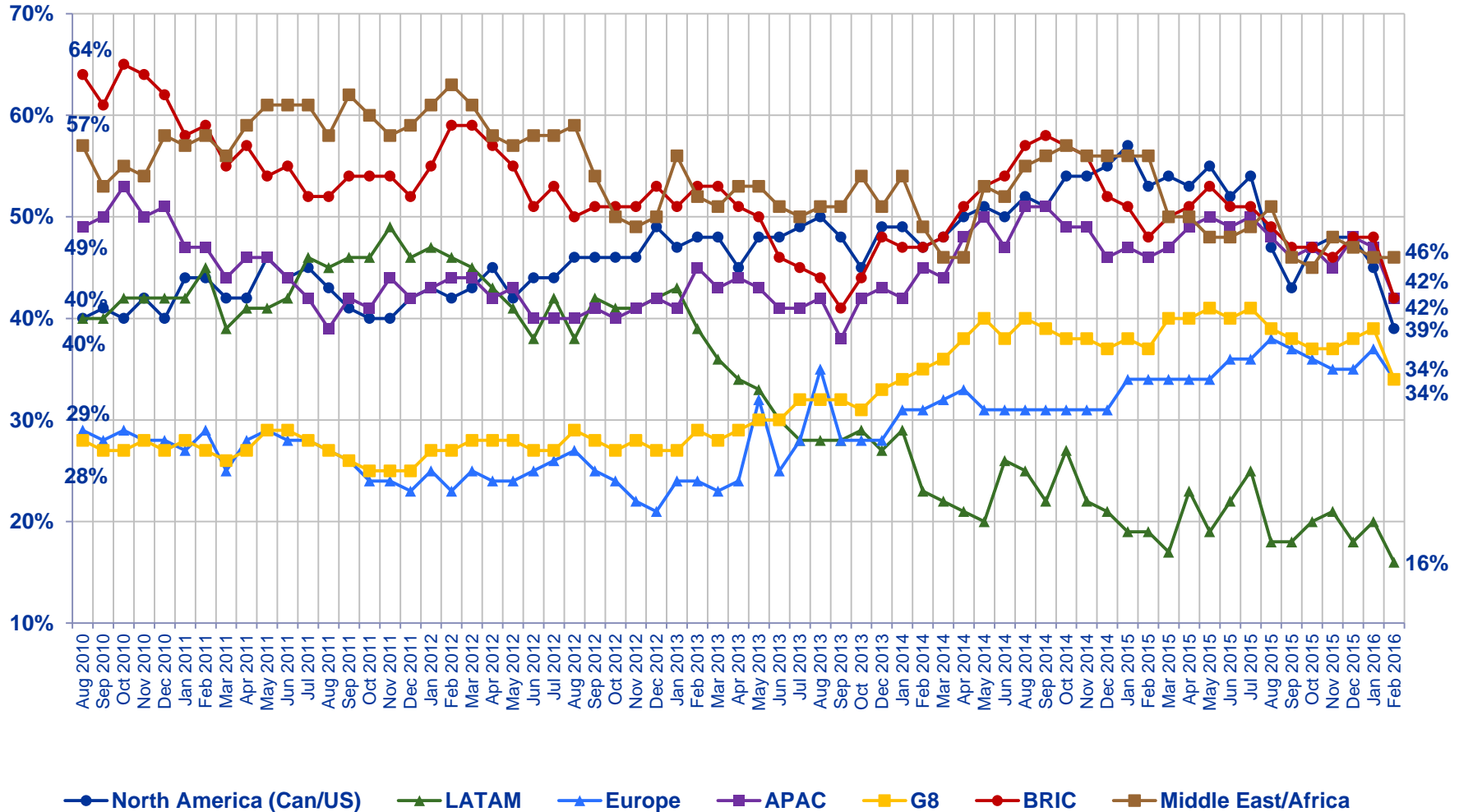
Countries Ranked by Net Improvement, Decline or No Change Compared to

Last Month: Thinking about our economic situation, how would you describe the current economic situation in [insert country]?
Is it very good, somewhat good, somewhat bad or very bad?



Assessing the Current Economic Situation by All Regions:

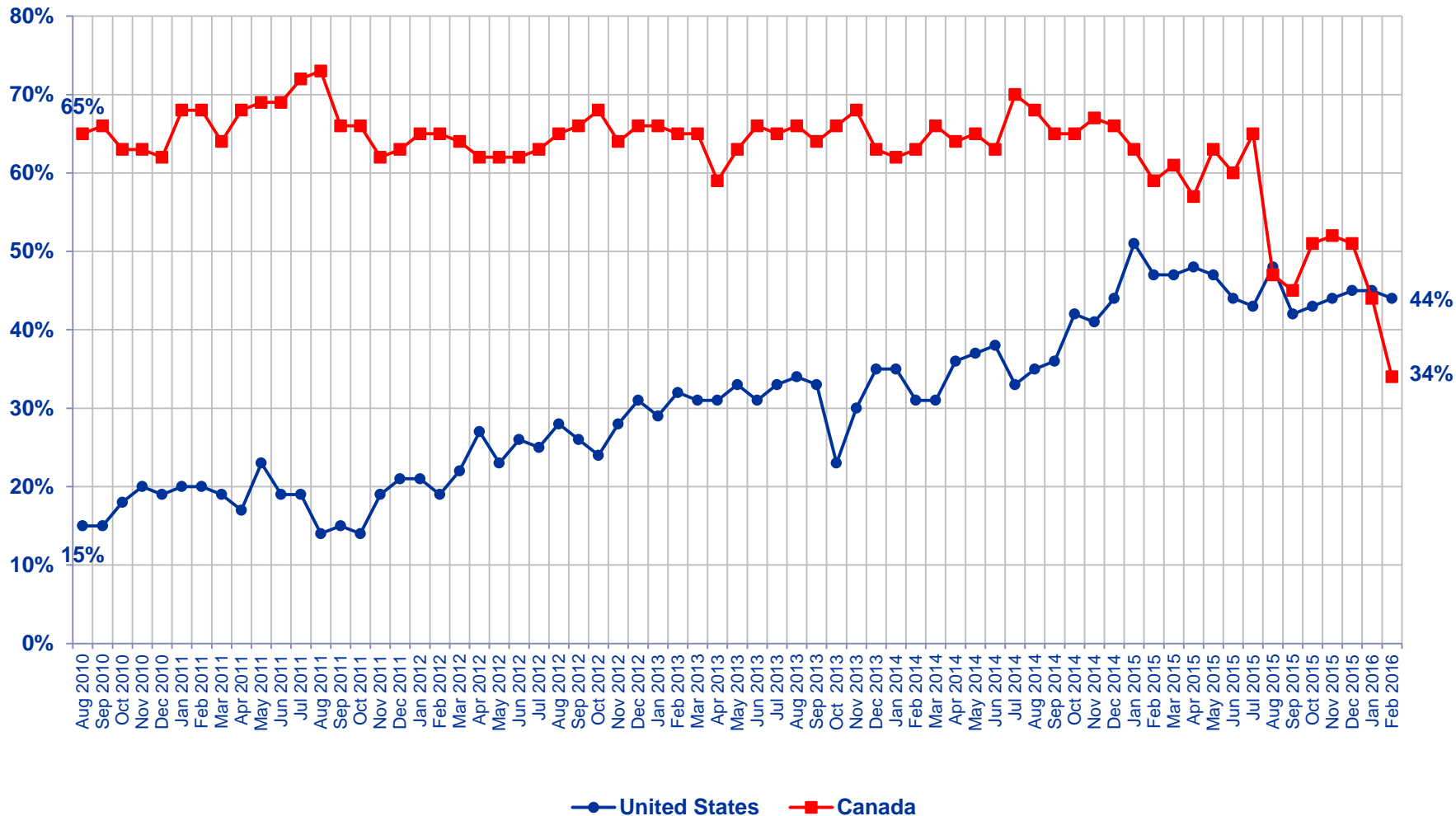
Very Good / Somewhat Good



Now thinking about our economic situation, how would you describe the current economic situation in [insert country]?

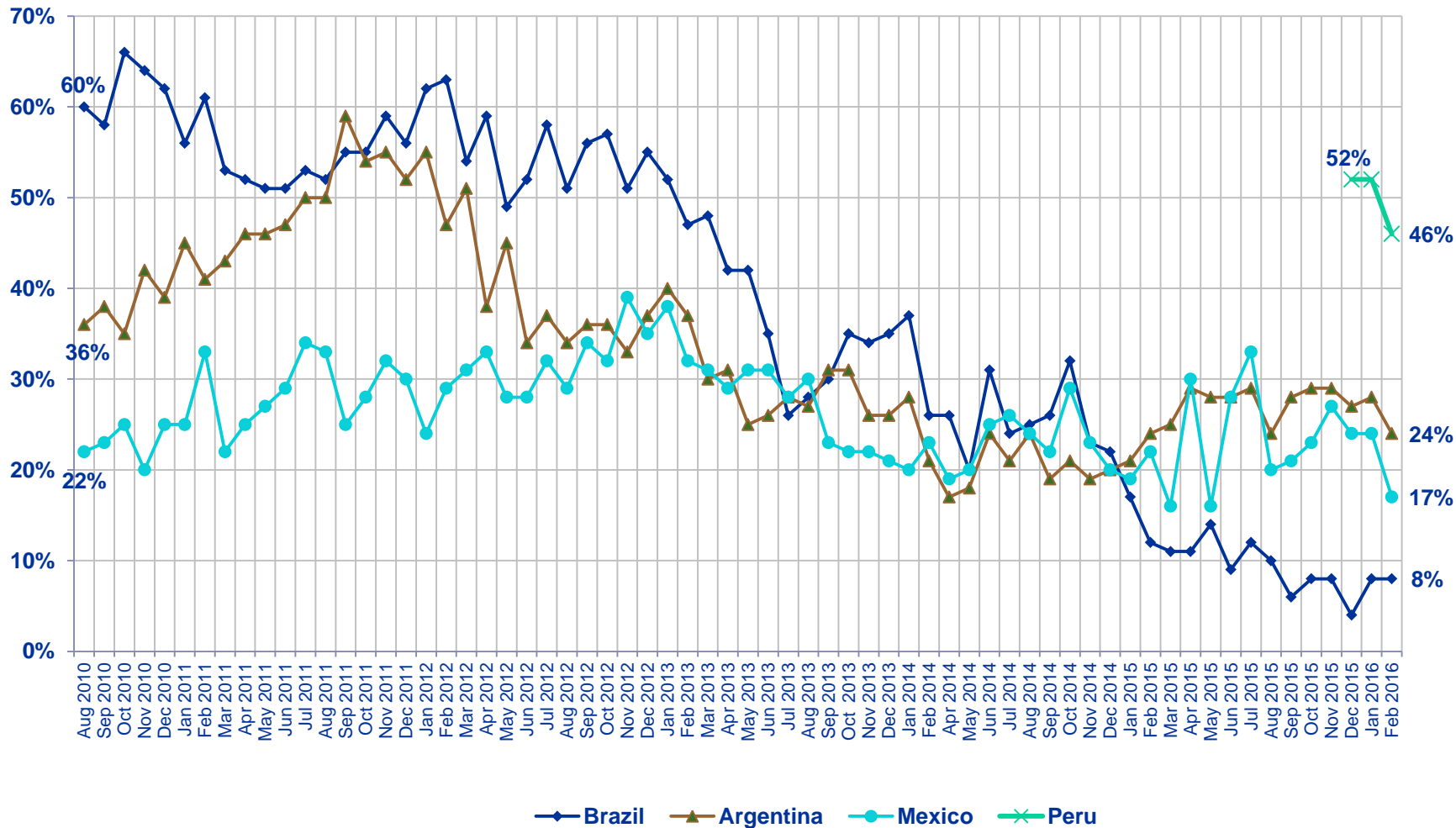
Is it very good, somewhat good, somewhat bad or very bad?

Very Good / Somewhat Good



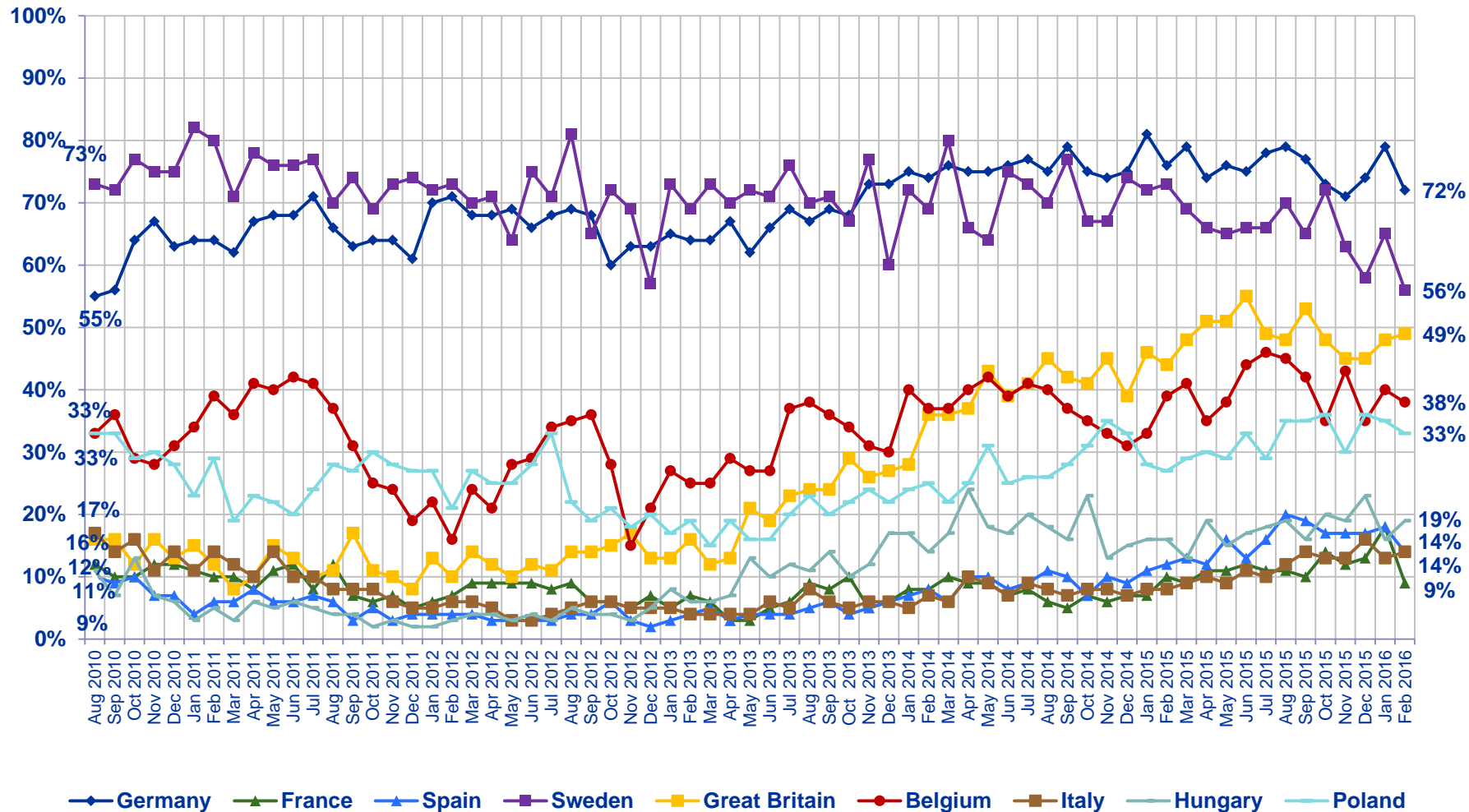
Now thinking about our economic situation, how would you describe the current economic situation in [insert country]?
Is it very good, somewhat good, somewhat bad or very bad?

Very Good / Somewhat Good



Now thinking about our economic situation, how would you describe the current economic situation in [insert country]?
Is it very good, somewhat good, somewhat bad or very bad?

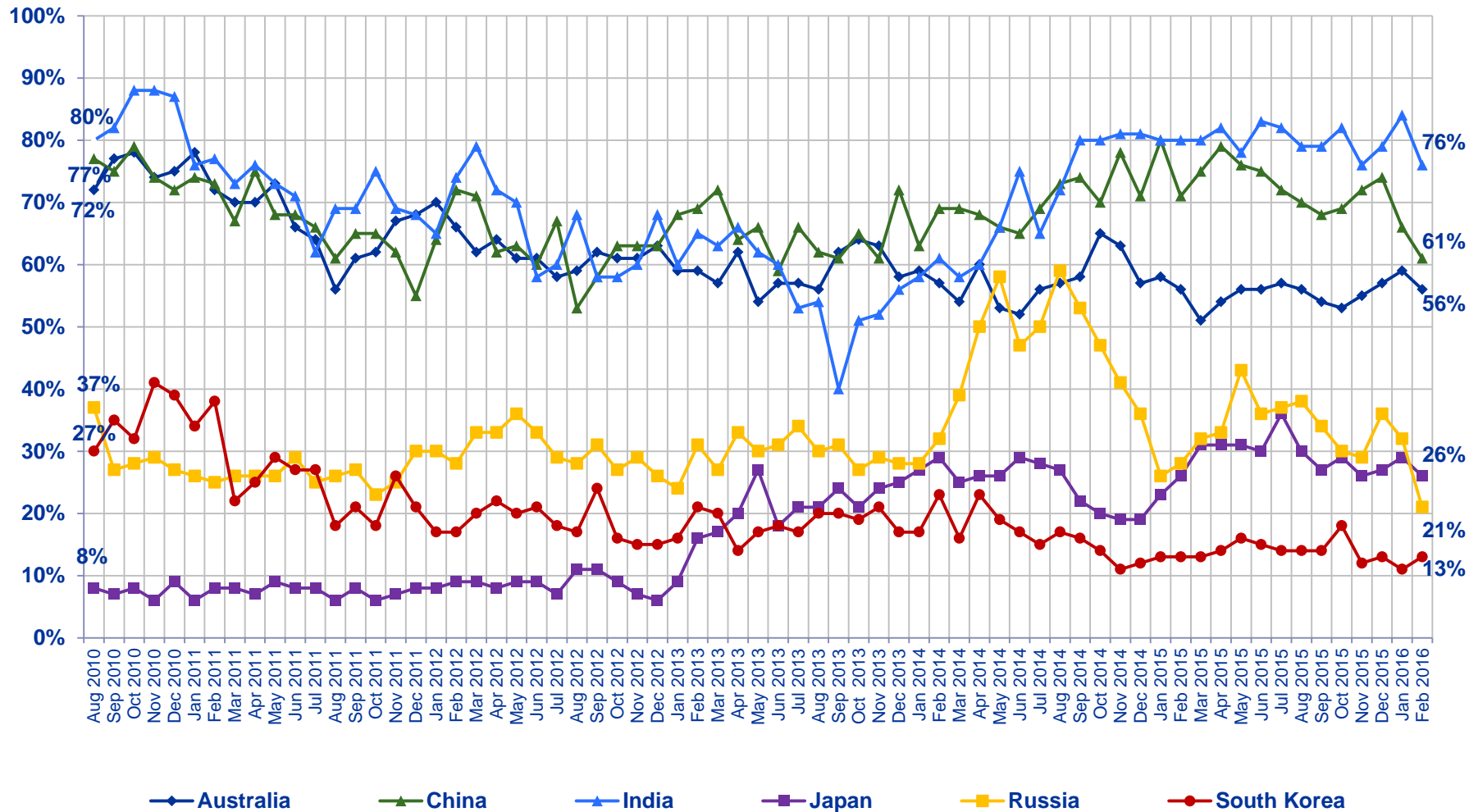
Very Good / Somewhat Good



Now thinking about our economic situation, how would you describe the current economic situation in [insert country]?

Is it very good, somewhat good, somewhat bad or very bad?

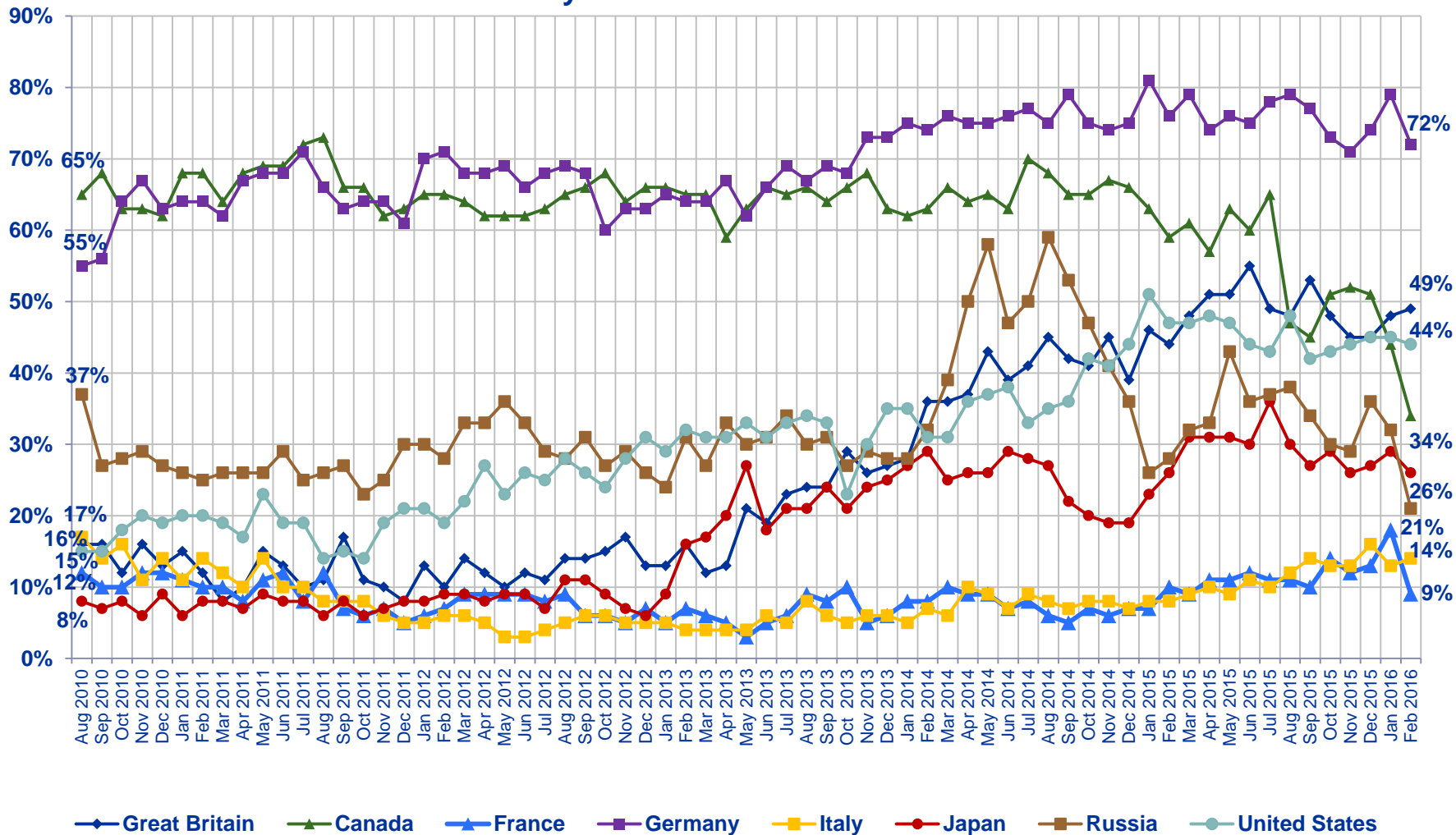
Very Good / Somewhat Good



Now thinking about our economic situation, how would you describe the current economic situation in [insert country]?

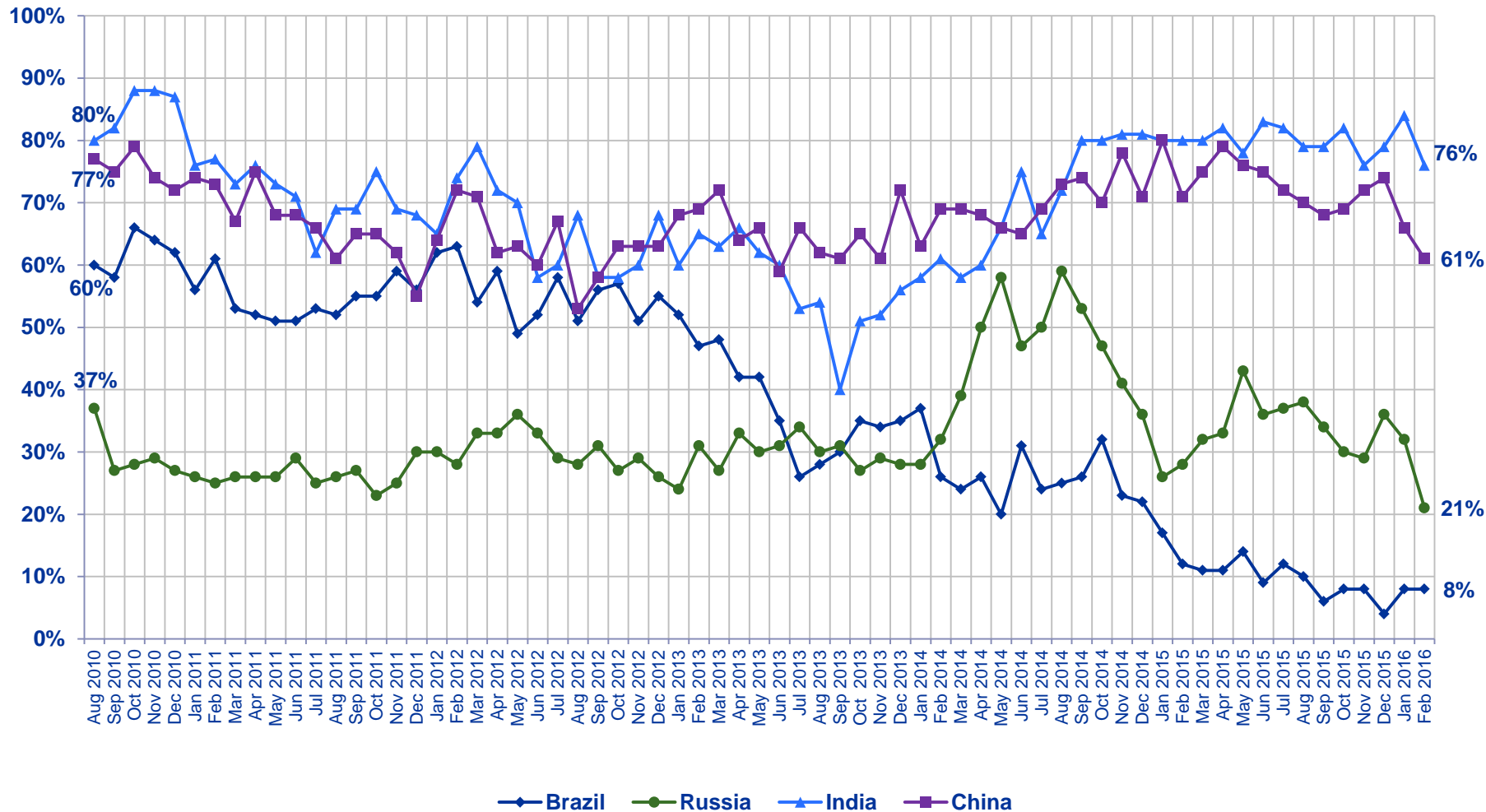
Is it very good, somewhat good, somewhat bad or very bad?

Very Good / Somewhat Good



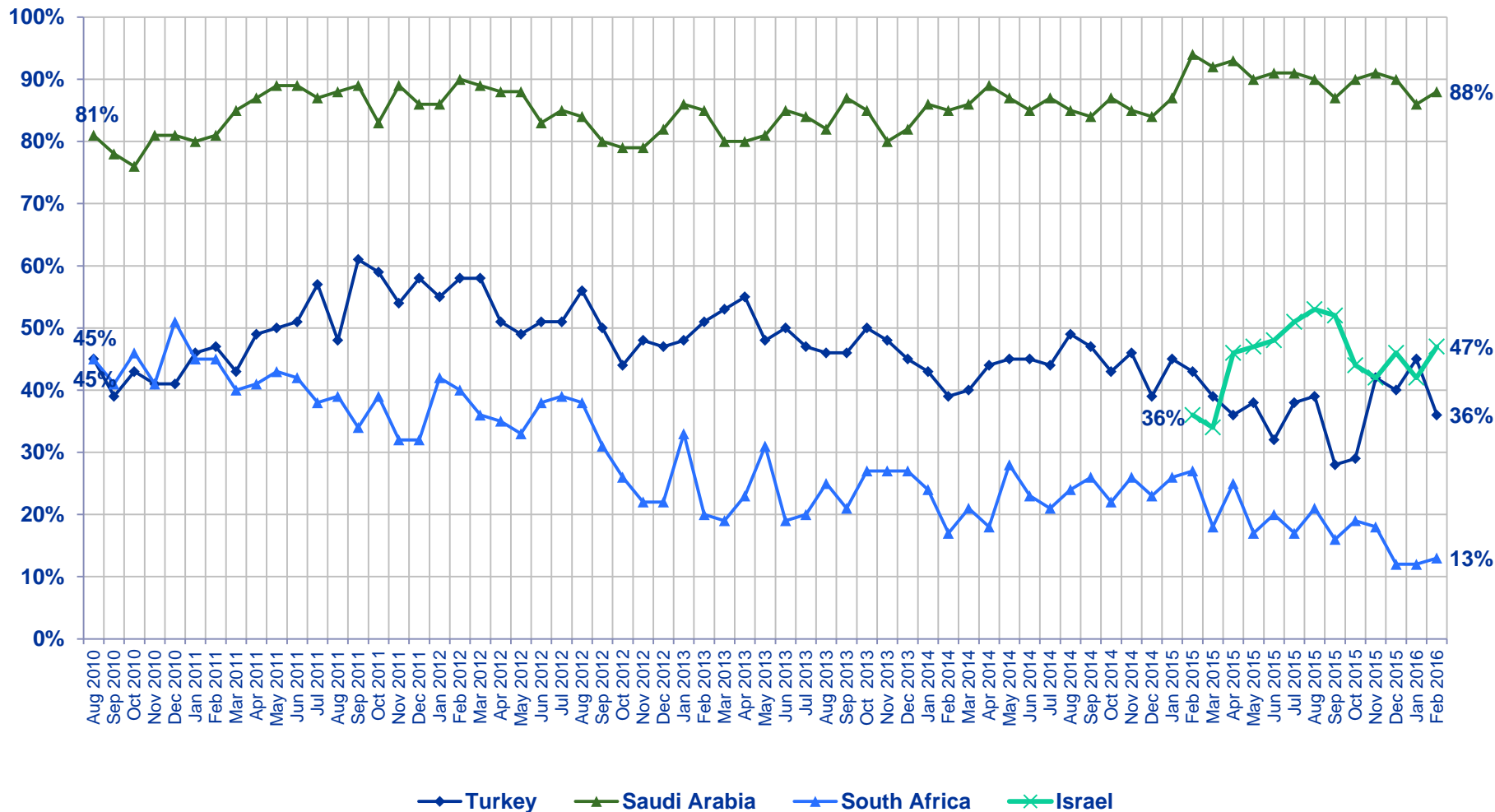
Now thinking about our economic situation, how would you describe the current economic situation in [insert country]?
Is it very good, somewhat good, somewhat bad or very bad?

Very Good / Somewhat Good



Now thinking about our economic situation, how would you describe the current economic situation in [insert country]?
Is it very good, somewhat good, somewhat bad or very bad?

Very Good / Somewhat Good



Now thinking about our economic situation, how would you describe the current economic situation in [insert country]?
Is it very good, somewhat good, somewhat bad or very bad?

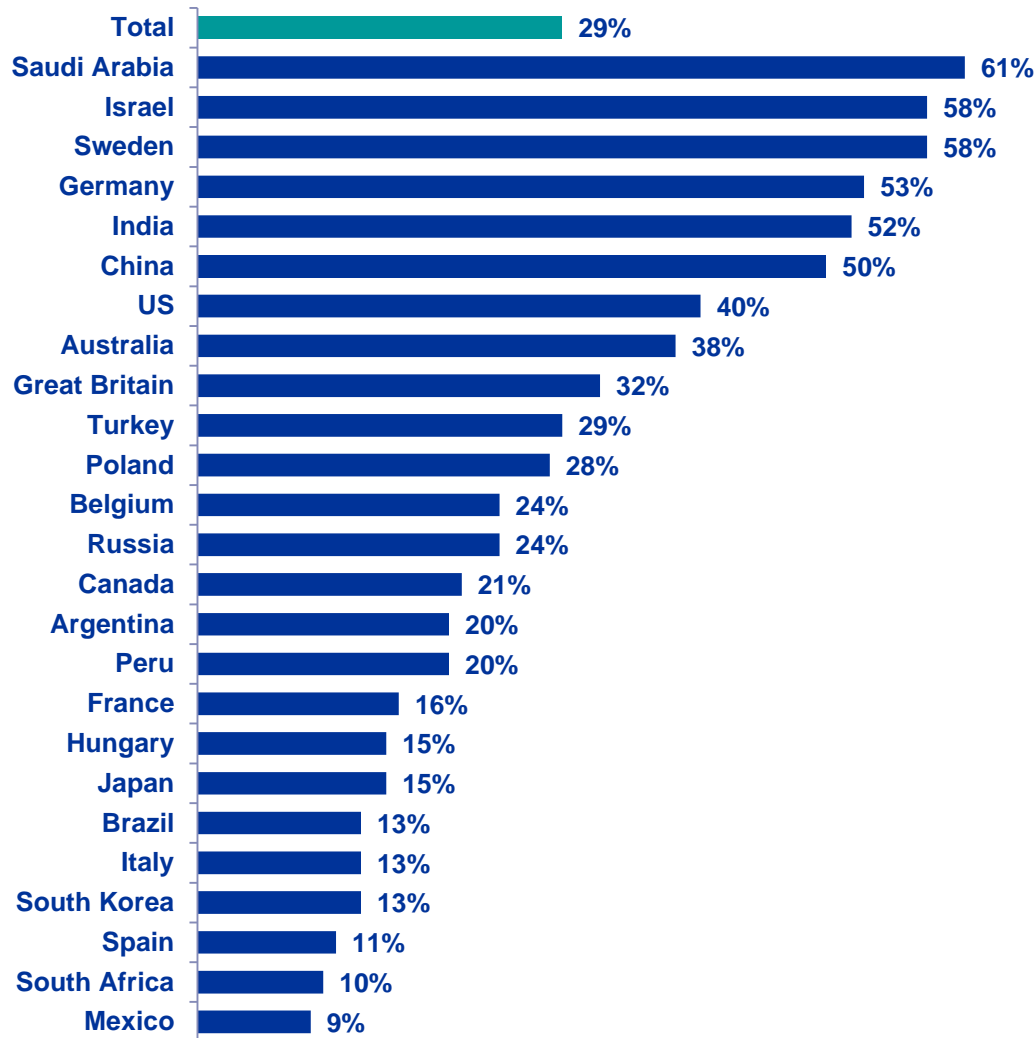
② Assessing The Economy...

...In Their Local Area



Citizen Consumers Who Say The Economy In Their Local Area is Strong...

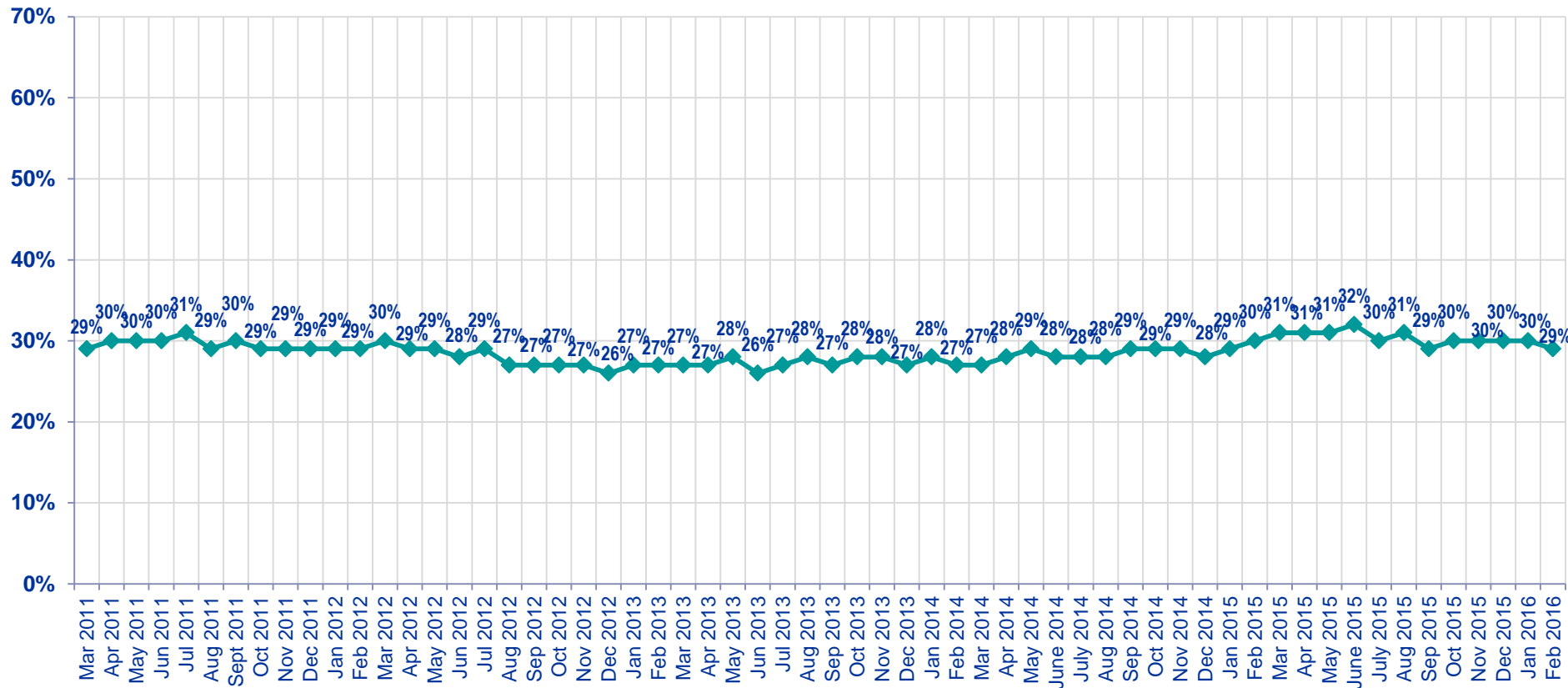
% Strong (Top 3: 5-6-7)



Rate the current state of the economy in your local area using a scale from 1 to 7, where 7 means a very strong economy today and 1 means a very weak economy

Citizen Consumers Who Say The Economy In Their Local Area is Strong

Total - % Strong (Top 3: 5-6-7)



Rate the current state of the economy in your local area using a scale from 1 to 7, where 7 means a very strong economy today and 1 means a very weak economy.

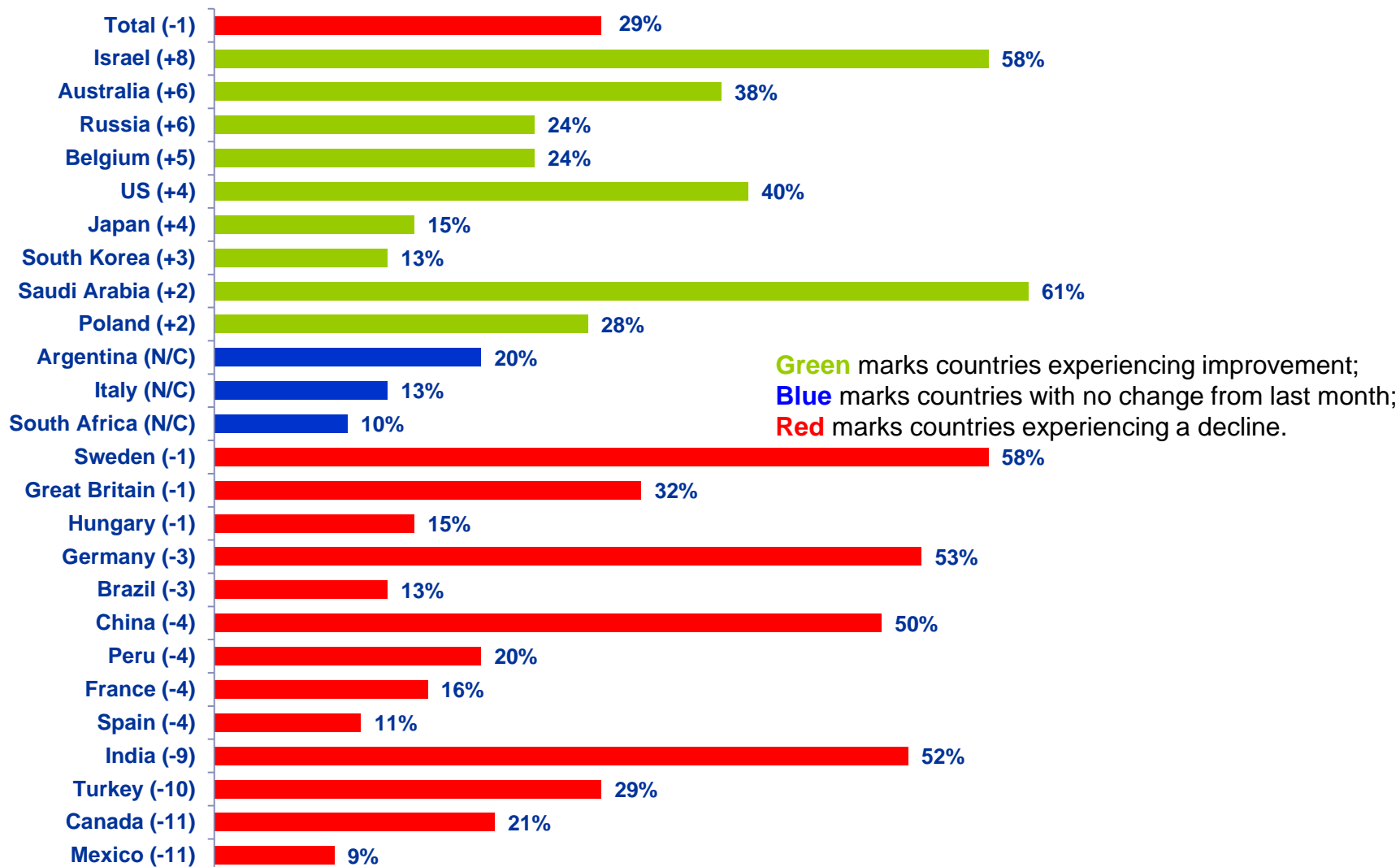
Citizen Consumers Who Say The Economy In Their Local Area is Strong

% Strong (Top 3 5-6-7)

	Jan '13	Feb '13	Mar '13	Apr '13	May '13	Jun '13	Jul '13	Aug '13	Sep '13	Oct '13	Nov '13	Dec '13	Jan '14	Feb '14	Mar '14	Apr '14	May '14	Jun '14	Jul '14	Aug '14	Sep '14	Oct '14	Nov '14	Dec '14	Jan '15	Feb '15	Mar '15	Apr '15	May '15	June '15	July '15	Aug '15	Sep '15	Oct '15	Nov '15	Dec '15	Jan '16	Feb '16
Total	27%	27%	27%	27%	28%	26%	27%	28%	27%	28%	28%	27%	28%	27%	27%	28%	29%	28%	28%	28%	29%	29%	29%	28%	29%	30%	31%	31%	31%	32%	30%	31%	29%	30%	30%	30%	30%	29%
Argentina	23%	22%	23%	22%	24%	20%	22%	20%	24%	26%	24%	22%	20%	20%	17%	13%	15%	23%	18%	17%	15%	20%	21%	17%	17%	19%	22%	22%	21%	19%	21%	20%	20%	22%	22%	18%	20%	20%
Australia	40%	40%	39%	42%	37%	38%	39%	37%	38%	39%	40%	36%	38%	39%	36%	40%	36%	35%	37%	39%	41%	42%	40%	38%	37%	35%	35%	34%	32%	34%	34%	35%	35%	33%	36%	42%	32%	38%
Belgium	17%	14%	15%	15%	14%	19%	22%	22%	22%	20%	20%	20%	23%	21%	19%	24%	25%	22%	24%	24%	20%	21%	22%	14%	20%	23%	23%	20%	21%	25%	26%	26%	24%	22%	26%	19%	19%	24%
Brazil	38%	39%	38%	36%	35%	28%	28%	31%	31%	32%	33%	33%	30%	23%	22%	31%	22%	30%	28%	25%	30%	30%	29%	26%	25%	22%	20%	18%	17%	14%	14%	16%	12%	14%	18%	14%	16%	13%
Canada	47%	46%	47%	41%	41%	47%	45%	44%	44%	45%	47%	44%	42%	41%	44%	40%	42%	42%	49%	47%	46%	48%	47%	41%	41%	40%	37%	35%	40%	40%	40%	32%	35%	31%	34%	33%	32%	21%
China	51%	50%	56%	48%	48%	43%	48%	47%	46%	49%	49%	53%	45%	52%	51%	52%	48%	47%	53%	53%	56%	51%	63%	60%	66%	53%	56%	63%	60%	60%	58%	53%	49%	54%	57%	58%	54%	50%
France	13%	12%	12%	12%	6%	10%	12%	11%	11%	12%	10%	12%	12%	12%	12%	13%	13%	12%	11%	10%	12%	11%	12%	10%	12%	15%	11%	12%	14%	11%	13%	12%	12%	15%	15%	17%	20%	16%
Germany	48%	45%	47%	47%	43%	43%	48%	43%	50%	45%	50%	51%	51%	51%	54%	52%	55%	55%	53%	52%	57%	47%	52%	55%	56%	53%	55%	53%	53%	55%	54%	58%	56%	52%	51%	49%	56%	53%
Great Britain	14%	15%	14%	14%	15%	20%	20%	21%	17%	21%	22%	20%	21%	25%	26%	25%	28%	26%	29%	30%	29%	31%	33%	28%	33%	32%	38%	38%	41%	42%	34%	35%	36%	33%	29%	29%	33%	32%
Hungary	6%	7%	8%	9%	9%	10%	12%	11%	10%	10%	9%	12%	15%	12%	13%	13%	13%	12%	13%	13%	12%	15%	14%	13%	12%	12%	13%	14%	14%	15%	13%	16%	13%	14%	15%	15%	16%	15%
India	39%	39%	41%	36%	40%	38%	36%	34%	27%	32%	32%	36%	34%	37%	35%	38%	43%	47%	44%	47%	52%	53%	53%	51%	56%	50%	58%	53%	51%	56%	53%	52%	56%	53%	55%	50%	61%	52%
Israel																										51%	49%	51%	56%	57%	59%	56%	59%	56%	53%	59%	50%	58%
Italy	9%	9%	8%	6%	8%	8%	8%	8%	8%	7%	7%	6%	7%	9%	10%	11%	9%	9%	12%	8%	9%	11%	10%	8%	10%	11%	12%	11%	8%	12%	11%	11%	13%	13%	13%	14%	13%	13%
Japan	5%	7%	7%	9%	12%	8%	10%	11%	12%	10%	12%	13%	12%	16%	13%	14%	14%	15%	15%	13%	11%	11%	10%	10%	12%	15%	17%	17%	16%	16%	18%	16%	15%	16%	12%	13%	11%	15%
Mexico	21%	23%	23%	24%	20%	23%	18%	22%	18%	20%	20%	13%	20%	17%	19%	17%	16%	16%	21%	17%	16%	17%	18%	16%	17%	15%	14%	16%	15%	12%	22%	23%	10%	19%	24%	16%	20%	9%
Peru																																				25%	24%	20%
Poland	14%	15%	14%	16%	13%	16%	14%	14%	19%	16%	22%	18%	18%	16%	21%	19%	23%	21%	19%	21%	23%	22%	24%	23%	19%	17%	22%	20%	22%	21%	18%	24%	21%	29%	20%	27%	26%	28%
Russia	20%	22%	17%	19%	20%	20%	20%	17%	21%	17%	22%	18%	16%	22%	28%	31%	32%	25%	26%	33%	35%	30%	27%	26%	29%	22%	30%	27%	27%	32%	24%	29%	24%	25%	23%	24%	18%	24%
Saudi Arabia	59%	57%	55%	53%	57%	56%	58%	56%	57%	63%	56%	56%	58%	58%	57%	64%	67%	59%	58%	62%	60%	62%	61%	61%	56%	68%	73%	72%	67%	71%	62%	65%	60%	65%	62%	66%	59%	61%
South Africa	26%	20%	17%	21%	24%	20%	23%	20%	17%	20%	22%	25%	18%	17%	17%	15%	20%	16%	16%	22%	19%	18%	19%	15%	16%	18%	16%	16%	16%	17%	12%	19%	11%	16%	13%	12%	10%	10%
South Korea	14%	17%	15%	16%	17%	18%	13%	16%	20%	20%	18%	16%	17%	21%	14%	21%	16%	13%	16%	14%	14%	12%	13%	9%	12%	13%	10%	11%	15%	13%	13%	13%	14%	13%	12%	11%	10%	13%
Spain	5%	5%	6%	5%	7%	7%	6%	7%	8%	7%	7%	7%	6%	8%	6%	9%	11%	10%	10%	9%	9%	8%	9%	9%	10%	13%	13%	13%	12%	15%	12%	14%	15%	13%	15%	14%	15%	11%
Sweden	52%	51%	53%	49%	53%	48%	56%	53%	50%	54%	52%	49%	55%	51%	60%	49%	51%	53%	56%	51%	59%	48%	47%	53%	54%	59%	53%	51%	51%	62%	54%	53%	58%	60%	50%	53%	59%	58%
Turkey	35%	34%	37%	40%	36%	36%	38%	35%	35%	37%	38%	37%	31%	31%	30%	37%	35%	36%	33%	39%	33%	36%	35%	27%	30%	29%	38%	30%	29%	28%	27%	31%	23%	23%	33%	27%	39%	29%
United States	22%	28%	23%	27%	28%	28%	29%	29%	28%	25%	26%	27%	29%	25%	25%	28%	27%	28%	29%	30%	30%	33%	35%	34%	40%	38%	40%	39%	38%	37%	35%	38%	35%	37%	36%	36%	36%	40%

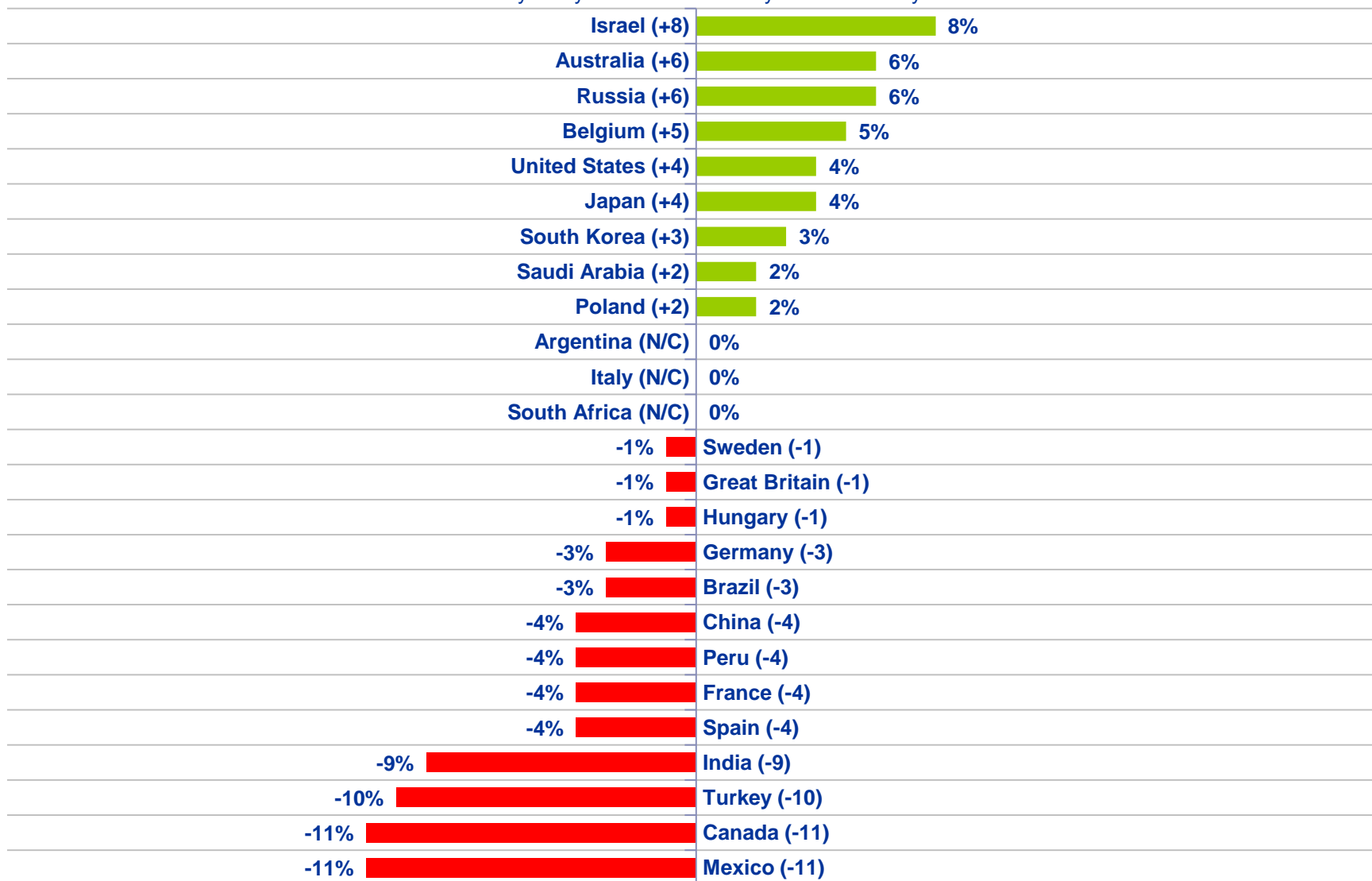
Countries Ranked and Marked By Change In Assessment From Last Month (Left Column):

Rate the current state of the economy in your local area using a scale from 1 to 7, where 7 means a very strong economy today and 1 means a very weak economy...



Countries Ranked by Net Improvement, Decline or No Change Compared to Last Month:

Rate the current state of the economy in your local area using a scale from 1 to 7, where 7 means a very strong economy today and 1 means a very weak economy...

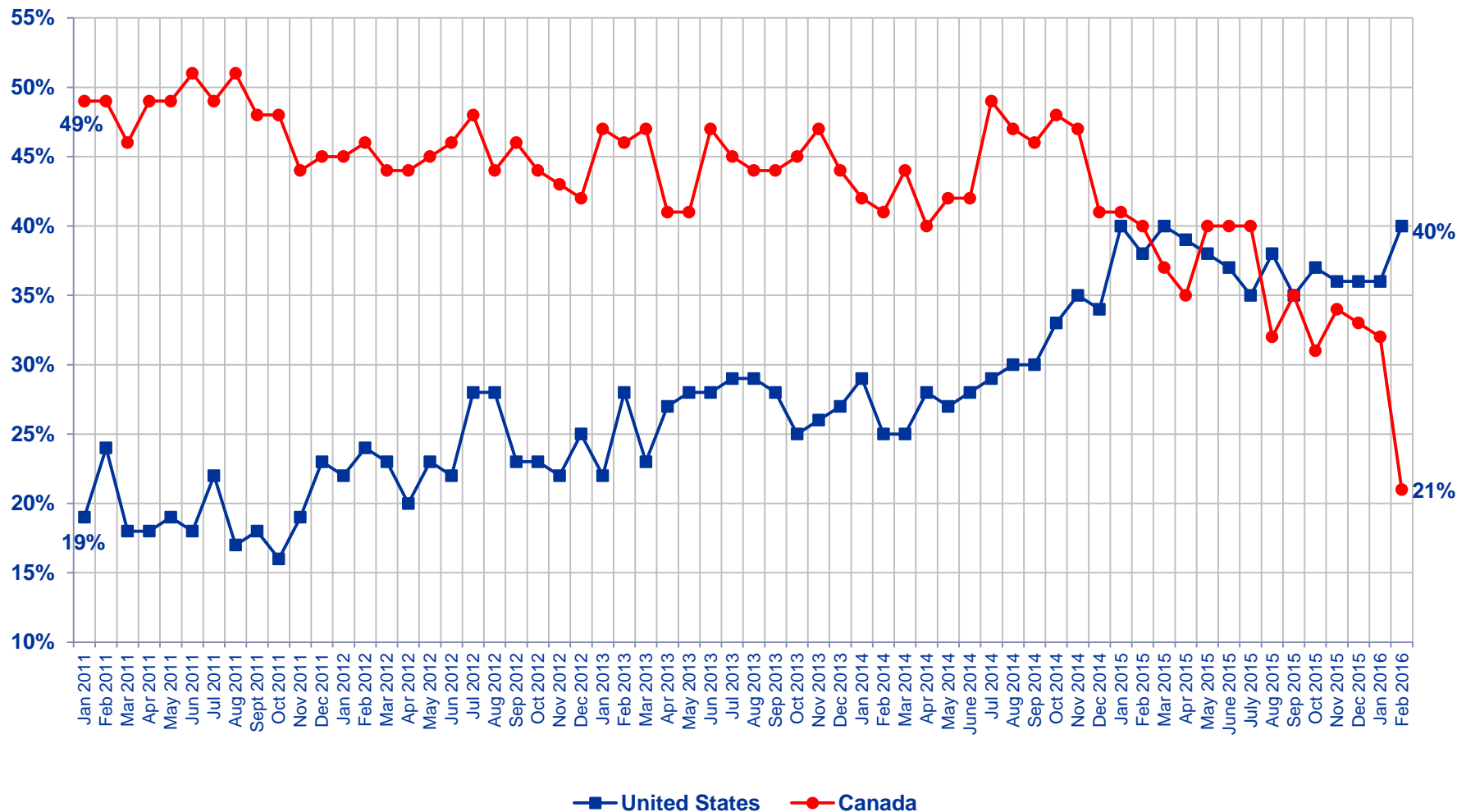


The chart displays the percentage of the world's population residing in seven major regions from January 2011 to February 2016. The regions are North America, LATAM, Europe, APAC, G-8 Countries, BRIC, and Middle East/Africa. The Y-axis represents the percentage of the global population, ranging from 10% to 55% in 5% increments. The X-axis shows the timeline in monthly intervals. The chart illustrates that while all regions show growth, the rate of increase varies significantly. APAC and BRIC show the most rapid growth, while Europe and LATAM show slower increases. The Middle East/Africa region shows a notable peak in late 2011 followed by a decline and then a gradual recovery.

Region	Jan 2011	Feb 2011	Mar 2011	Apr 2011	May 2011	Jun 2011	Jul 2011	Aug 2011	Sep 2011	Oct 2011	Nov 2011	Dec 2011	Jan 2012	Feb 2012	Mar 2012	Apr 2012	May 2012	Jun 2012	Jul 2012	Aug 2012	Sep 2012	Oct 2012	Nov 2012	Dec 2012	Jan 2013	Feb 2013	Mar 2013	Apr 2013	May 2013	Jun 2013	Jul 2013	Aug 2013	Sep 2013	Oct 2013	Nov 2013	Dec 2013	Jan 2014	Feb 2014	Mar 2014	Apr 2014	May 2014	Jun 2014	July 2014	Aug 2014	Sep 2014	Oct 2014	Nov 2014	Dec 2014	Jan 2015	Feb 2015	Mar 2015	Apr 2015	May 2015	June 2015	July 2015	Aug 2015	Sep 2015	Oct 2015	Nov 2015	Dec 2015	Jan 2016	Feb 2016									
North America	34%	37%	32%	33%	34%	35%	34%	33%	32%	33%	34%	35%	34%	33%	32%	33%	34%	35%	38%	35%	34%	33%	34%	35%	36%	37%	38%	39%	38%	37%	36%	35%	34%	33%	32%	31%	30%	29%	28%	27%	26%	25%	24%	23%	22%	21%	20%	19%	18%	17%	16%	15%	14%	13%	12%	11%	10%														
LATAM	31%	32%	28%	29%	30%	31%	32%	33%	34%	35%	36%	37%	38%	39%	40%	41%	42%	43%	44%	45%	46%	47%	48%	49%	50%	51%	52%	53%	54%	55%	56%	57%	58%	59%	60%	61%	62%	63%	64%	65%	66%	67%	68%	69%	70%	71%	72%	73%	74%	75%	76%	77%	78%	79%	80%	81%	82%	83%	84%	85%	86%	87%	88%	89%	90%						
Europe	22%	24%	21%	23%	24%	25%	26%	27%	28%	29%	30%	31%	32%	33%	34%	35%	36%	37%	38%	39%	40%	41%	42%	43%	44%	45%	46%	47%	48%	49%	50%	51%	52%	53%	54%	55%	56%	57%	58%	59%	60%	61%	62%	63%	64%	65%	66%	67%	68%	69%	70%	71%	72%	73%	74%	75%	76%	77%	78%	79%	80%	81%	82%	83%	84%	85%	86%	87%	88%	89%	90%
APAC	34%	33%	32%	31%	30%	29%	28%	27%	26%	25%	24%	23%	22%	21%	20%	19%	18%	17%	16%	15%	14%	13%	12%	11%	10%	9%	8%	7%	6%	5%	4%	3%	2%	1%	0%	-1%	-2%	-3%	-4%	-5%	-6%	-7%	-8%	-9%	-10%	-11%	-12%	-13%	-14%	-15%	-16%	-17%	-18%	-19%	-20%	-21%	-22%	-23%	-24%	-25%	-26%	-27%	-28%	-29%	-30%						
G-8 Countries	22%	23%	21%	24%	25%	26%	27%	28%	29%	30%	31%	32%	33%	34%	35%	36%	37%	38%	39%	40%	41%	42%	43%	44%	45%	46%	47%	48%	49%	50%	51%	52%	53%	54%	55%	56%	57%	58%	59%	60%	61%	62%	63%	64%	65%	66%	67%	68%	69%	70%	71%	72%	73%	74%	75%	76%	77%	78%	79%	80%	81%	82%	83%	84%	85%	86%	87%	88%	89%	90%	
BRIC	42%	44%	41%	43%	42%	40%	41%	42%	43%	44%	45%	46%	47%	48%	49%	50%	51%	52%	53%	54%	55%	56%	57%	58%	59%	60%	61%	62%	63%	64%	65%	66%	67%	68%	69%	70%	71%	72%	73%	74%	75%	76%	77%	78%	79%	80%	81%	82%	83%																						

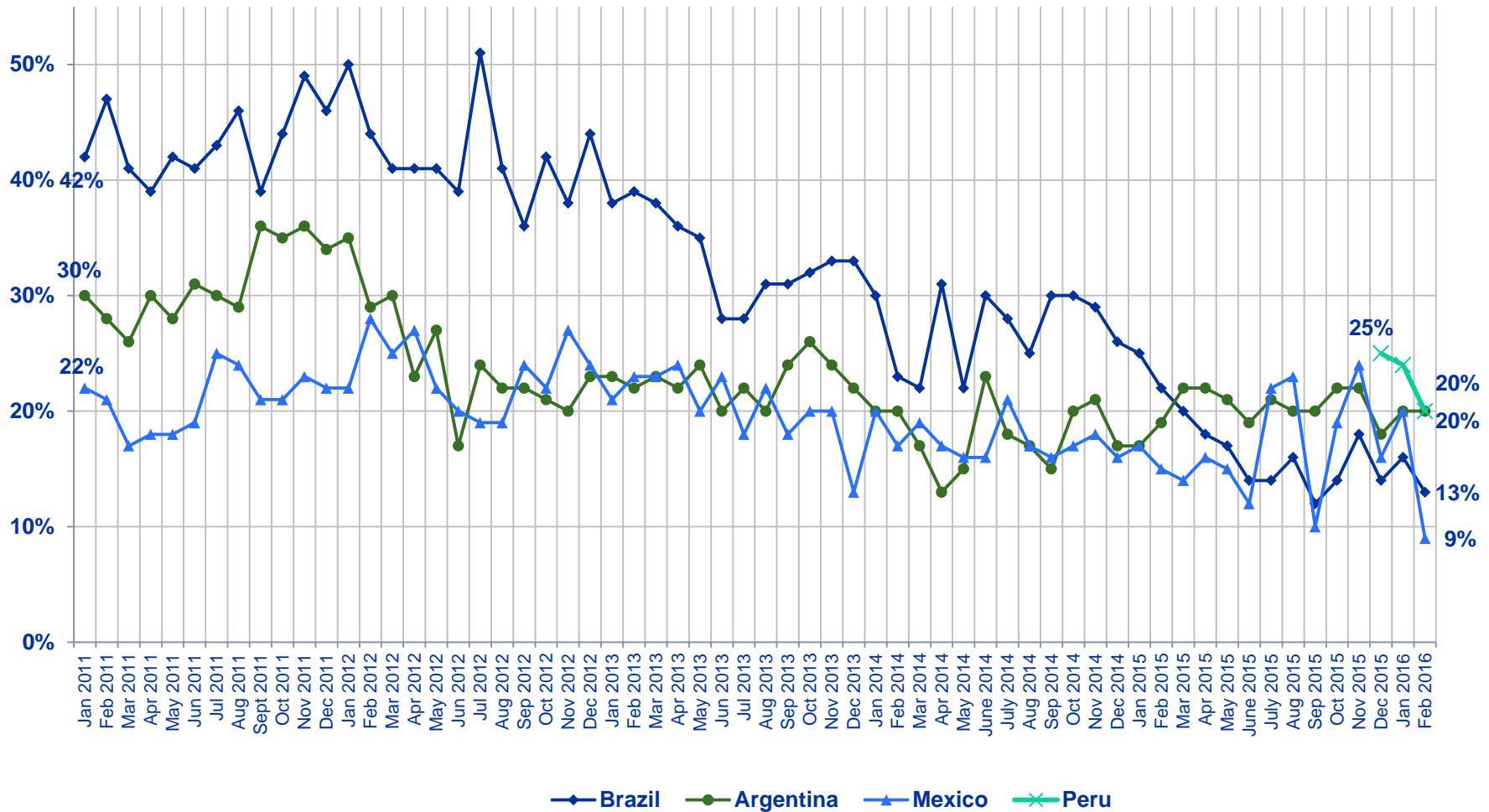
***A Global @dvisory* – February 2016– G@78**
The Economic Pulse

% Strong (Top 3 5-6-7)



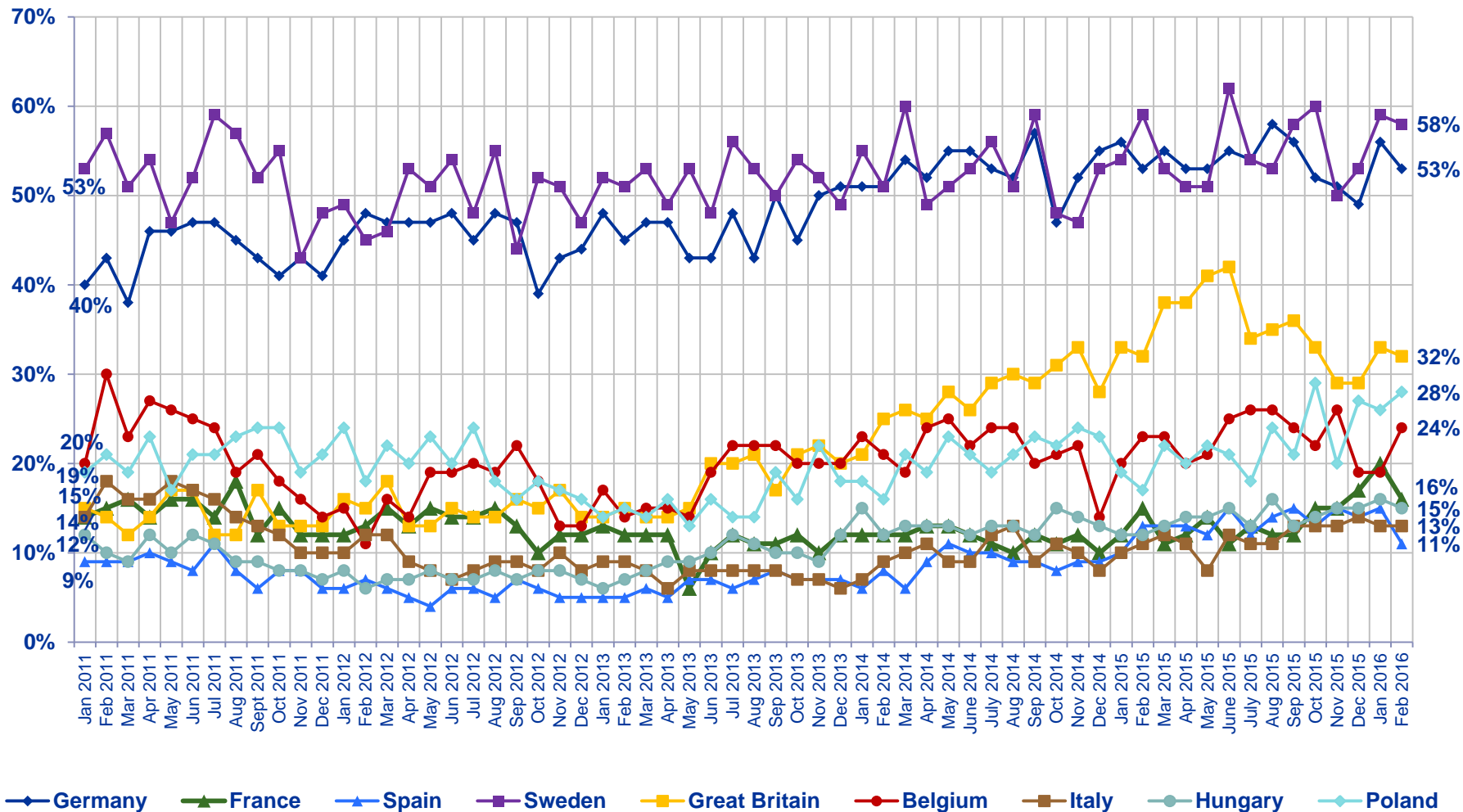
Rate the current state of the economy in your local area using a scale from 1 to 7, where 7 means a very strong economy today and 1 means a very weak economy.

% Strong (Top 3 5-6-7)

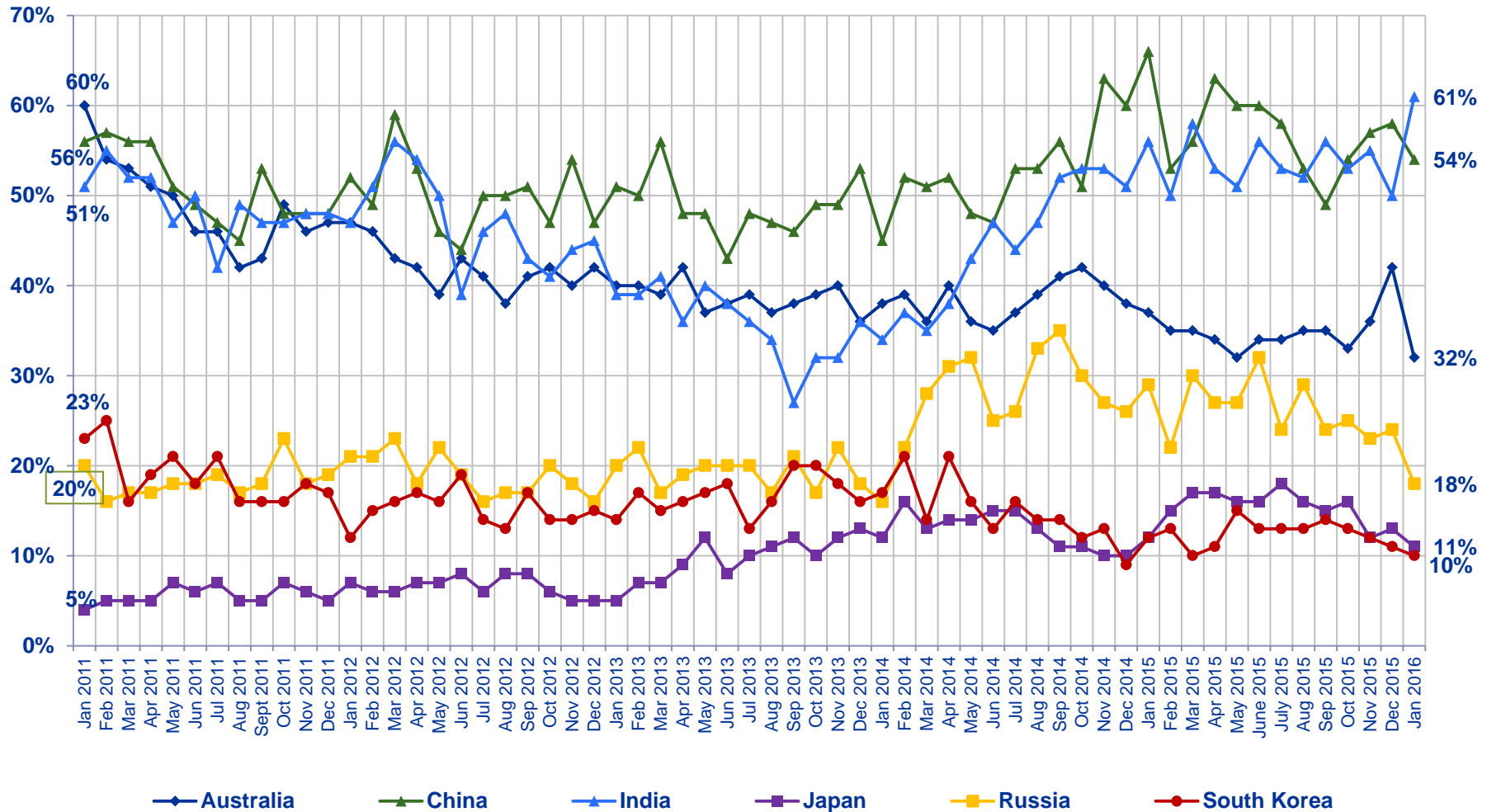


Rate the current state of the economy in your local area using a scale from 1 to 7, where 7 means a very strong economy today and 1 means a very weak economy.

Assess the Strength of Their Local Economy



% Strong (Top 3 5-6-7)

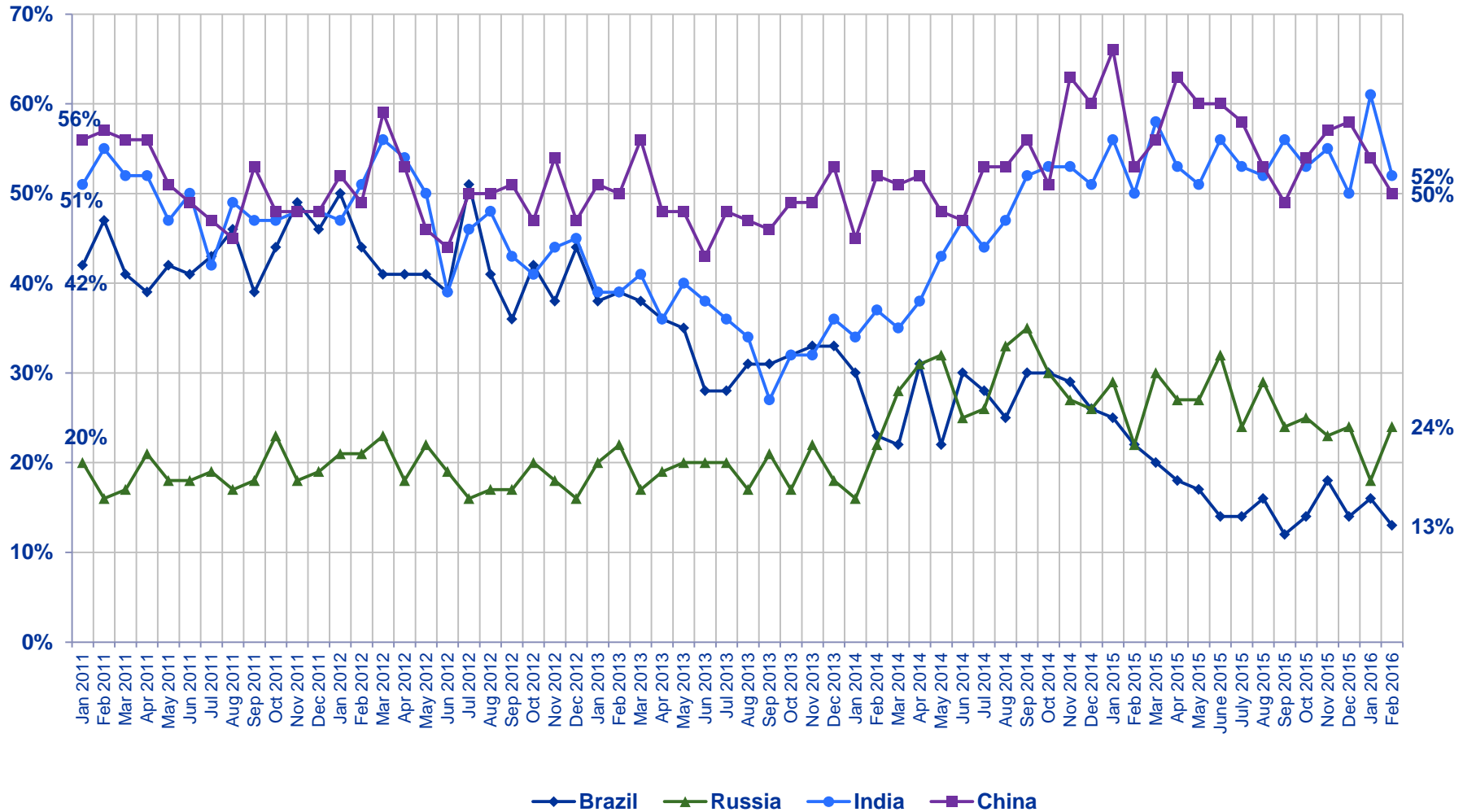


Rate the current state of the economy in your local area using a scale from 1 to 7, where 7 means a very strong economy today and 1 means a very weak economy.

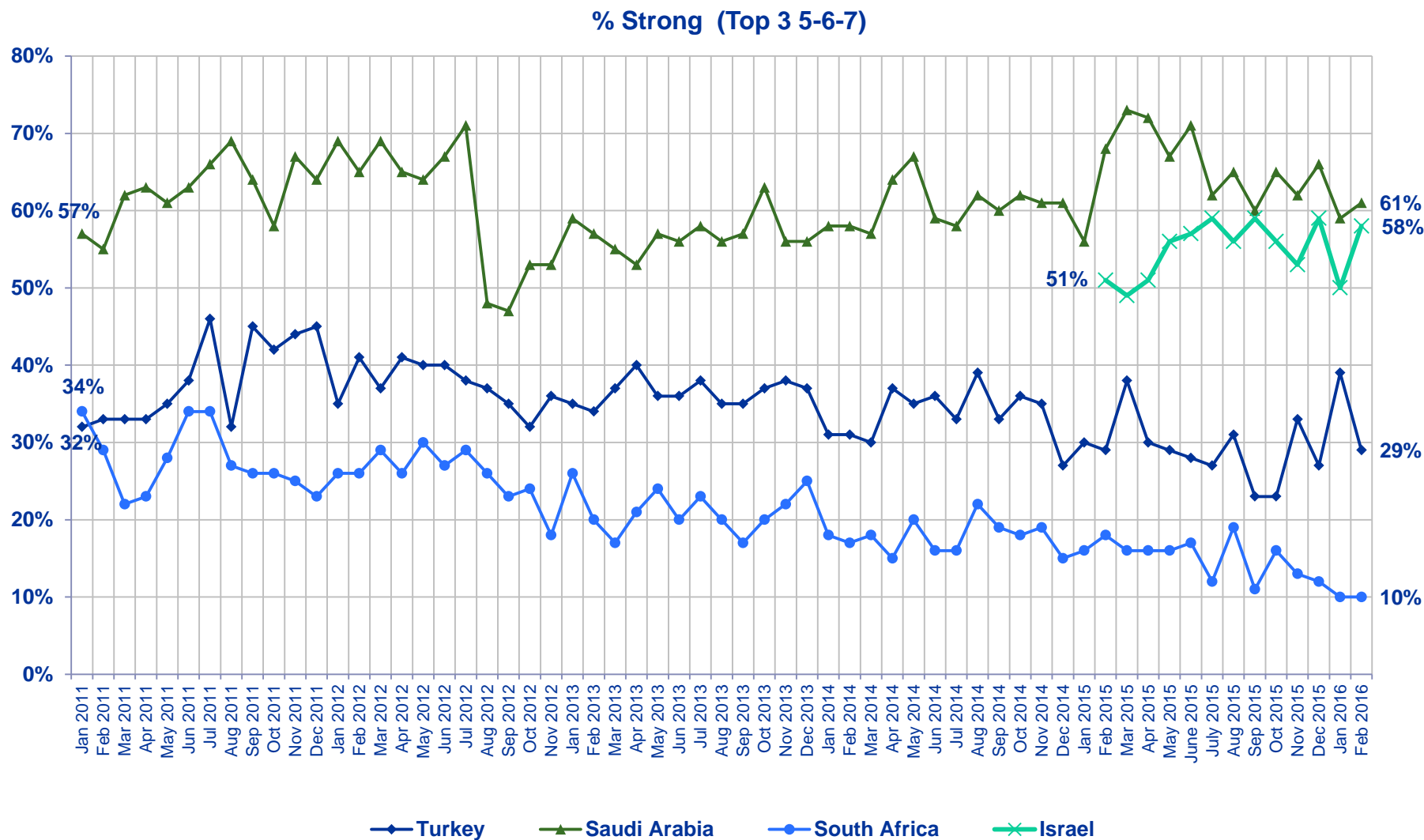


41

% Strong (Top 3 5-6-7)



Rate the current state of the economy in your local area using a scale from 1 to 7, where 7 means a very strong economy today and 1 means a very weak economy.



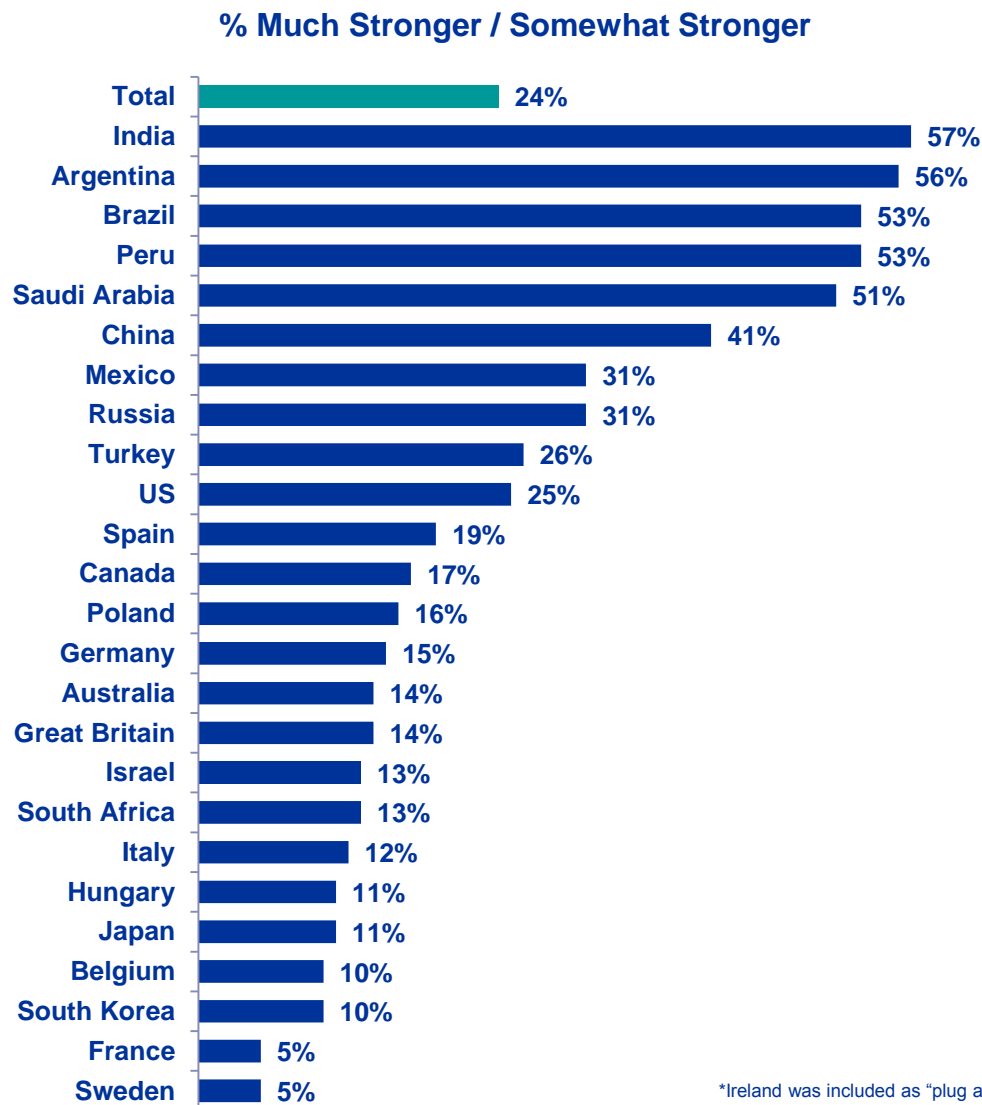
Rate the current state of the economy in your local area using a scale from 1 to 7, where 7 means a very strong economy today and 1 means a very weak economy.

③ Assessing the Strength of The Local Economy...

...Six Months From Now



Citizen Consumers Who Say The Economy in the Local Area to be Stronger in The Next Six Months...

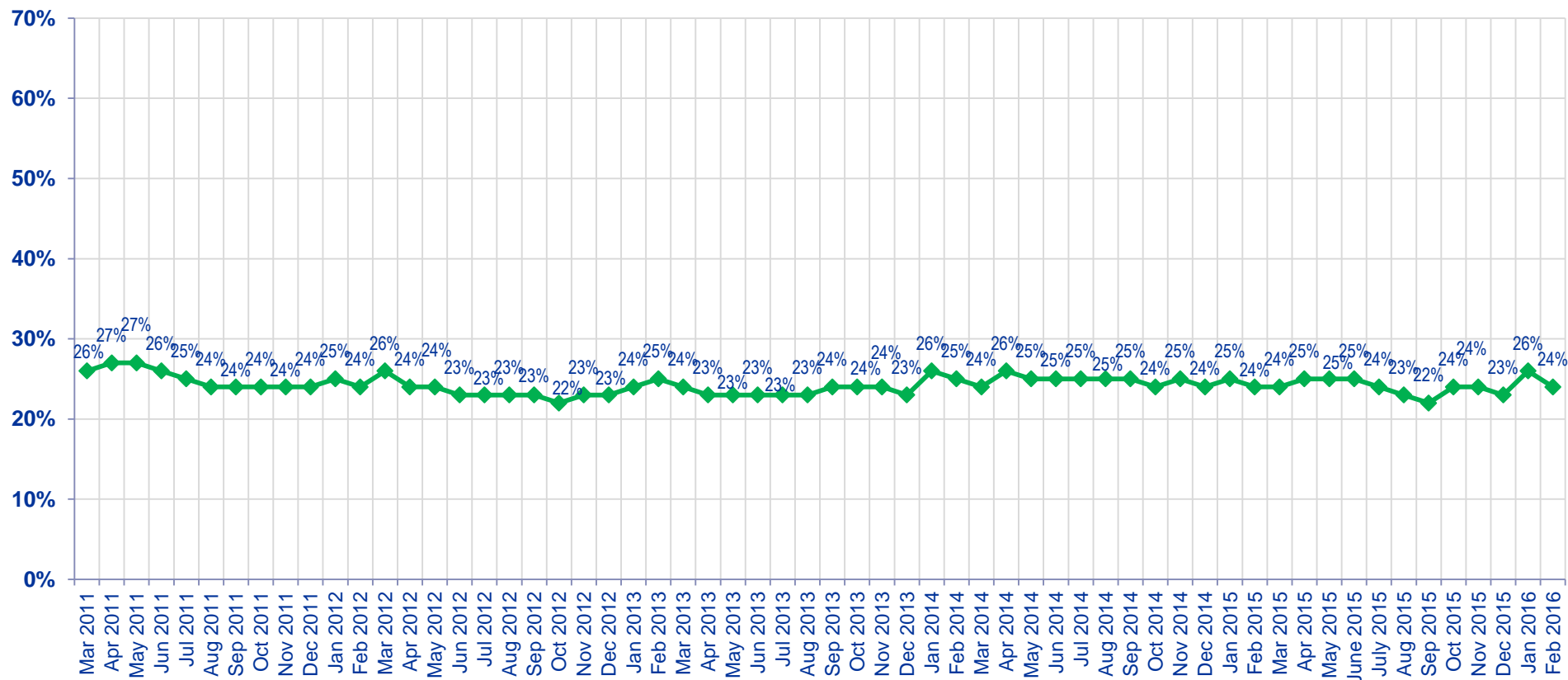


*Ireland was included as "plug and play" country this month and is not reflected in the aggregate.

Looking ahead 6 months from now, do you expect the economy in your local area to be much stronger, somewhat stronger, about the same, somewhat weaker, or much weaker than it is now?

Citizen Consumers Who Say The Economy in the Local Area to be Stronger in The Next Six Months

Global Total
% Much Stronger / Somewhat Stronger



Looking ahead six months from now, do you expect the economy in your local area to be much stronger, somewhat stronger, about the same, somewhat weaker, or much weaker than it is now?

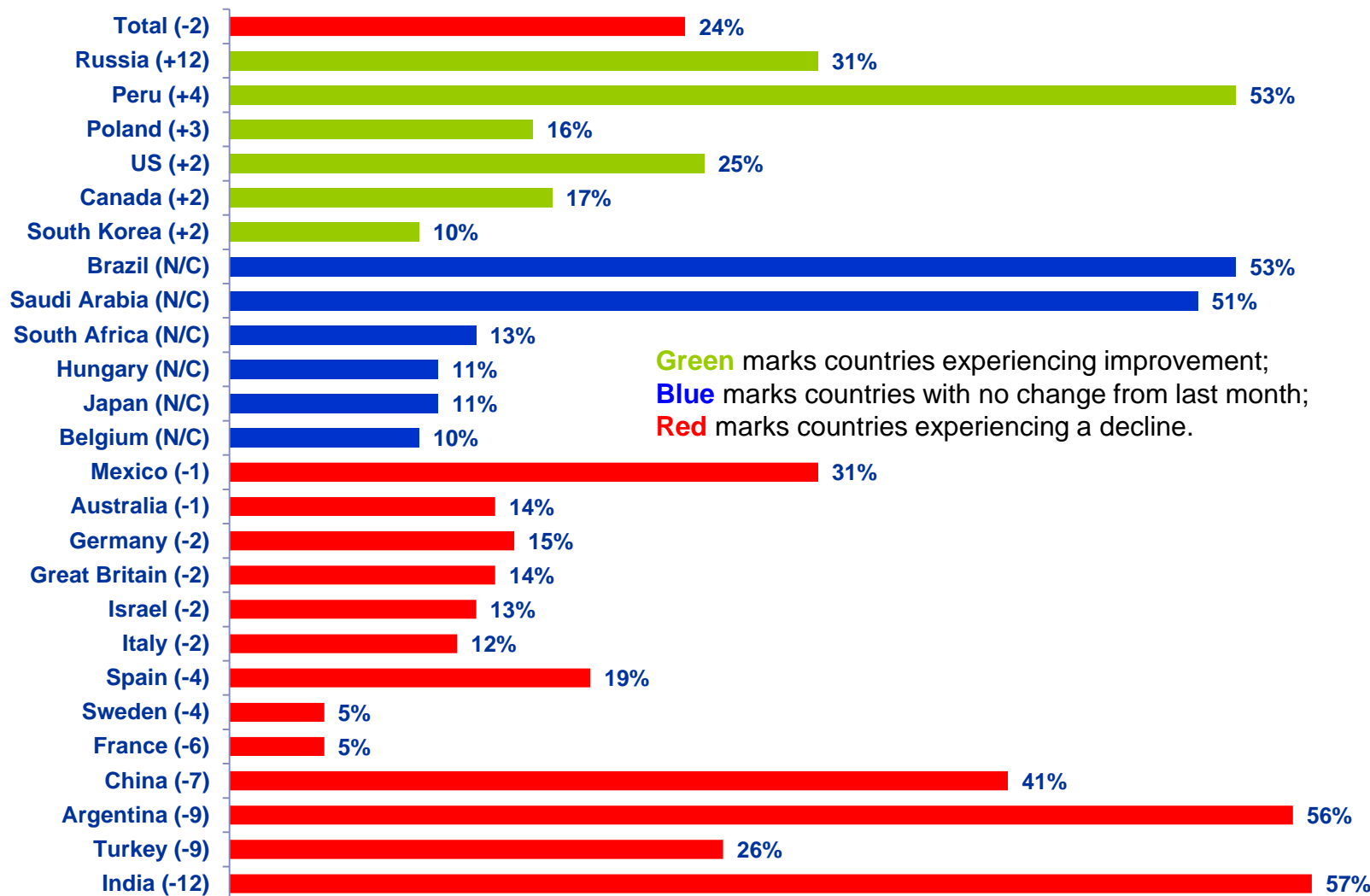
Citizen Consumers Who Say The Economy in the Local Area to be Stronger in The Next Six Months...

% Much Stronger/Somewhat Stronger

	Jan '13	Feb '13	Mar '13	Apr '13	May '13	Jun '13	Jul '13	Aug '13	Sep '13	Oct '13	Nov '13	Dec '13	Jan '14	Feb '14	Mar '14	Apr '14	May '14	Jun '14	Jul '14	Aug '14	Sep '14	Oct '14	Nov '14	Dec '14	Jan '15	Feb '15	Mar '15	Apr '15	May '15	June '15	July '15	Aug '15	Sep '15	Oct '15	Nov '15	Dec '15	Jan '16	Feb '16
Total	24%	25%	24%	23%	23%	23%	23%	23%	24%	24%	24%	23%	26%	25%	24%	26%	25%	25%	25%	25%	25%	24%	25%	24%	25%	24%	24%	25%	25%	25%	24%	23%	22%	24%	24%	23%	26%	24%
Argentina	41%	39%	38%	38%	36%	41%	37%	41%	39%	37%	41%	37%	39%	37%	33%	31%	31%	31%	33%	35%	31%	31%	34%	27%	33%	32%	32%	33%	34%	33%	36%	37%	35%	42%	61%	58%	65%	56%
Australia	12%	17%	15%	14%	14%	14%	15%	19%	29%	21%	20%	18%	15%	16%	16%	17%	16%	13%	13%	15%	19%	18%	17%	18%	15%	17%	13%	18%	12%	17%	16%	15%	16%	20%	17%	19%	15%	14%
Belgium	9%	4%	7%	6%	6%	5%	7%	16%	12%	12%	9%	10%	14%	11%	8%	8%	16%	9%	11%	10%	11%	10%	11%	6%	12%	10%	10%	11%	12%	14%	14%	12%	11%	9%	12%	9%	10%	10%
Brazil	72%	69%	70%	68%	64%	59%	60%	64%	63%	62%	62%	61%	68%	64%	58%	58%	56%	57%	62%	57%	57%	64%	58%	57%	55%	51%	52%	53%	51%	51%	53%	52%	52%	52%	51%	53%	53%	53%
Canada	17%	18%	18%	16%	15%	17%	17%	19%	17%	16%	20%	16%	18%	18%	18%	19%	18%	14%	18%	16%	18%	14%	18%	19%	18%	17%	16%	17%	19%	15%	16%	13%	16%	18%	24%	18%	15%	17%
China	43%	45%	46%	38%	39%	38%	39%	35%	35%	39%	40%	44%	40%	40%	36%	41%	39%	37%	36%	42%	41%	37%	53%	46%	51%	44%	49%	50%	52%	52%	52%	46%	47%	44%	52%	49%	48%	41%
France	3%	2%	3%	3%	3%	3%	4%	5%	5%	6%	3%	5%	6%	4%	5%	7%	6%	4%	3%	3%	2%	4%	4%	4%	4%	5%	5%	7%	5%	5%	5%	5%	4%	6%	5%	6%	11%	5%
Germany	15%	22%	18%	18%	14%	15%	15%	17%	19%	16%	20%	21%	19%	19%	18%	21%	20%	17%	19%	16%	18%	14%	15%	14%	17%	21%	16%	16%	16%	15%	17%	16%	16%	17%	15%	16%	17%	15%
Great Britain	7%	10%	9%	9%	12%	12%	17%	17%	15%	18%	20%	17%	20%	24%	21%	21%	21%	18%	19%	21%	20%	18%	19%	18%	19%	17%	21%	21%	22%	25%	19%	18%	19%	17%	14%	15%	16%	14%
Hungary	8%	9%	8%	9%	8%	10%	8%	11%	11%	10%	11%	14%	17%	13%	12%	14%	14%	10%	11%	11%	13%	16%	11%	9%	8%	11%	10%	11%	8%	11%	10%	10%	8%	9%	12%	12%	11%	11%
India	46%	45%	47%	45%	46%	45%	43%	40%	41%	42%	43%	46%	51%	48%	50%	53%	60%	70%	62%	61%	71%	69%	71%	65%	62%	64%	67%	59%	61%	66%	63%	56%	62%	63%	58%	56%	69%	57%
Israel																										8%	15%	18%	13%	18%	11%	10%	14%	10%	11%	11%	15%	13%
Italy	14%	17%	14%	12%	15%	12%	13%	14%	14%	13%	9%	13%	14%	13%	15%	13%	16%	15%	15%	12%	10%	10%	9%	8%	14%	12%	11%	13%	11%	12%	12%	11%	11%	14%	13%	14%	14%	12%
Japan	18%	20%	24%	23%	28%	15%	18%	15%	18%	18%	15%	15%	19%	18%	15%	13%	14%	13%	15%	12%	12%	10%	10%	12%	13%	14%	15%	17%	14%	14%	15%	13%	12%	12%	11%	13%	11%	11%
Mexico	47%	40%	38%	38%	39%	40%	34%	33%	35%	32%	33%	27%	34%	34%	29%	31%	31%	31%	34%	26%	30%	32%	31%	30%	33%	38%	25%	30%	28%	30%	30%	30%	22%	41%	32%	24%	32%	31%
Peru																																				47%	49%	53%
Poland	9%	11%	12%	13%	10%	12%	12%	13%	11%	16%	13%	12%	17%	14%	14%	14%	17%	15%	17%	15%	15%	17%	18%	18%	13%	12%	15%	20%	16%	16%	17%	18%	16%	15%	14%	17%	13%	16%
Russia	14%	14%	15%	16%	16%	14%	13%	13%	14%	15%	15%	15%	14%	17%	19%	26%	26%	24%	17%	34%	27%	27%	19%	20%	26%	18%	26%	25%	24%	33%	22%	30%	21%	20%	24%	21%	19%	31%
Saudi Arabia	53%	56%	53%	51%	51%	51%	52%	51%	51%	48%	49%	51%	52%	49%	49%	59%	53%	56%	54%	55%	52%	48%	50%	51%	47%	60%	66%	58%	63%	66%	58%	58%	48%	55%	49%	53%	51%	51%
South Africa	15%	13%	10%	13%	14%	16%	12%	13%	11%	15%	14%	16%	12%	13%	15%	11%	13%	15%	18%	16%	18%	15%	20%	16%	15%	16%	12%	13%	13%	11%	10%	13%	11%	12%	15%	11%	13%	13%
South Korea	19%	14%	17%	14%	15%	17%	14%	17%	15%	18%	13%	13%	14%	15%	14%	18%	13%	10%	11%	12%	11%	10%	11%	9%	10%	11%	9%	12%	13%	11%	12%	9%	14%	11%	12%	10%	8%	10%
Spain	14%	15%	15%	12%	16%	15%	15%	17%	21%	15%	19%	19%	18%	18%	19%	18%	19%	17%	19%	18%	20%	13%	17%	16%	20%	20%	20%	20%	20%	23%	21%	23%	22%	21%	21%	22%	23%	19%
Sweden	9%	12%	15%	13%	10%	12%	9%	13%	13%	15%	11%	10%	13%	13%	15%	13%	20%	12%	12%	14%	13%	16%	16%	14%	11%	10%	11%	16%	13%	8%	16%	11%	11%	12%	8%	9%	9%	5%
Turkey	26%	34%	31%	25%	27%	27%	27%	25%	26%	28%	26%	26%	24%	26%	26%	27%	25%	27%	24%	29%	22%	23%	25%	22%	26%	22%	22%	24%	24%	25%	20%	23%	23%	20%	32%	22%	35%	26%
United States	24%	25%	23%	24%	25%	23%	26%	26%	23%	22%	22%	23%	25%	21%	19%	23%	23%	21%	22%	23%	21%	27%	26%	26%	29%	27%	29%	27%	28%	29%	24%	26%	24%	24%	25%	26%	23%	25%

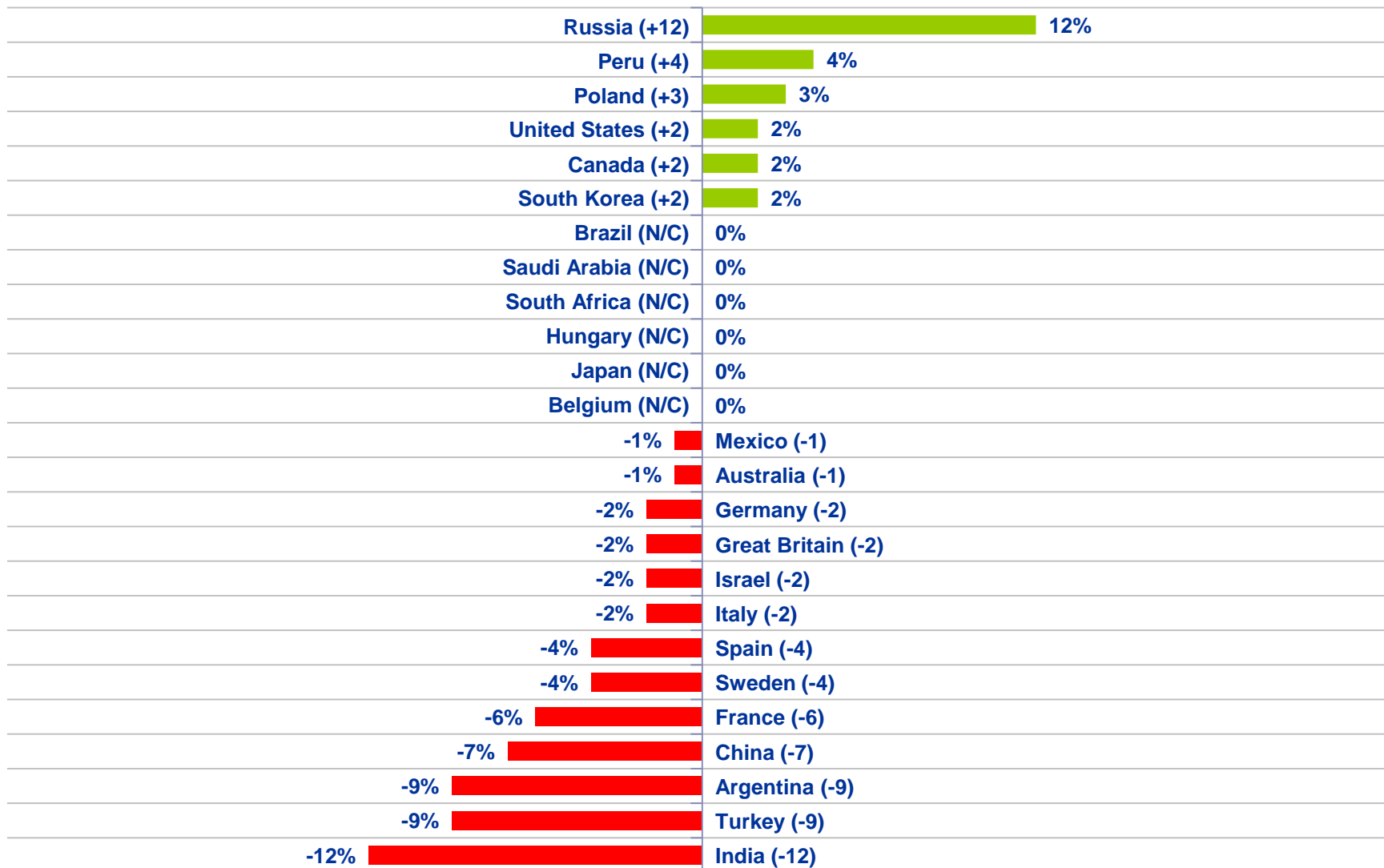
Countries Ranked and Marked By Change In Assessment From Last Month (Left Column):

Looking ahead six months from now, do you expect the economy in your local area to be much stronger, somewhat stronger, about the same, somewhat weaker, or much weaker than it is now?



Countries Ranked by Net Improvement, Decline or No Change Compared to Last Month:

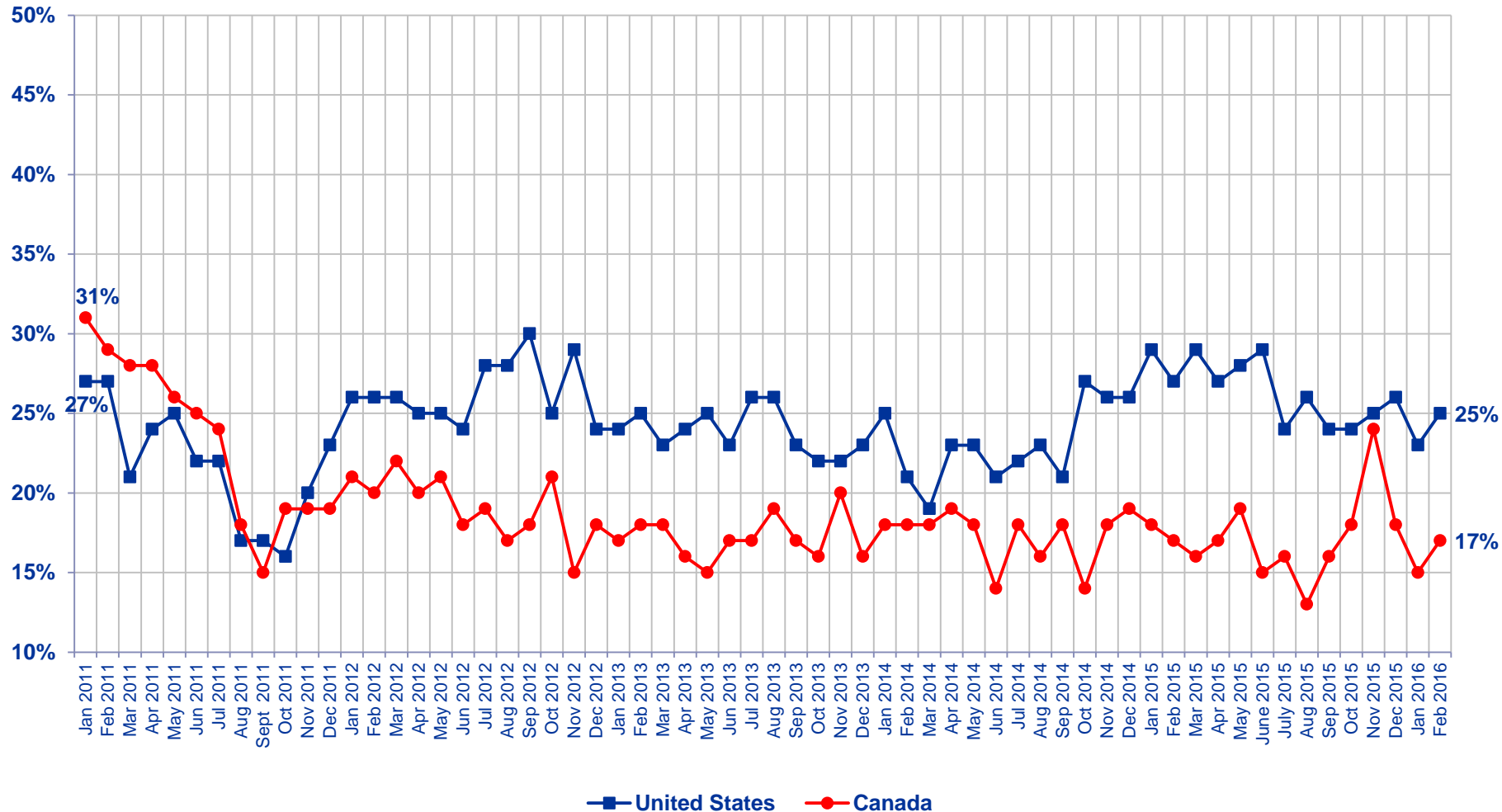
Looking ahead six months from now, do you expect the economy in your local area to be much stronger, somewhat stronger, about the same, somewhat weaker, or much weaker than it is now?



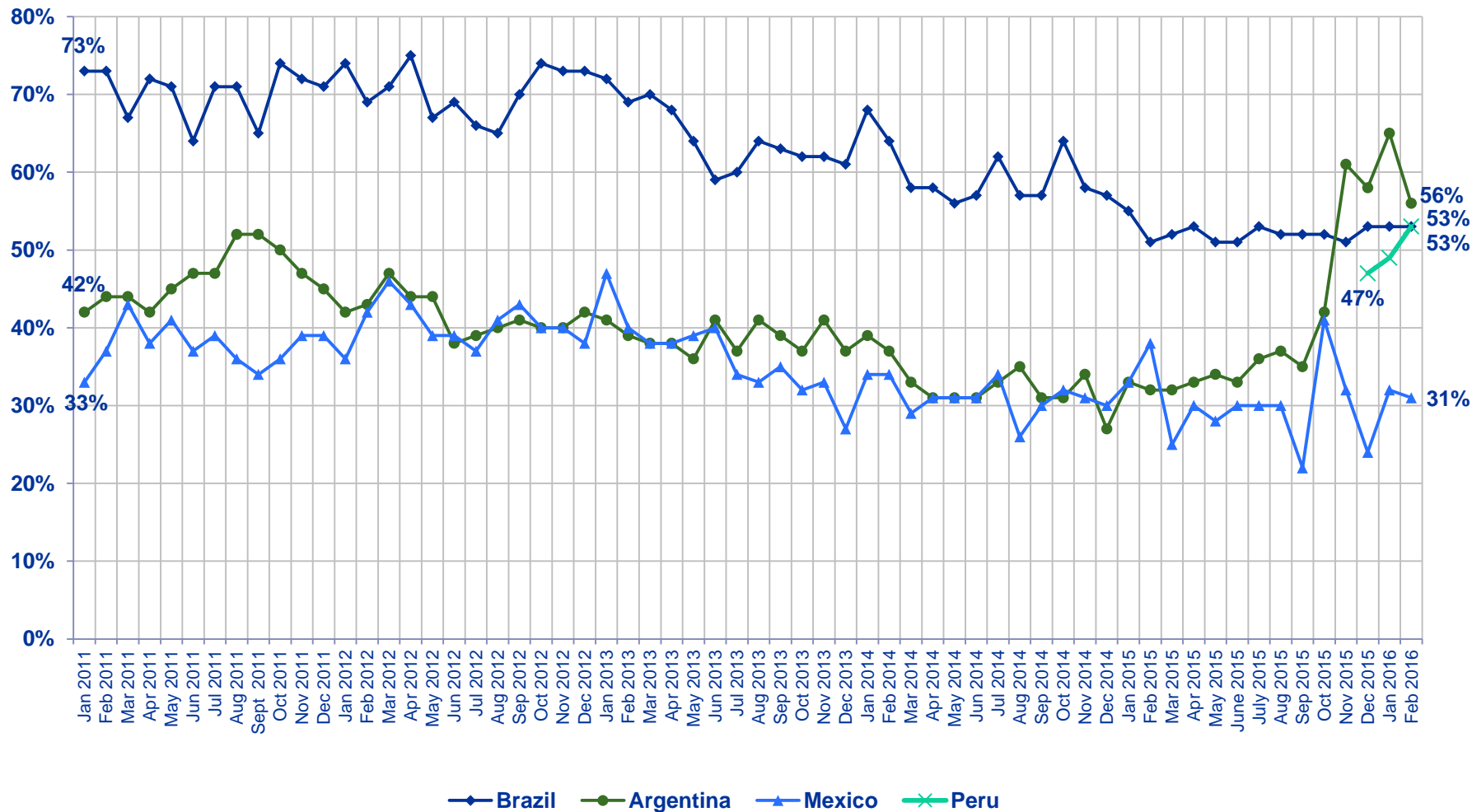


***A Global @dvisory* – February 2016– G@78**
The Economic Pulse

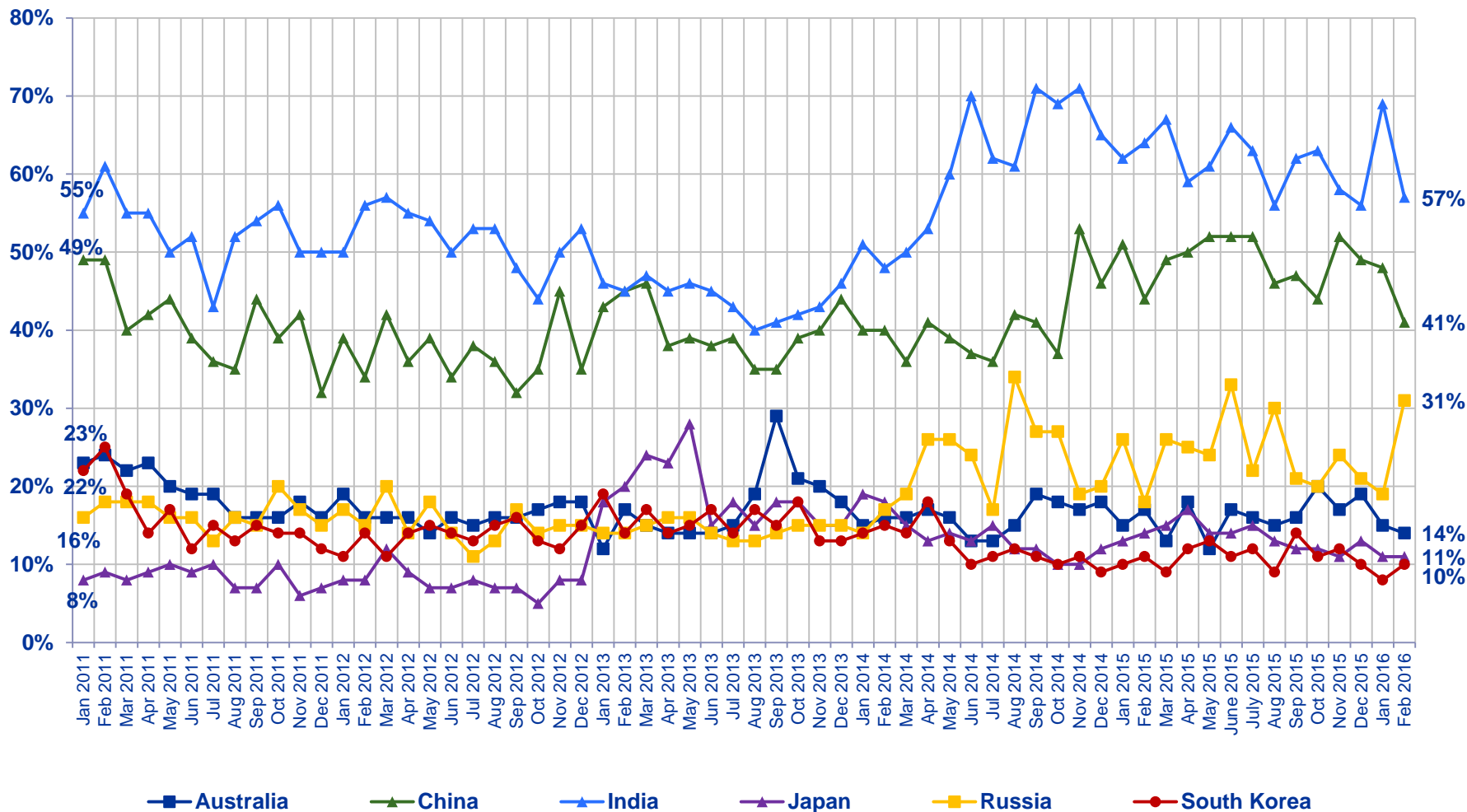
% Much Stronger/Somewhat Stronger



Looking ahead six months from now, do you expect the economy in your local area to be much stronger, somewhat stronger, about the same, somewhat weaker, or much weaker than it is now?



Looking ahead six months from now, do you expect the economy in your local area to be much stronger, somewhat stronger, about the same, somewhat weaker, or much weaker than it is now?



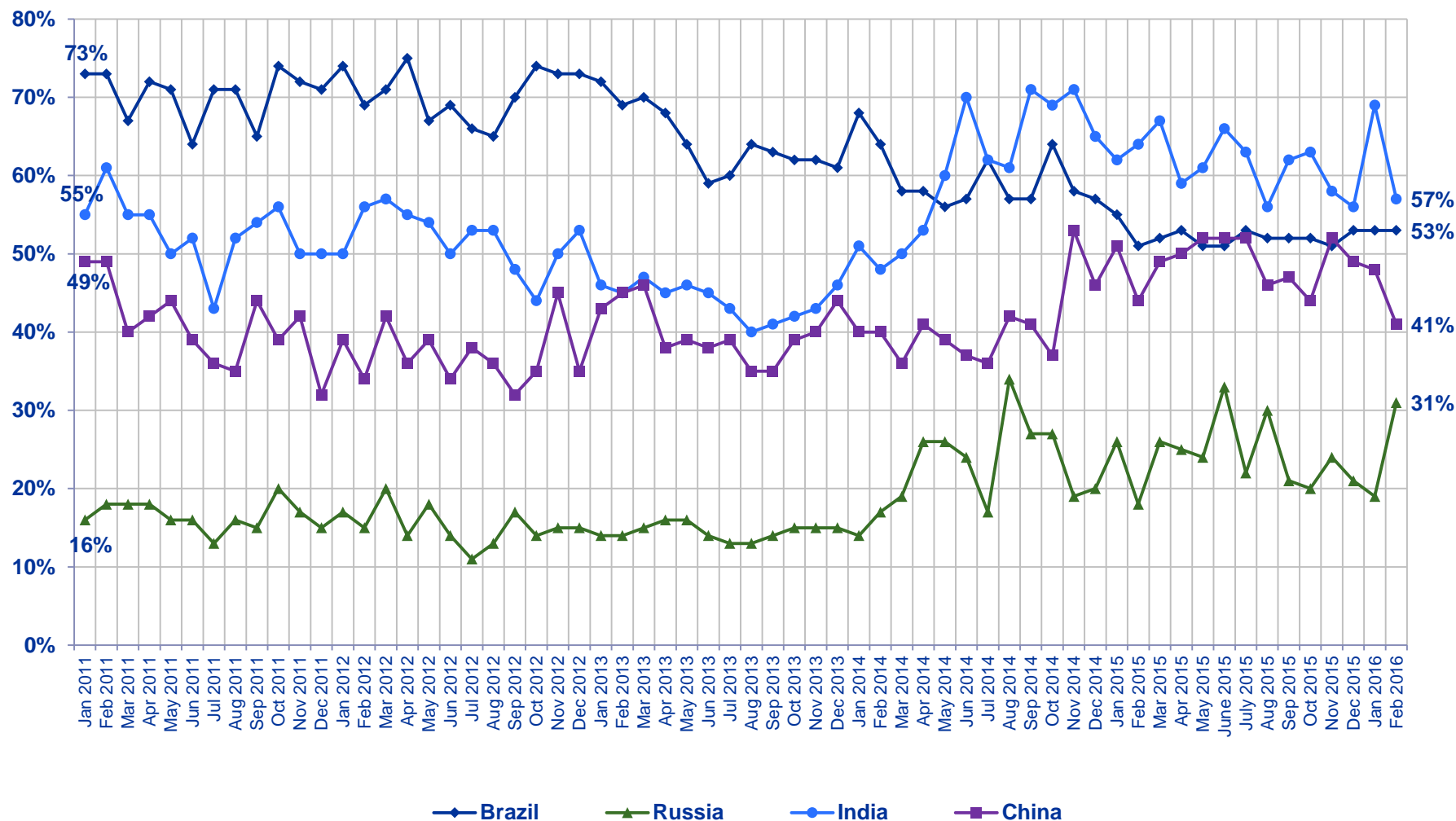
Looking ahead six months from now, do you expect the economy in your local area to be much stronger, somewhat stronger, about the same, somewhat weaker, or much weaker than it is now?

A Global @dvisory – February 2016– G@78
The Economic Pulse



BRIC Countries - Citizen Consumers Who Say The Economy in the Local Area to be Stronger in The Next Six Months

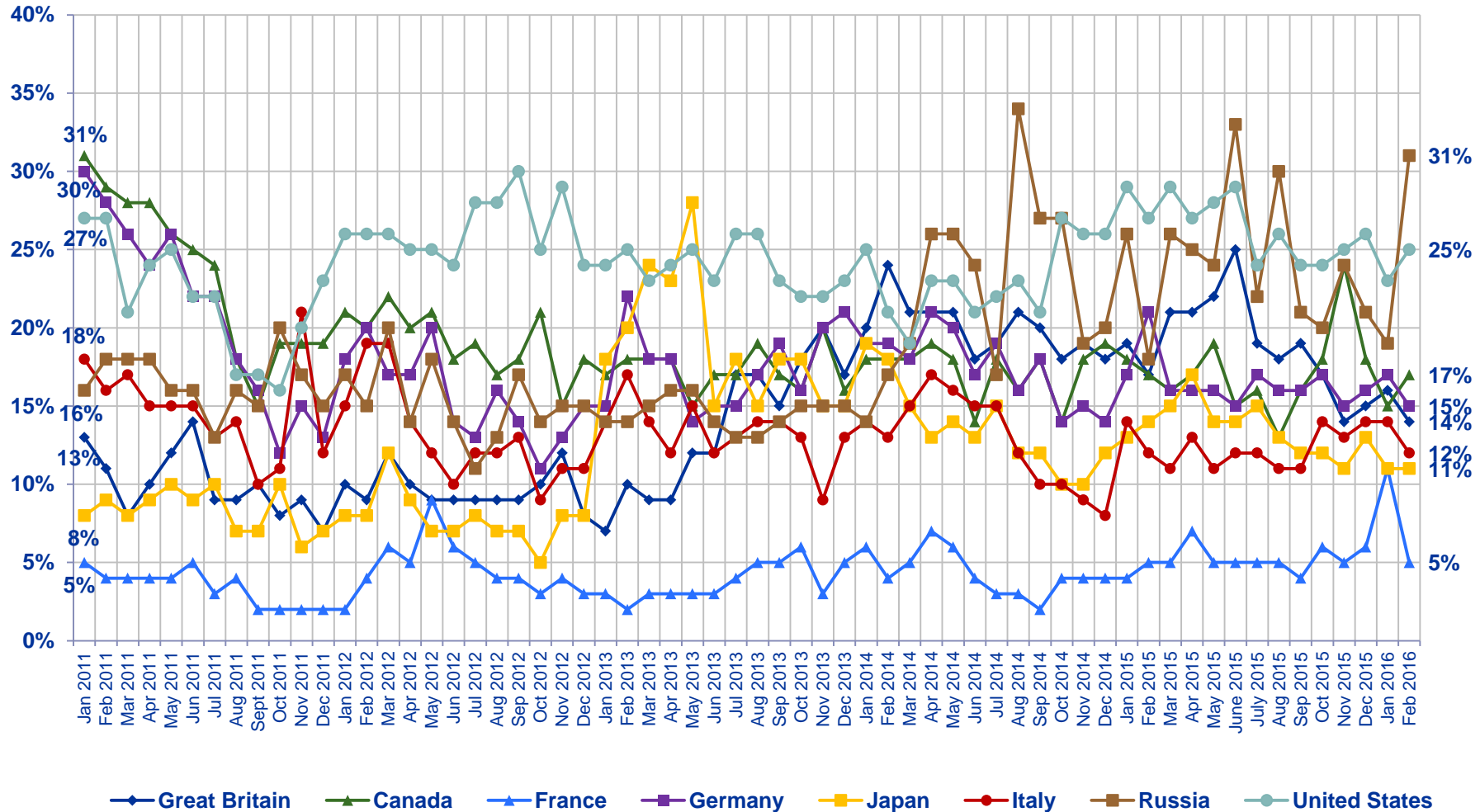
% Much Stronger/Somewhat Stronger



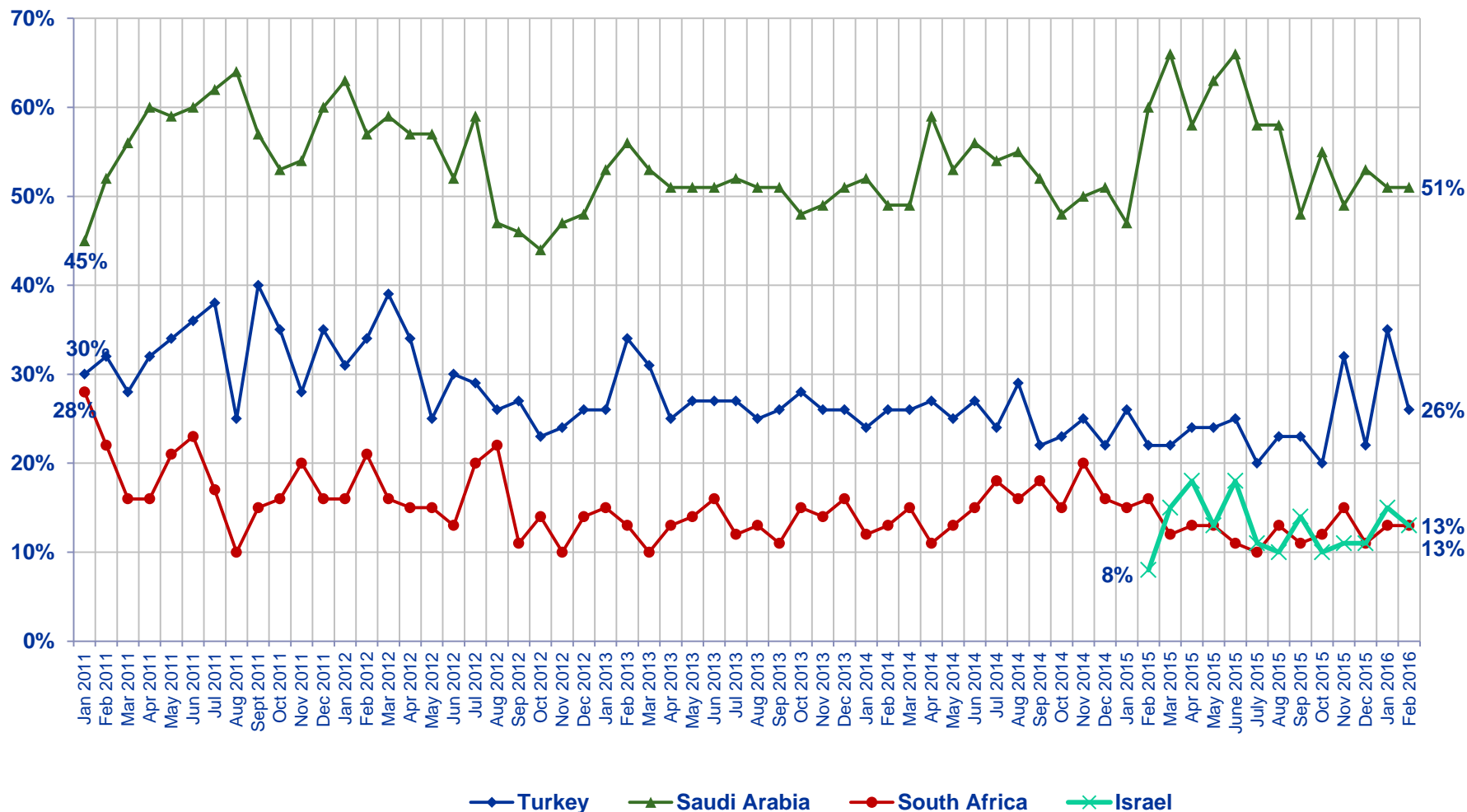
Looking ahead six months from now, do you expect the economy in your local area to be much stronger, somewhat stronger, about the same, somewhat weaker, or much weaker than it is now?

G8 Countries - Citizen Consumers Who Say The Economy in the Local Area to be Stronger in The Next Six Months

% Much Stronger/Somewhat Stronger



Looking ahead six months from now, do you expect the economy in your local area to be much stronger, somewhat stronger, about the same, somewhat weaker, or much weaker than it is now?



Looking ahead six months from now, do you expect the economy in your local area to be much stronger, somewhat stronger, about the same, somewhat weaker, or much weaker than it is now?

- Ipsos is an independent market research company controlled and managed by research professionals. Founded in France in 1975, Ipsos has grown into a worldwide research group with a strong presence in all key markets. In October 2011 Ipsos completed the acquisition of Synovate. The combination forms the world's third largest market research company.
- With offices in 85 countries, Ipsos delivers insightful expertise across six research specializations: advertising, customer loyalty, marketing, media, public affairs research, and survey management.
- Ipsos researchers assess market potential and interpret market trends. They develop and build brands. They help clients build long-term relationships with their customers. They test advertising and study audience responses to various media and they measure public opinion around the globe.
- Ipsos has been listed on the Paris Stock Exchange since 1999 and generated global revenues of €1,789 billion (2.300 billion USD) in 2012.
- Visit www.ipsos.com to learn more about Ipsos' offerings and capabilities.



For information about this and other *Global @dvisor* products contact <http://www.ipsosglobaladvisor.com/> or:

- **Julia Clark**
Senior Vice President
Ipsos Public Affairs +1 (312) 526-4919
julia.clark@ipsos.com
- **Nik Samoylov**
Senior Research Manager
Ipsos Public Affairs +1 (416) 572-4471
nik.samoylov@ipsos.com
- The Ipsos *Global @dvisor* Syndicate Study is a monthly, online survey of consumer citizens in 24 countries and produces syndicated reports and studies specifically tailored to the needs of corporations, advertising and PR agencies, and governments. For information contact:
- **Chris Deeney**
Senior Vice President and Managing Director
Ipsos Public Affairs +1 (312) 665-0551
chris.deeney@ipsos.com
- Visit www.ipsos.com for information about all of our products and services.
Copyright Ipsos 2010. All rights reserved. The contents of this publication constitute the sole and exclusive property of Ipsos.