

March 6, 2019

POTUS RADIO

Clifford Young

President, Ipsos Public Affairs

POTUS Radio

CORE POLITICAL

IPSOS POLL CONDUCTED FOR REUTERS

Core Political Data



These are findings from an Ipsos poll conducted

for

date



REUTERS

February 20–26, 2019

For the survey,

a sample of

including

ages

3,514

Americans

1,426

Democrats

1,292

Republicans

446

Independents

18+

were interviewed online

Core Political Data

The precision of the Reuters/Ipsos online polls is measured using a credibility interval.

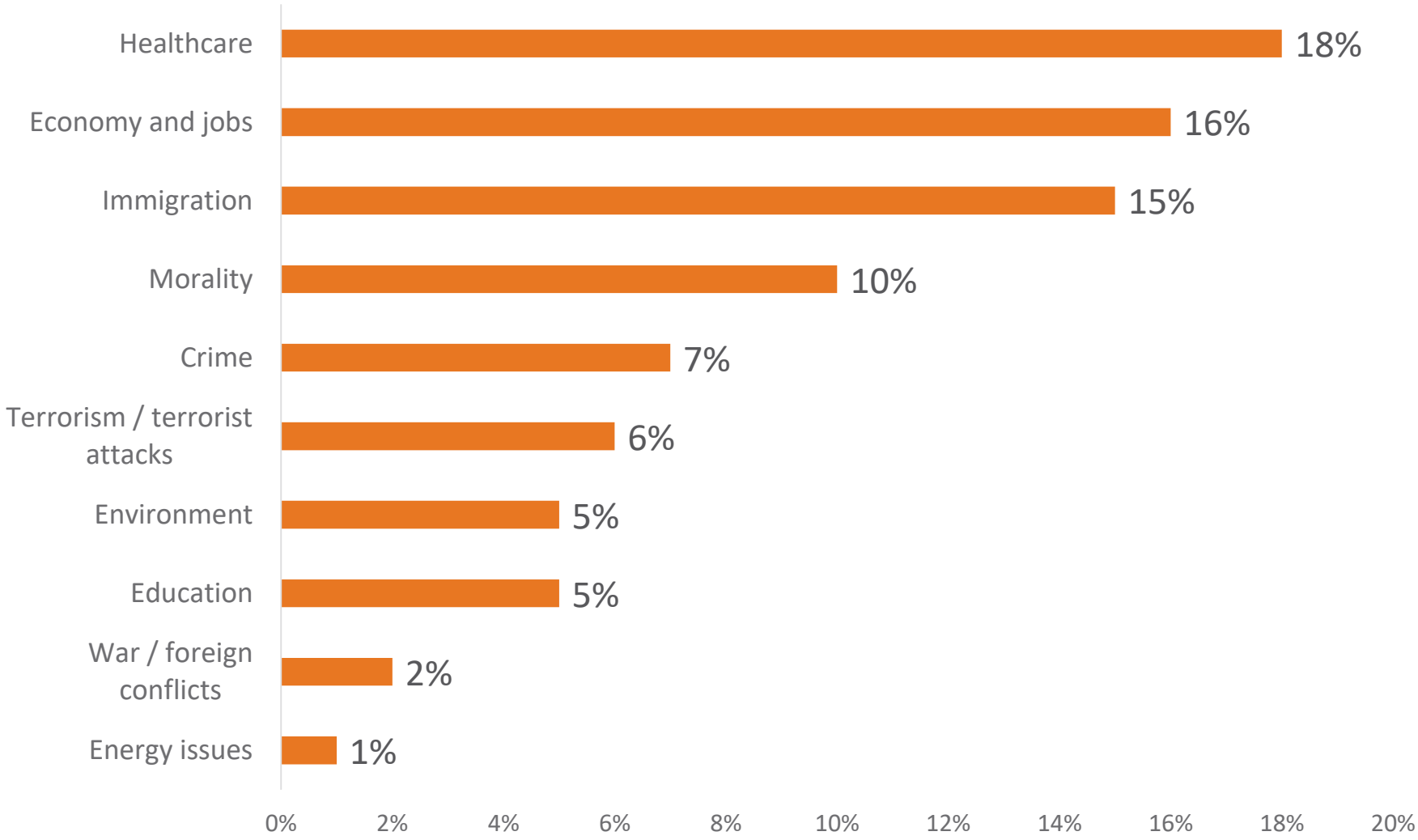
In this case, the poll has a credibility interval of plus or minus the following percentage points



For more information about credibility intervals, please see the appendix.

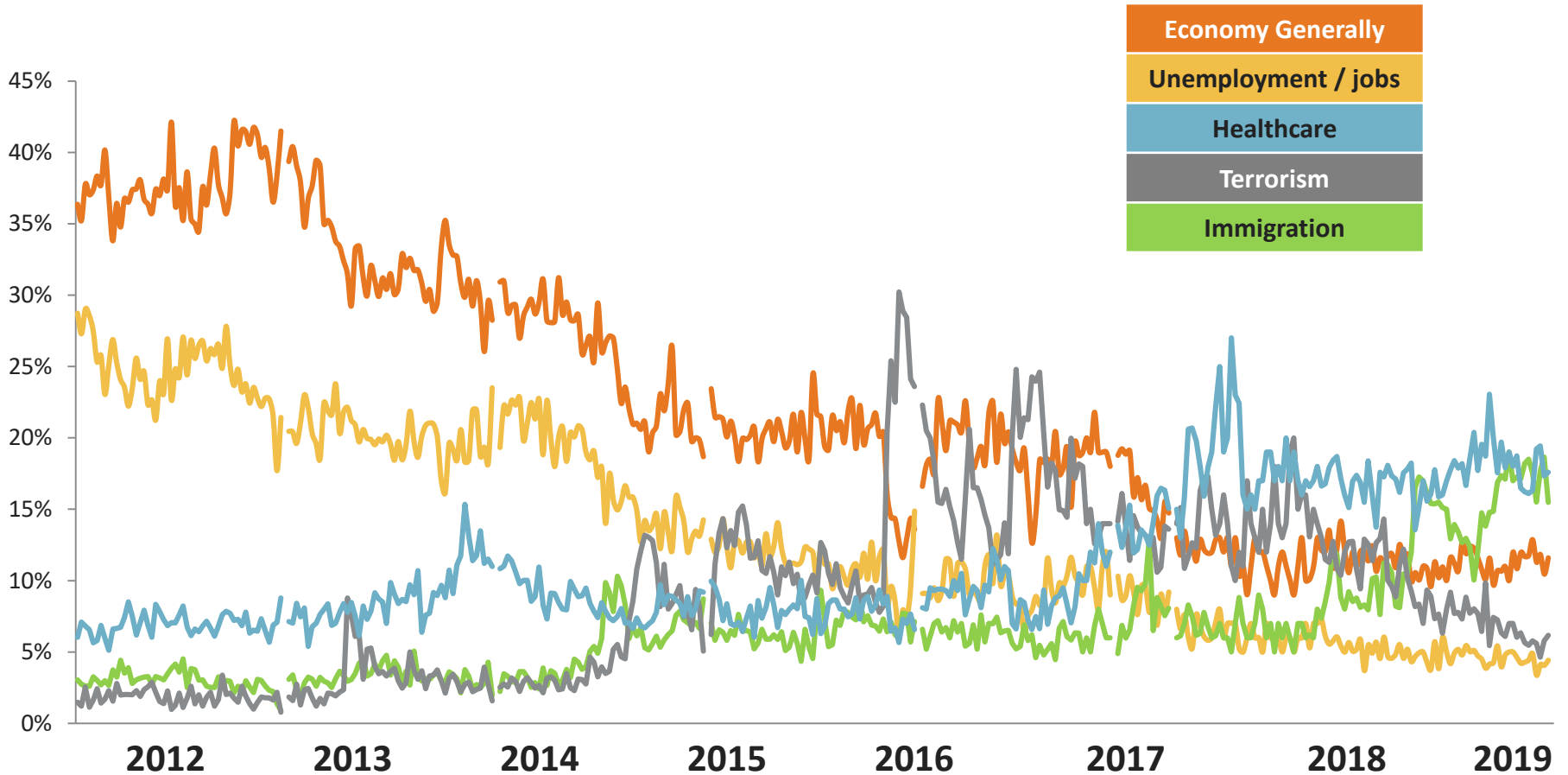
Main Problems

In your opinion, what is the most important problem facing the US today?



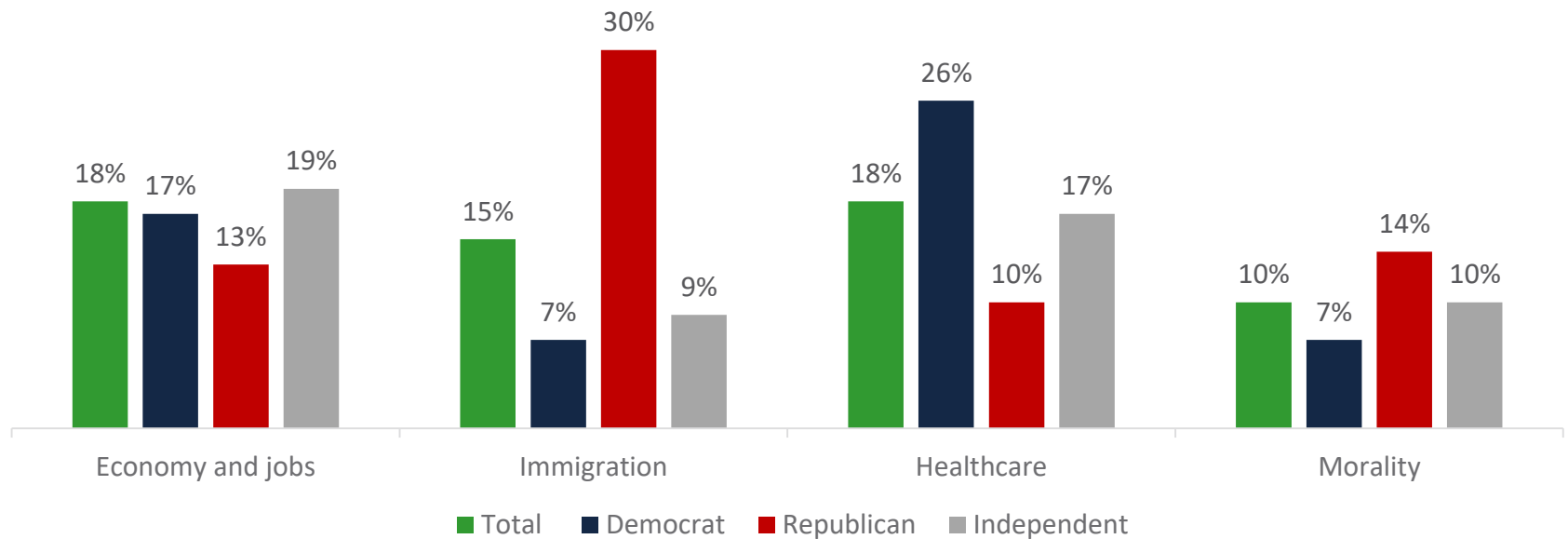
ALL ADULT AMERICANS

Main Problem Facing America



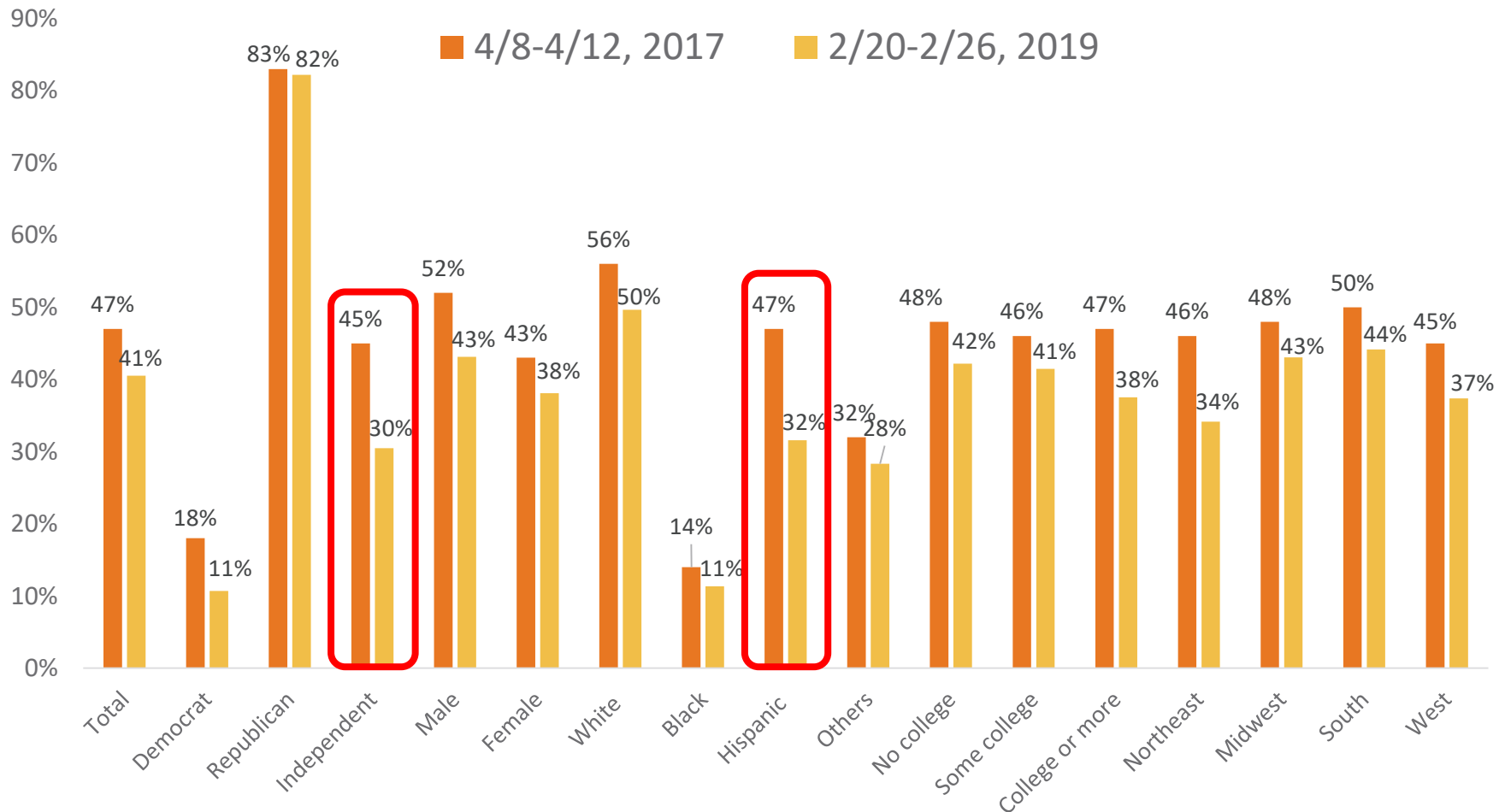
Parties are split on their top issues

In your opinion, what is the most important problem facing the US today?



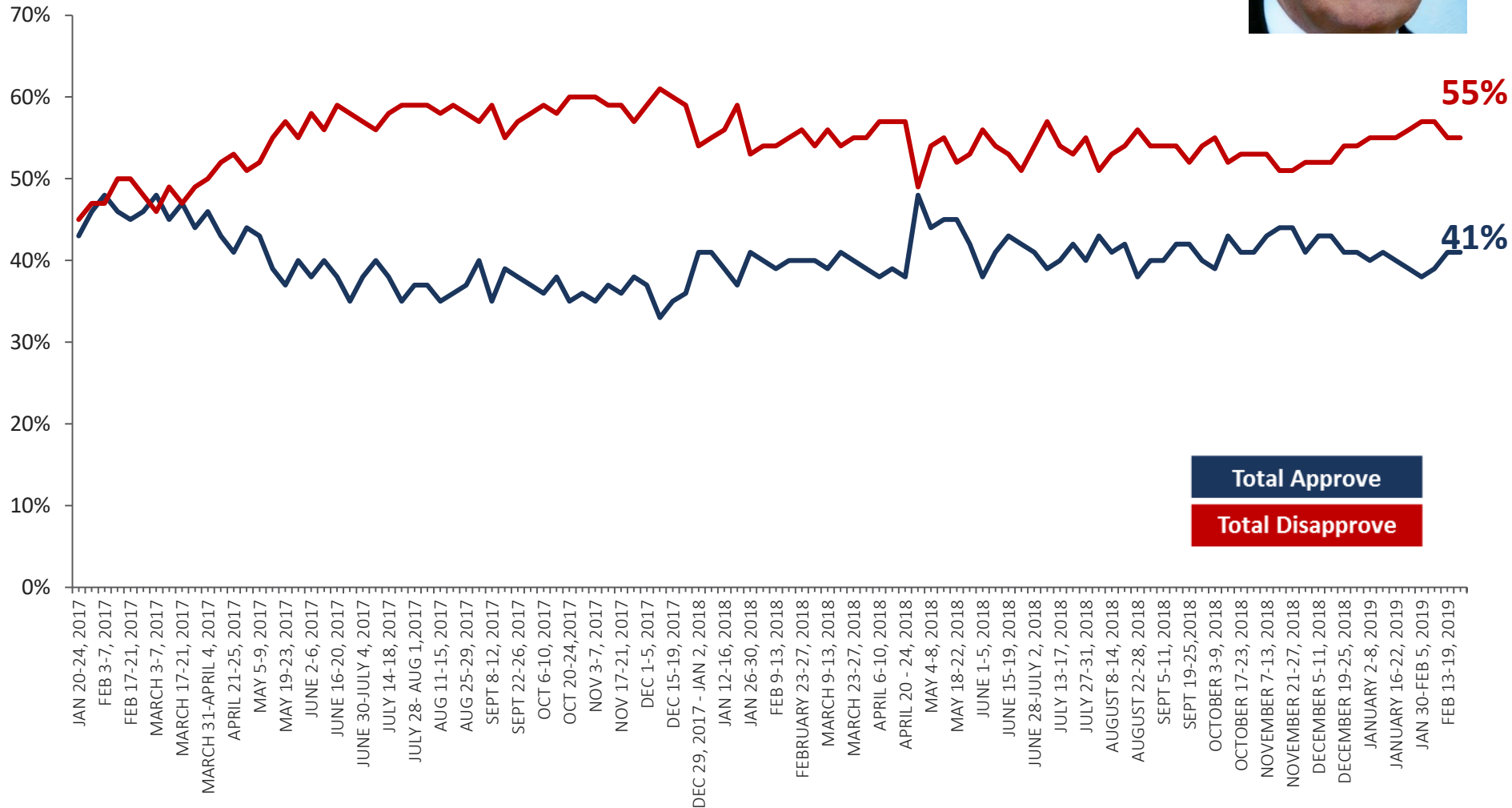
Approval by Demographic

Overall, do you approve or disapprove about the way Donald Trump is handling his job as President? *Approve*



ALL ADULT AMERICANS

Weekly Approval



ALL ADULT AMERICANS

Approval Attributes



Do you approve or disapprove about the way Donald Trump is handling the following issues?

	Strongly approve	Somewhat approve	Lean towards approve	Lean towards disapprove	Somewhat disapprove	Strongly disapprove	Don't know	TOTAL APPROVE	TOTAL DISAPPROVE
The US economy	25%	12%	11%	9%	8%	28%	7%	48%	45%
US foreign policy	19%	12%	10%	9%	8%	34%	9%	41%	51%
Healthcare reform	15%	12%	12%	9%	8%	35%	9%	39%	52%
Employment and jobs	26%	12%	13%	8%	7%	26%	7%	51%	42%
Dealing with Congress	17%	10%	9%	10%	9%	38%	8%	36%	56%
Dealing with ISIS / ISIL	22%	12%	11%	9%	8%	29%	10%	45%	46%
International trade	20%	12%	9%	10%	8%	31%	10%	41%	49%
Taxation	17%	11%	11%	10%	8%	34%	9%	40%	51%
Corruption	17%	10%	9%	9%	7%	38%	10%	35%	54%
The environment	14%	10%	10%	10%	7%	38%	9%	35%	56%
Immigration	26%	10%	8%	6%	6%	39%	6%	43%	51%
The way he treats people like me	17%	10%	8%	8%	7%	41%	8%	36%	57%
The effort he is making to unify the country	19%	10%	9%	9%	6%	39%	7%	38%	55%
Russia	15%	10%	10%	10%	8%	38%	10%	34%	56%

ALL ADULT AMERICANS

Congressional Approval

Split Sampled

Overall, do you approve or disapprove about the way your Congressperson is handling their job as Representative?

	Total	Democrat	Republican	Independent
Strongly approve	13%	17%	14%	5%
Somewhat approve	31%	34%	34%	27%
Somewhat disapprove	20%	20%	22%	24%
Strongly disapprove	14%	14%	15%	21%
Don't know	22%	16%	16%	23%
TOTAL APPROVE	43%	51%	47%	32%
TOTAL DISAPPROVE	34%	33%	37%	45%

Overall, do you approve or disapprove about the way Congress as a whole is handling its job?

	Total	Democrat	Republican	Independent
Strongly approve	5%	6%	7%	1%
Somewhat approve	18%	21%	16%	20%
Somewhat disapprove	36%	41%	35%	39%
Strongly disapprove	31%	26%	38%	32%
Don't know	9%	6%	5%	8%
TOTAL APPROVE	23%	27%	23%	20%
TOTAL DISAPPROVE	67%	67%	73%	72%

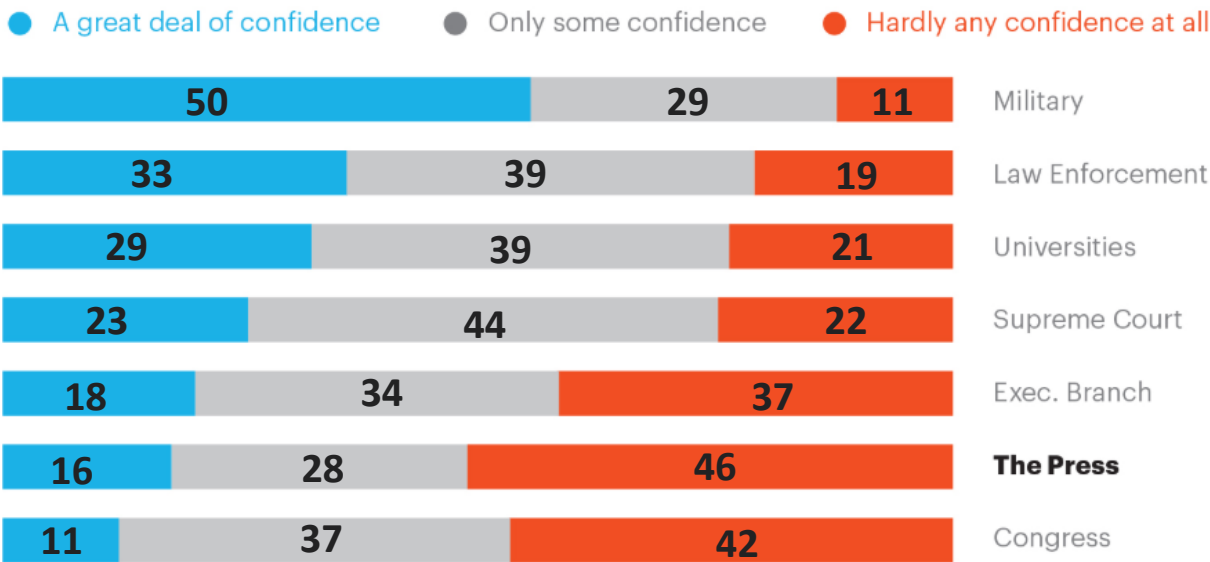
POTUS Radio

JOURNALISTIC INTEGRITY

Americans demonstrate little confidence in the press

Confidence in Institutions

Would you say you have a great deal of confidence, only some confidence, or hardly any confidence at all in the people running this institution?

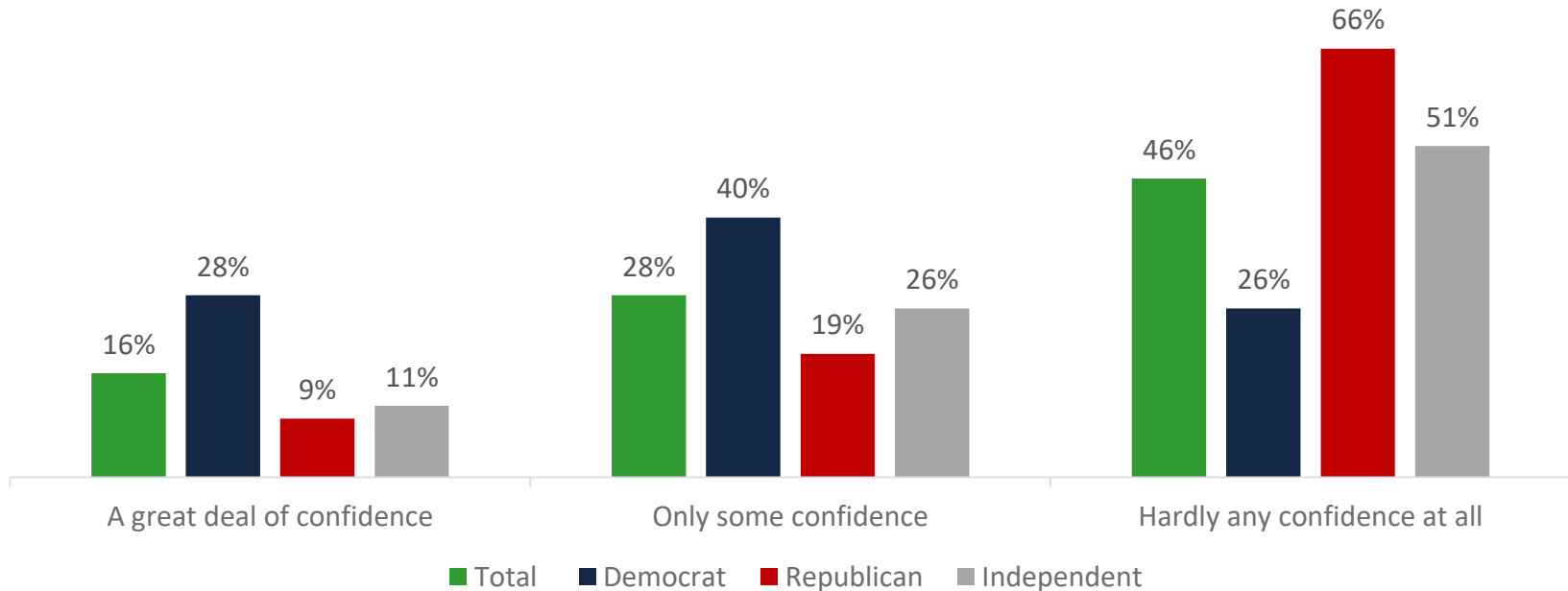


Columbia Journalism Review.

Item 1 of 14

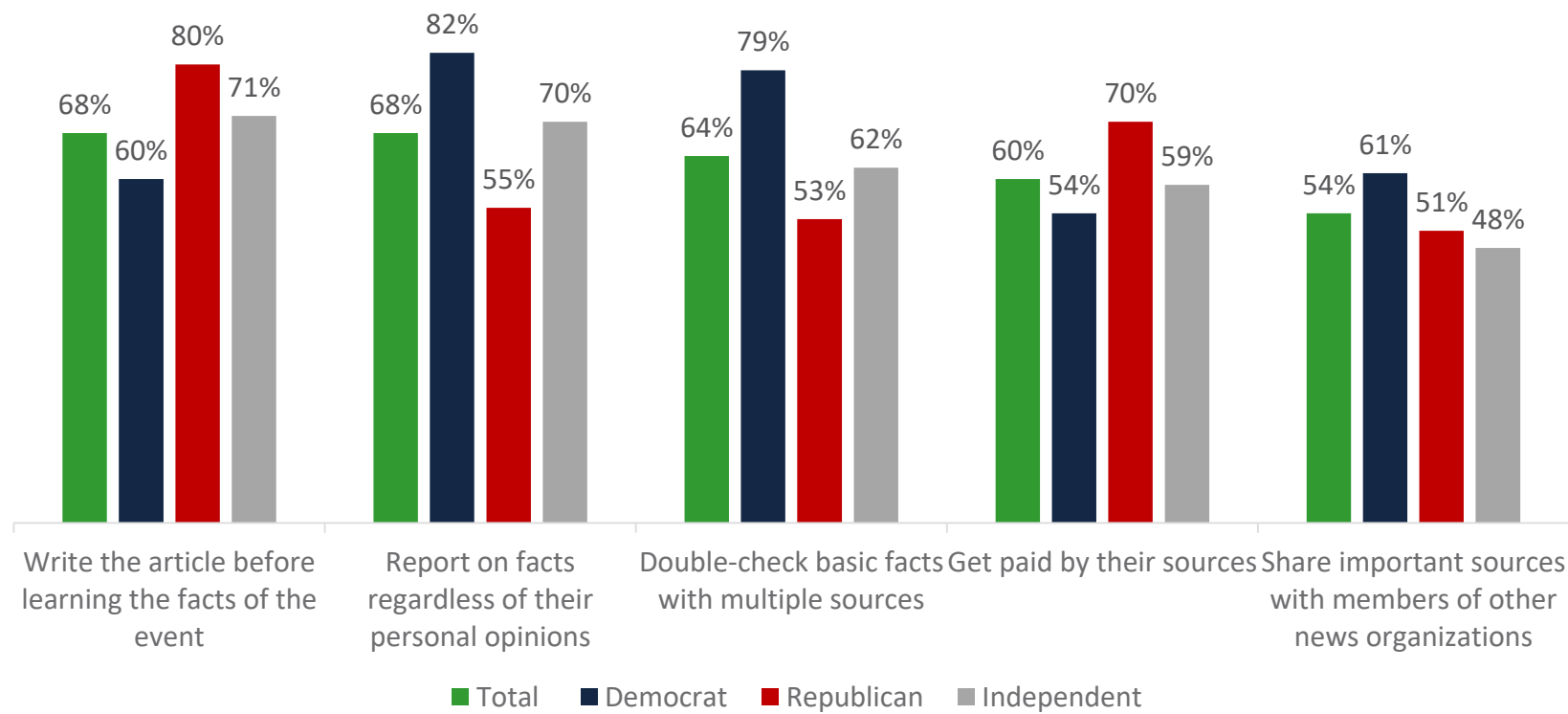
Most Republicans report having hardly any confidence in the press at all. Democrats are hesitant to claim great confidence

Would you say you have a great deal of confidence, only some confidence, or hardly any confidence at all in the people running this institution... Press?



Democrats are more likely to give reporters the benefit of the doubt in assuming they maintain journalistic integrity

When the mainstream media covers the news, how often do you think reporters do the following? (Sometimes or very often)





Clifford Young

President, Ipsos US Public Affairs

✉ Clifford.Young@ipsos.com

📞 +1 312.375.3328

Cliff Young is President of Ipsos Public Affairs in the United States and also leads Ipsos' global election and polling risk practice. He is a polling expert with specialties in social and public opinion trends, crisis management, corporate and institution reputation and elections. Cliff is a contributor to POTUS Radio and has served as an expert commentator on Fox News and NPR, among others. Cliff is also an adjunct professor at Johns Hopkins SAIS and an instructor at both Columbia University SIPA and University of São Paulo where he teaches courses on public opinion and election forecasting.

(MORE BIO INFO: <http://spotlight.ipsosna.com/index.php/author/clifford-young/>)