

# Dion's Liberals (35%) Edge Ahead of Harper's Conservatives (33%)

*Federal Conservatives Plunge 23 Points in Alberta,  
Liberals Surge 20 Points*

Public Release Date: Saturday, January 12, 2008, 6:00 AM, EST



**Ipsos Reid**

*Ipsos Reid is Canada's market intelligence leader and the country's leading provider of public opinion research. With operations in eight cities, Ipsos Reid employs more than 300 research professionals and support staff in Canada. The company has the biggest network of telephone call centres in Canada, as well as the largest pre-recruited household and on-line panels. Ipsos Reid's Canadian marketing research and public affairs practices are staffed with seasoned research consultants with extensive industry-specific backgrounds, offering the premier suite of research vehicles in Canada—including the Ipsos Trend Report, the leading source of public opinion in the country—all of which provide clients with actionable and relevant information. Ipsos Reid is an Ipsos company, a leading global survey-based market research group. To learn more, visit [www.ipsos.ca](http://www.ipsos.ca)*

*For copies of other news releases, please visit  
<http://www.ipsos-na.com/news/>*

---

© Ipsos Reid

*Washington ∙ New York ∙ Chicago ∙ Minneapolis ∙ Seattle ∙ San Francisco  
Vancouver ∙ Edmonton ∙ Calgary ∙ Winnipeg ∙ Toronto ∙ Ottawa ∙ Montreal*



## **Dion's Liberals (35%) Edge Ahead of Harper's Conservatives (33%)**

***Federal Conservatives Plunge 23 Points in Alberta,  
Liberals Surge 20 Points***

**Ottawa, ON** – A new Ipsos Reid poll conducted on behalf of CanWest News Service and Global Television finds that the Conservatives under Stephen Harper have fallen slightly behind the Liberals, slipping two points to 33% support nationally among decided voters.

The Liberals, on the other hand, have gained two points and now sit at 35% support, edging ahead of the Tories by two points, a statistical tie. The New Democratic Party has the support of 13% of Canadians, a decline of two points, while the Green Party has the support of 9% decided voters, an increase of one point. Seven percent (7%) of voters remain undecided.

It appears that the slip in support for the Tories, and subsequent boost for the Liberals, is a result of the Conservatives plunging from 66% to 43% support in Alberta—a decline of 23 points – perhaps attributed to the rough ride that Albertans have been giving the provincial Conservative Stelmach government recently. Benefiting from the decline in support for the federal Tories within Alberta is Dion's Liberal Party, jumping from 10% to 30% support, representing an increase of 20 points.

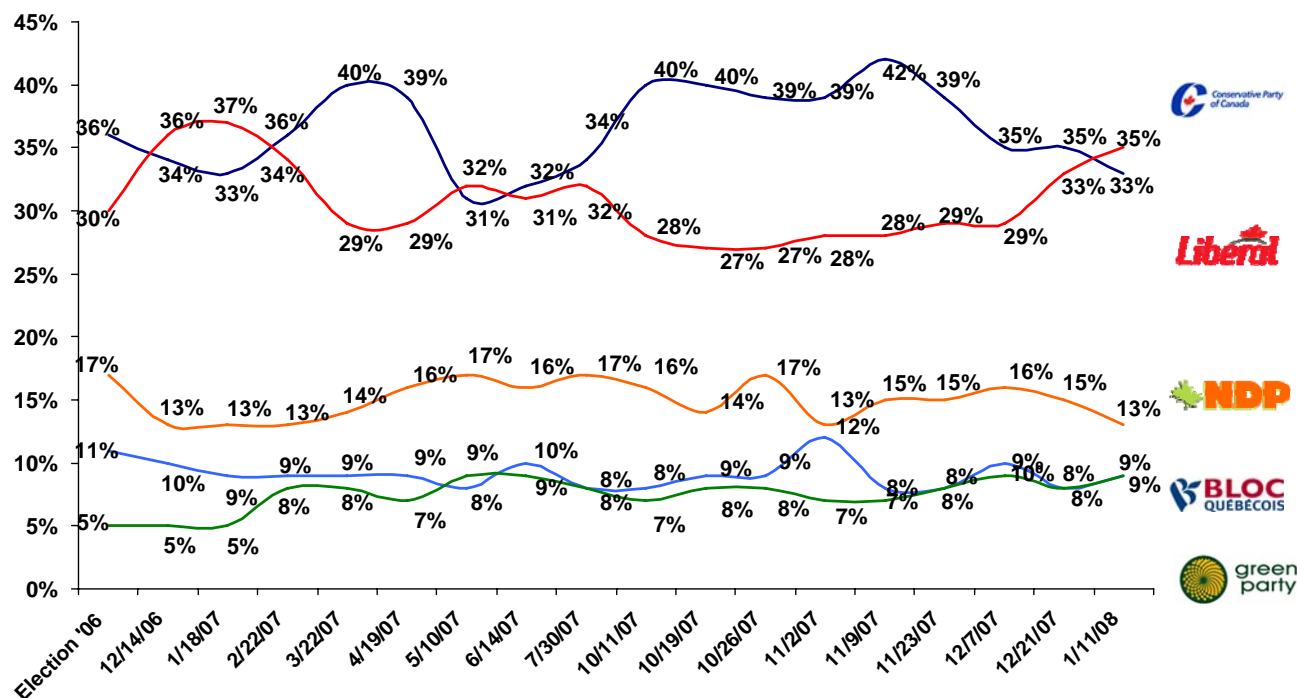
Within vote-rich Ontario, the Tories have narrowed the gap and now have the support of 37% of Ontarians, an increase of four points. The Liberals, though, maintain a lead of four

points, sitting at 41% support (a decline of two points). The NDP has dipped to 12%, a decline of two points, and the Green Party has risen by one point to 9% support.

In Quebec, the Bloc has the support of 35% of decided voters, an increase of four points, and maintains a lead over the second-place Liberals at 26%, whose support has decreased by one point. The Conservatives are in third place in Quebec, garnering support from 21% of voters, a decline of two points, while the NDP has slipped three points to 10% support. The Green Party has the support of 7% of Quebecers, an increase of one point.

## Federal Vote Support

January 11, 2007, percentage of decided voters.



CanWest News Service/Global News Ipsos Reid Survey, Jan 8-Jan 10, 2008. Decided voters including leaners (868).

7% of all Canadian adults (n=1,000) are undecided



Ipsos Reid

*These are the findings of an Ipsos Reid poll conducted on behalf of CanWest News Service and Global Television from January 8 to January 10, 2008. For the survey, a representative randomly selected sample of 1005 adult Canadians was interviewed by telephone. With a sample of this size, the results are considered accurate to within  $\pm 3.1$  percentage points, 19 times out of 20, of what they would have been had the entire adult population of Canada been polled. The margin of error will be larger within regions and for other sub-groupings of the survey population. These data were weighted to ensure that the sample's regional and age/sex composition reflects that of the actual Canadian population according to Census data.*

***For more information on this news release, please contact:***

***Dr. Darrell Bricker  
President and CEO  
Ipsos Reid  
Public Affairs  
(416) 324-2001***

***For full tabular results, please visit our website at [www.ipsos.ca](http://www.ipsos.ca). News Releases are available at: <http://www.ipsos-na.com/news/>***

---

© Ipsos Reid

- 3 -

***Washington λ New York λ Chicago λ Minneapolis λ Seattle λ San Francisco  
Vancouver λ Edmonton λ Calgary λ Winnipeg λ Toronto λ Ottawa λ Montreal***