



Ipsos Reid



# Global TV Canada's Pulse 2011

Regina



Nobody's Unpredictable



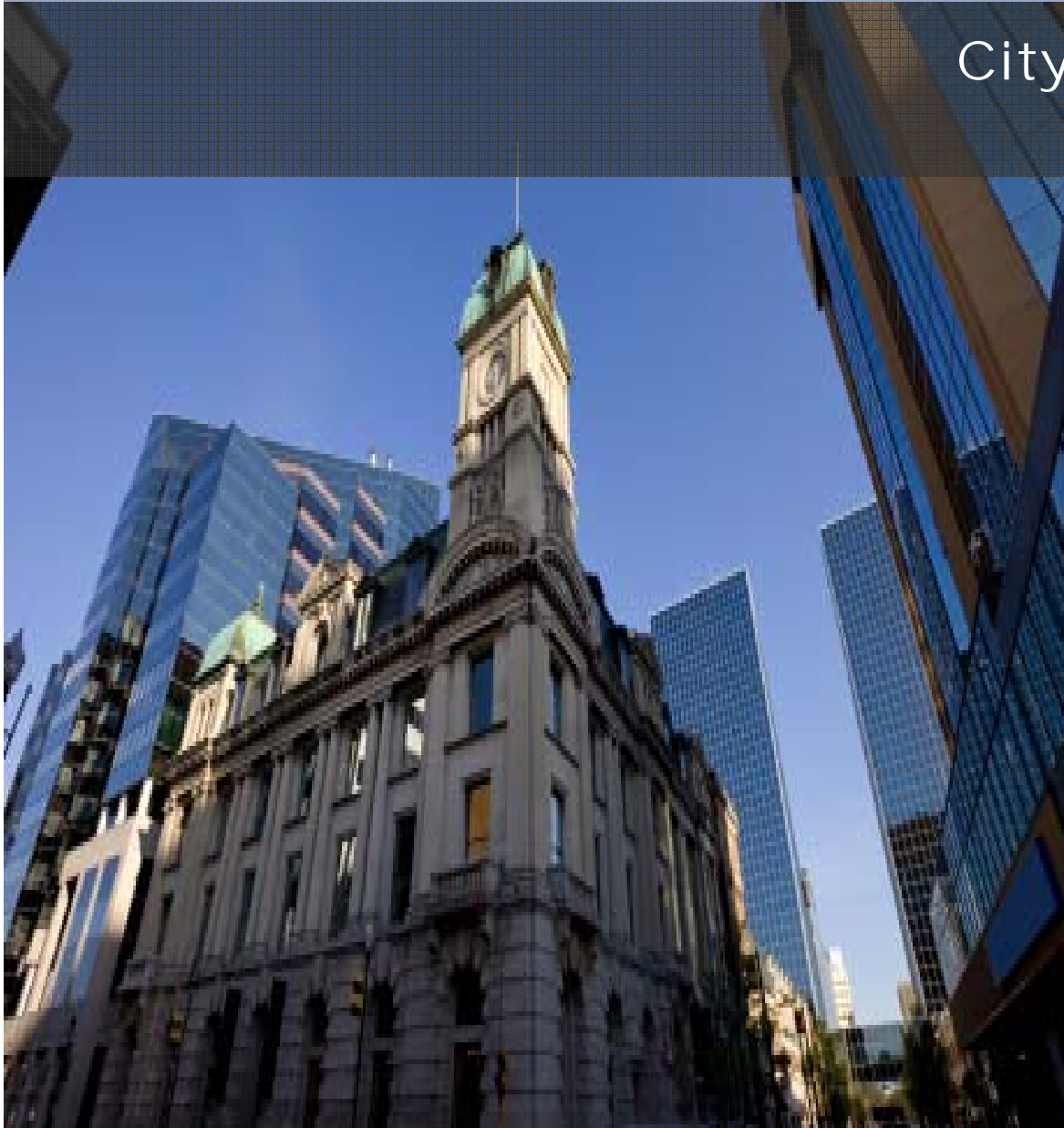
## Methodology

---

- These are the findings of an Ipsos Reid poll conducted between August 26 to September 1, 2011 on behalf of Global Television. For this survey, a sample of 6,883 Canadians from Ipsos' Canadian online panel was interviewed online as follows: Metro Vancouver (n=407), Kelowna Area (n=403), Calgary (n=400), Edmonton (n=412), Regina (n=402), Saskatoon (n=408), Winnipeg (n=401), Toronto (n=414), Montreal (n=407), Halifax (n=404), Nova Scotia outside Halifax (n=403) New Brunswick (n=408), Rest of Canada (n=2,014)
- Weighting was then employed to balance demographics and ensure that the sample's overall composition reflects that of the adult population according to Census data and to provide results intended to approximate the sample universe.
- A survey with an unweighted probability sample of this size and a 100% response rate would have an estimated margin of error of:
  - +/-4.8 percentage points for each individual city/region, 19 times out of 20, of what the results would have been had the entire population of that particular city or region been polled;
  - +/-1.2 percentage points for the national Canadian population, 19 times out of 20, of what the results would have been had the entire population of adults living in Canada been polled.
- All sample surveys and polls may be subject to other sources of error, including, but not limited to coverage error, and measurement error.

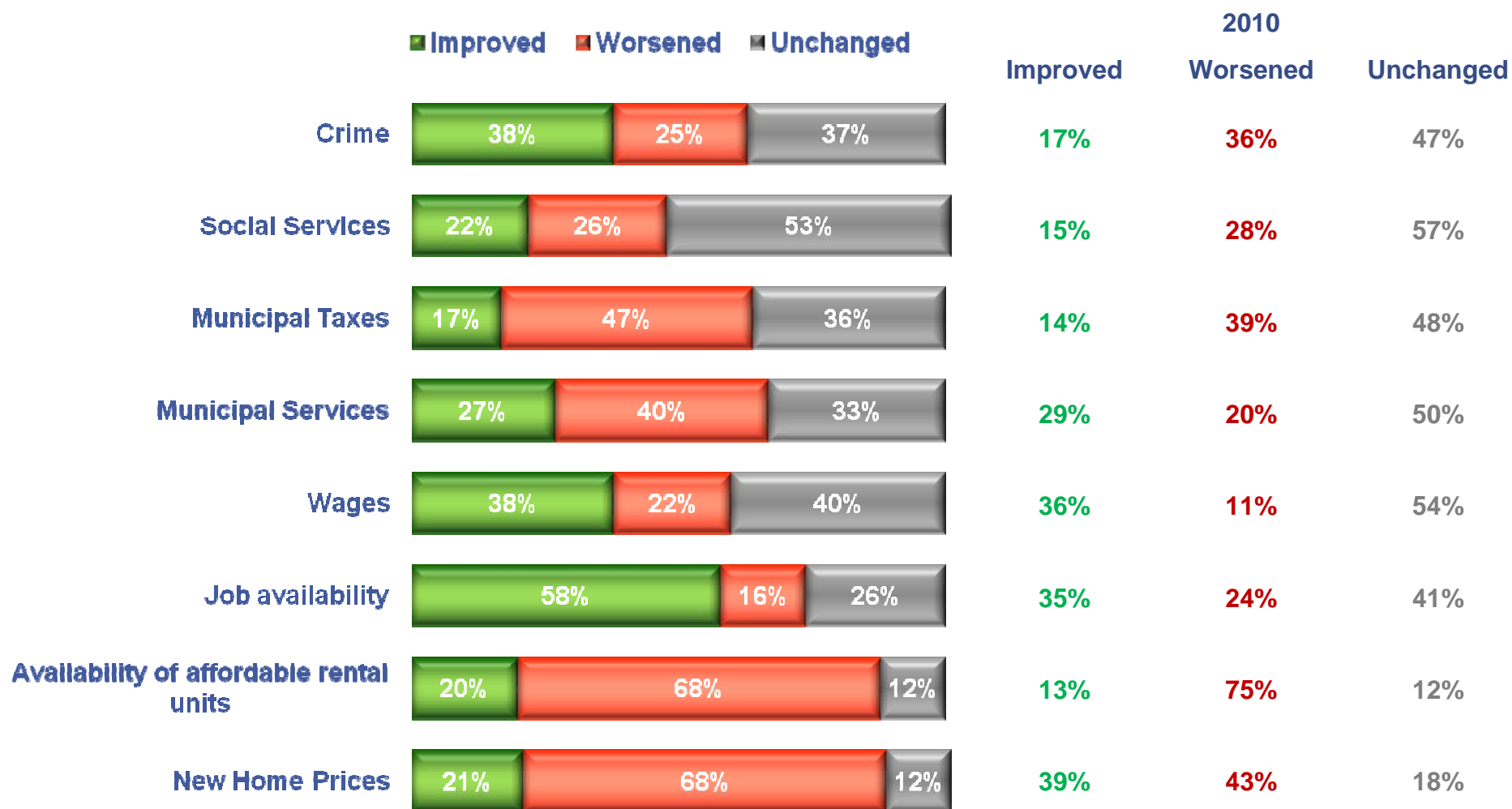


## City Specific Questions – Regina





# Housing and Services in Regina



R2. As the economy continues to be strong in Saskatchewan, it is having an impact on many aspects of the economy, from jobs to housing prices, to government services. From your perspective, have each of the following improved, worsened or been unchanged in the past year in Regina?  
Base: All Regina Respondents (n=402)



# Regina Agreement Statements

■ Strongly agree ■ Somewhat agree ■ Somewhat disagree ■ Strongly disagree





## Rating the Performance of the Provincial Government's Response to Spring Flooding

Very good



15%

Good



58%

Poor



17%

Very poor

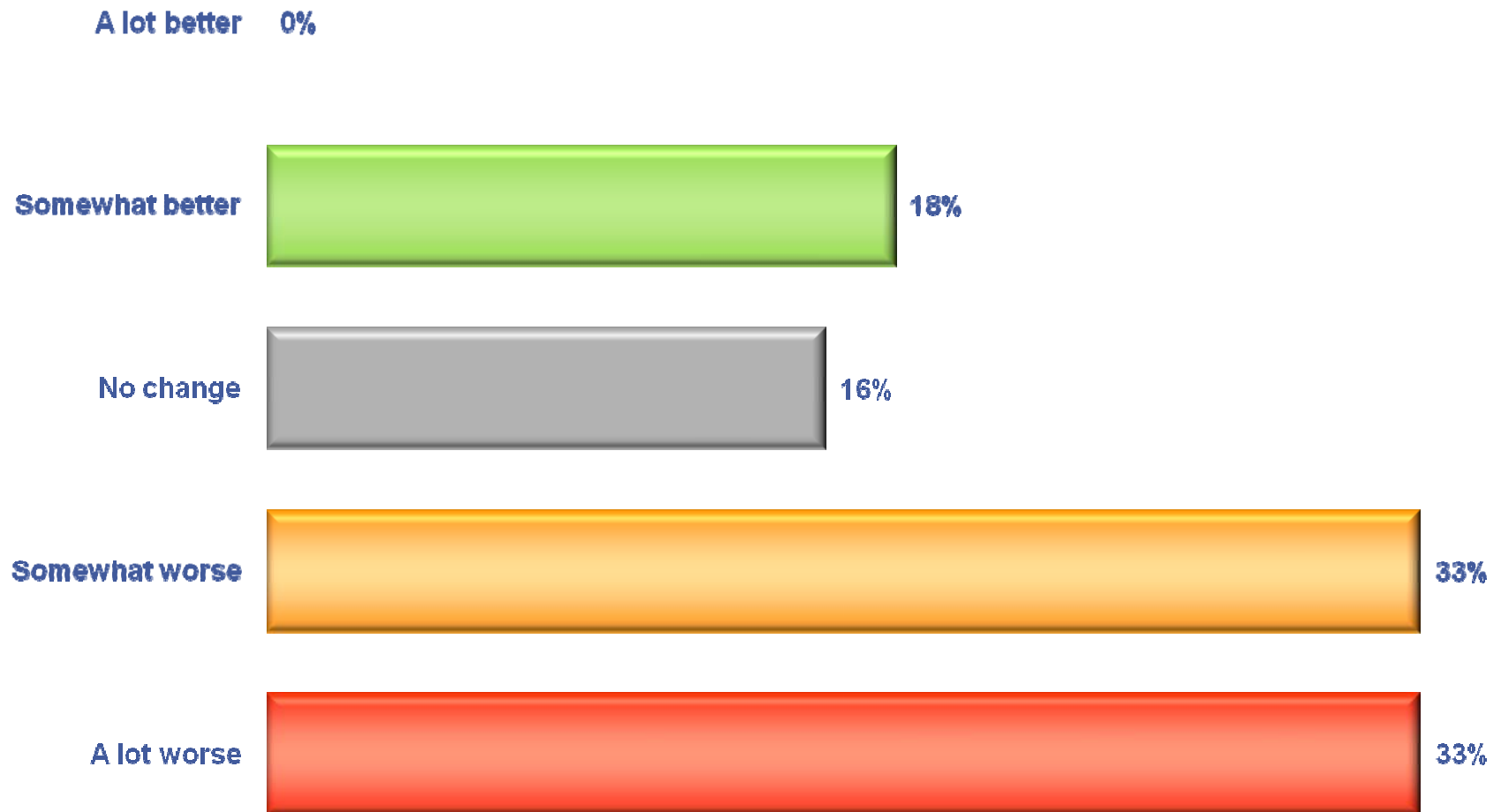


10%

R4. As you may know, spring flooding in Saskatchewan was especially widespread this year. How would you rate the performance of the provincial government's response to this year's spring flooding  
Base: All Regina Respondents (n=402)

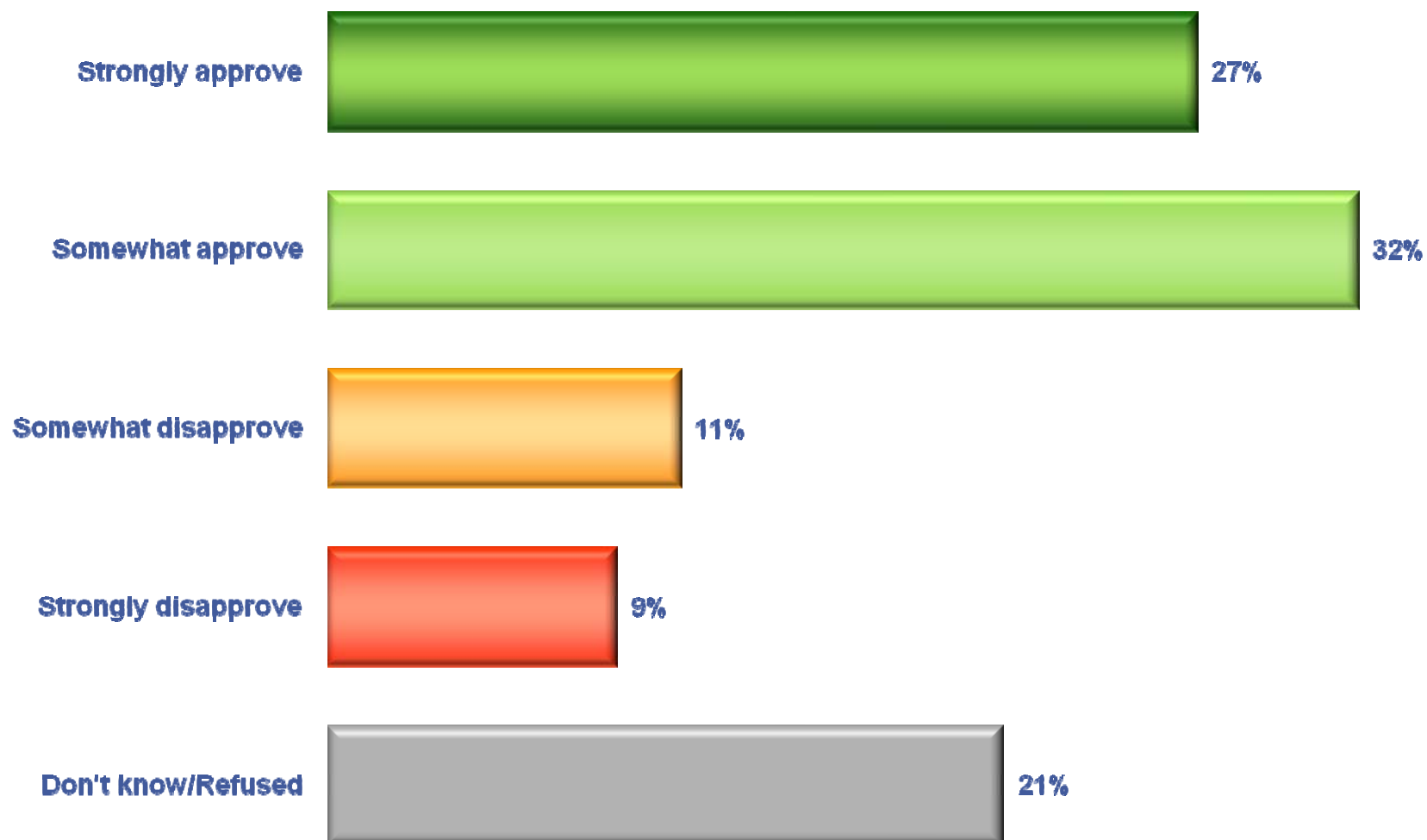


## Traffic in the City Compared to Five Years Ago





## Feelings Towards the Proposed Takeover of PotashCorp by a Foreign Company



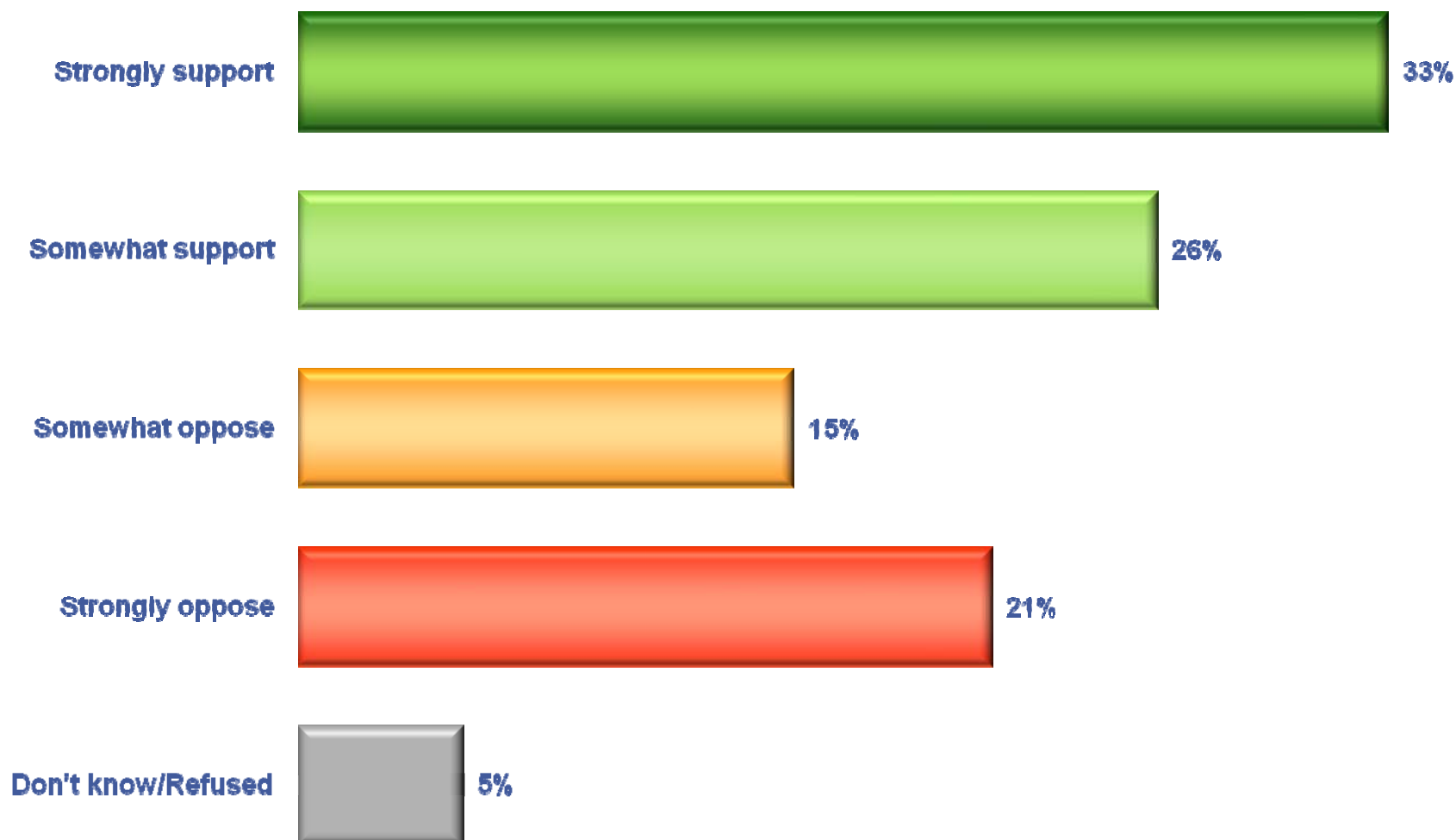
R6. Do you approve or disapprove of the way in which the provincial and federal governments handled the proposed takeover of PotashCorp by a foreign company?

Base: All Regina Respondents (n=402)



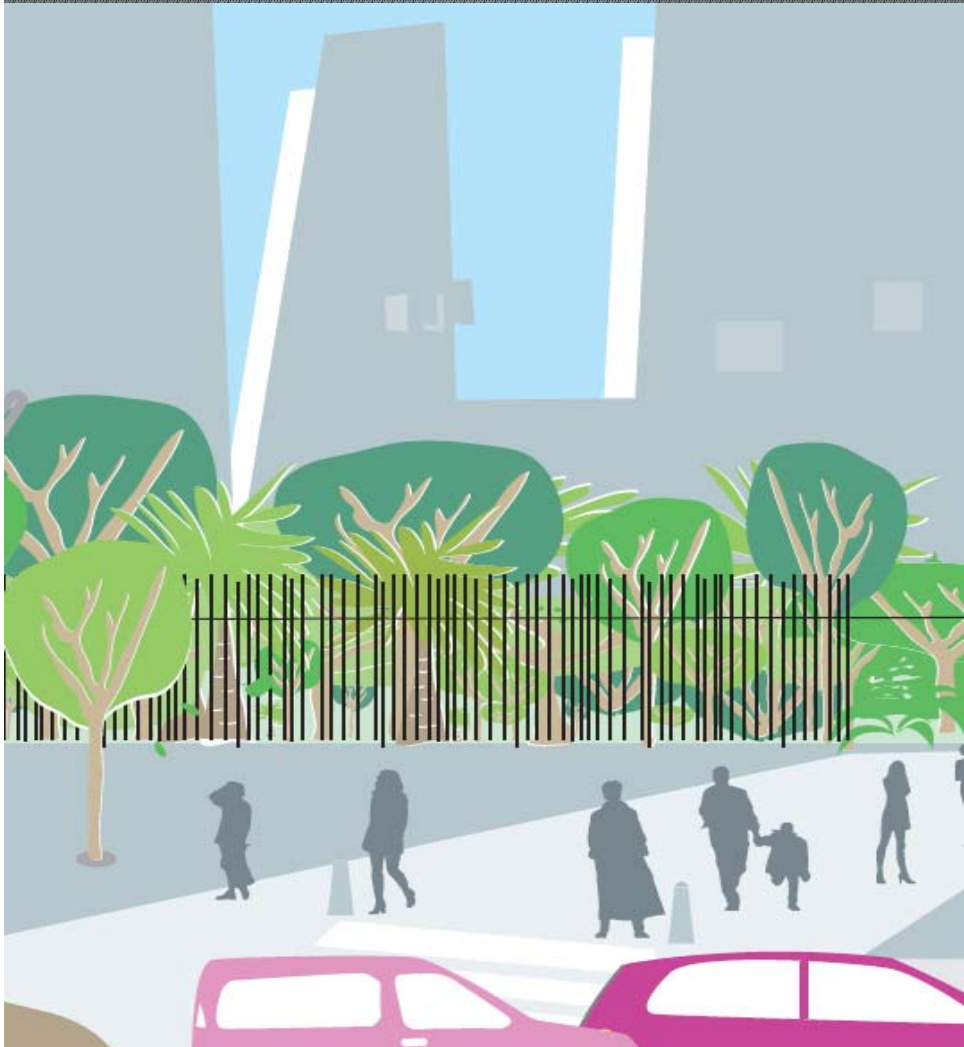


## Plans to Build a New Stadium in Regina and Convert the old Mosaic Stadium Into a Neighborhood





Thank You!





Ipsos Reid



# Global TV Canada's Pulse 2011

Regina



Nobody's Unpredictable